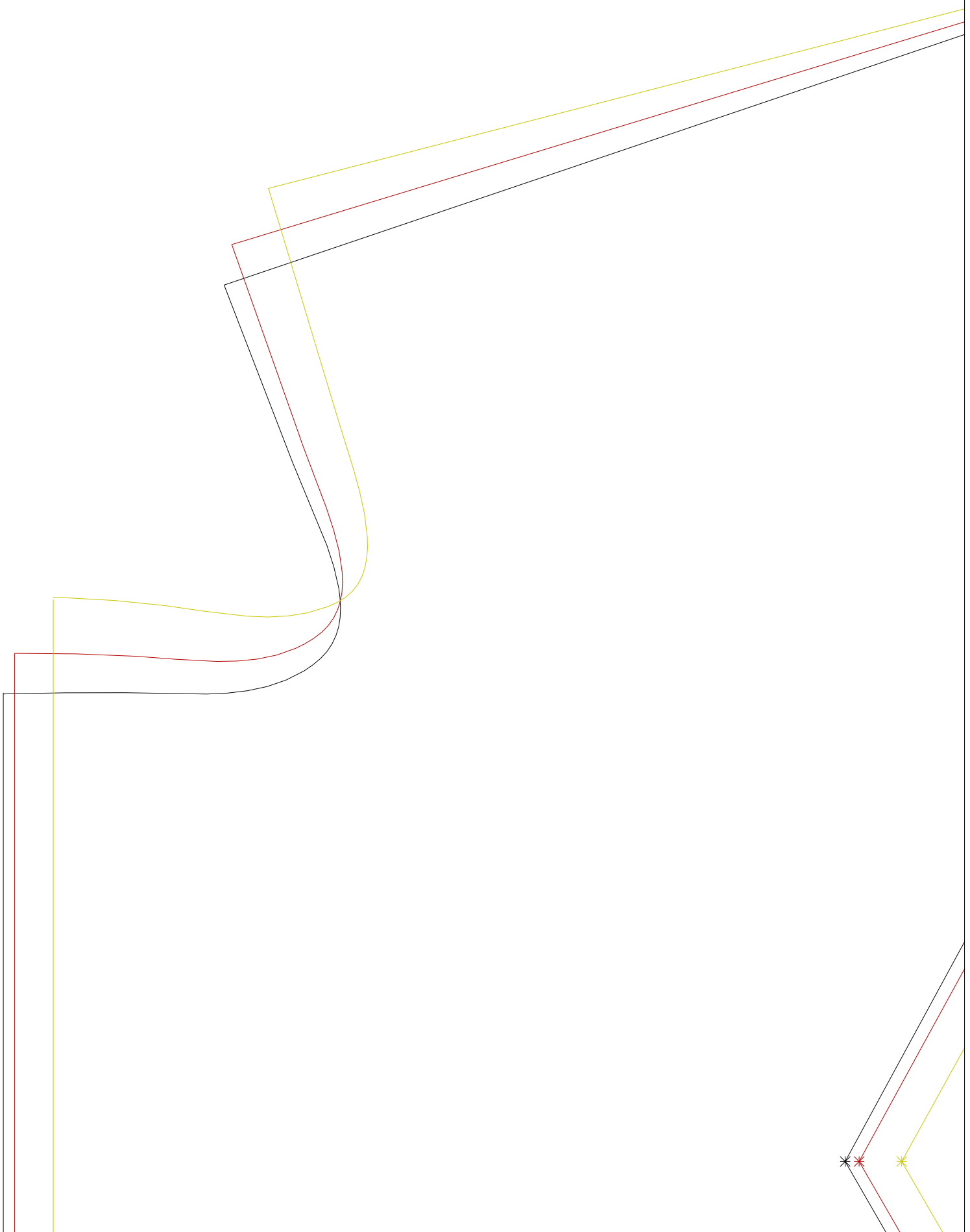


(A, 01): Bluse-midori.mdl (..\Angebot\)

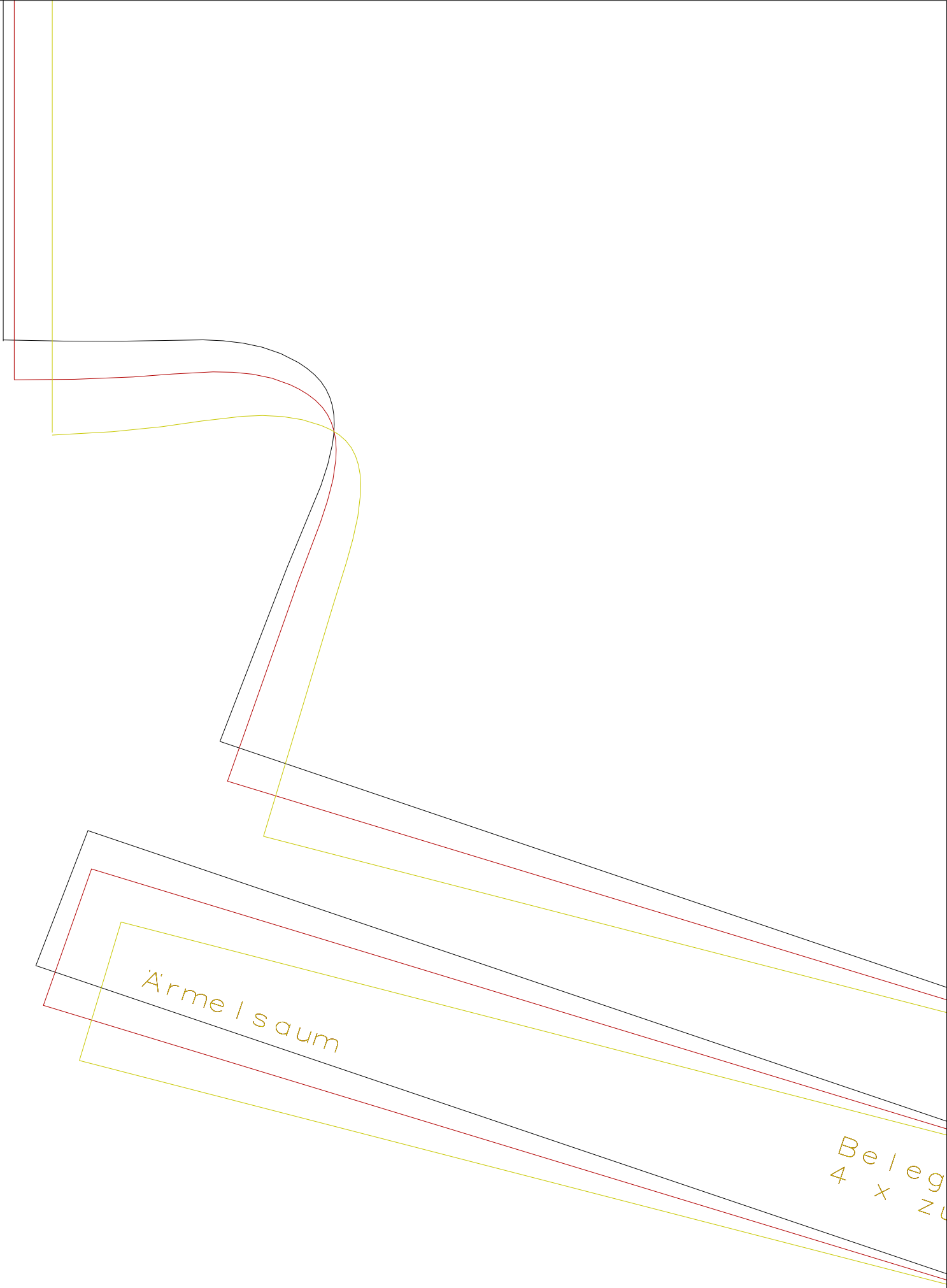


Faden I

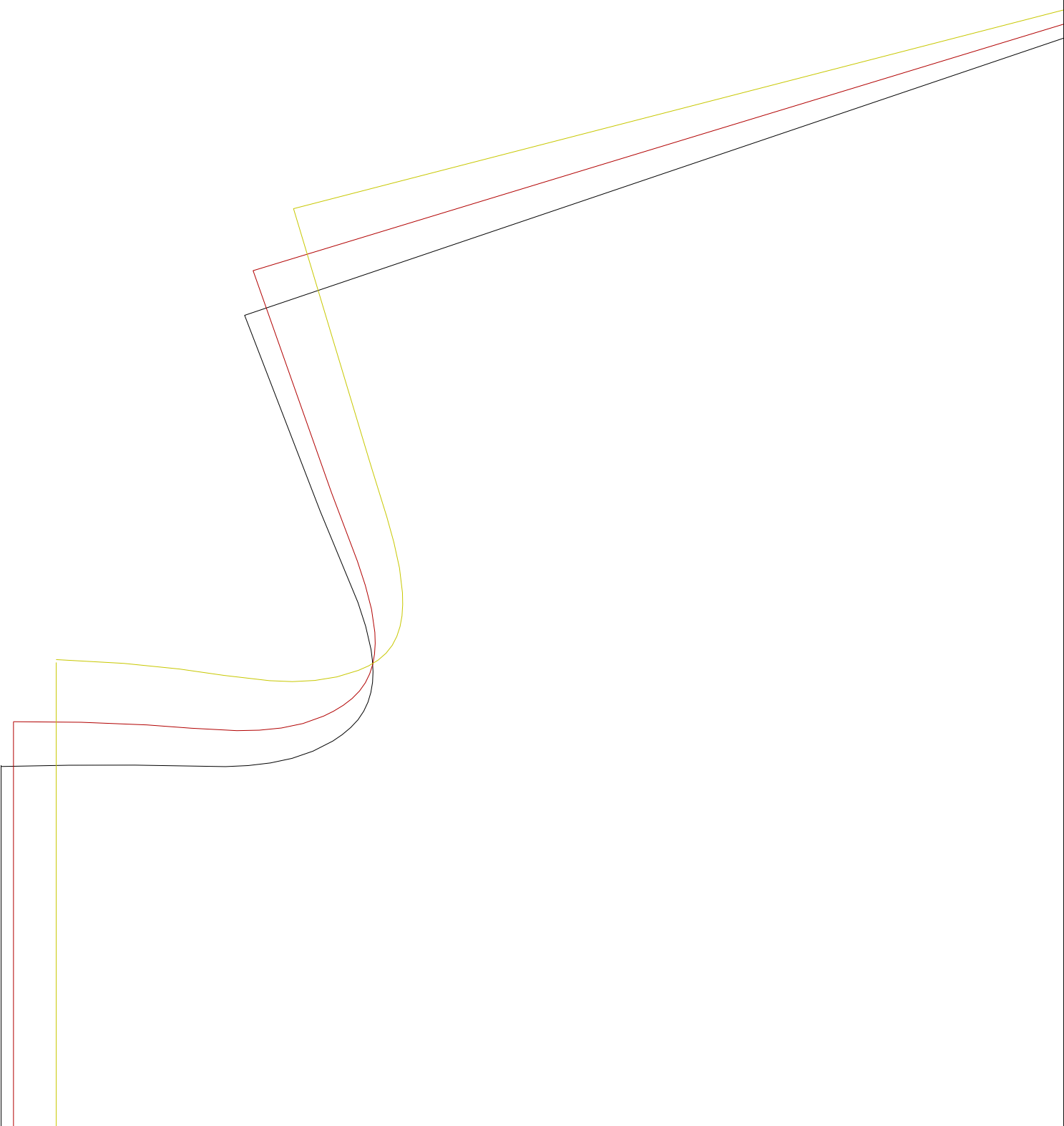
Bluse in Flechtoptik

vorder teil
1 x zuschneiden

(A, 03) : Bluse-midori.mdl (.. \Angebot \)



(A, 04) : Bluse-midori.mdl (..\Angebot\)



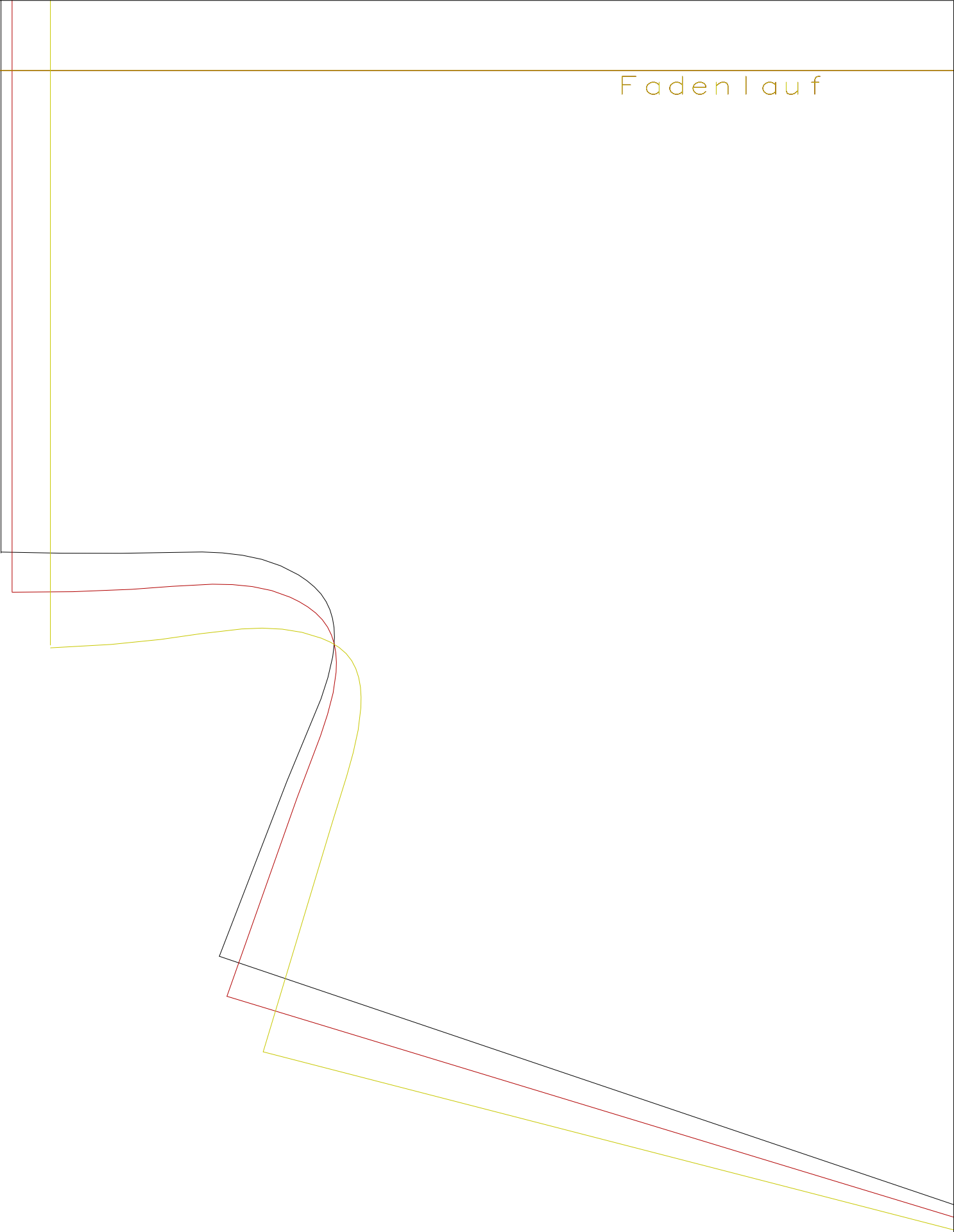
Bluse in Flechtoptik

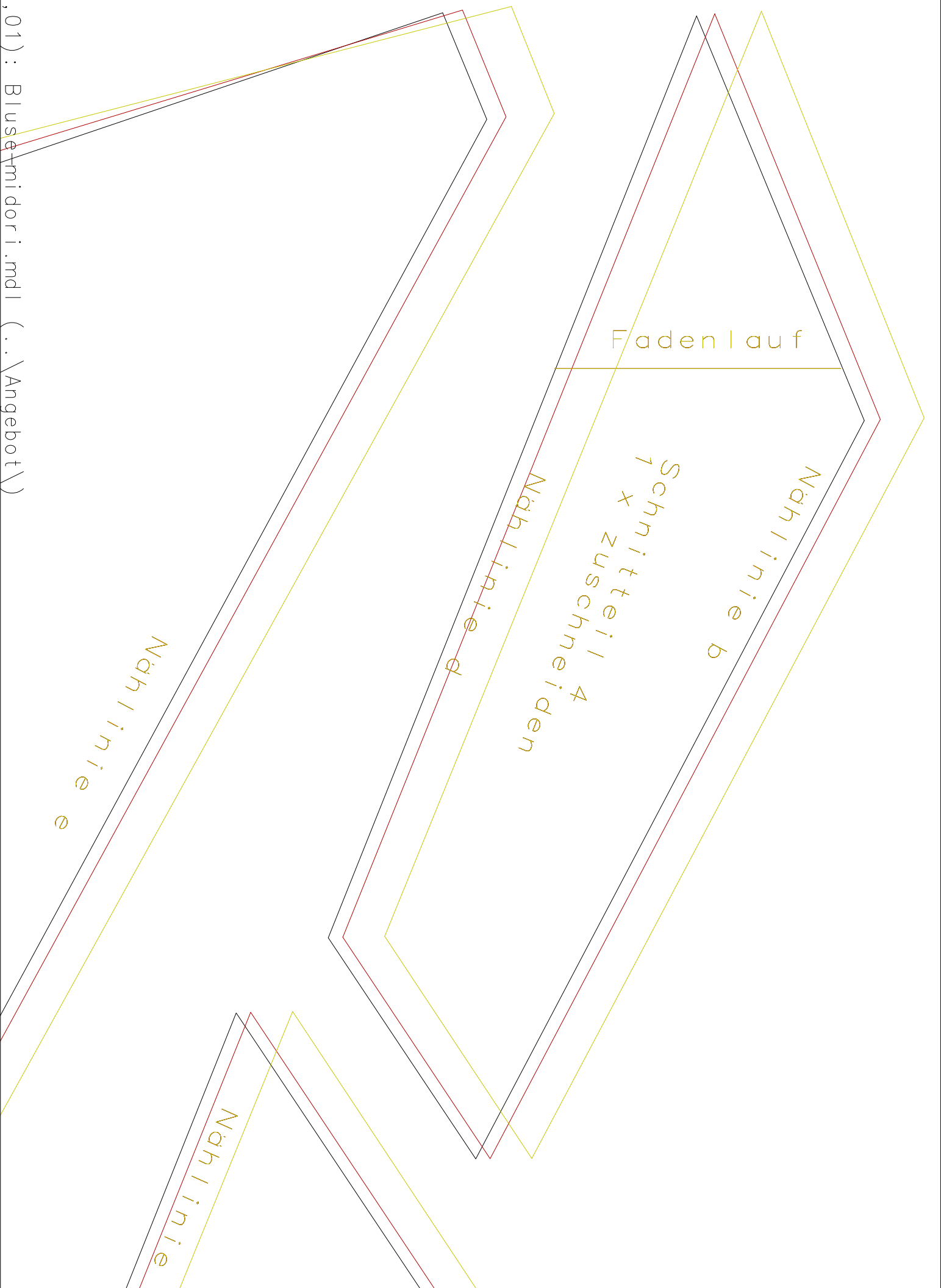
Rückenteil

1 x zuschneiden

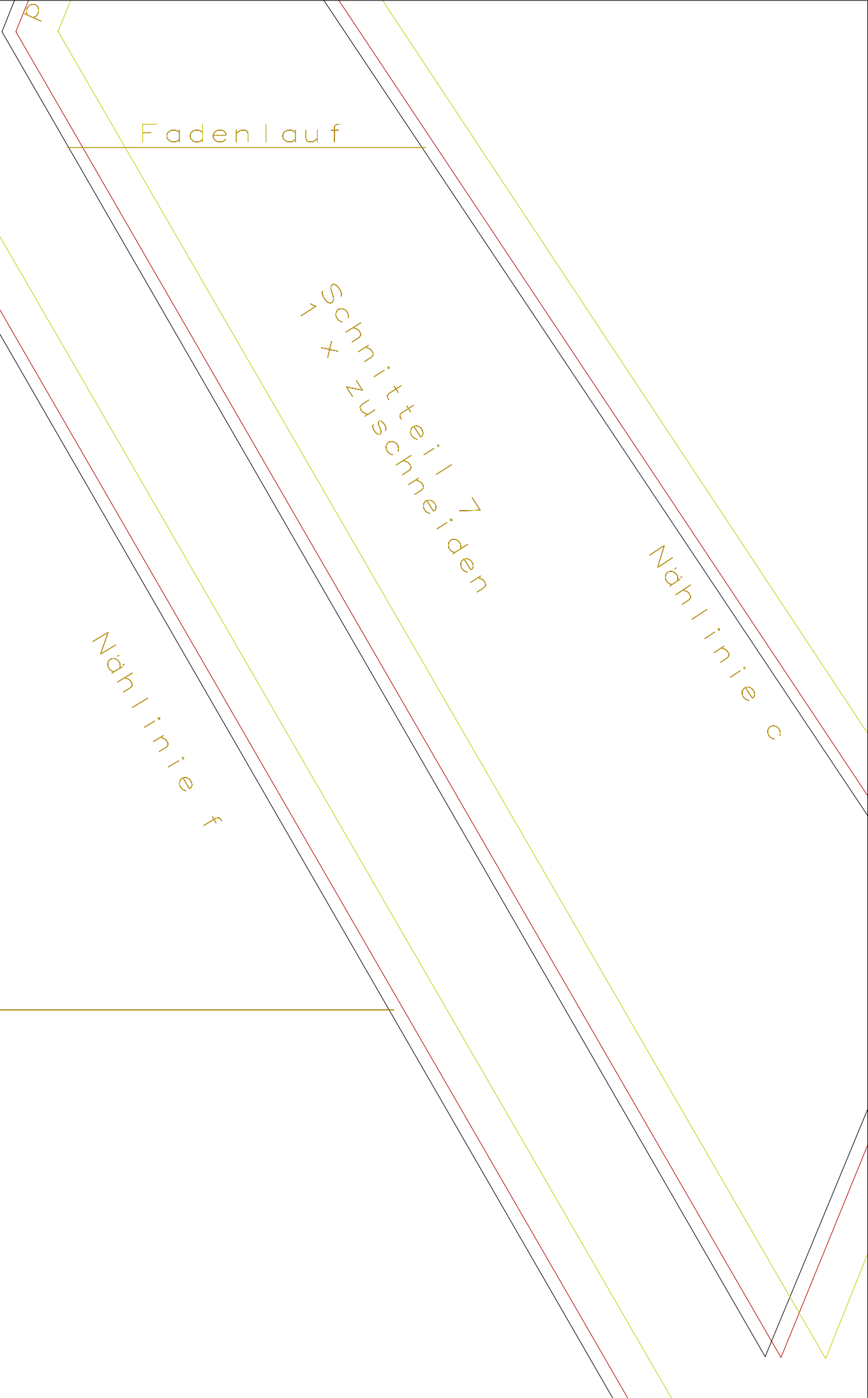
Fadenlauf

(A,06) : Bluse-midori.mdl (..\Angebot\)





(B,02) : Bluse-midori.mdl (.. \Angebot \)



Fadenlauf

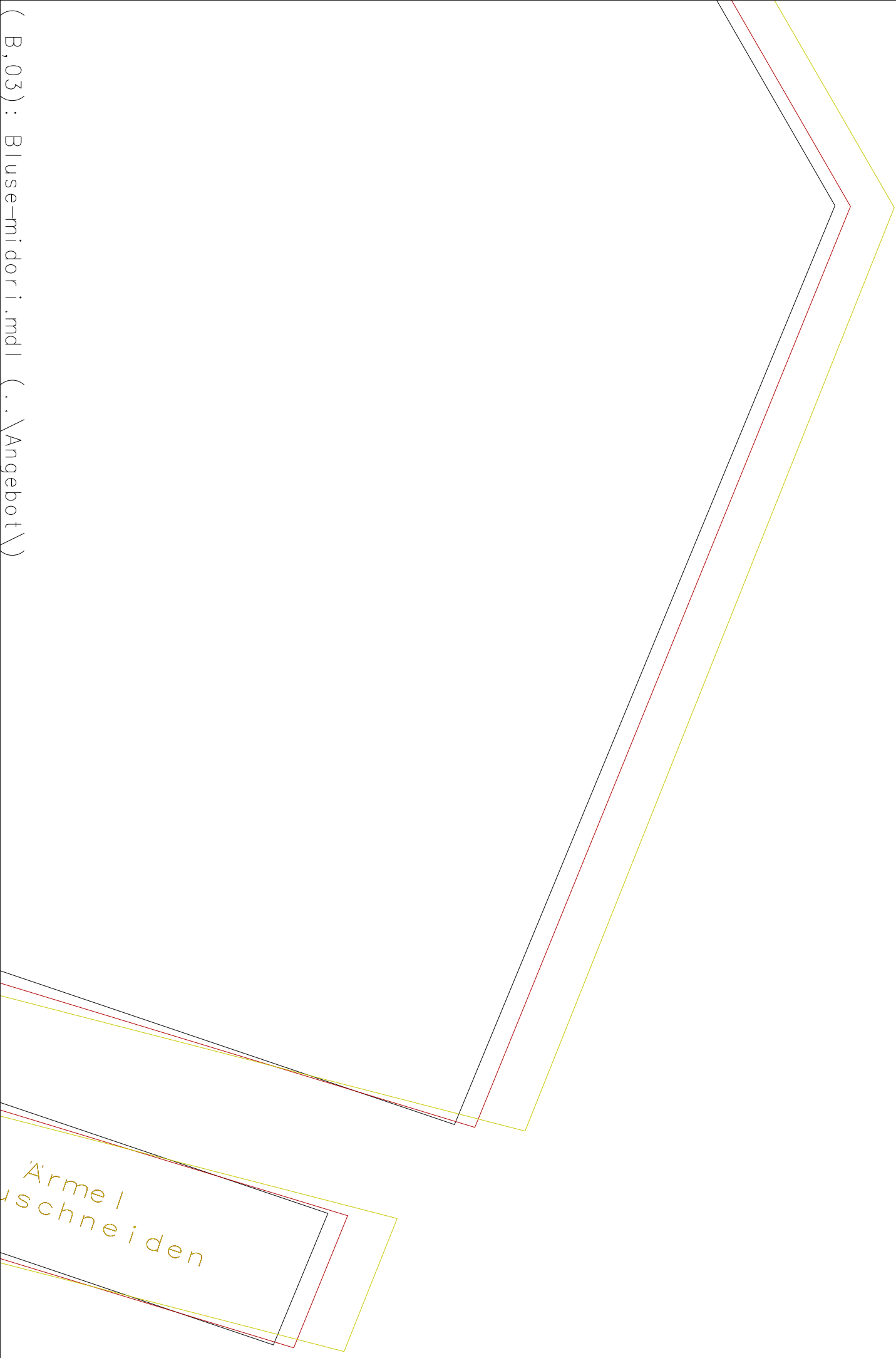
Schnittteil 7
+ zuschneiden

Nählinie c

Nählinie f

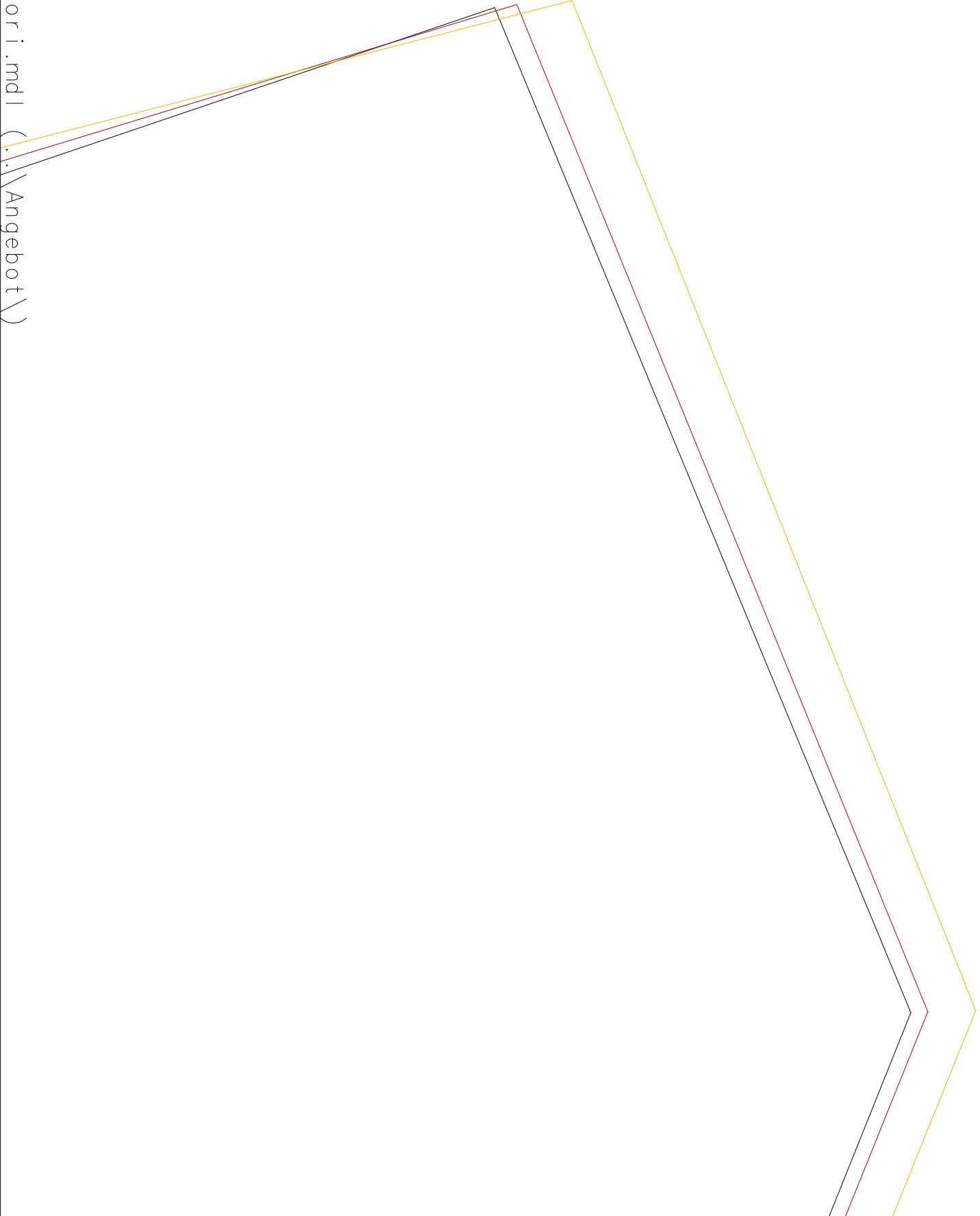
auf

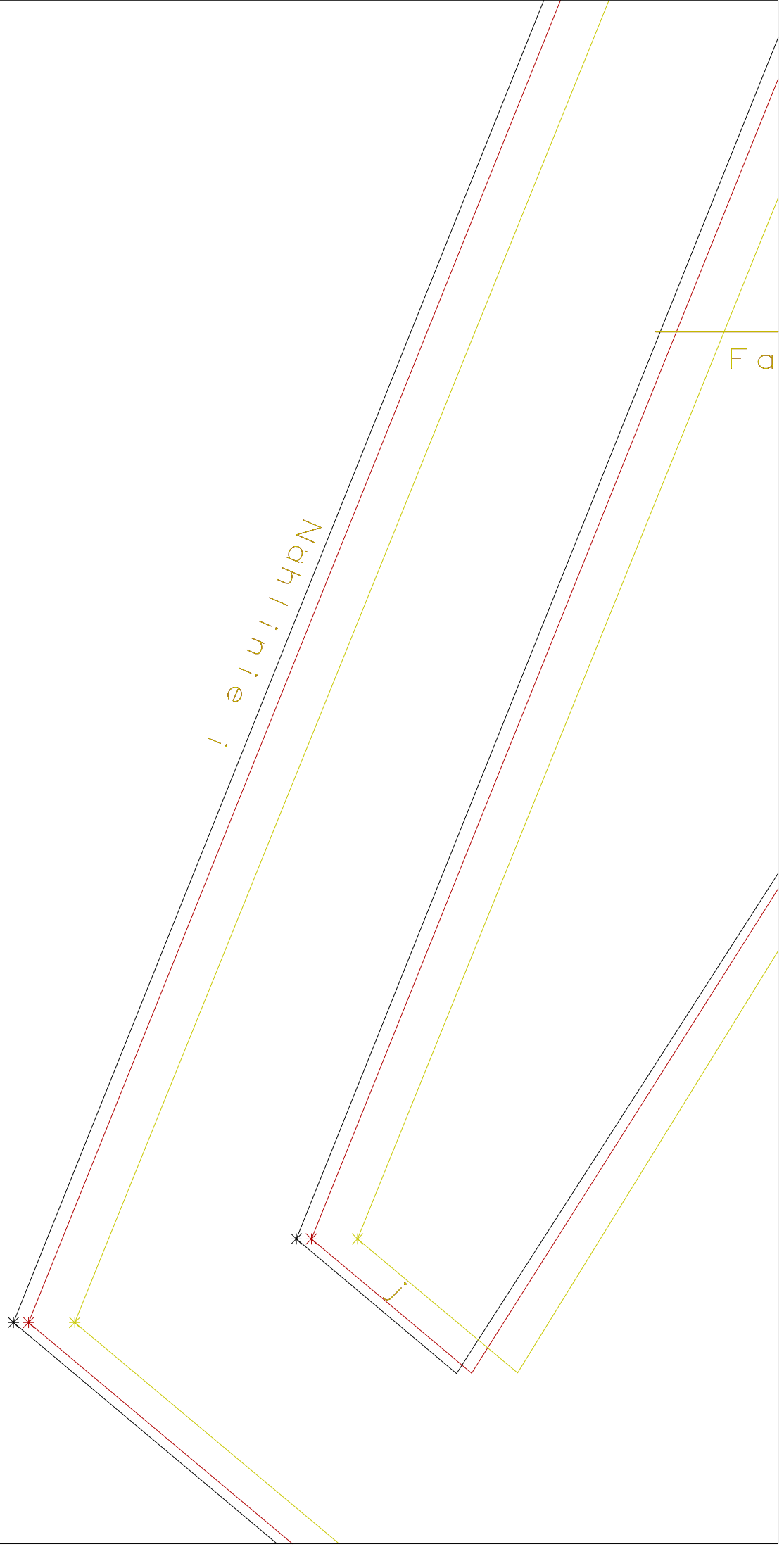
(B, 03) : Bluse-midori.mdl (.. \Angebot \)



Ärmel
uschneiden

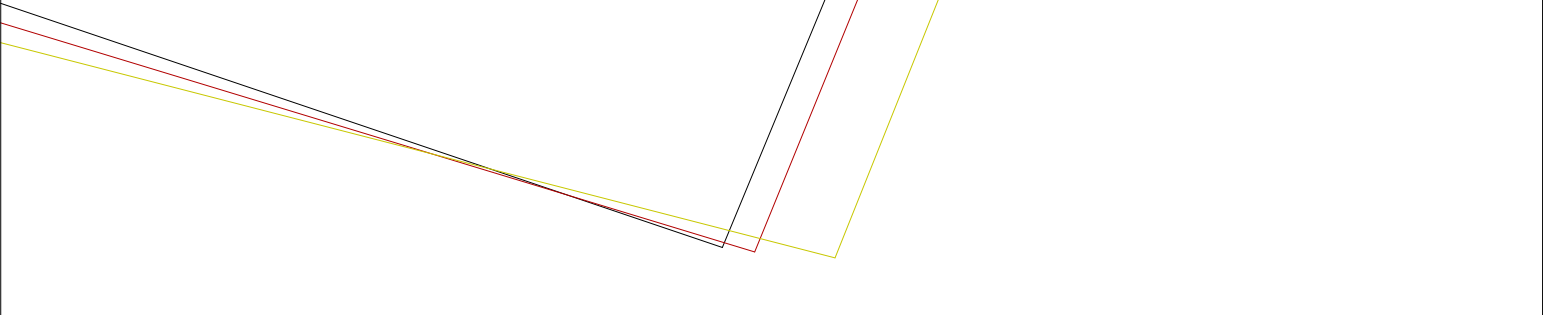
(B, 04) : Bluse-midori.mdl (..\Angebot\)

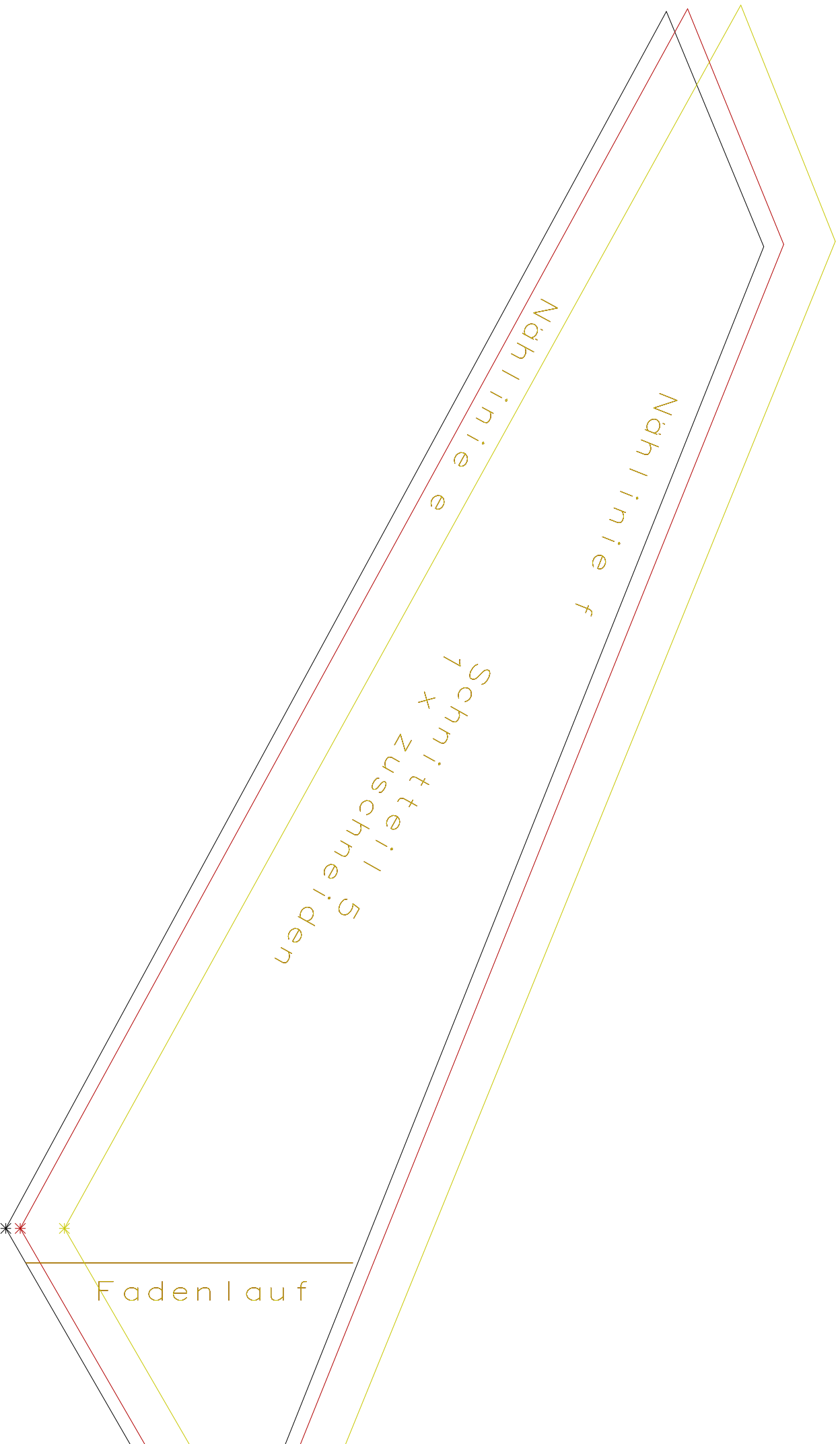


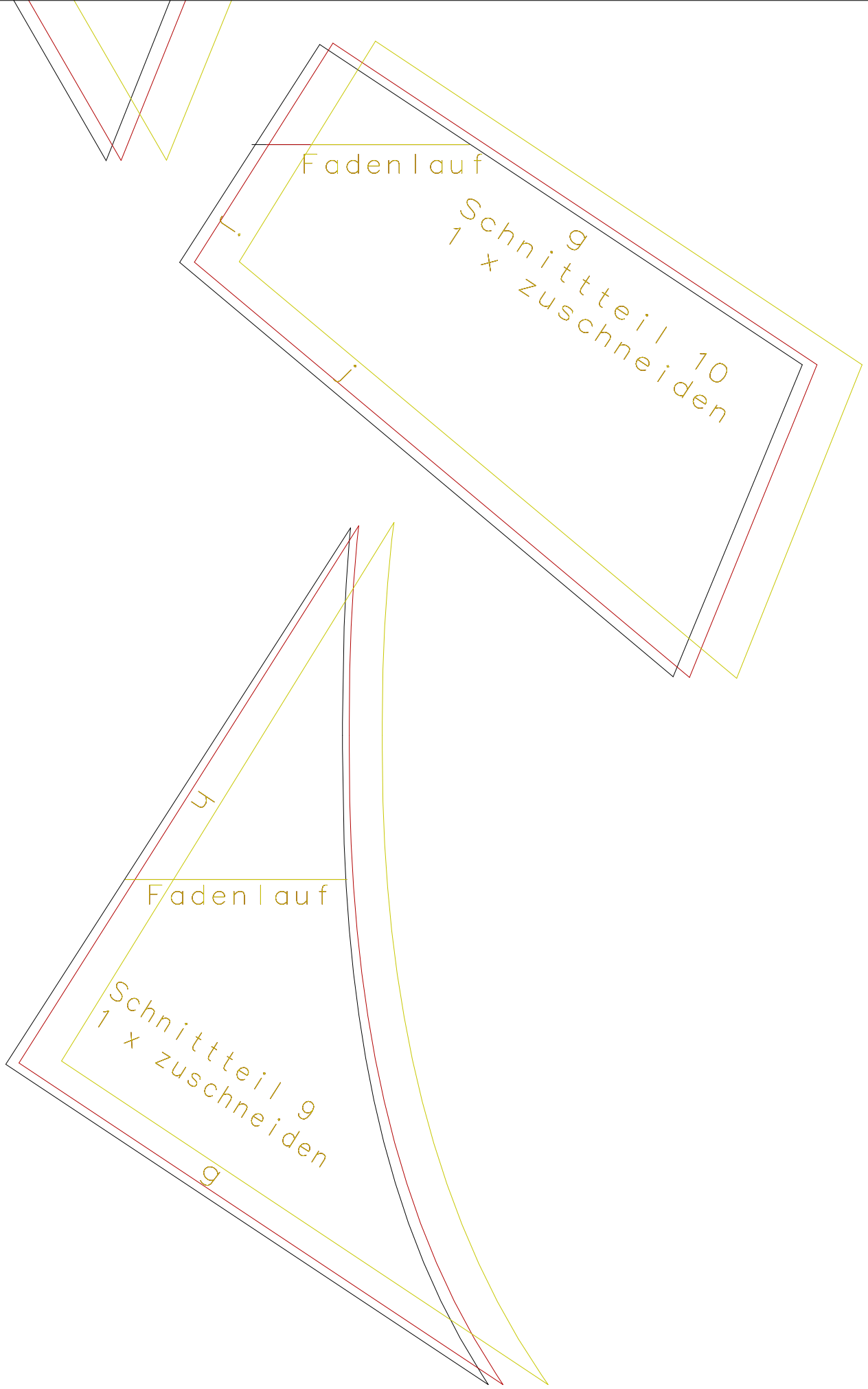



Nählinie j

(B, 06) : Bluse-midori.mdl (.. \Angebot \)

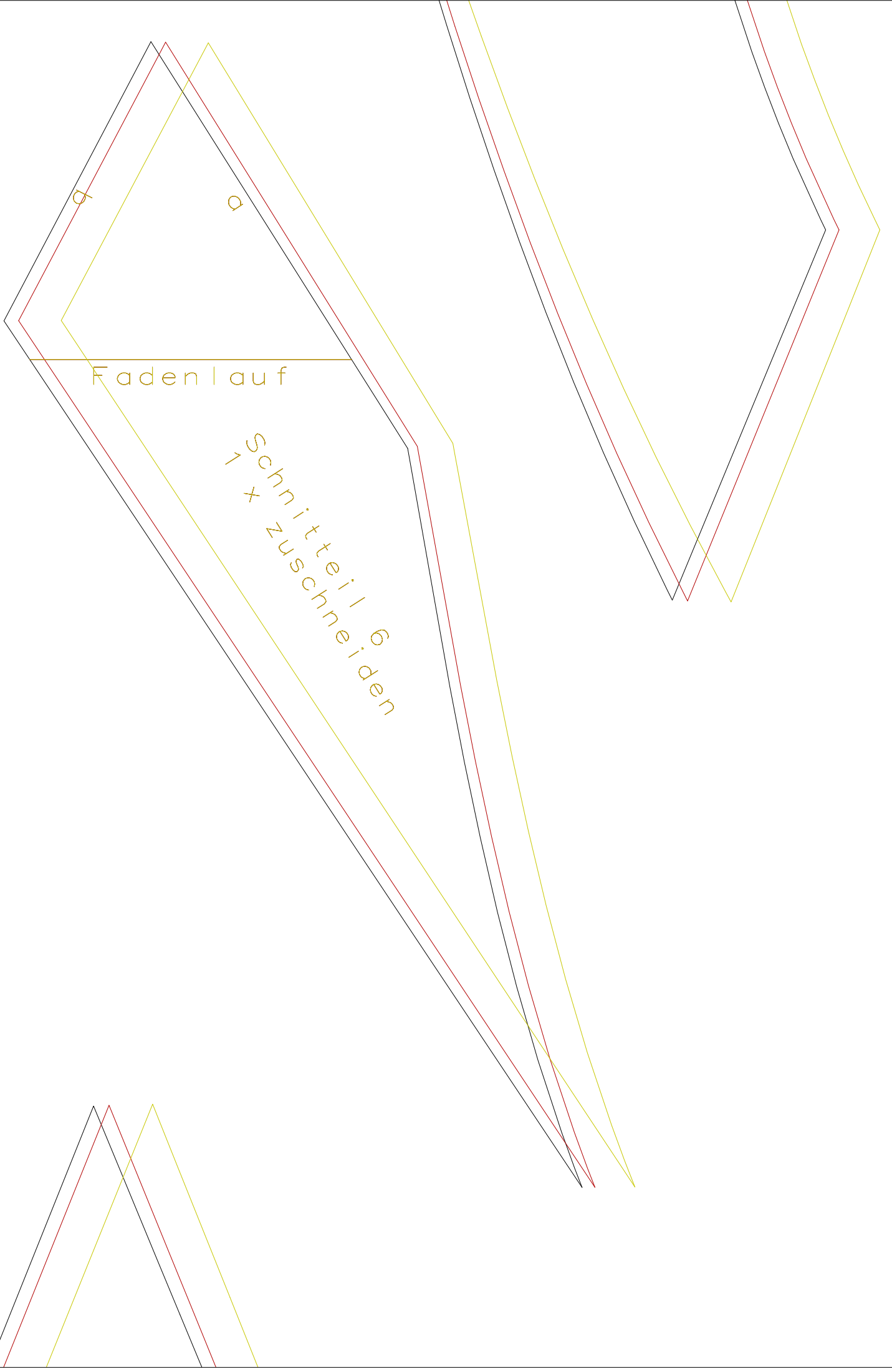




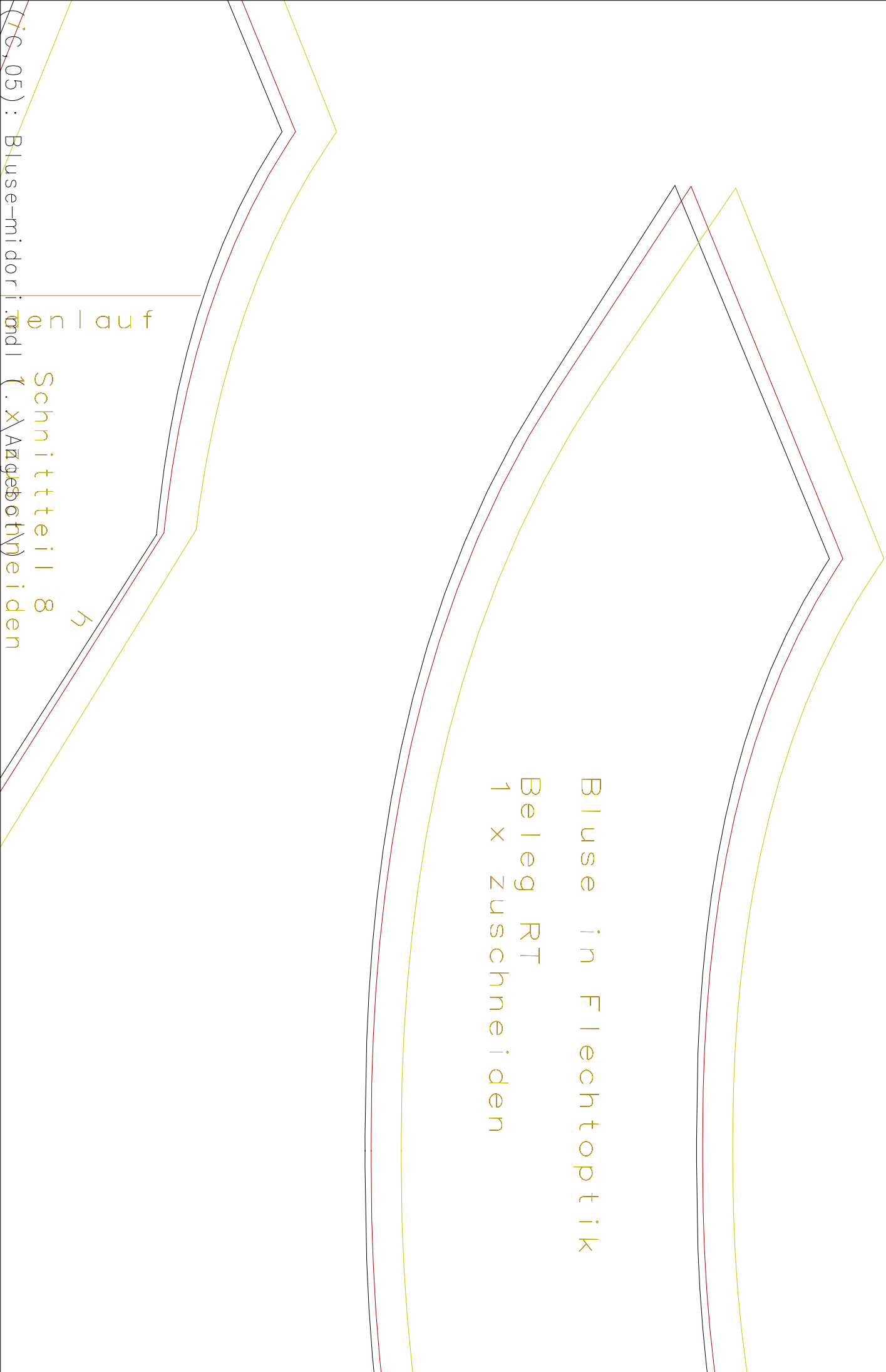




Bluse in Flechtoptik
Beleg VT
1 x zuschneiden



Bluse in Flechtoptik
Beleg RT
1 x zuschneiden



enlauf
Schnittteil 8
1 x zuschneiden

(ic, 05) : Bluse-midori

