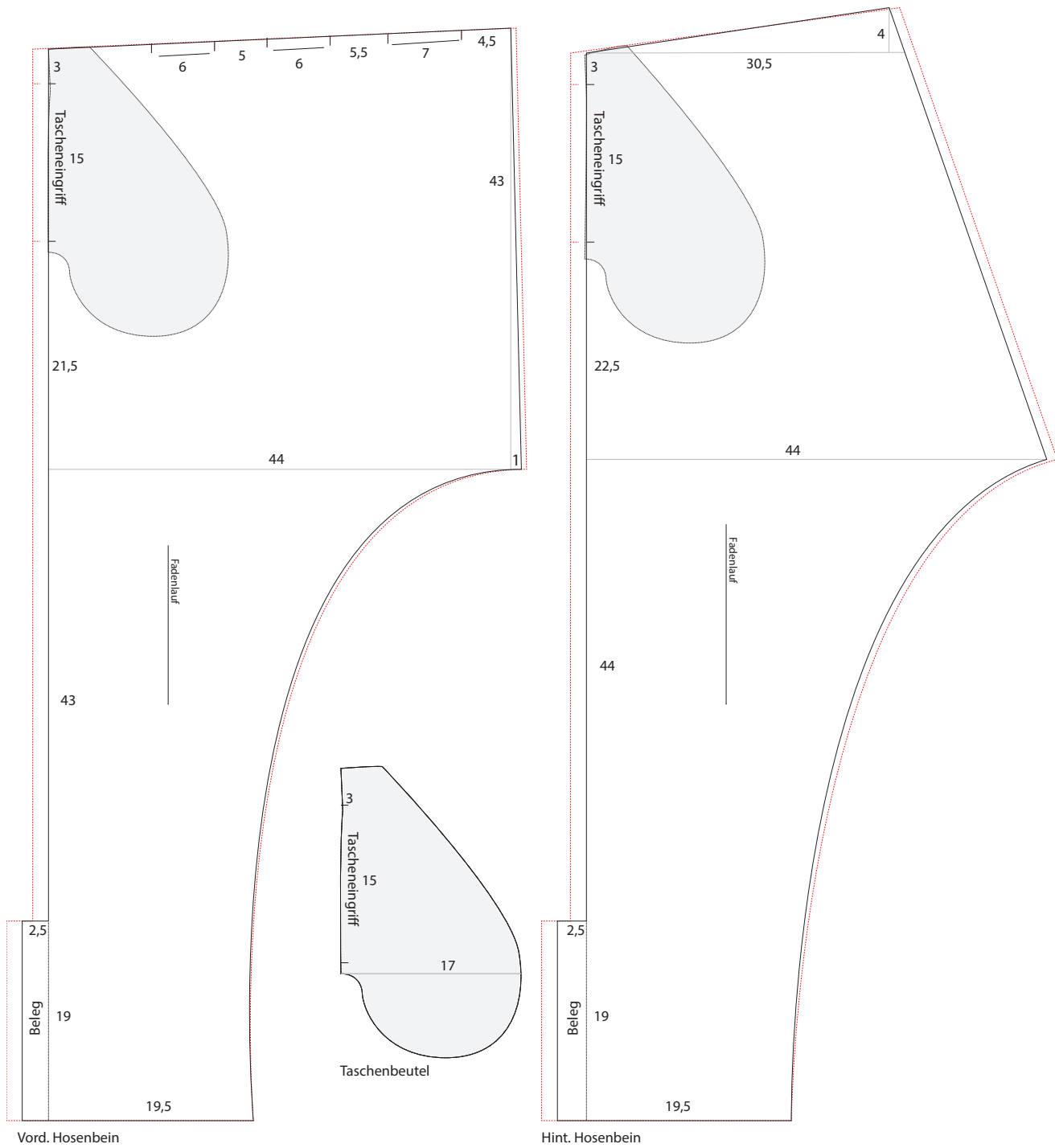


Harems-Hose

Kollektion N°11

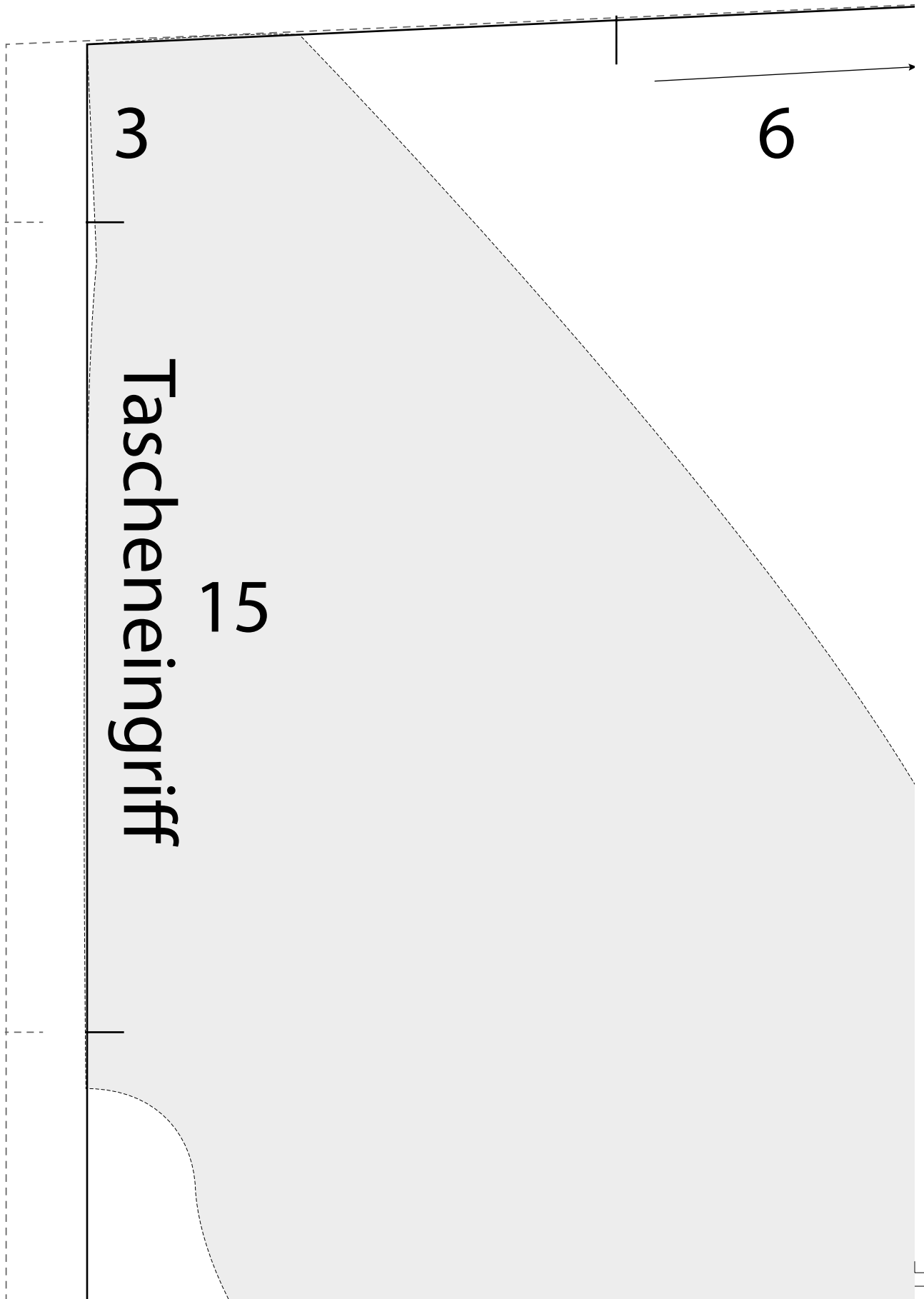
36/38 und 40/42

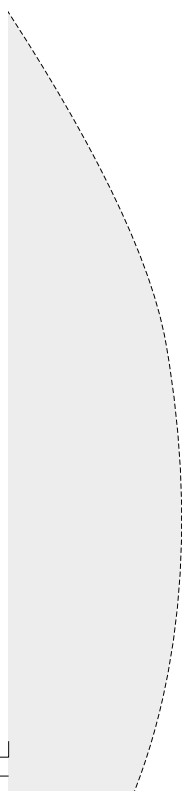
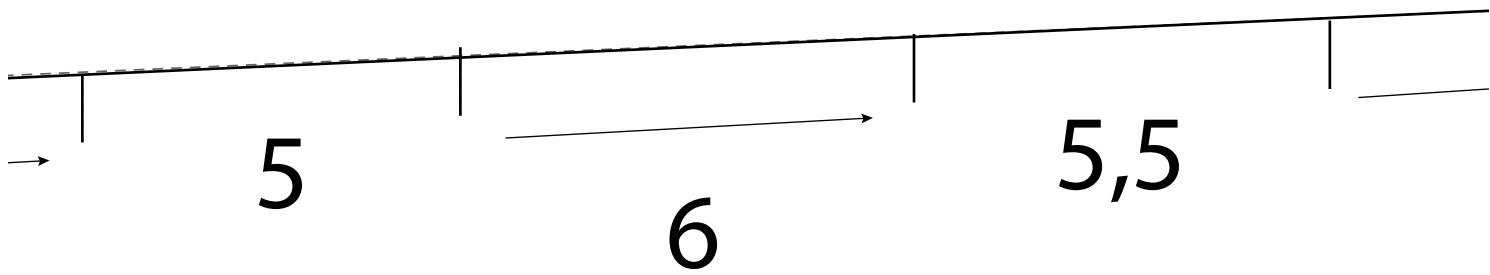
Die Angaben für Größe 40/42 stehen in Klammern. Steht nur eine Angabe, so gilt diese für beide Größen.

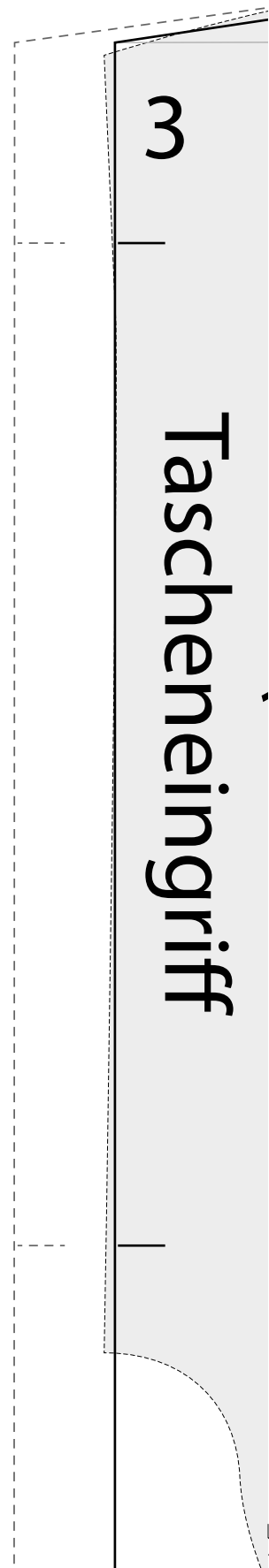
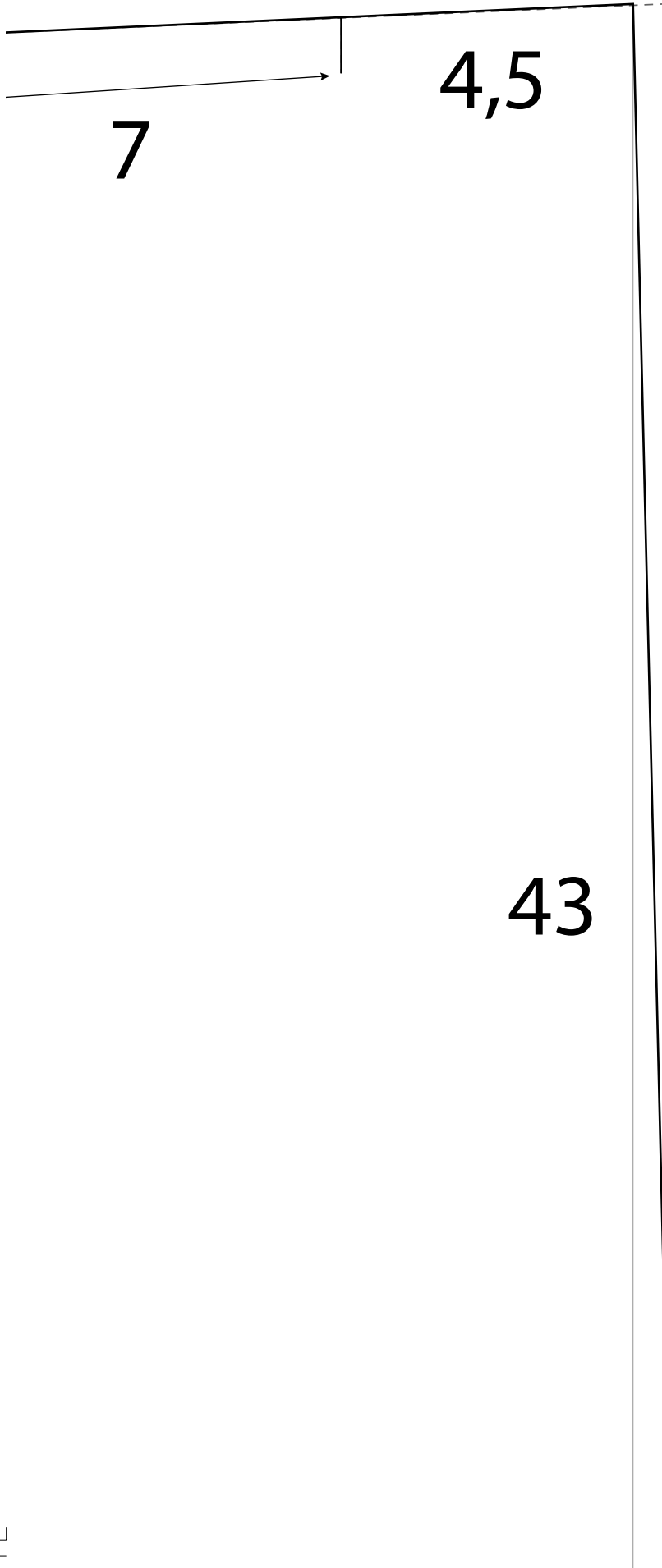


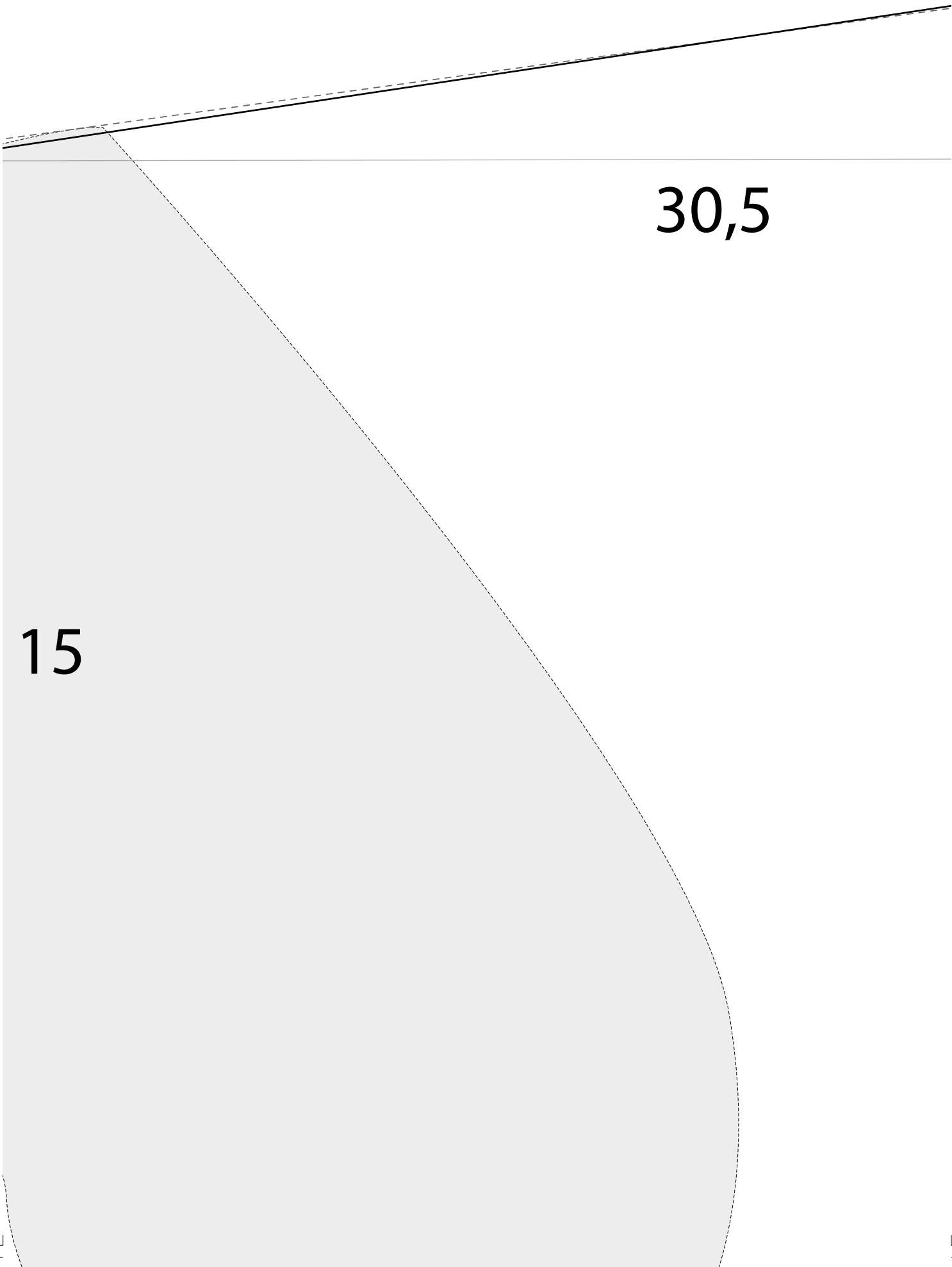


1cm



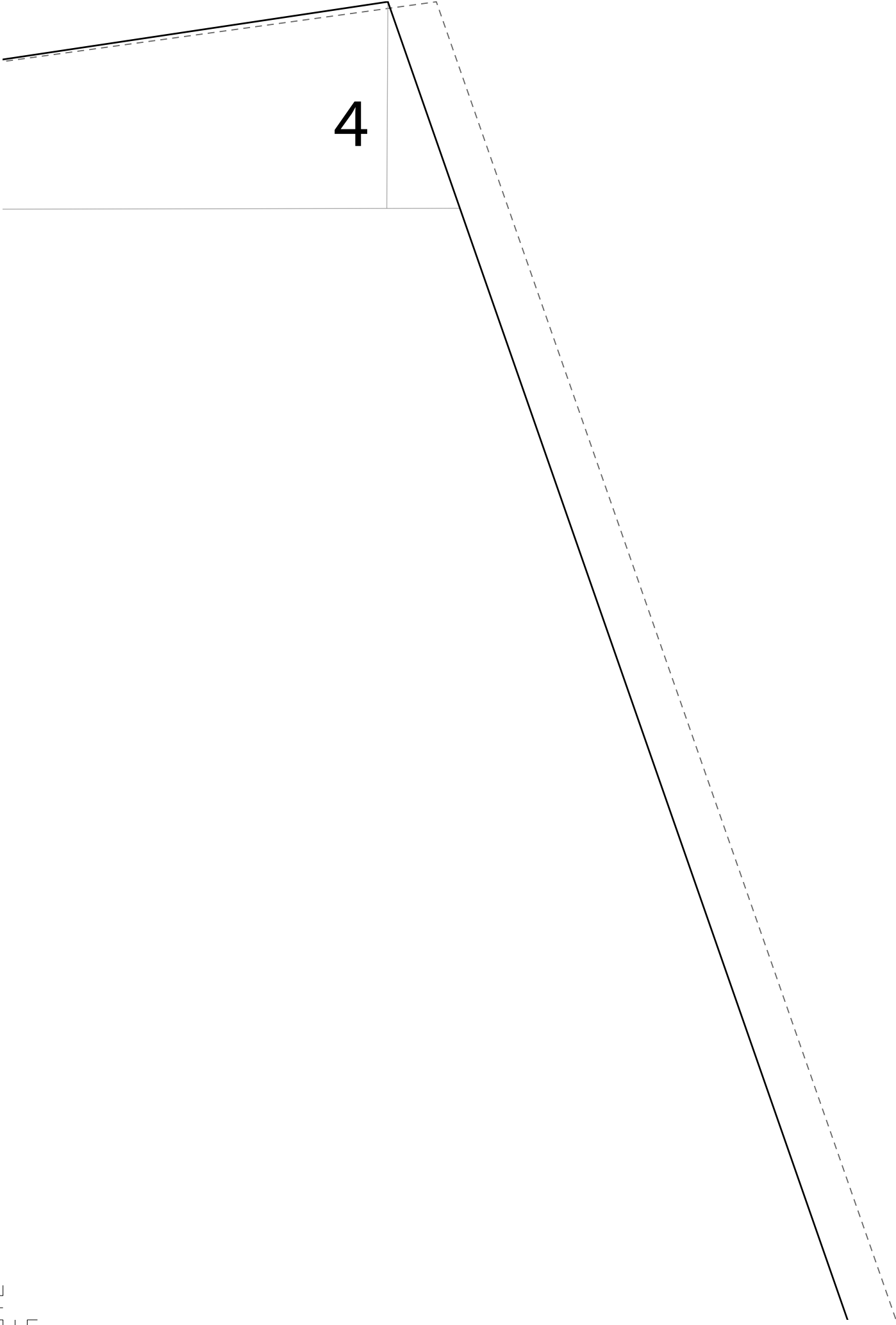






15

30,5

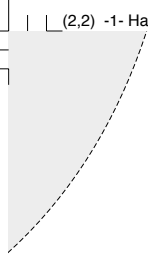




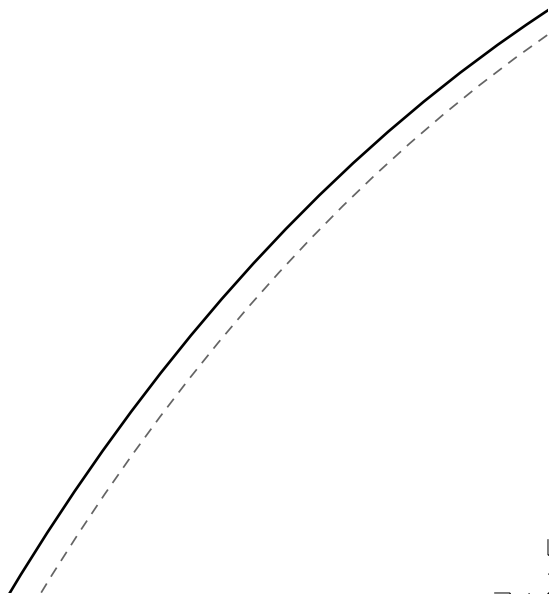


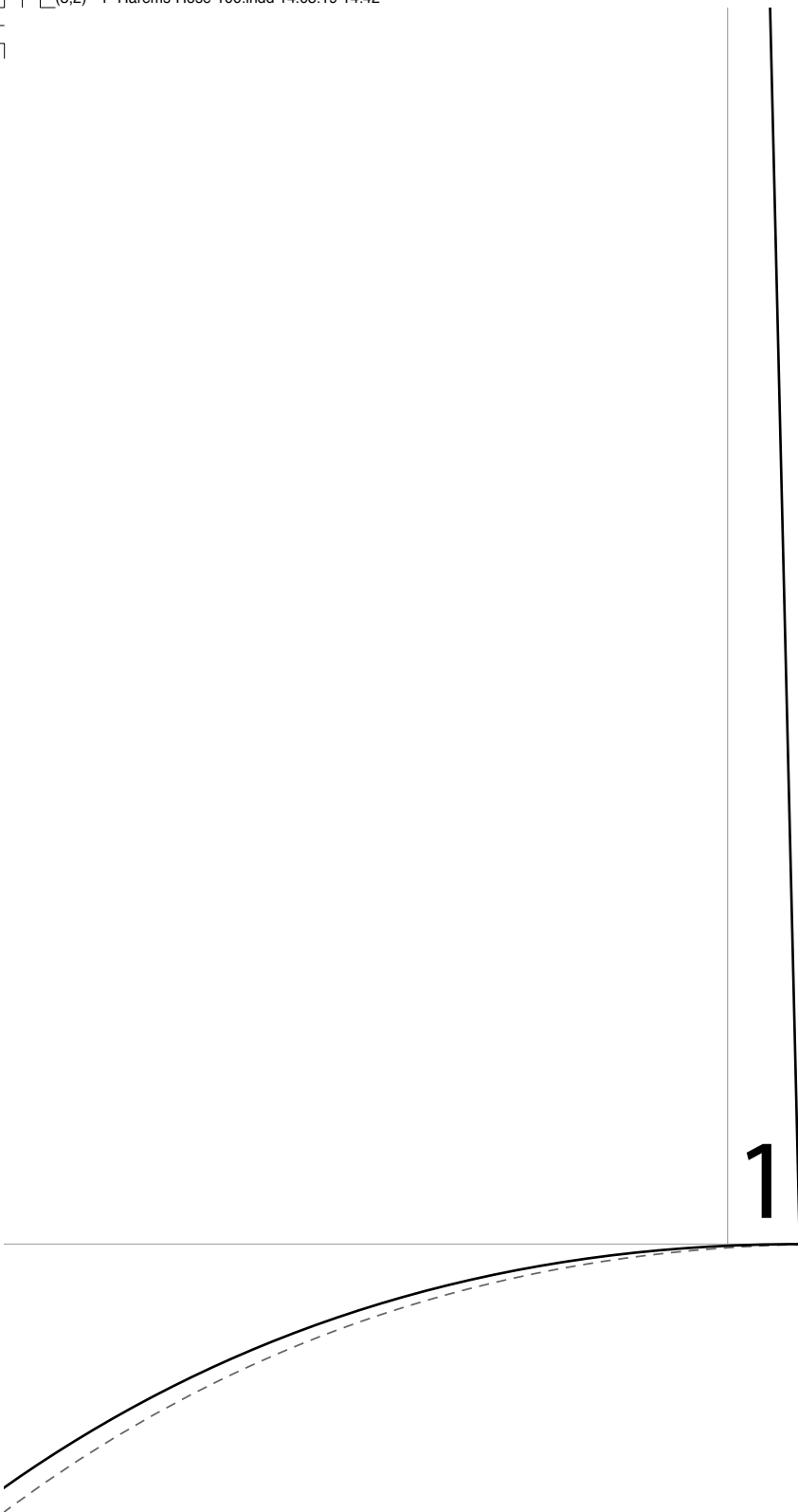
21,5

Fader



44





22,



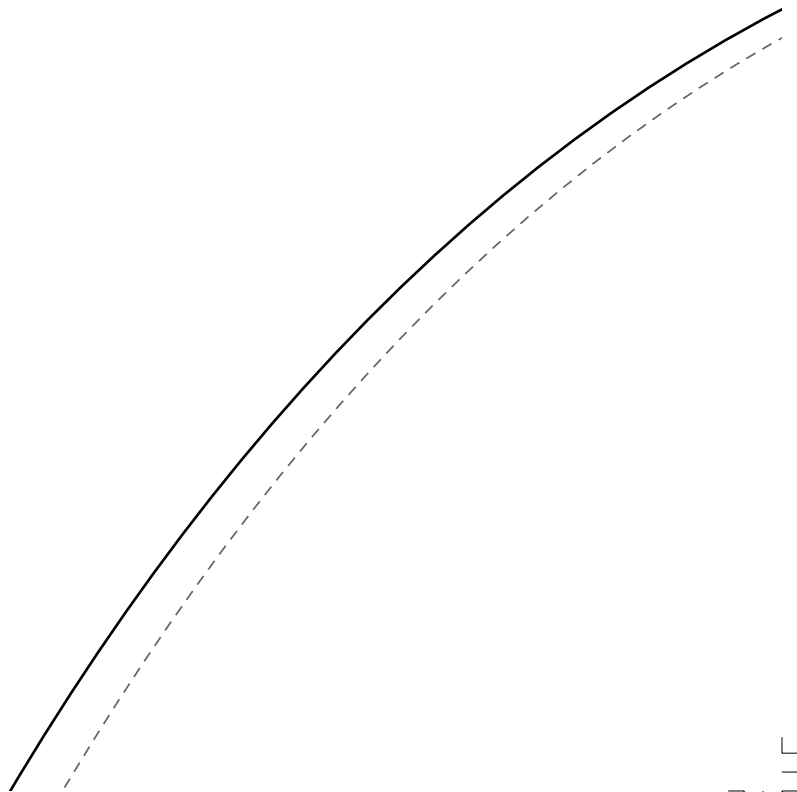
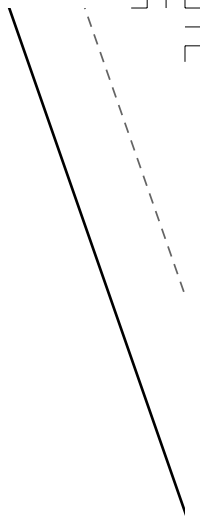


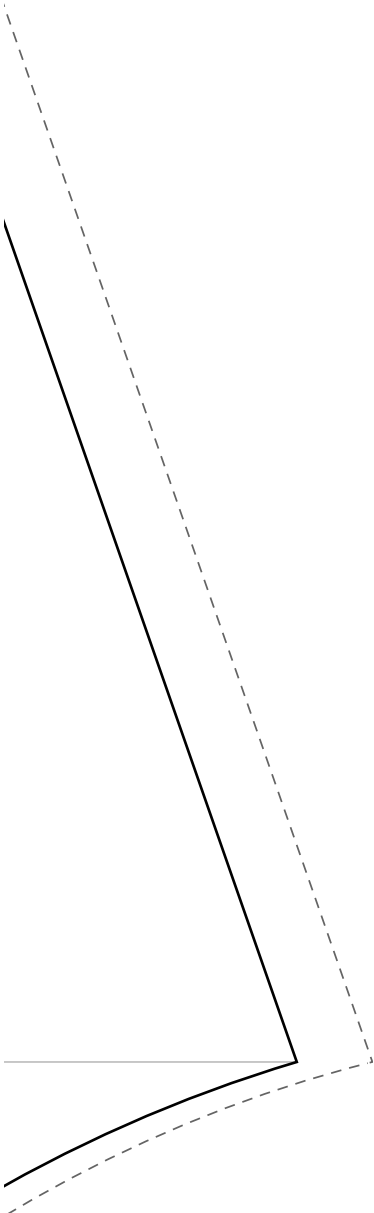
2,5

44

Fadenlauf



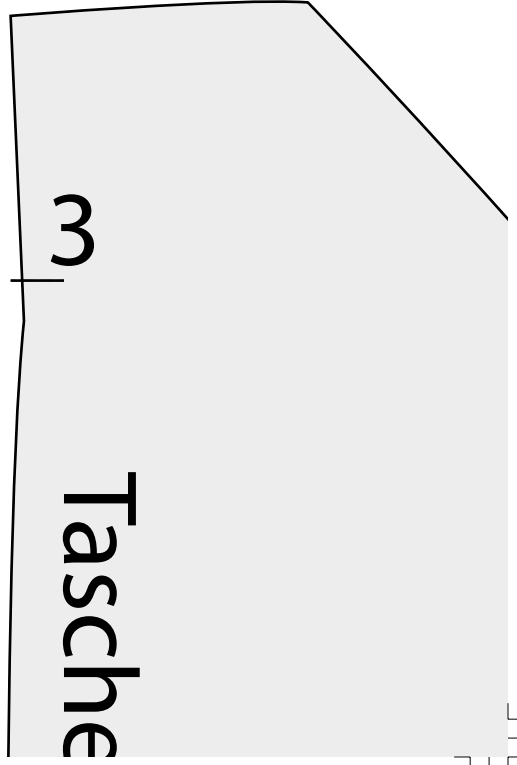
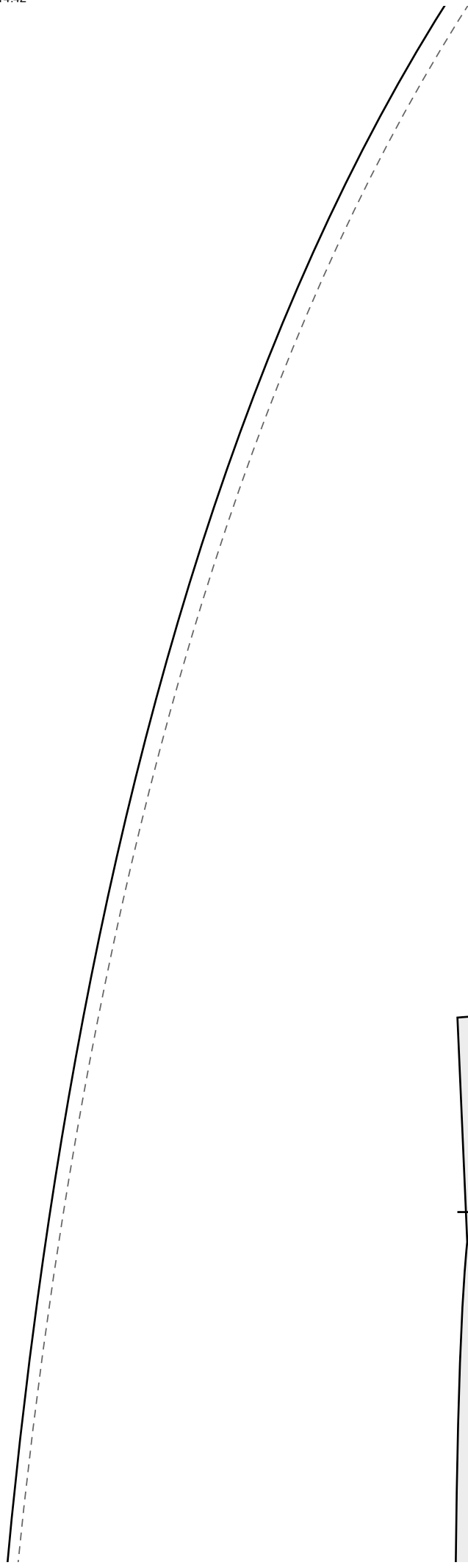




43

anlauf

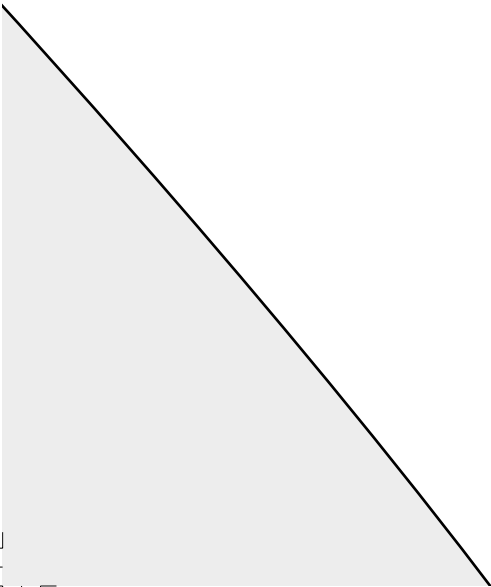




3

Tasche

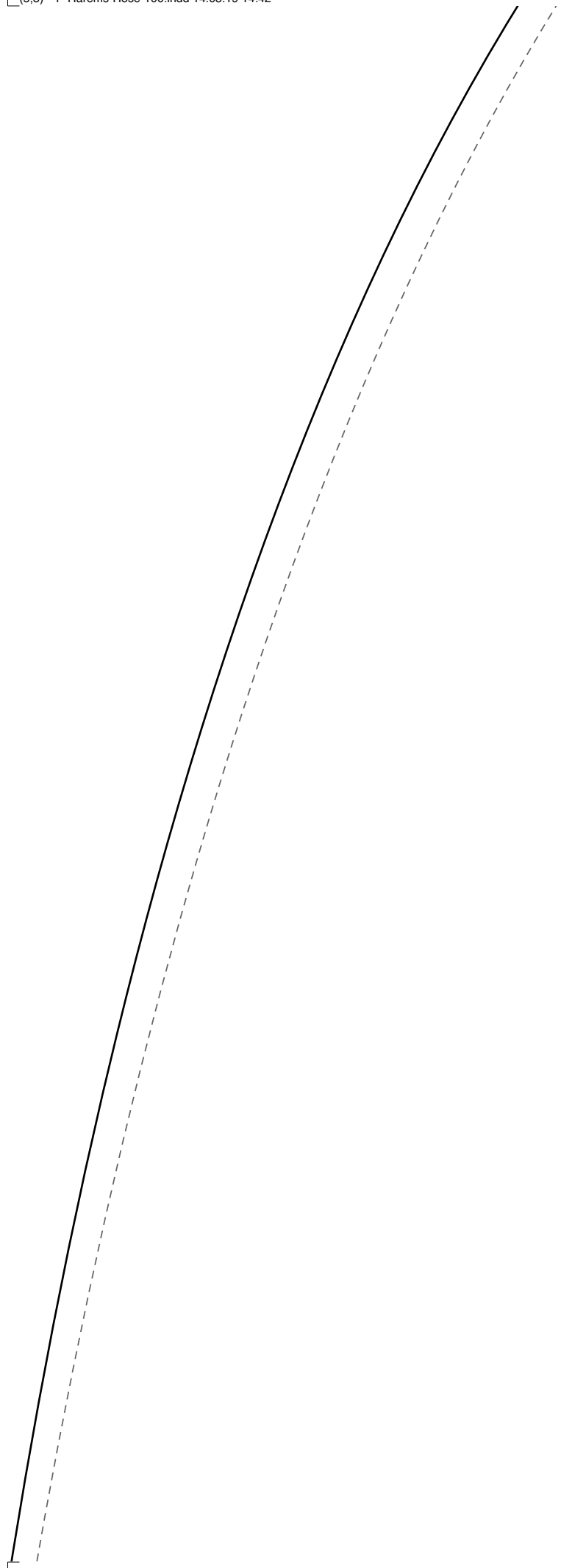
4



14

jf







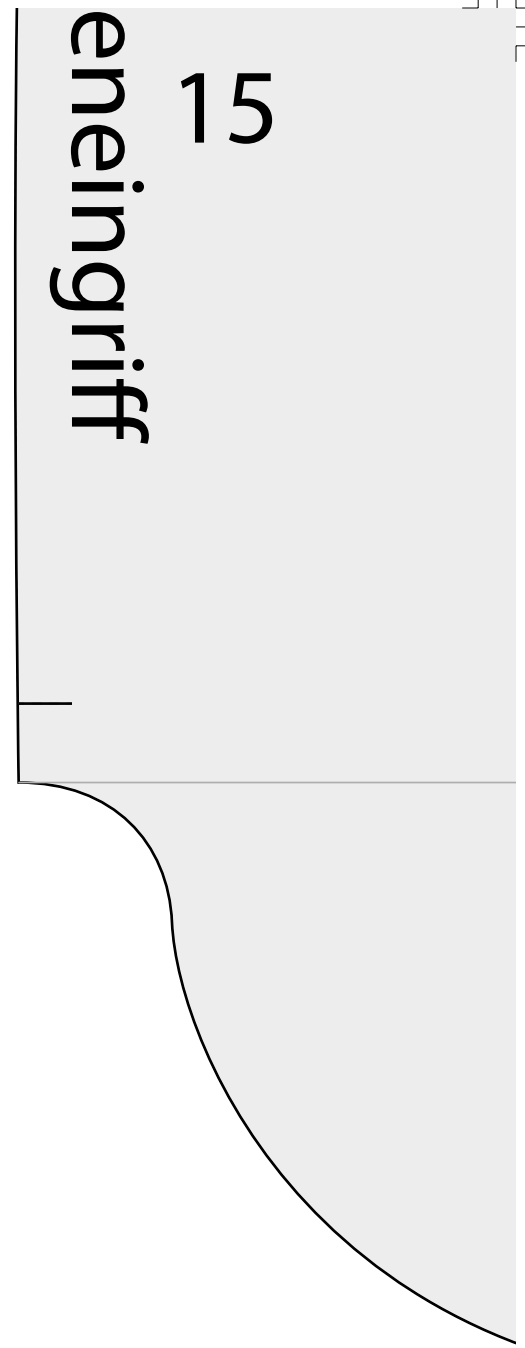
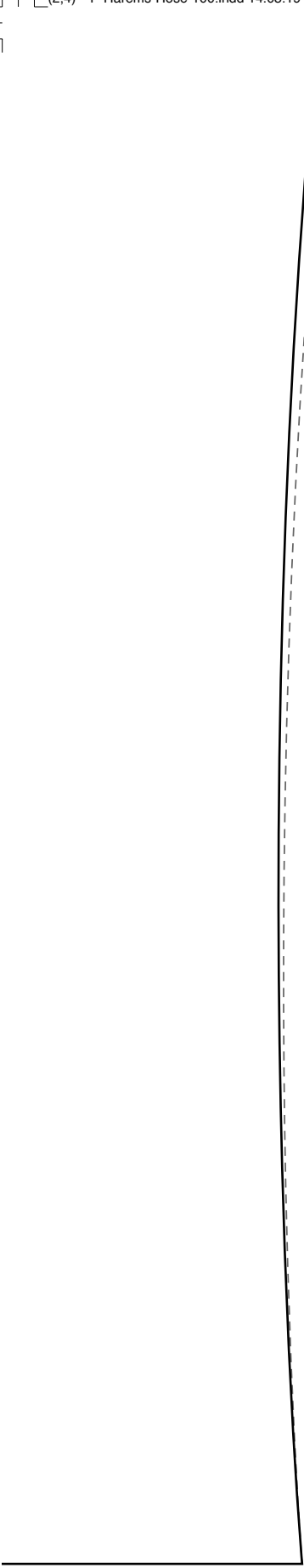
2,5

Beleg

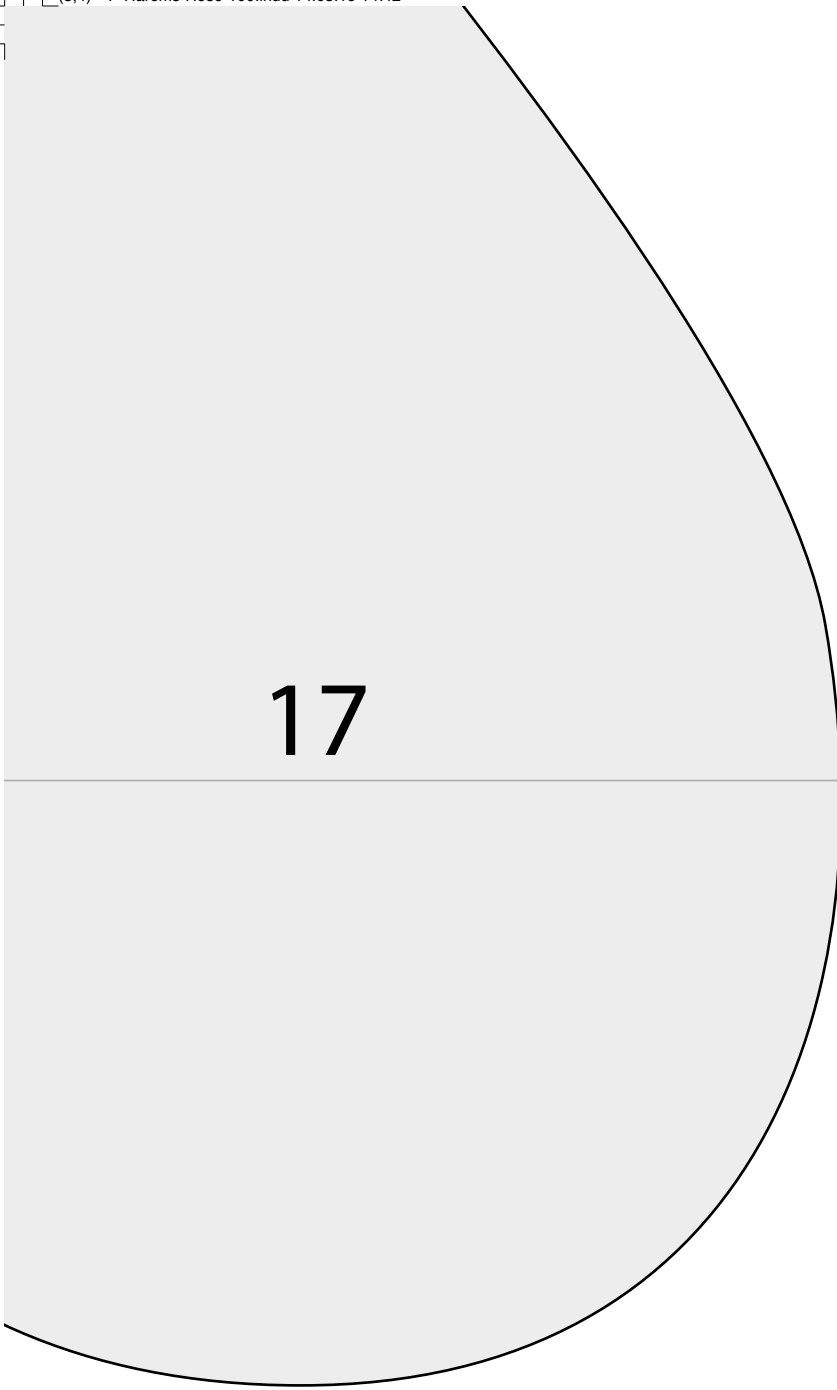
19

19,5

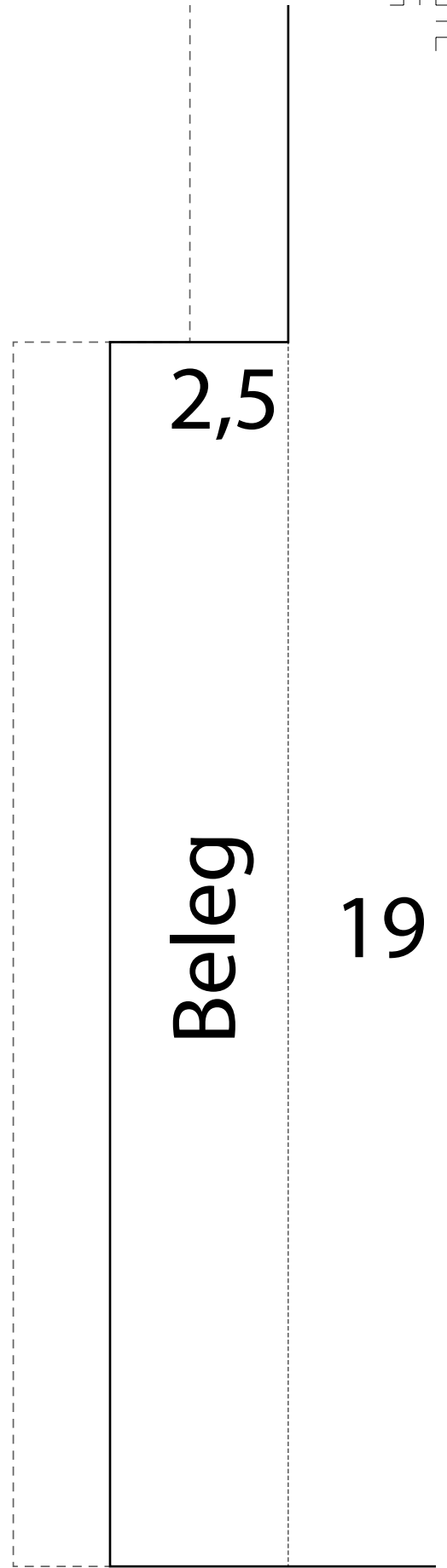
Vord. Hosenbein



Taschenbeu



utel



Hint. Hoser

)

19,5

nbein



