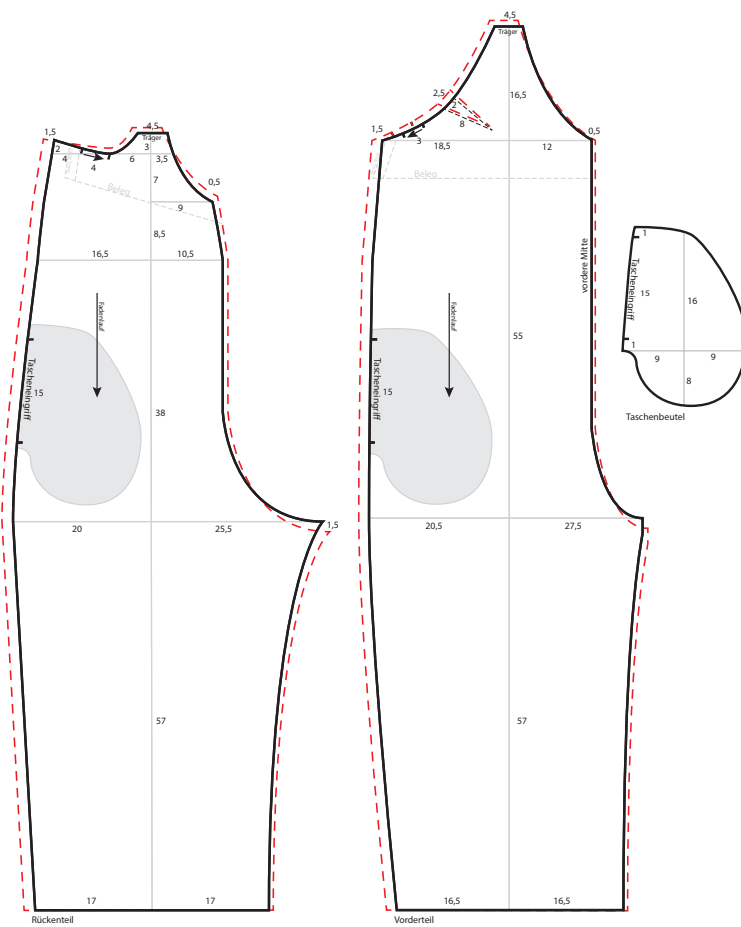


Jumpsuit

Kollektion N°9

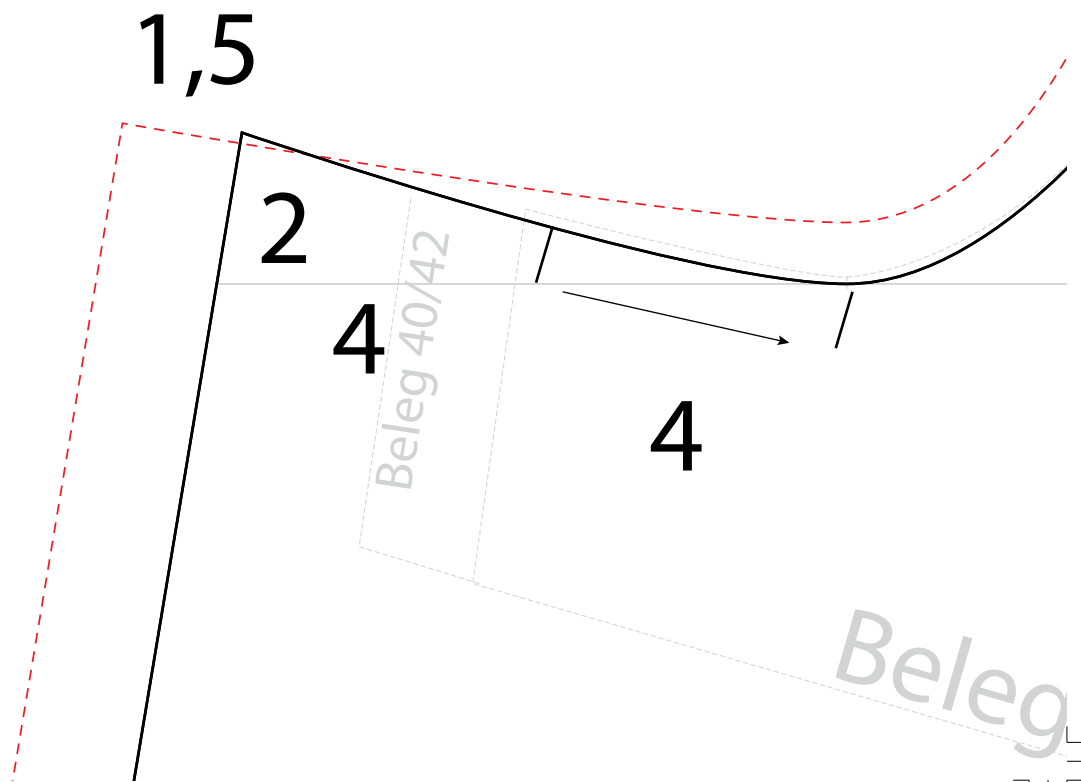
Größe 36/38 und 40/42 (gestrichelte Linie)

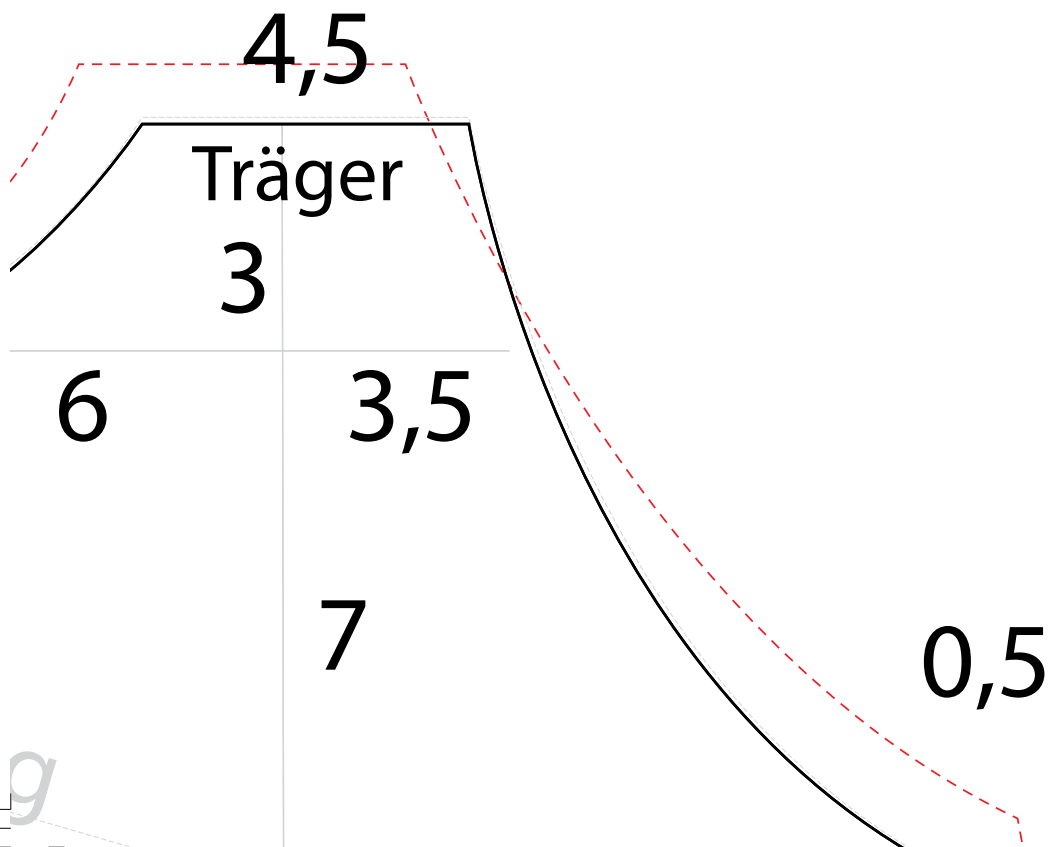
Drucken Sie die Schnittmusterseiten auf DIN A4 Papier aus. Achten Sie dabei darauf, dass das Druckergebnis in den Druckereinstellung nicht skaliert wird. Das Kontrollkästchen sollte genau 1 cm auf allen Seiten betragen.





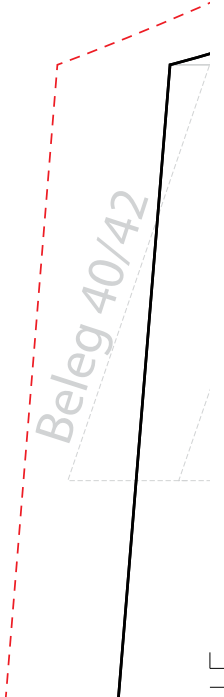
1cm

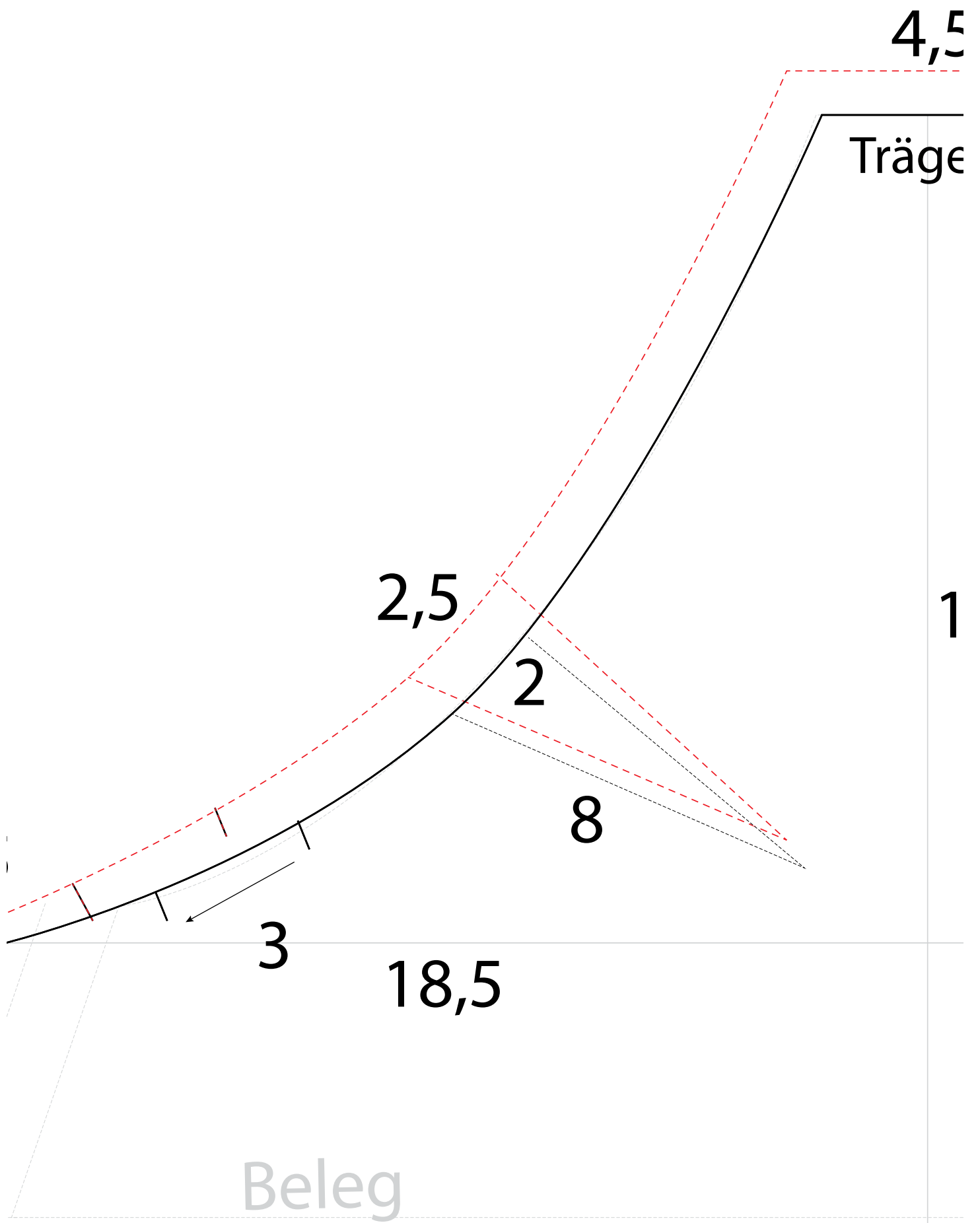




1,5

Beleg 40/42





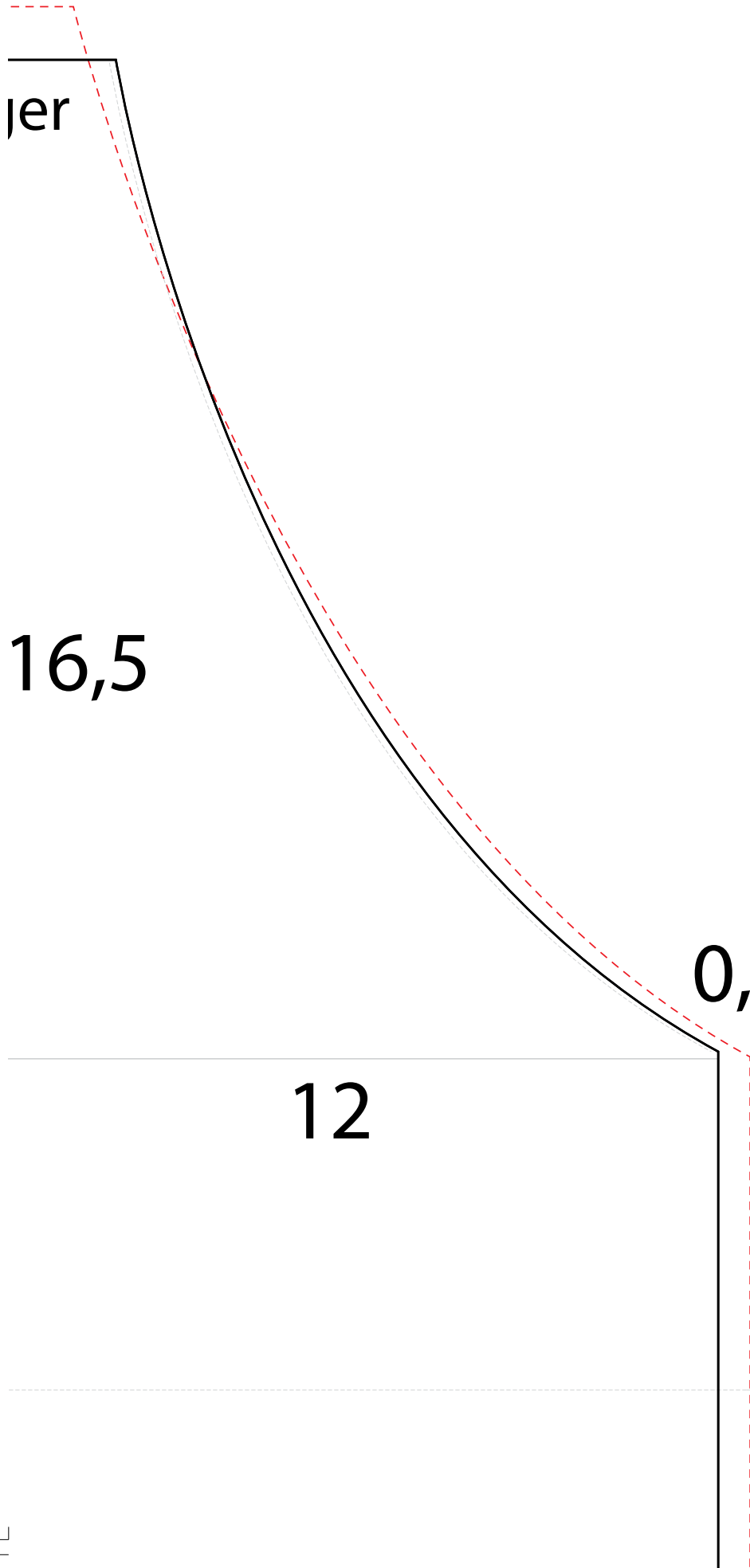
5

jer

16,5

0,5

12



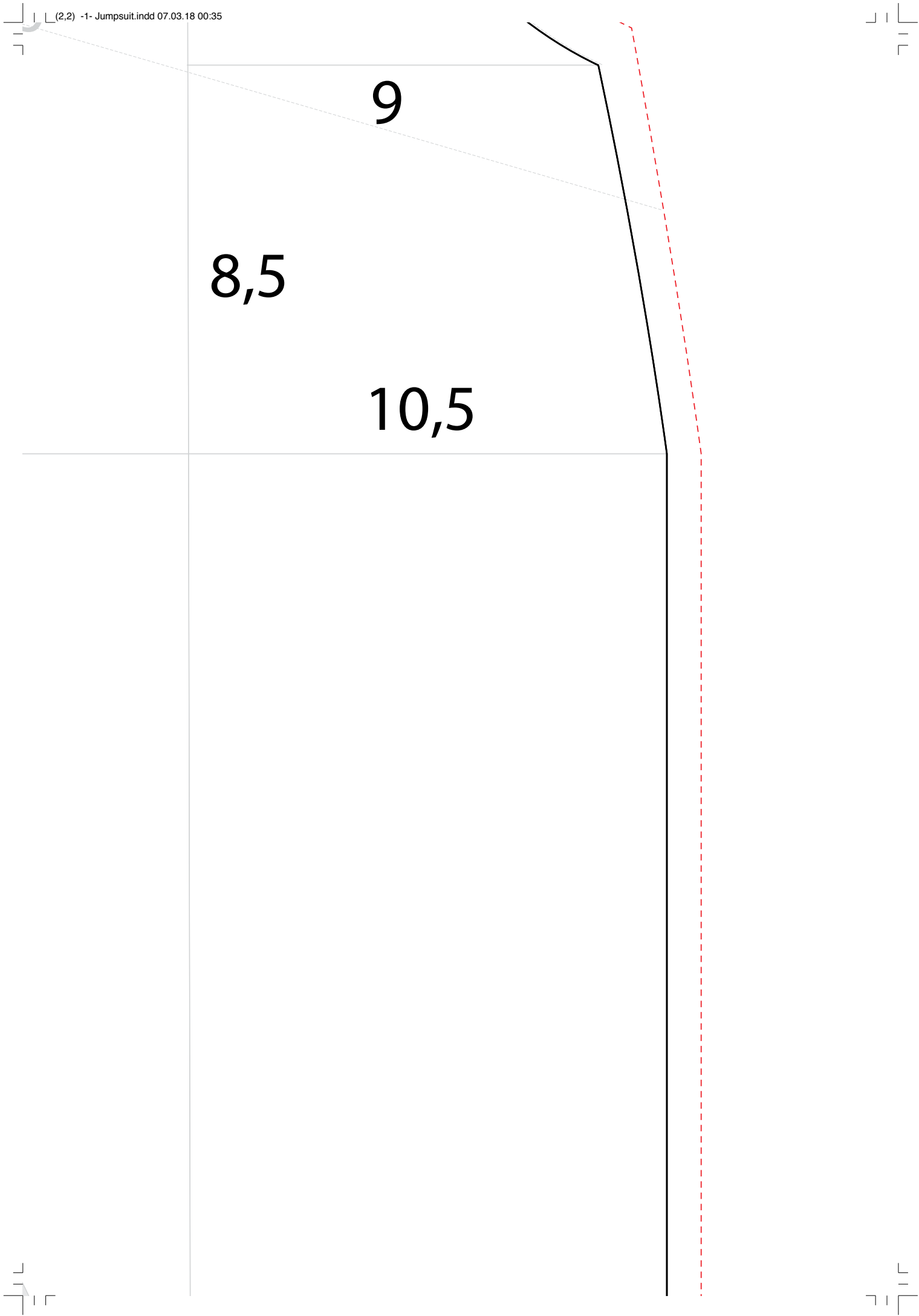


16,5

Fadenlauf

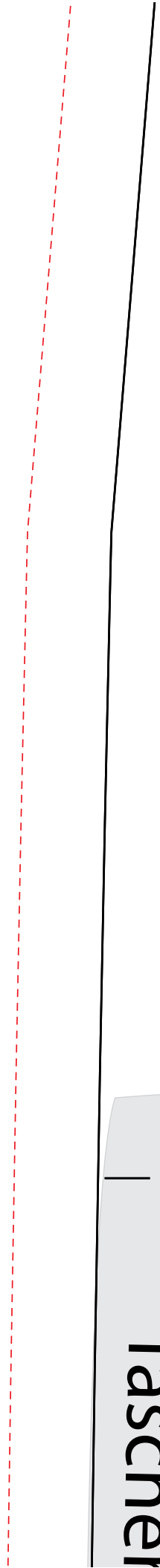
Tascher



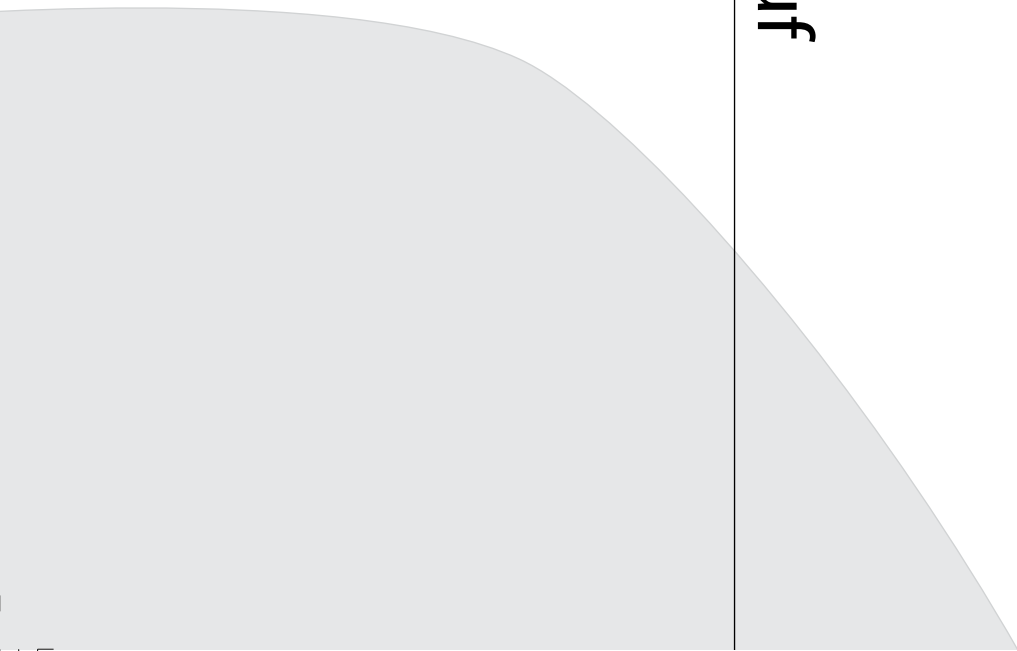




Tascher

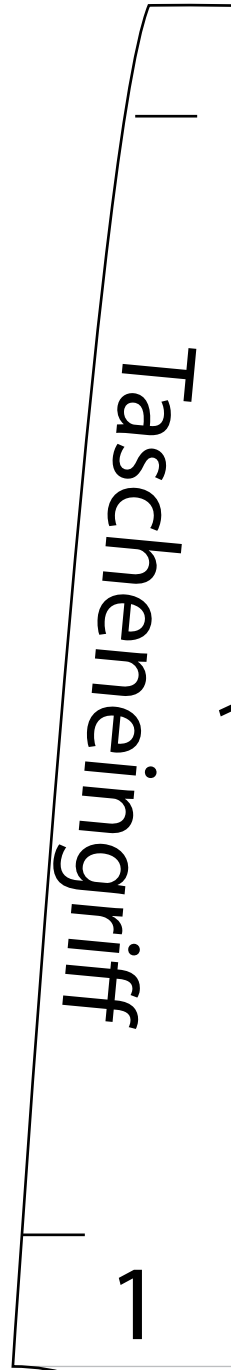


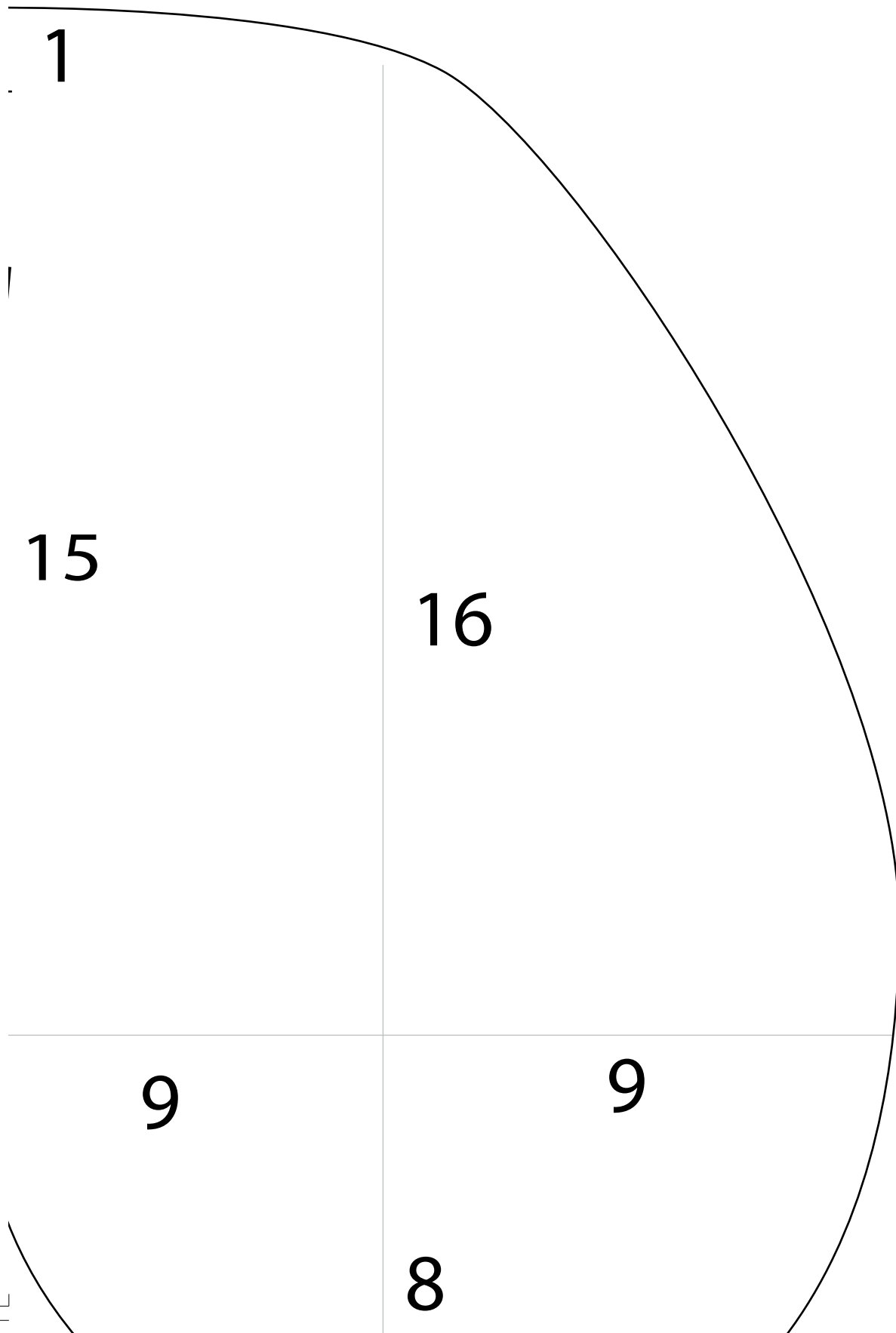
Fadenlauf





vordere Mitte

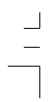
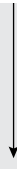




Einengriff

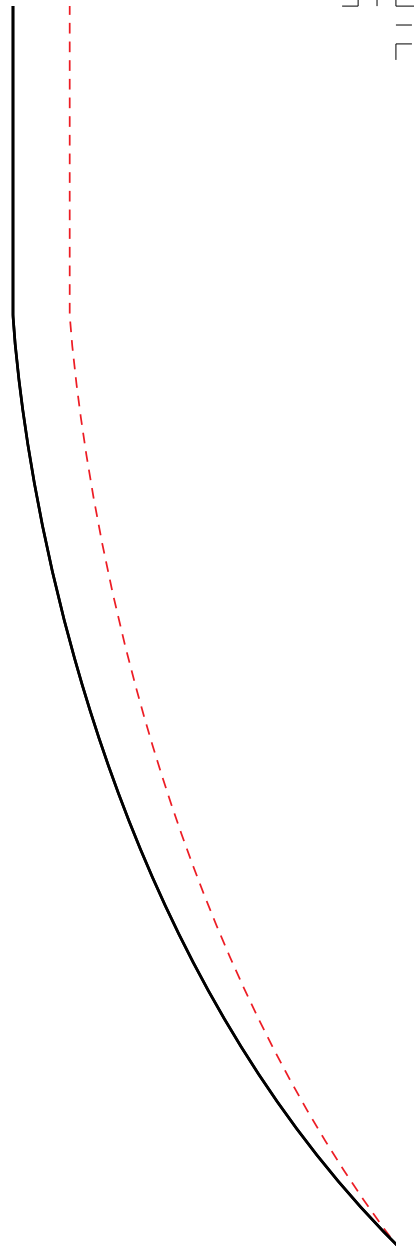
15

20





38

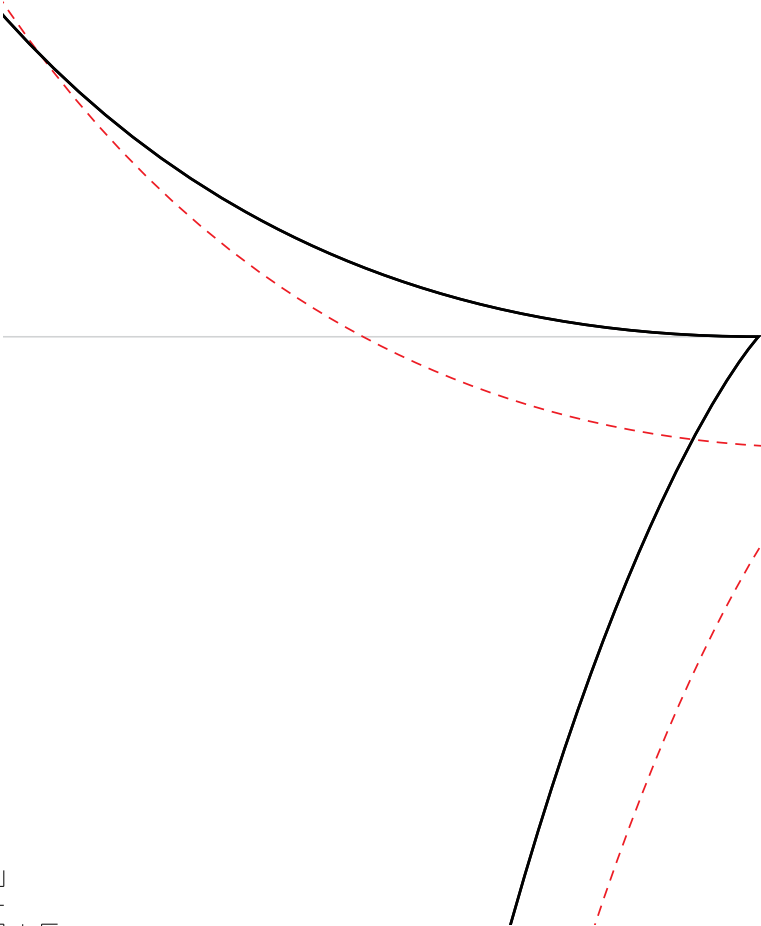


25,5

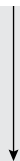


1
neingriff

1,5



15



20,5



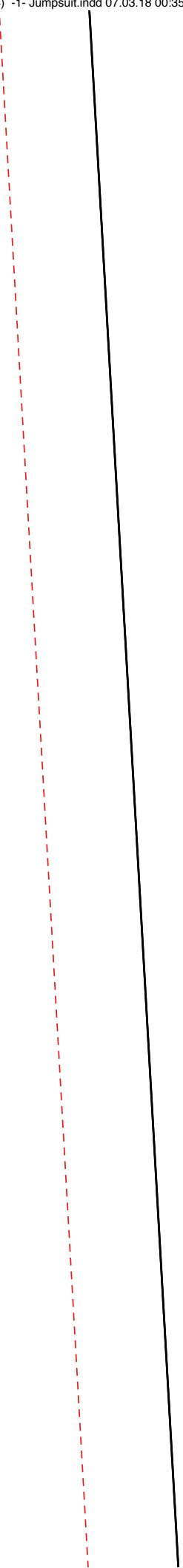
Tasc

27,5

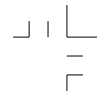
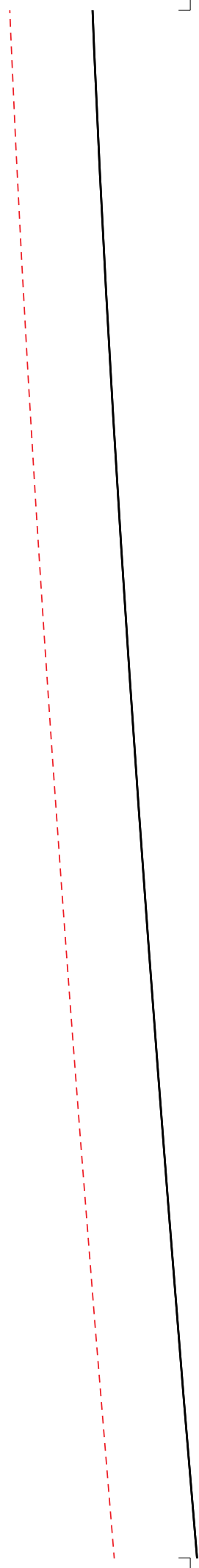
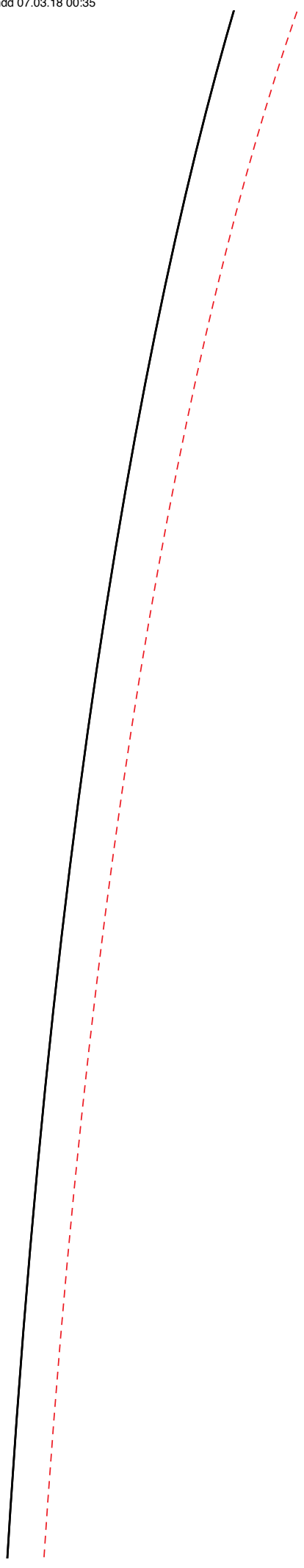


chenbeutel



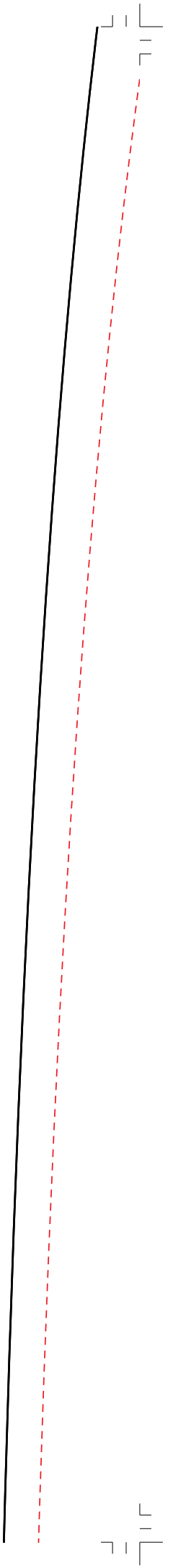


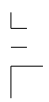
57





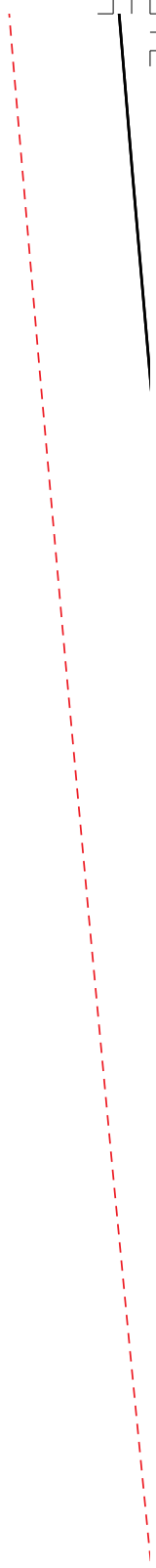
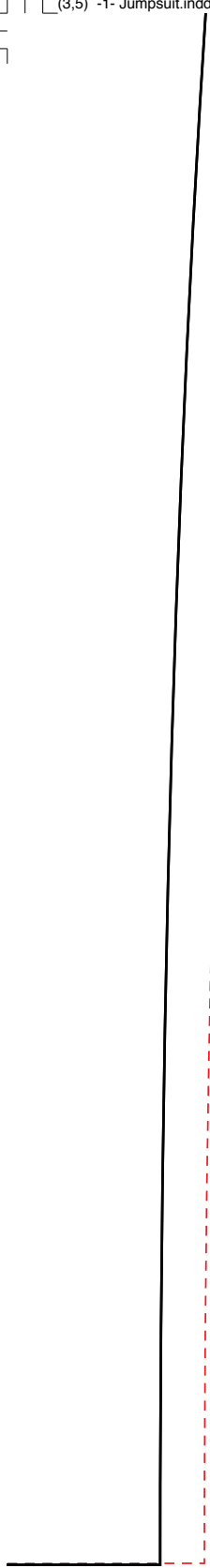
57





17

Rückenteil



16,5

Vorderteil



16,5



