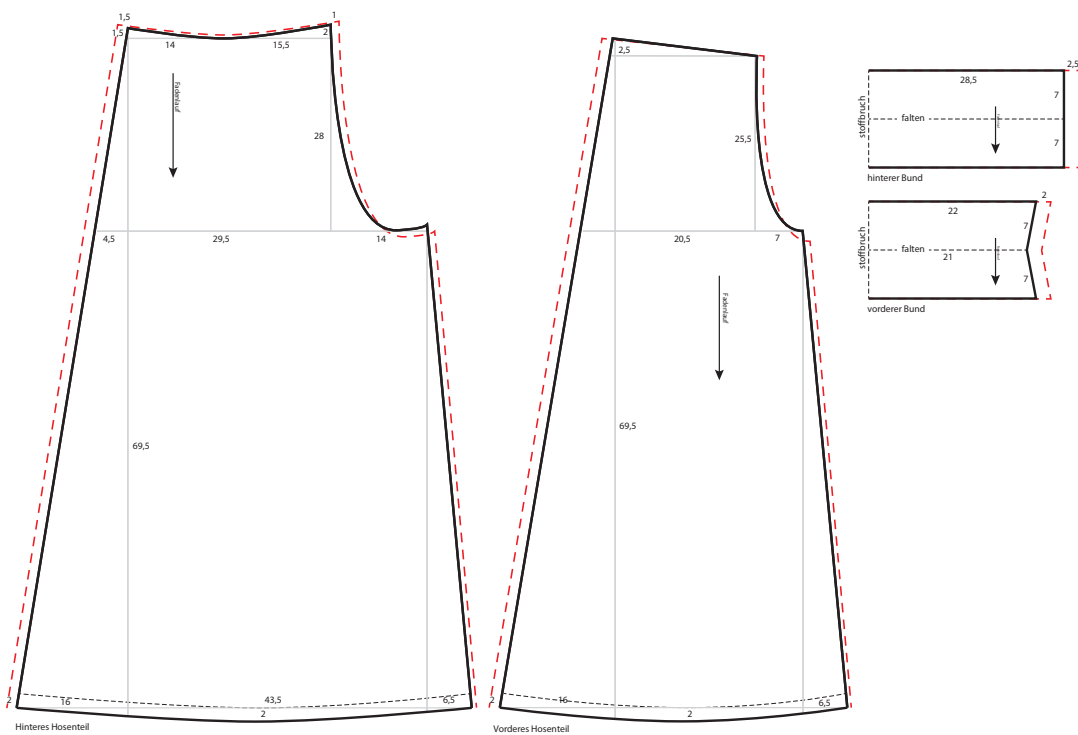


Palazzo-Hose
Kollektion N°9

Größe 36/38 und 40/42 (gestrichelte Linie)

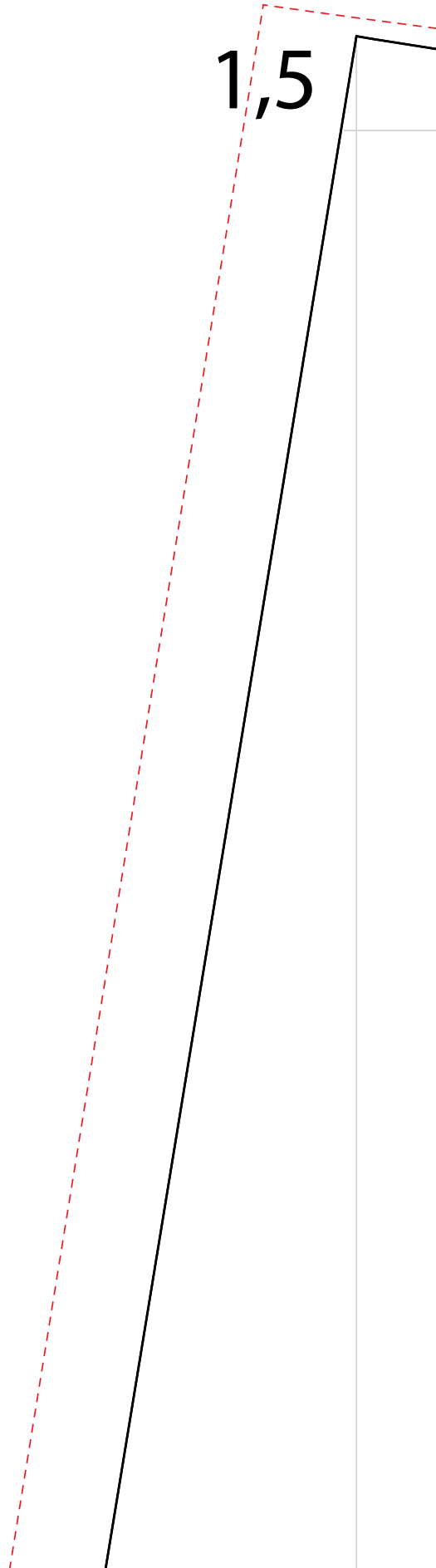
Drucken Sie die Schnittmusterseiten auf DIN A4 Papier aus. Achten Sie dabei darauf, dass das Druckergebnis in den Druckereinstellung nicht skaliert wird. Das Kontrollkästchen sollte genau 1 cm auf allen Seiten betragen.

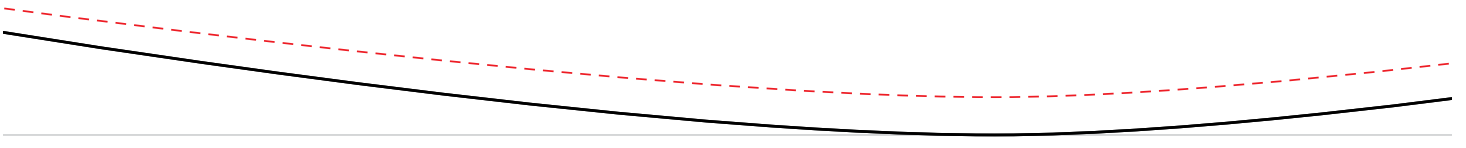




1cm

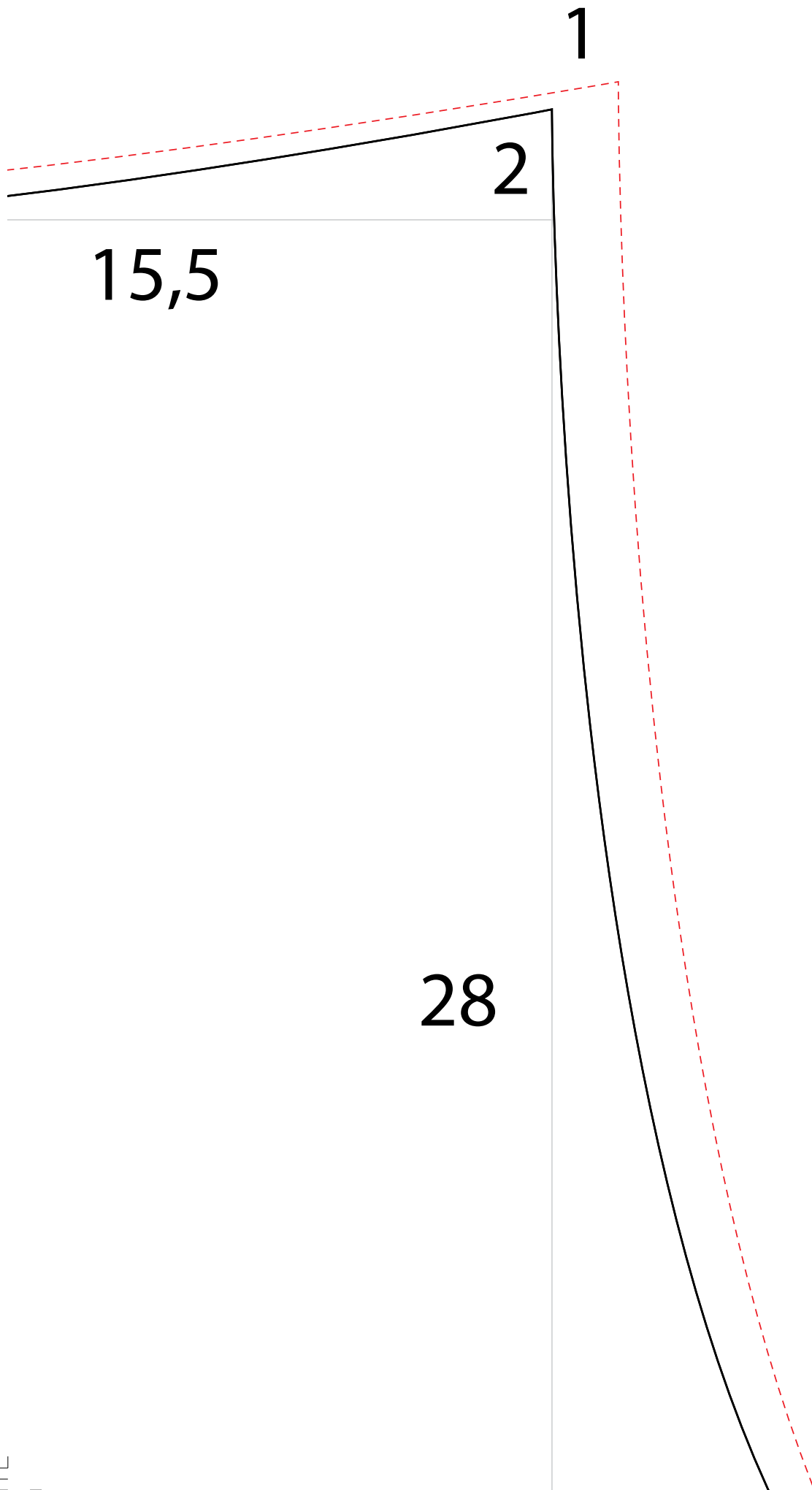
1,5
1,5

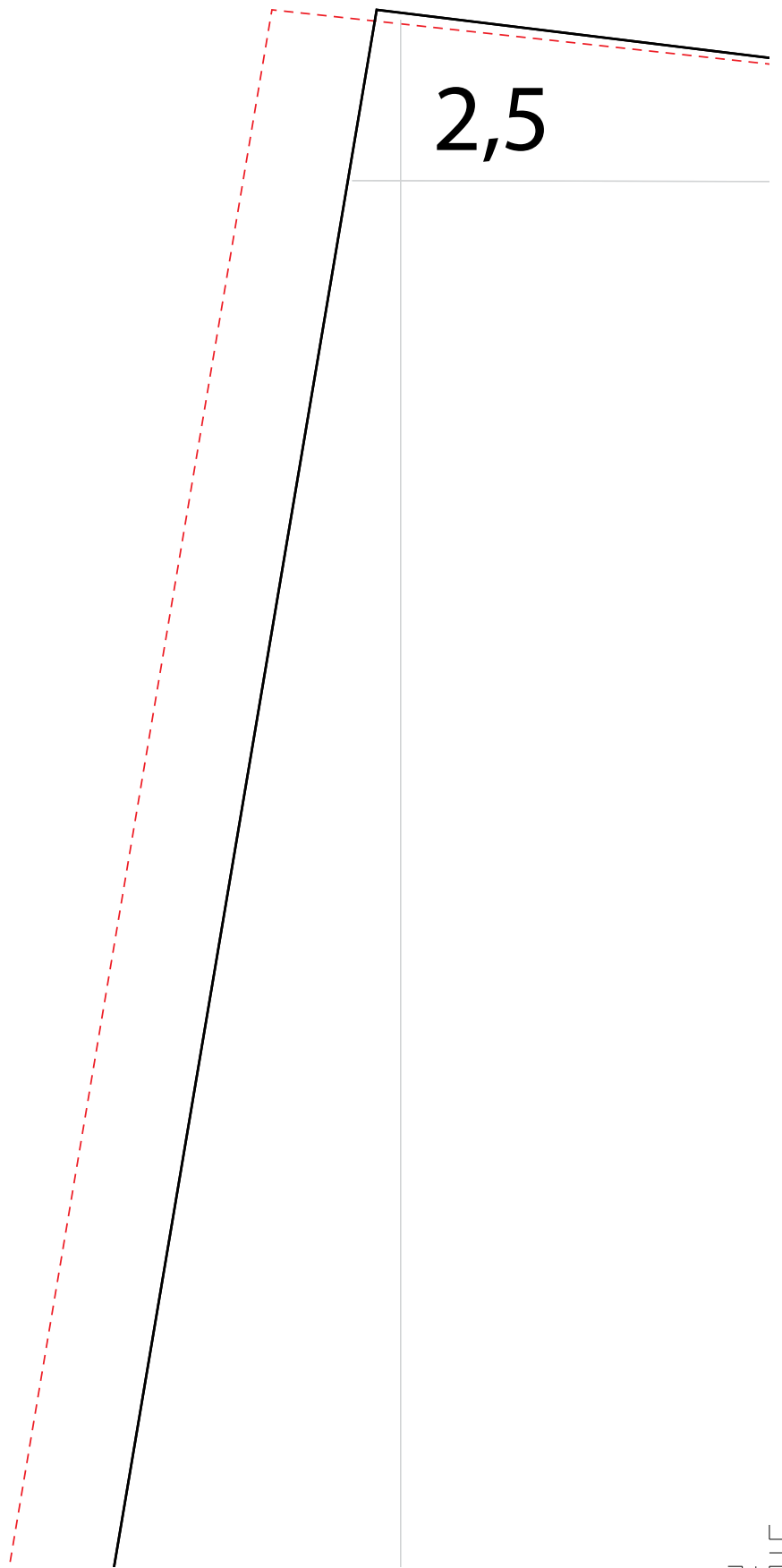




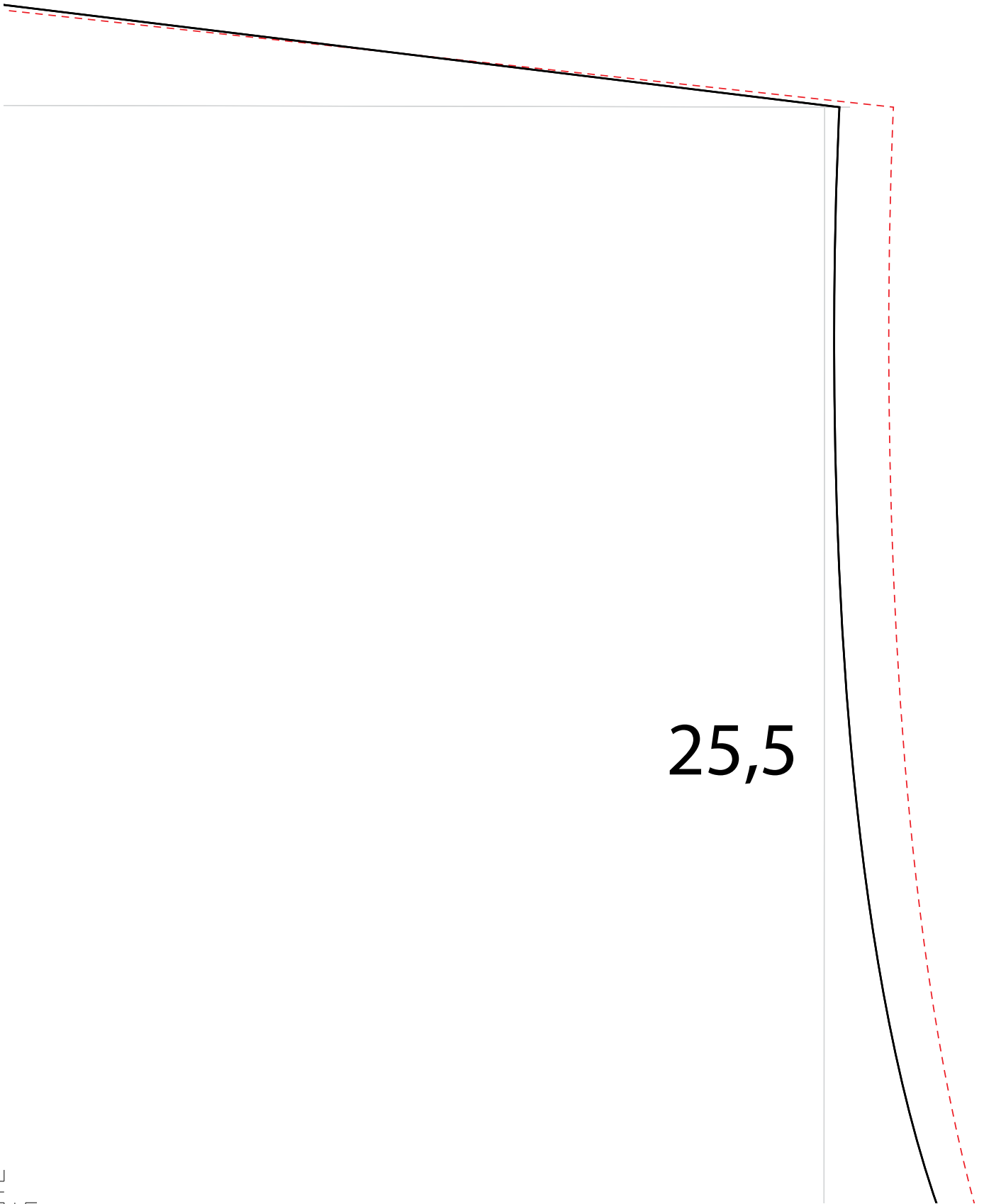
14

Fadenlauf





2,5



25,5

stoffbruch

fal

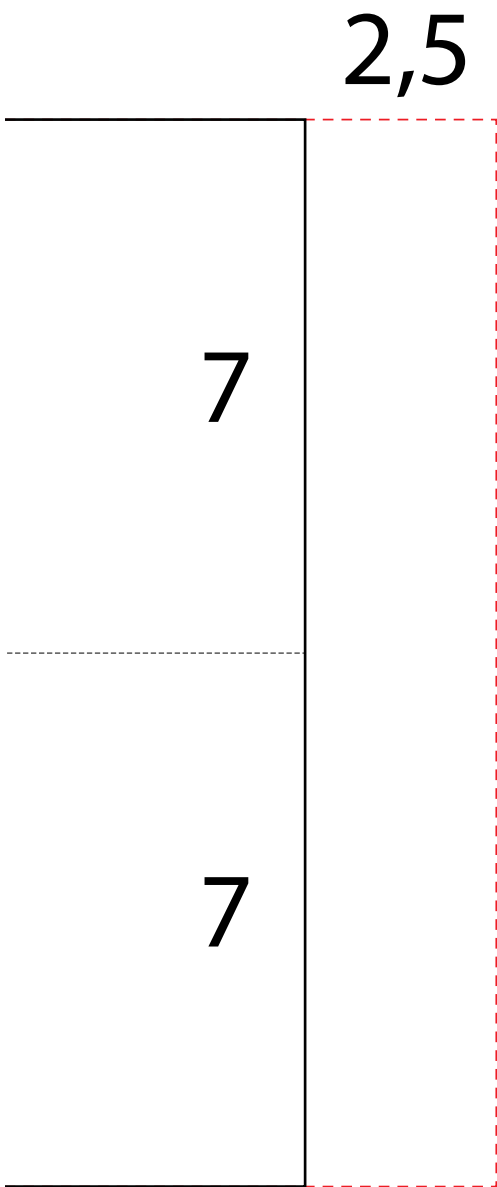
hinterer Bu

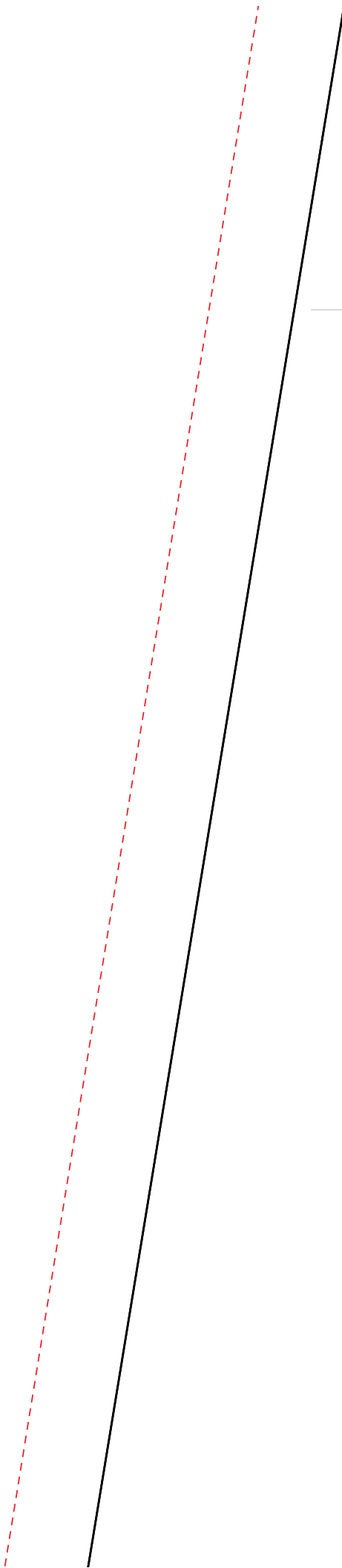
28,5

alten

Fadenlauf

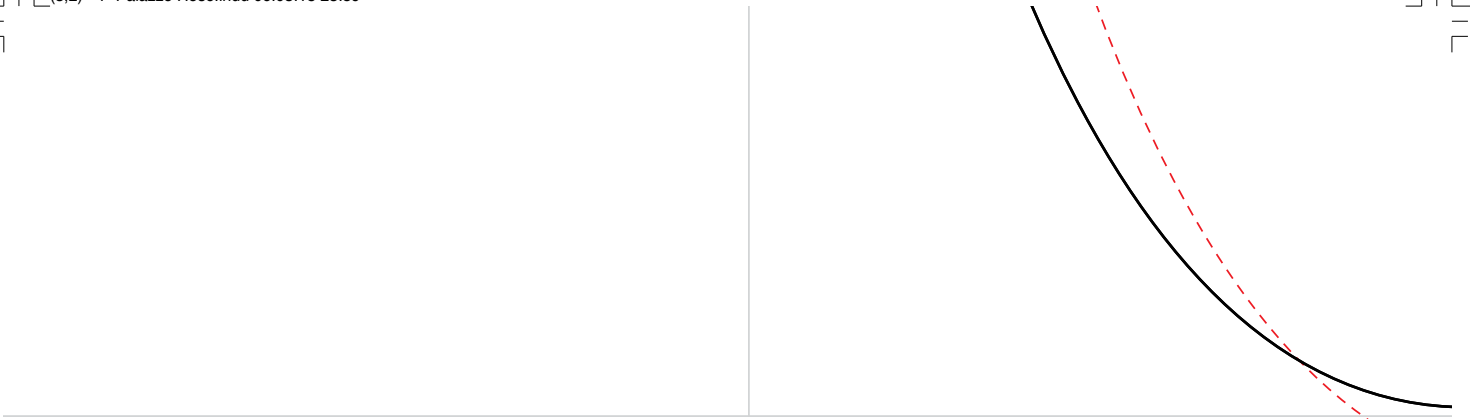
und





4,5

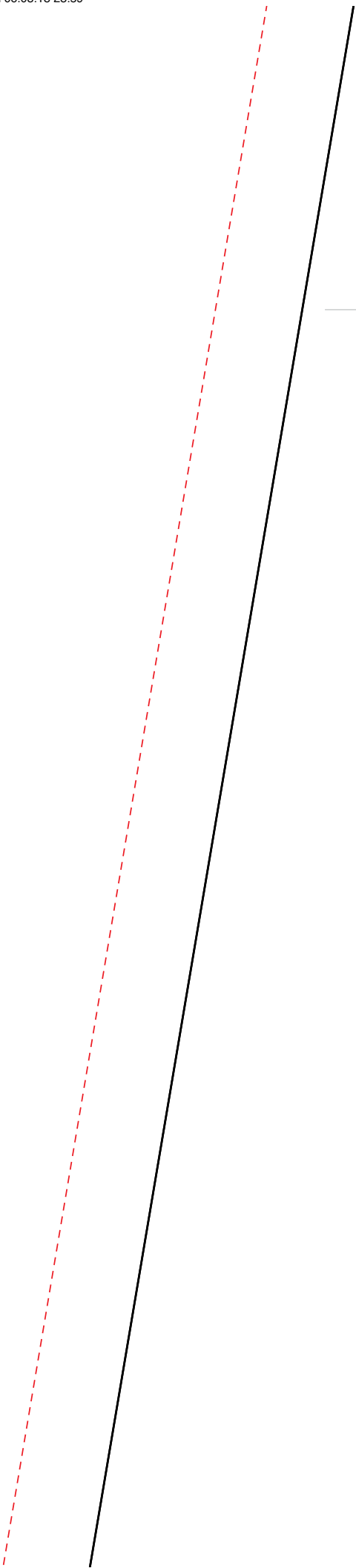
29,5

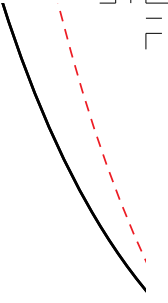


14





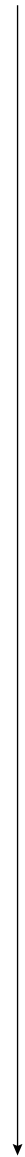


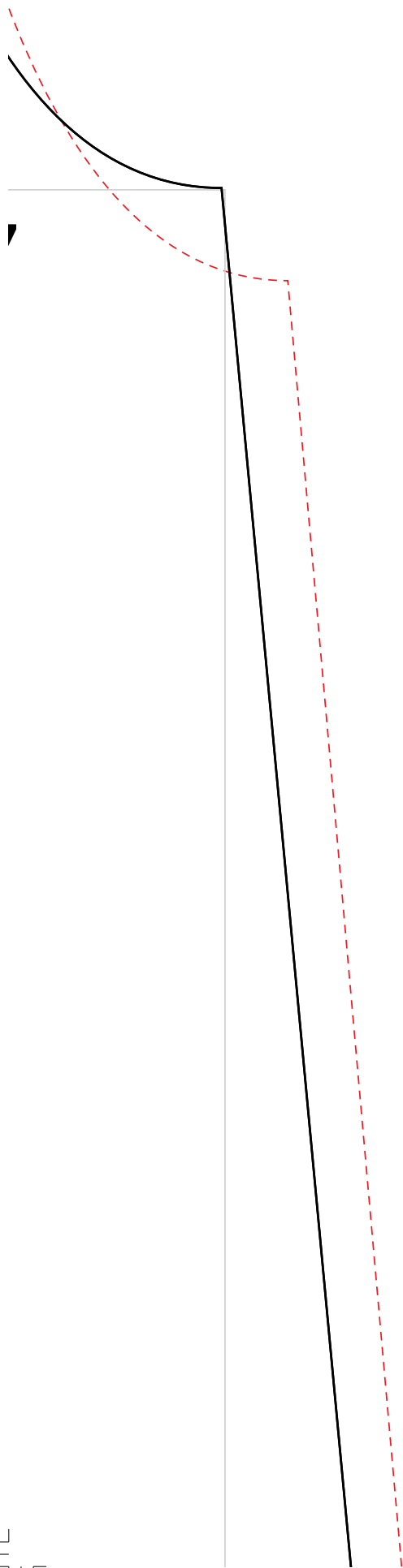


20,5

7

Fadenlauf





stoffbruch

fal

vorderer B





22

7

alten

21

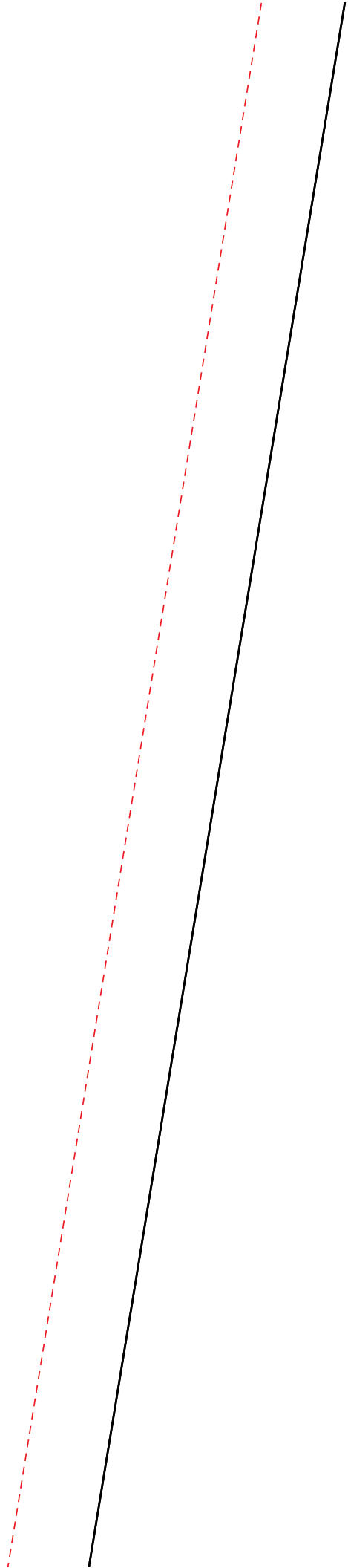
Fadenlauf

7

Bund





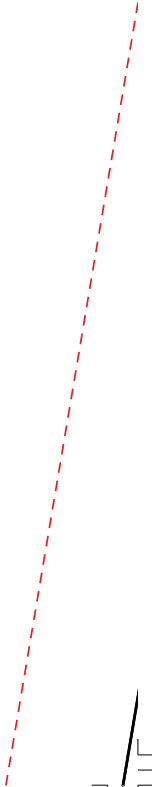
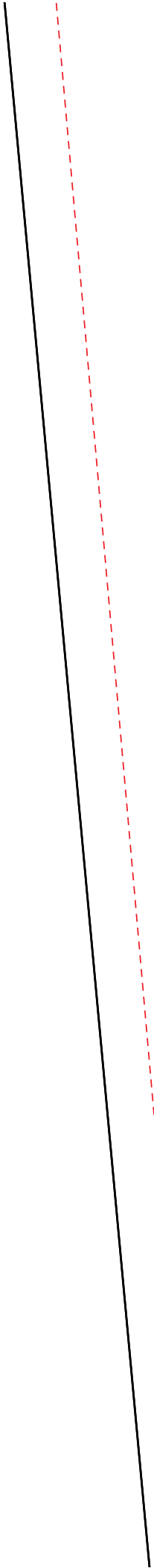




69,5

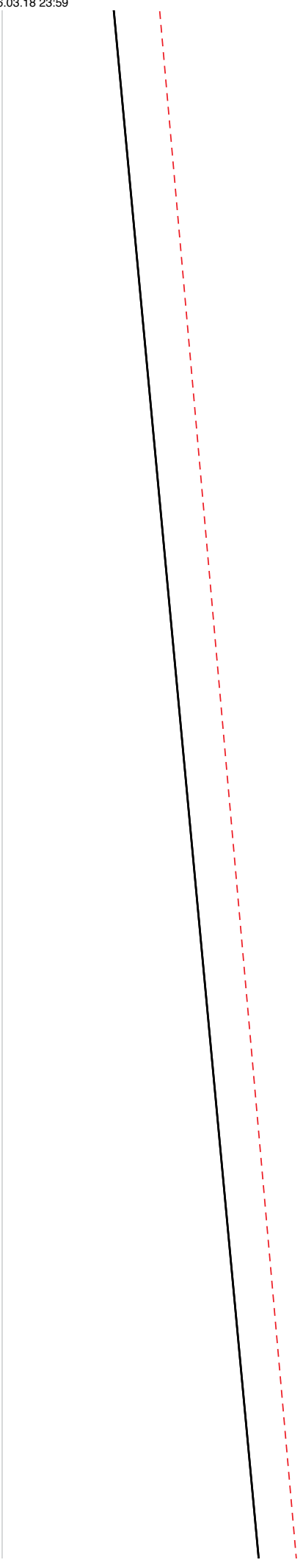




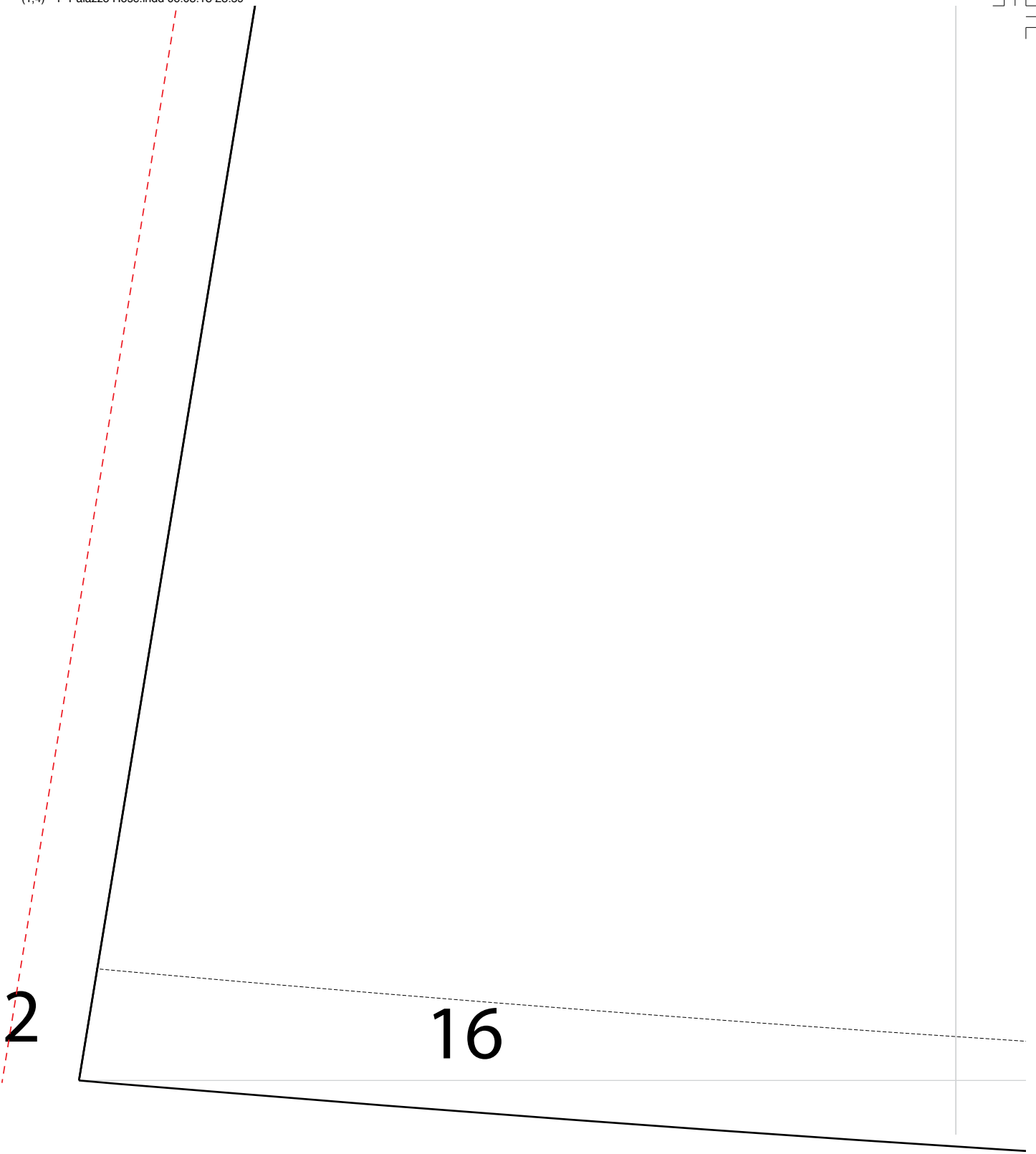


69,5

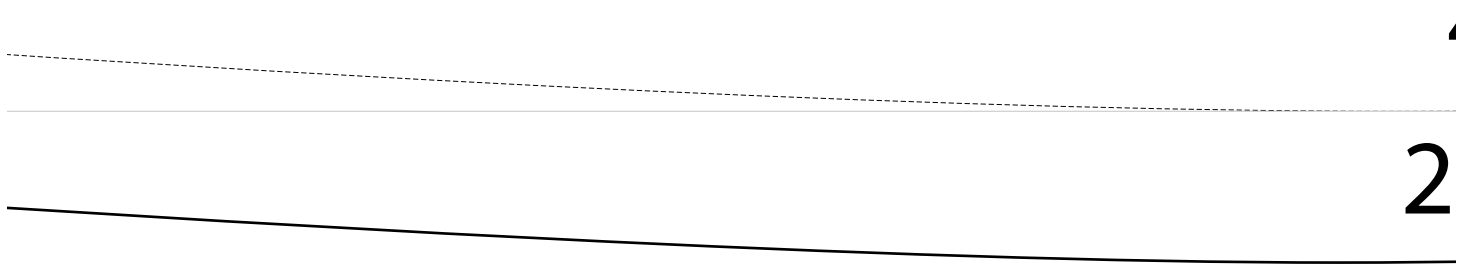








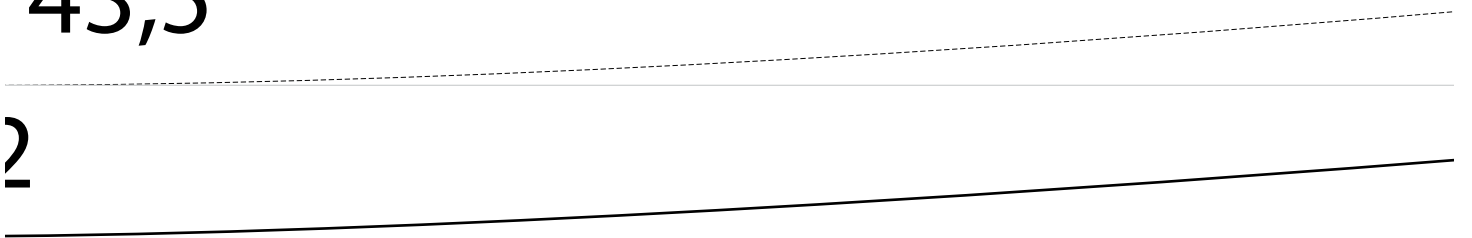
Hinteres Hosenteil

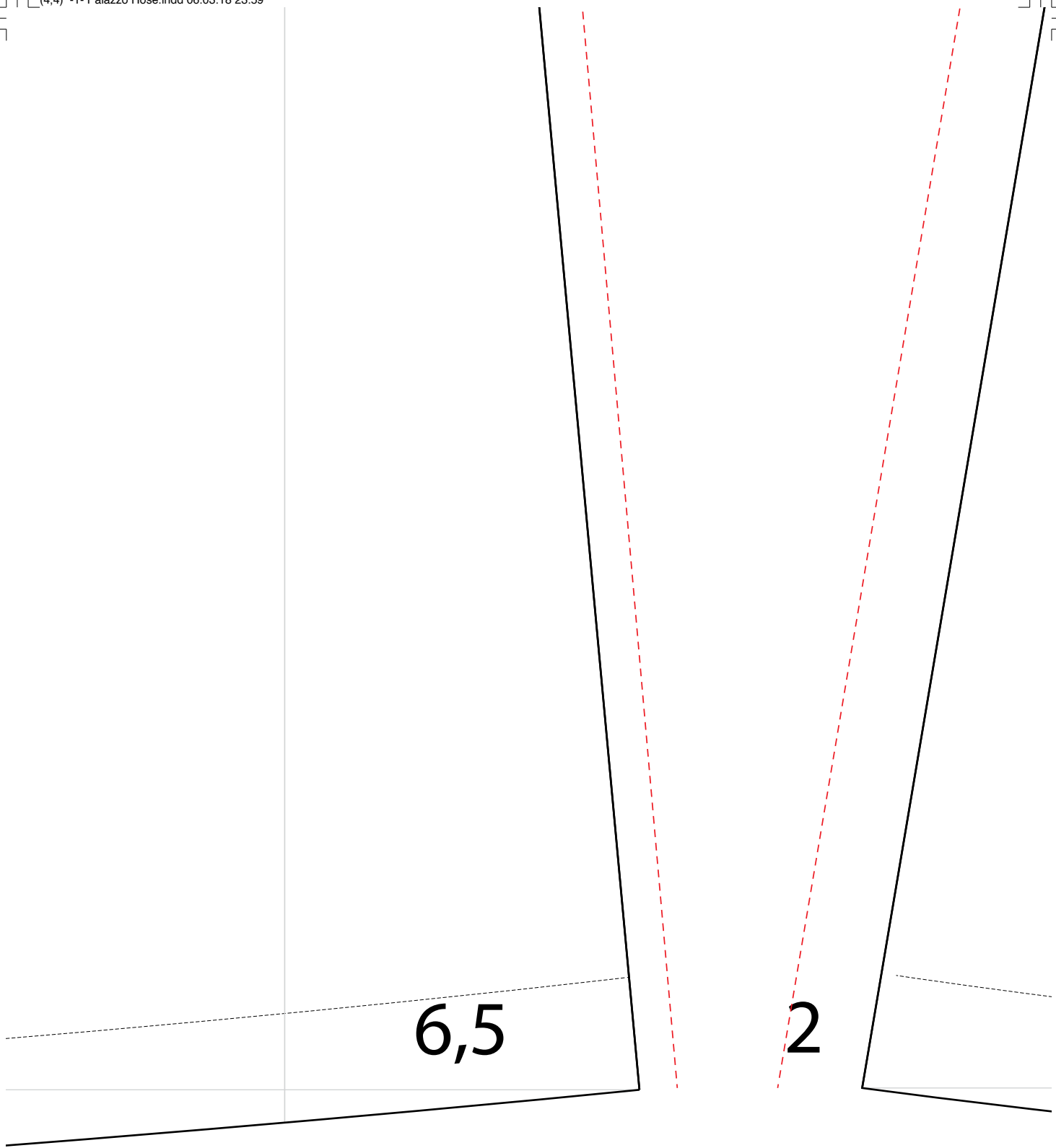




43,5

2





Vordere



16

es Hosenteil



2

6,5



