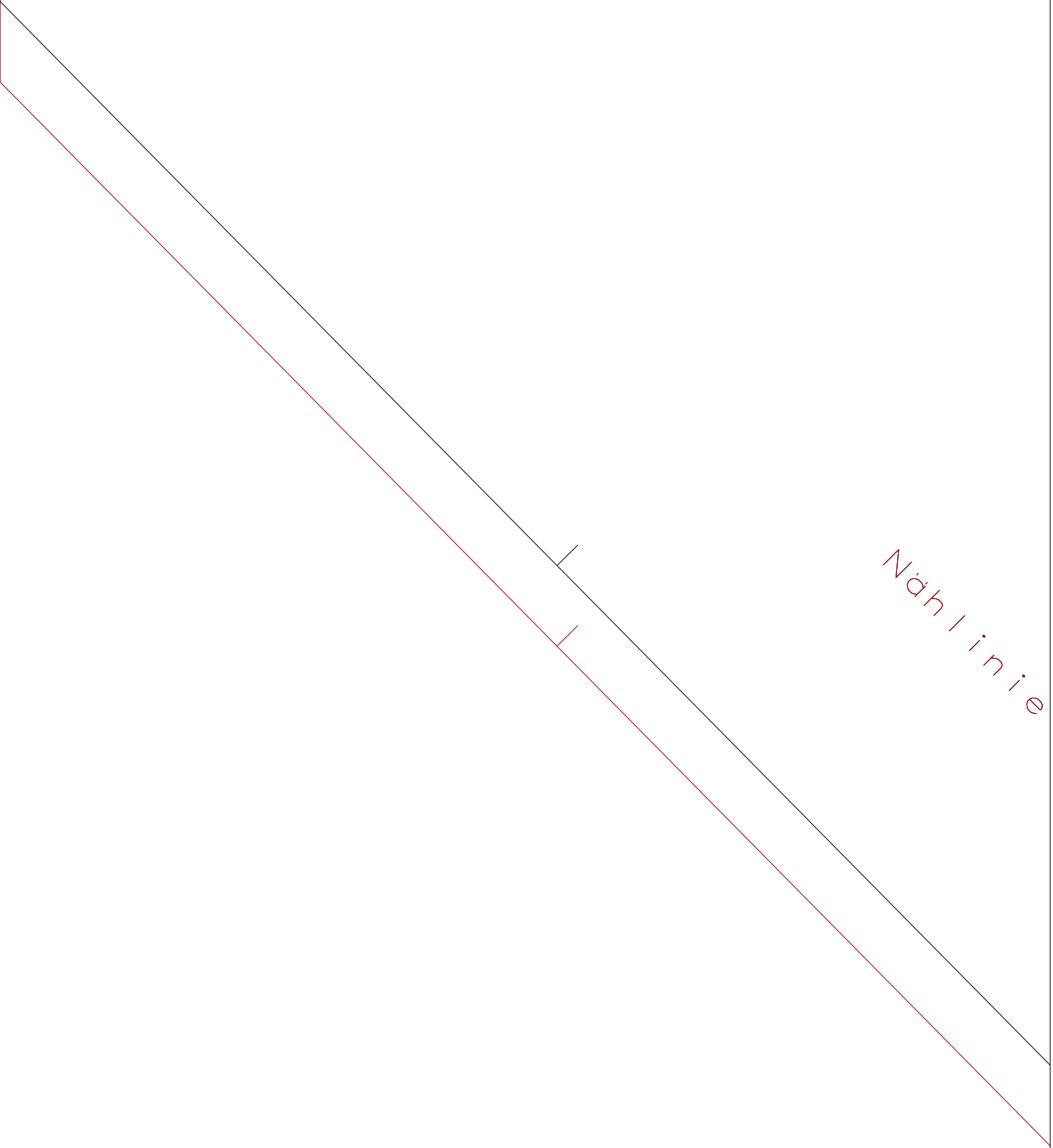
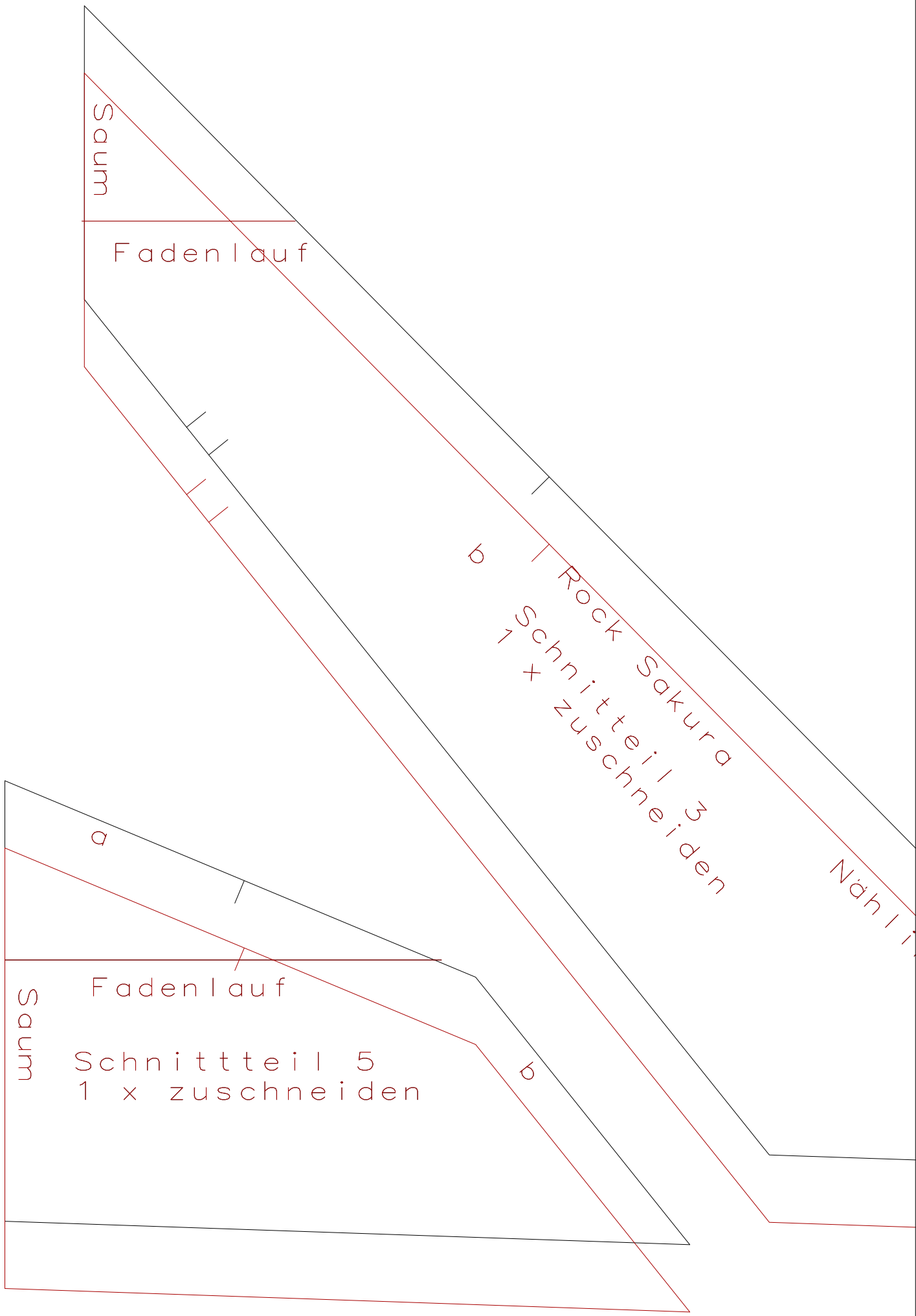


1 cm





Nählinie

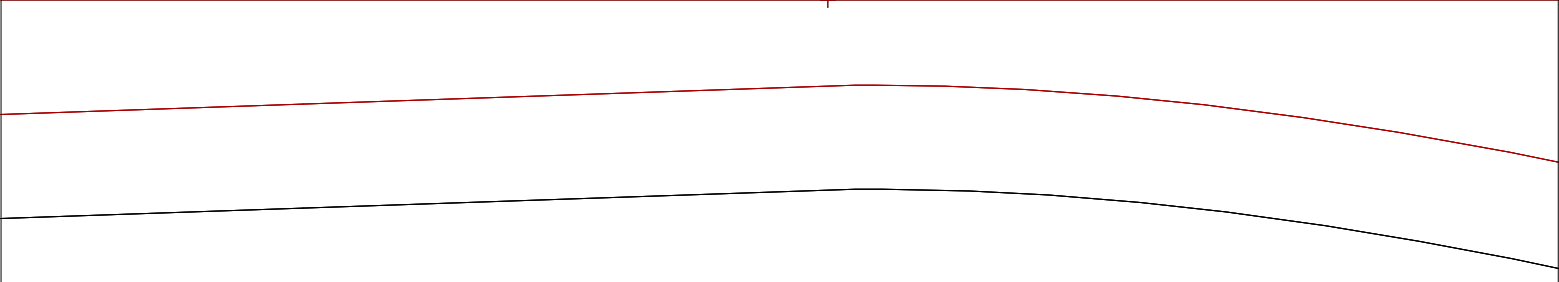




Rock Sakura
Rückenteil
Oberstoff – 2 x zuschneiden

nlauf

Reißverschluss



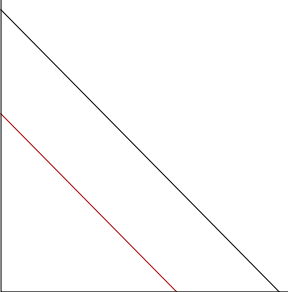
Rock mit bunten Streifen
 Vorderteil
 1 x zuschneiden

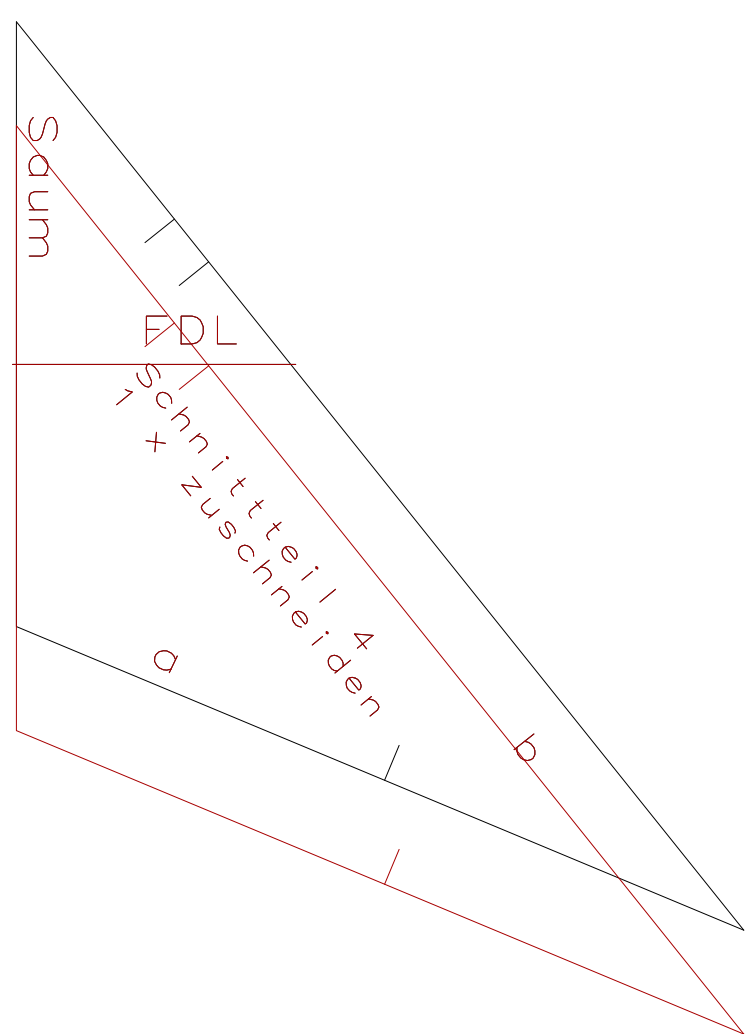
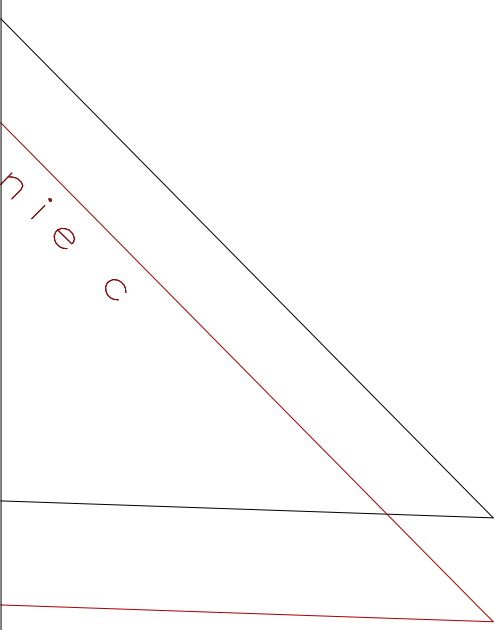


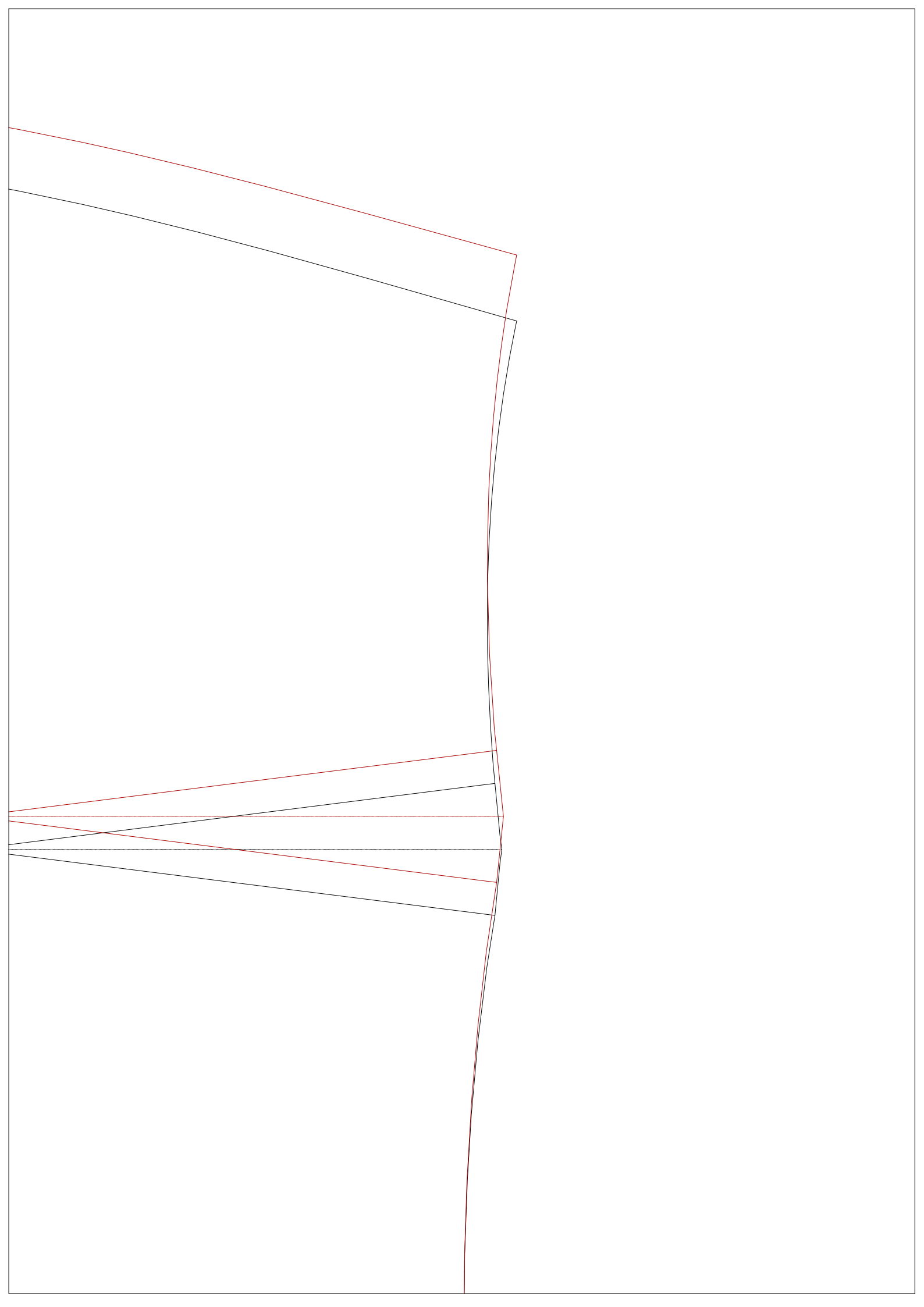
fen

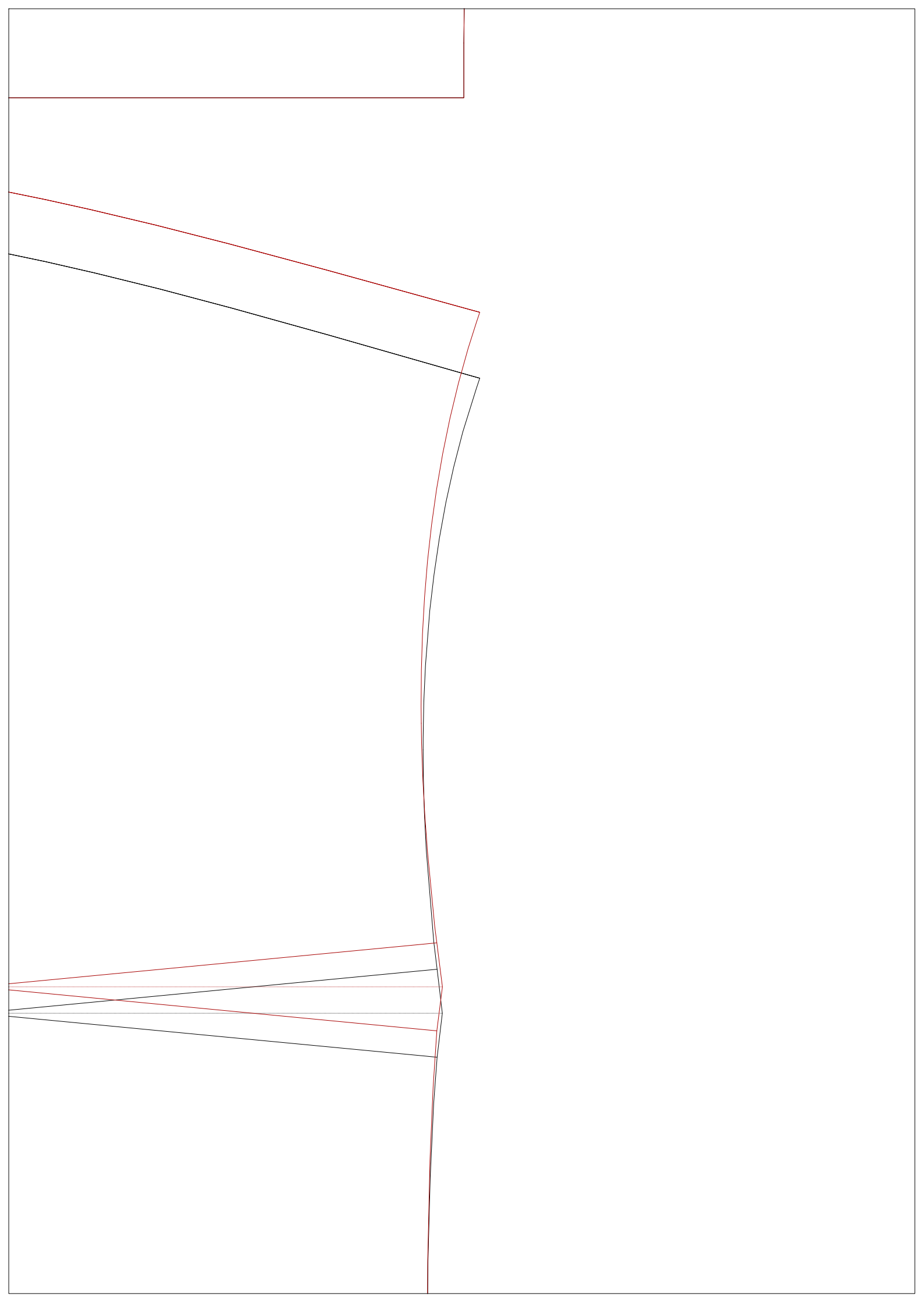
Vordere Mitte/Fadenlauf

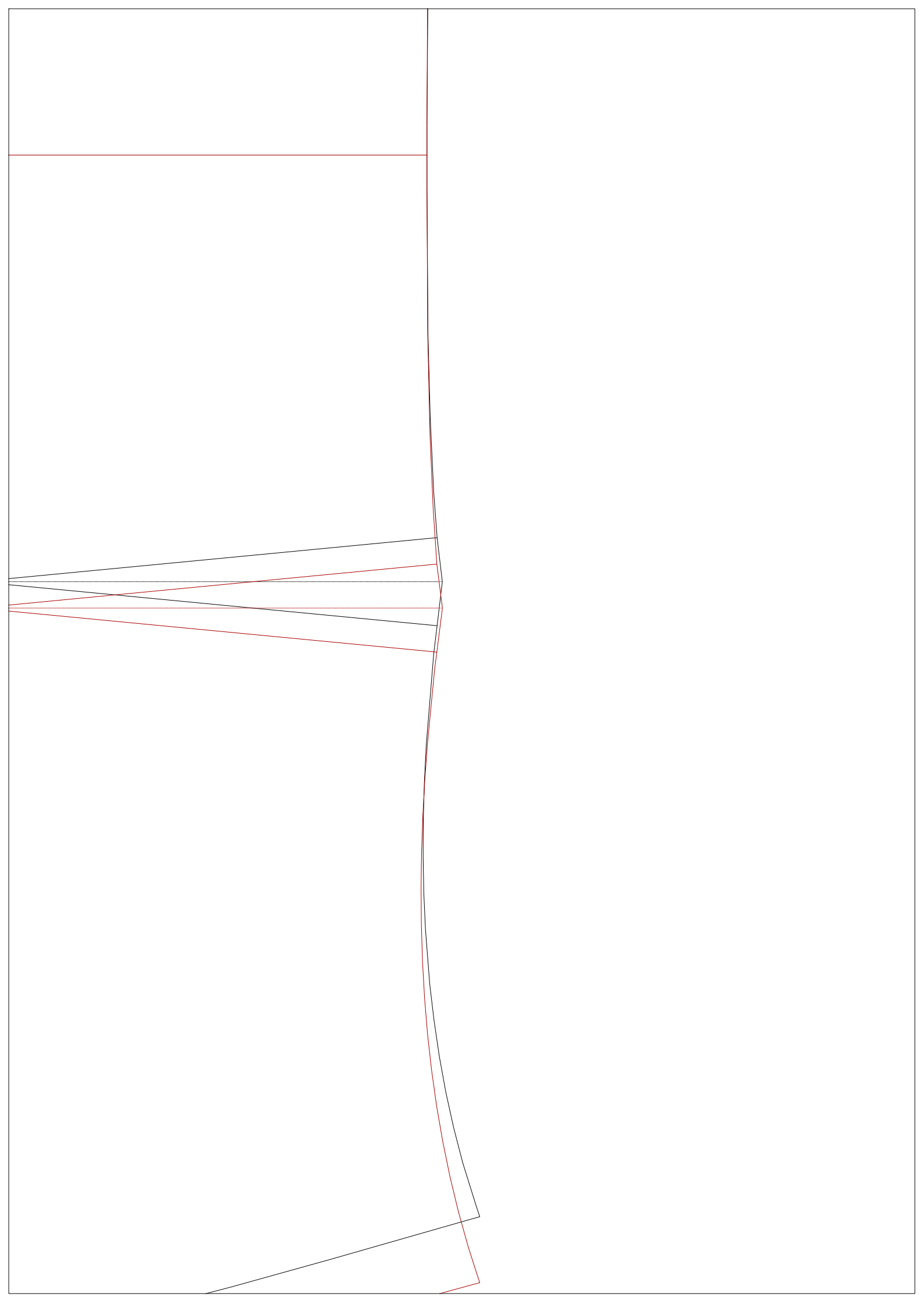
9











Bruch/Fadenlauf

Rock Sakura
Vorder teil | Beleg
1 x zuschneiden im Bruch

+ +

Rock Sakura
Beleg RT
2 x zuschneiden

Hintere Mitte/
Fadenlauf