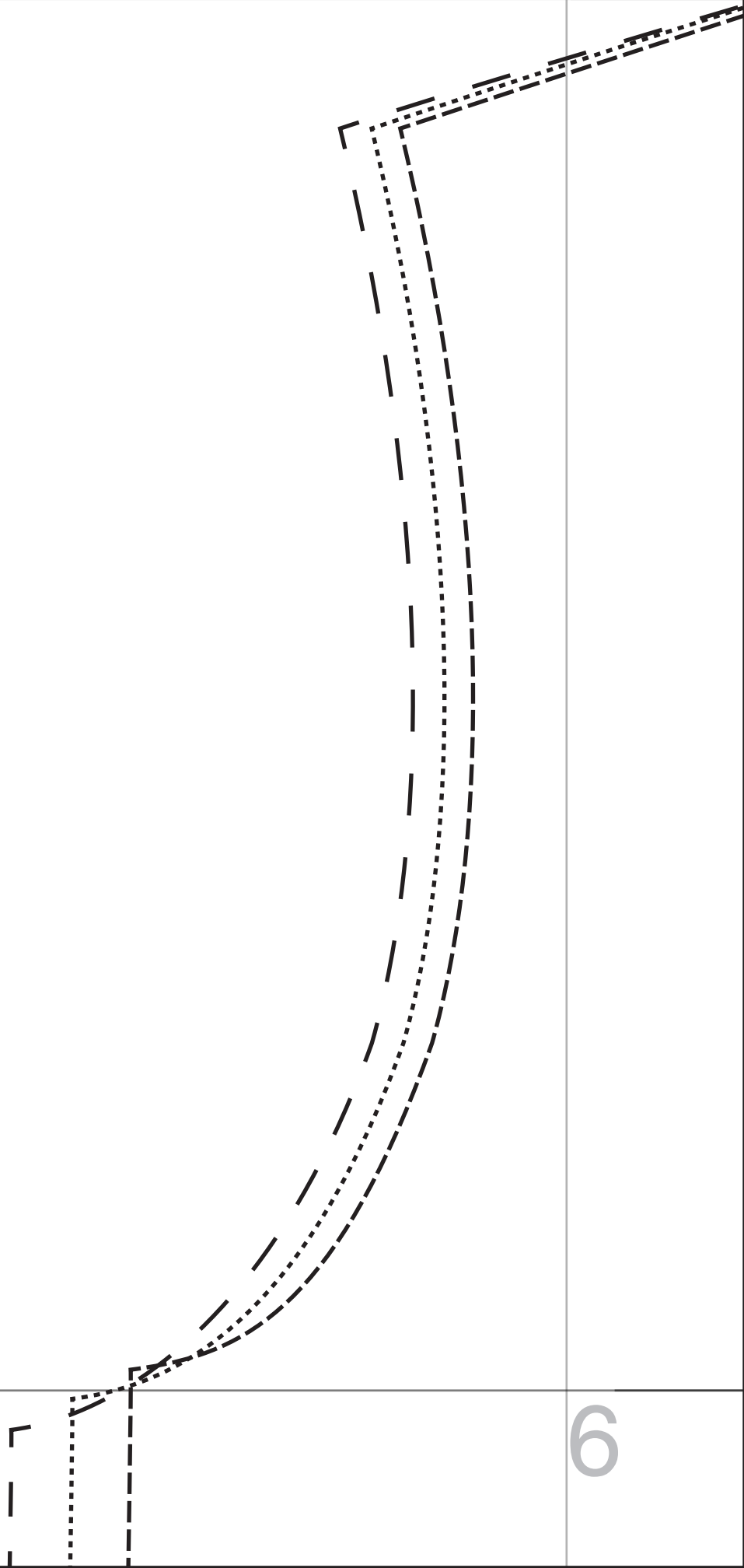


1x1  
cm

Kontrollquadrat

Bluse ZUZU

1



6

1



Kontrollquadrat

Bluse ZUZU

2

Bluse ZUZU  
Rückteil  
1x im Bruch  
zuschneiden

2

6

7

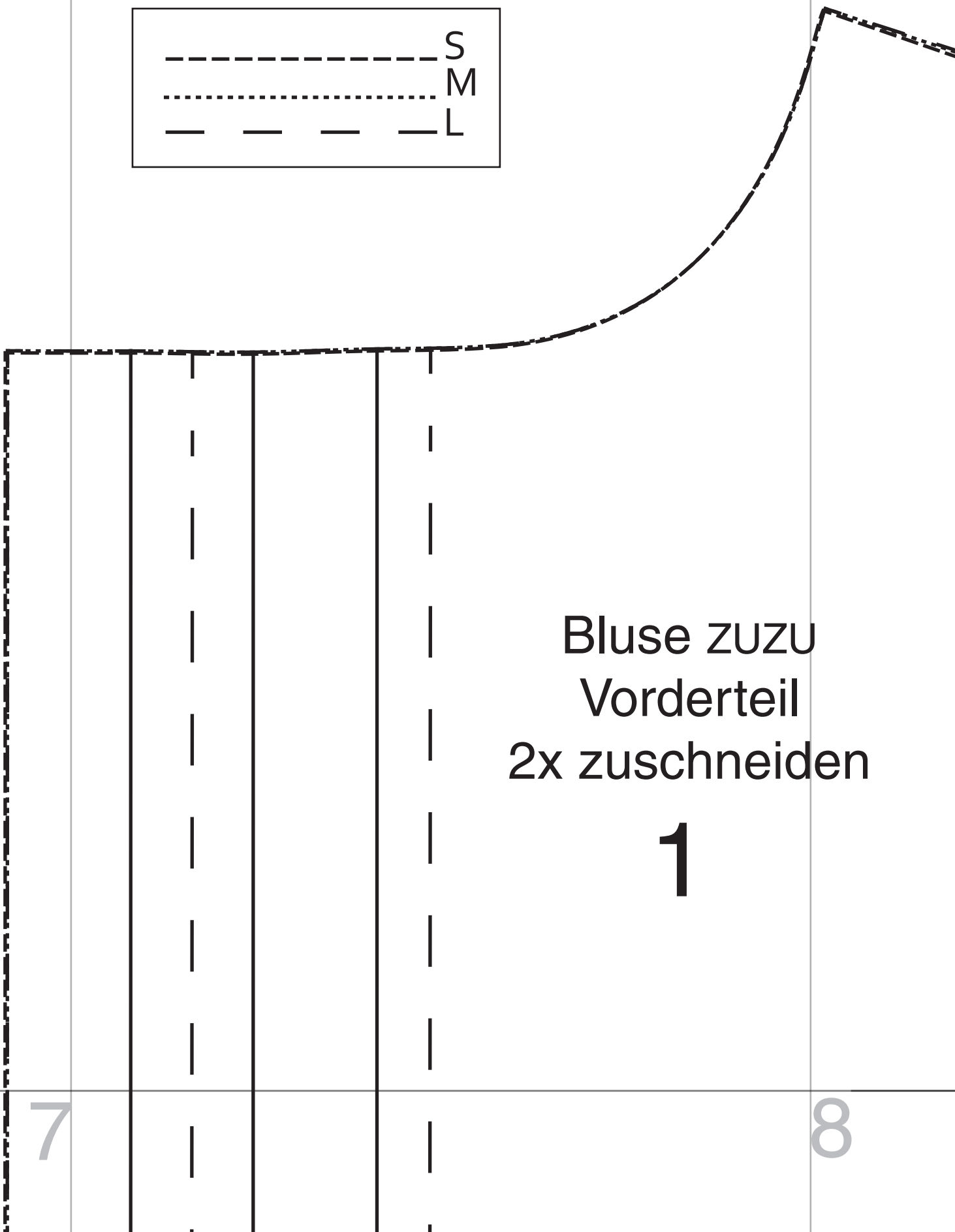
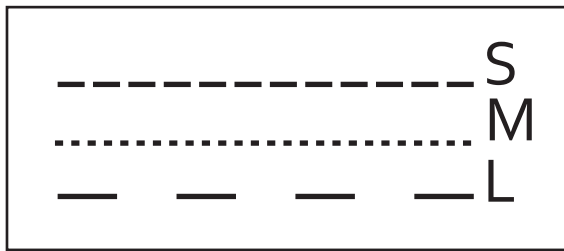
2

1x1  
cm

Kontrollquadrat

Bluse ZUZU

3



Bluse ZUZU  
 Vorderteil  
 2x zuschneiden

1

7

8

3

1x1  
cm

Kontrollquadrat

4

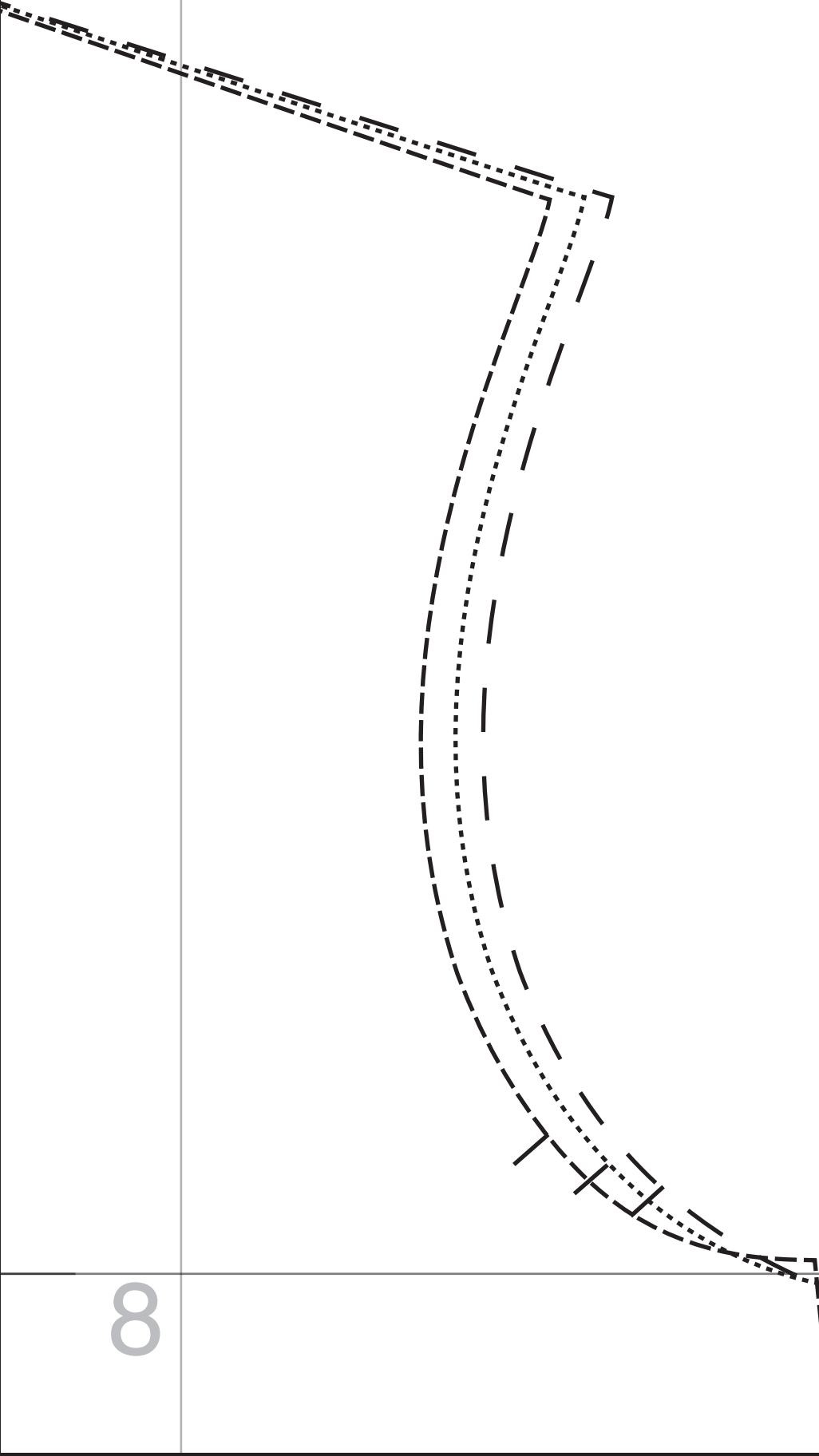
Bluse ZUZU

VM

Bluse ZUZU  
Kragensteg 2x zuschneiden

4

HM  
Bruch FDL



8

9

4

1x1  
cm

Kontrollquadrat

Bluse ZUZU

5

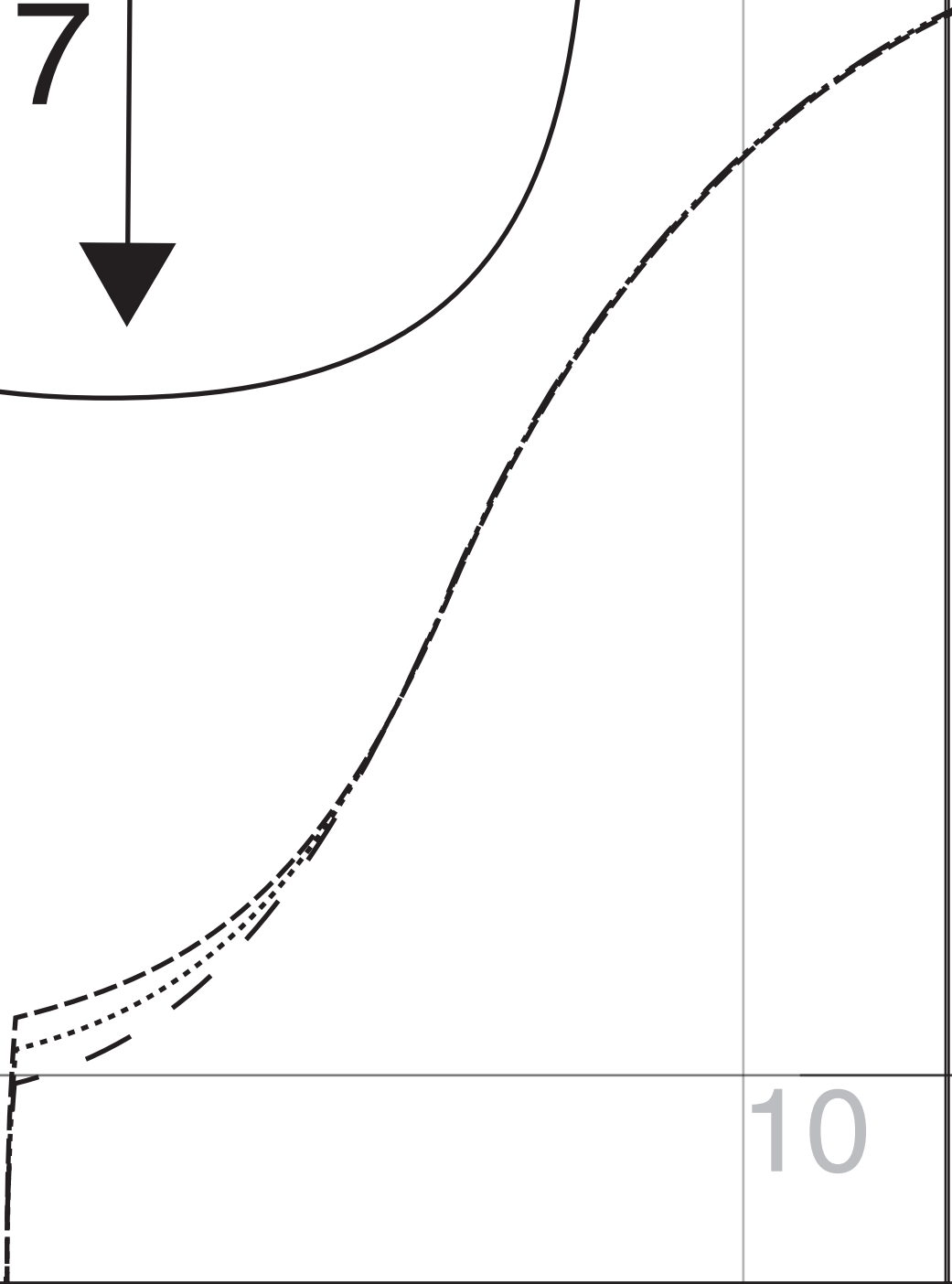
Bluse ZUZU  
aufgesetzte Tasche  
2x zuschneiden

7



9

10

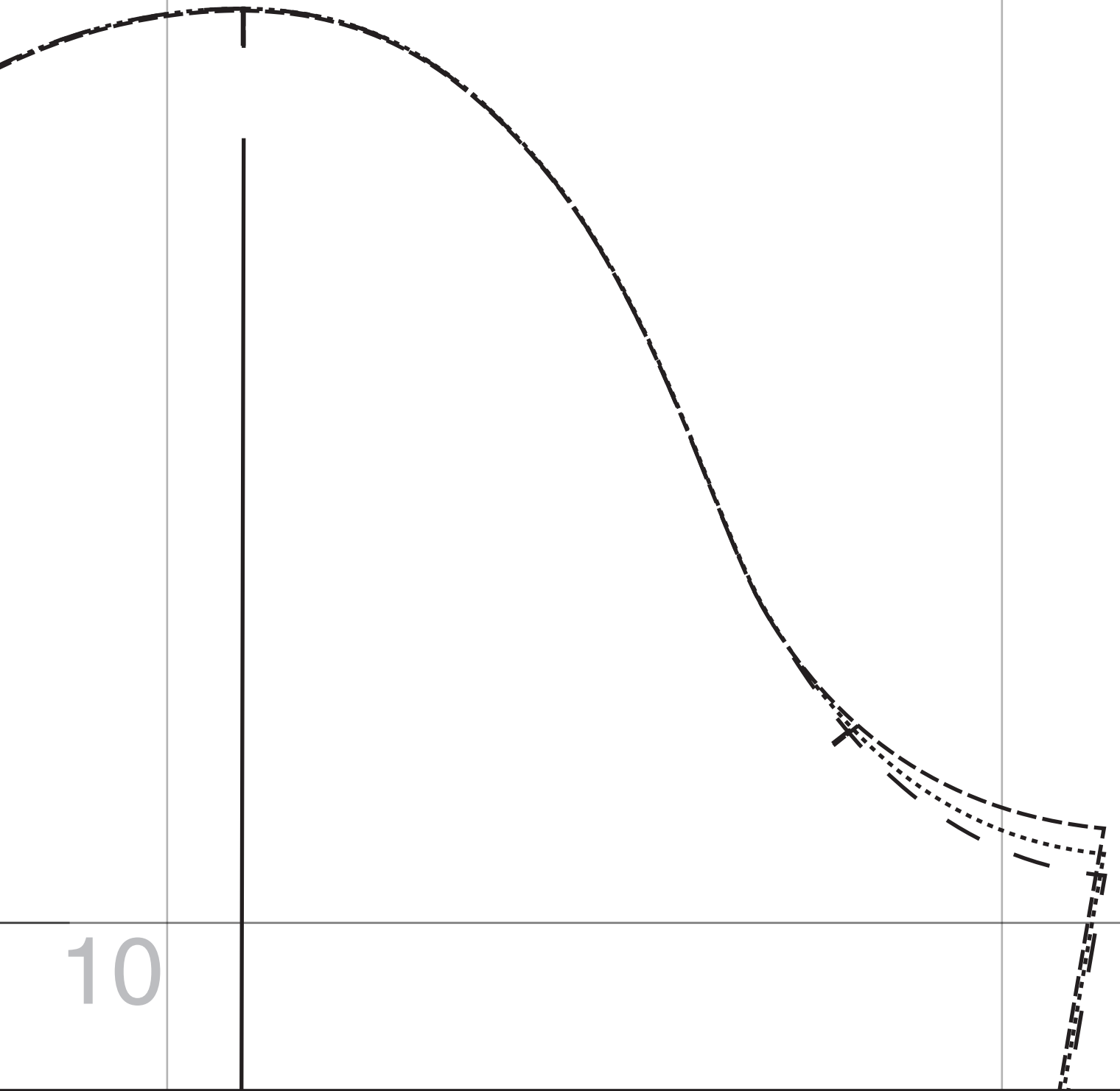


5

1x1  
cm

Kontrollquadrat

Bluse ZUZU



10

1x1  
cm

Kontrollquadrat

Bluse ZUZU

6

11

6

1x1  
cm

Kontrollquadrat

Bluse ZUZU

7

- 1 Vorderteil
- 2 Rückenteil
- 3 Ärmel
- 4 Kragensteg
- 5 Kragen
- 6 Manschette
  
- 7 Tasche

11

12



7

1x1  
cm

Kontrollquadrat

Bluse ZUZU

8

linke Seite an gestrichelter Linie abschneiden

vordere Mitte - FDL

12

13

8

1x1  
cm

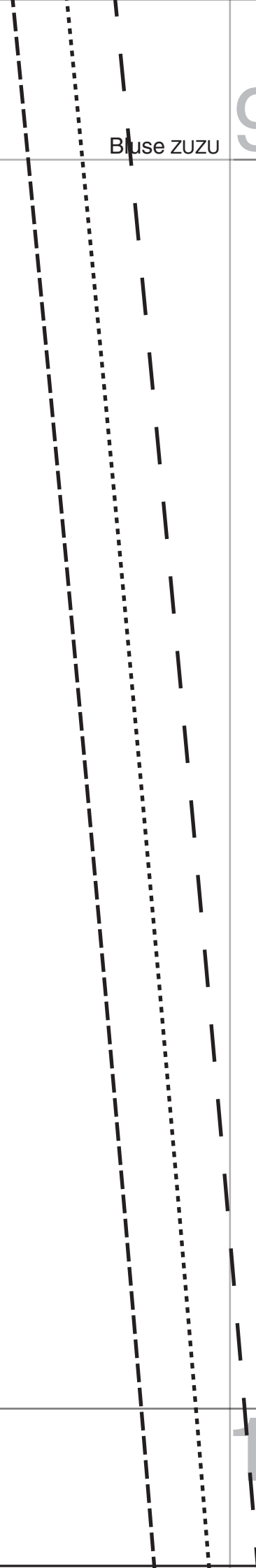
Kontrollquadrat

9

Bluse ZUZU

13

14



9

1x1  
cm

Kontrollquadrat

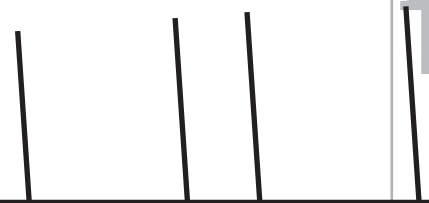
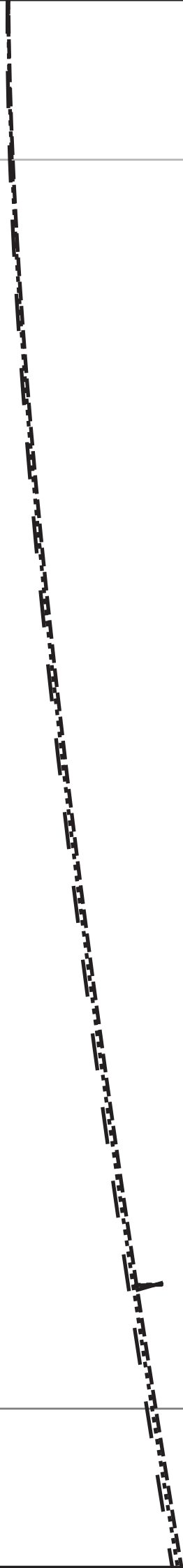
Bluse ZUZU

10

14

Falten  
in Pfeilrichtung legen

15



10

1x1  
cm

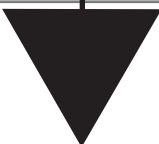
Kontrollquadrat

Bluse ZUZU

Bluse ZUZU  
Ärmel  
2x zuschneiden  
**3**

1

15



1x1  
cm

Kontrollquadrat

Bluse ZUZU

11

Schlitz I

16

11



Kontrollquadrat

Bluse ZUZU

12

16

17

12

1x1  
cm

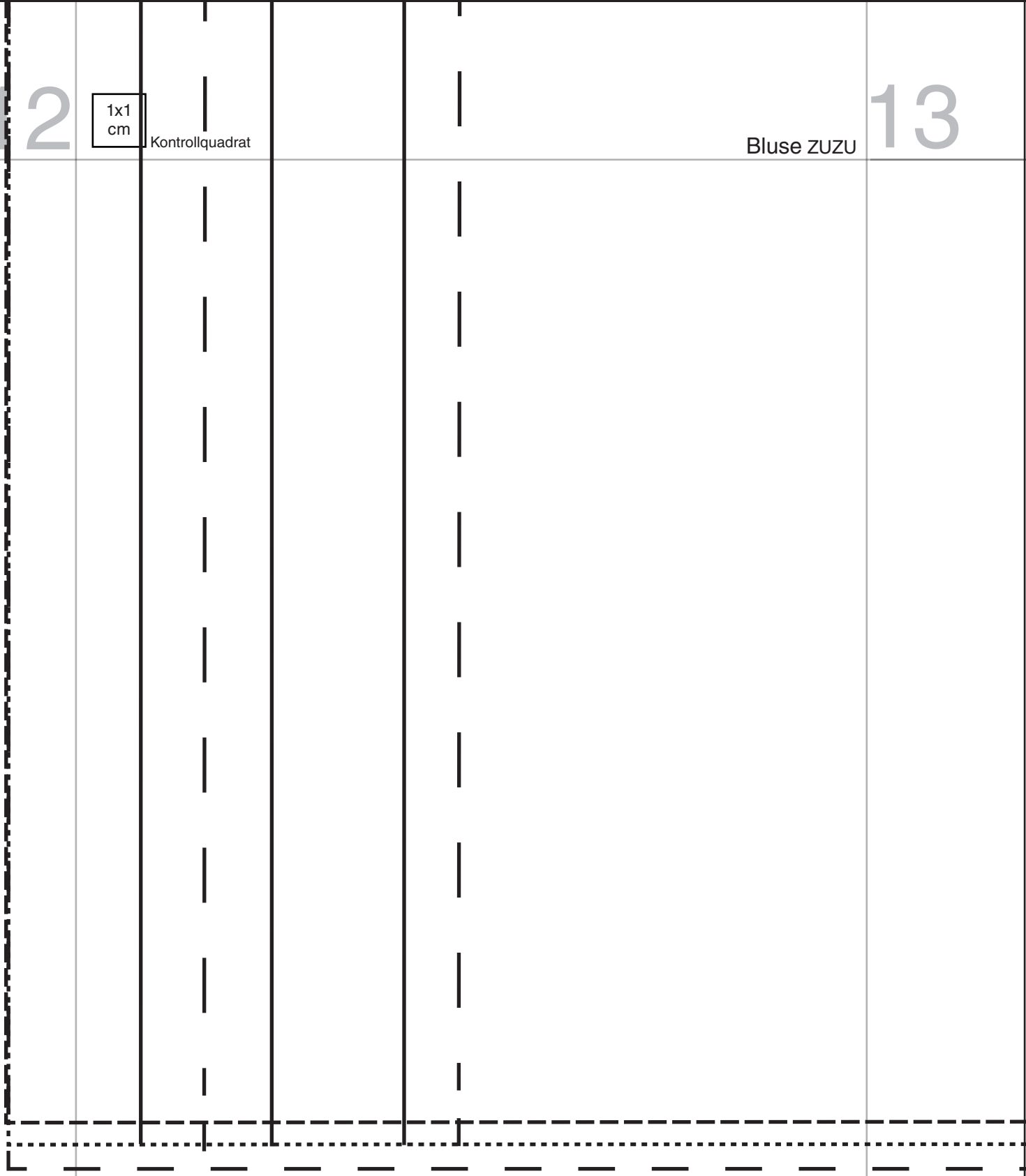
Kontrollquadrat

Bluse ZUZU

13

17

18



13

1x1  
cm

Kontrollquadrat

Bluse ZUZU

14

Schlitz

18

19



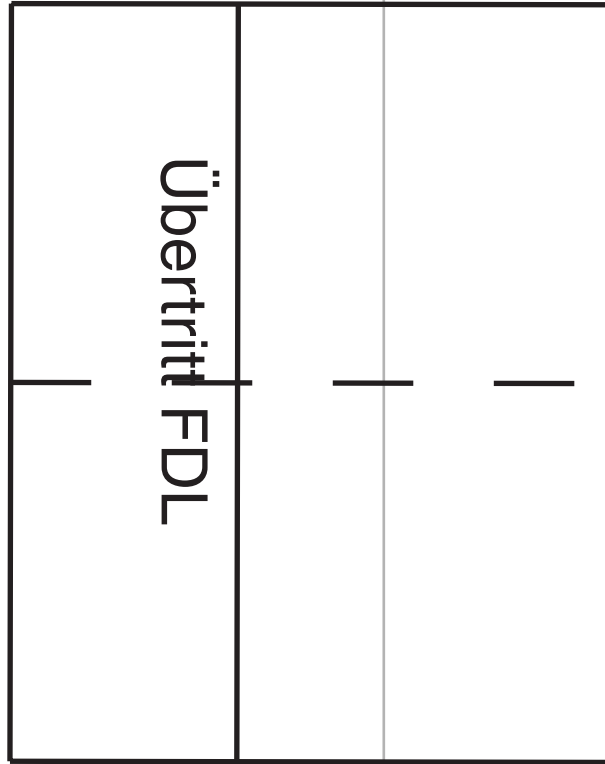
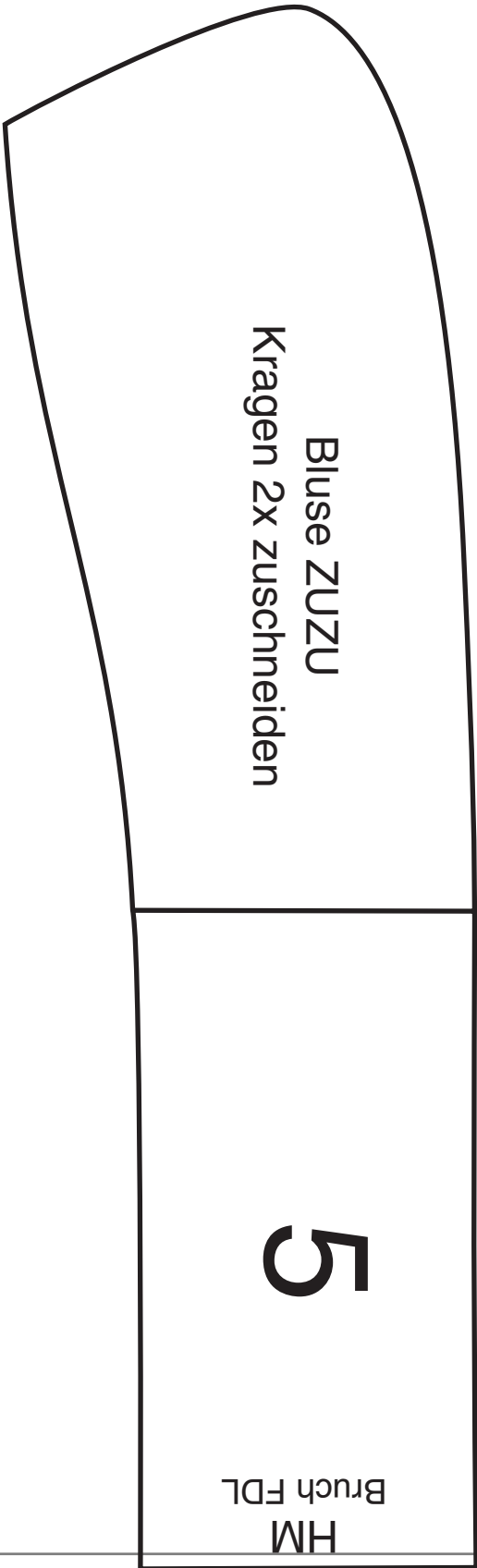
14

1x1  
cm

Kontrollquadrat

15

Bluse ZUZU



19

20

15

1x1  
cm

Kontrollquadrat

Bluse ZUZU

Bluse ZUZU  
Manschette 2x zuschneiden

Umbruchlinie

6

20