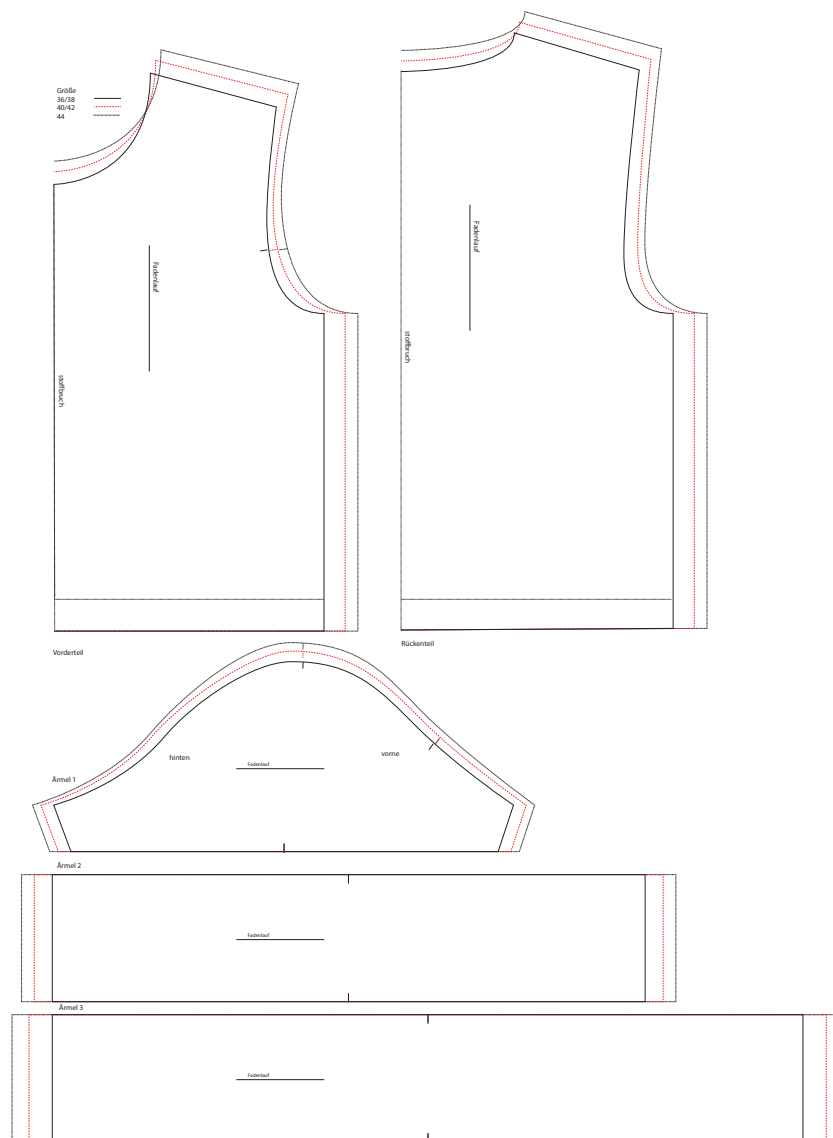
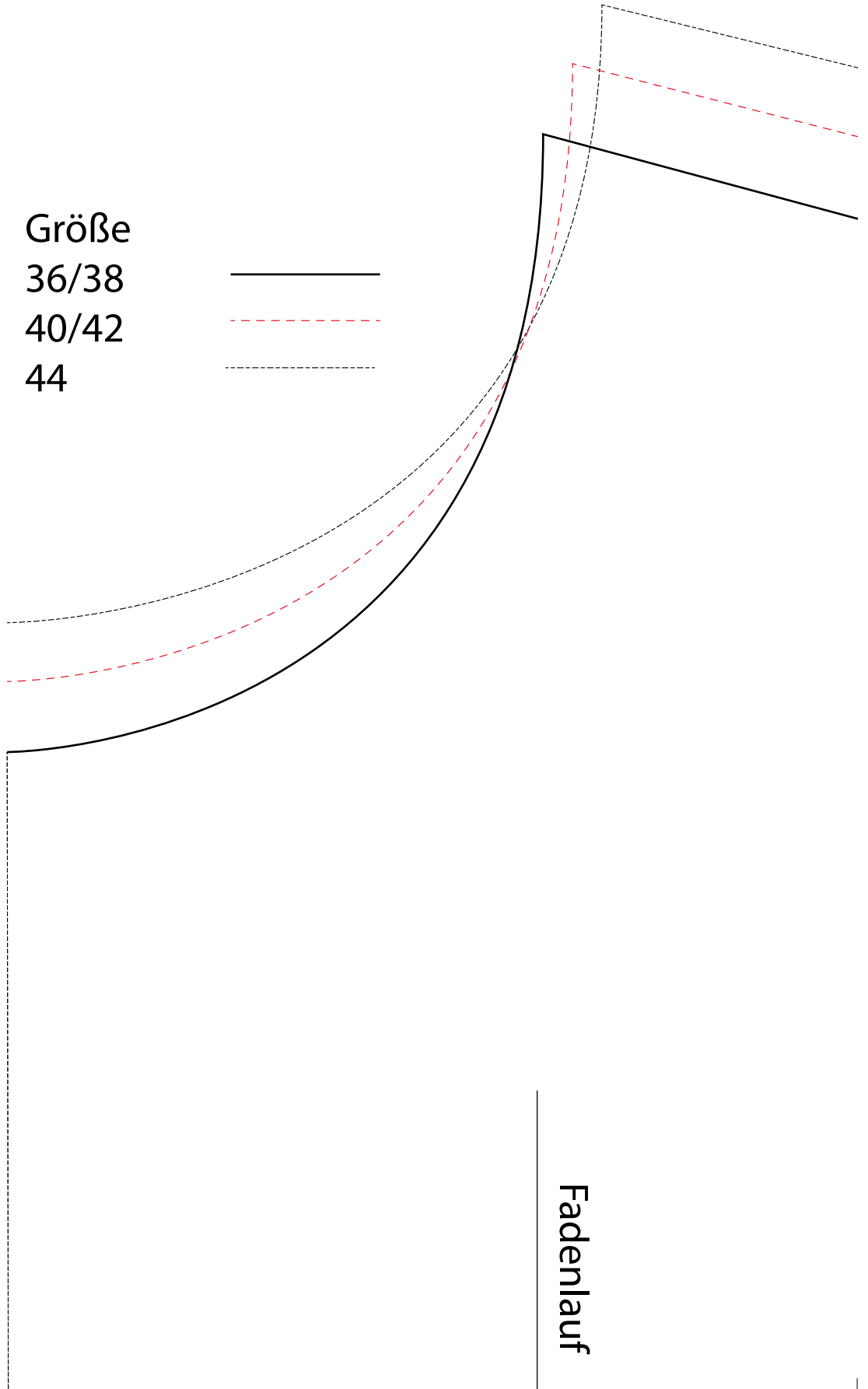
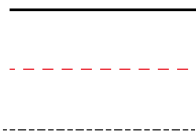


Drucken Sie die Schnittmusterseiten auf DIN A4 Papier aus. Achten Sie dabei darauf, dass das Druckergebnis in den Druckereinstellung nicht skaliert wird. Das Kontrollkästchen sollte genau 1 cm auf allen Seiten betragen.

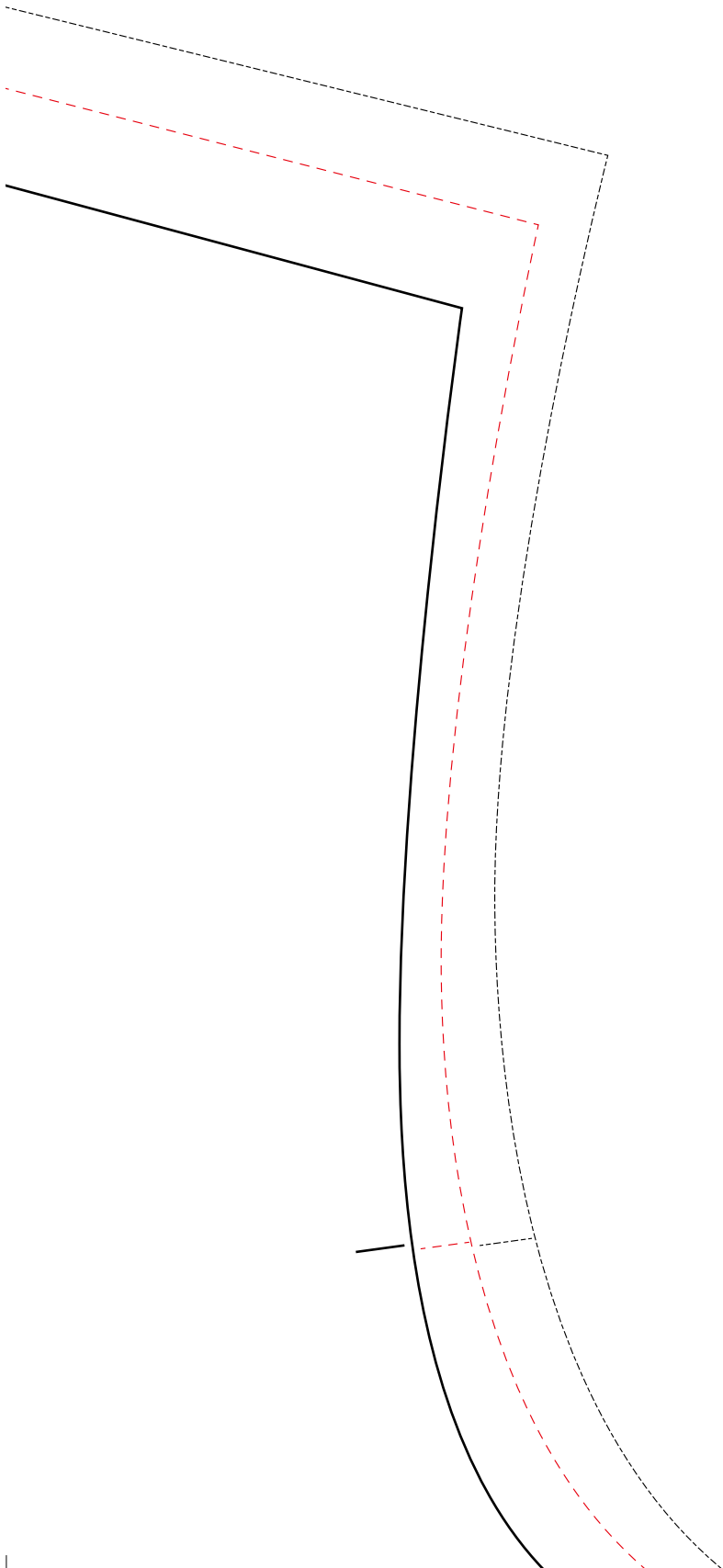


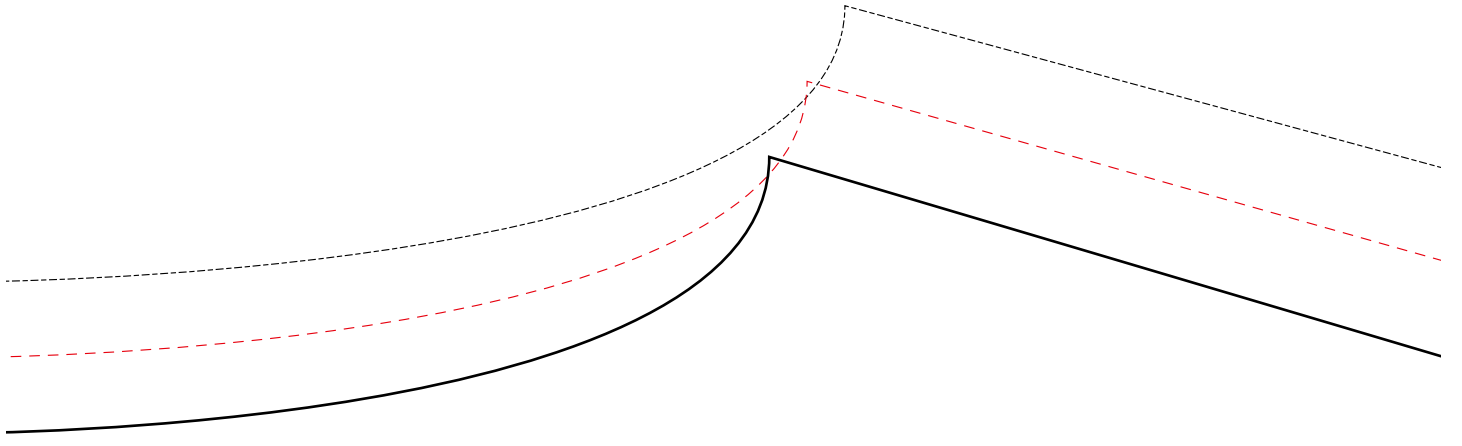
1cm

Größe  
36/38  
40/42  
44

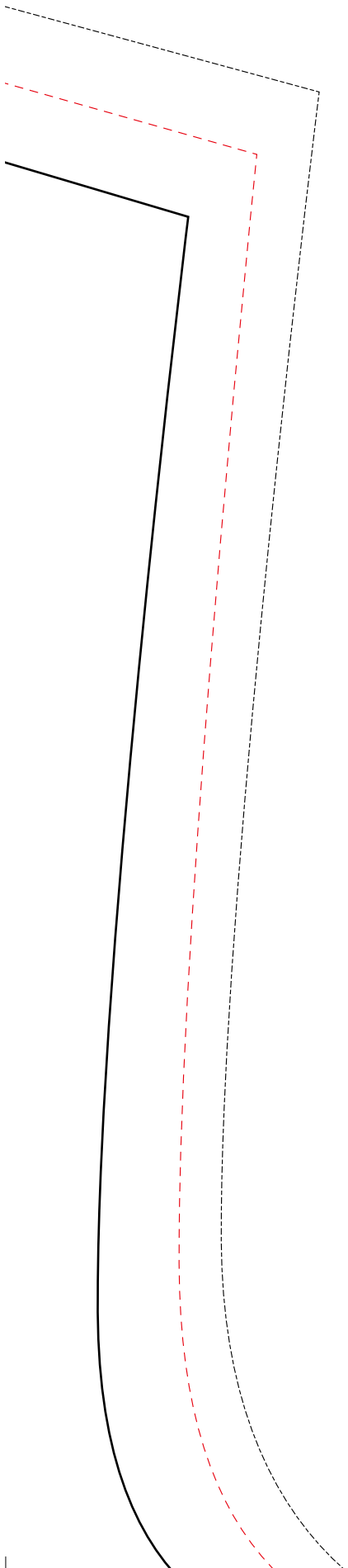


Fadenlauf





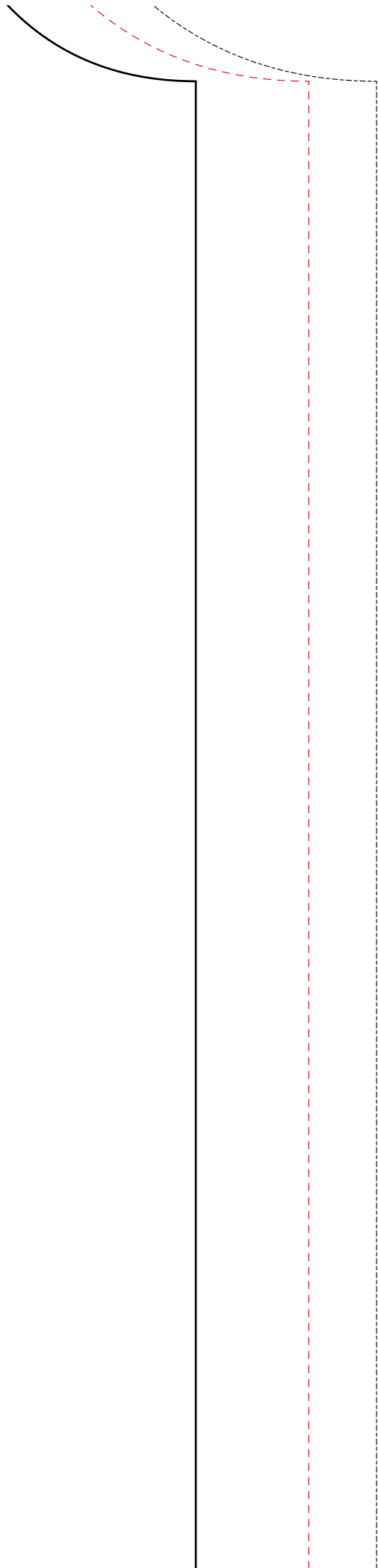
Fadenlauf





stoffbruch



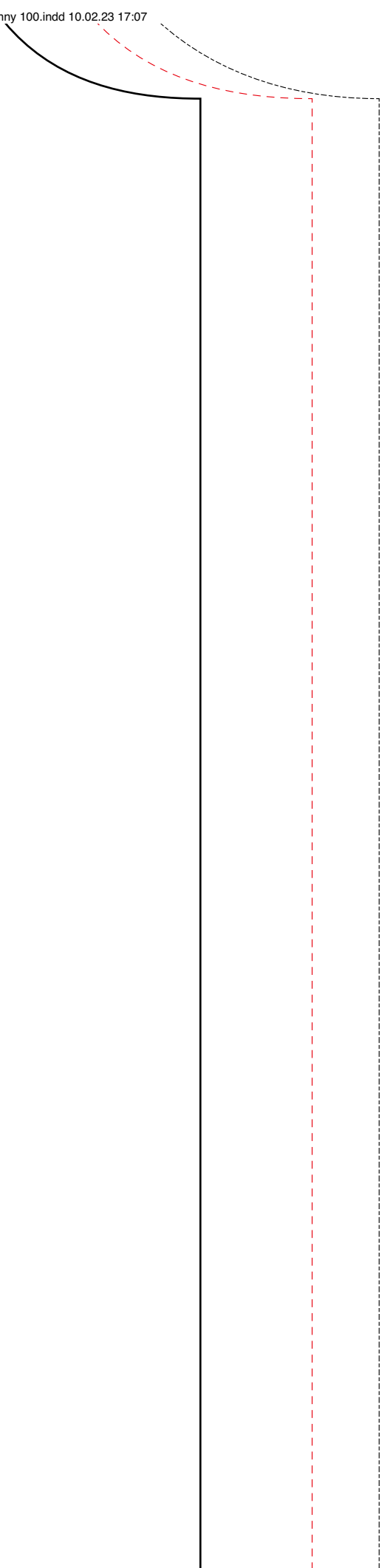


אמורחורו



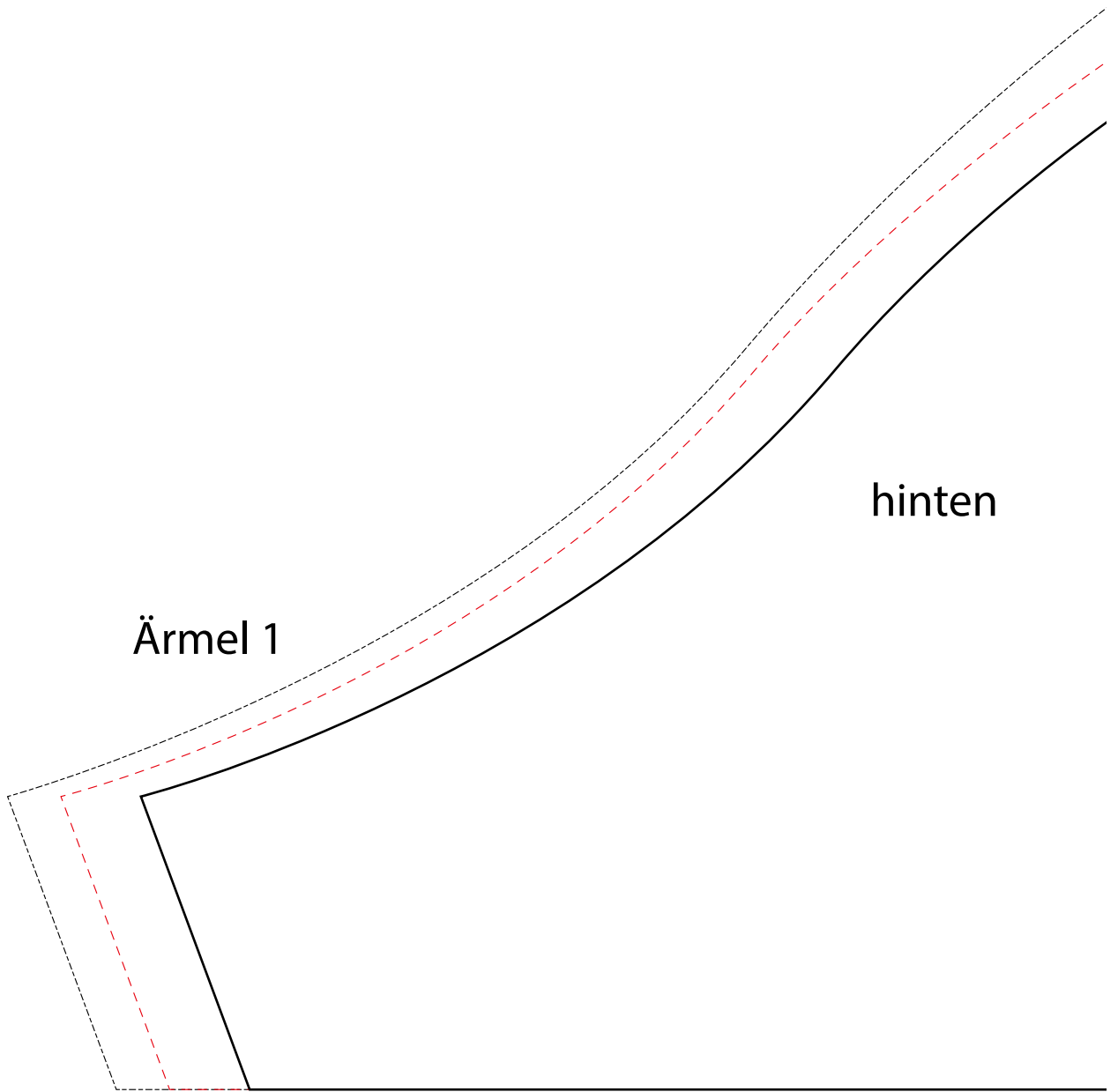
ctnffhnrh







# Vorderteil

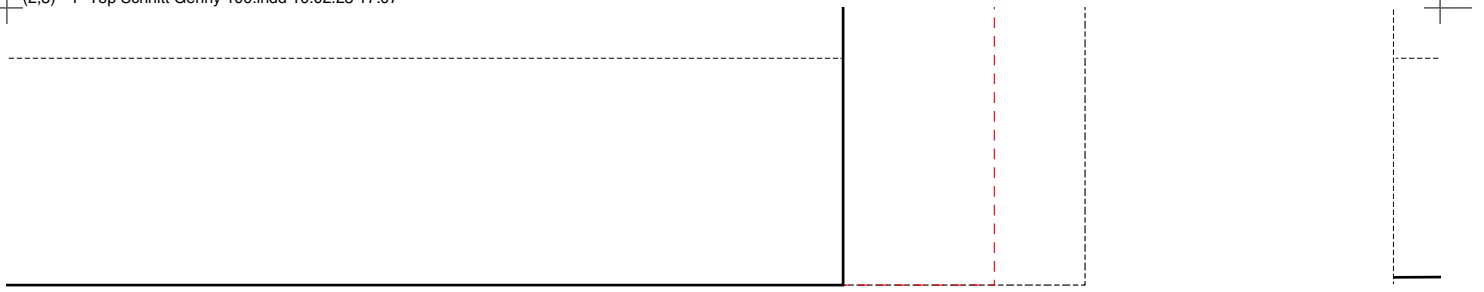


Ärmel 1

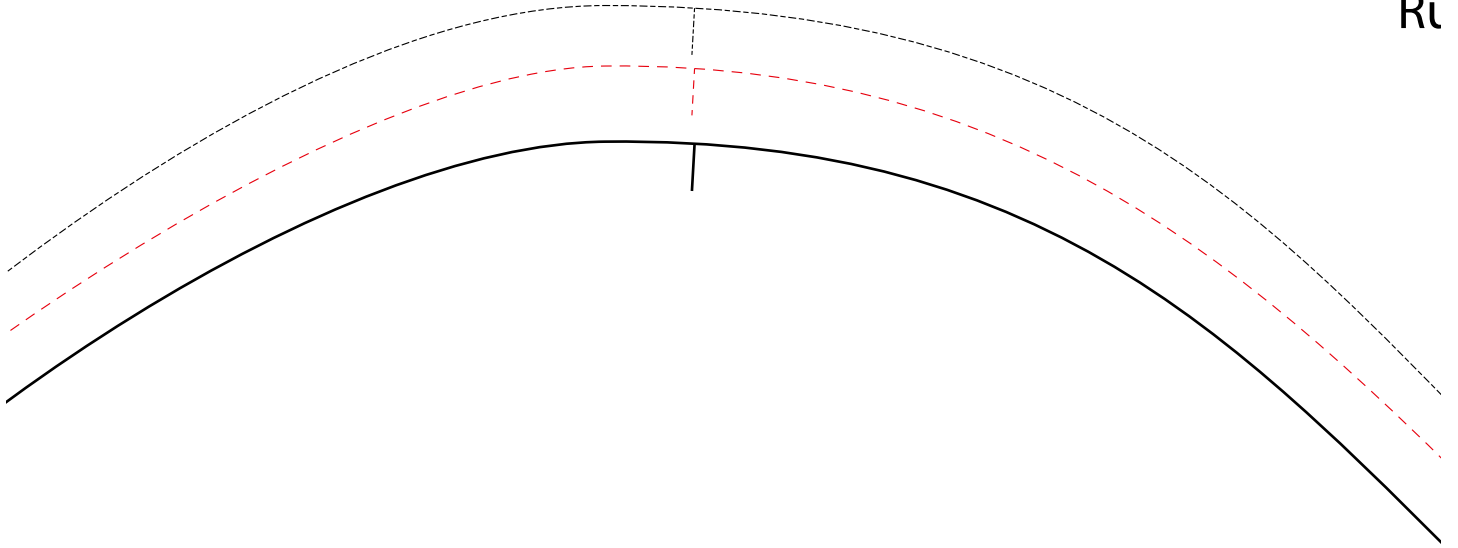
hinten

Ärmel 2



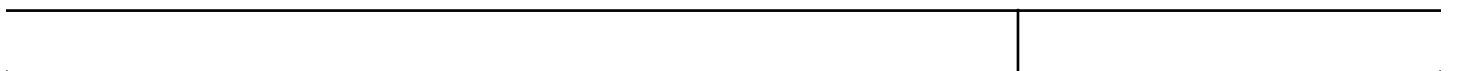
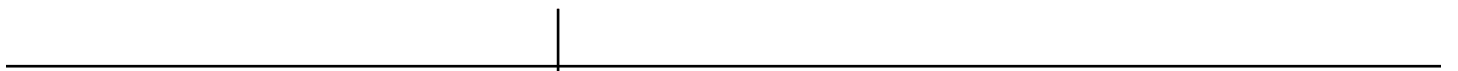


Ri

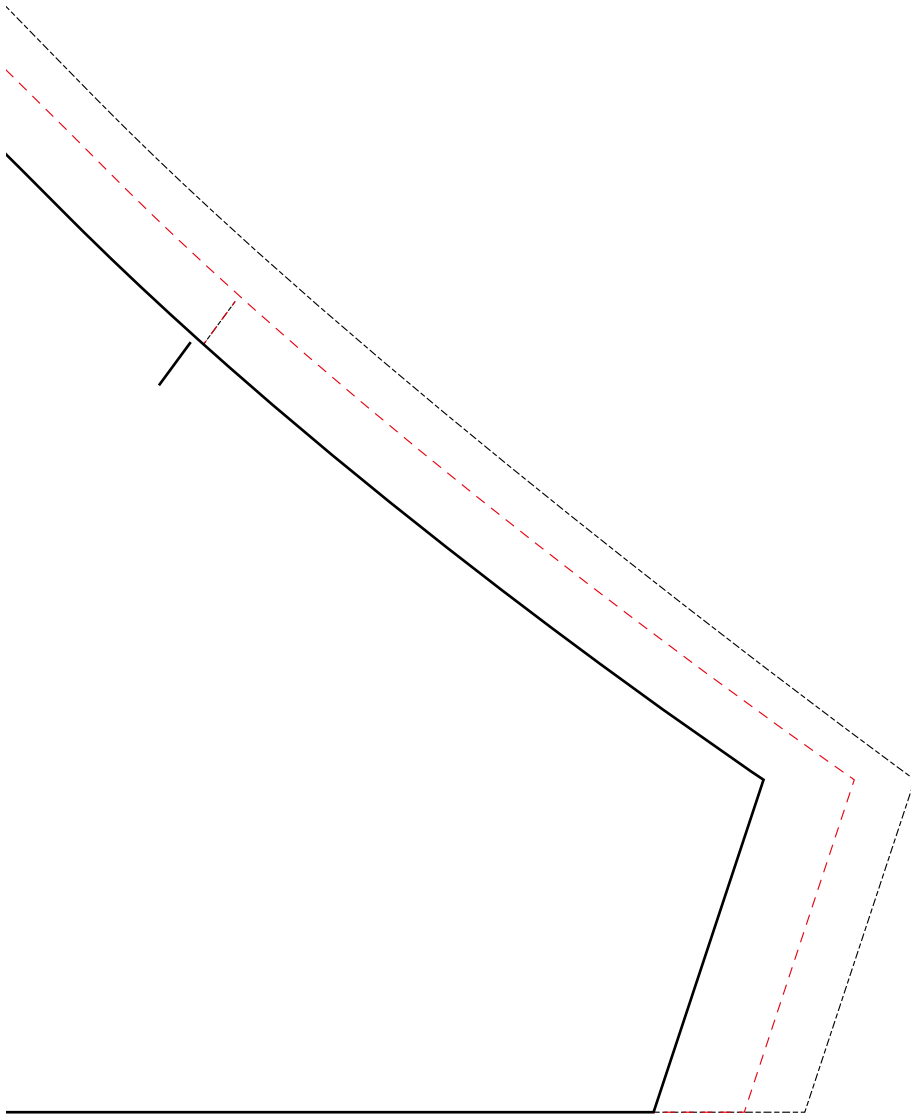


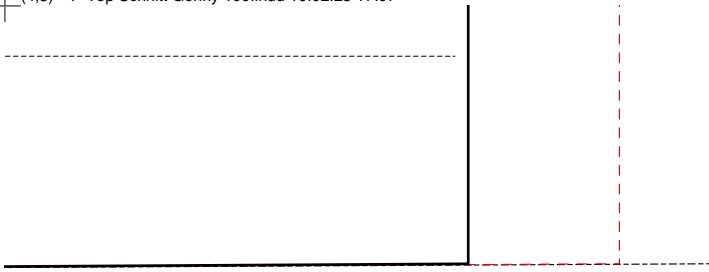
vorne

Fadenlauf



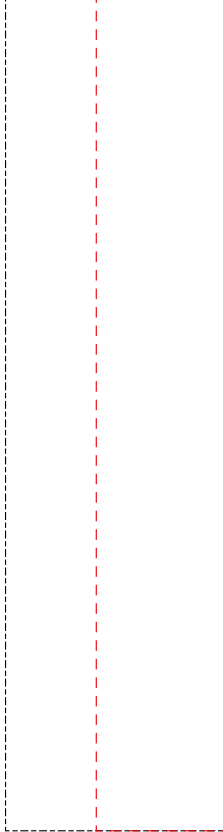
# ickenteil



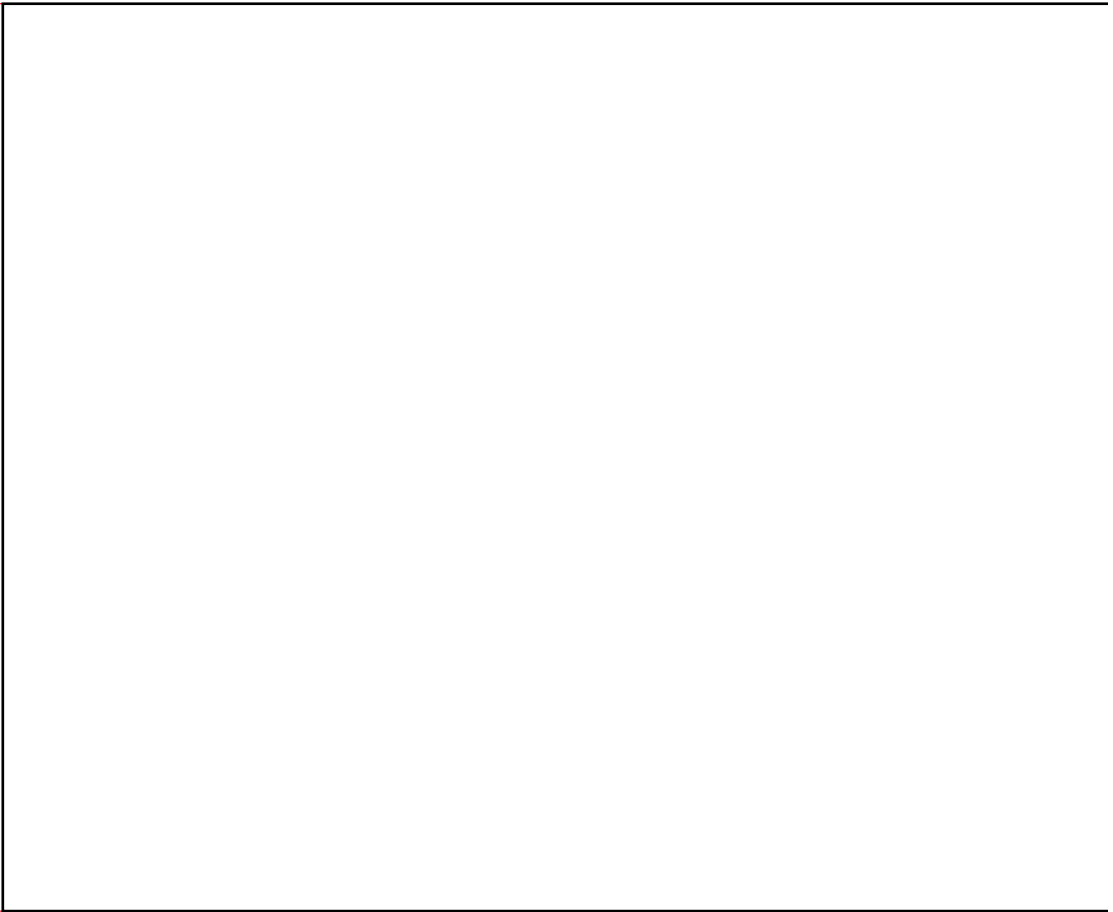
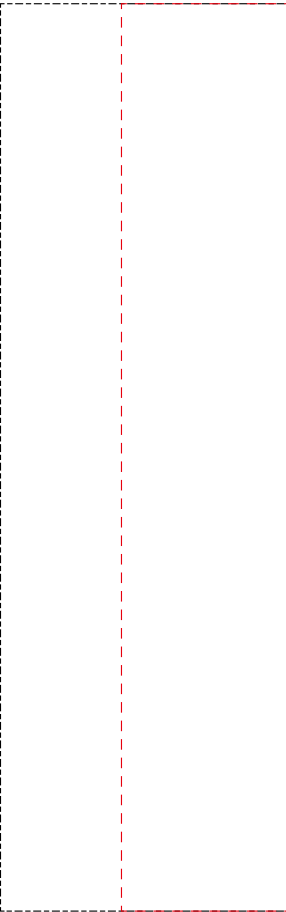






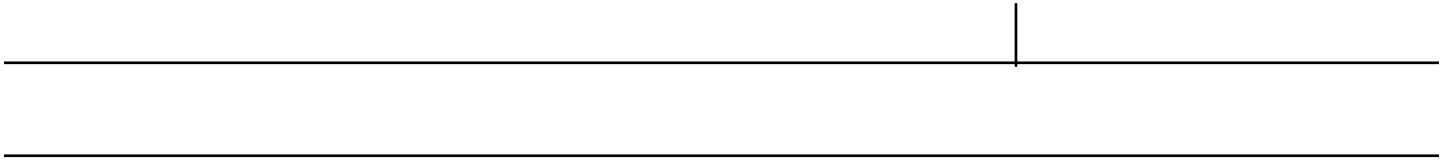
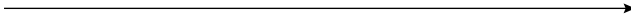


Ärmel 3





Fadenlauf



Fadenlauf



