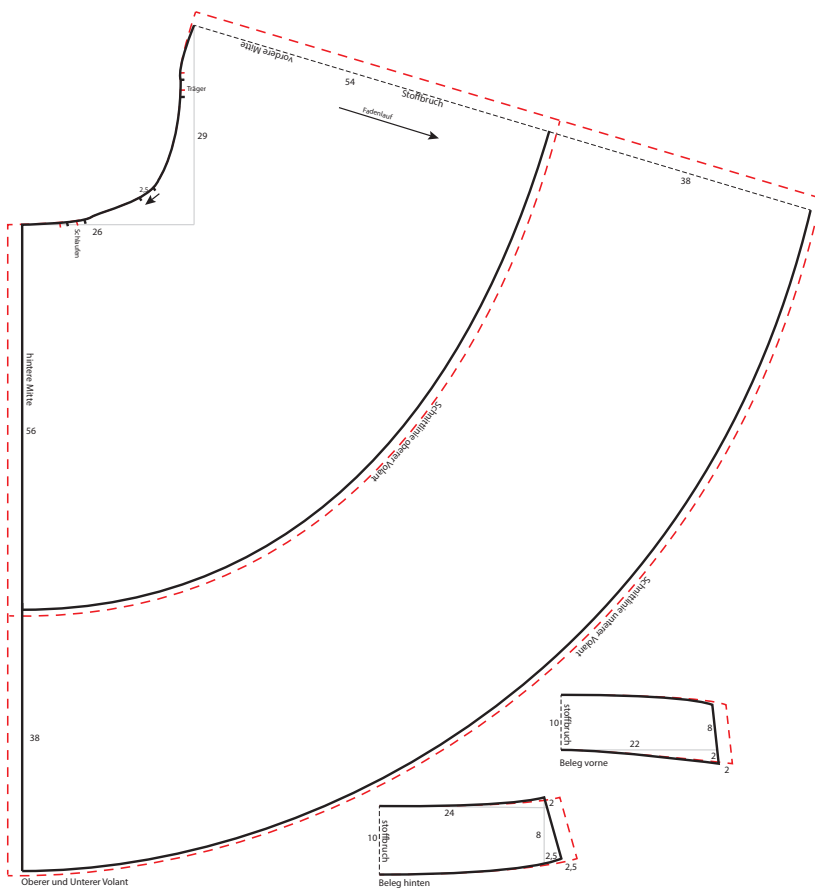


Volantkleid

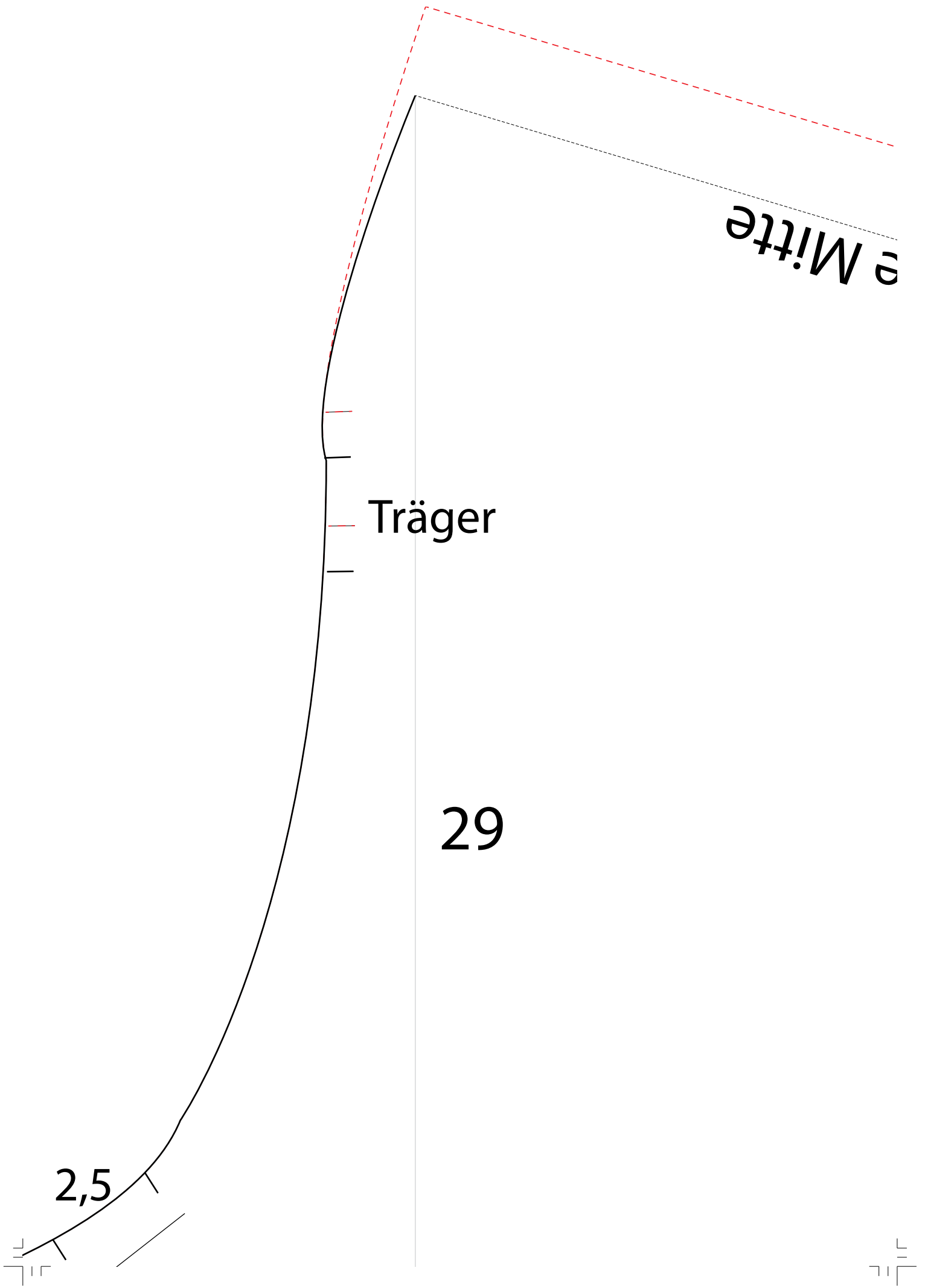
Kollektion N°9

Größe 36/38 und 40/42 (gestrichelte Linie)

Drucken Sie die Schnittmusterseiten auf DIN A4 Papier aus. Achten Sie dabei darauf, dass das Druckergebnis in den Druckereinstellung nicht skaliert wird. Das Kontrollkästchen sollte genau 1 cm auf allen Seiten betragen.







e Mitte

Träger

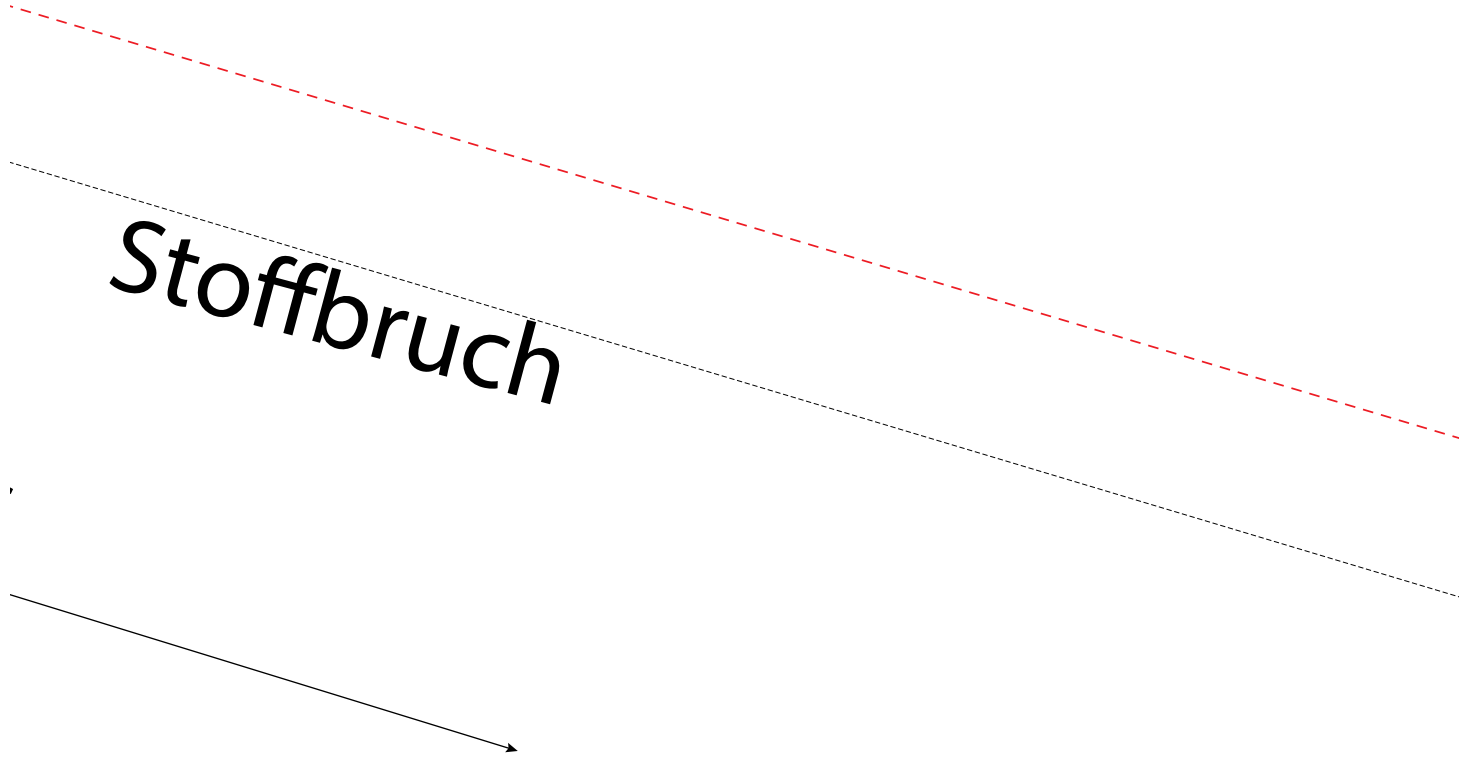
29

2,5

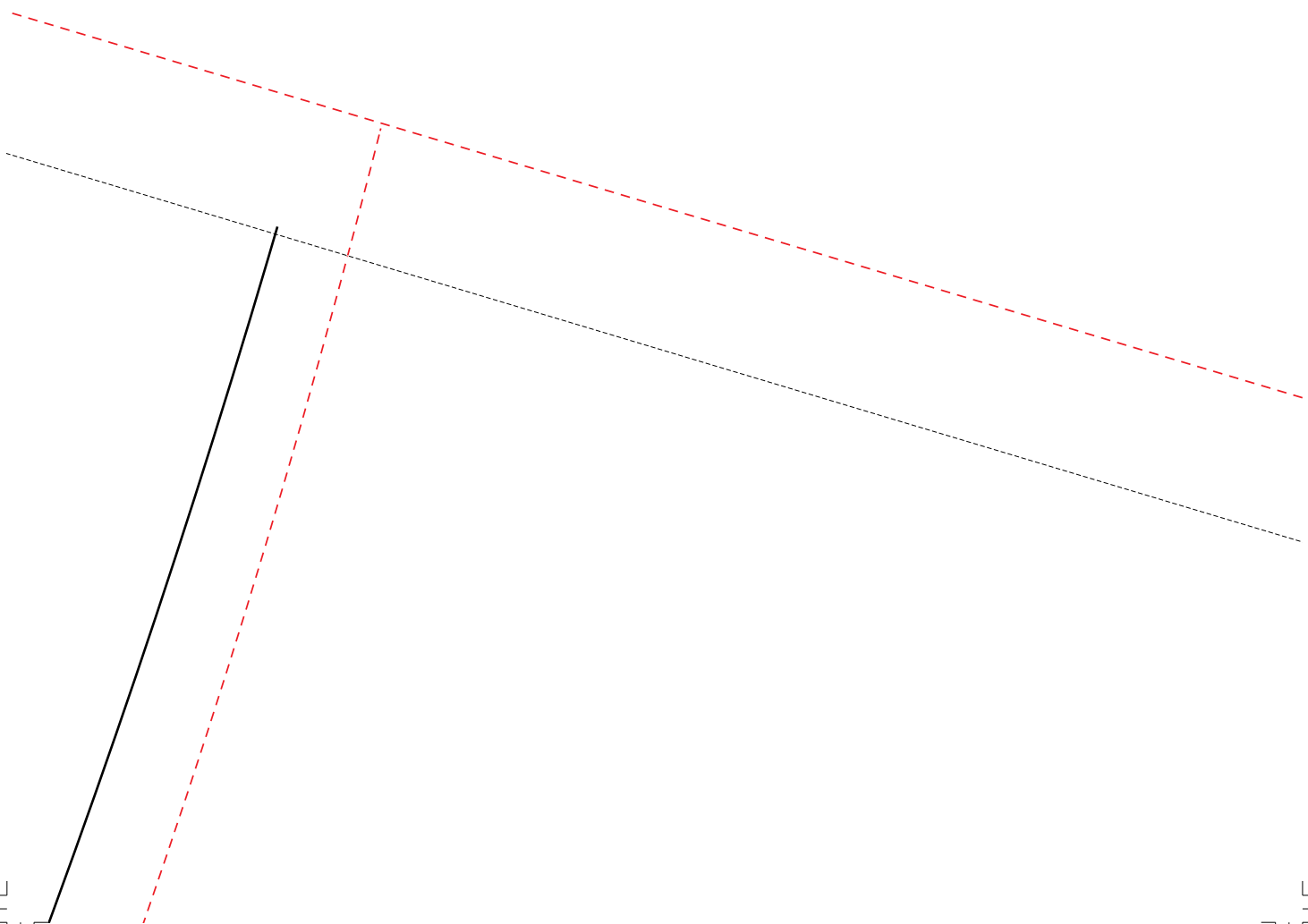
Vordere

54

Fadenlauf



Stoffbruch





38

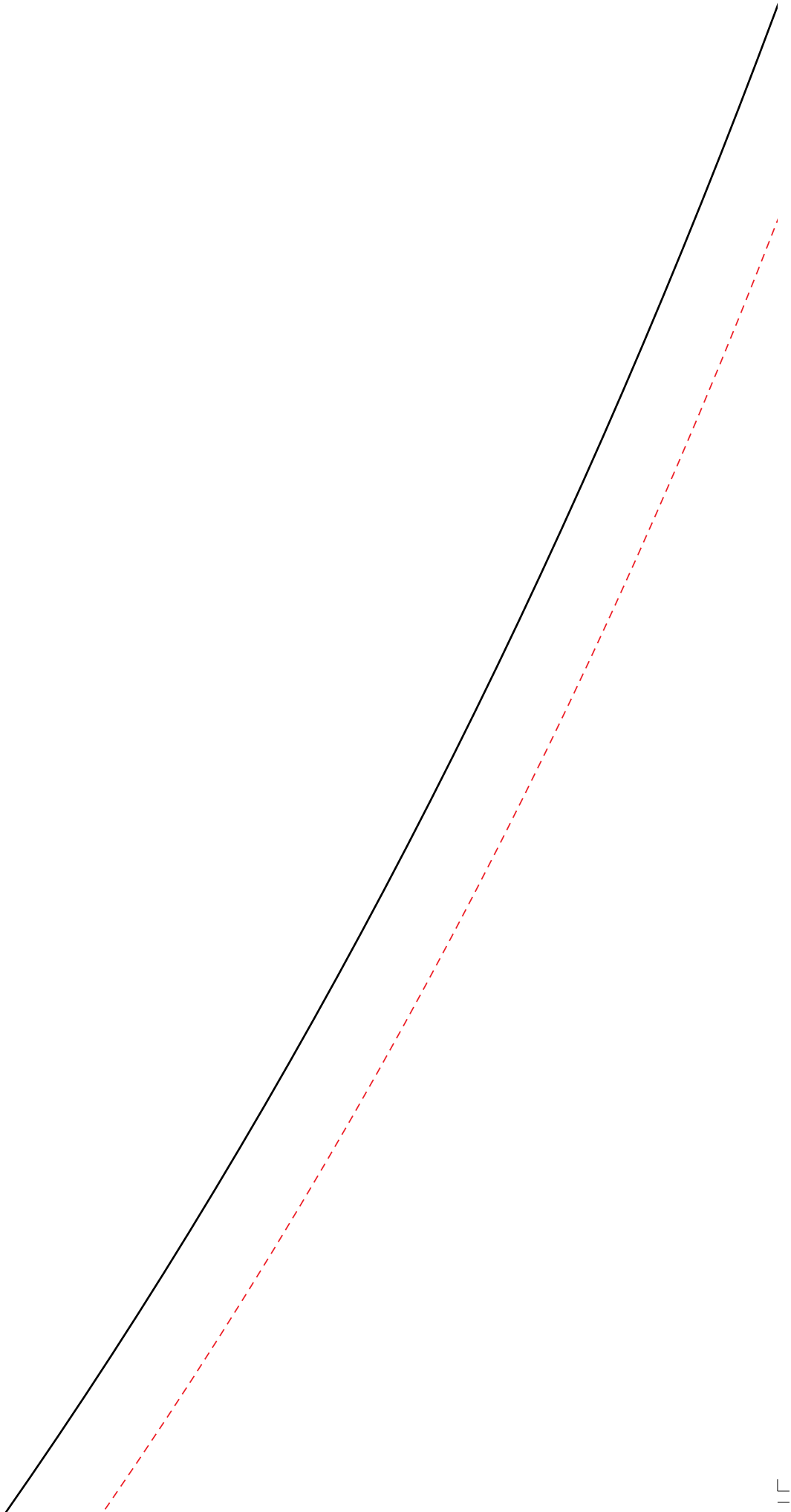
26

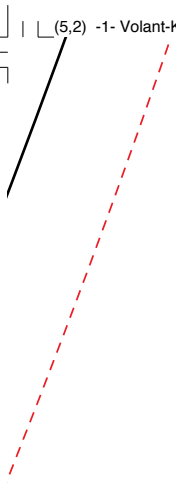
Schlaufen

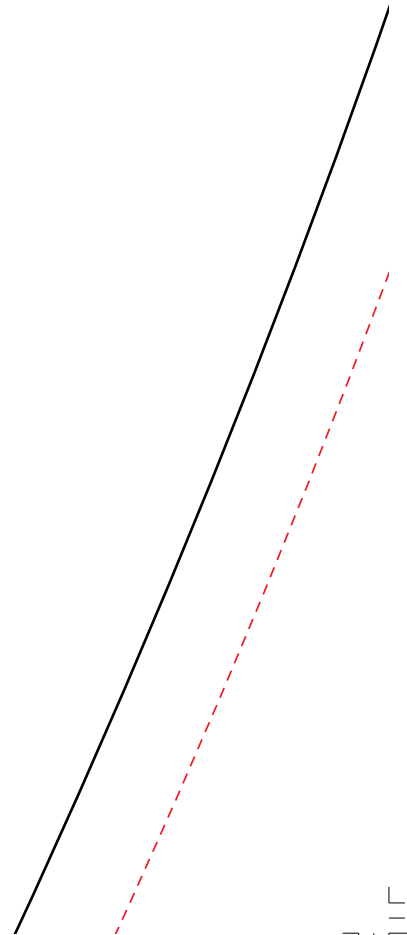
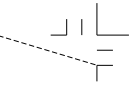
hintere M

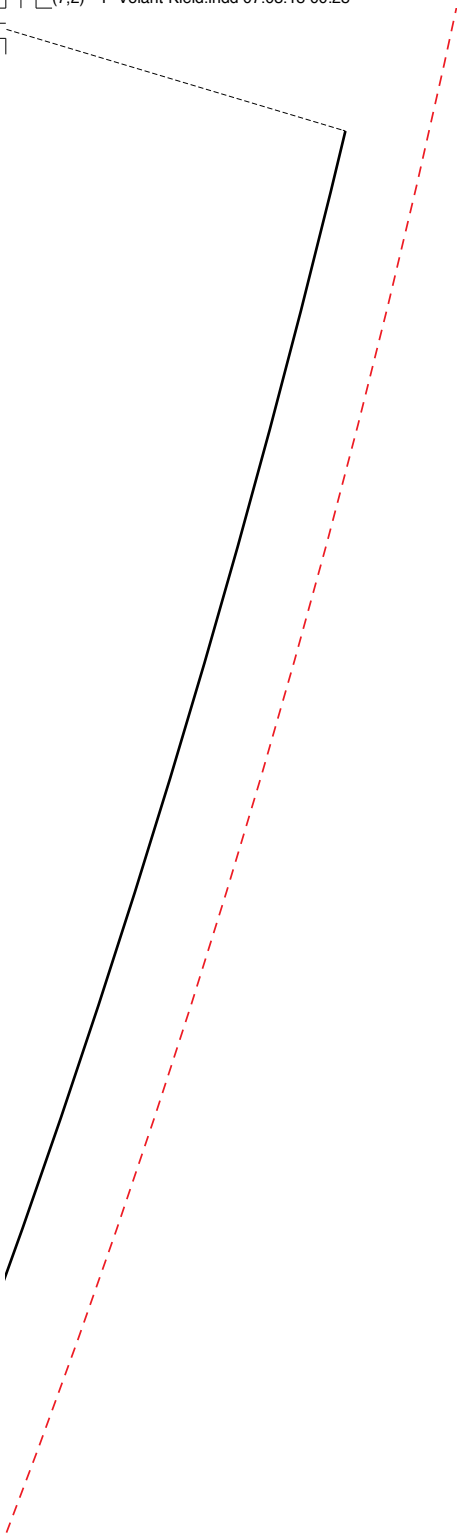






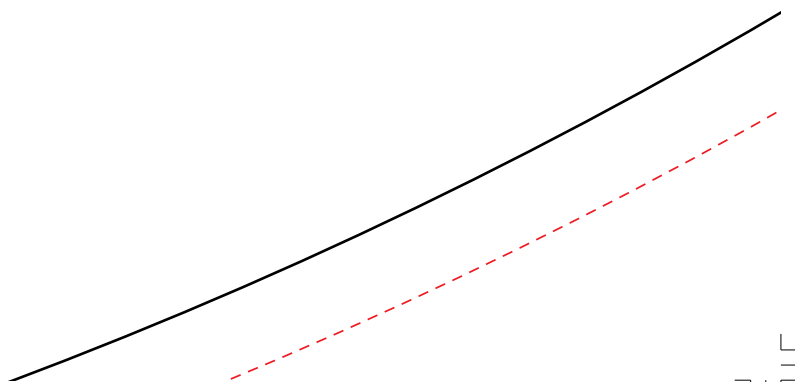


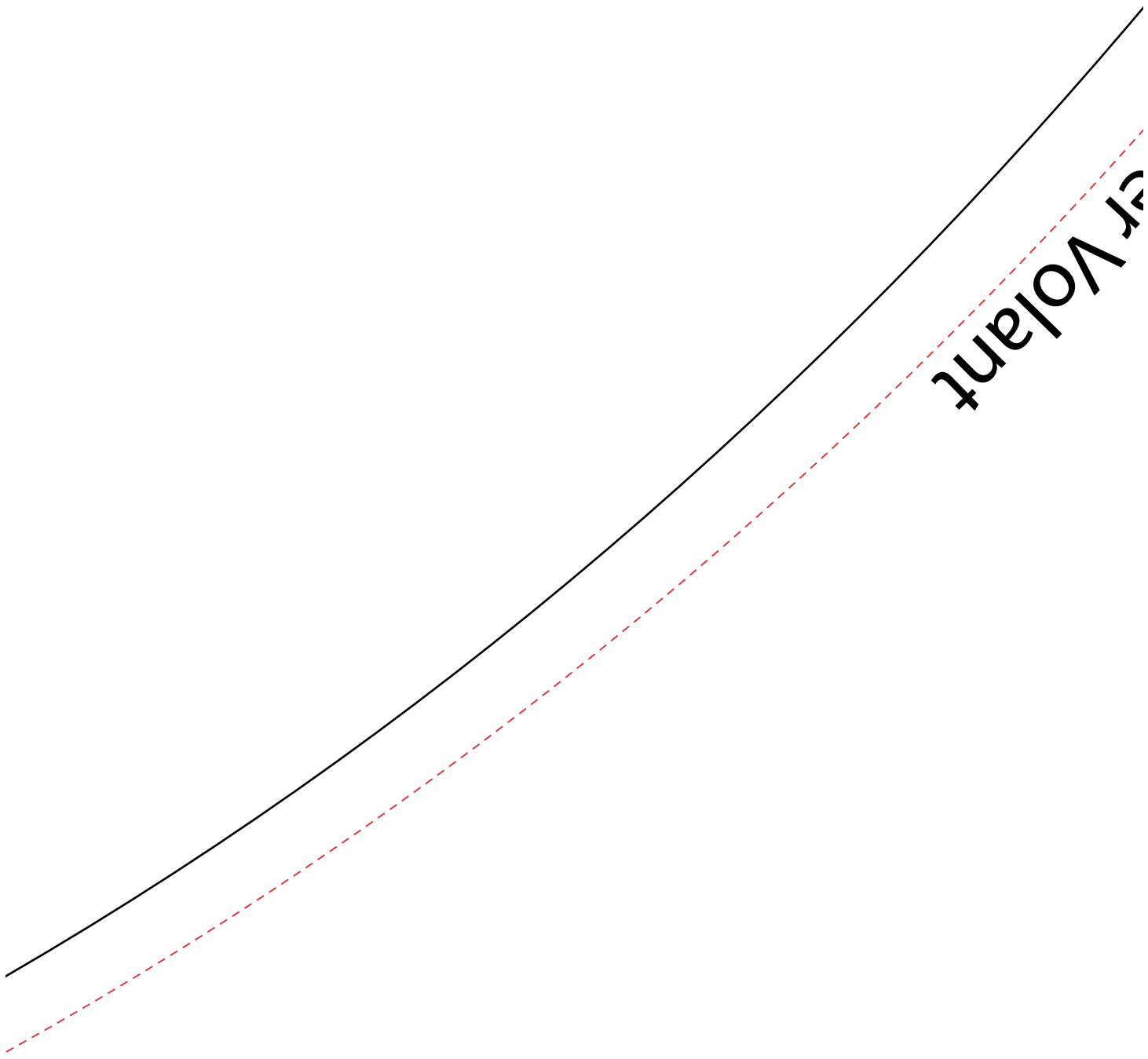




Mitte

56

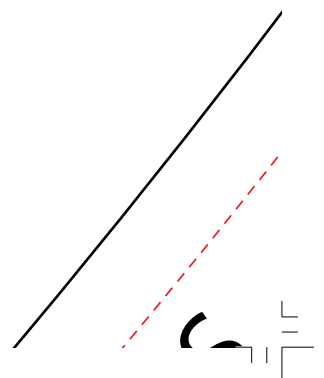


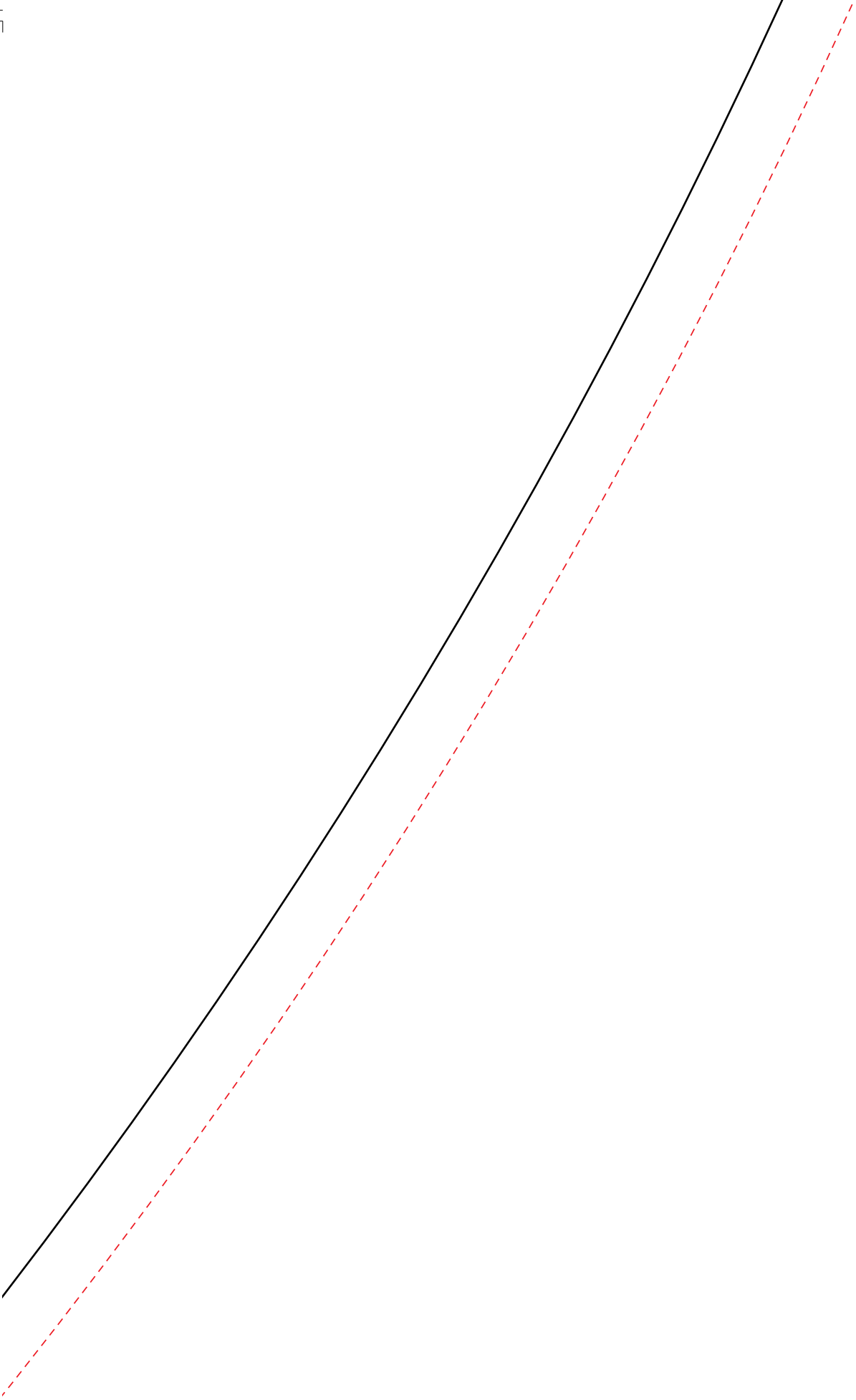
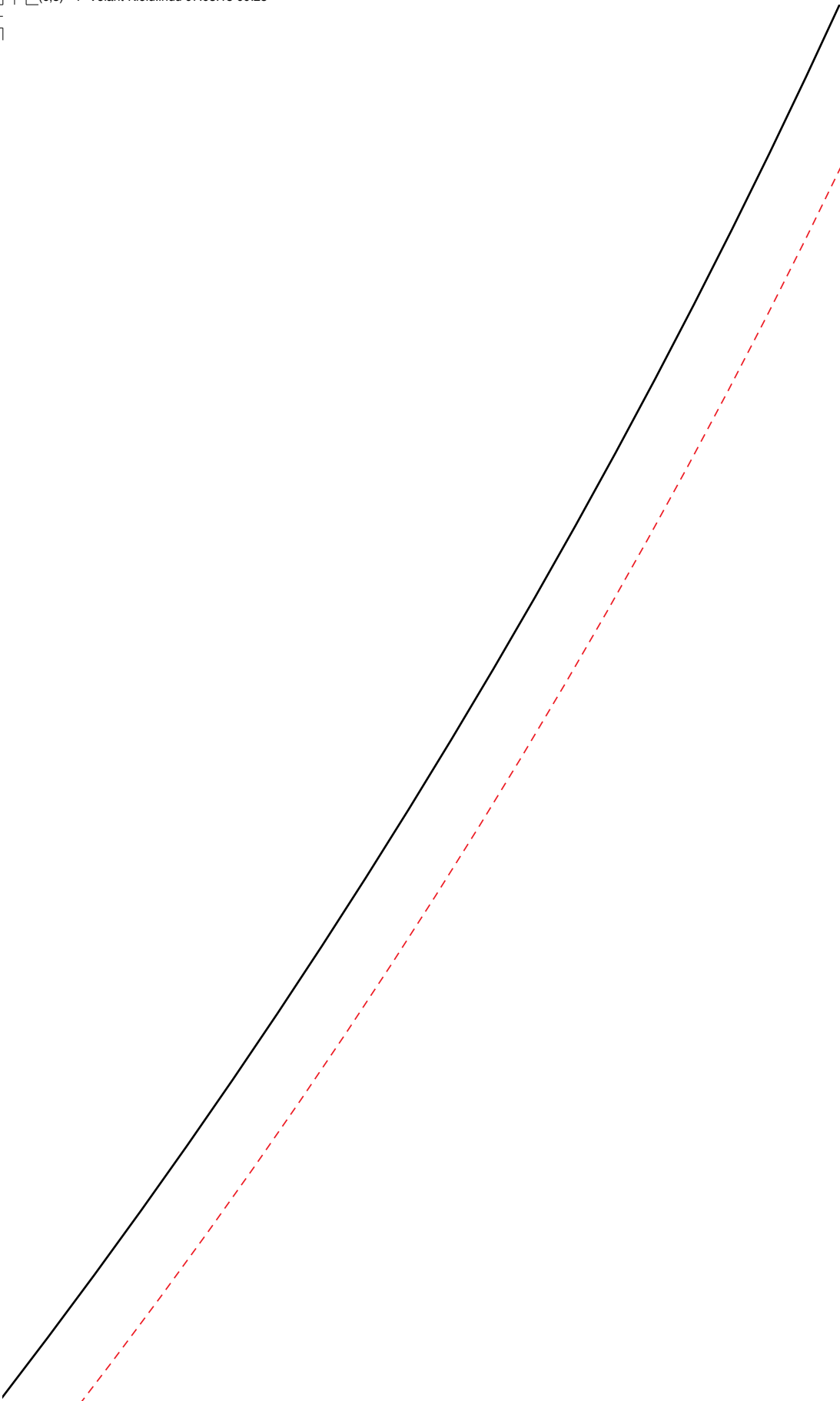




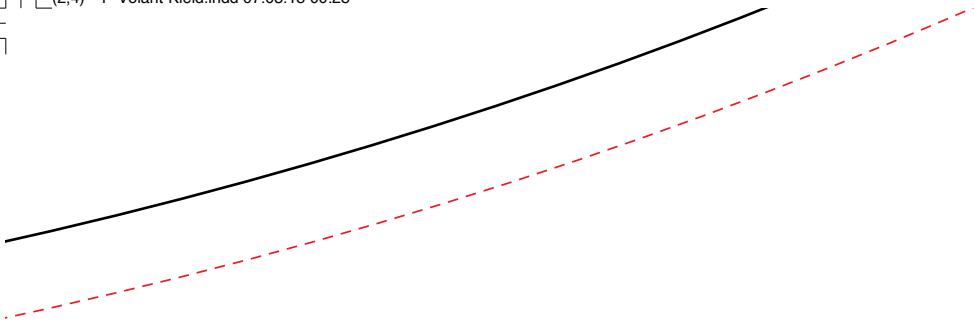
Schnittlinie oberer.



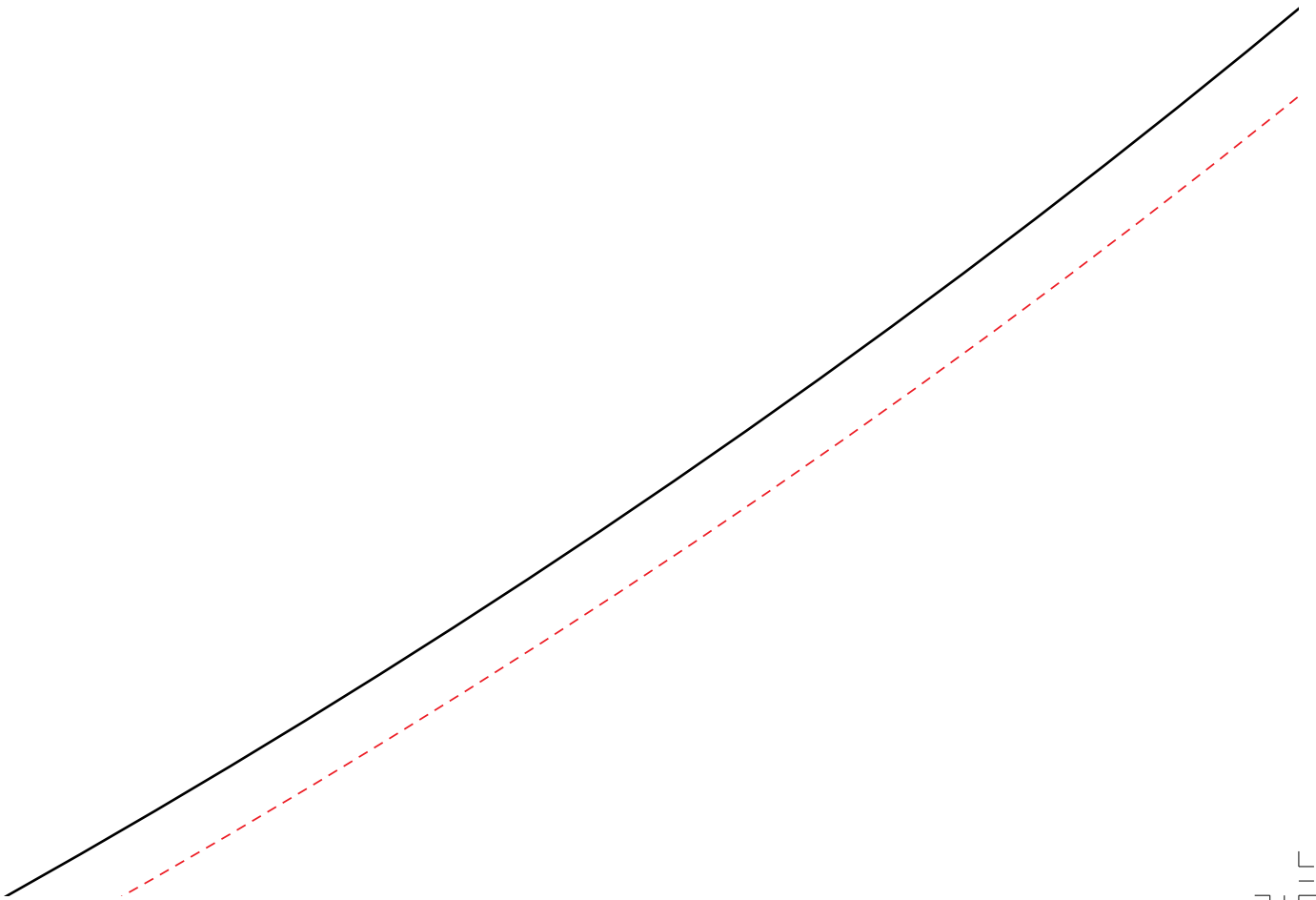




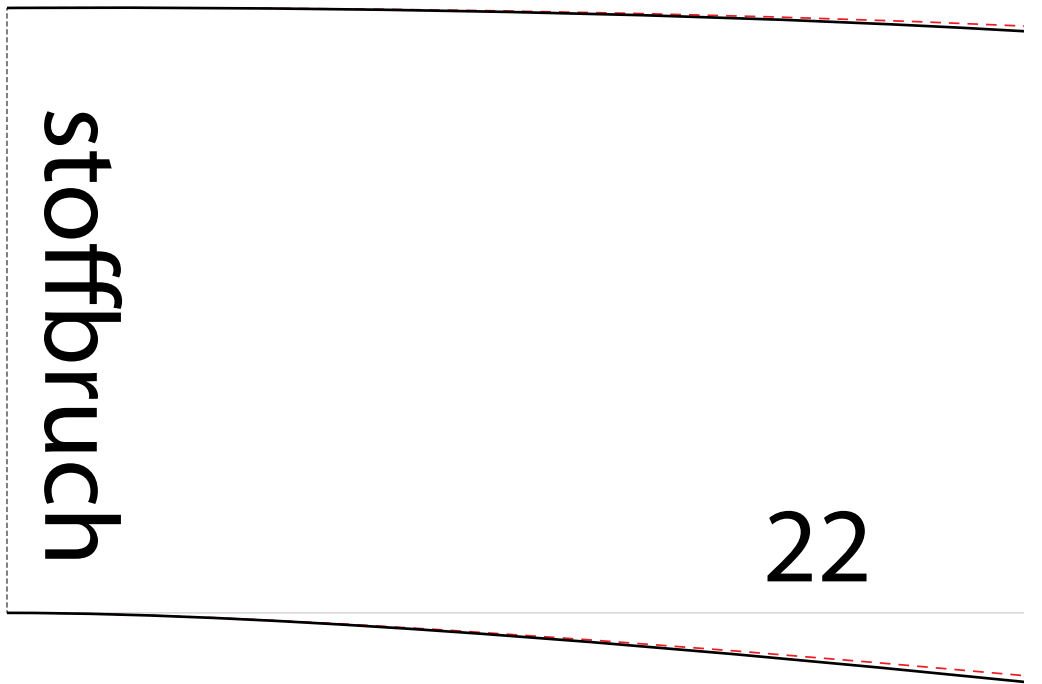
38



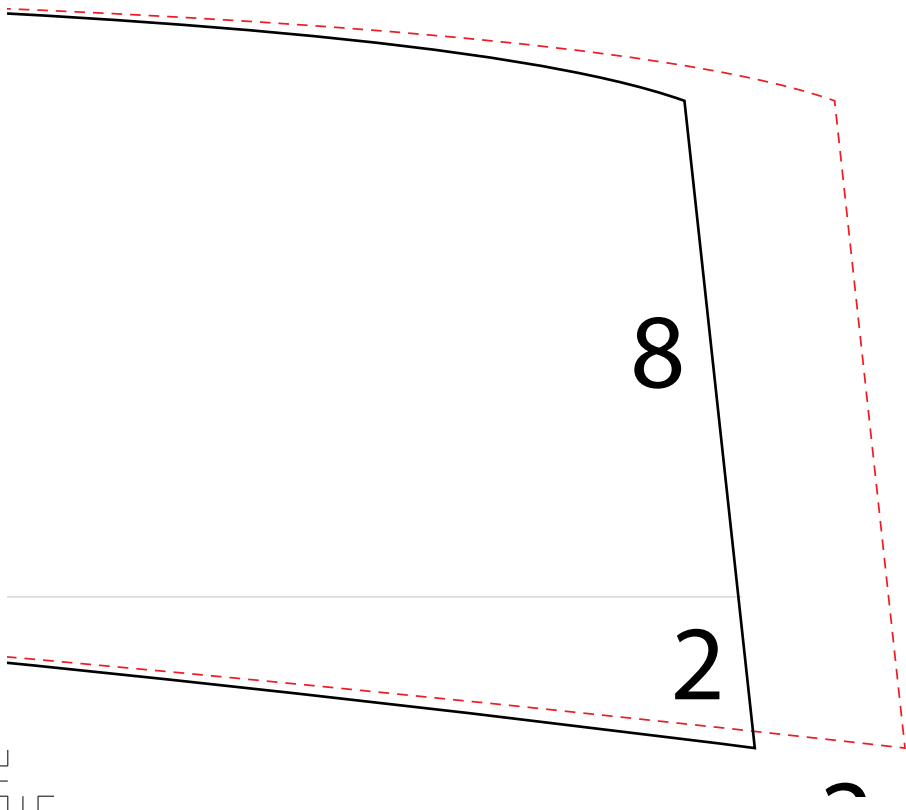




Schnittlinie unterer Volant

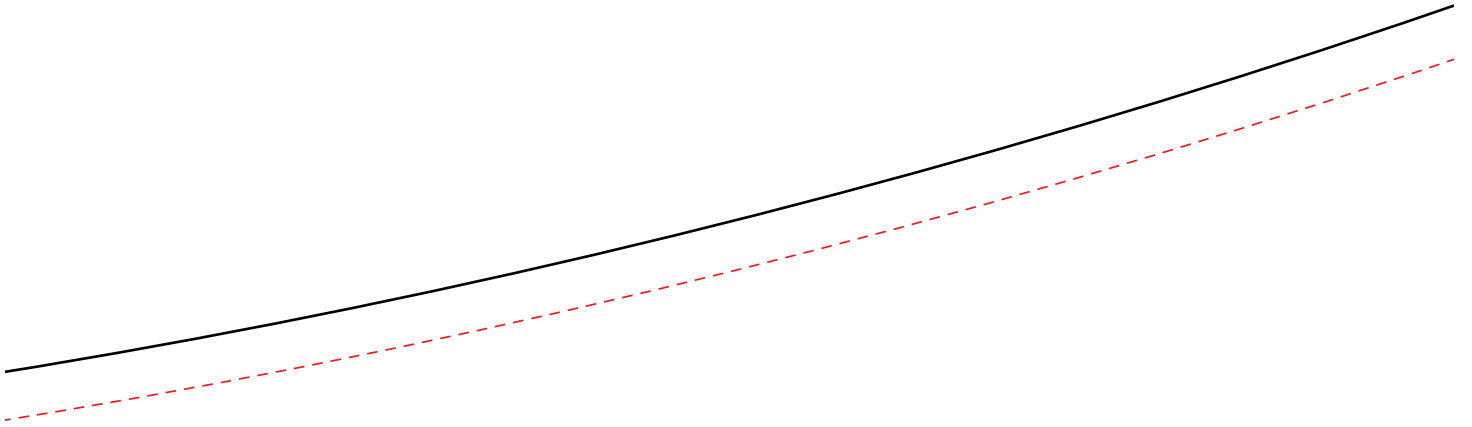


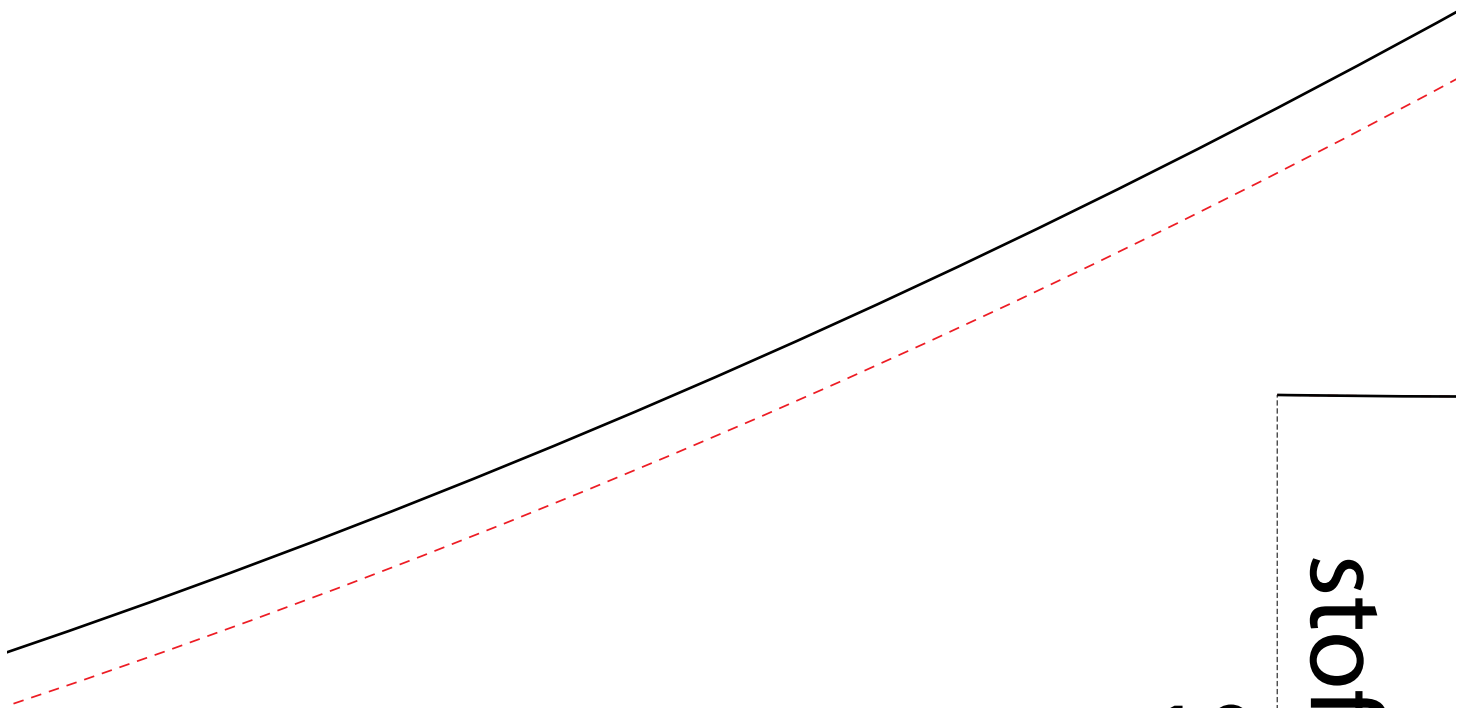
Beleg vorne





Oberer und Unterer Volant





stoffbruch

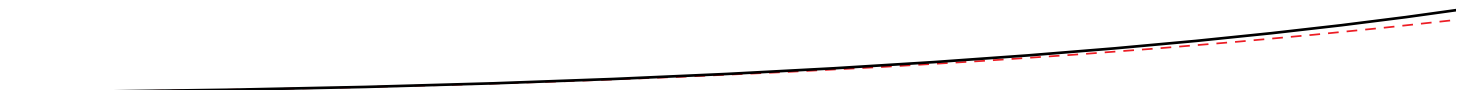
10

Bele





24



eg hinten



