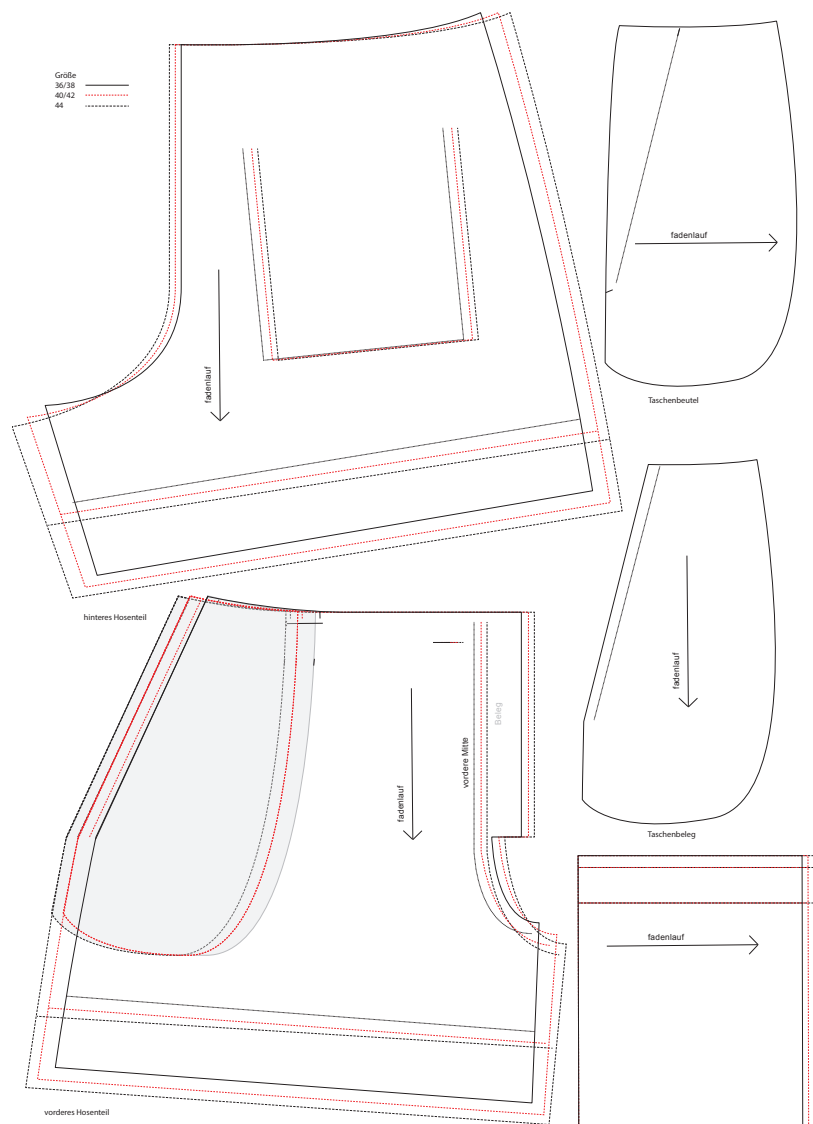


Shorts Genny

Kollektion °19

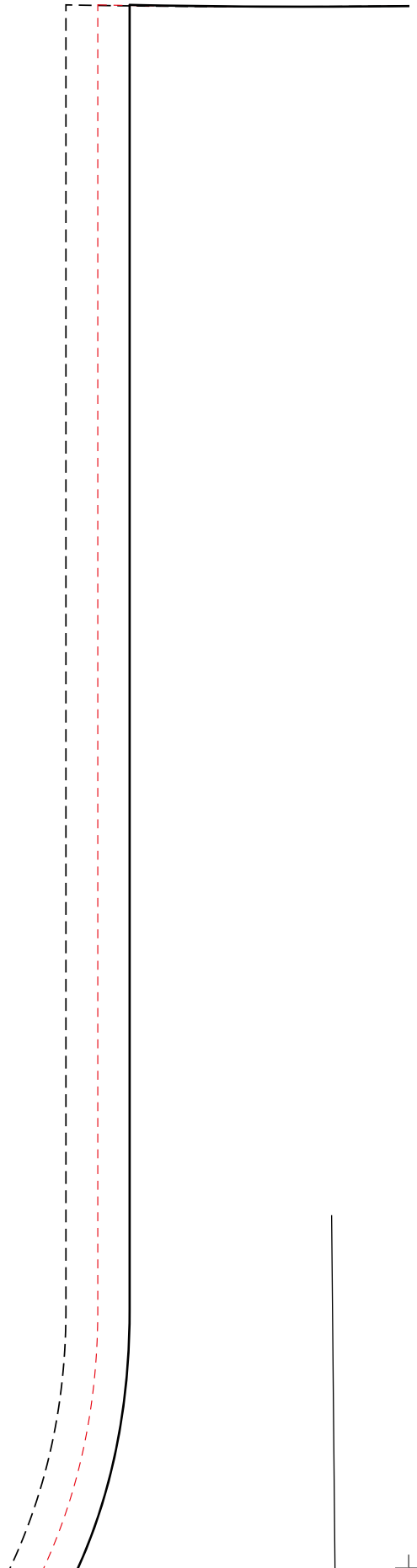
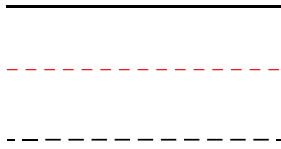
Größe 36-38/40-42 /44

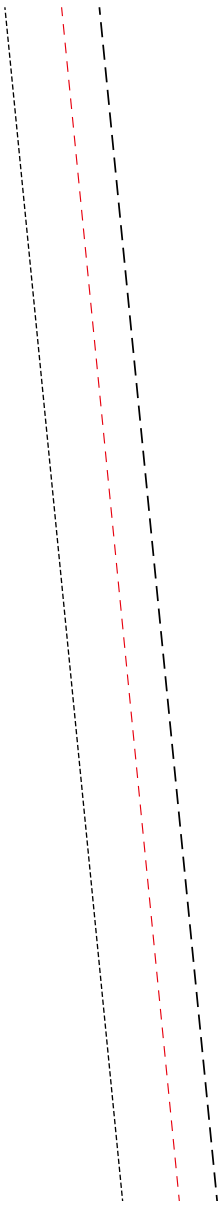
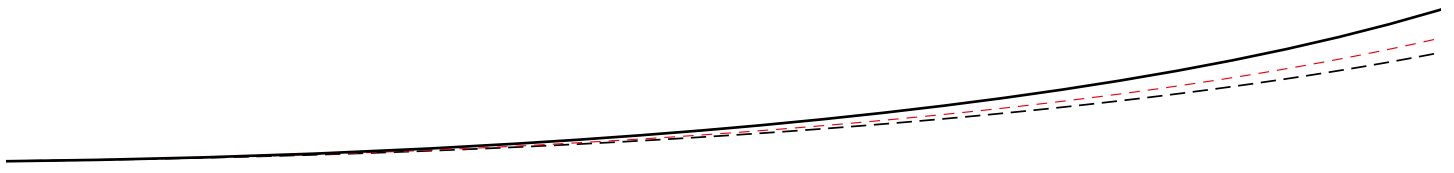
Drucken Sie die Schnittmusterseiten auf DIN A4 Papier aus. Achten Sie dabei darauf, dass das Druckergebnis in den Druckereinstellung nicht skaliert wird. Das Kontrollkästchen sollte genau 1 cm auf allen Seiten betragen.

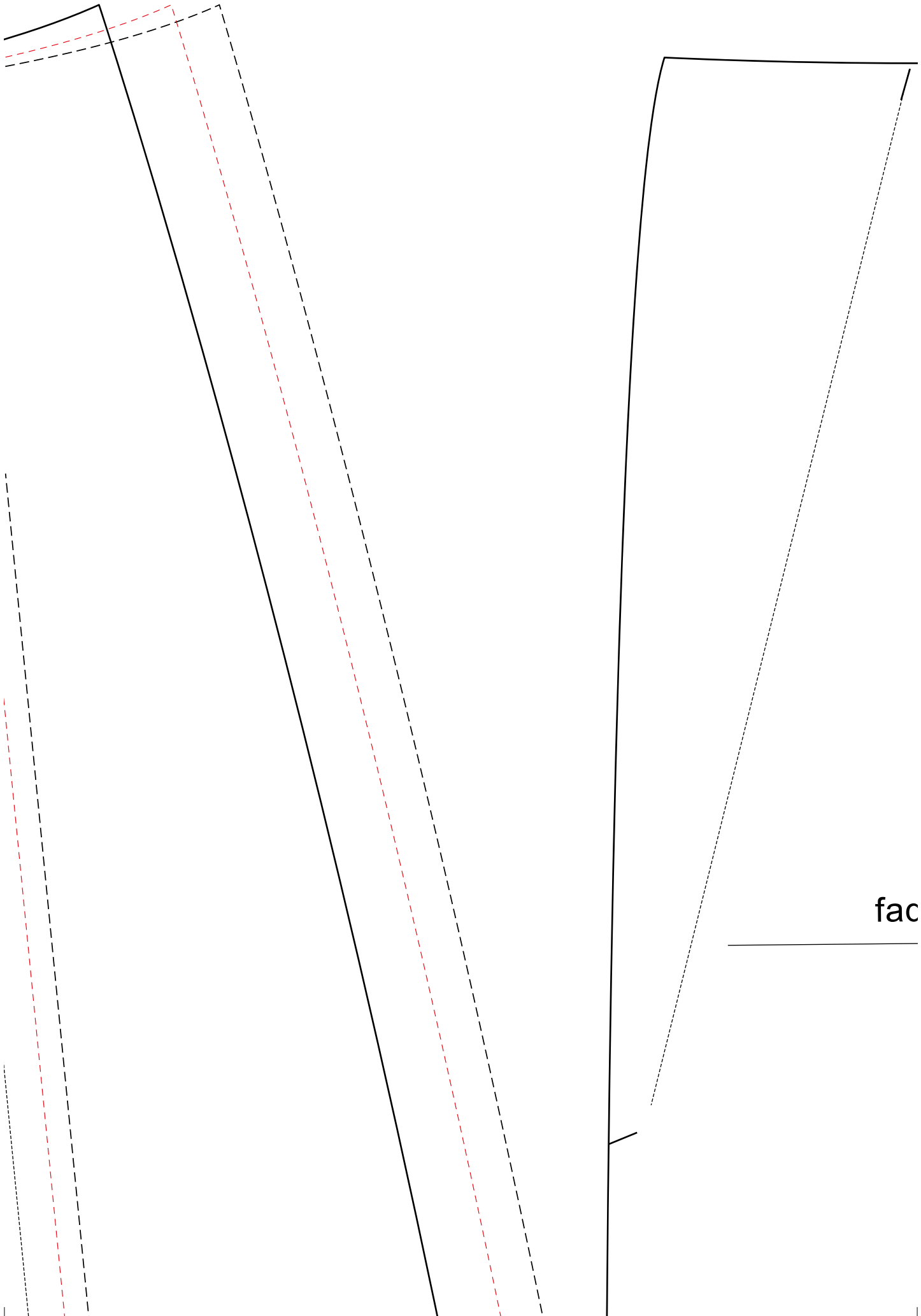


Größe
36/38
40/42
44

1cm

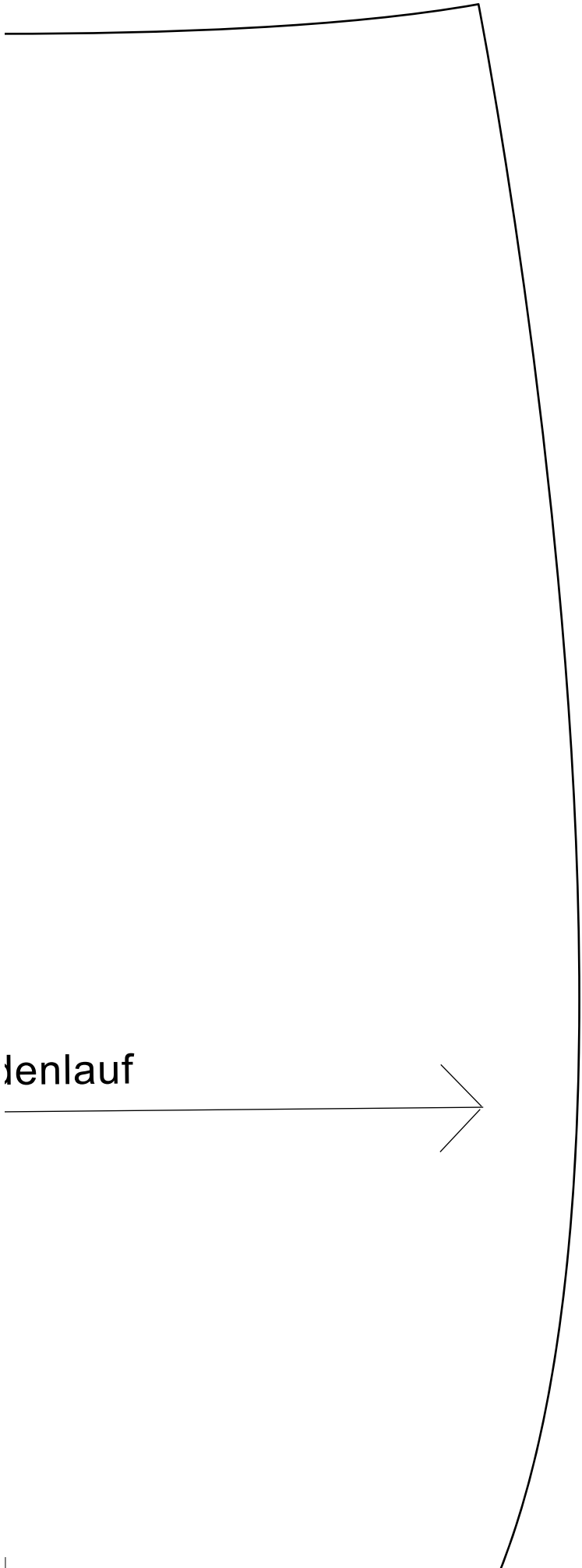






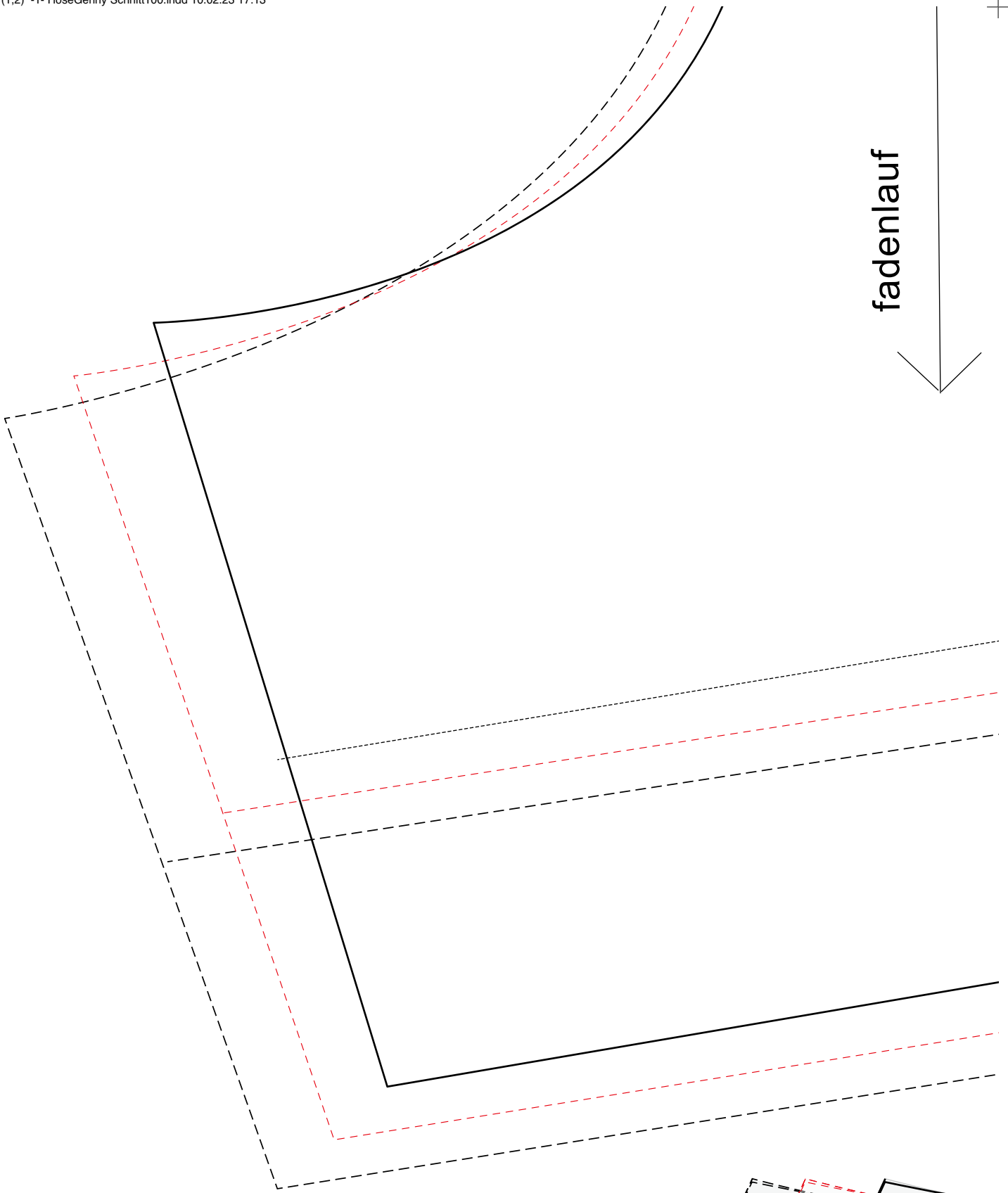
fac



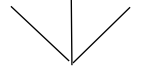


denlauf

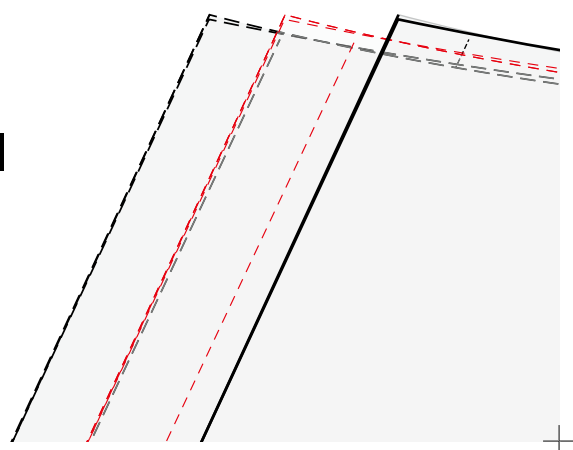


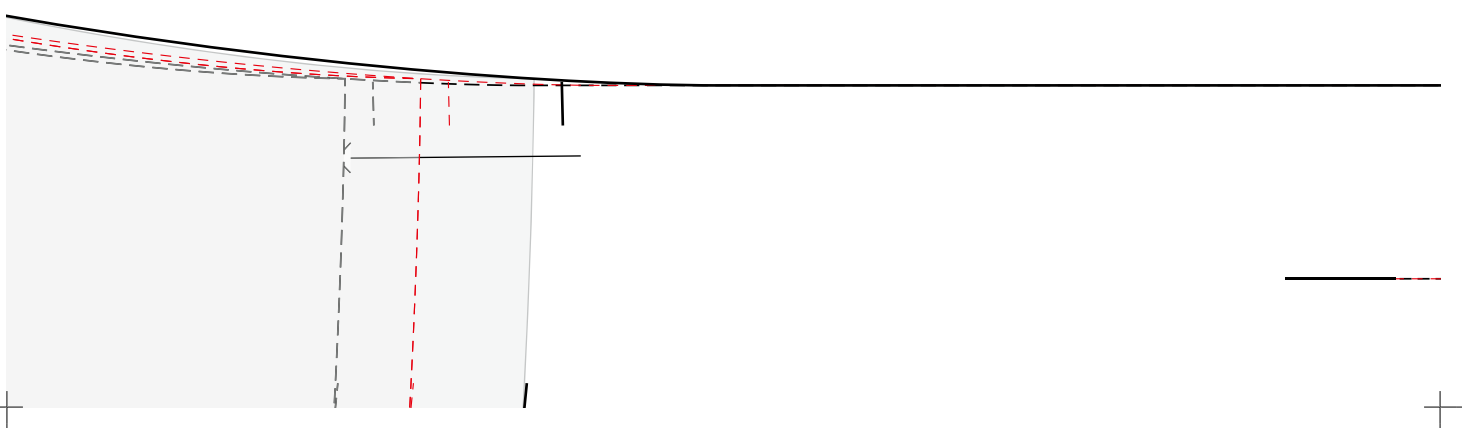
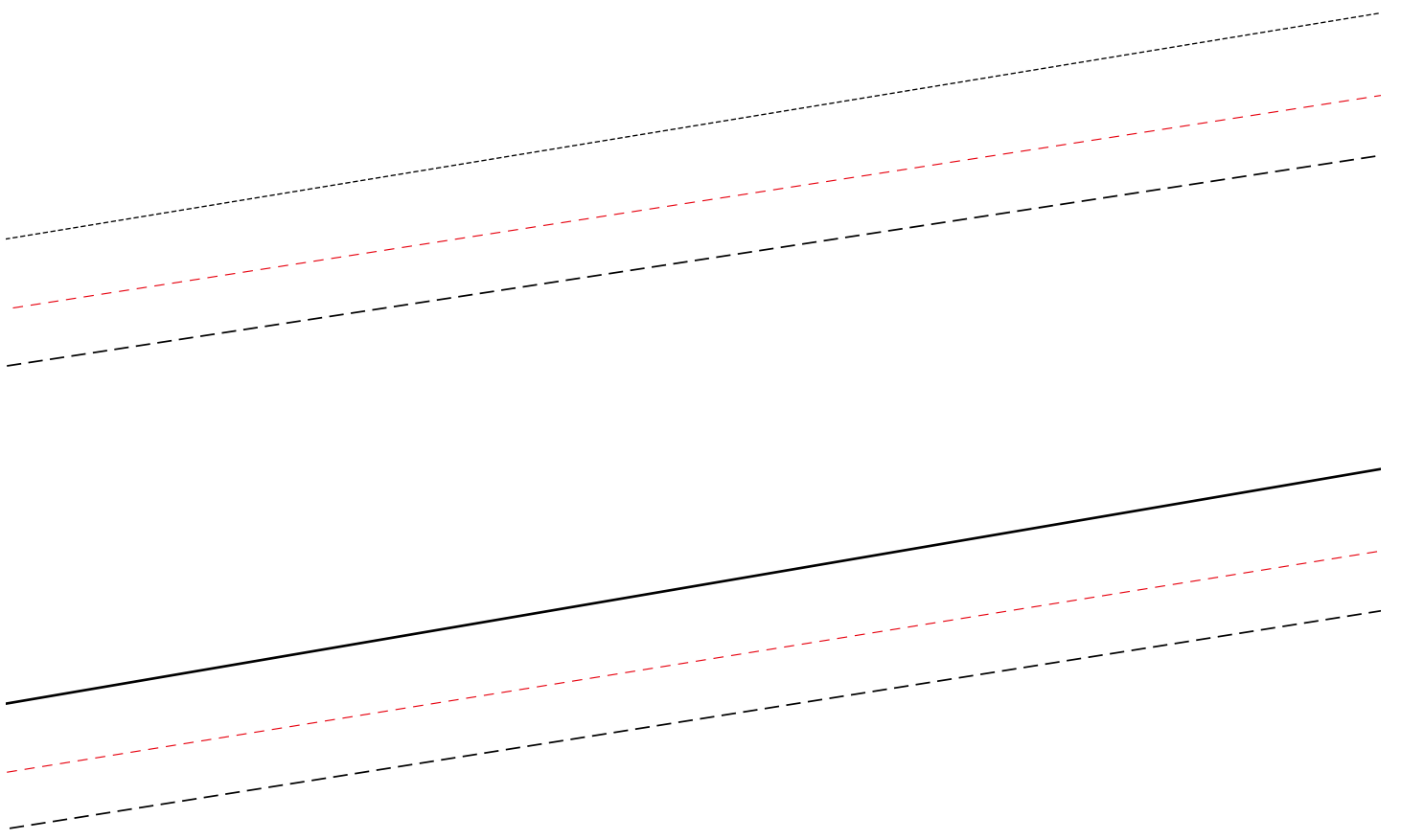


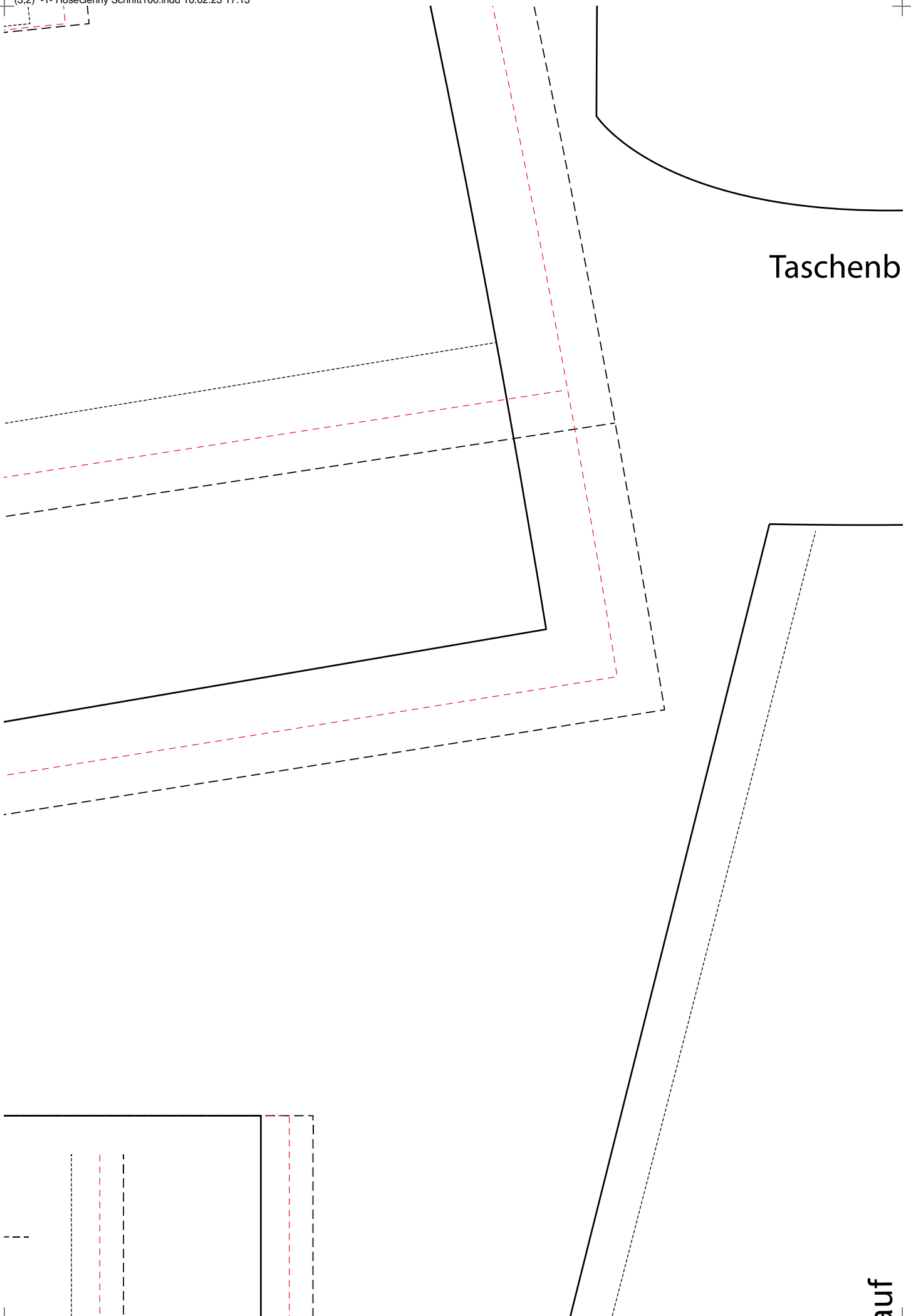
fadenlauf



hinteres Hosenteil

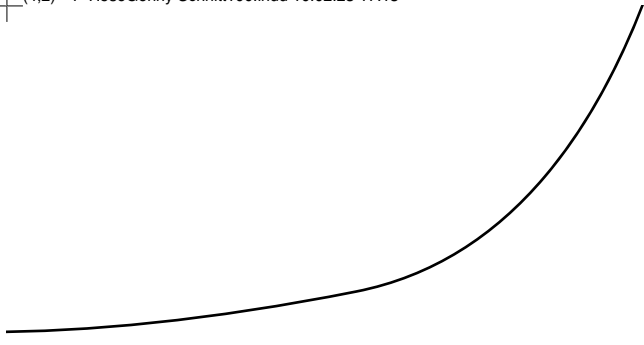




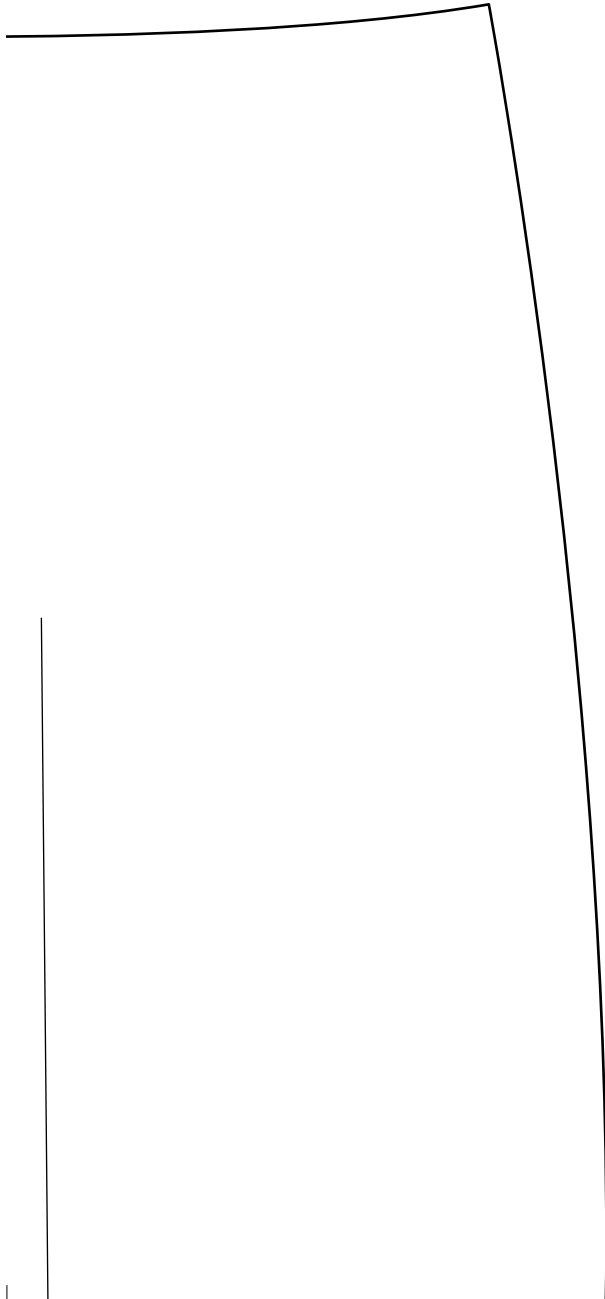


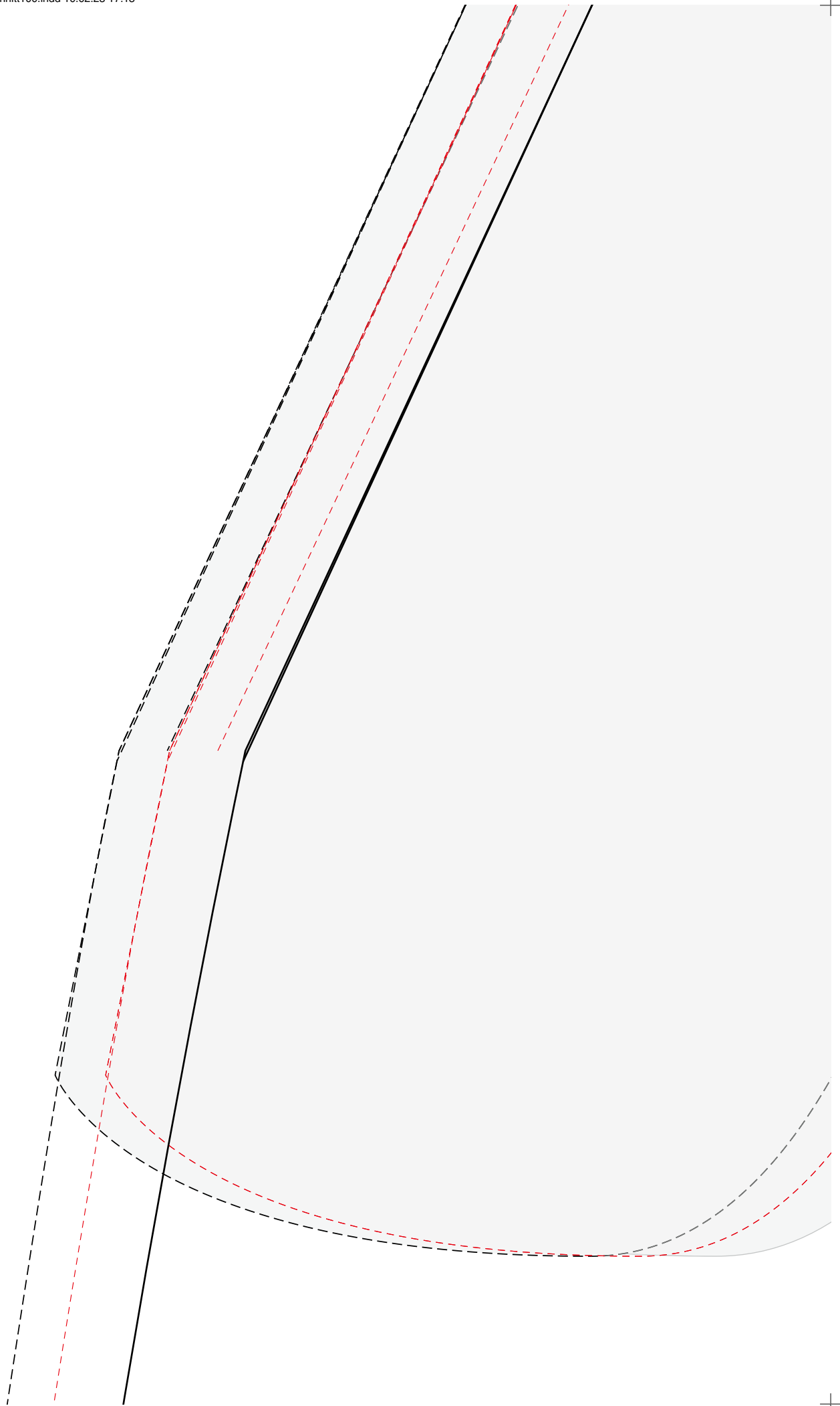
Taschenb

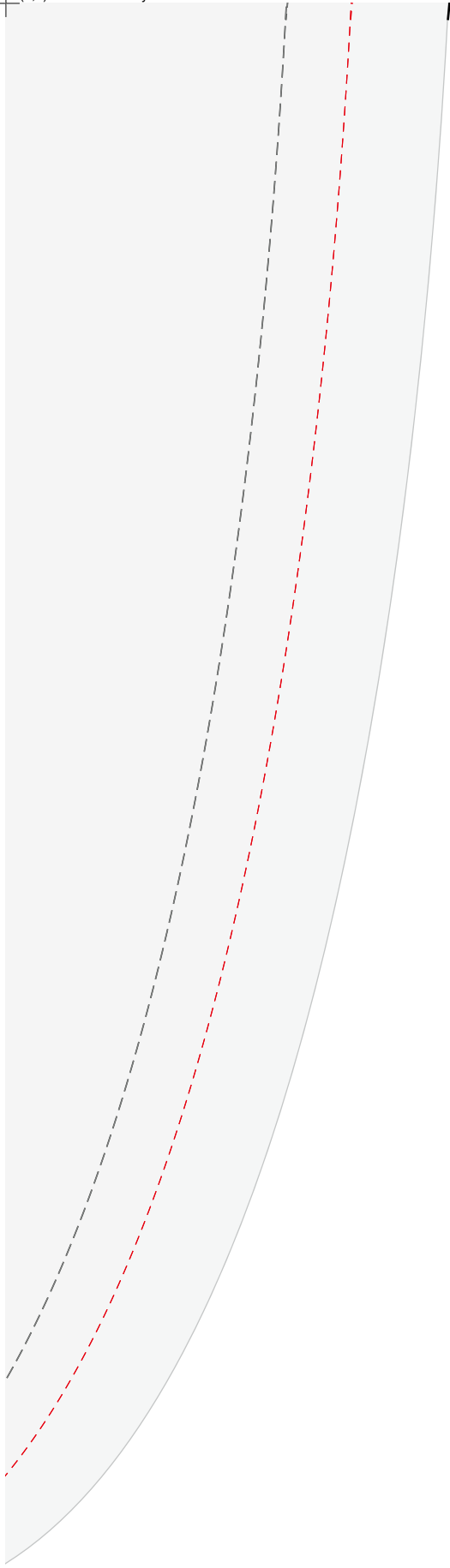
auf



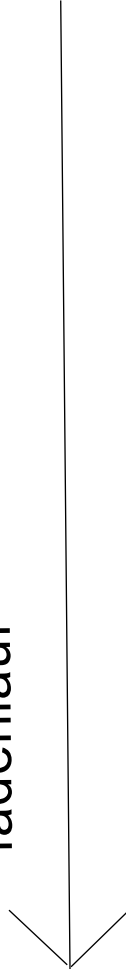
eutel







fadenlauf



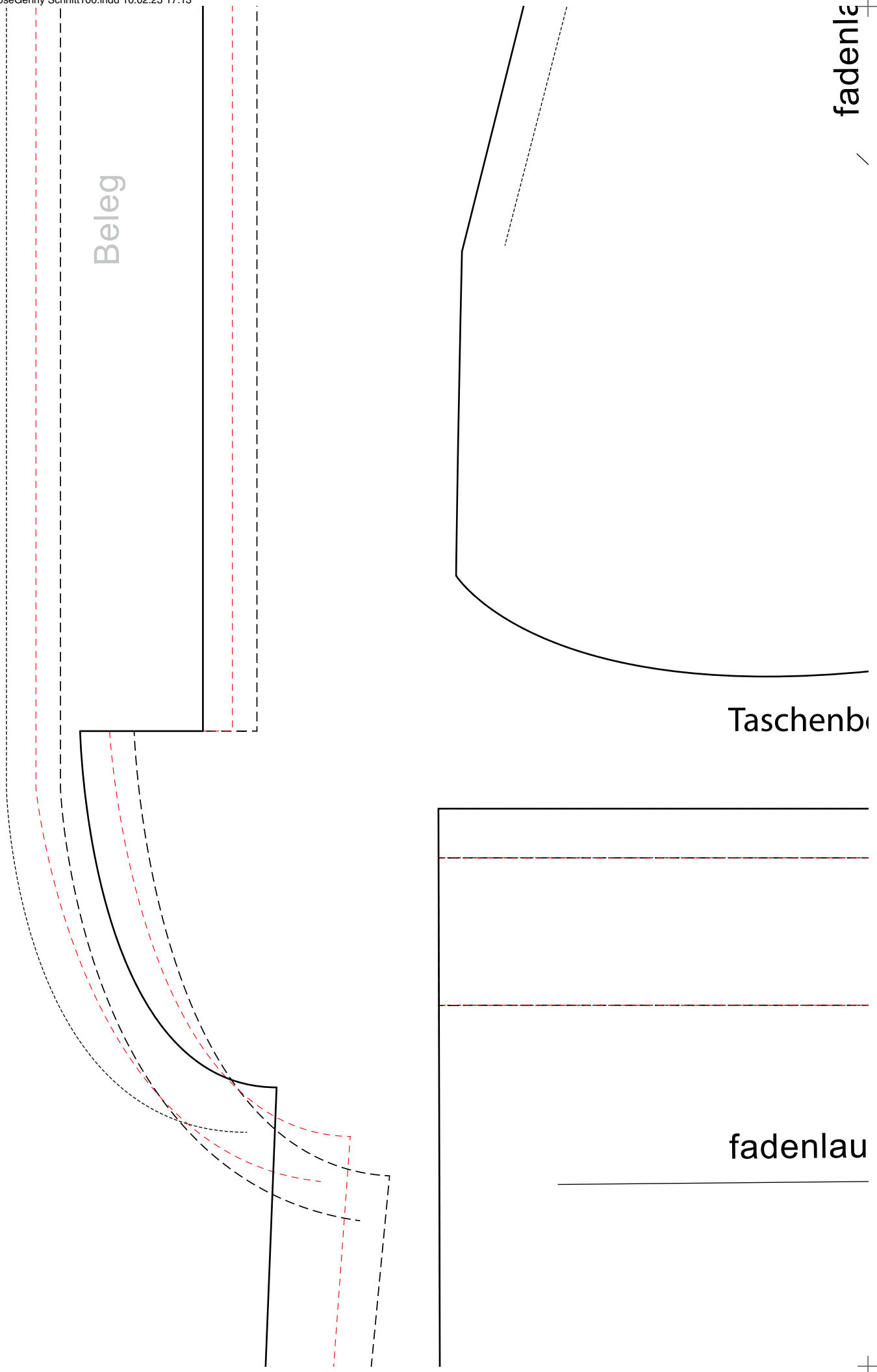
vordere Mitte

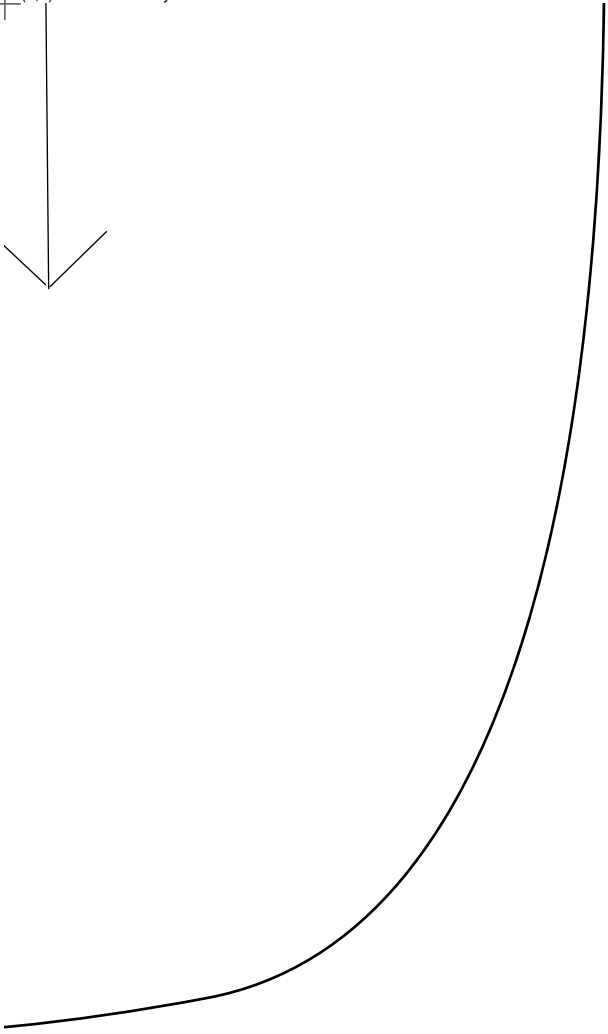
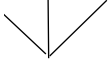
Beleg

Taschenb

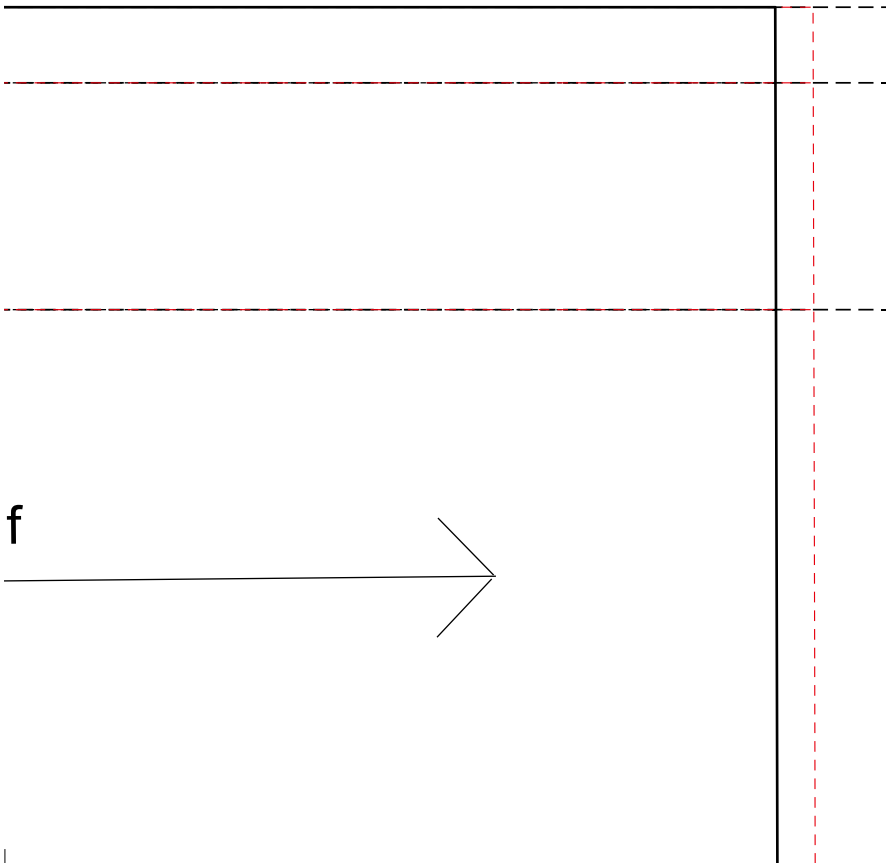
fadenlau

fadenl



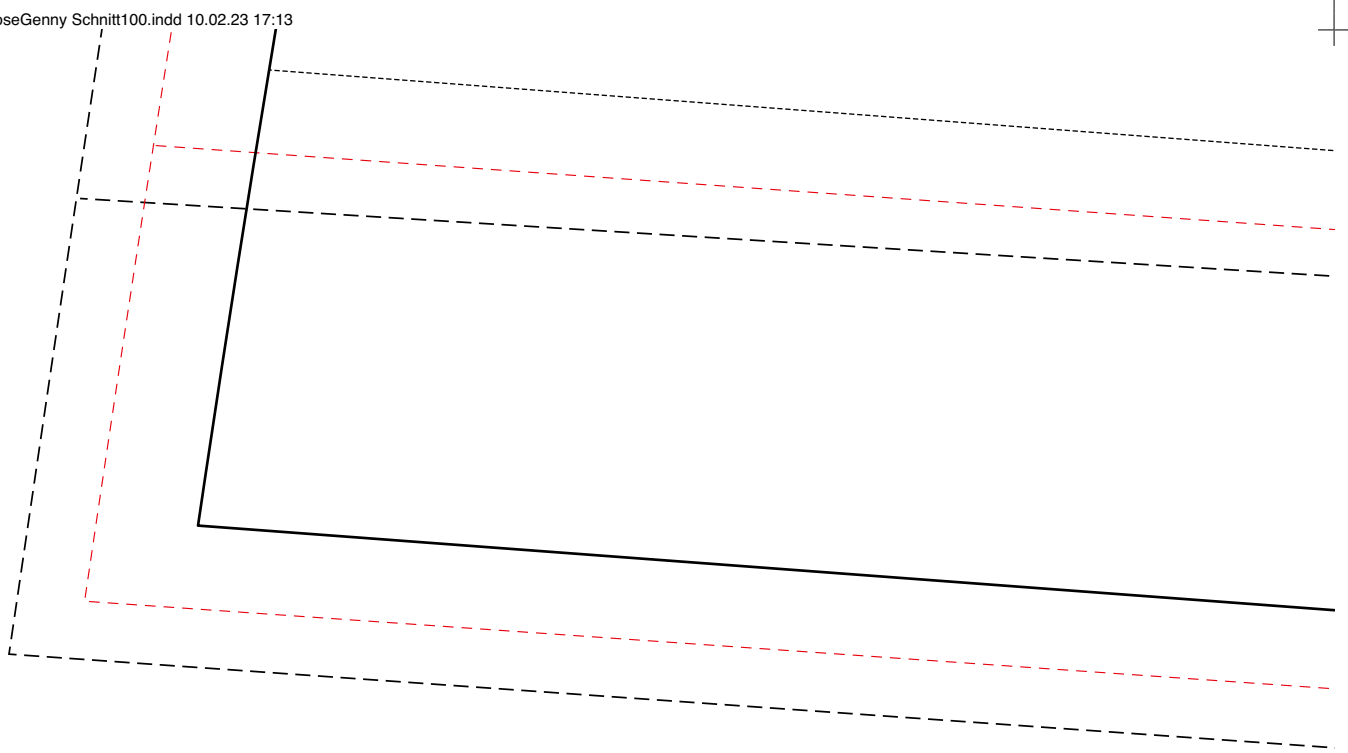


eleg

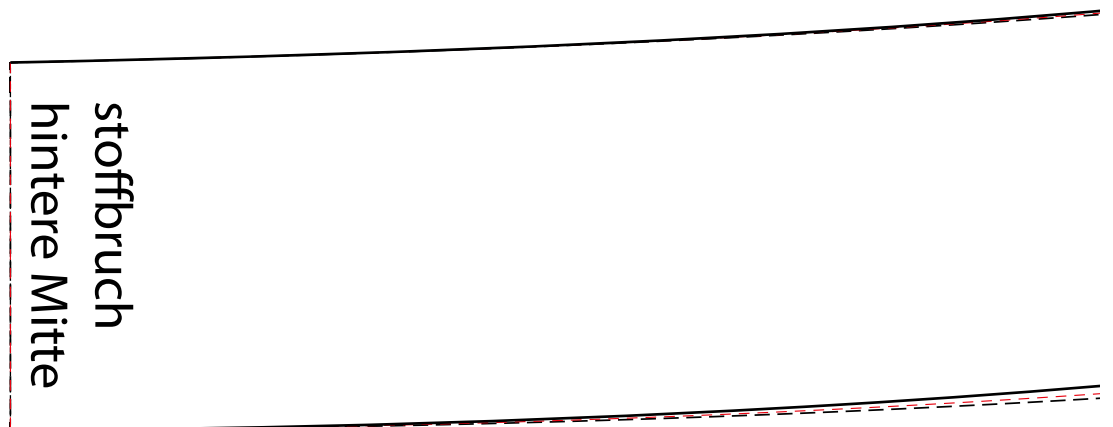


f



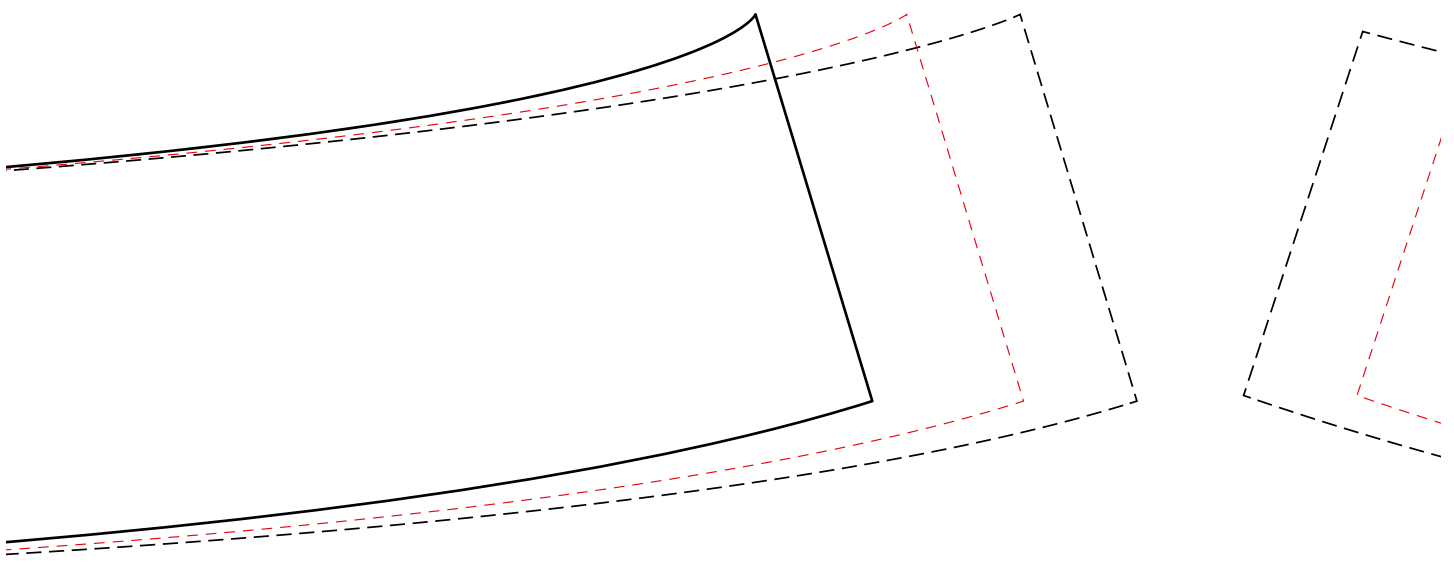
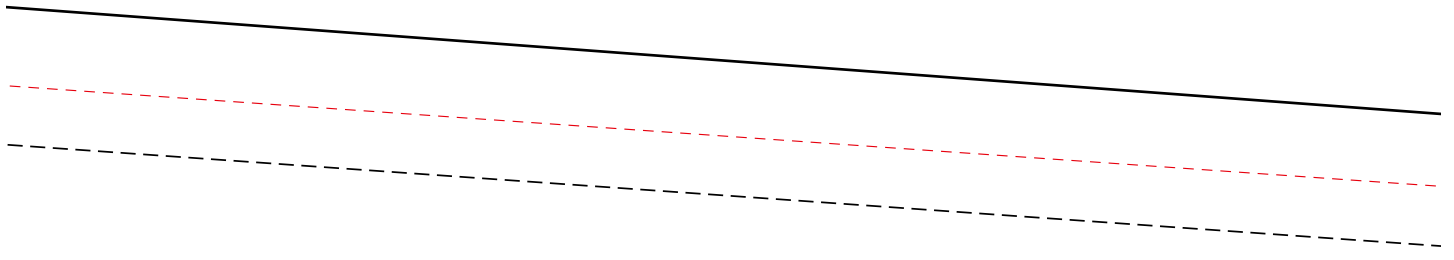
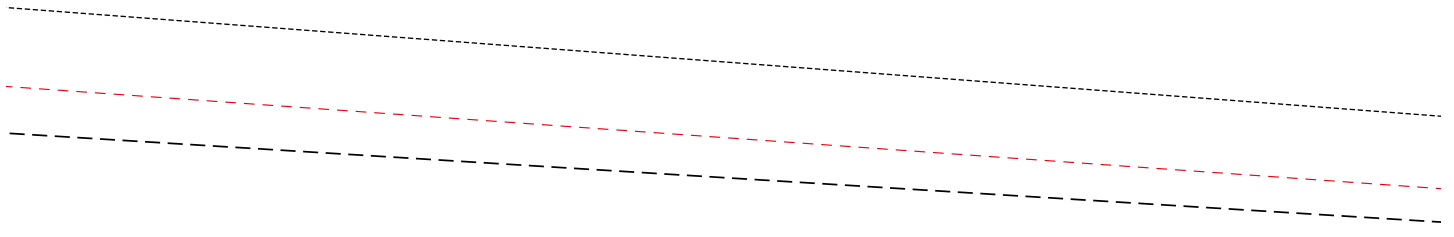


vorderes Hosenteil



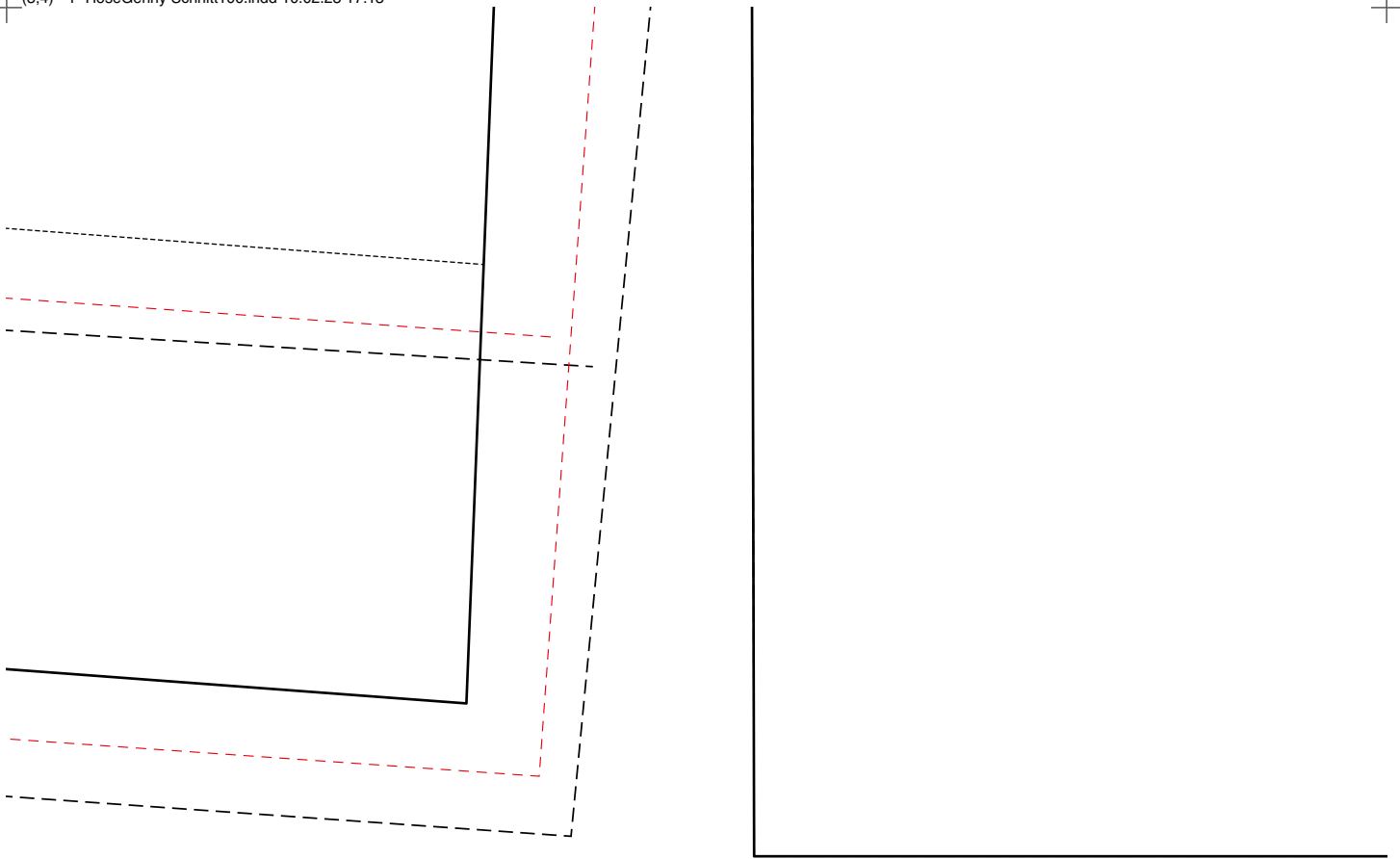
hinterer Besatz

stoffbruch
hintere Mitte



vordere





hintere Hosentasche



or Besatz



stoffbruch
vordere Mitte

