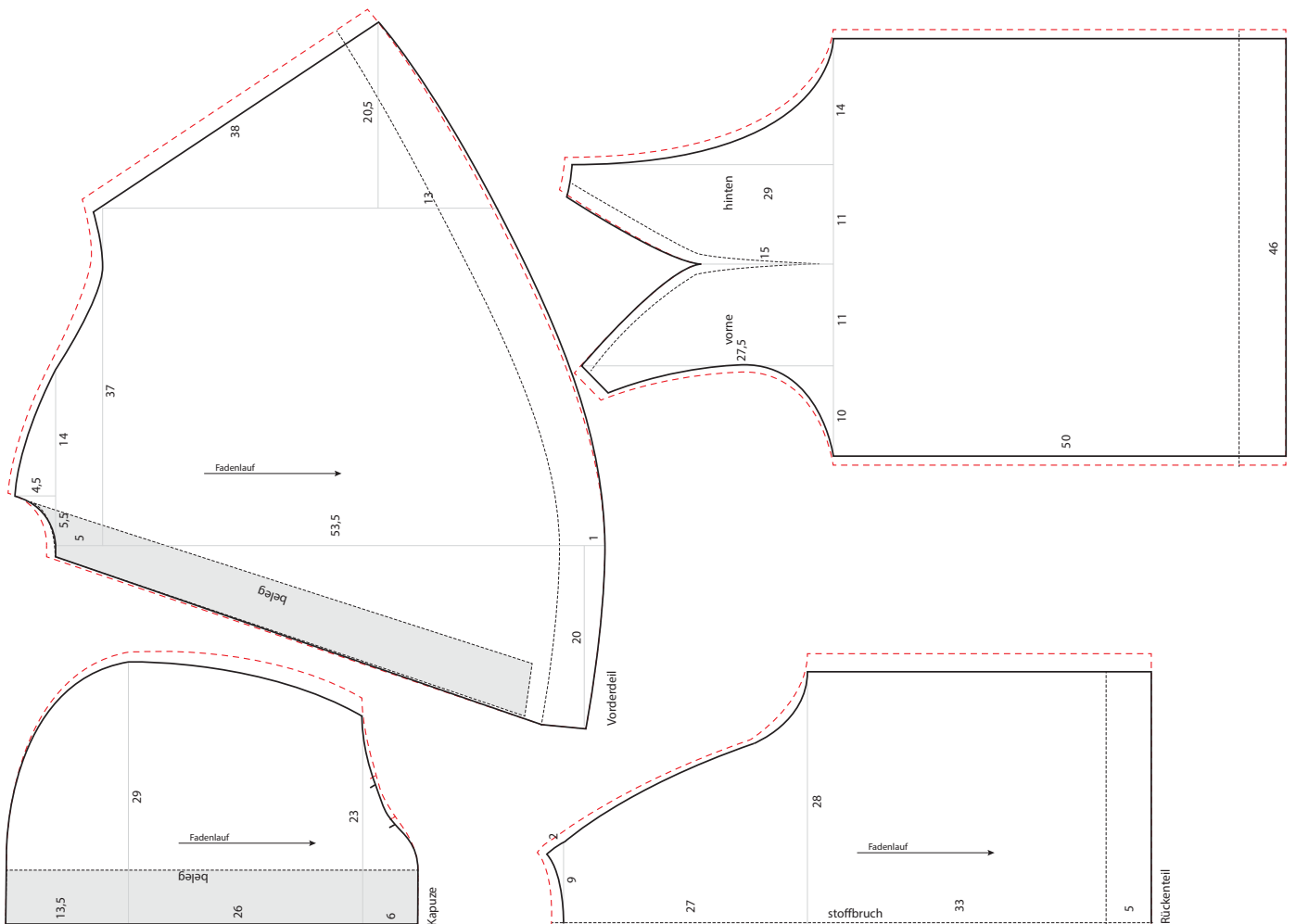


Wickeljacke mit Kapuze

Kollektion N°10

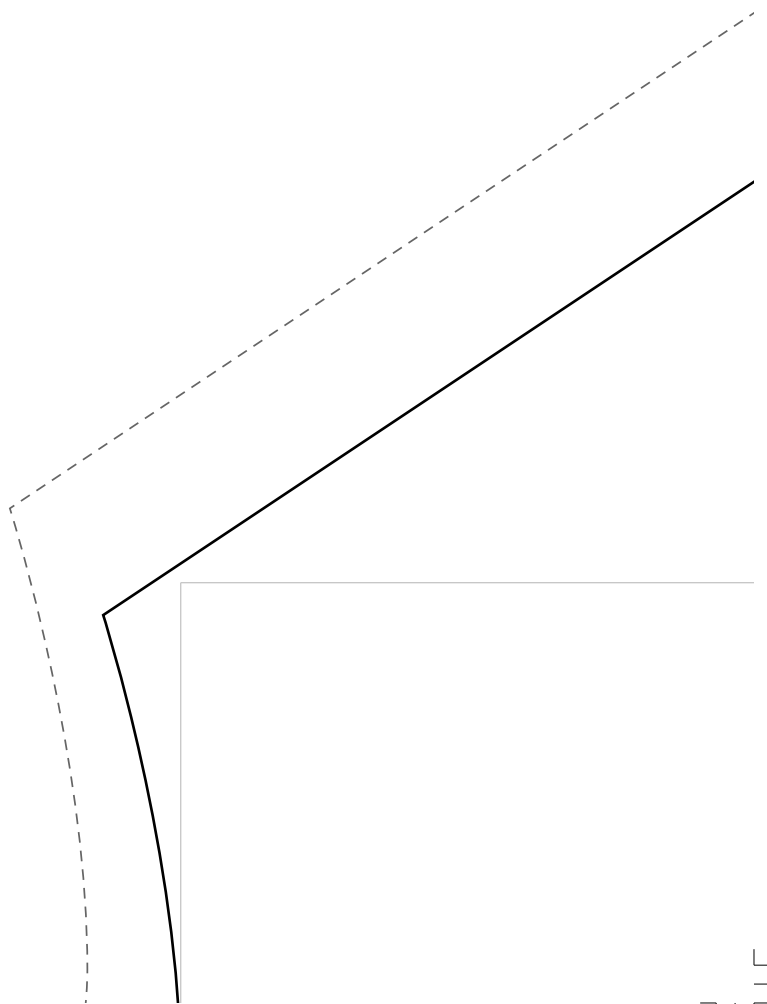
36/38 und 40/42

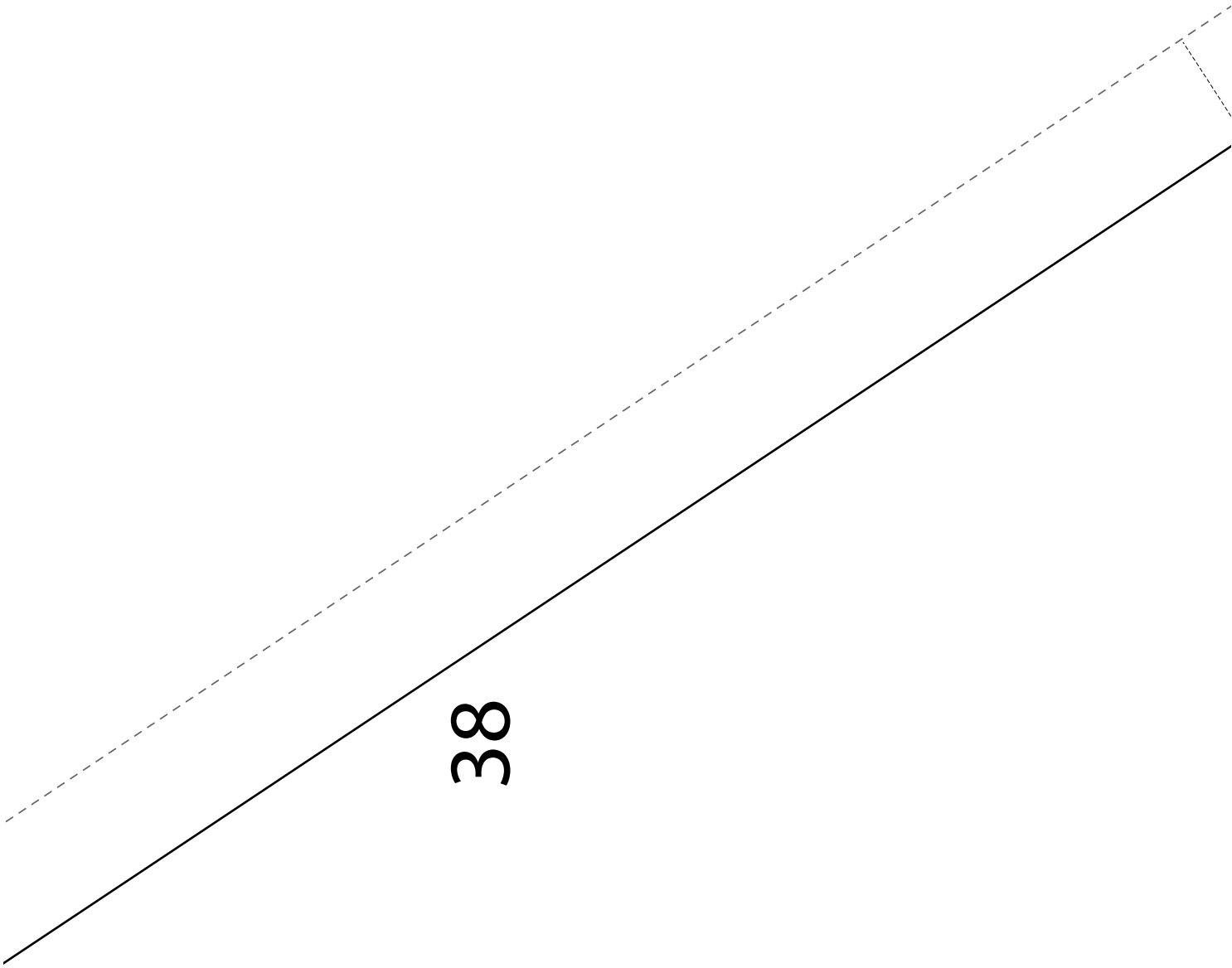
Drucken Sie die Schnittmusterseiten auf DIN A4 Papier aus. Achten Sie dabei darauf, dass das Druckergebnis in den Druckereinstellung nicht skaliert wird. Das Kontrollkästchen sollte genau 1 cm auf allen Seiten betragen.

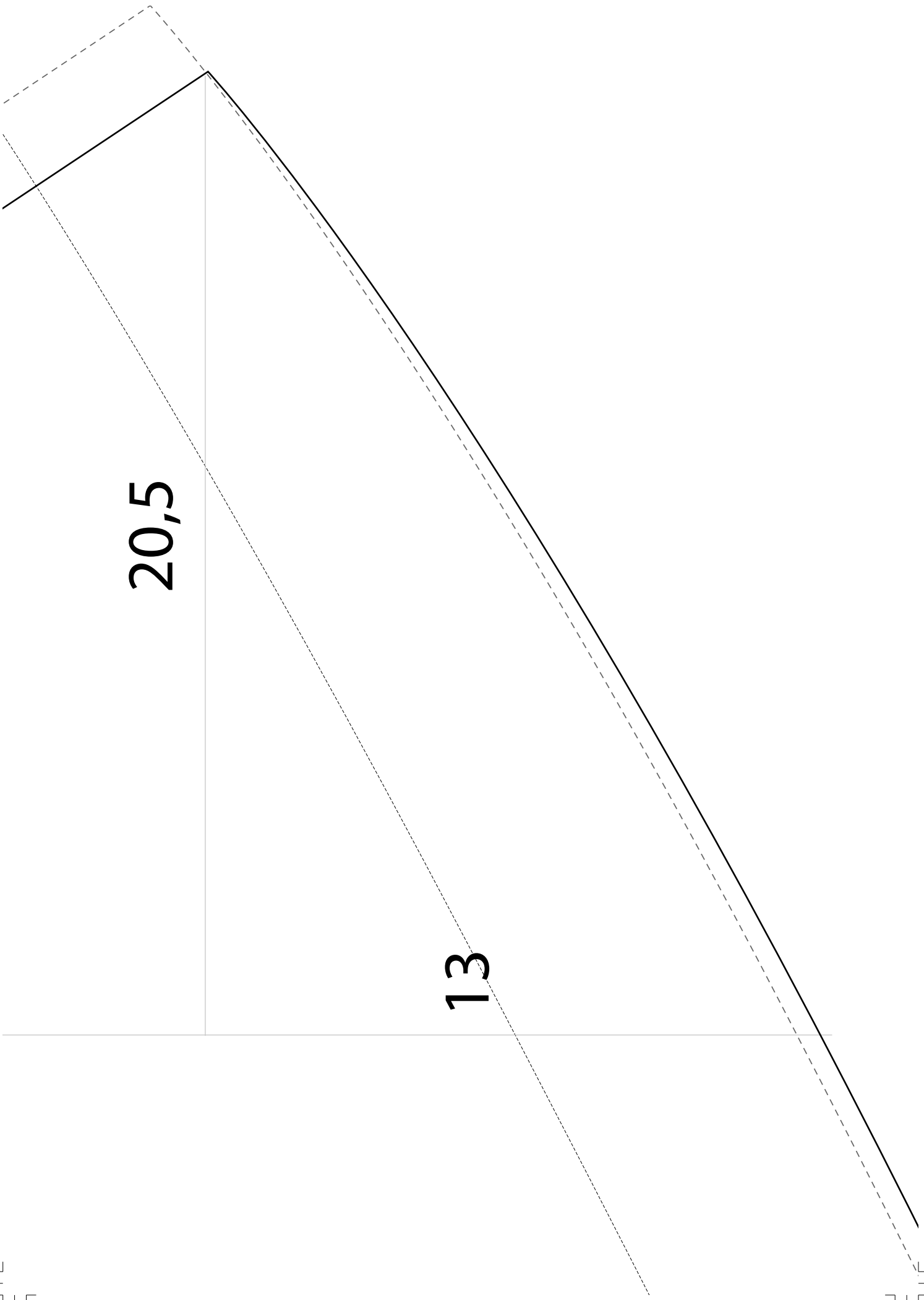


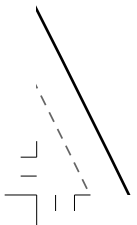
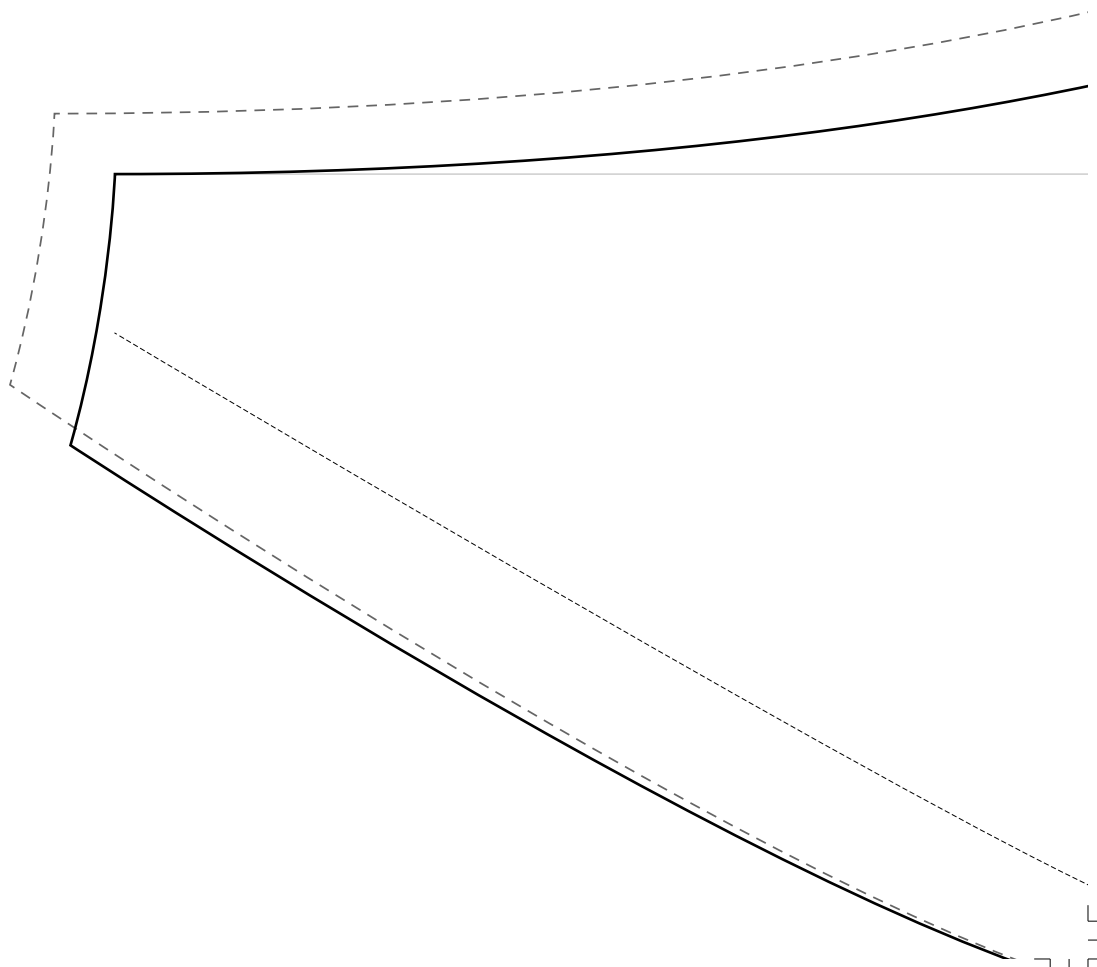


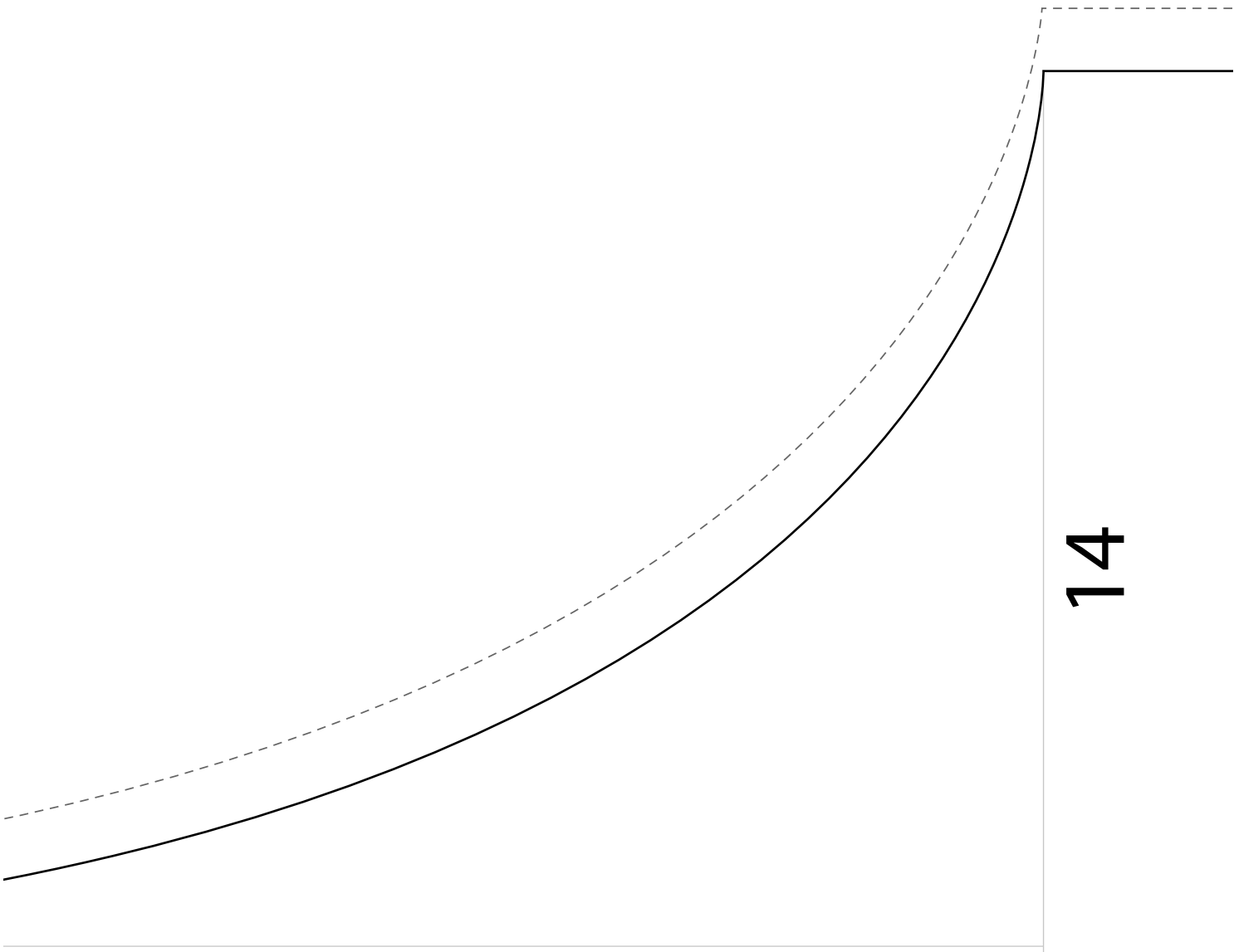
1cm











hinten

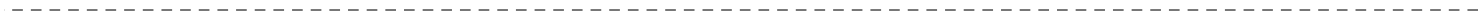
29

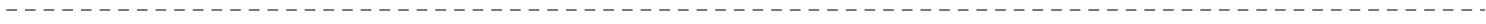
14

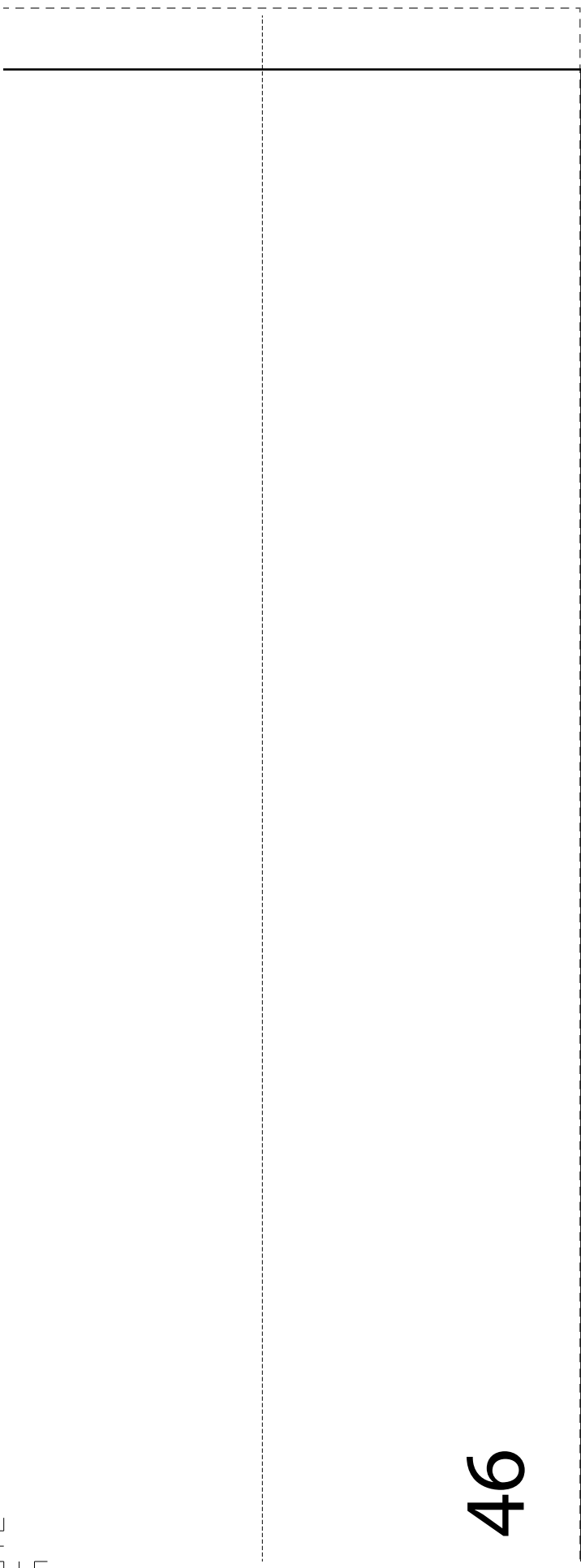
11

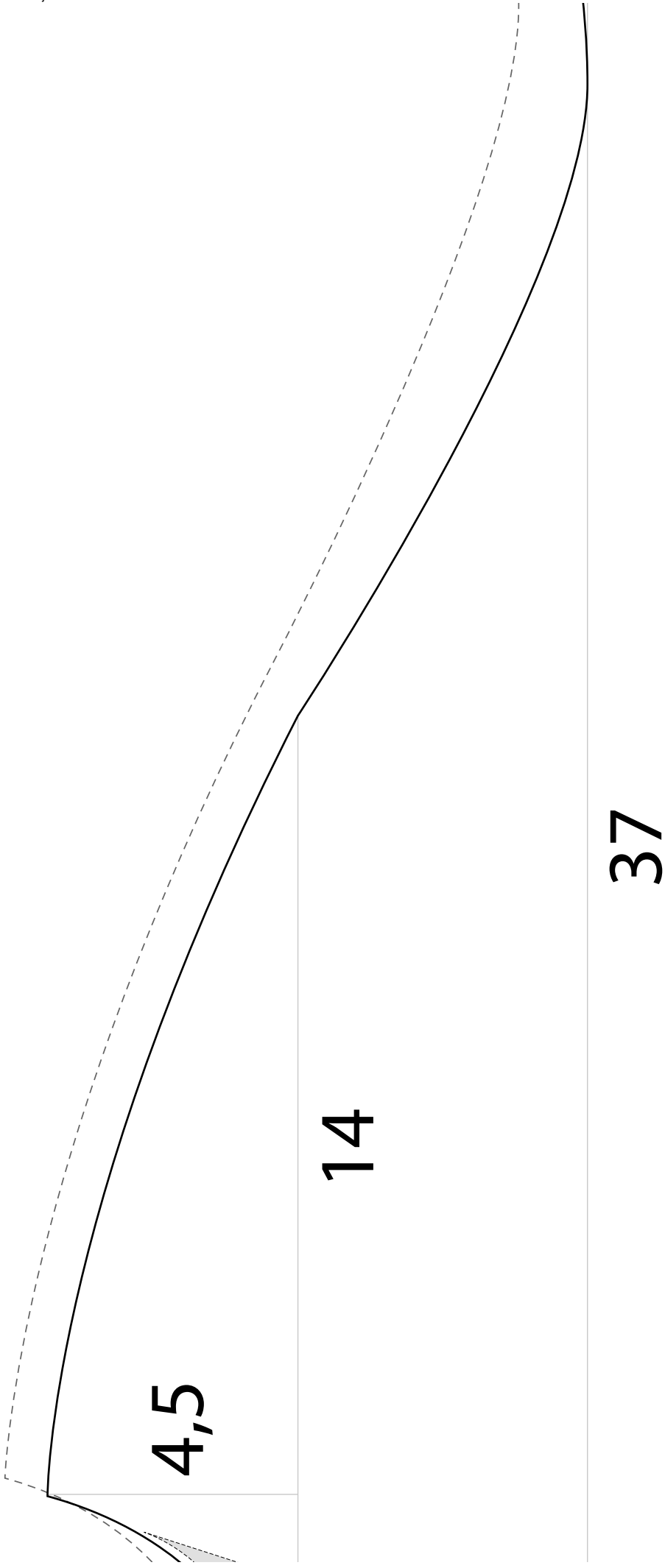
15











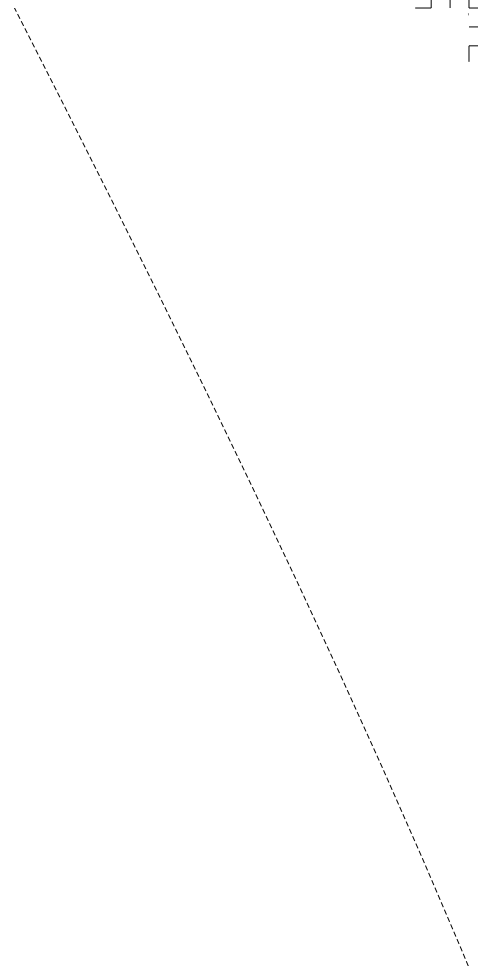
4,5

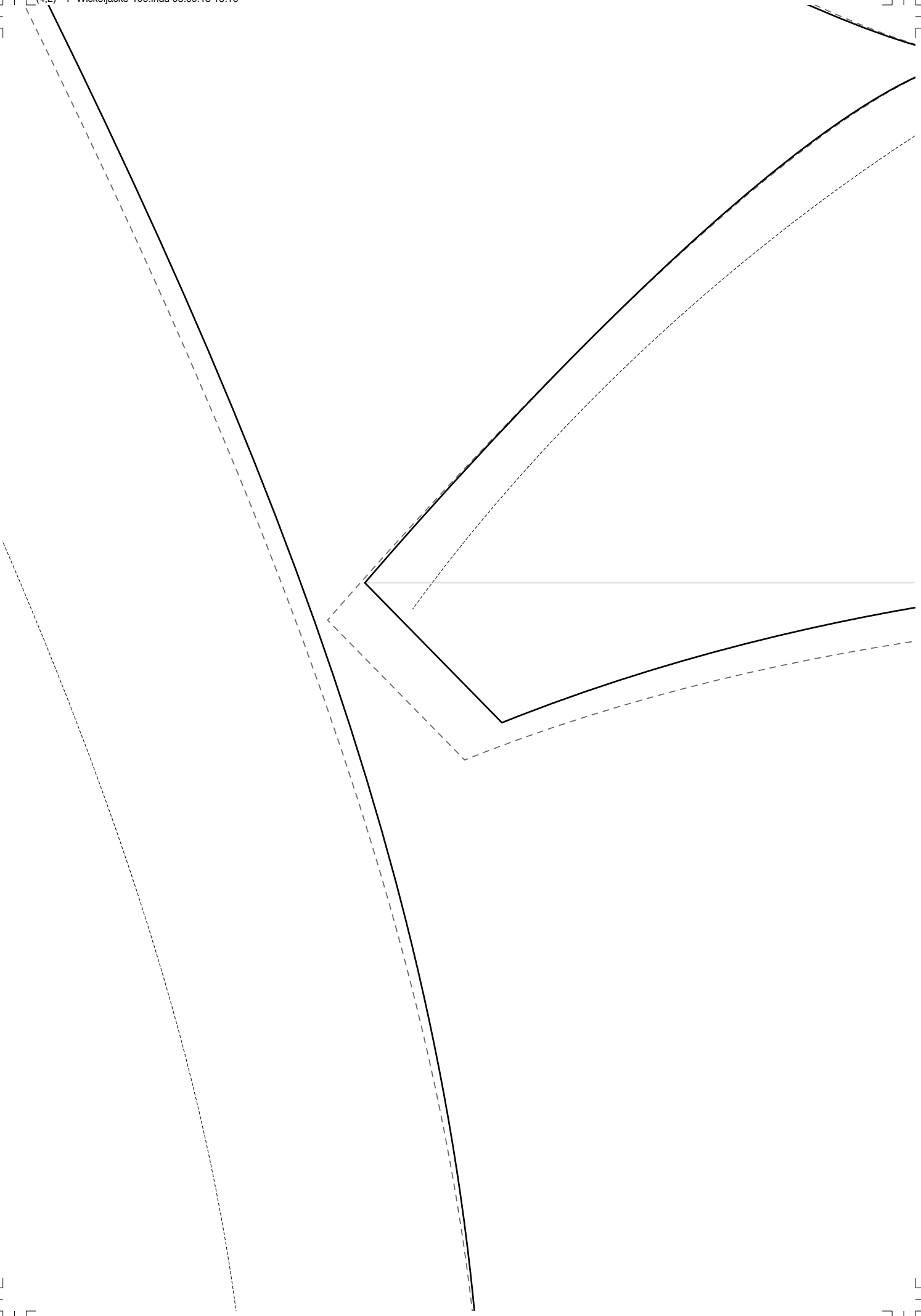
14

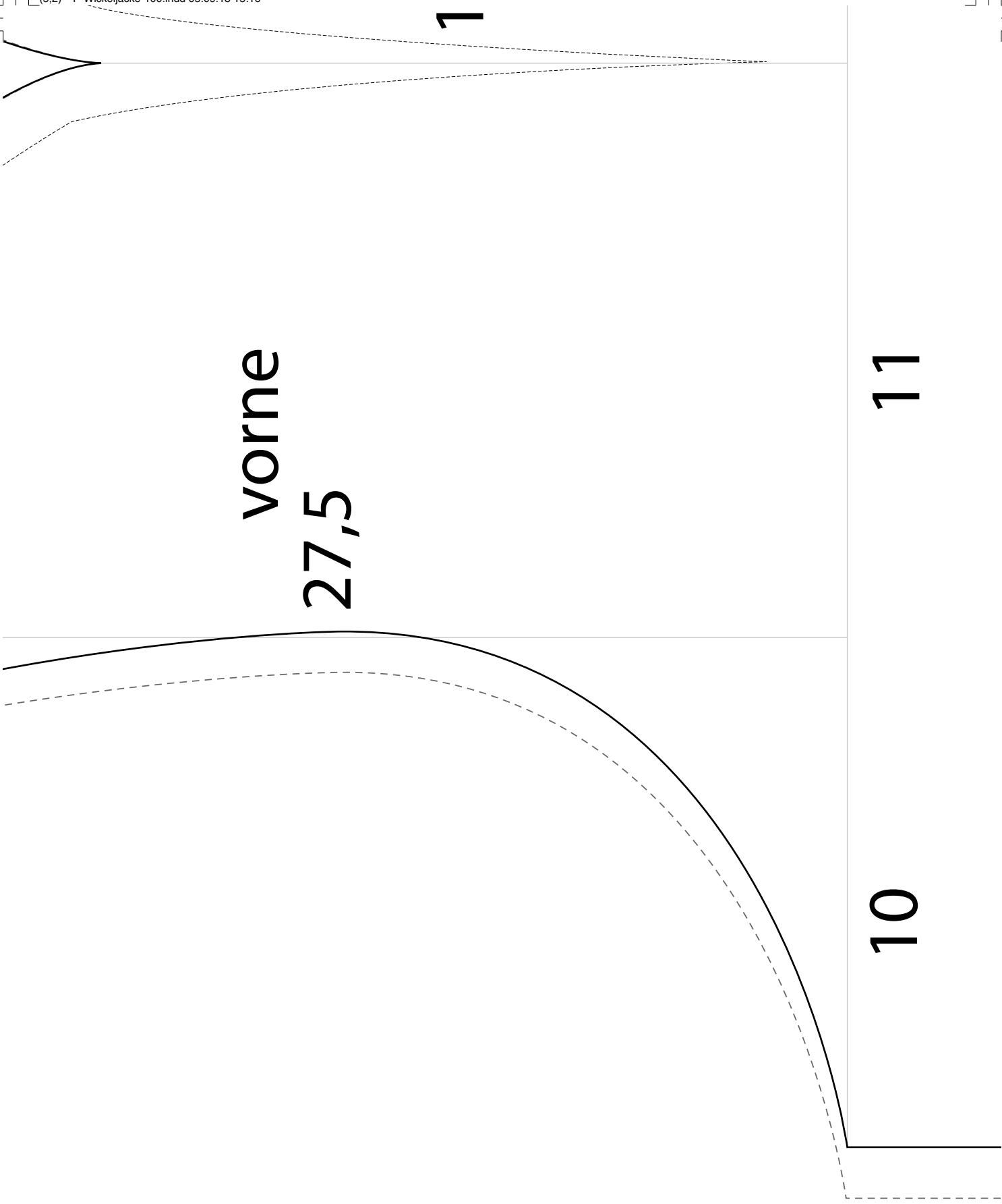
37

Fadenlauf









1

vorne

27,5

11

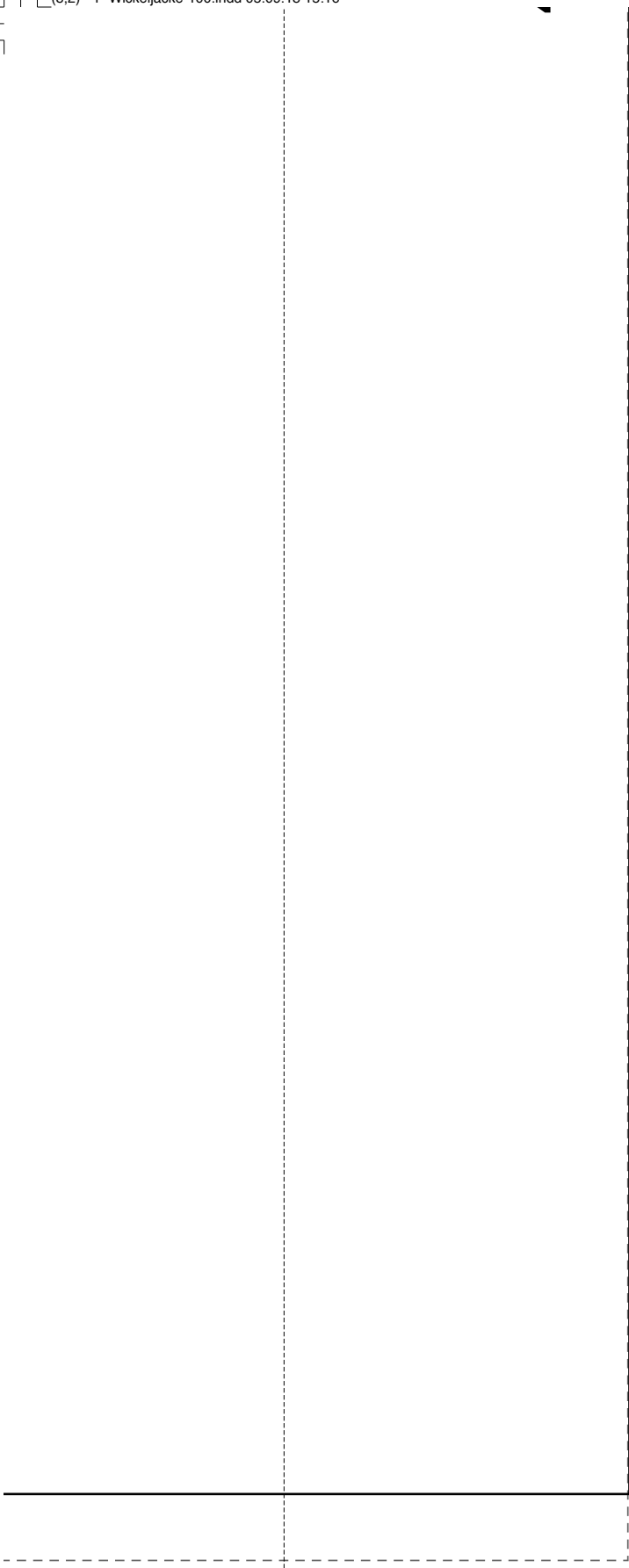
10

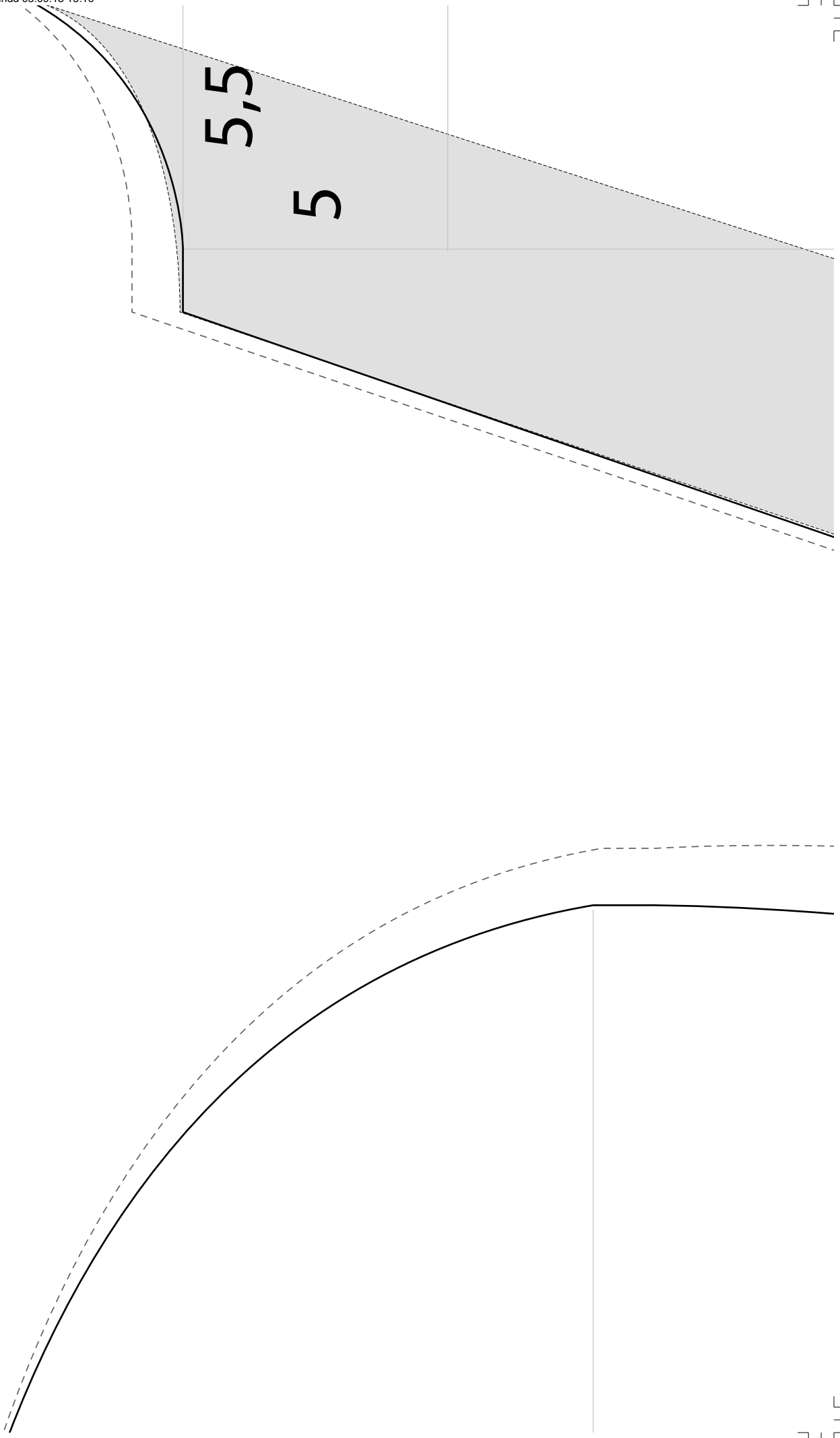




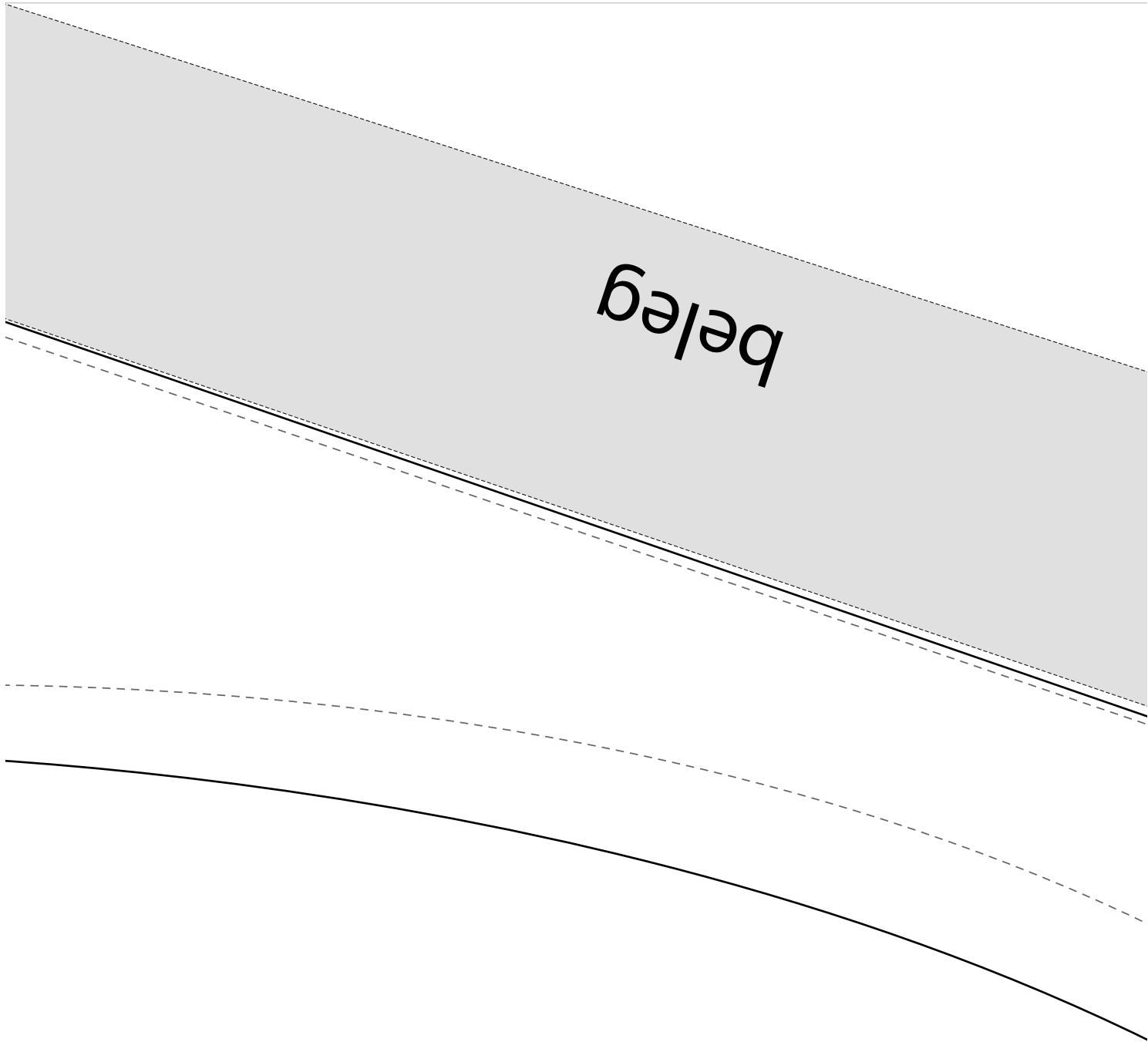
50

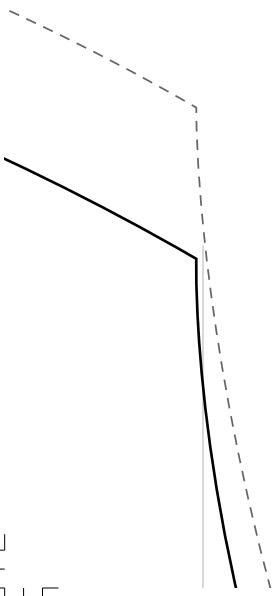
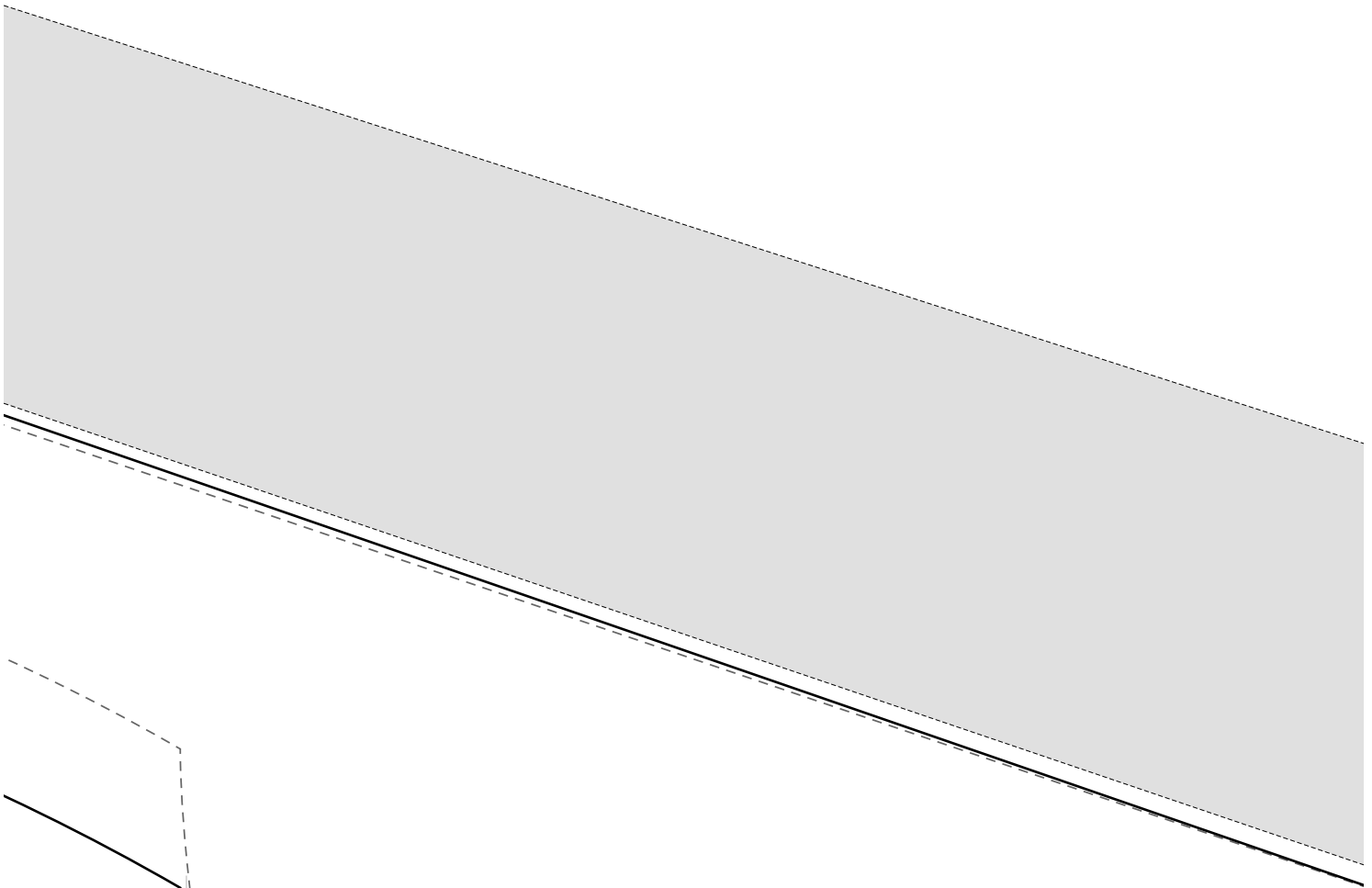


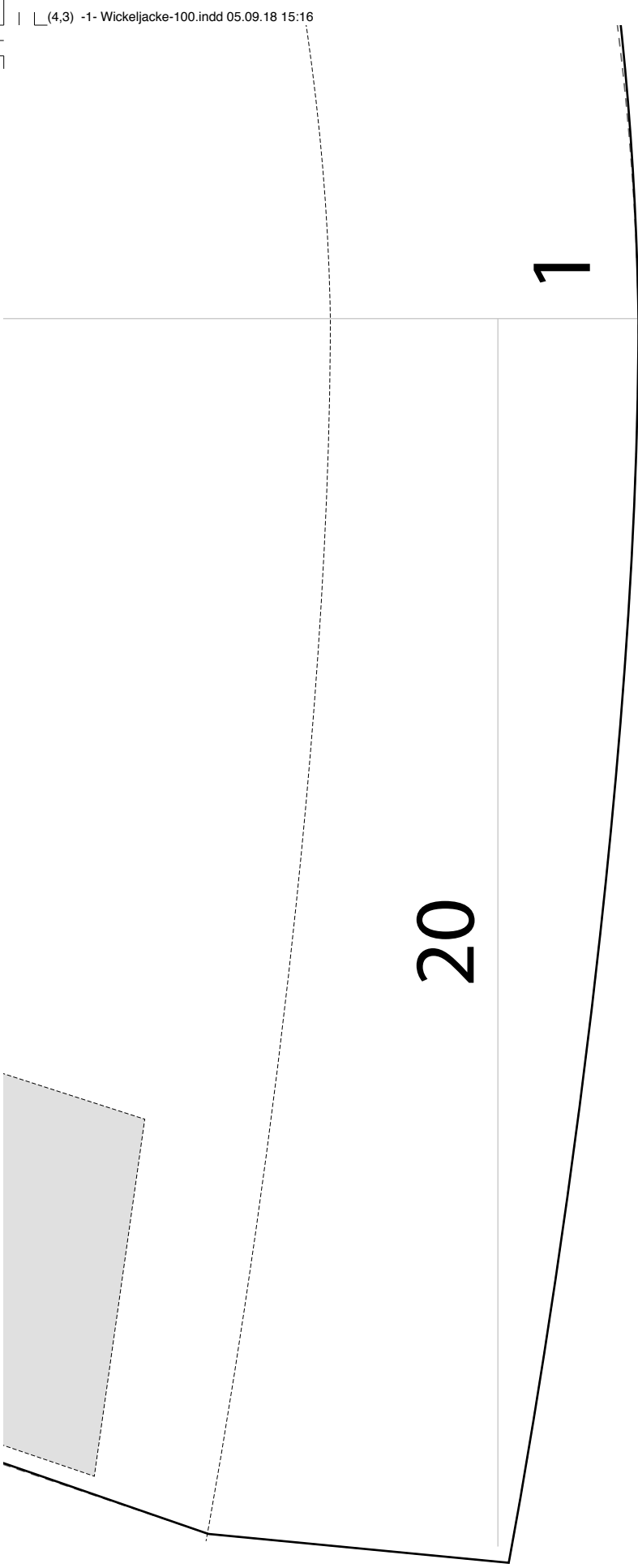




53,5

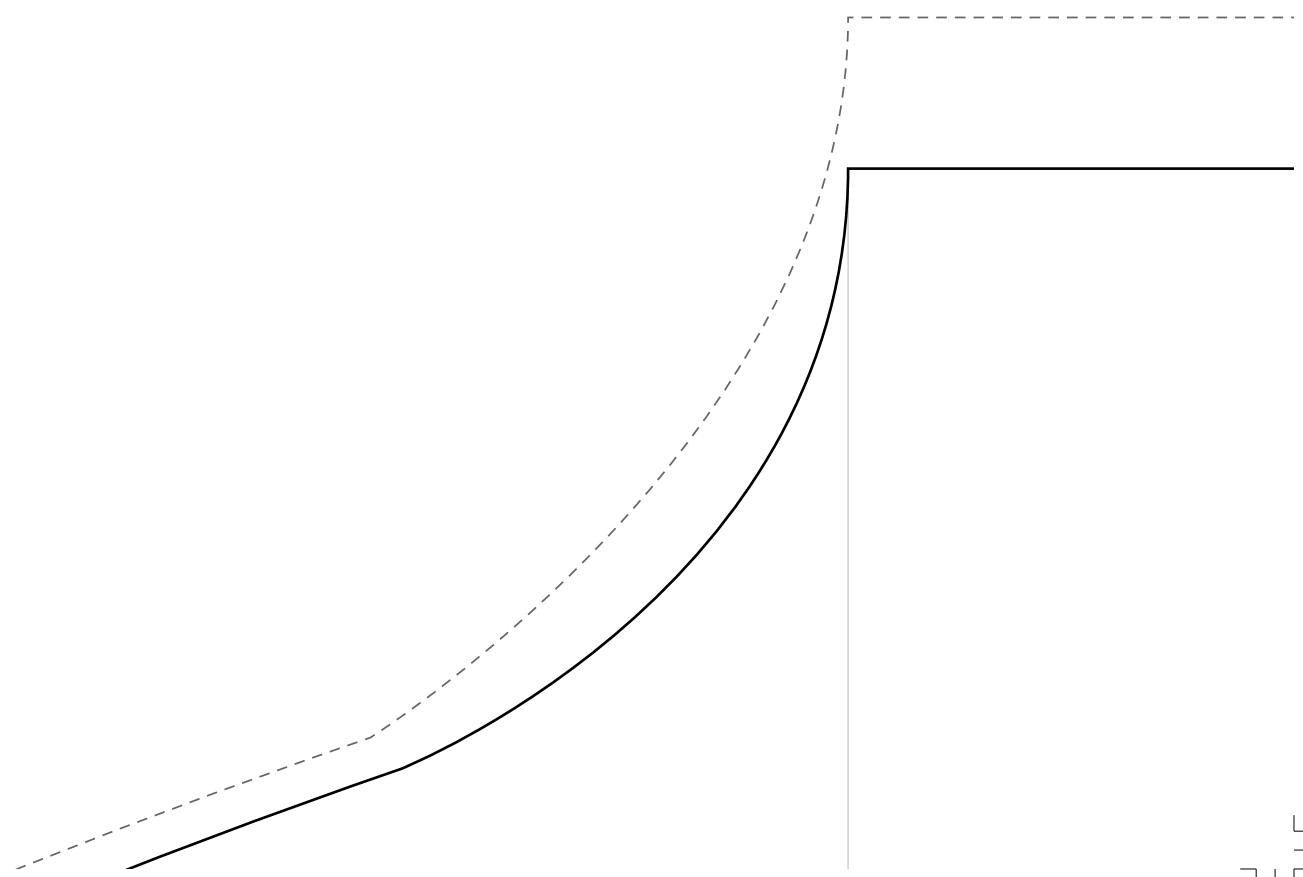






Vorderteil

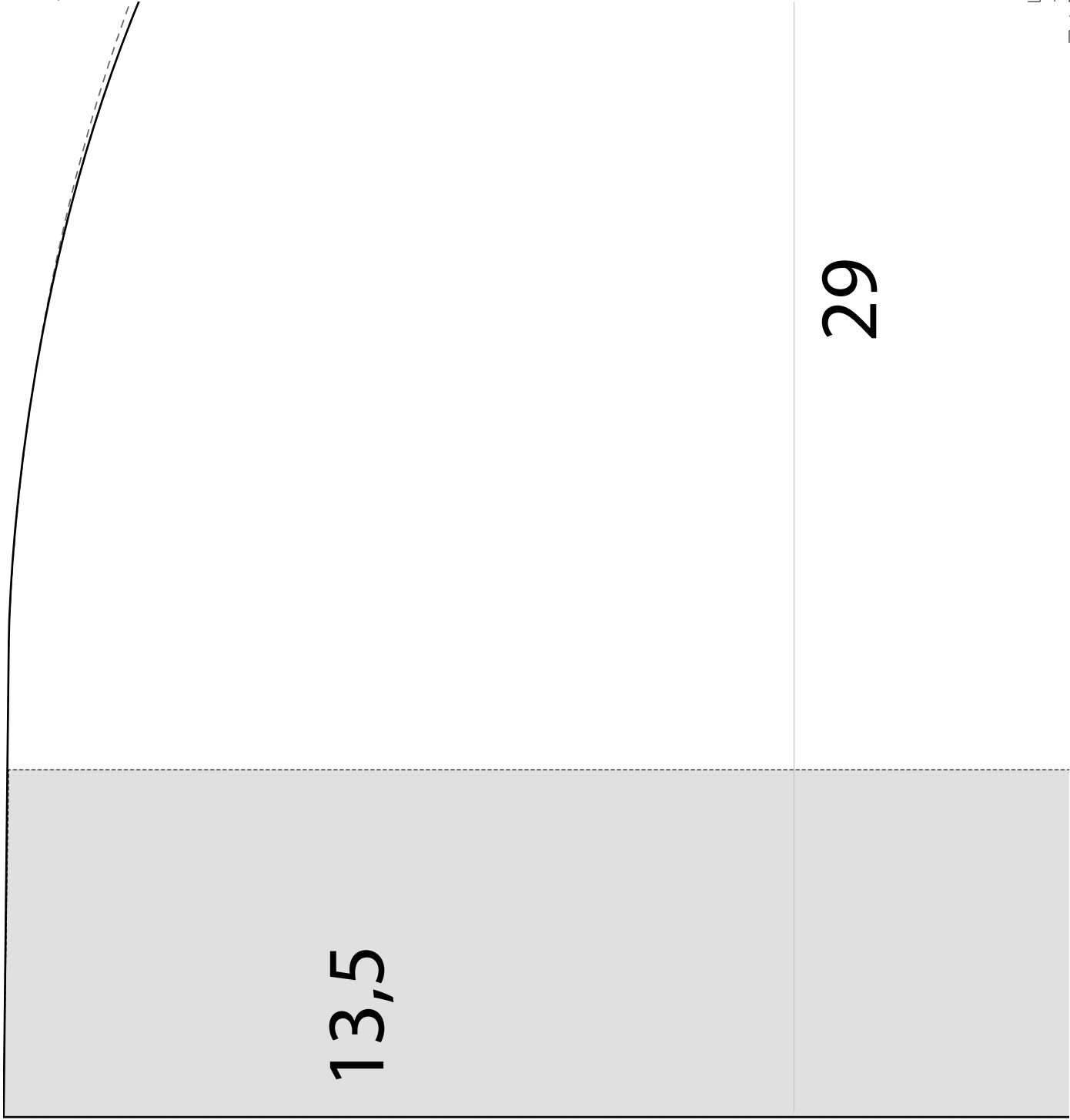






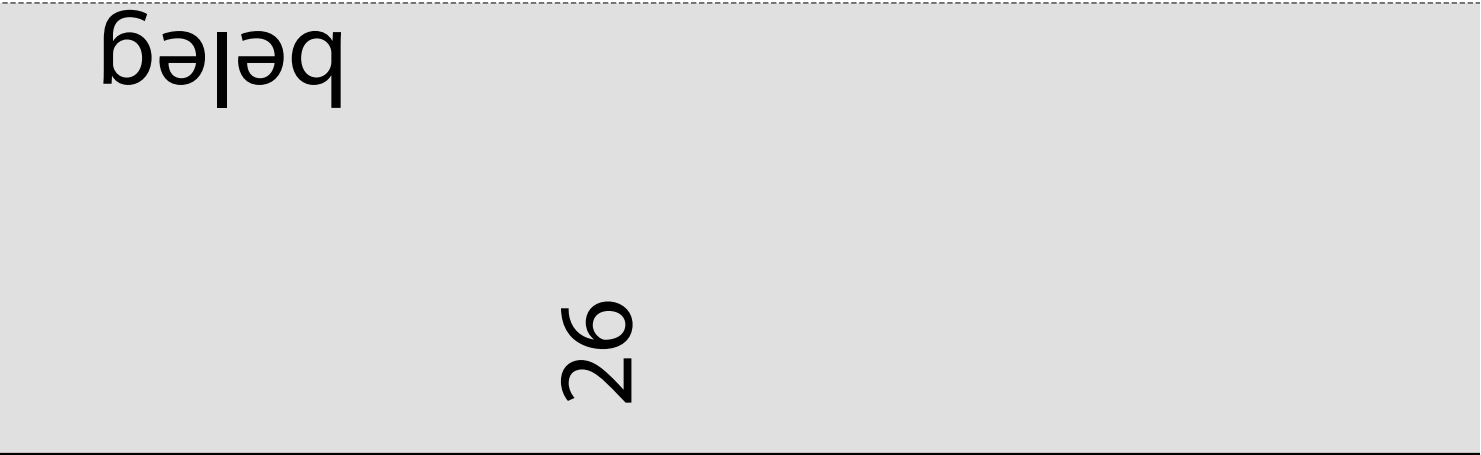








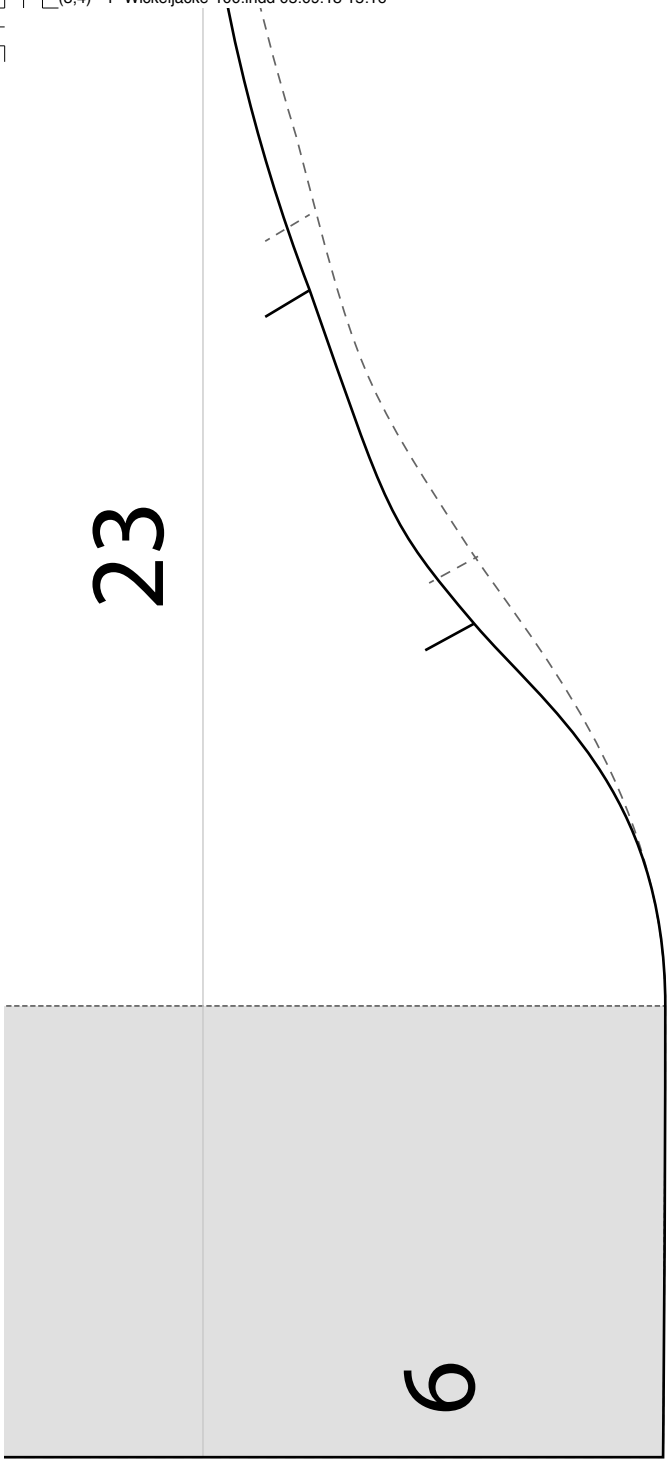
Fadenlauf



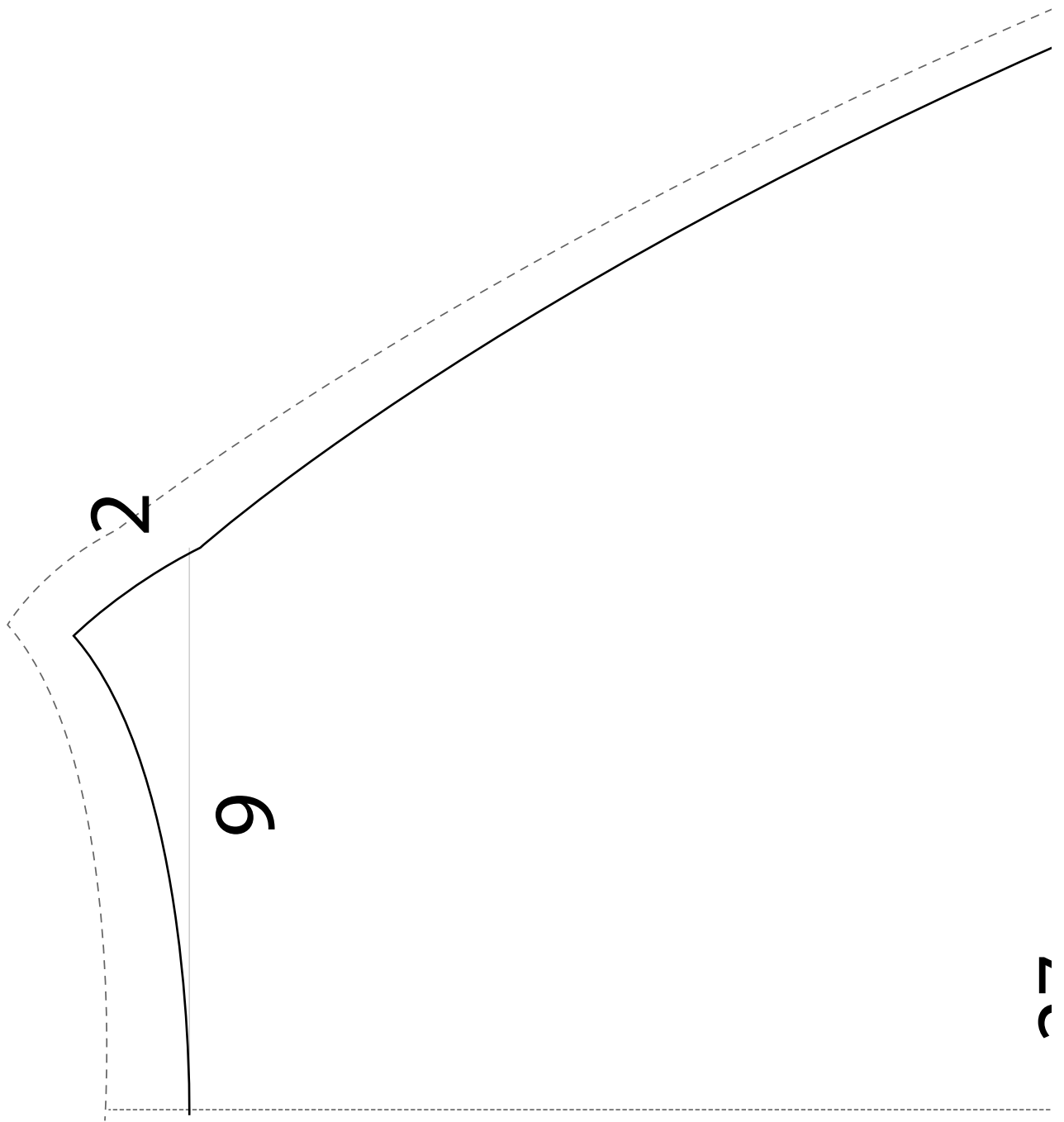
beleg

26



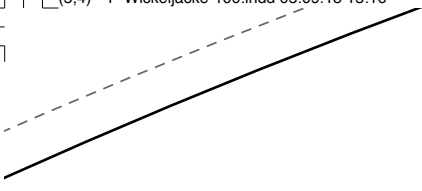


Kapuze



10

27

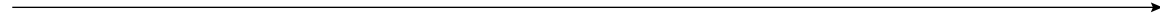


stoffb

28



Fadenlauf



Druck

33



5

Rückenteil

