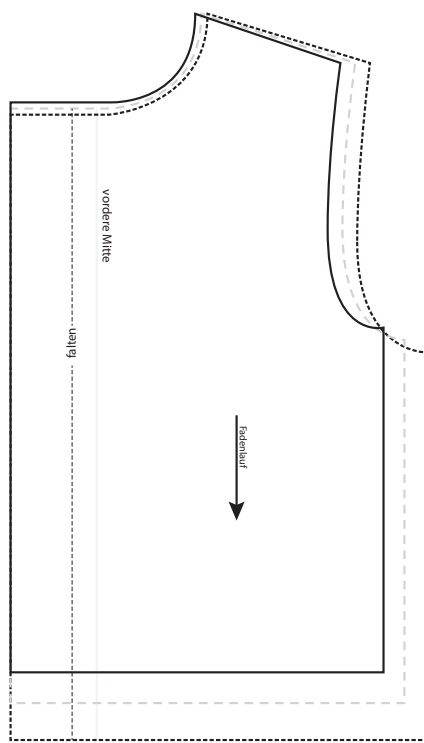
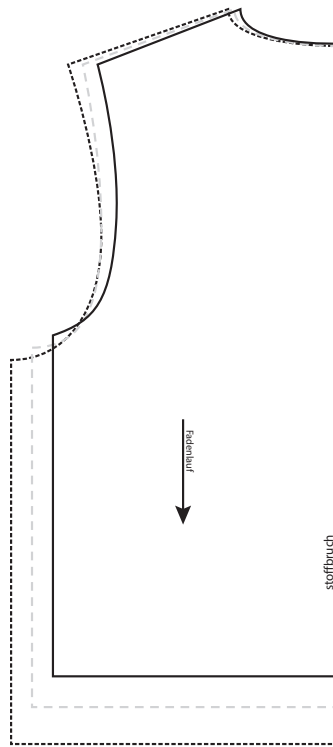


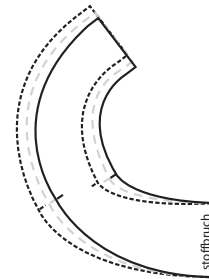
Größen
152 ———
164 - - - -
176 ······



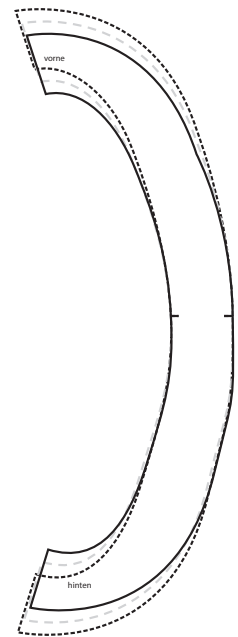
Vorderteil



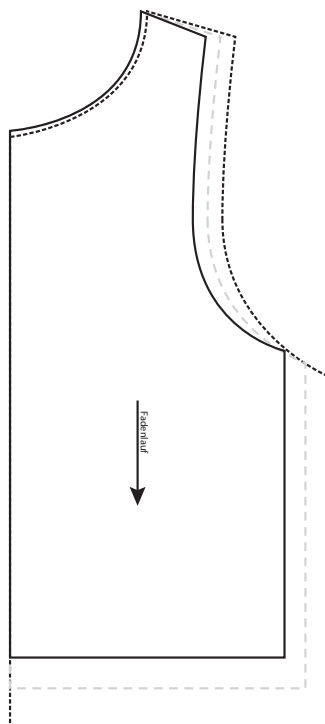
Rückenteil



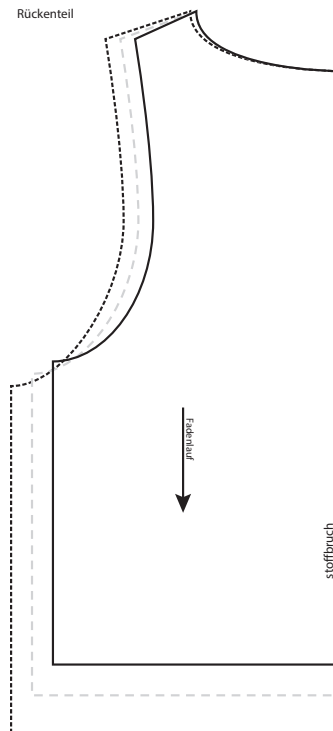
Halsbesatz



Ärmelbesatz



Futter-Vorderteil



Futter-Rückenteil



Saumblende

Initiative^{e.V.}
Handarbeit

Weste Jenny
Kollektion Kids
Größe 152 / 164 / 176

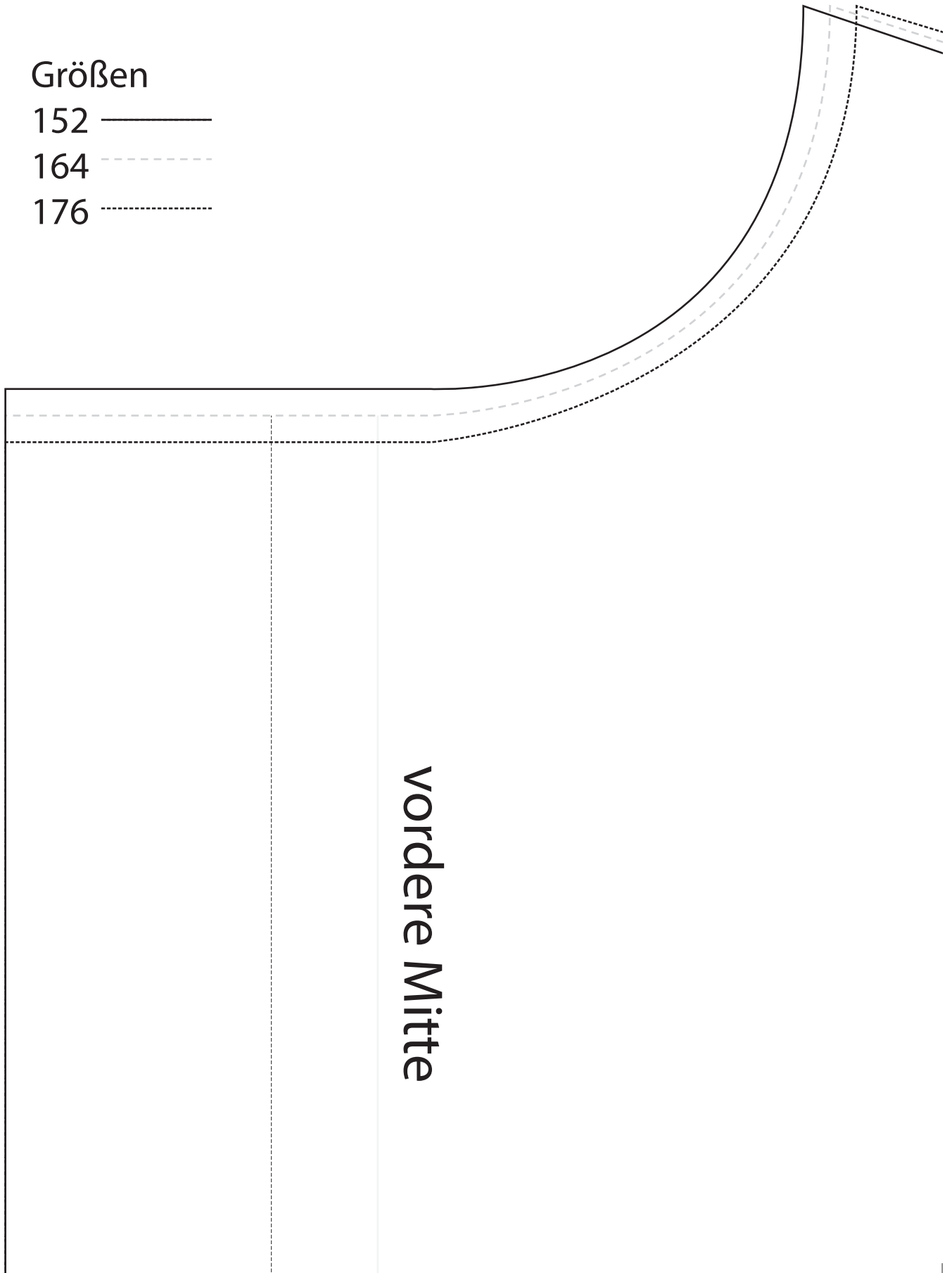
1cm

Größen

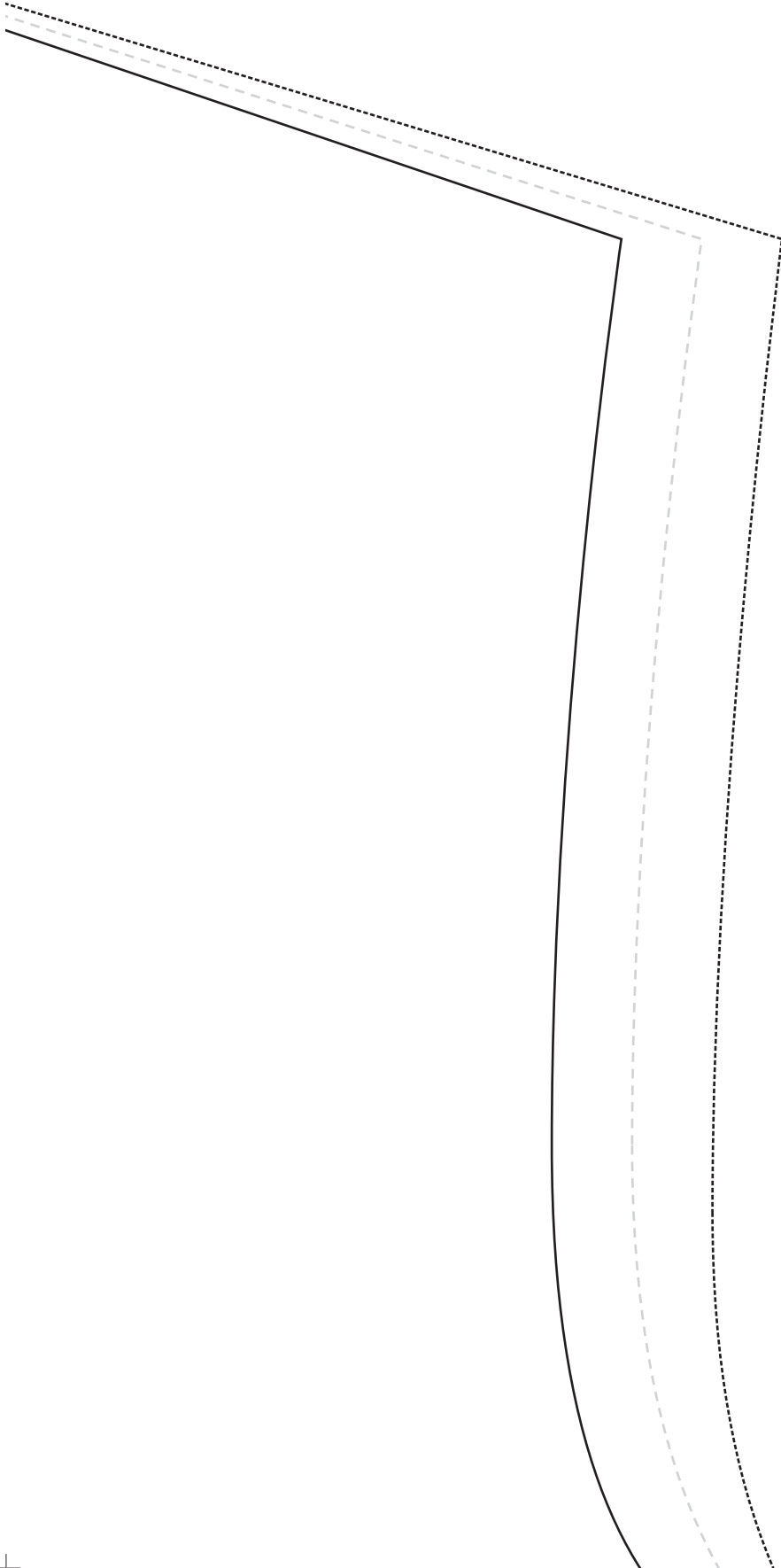
152 —————

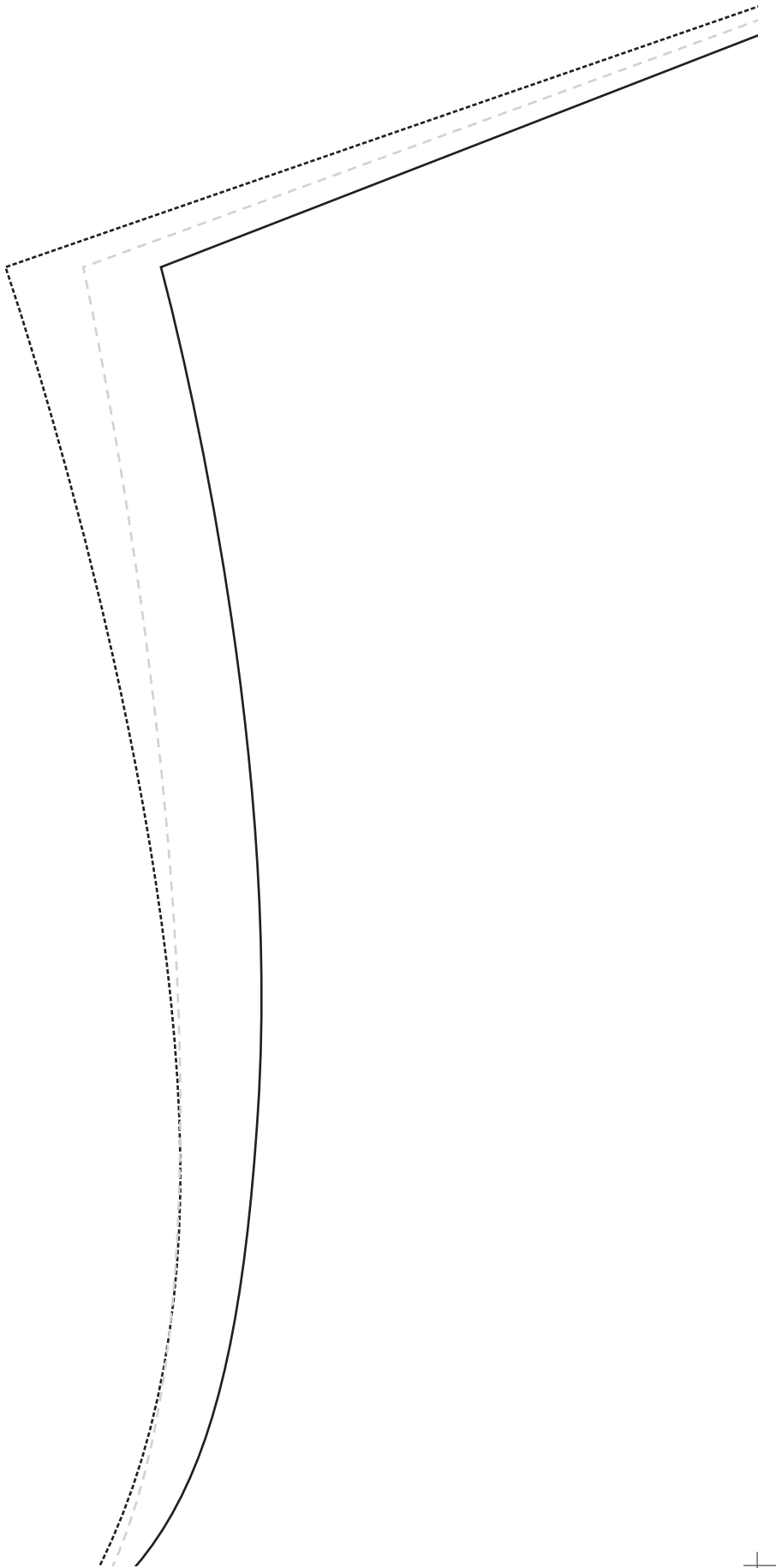
164 - - - - -

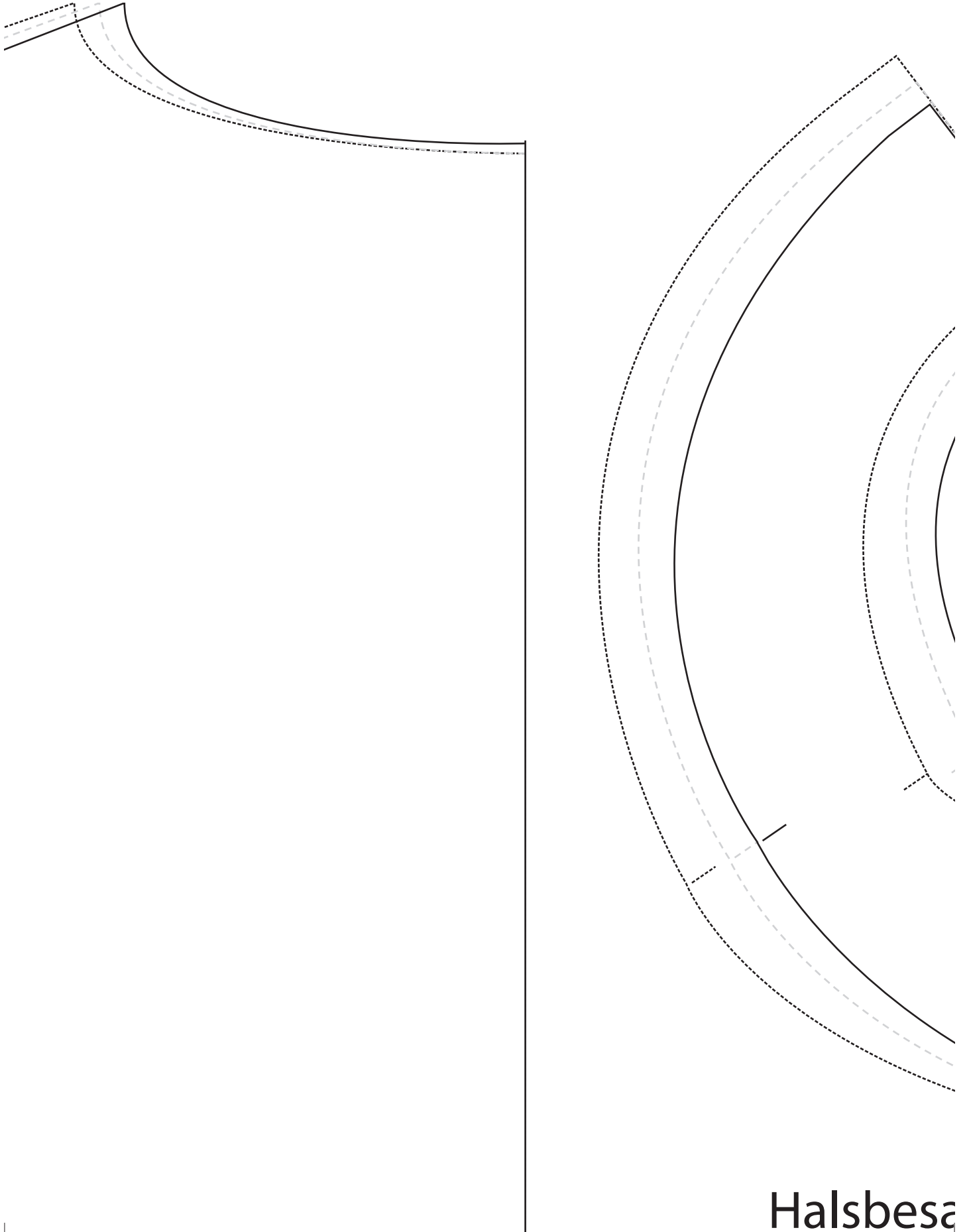
176 ······



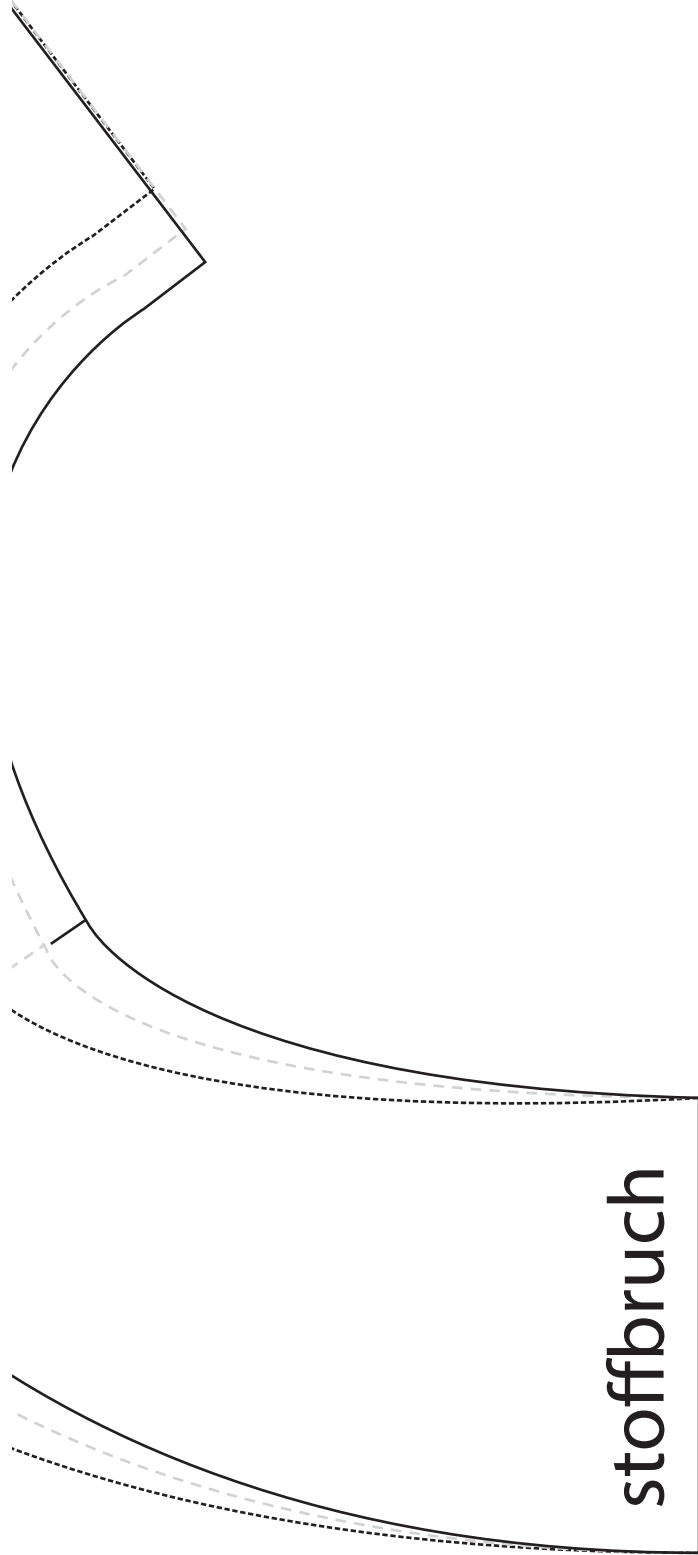
vordere Mitte







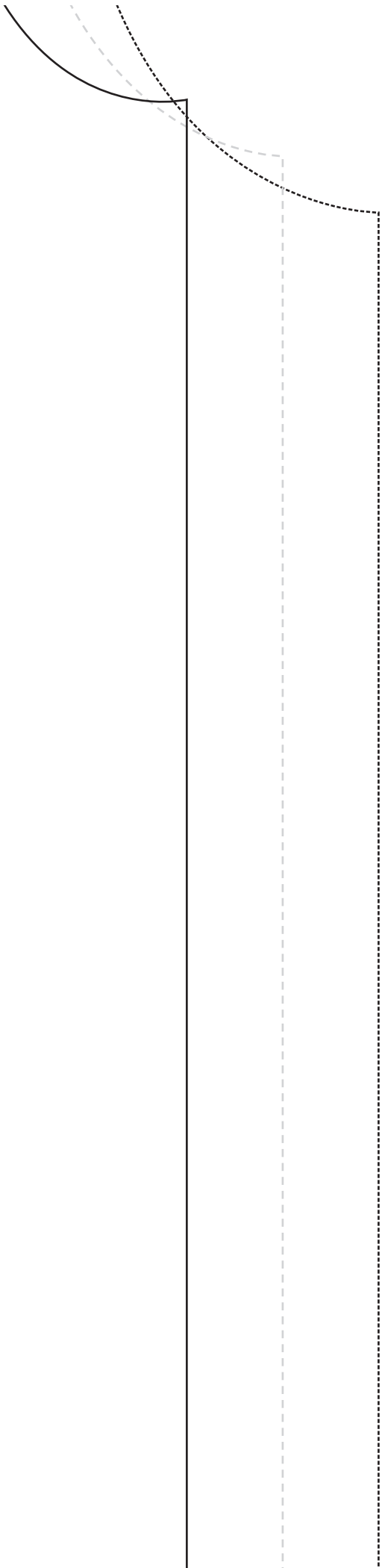
Halsbesa

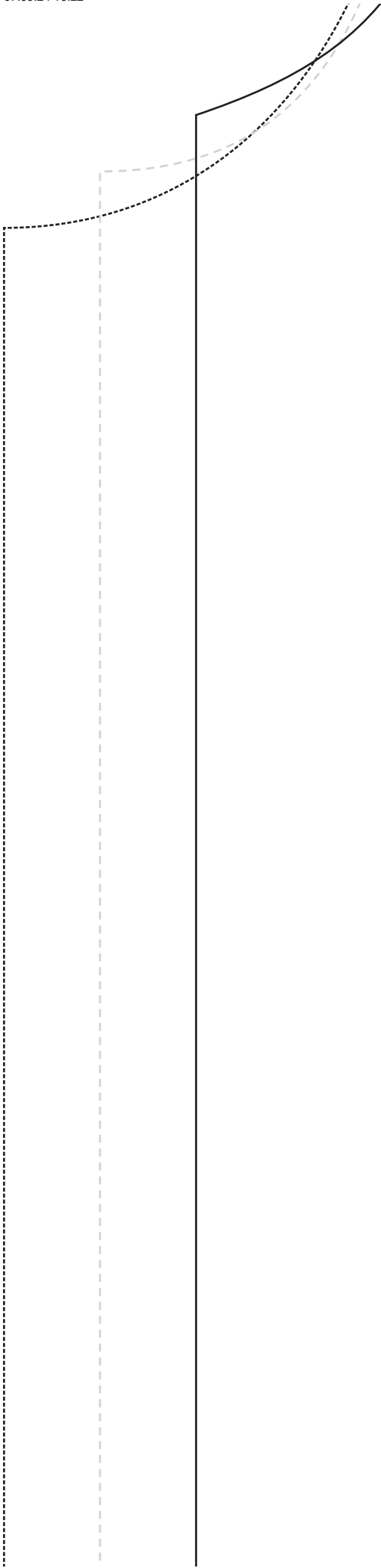


falten



Fadenlauf

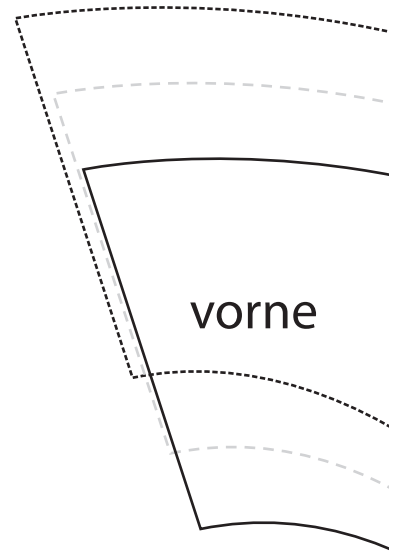


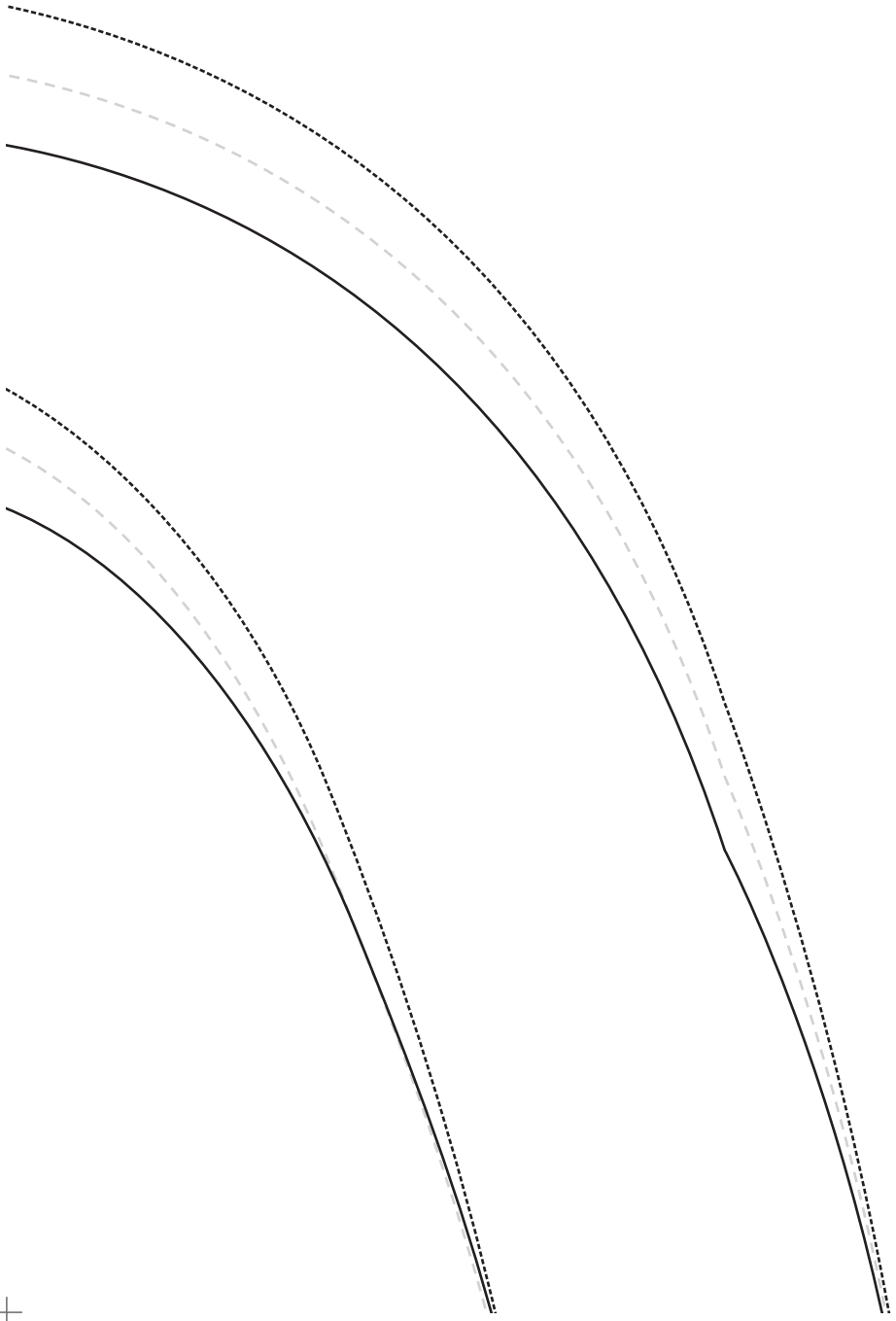


Fadenlauf



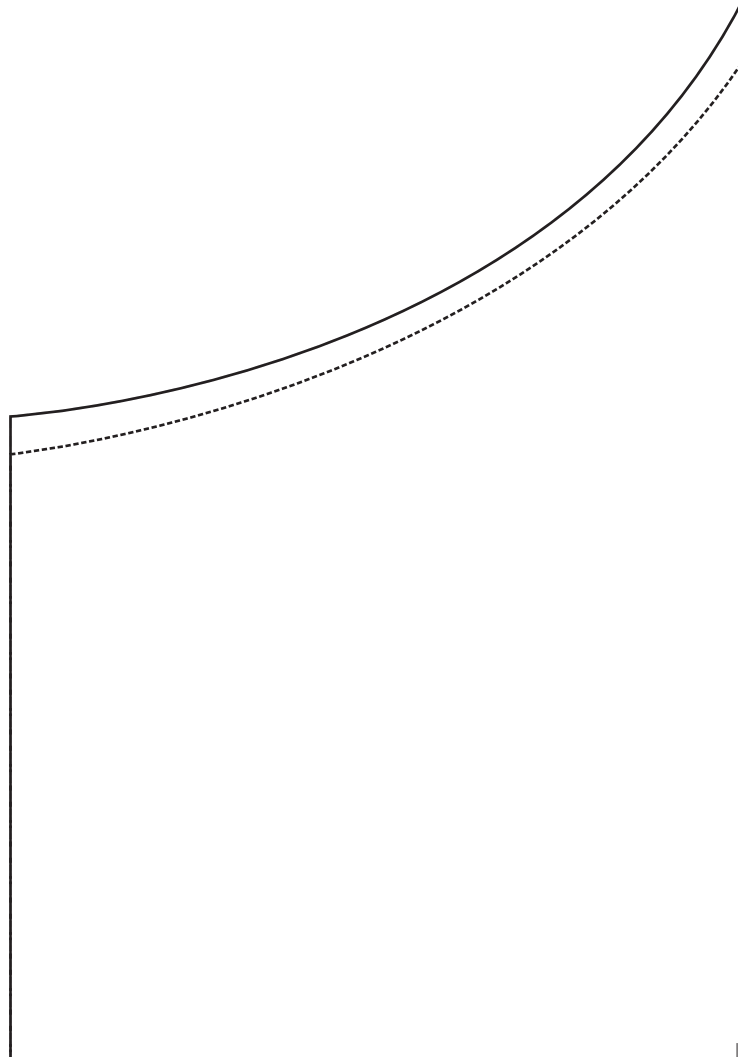
stoffbruch

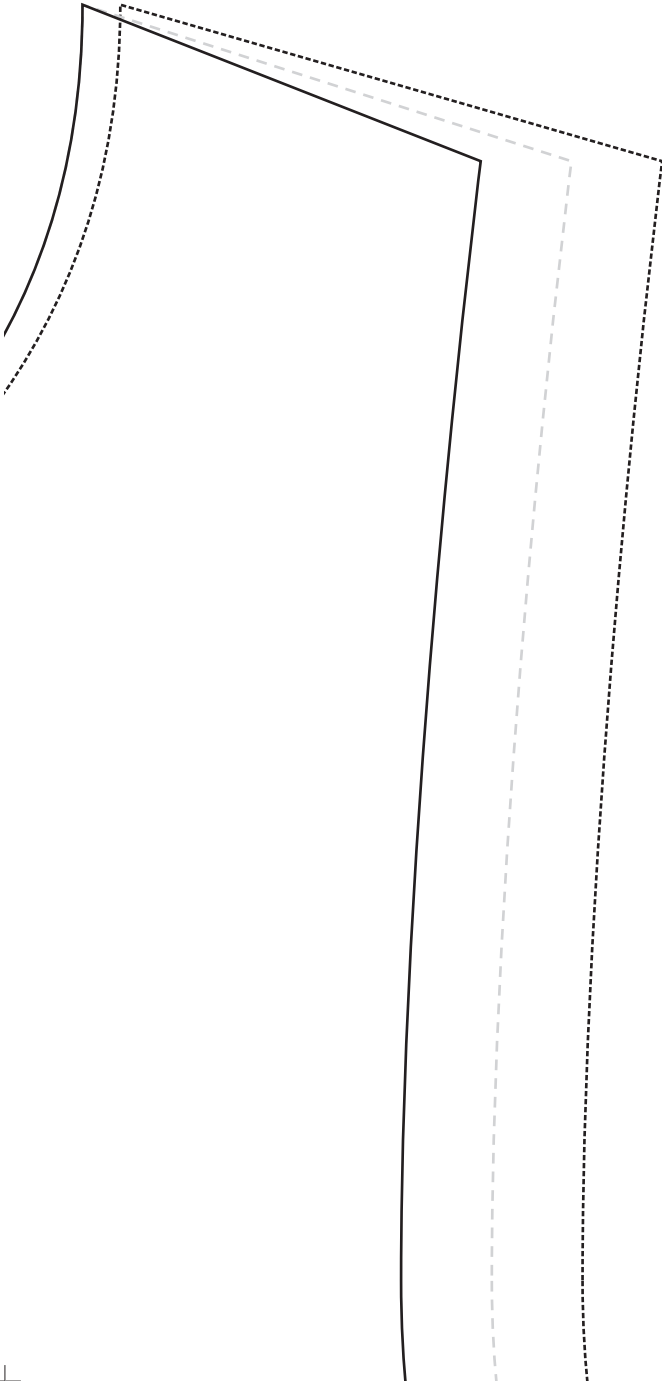






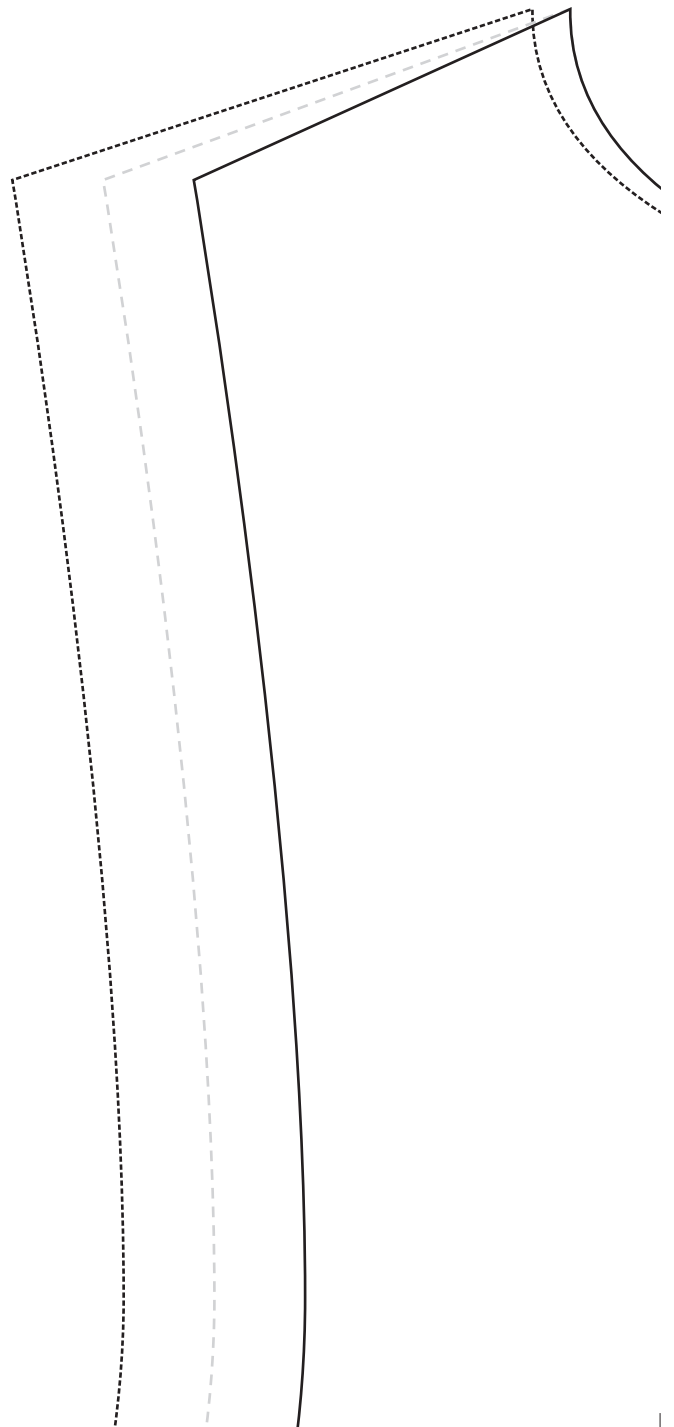
Vorderteil

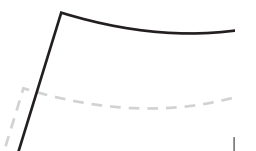
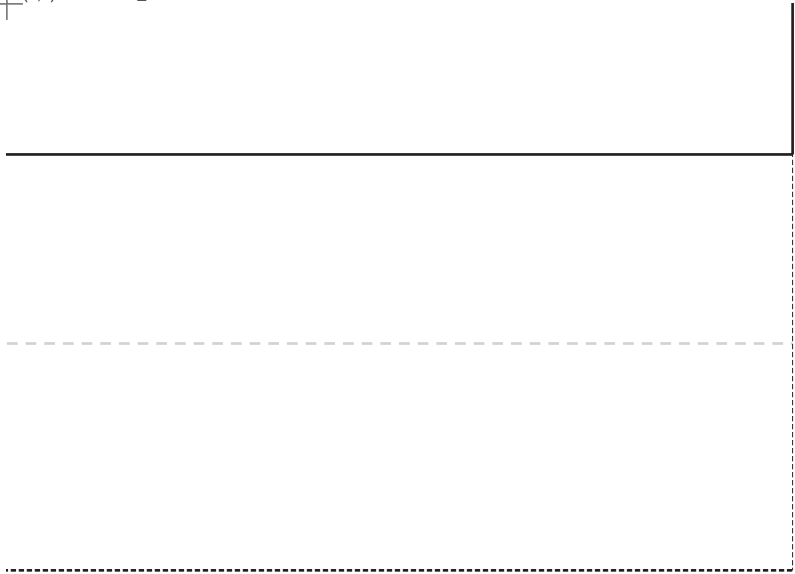


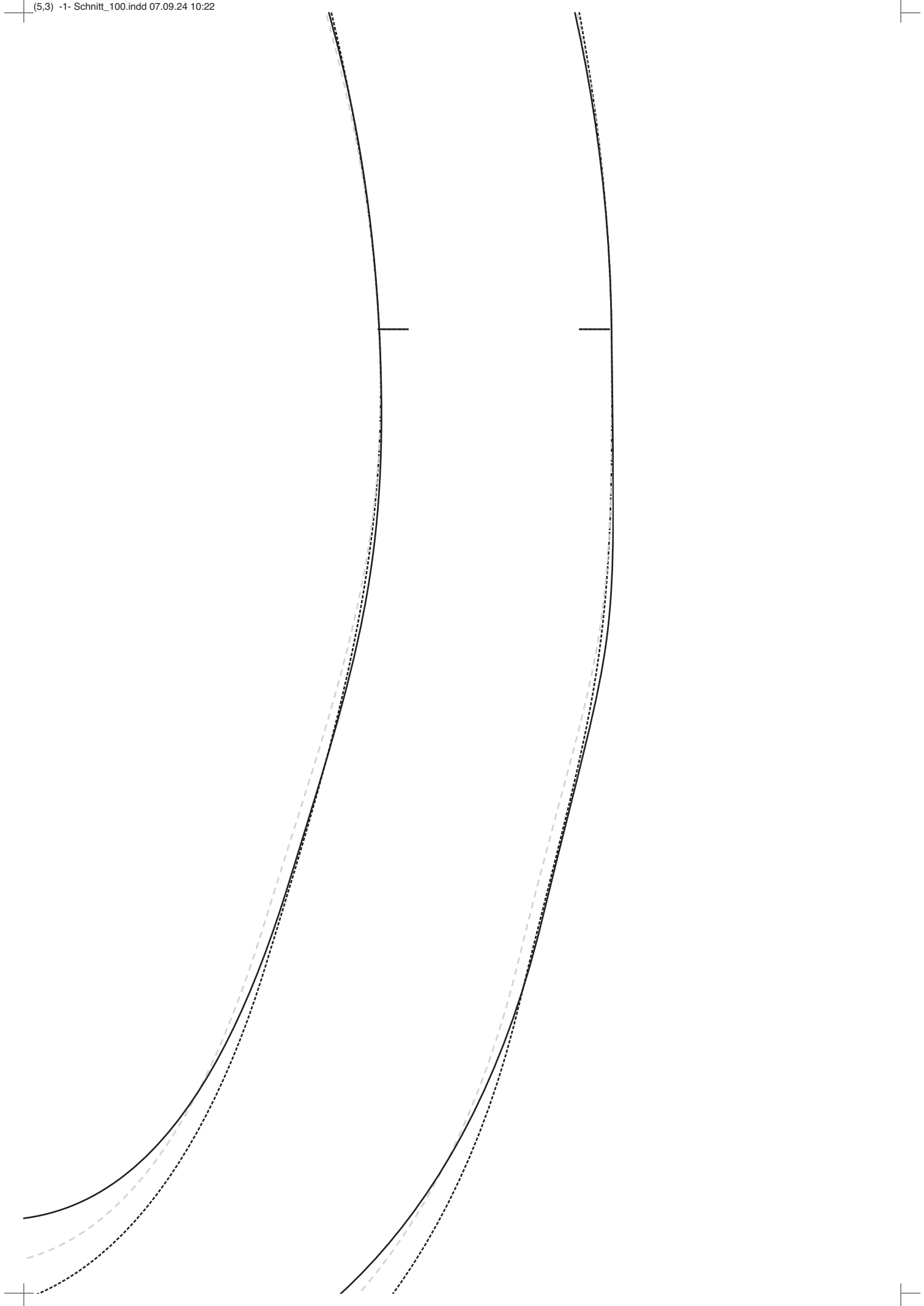




Rückenteil



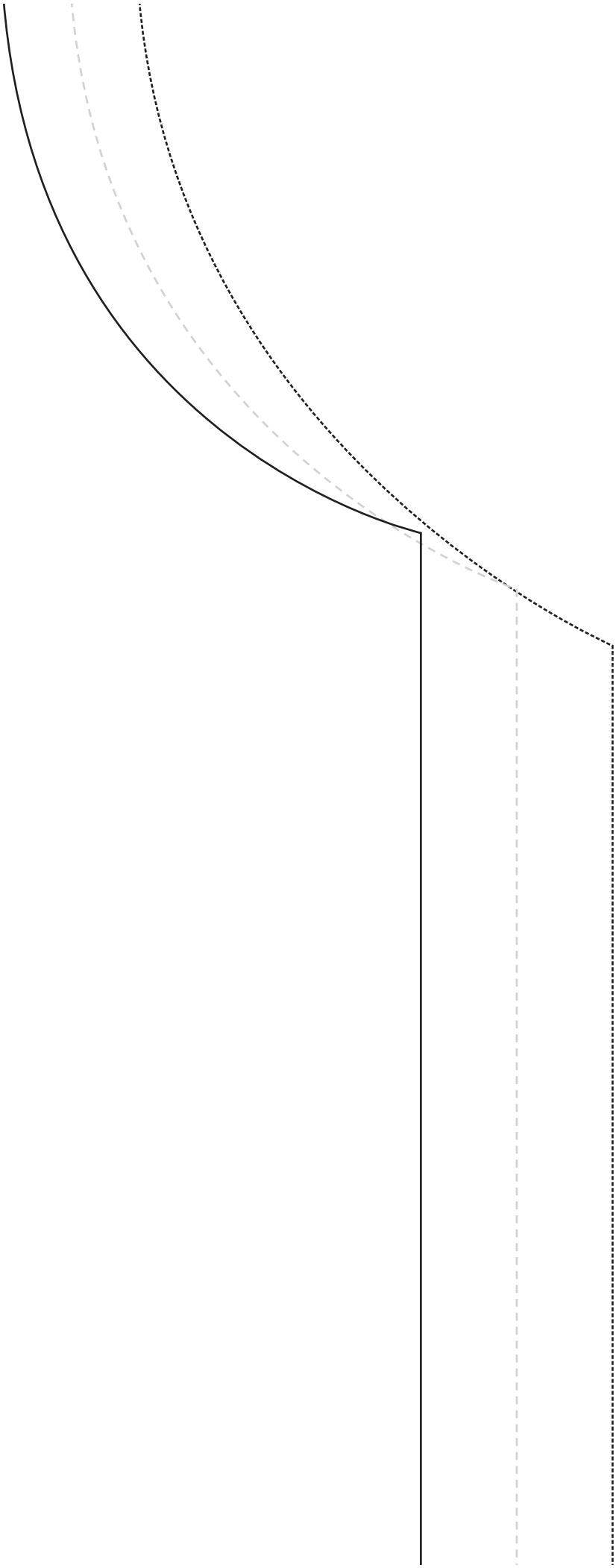


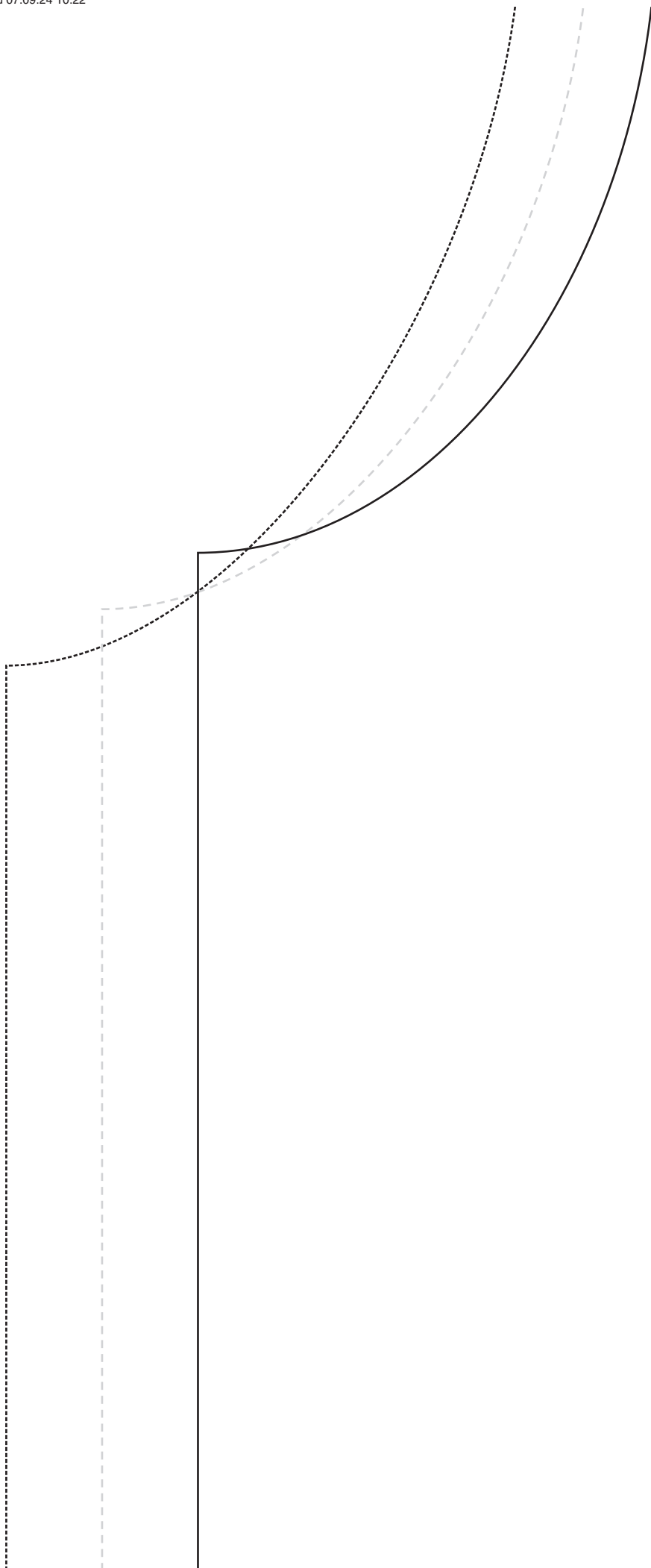






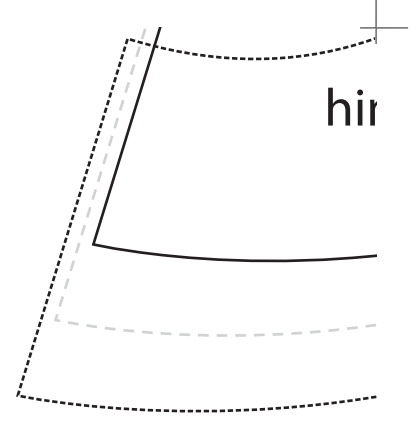
Fadenlauf





Fadenlauf

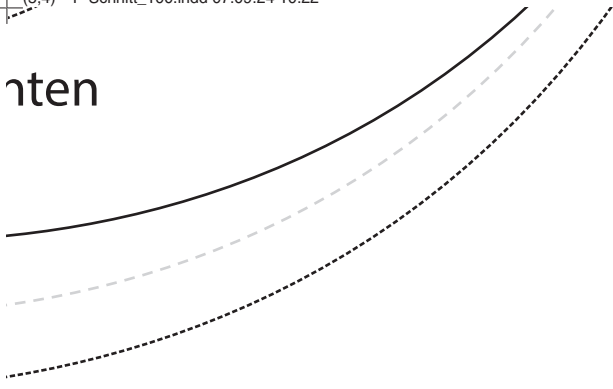
stoffbruch



Ärmelbesatz



arten

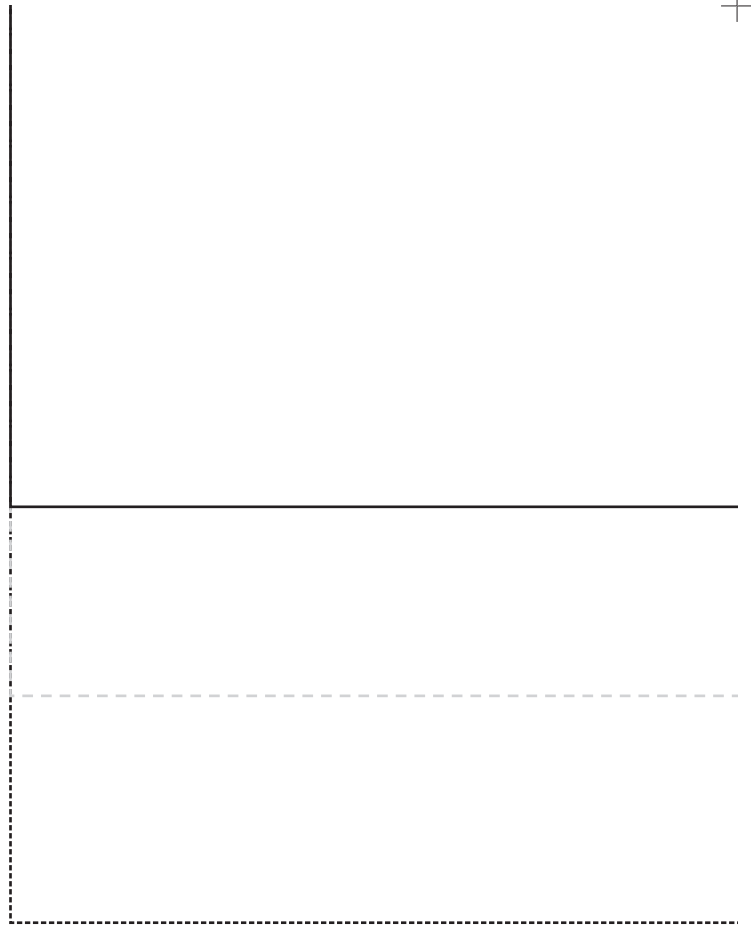


z

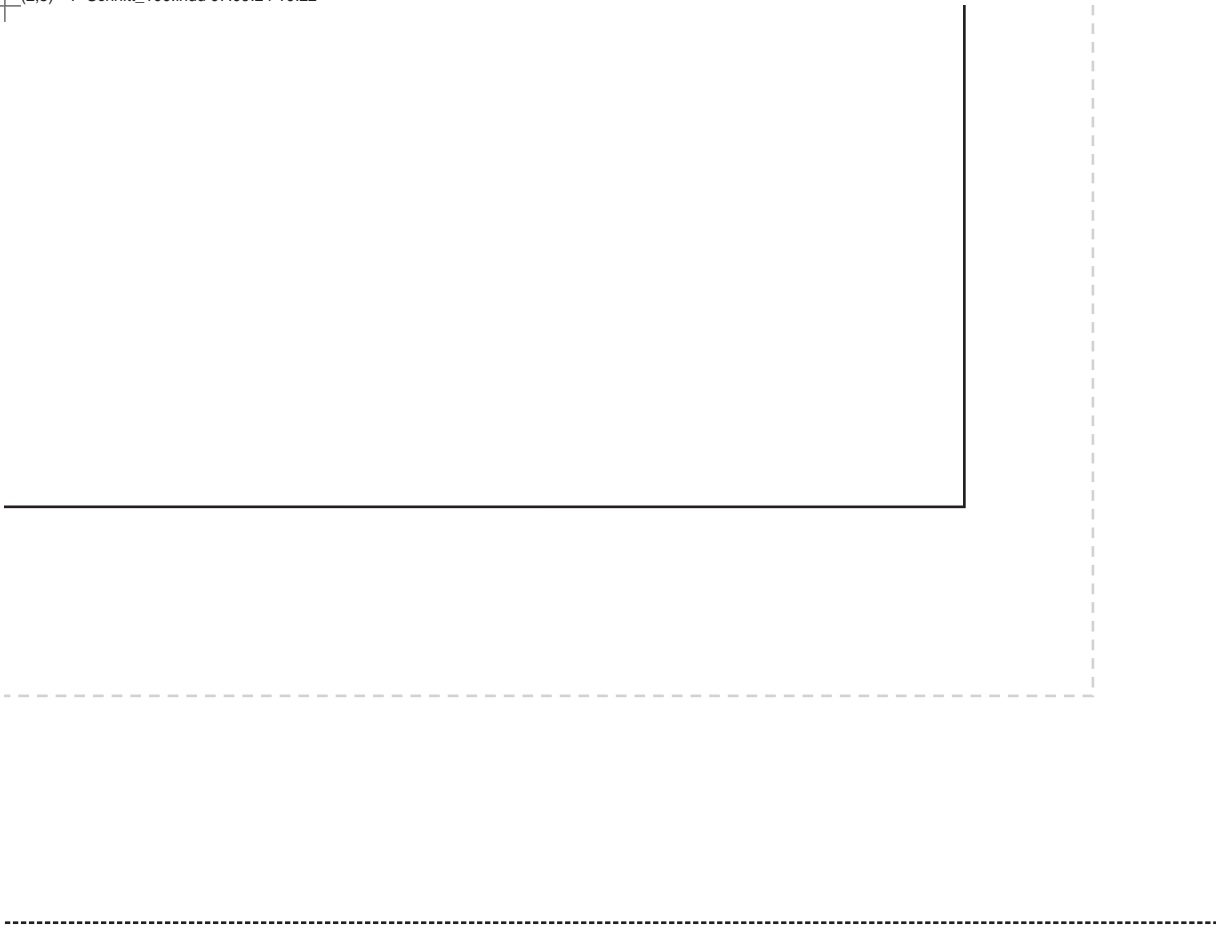


falten





Futter-Vorderteil





Futter-Rückenteil





