

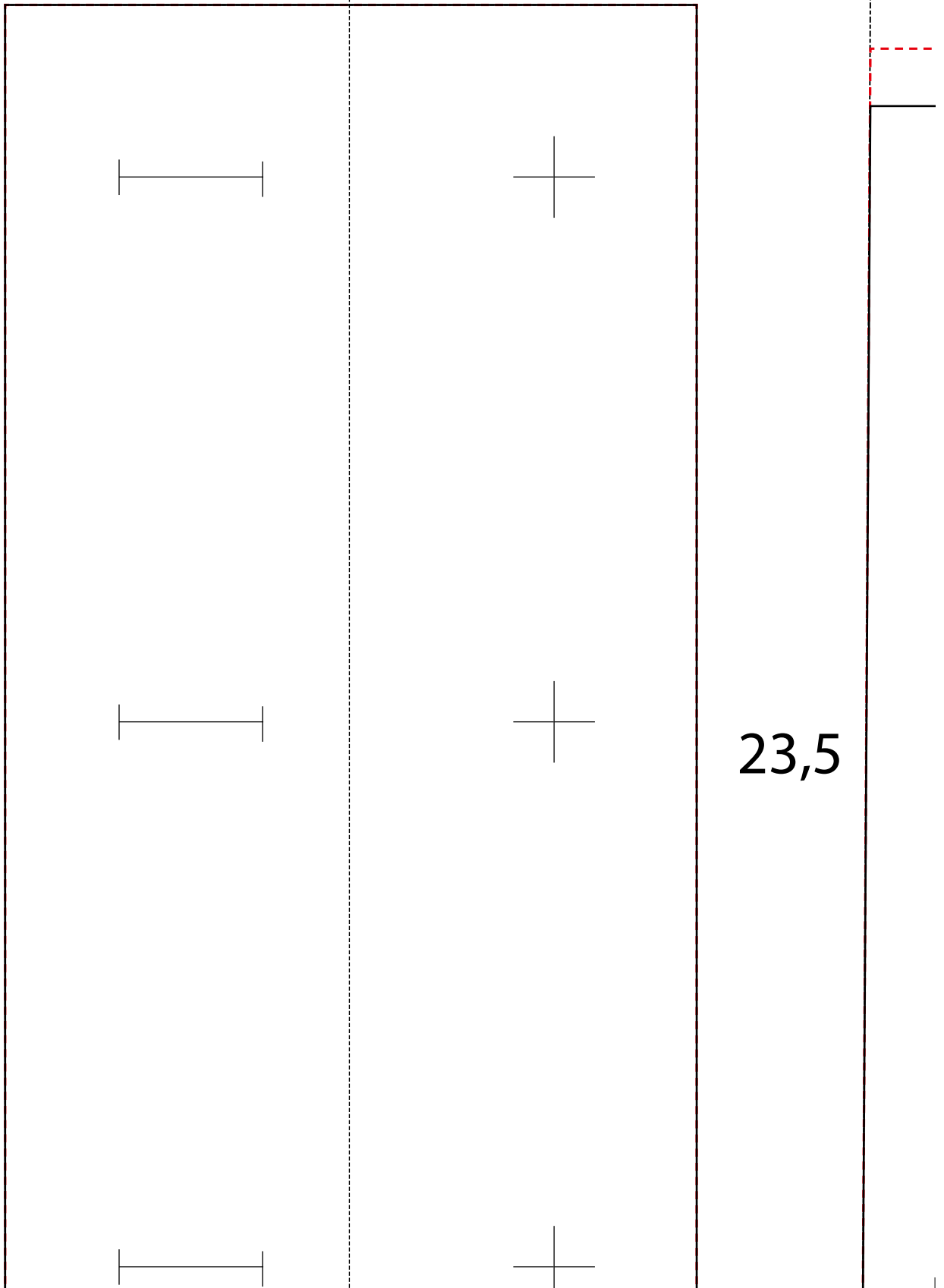


Initiative<sup>e.V.</sup>  
Handarbeit

Trägerkleid aus Wolle  
Kollektion N°12  
Größe 36-38 /40-42 /44

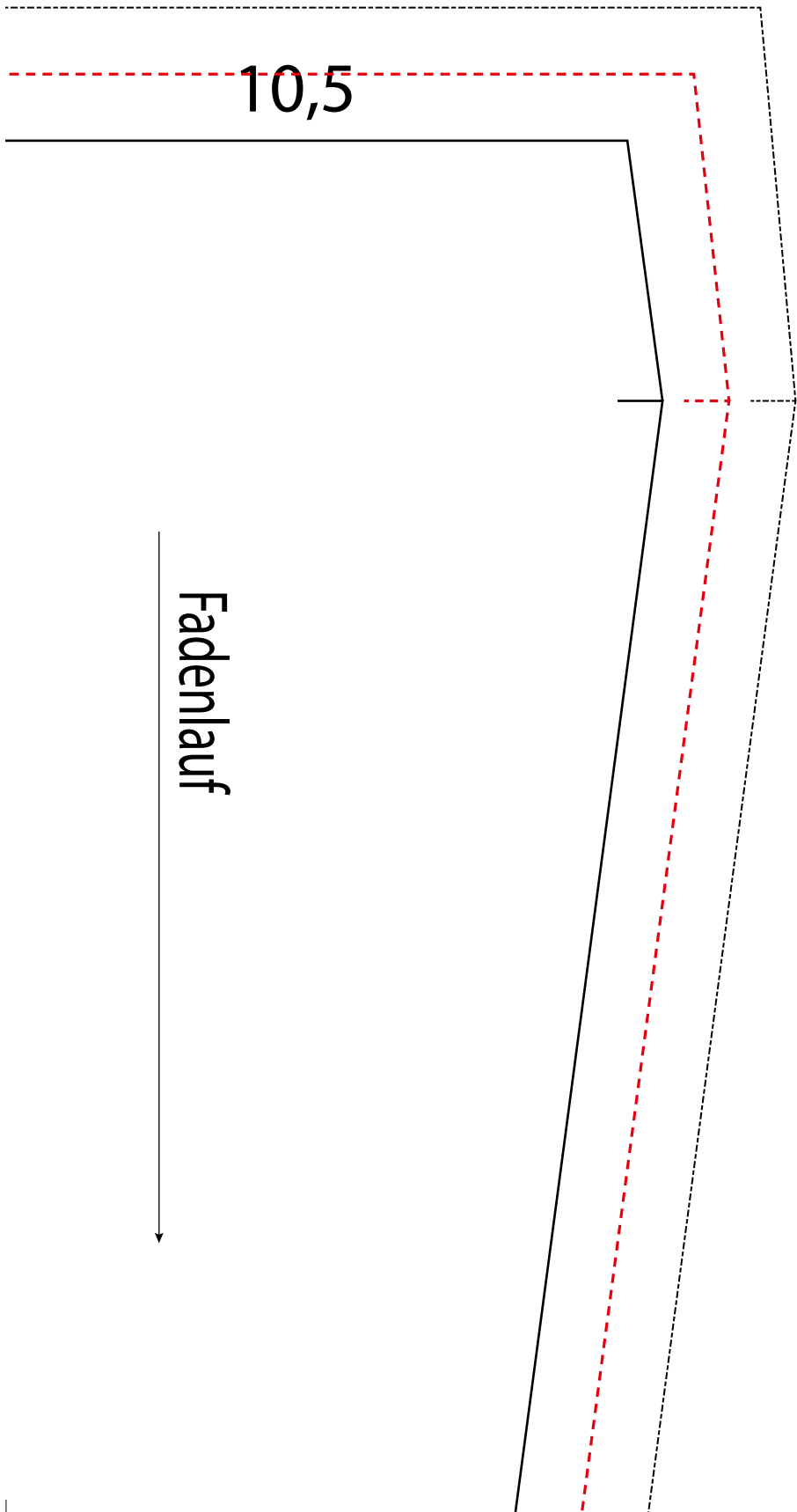
1cm

12



23,5





Fadenlauf

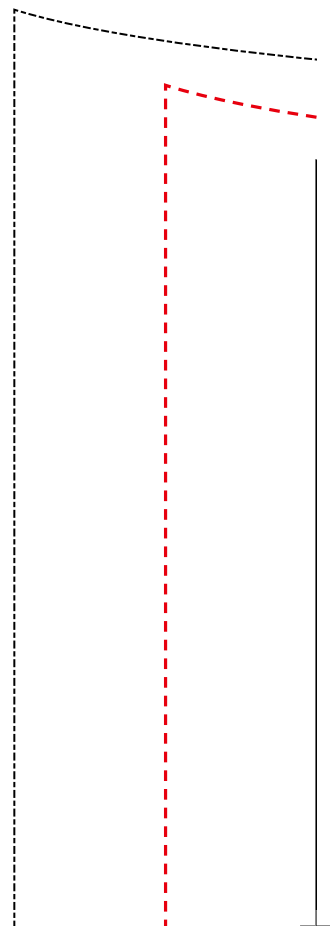
10,5

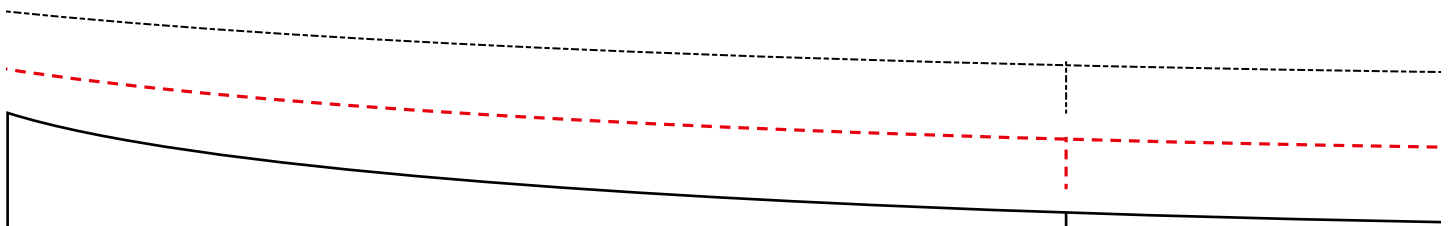
Größe

36/38 ———

40/42 - - - - -

44 ·····

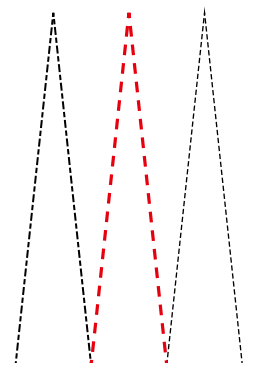


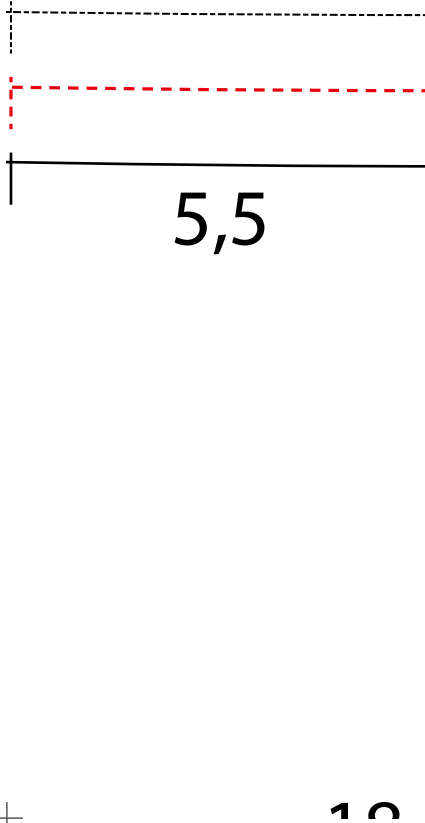


24,5

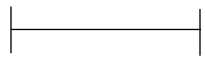
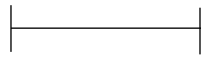
Träger

19,5

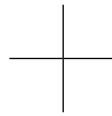
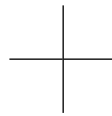








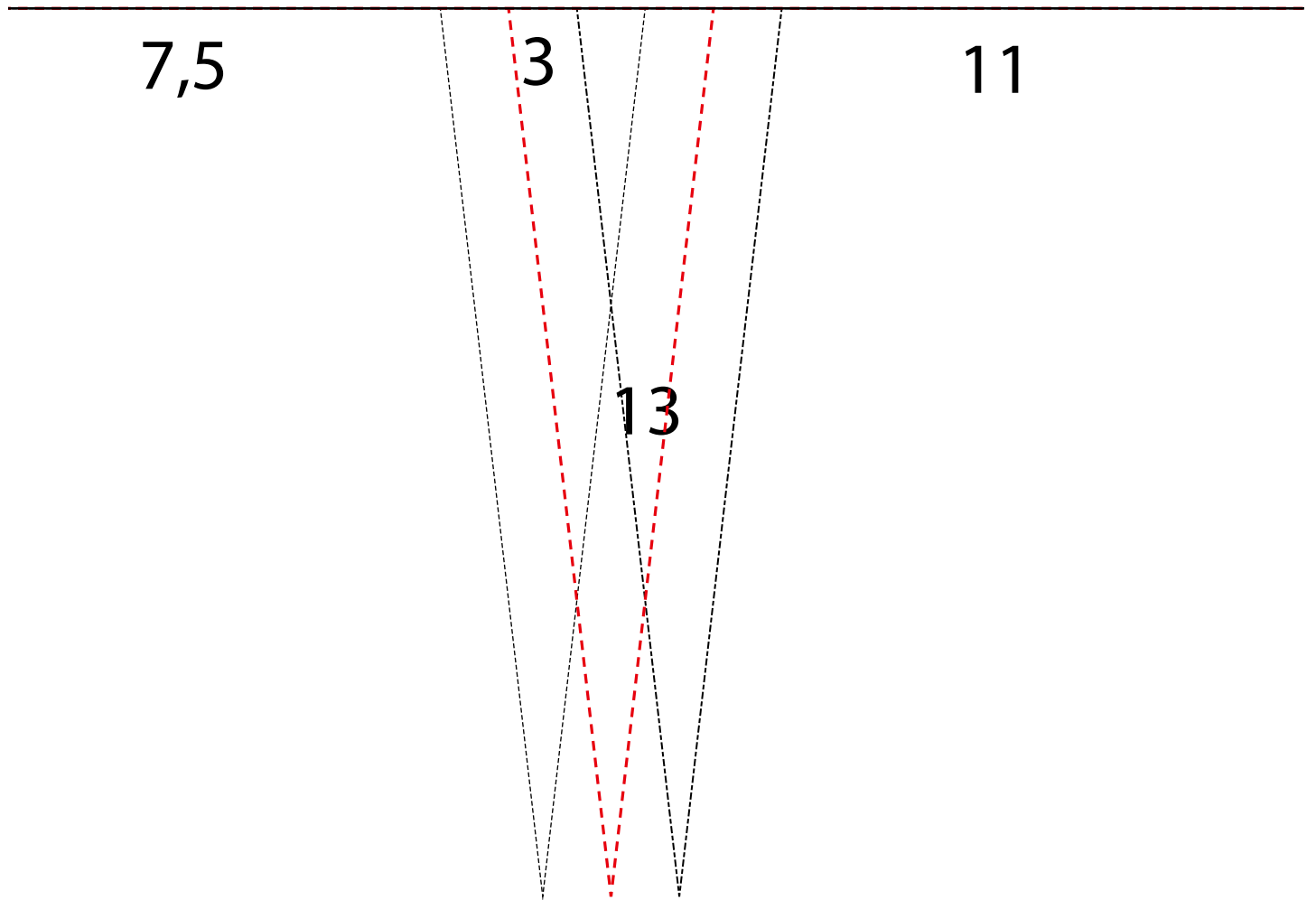
100,5



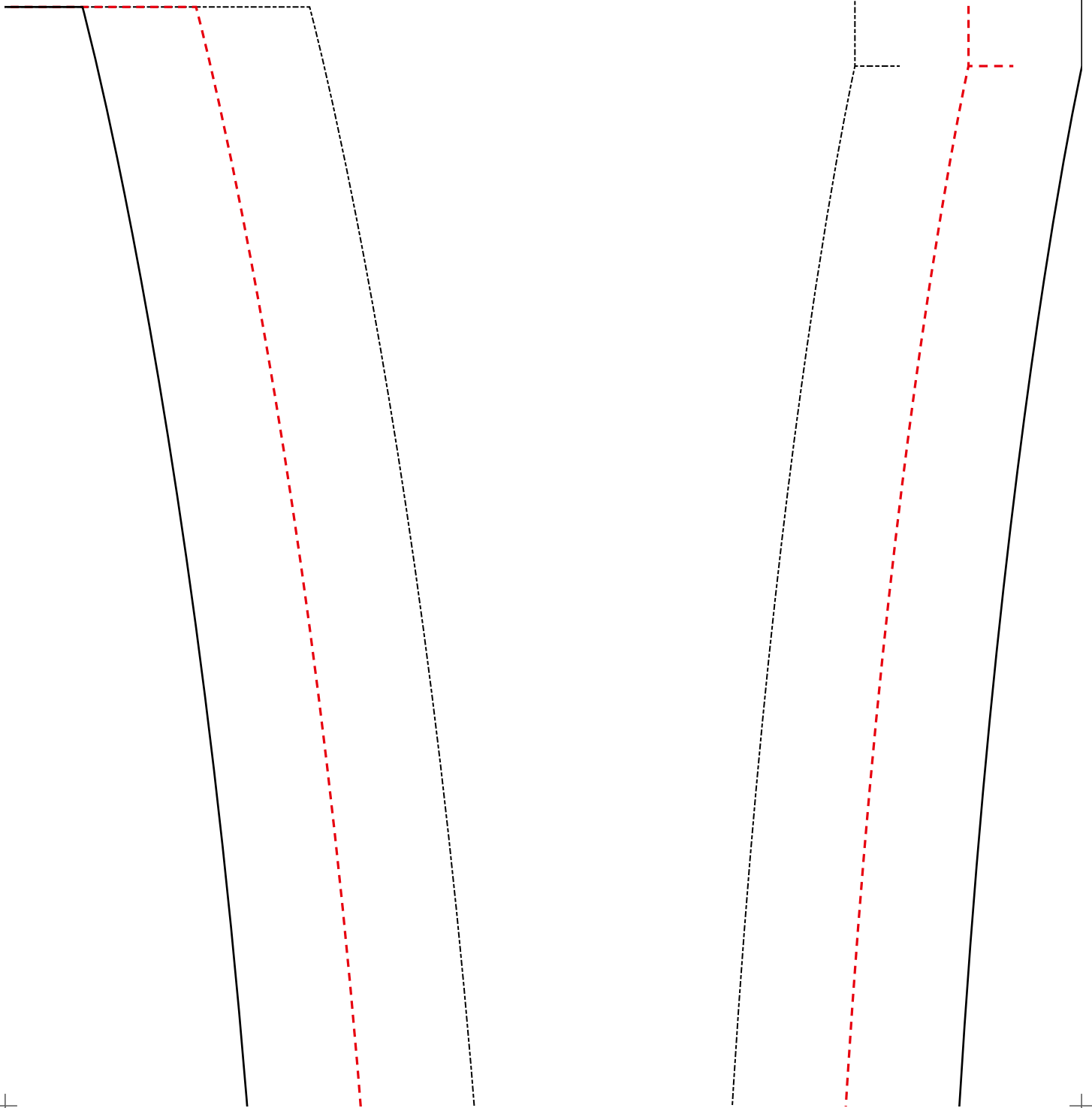
Mit

8,5  
Taille

Stelteil





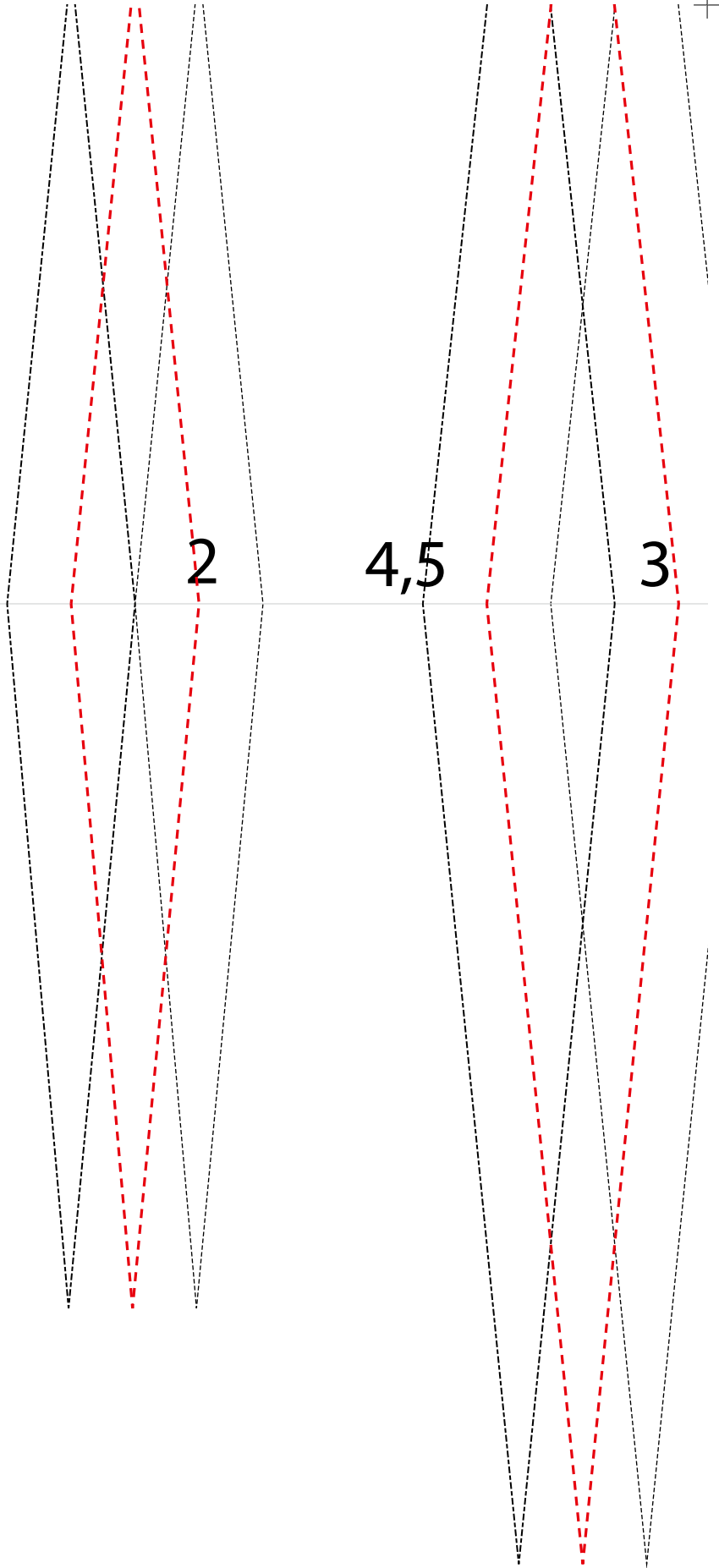


Taille 10

2

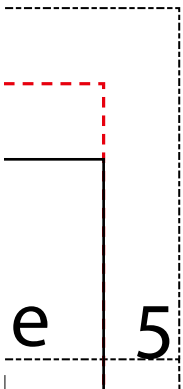
4,5

3



5

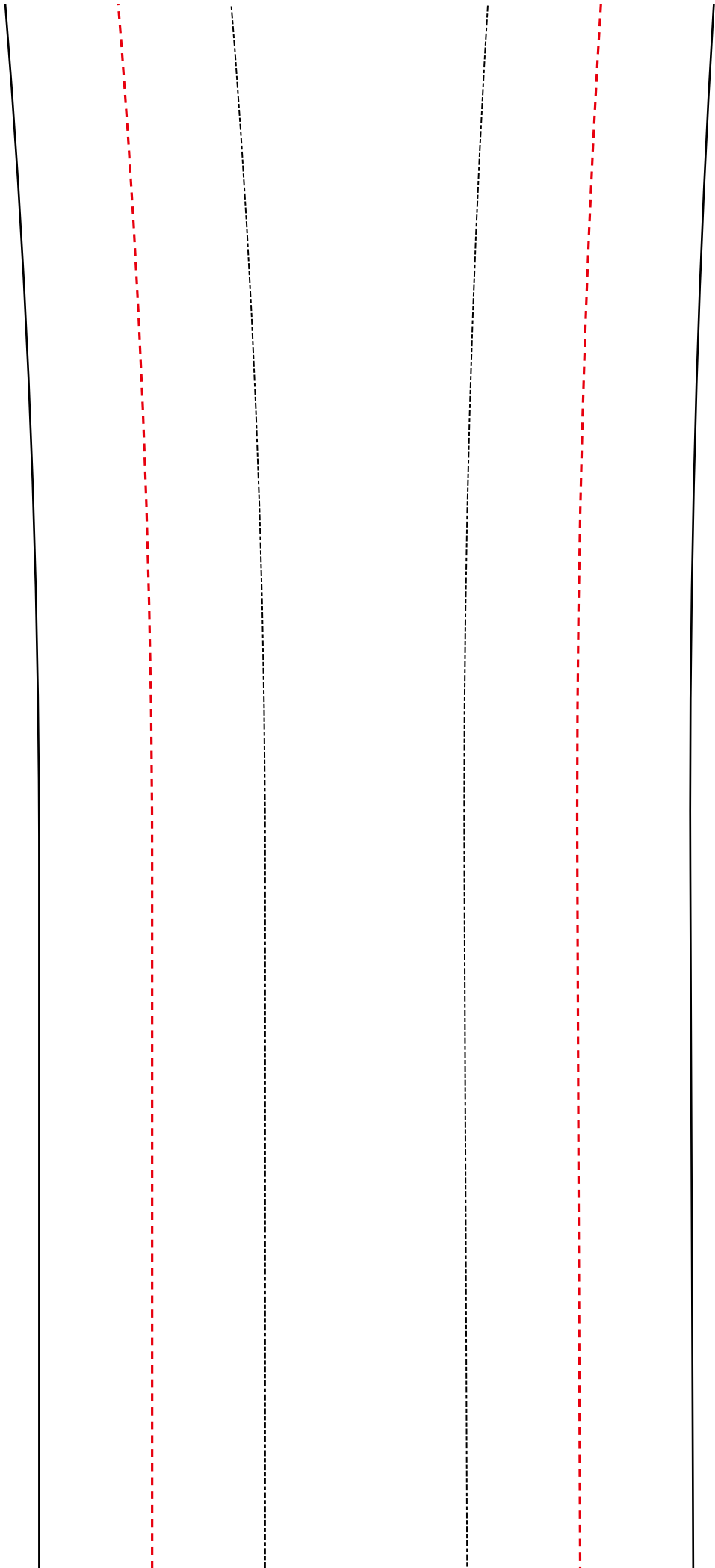
extra Läng



falten

Fadenlauf

35



Fadenlauf



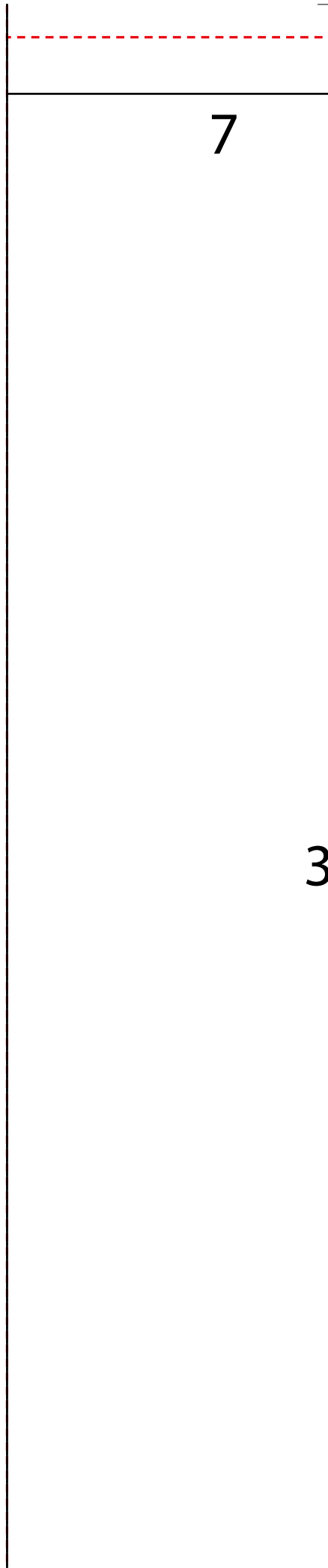


84

stoffbruch

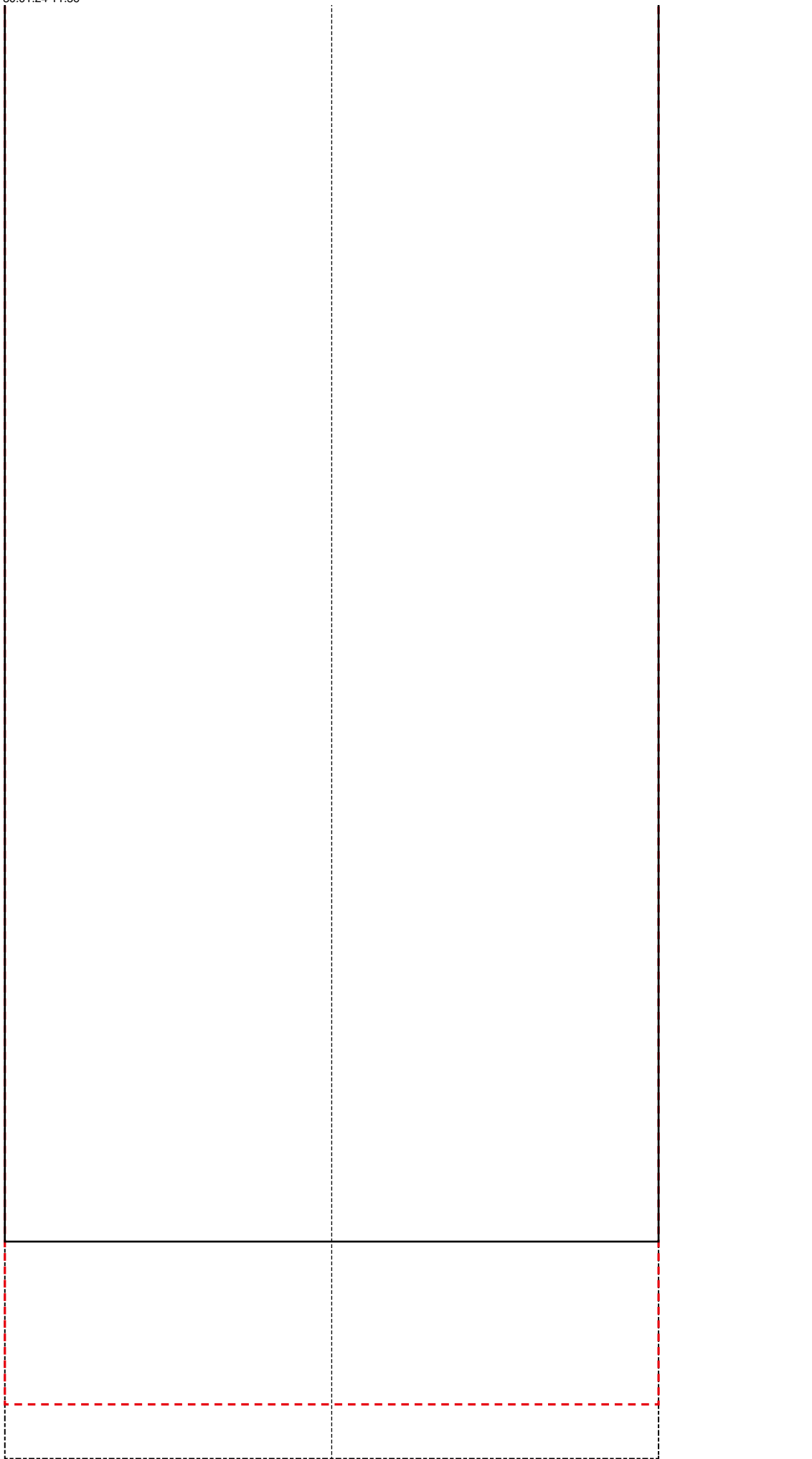
3

7

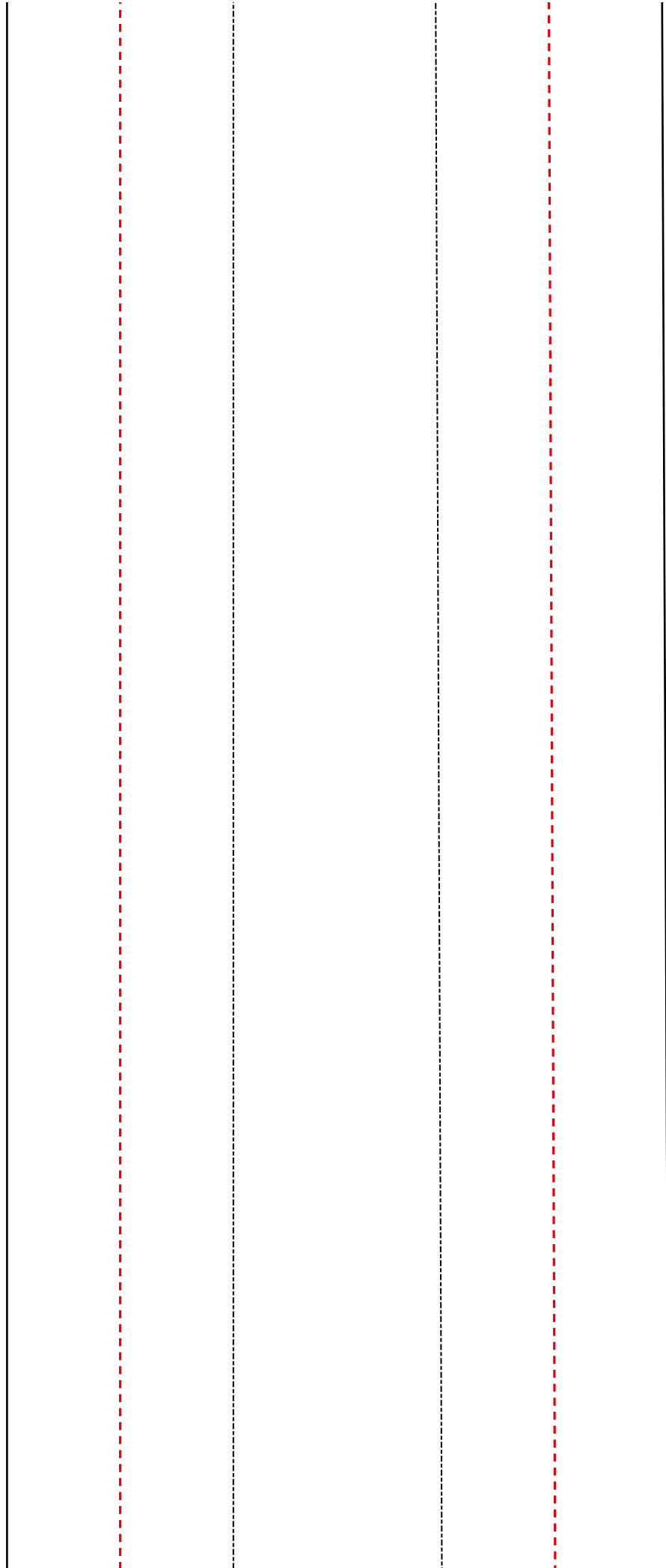


7

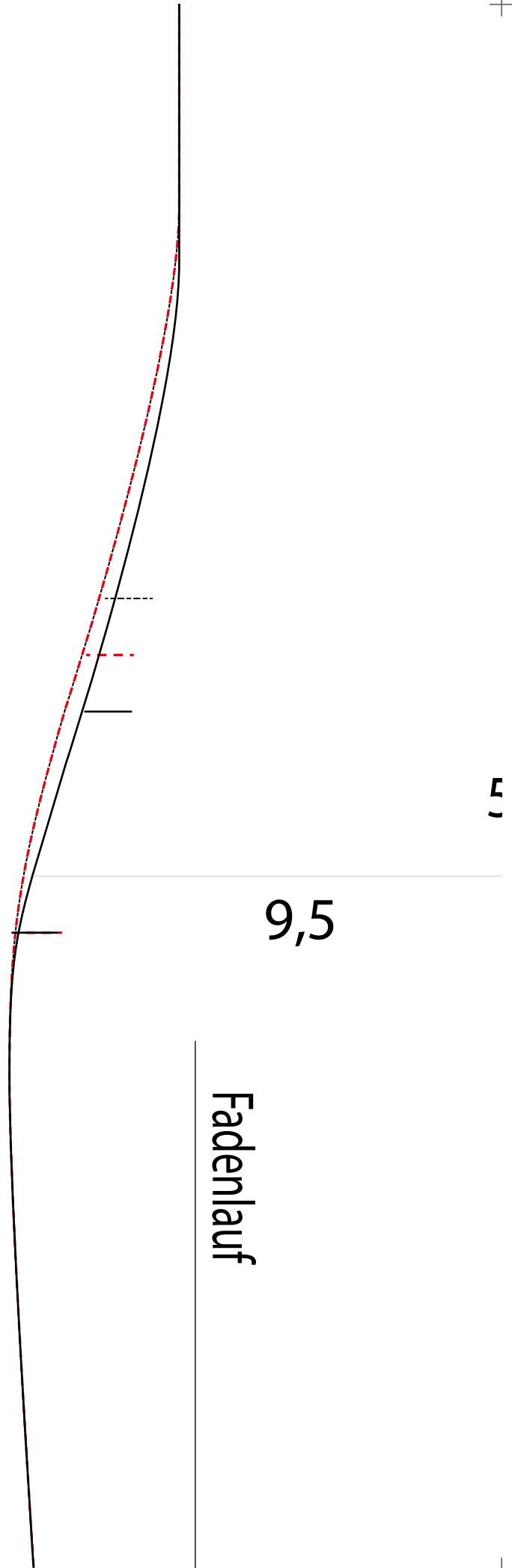












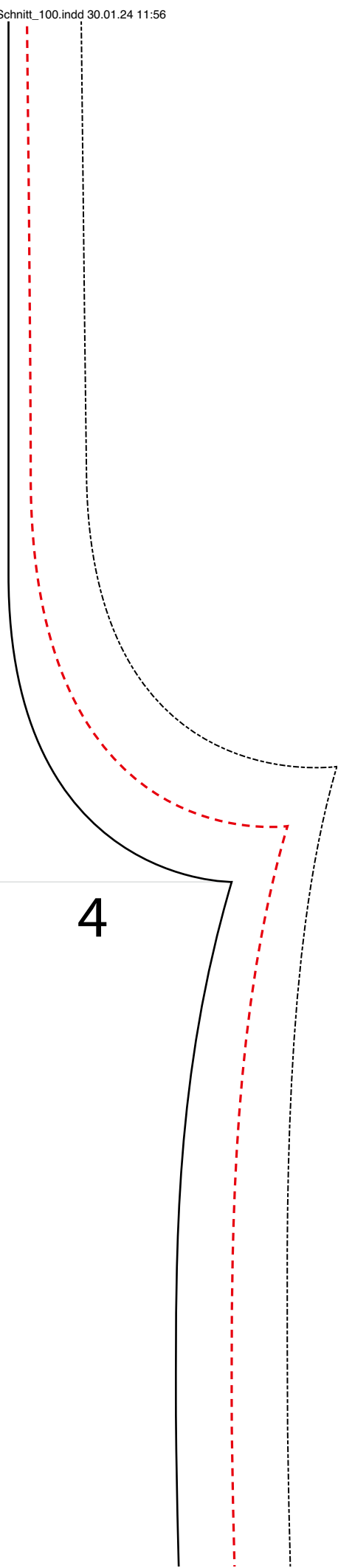
Fadenlauf

9,5

E

5,5

4





Knopfleiste  
Knopfmarkierungen für  
die linke Seite  
Knopflochmar. für  
die rechte Seite

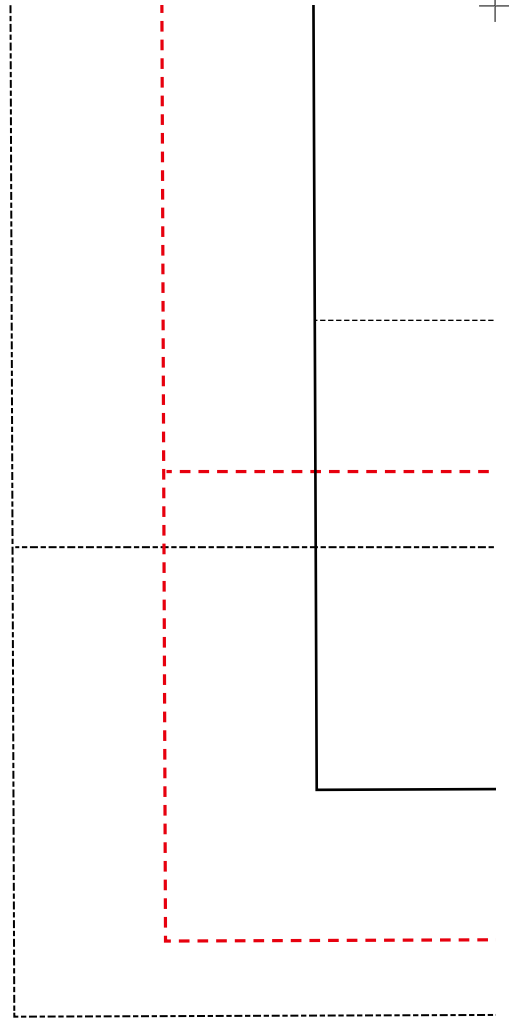
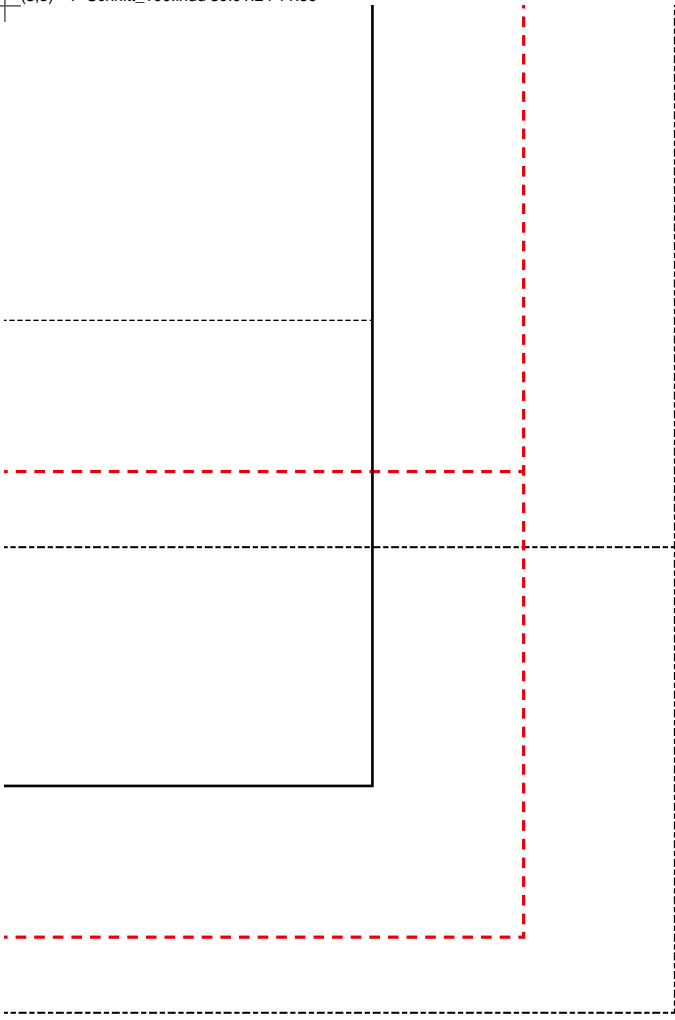
VoI



25

rd. Rockbahn



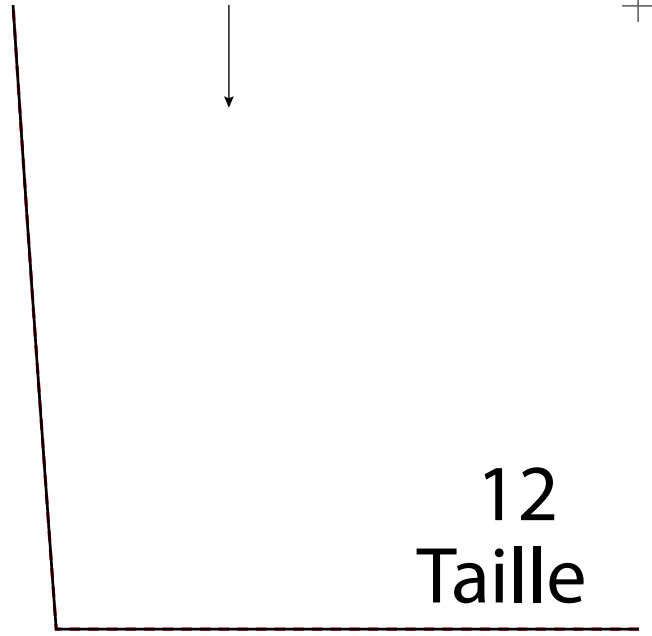
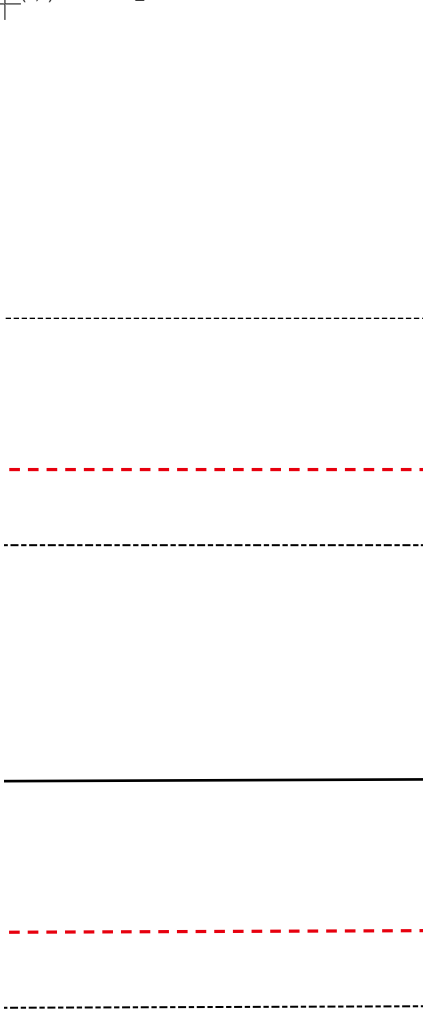


Rückenteil



27





Seitenteil

12  
Taille

