

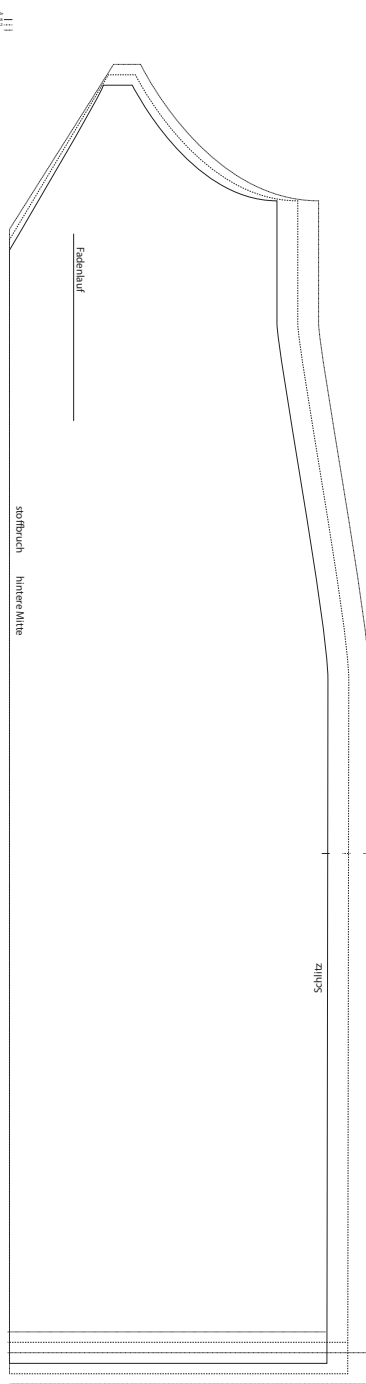
Trägerkleid Kaja

Kollektion Frühjahr Sommer 25

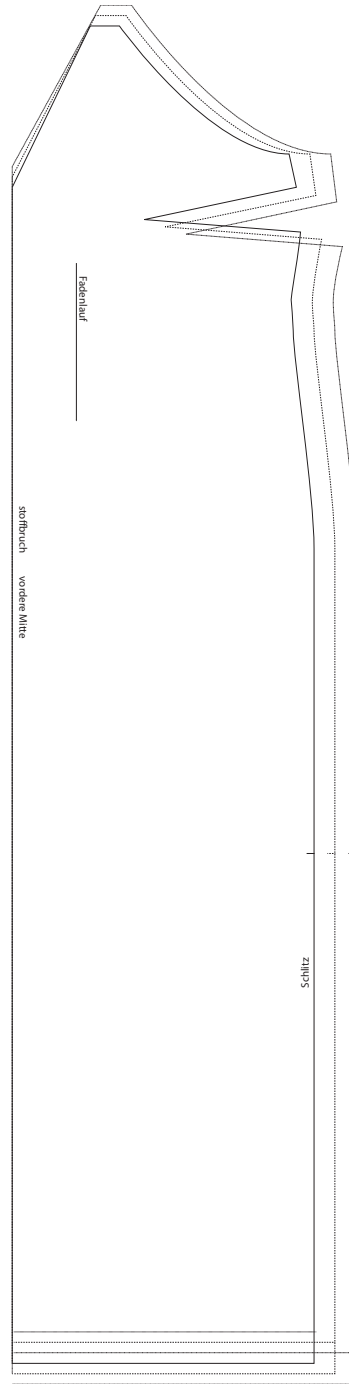
Größe 36-38/40-42/44

Initiative^{e.V.}
Handarbeit

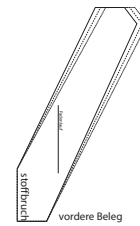
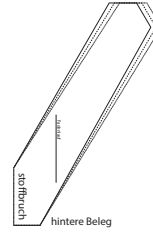
1:1
1:1
1:1
1:1



Rückteil



Vorderteil

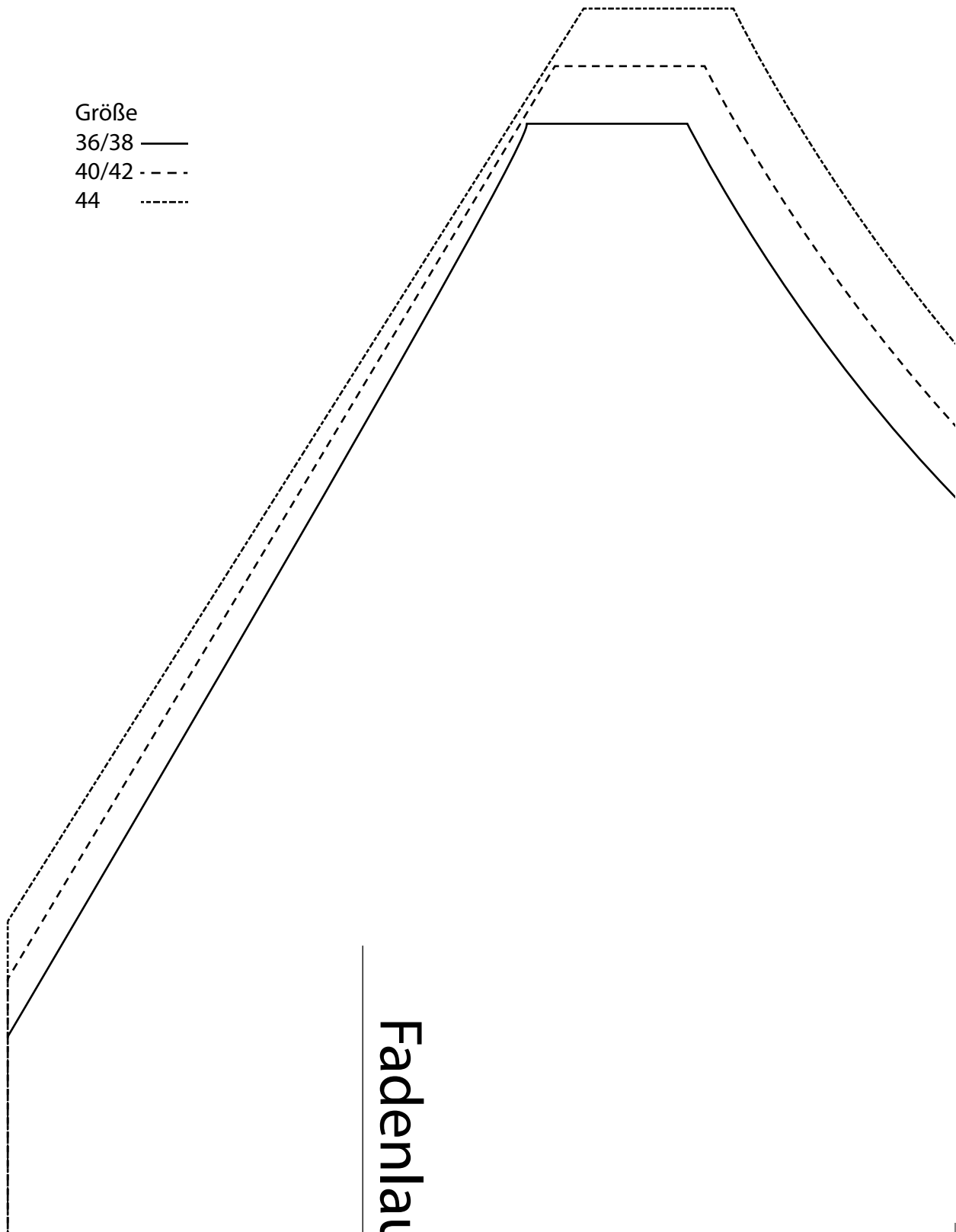


Initiative^{e.V.}
Handarbeit

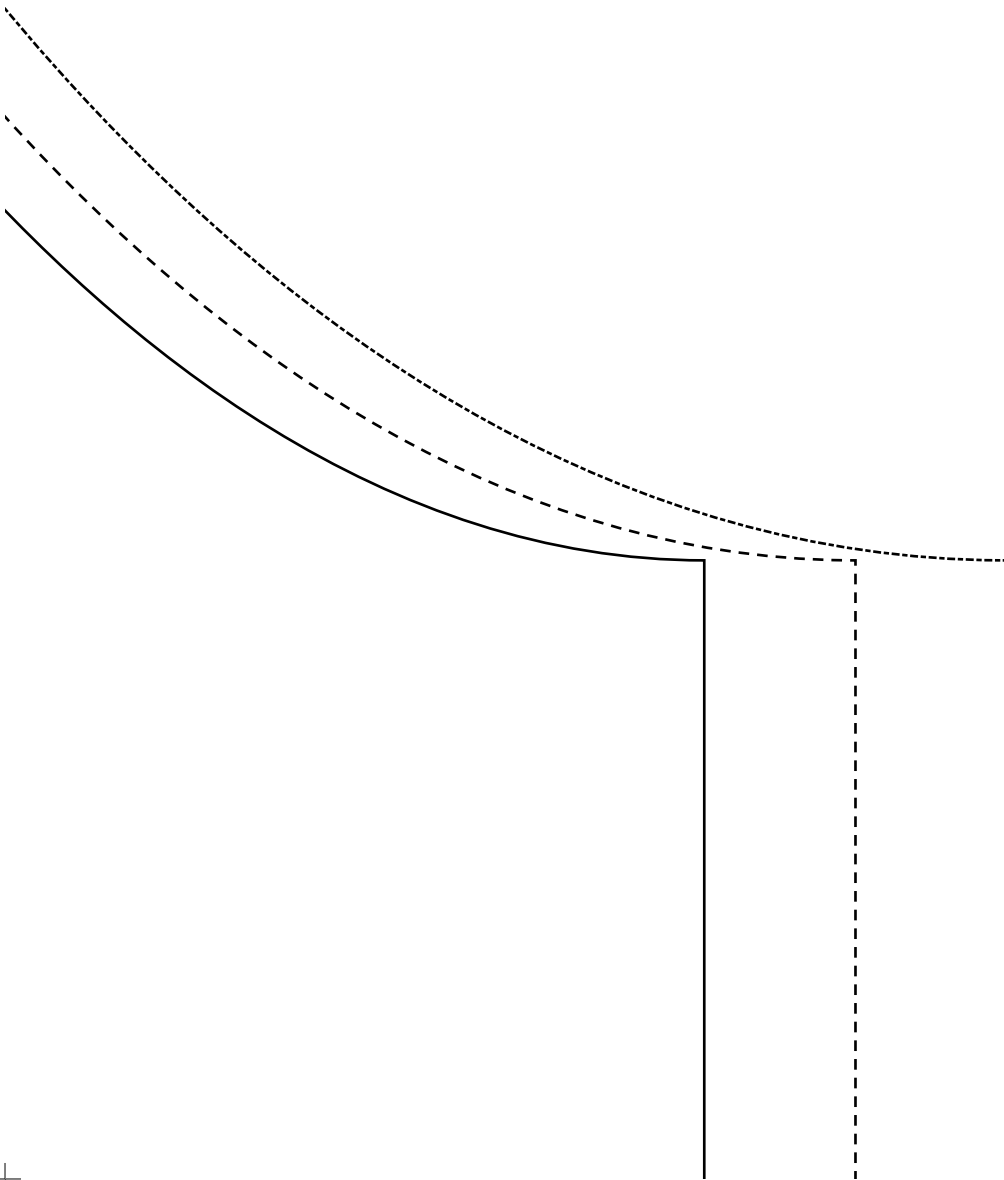
Trägerkleid Kaja
Kollektion Frühjahr Sommer 25
Größe 36-38/40-42/44

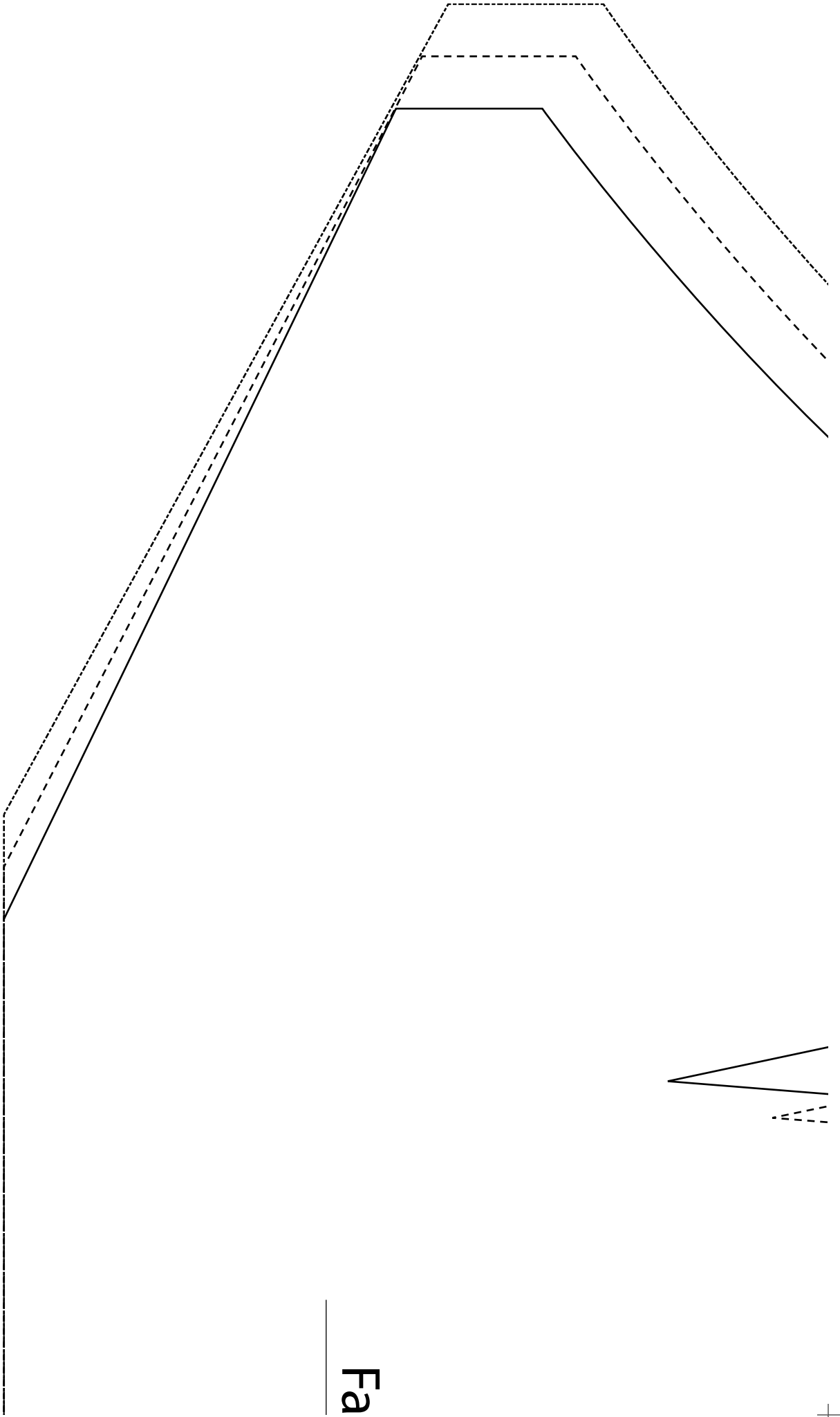
1cm

Größe
36/38 ———
40/42 - - - -
44 ······

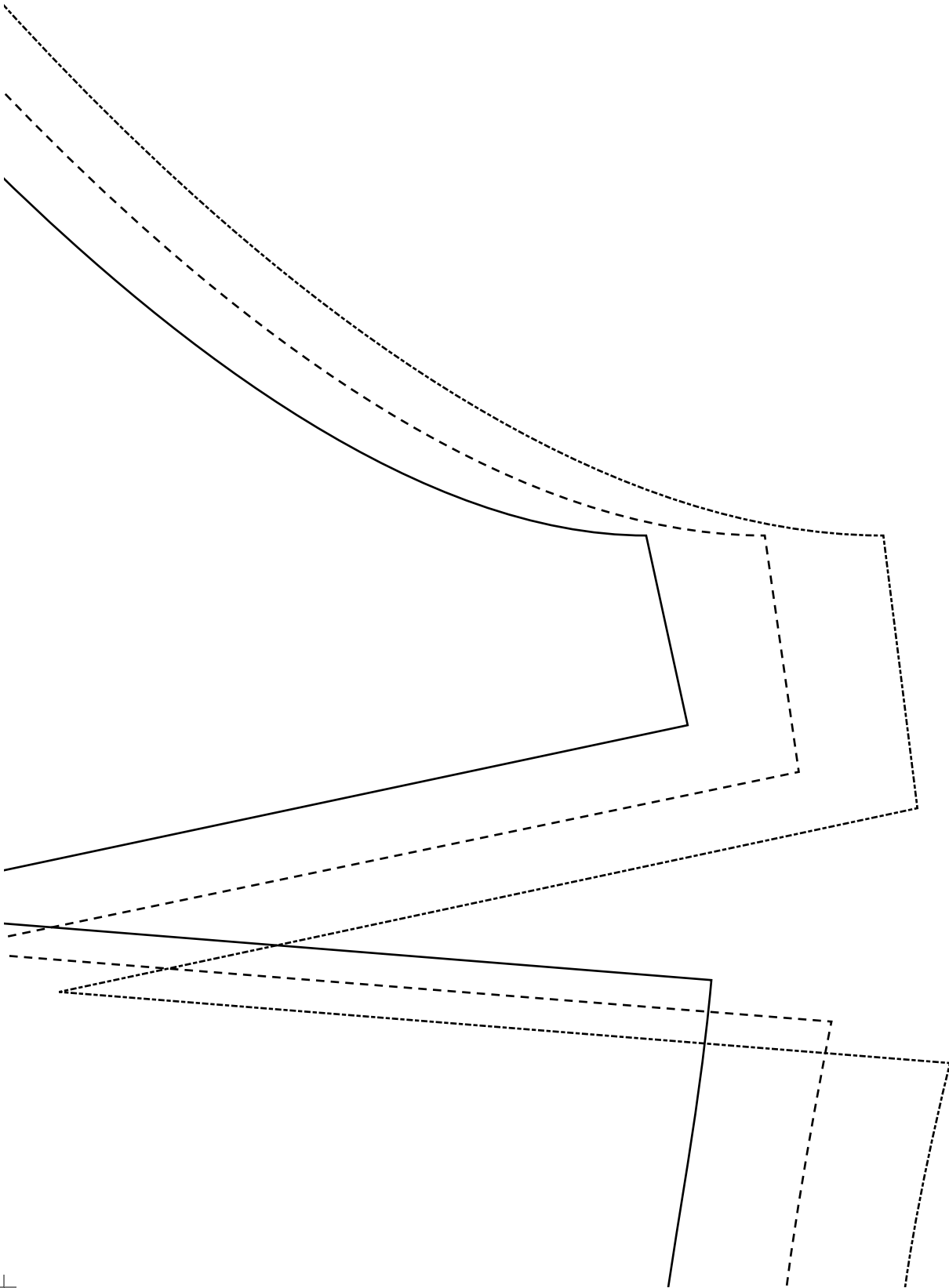


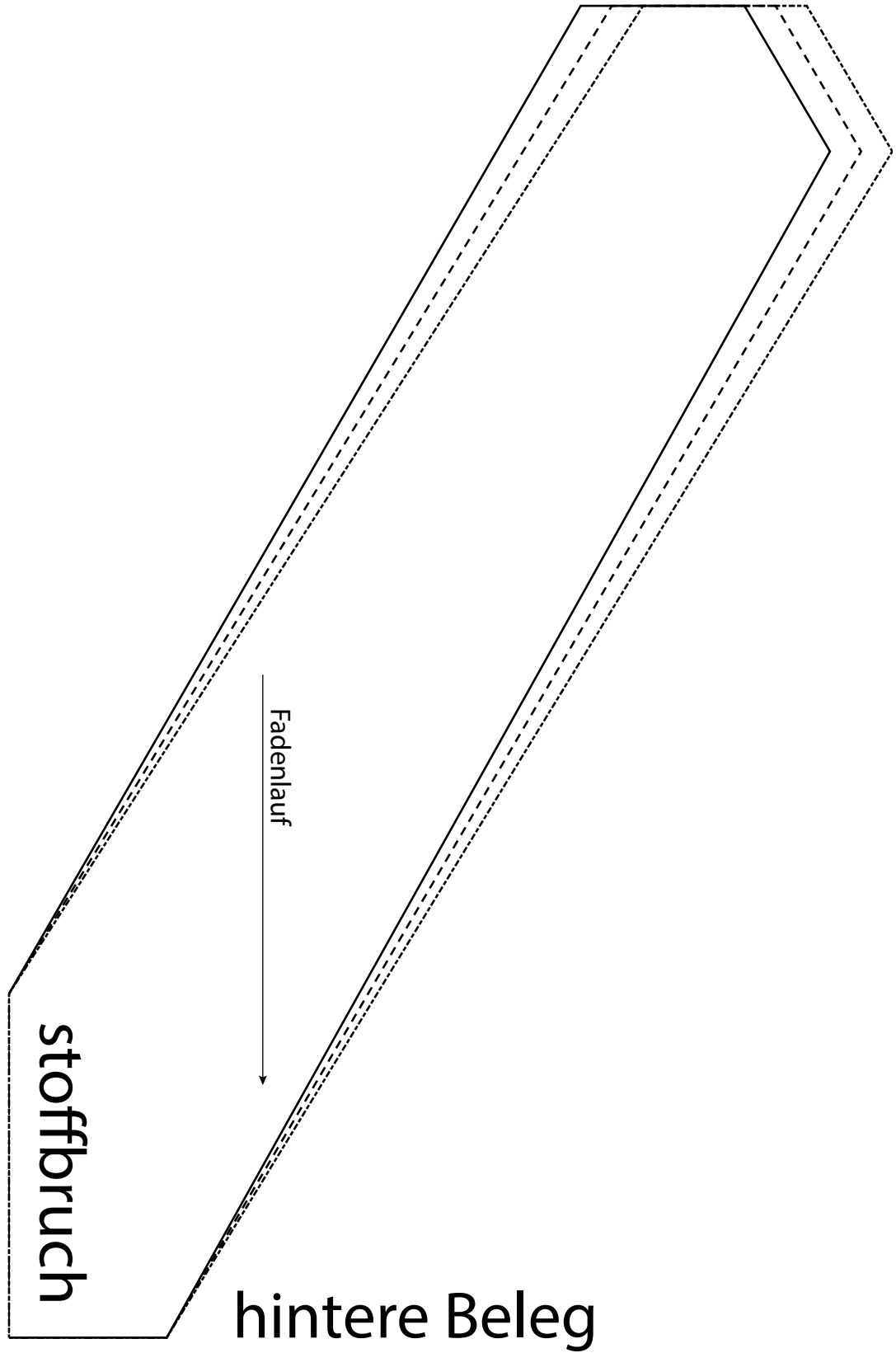
Fadenlar





Fa

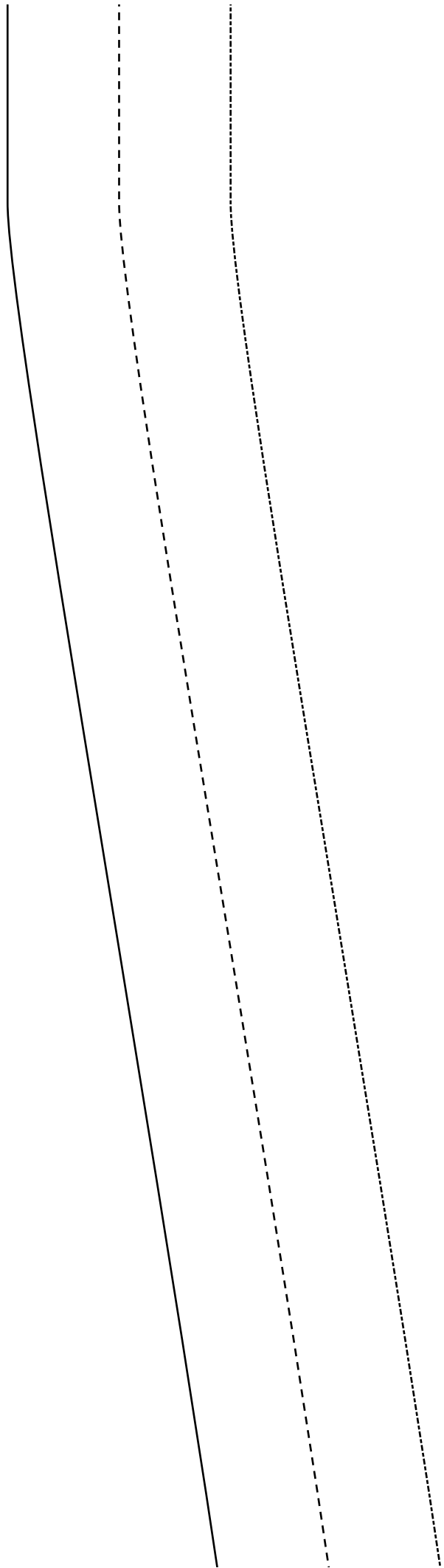




fr



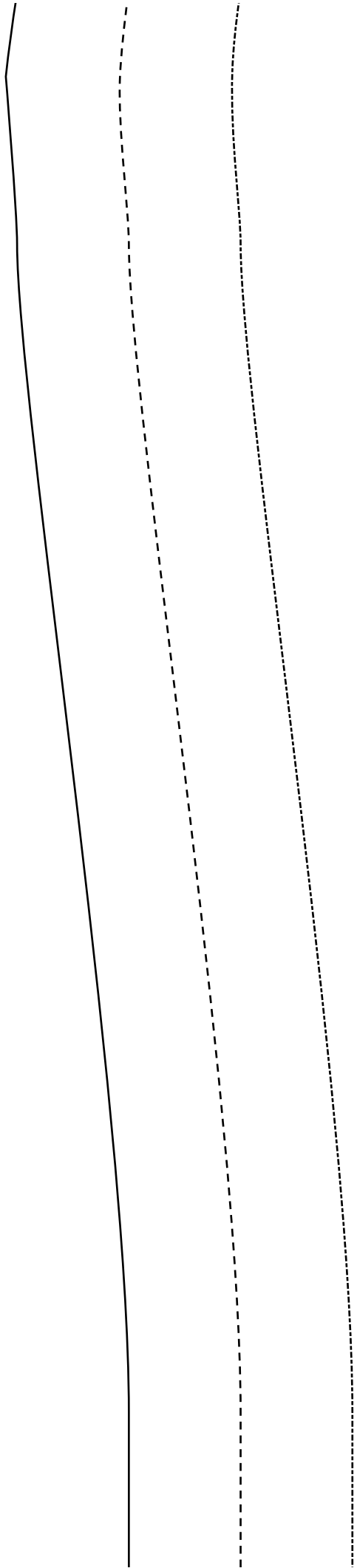
stoffbruch

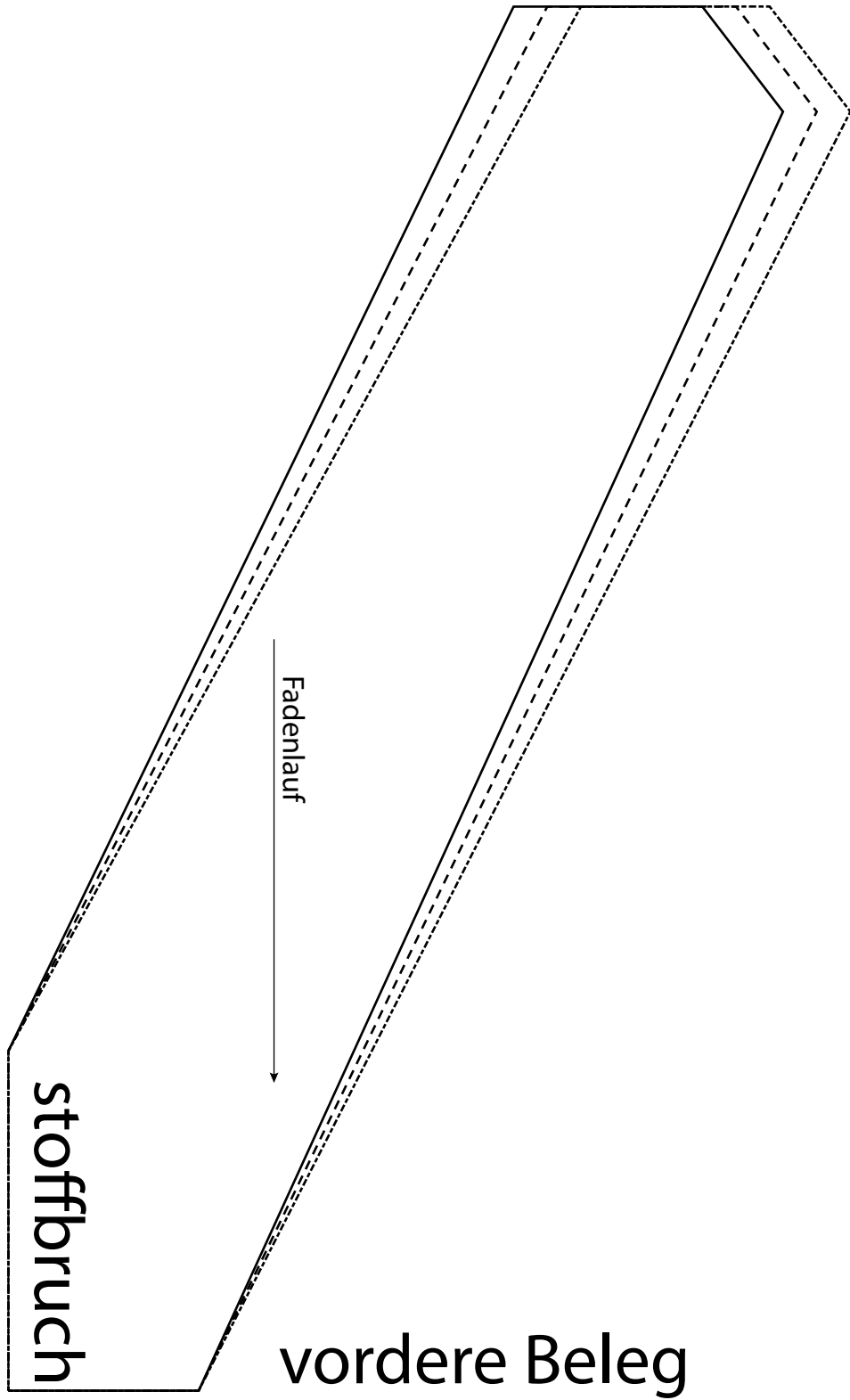


denlauf

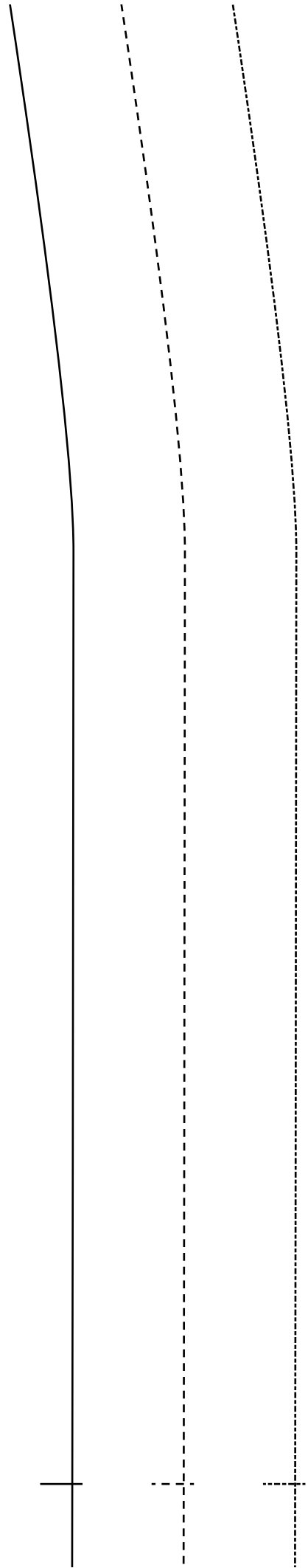


stoffbruch

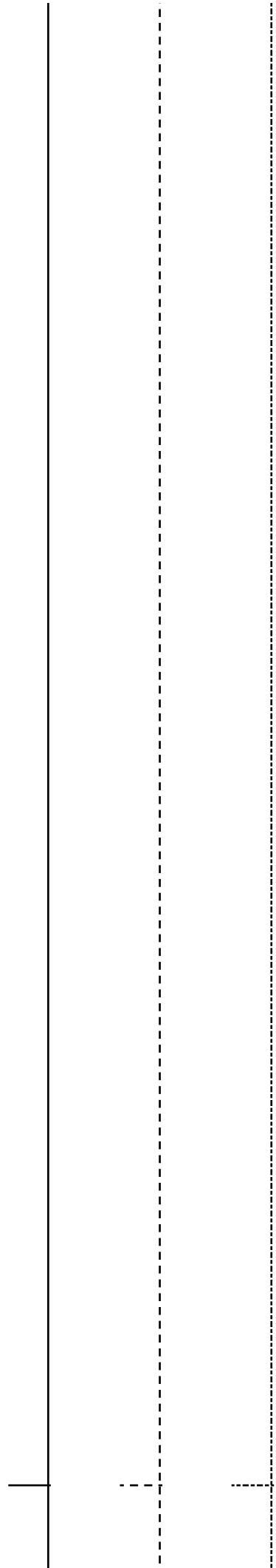




hintere Mitte



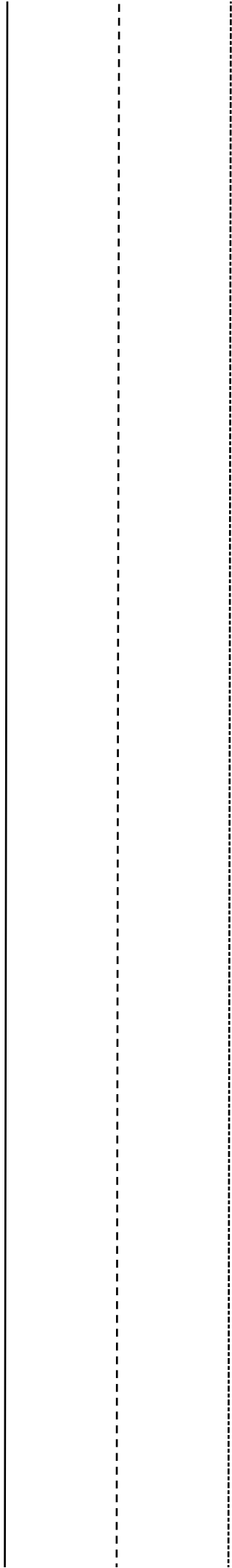
vordere Mitte



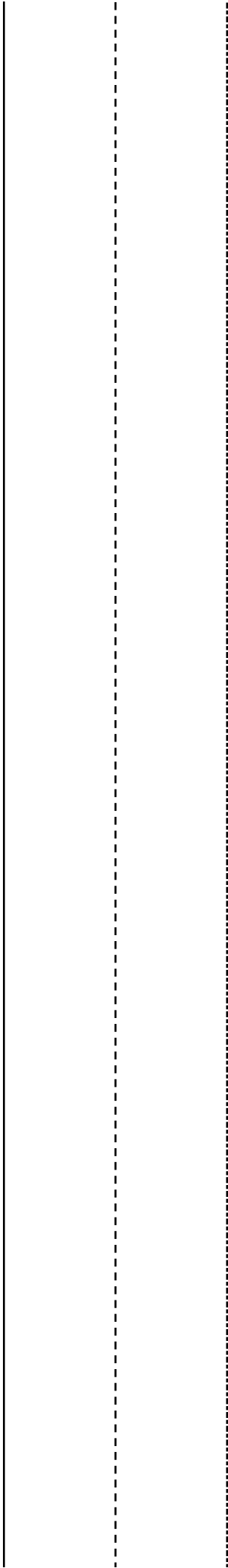




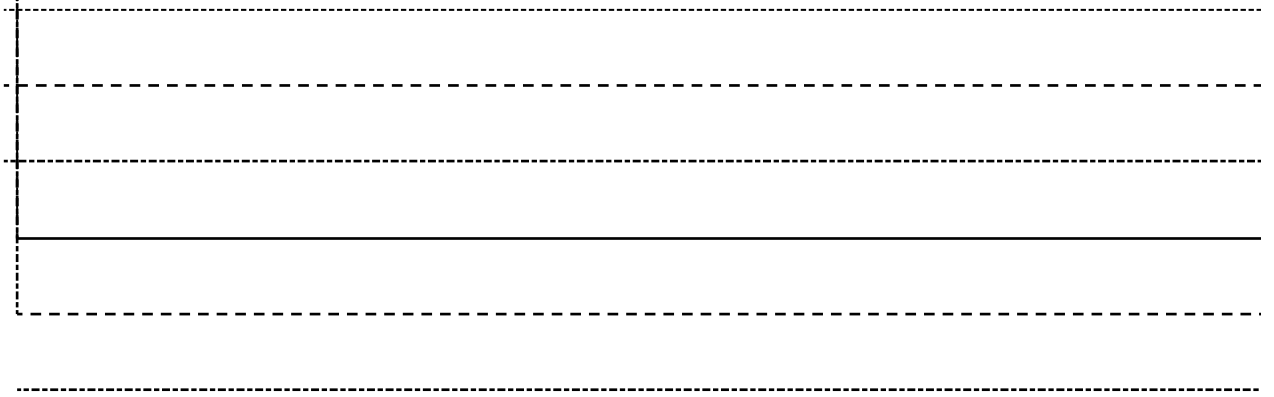
Schlitz



Schlitz

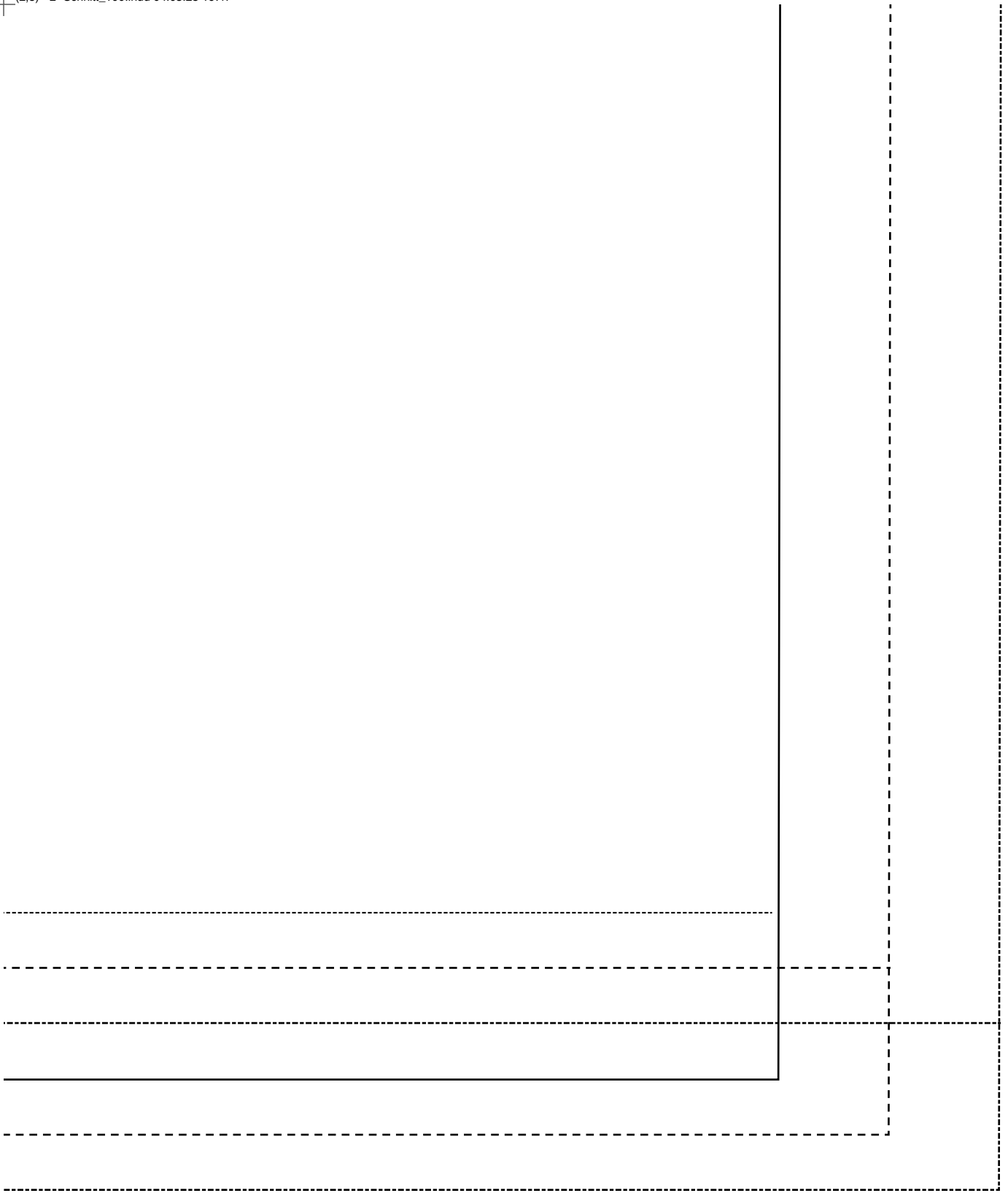






Rückteil





A series of horizontal lines for writing, including a solid line and several dashed lines.

Vorderteil

