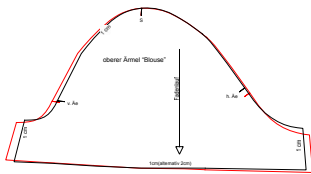


Bluse mit verdeckter Knopfleiste

Kollektion N°9

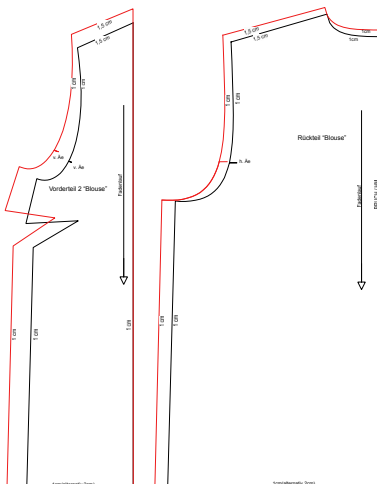
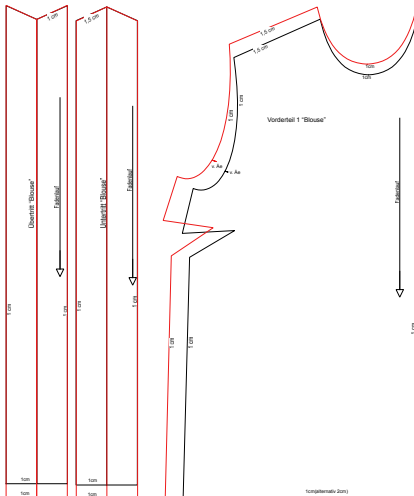
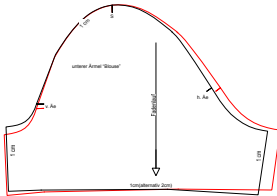
Größe 36/38 und 40/42

Drucken Sie die Schnittmusterseiten auf DIN A4 Papier aus. Achten Sie dabei darauf, dass das Druckergebnis in den Druckereinstellung nicht skaliert wird. Das Kontrollkästchen sollte genau 1 cm auf allen Seiten betragen.



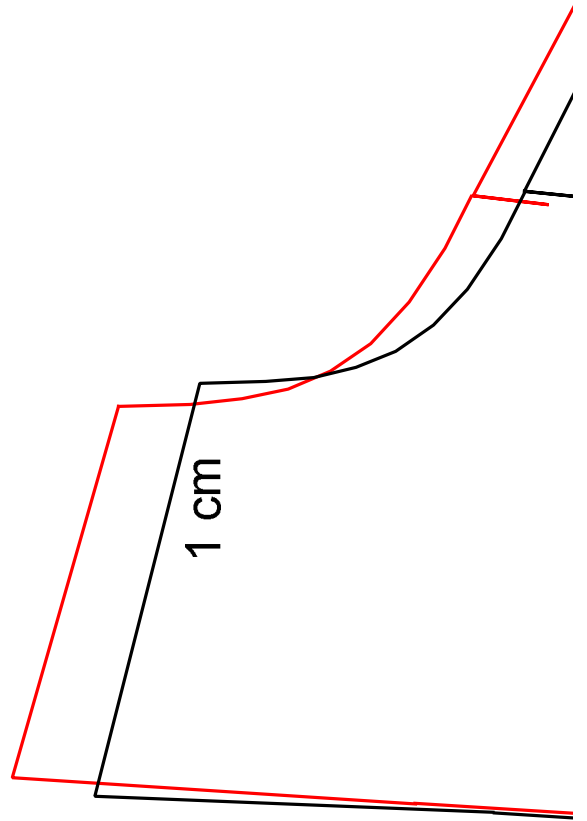
-- GR. 36/38 --

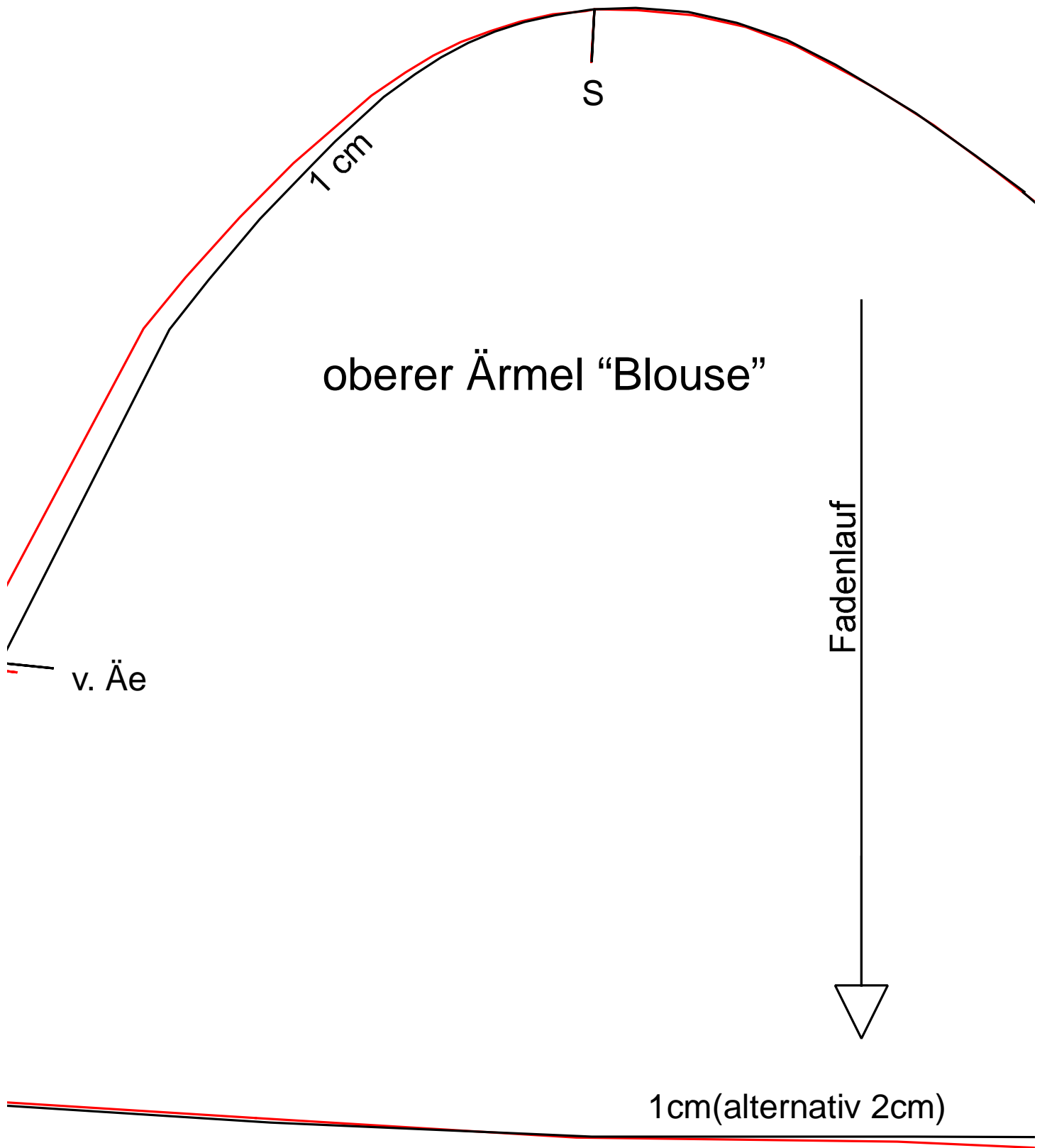
-- GR. 40/42 --

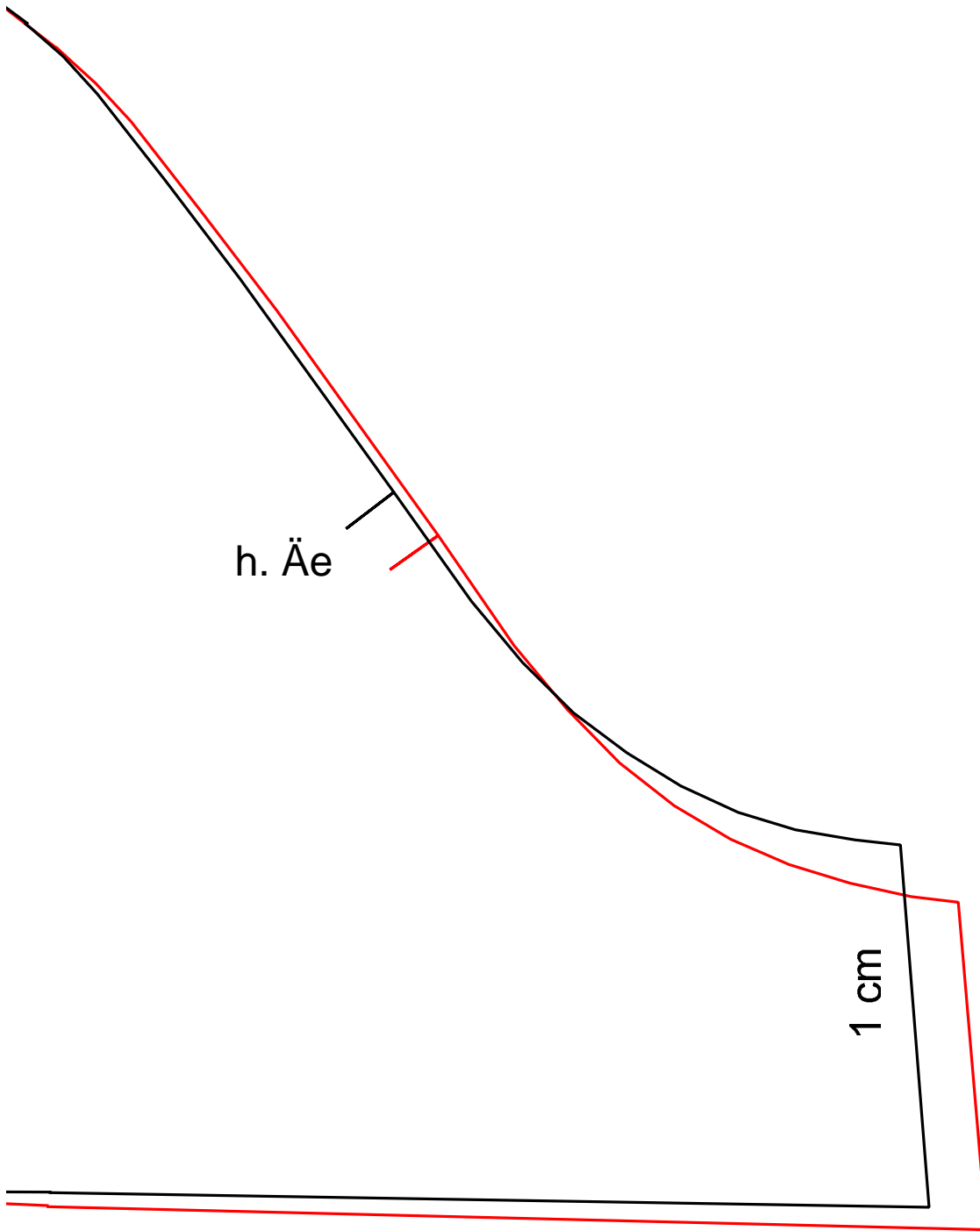




1cm

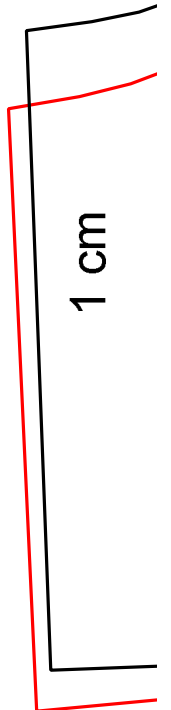


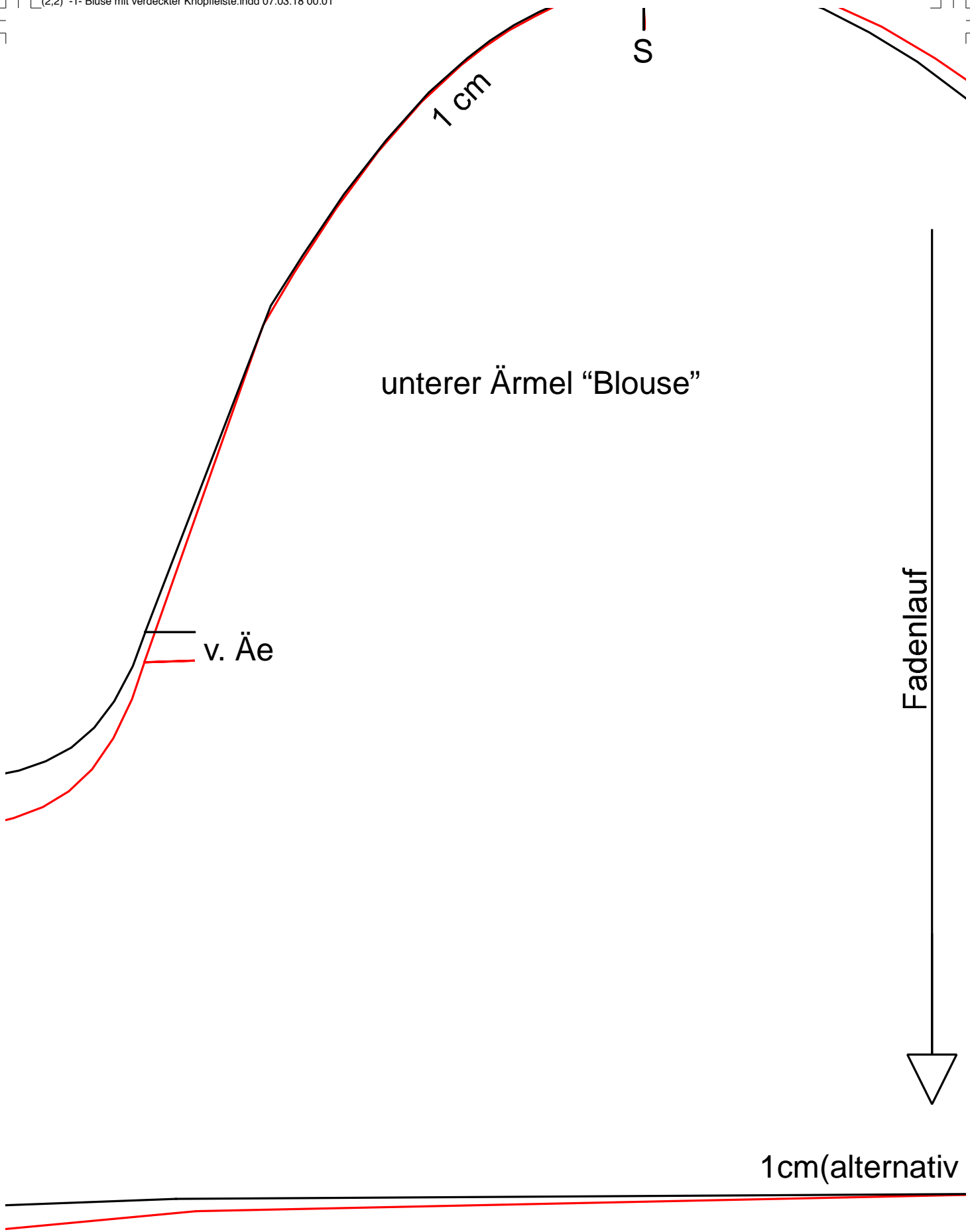


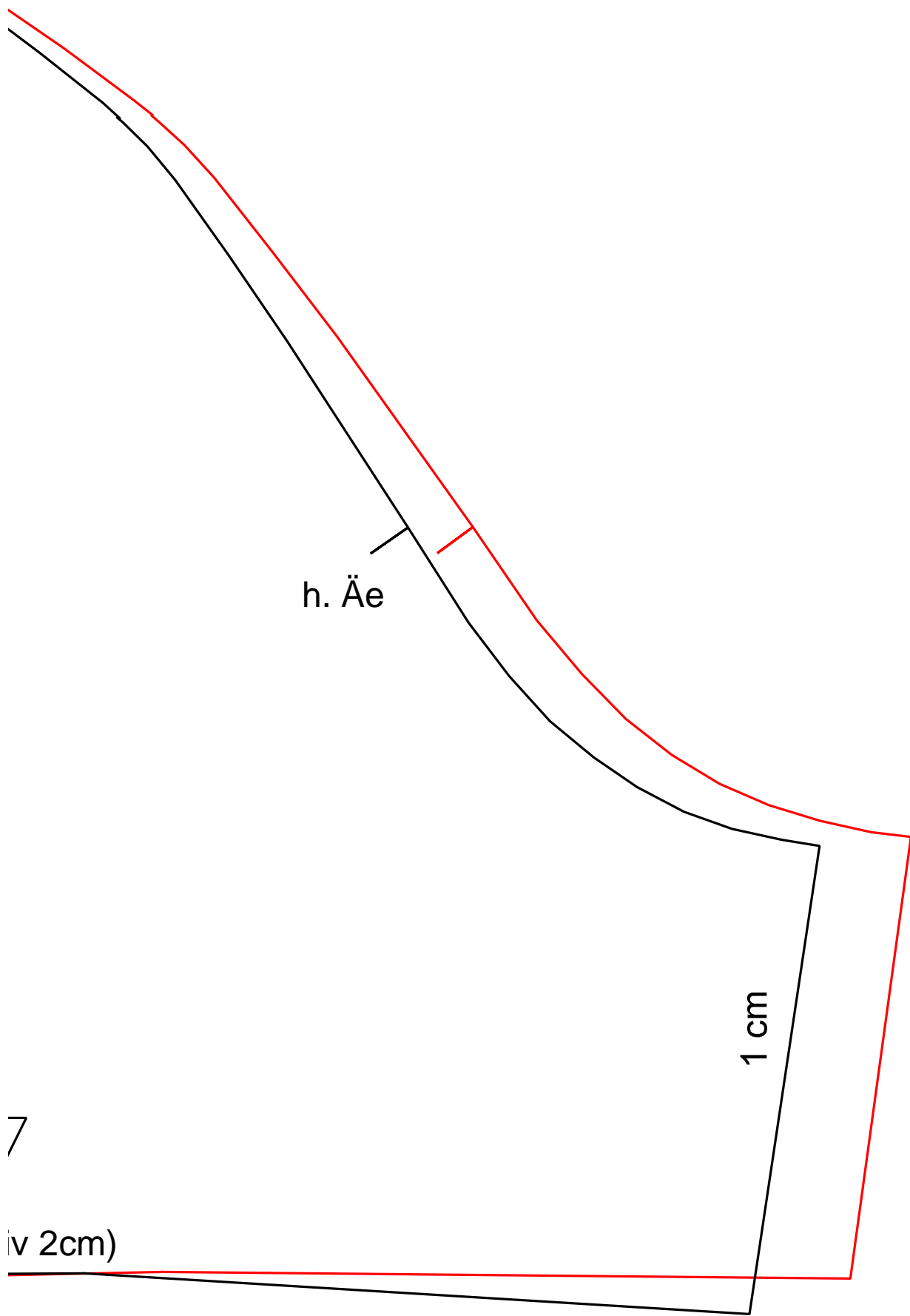


-- GR. 36/38 --

-- GR. 40/42 --







tritt "Blouse"

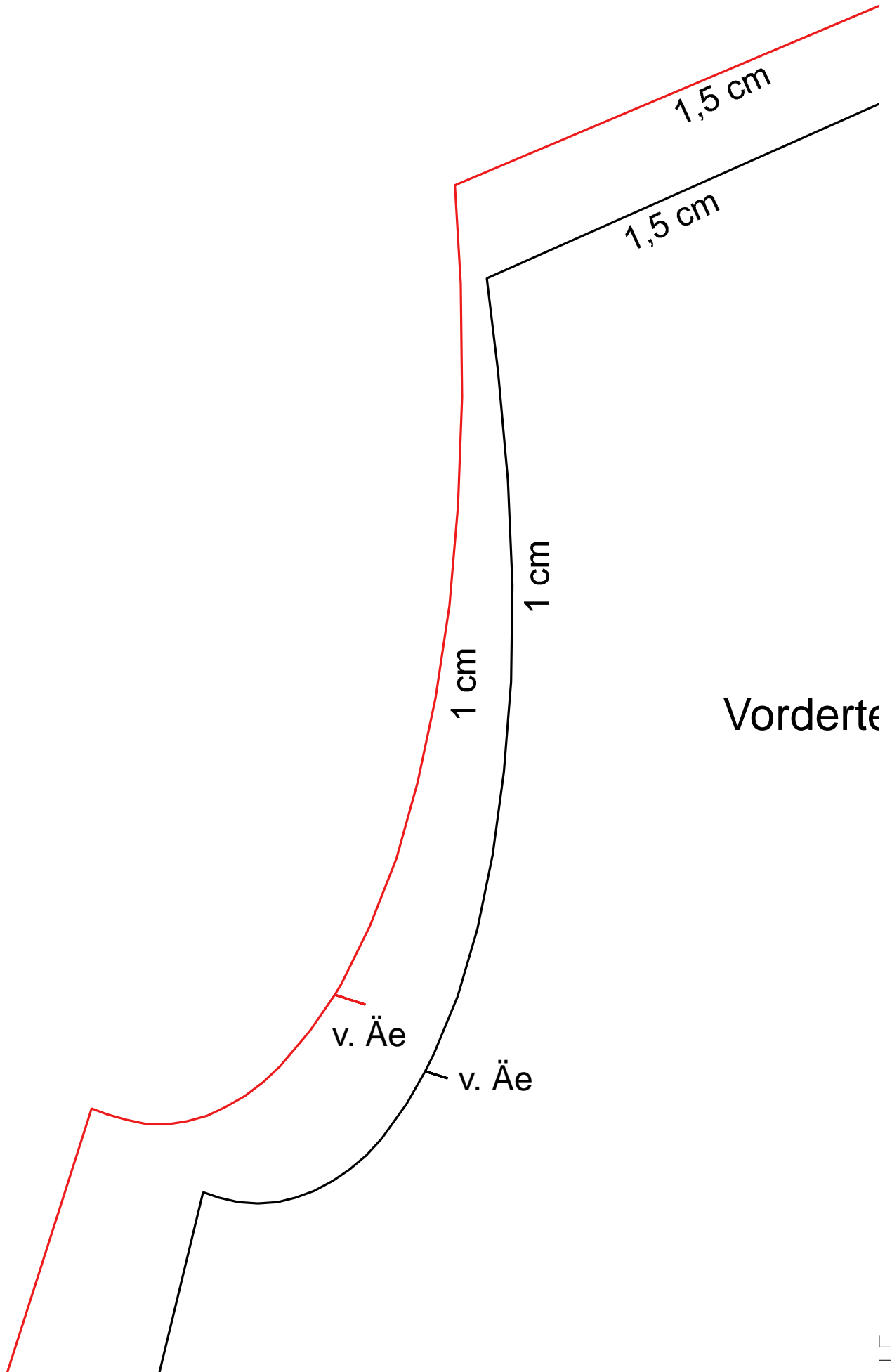
1 cm

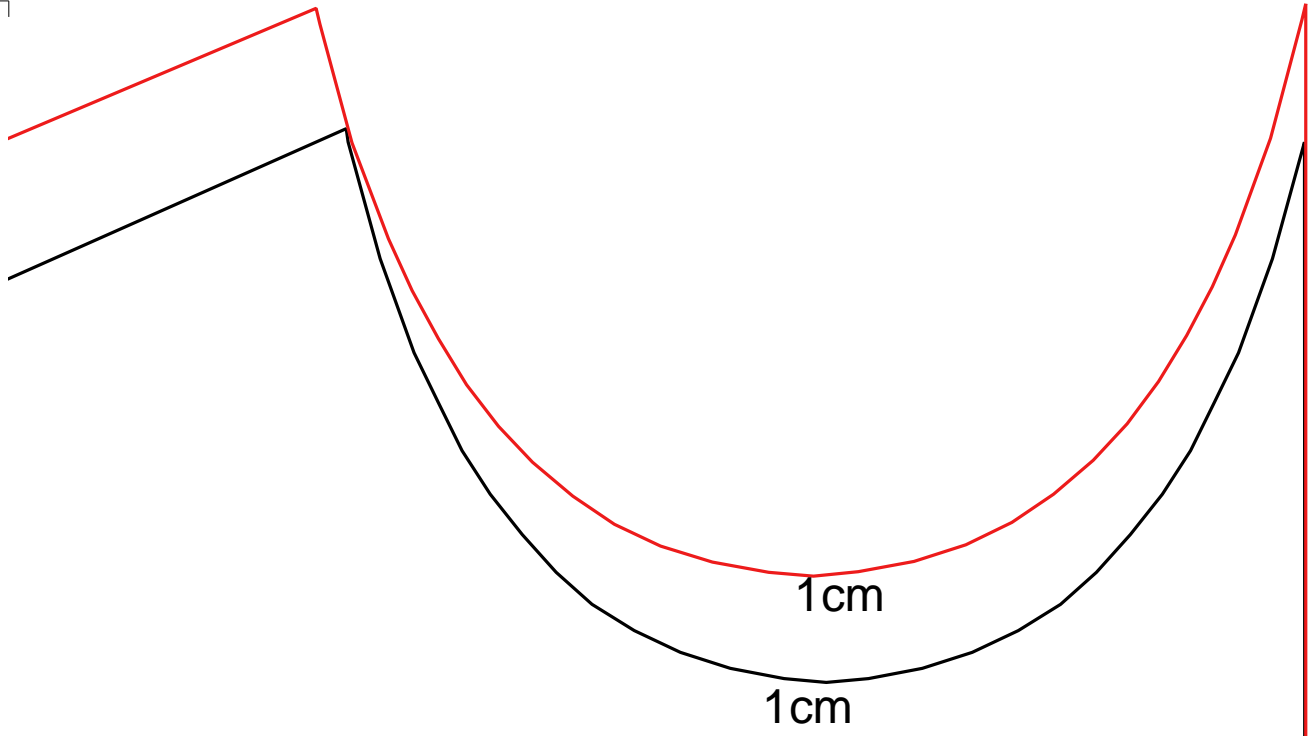
Fadenlauf

1,5 cm

tritt "Blouse"

Fadenlauf





teil 1 "Blouse"

Fadenlauf

1 cm

Übertr



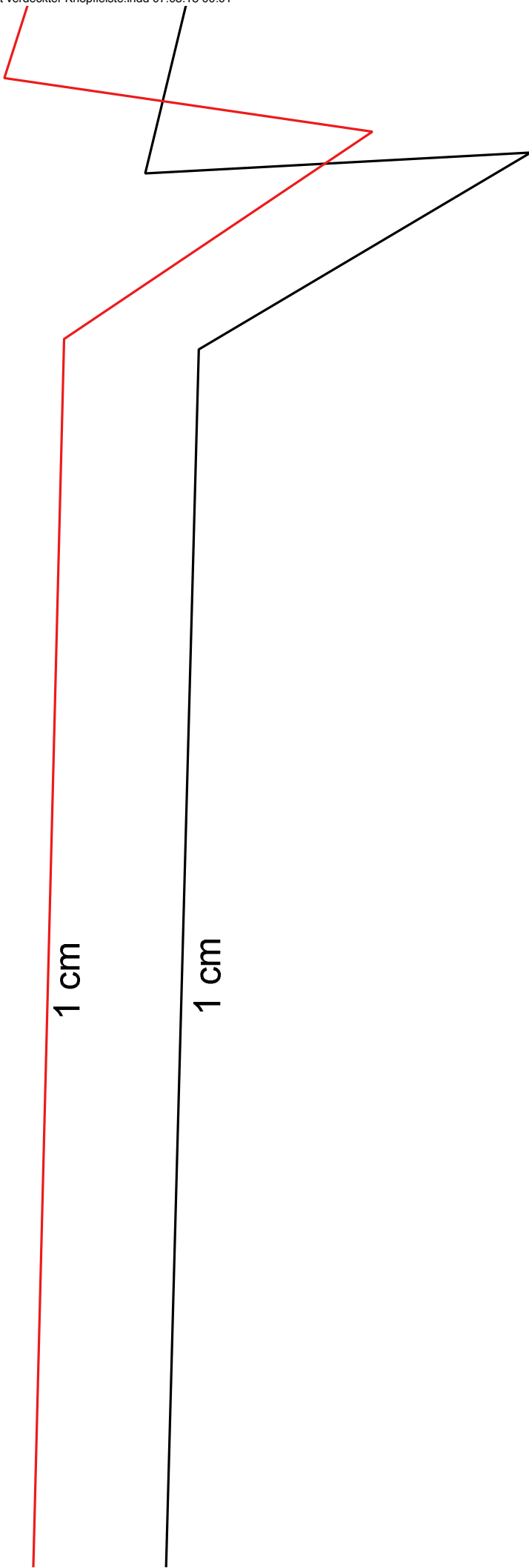
1 cm

1 cm

Untert



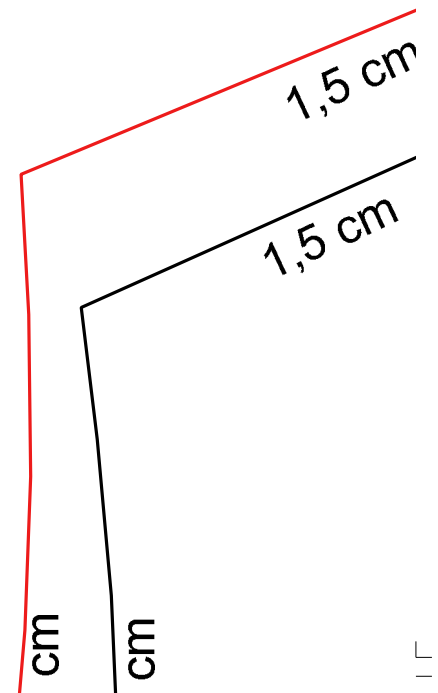
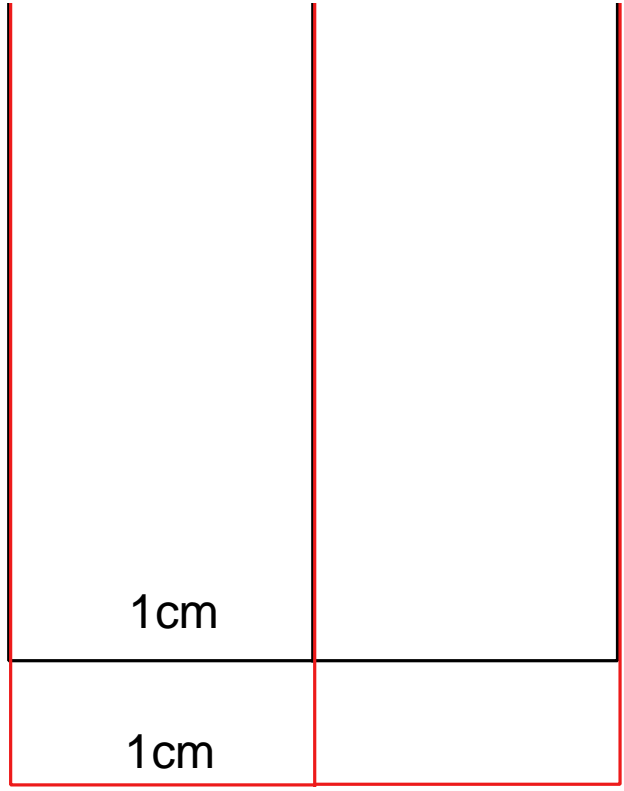
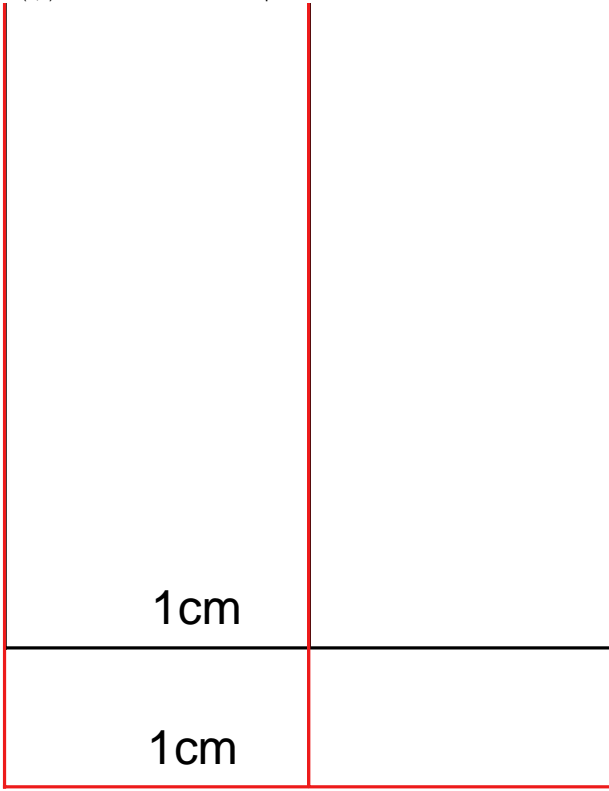
1 cm

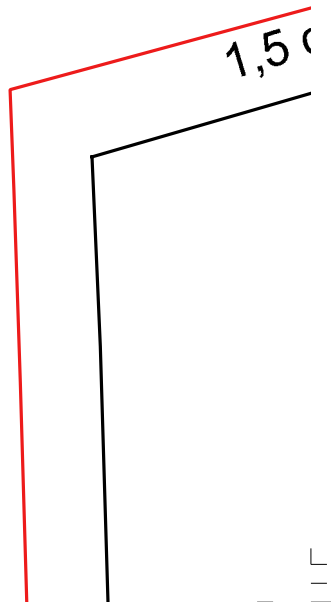
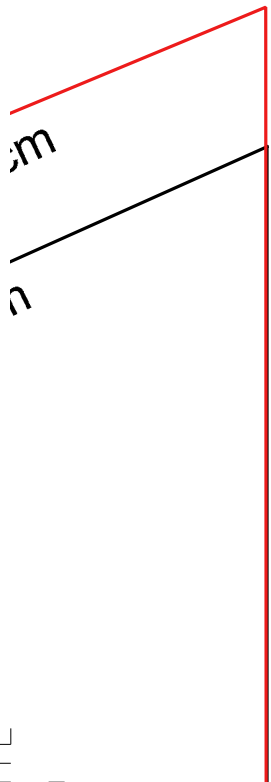
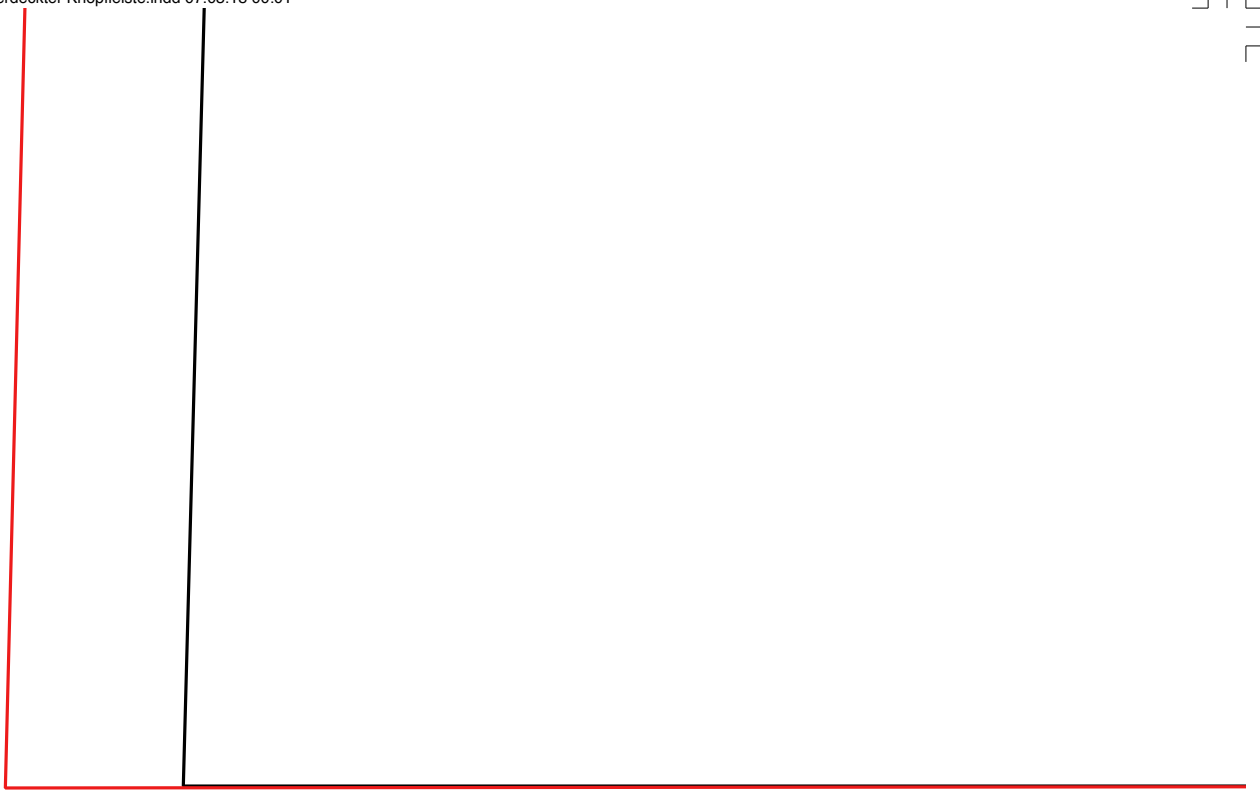




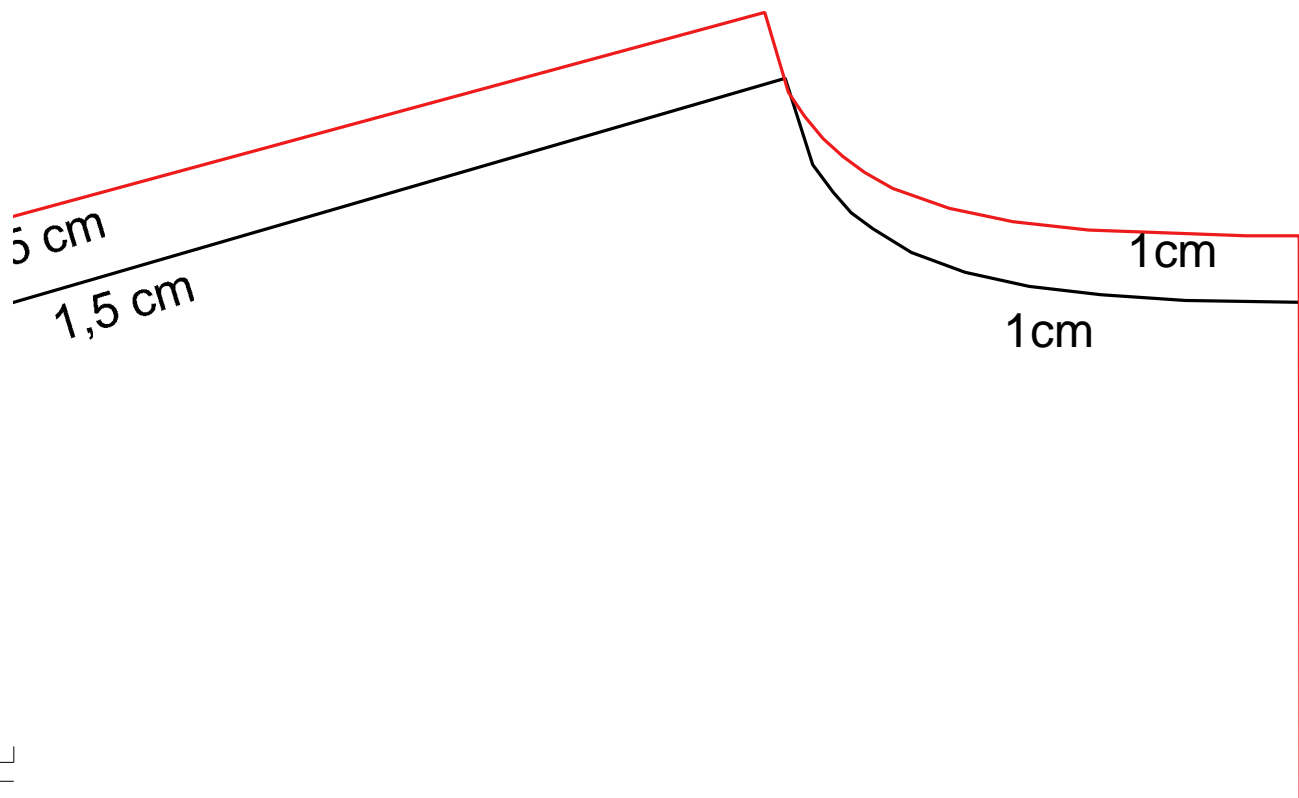
1 cm

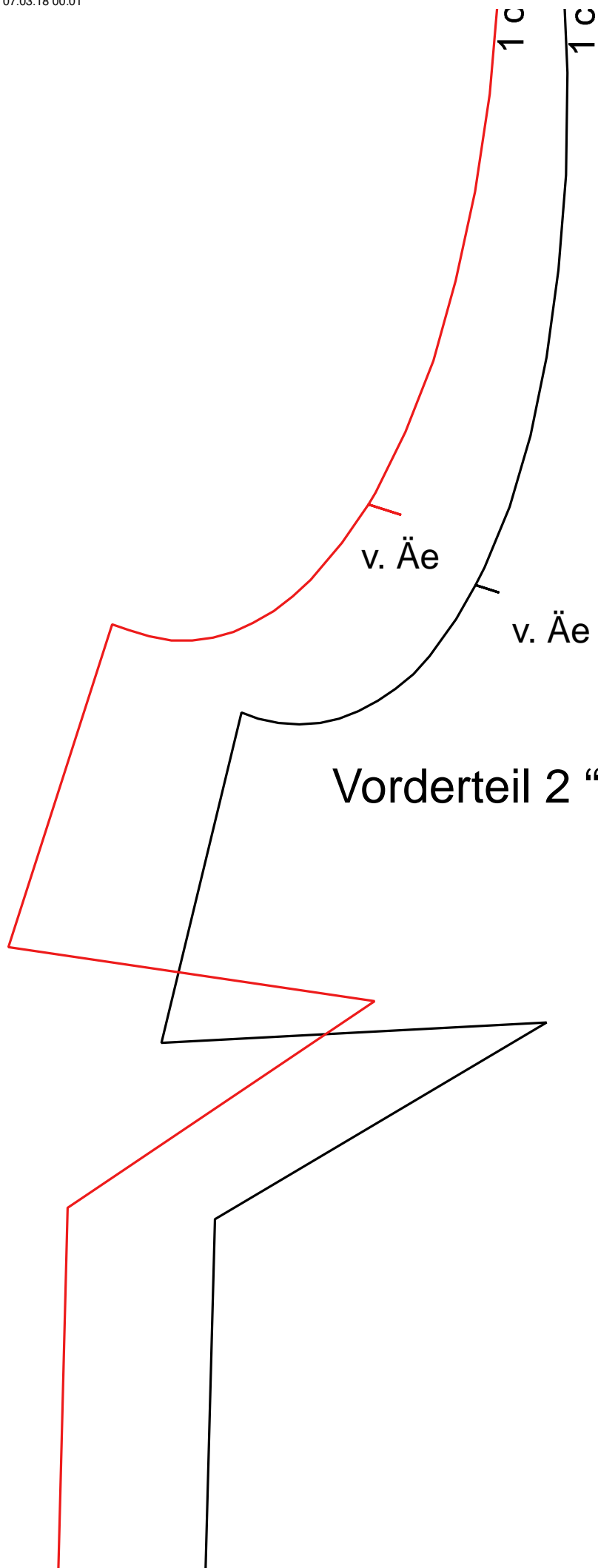






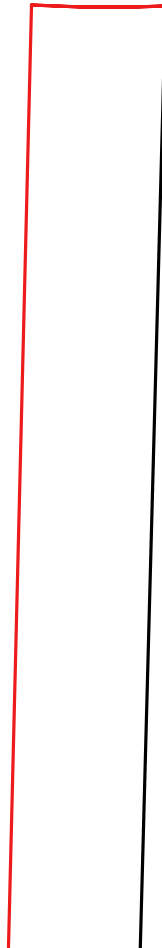
1cm(alternativ 2cm)





Vorderteil 2 "Blouse"

Fadenlauf



1 cm

1 cm

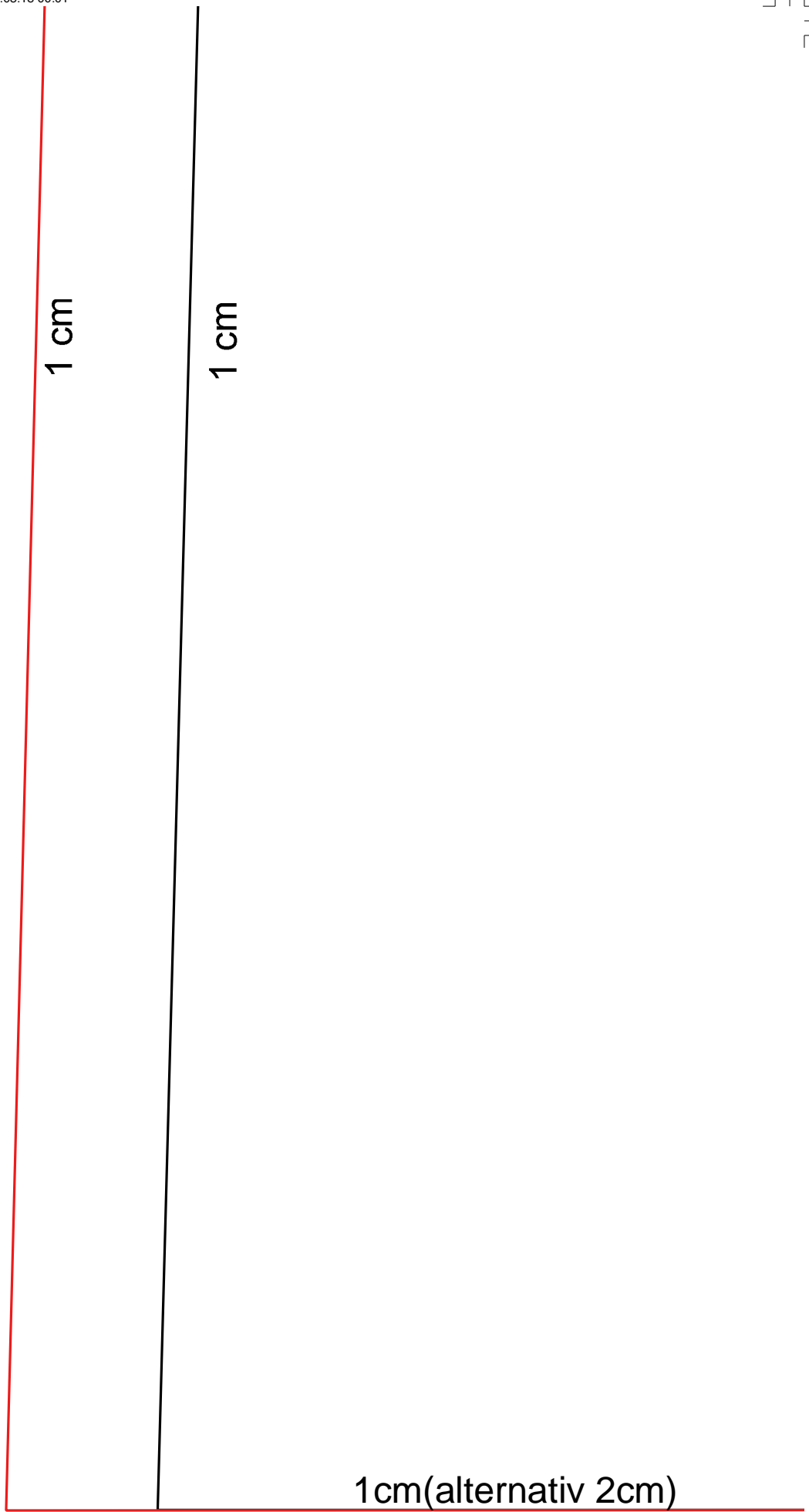
h. Äe

Rückteil "Blouse"

Fadenlauf

BRUCH / HM





1 cm

1 cm

1 cm

1cm(alternativ 2cm)