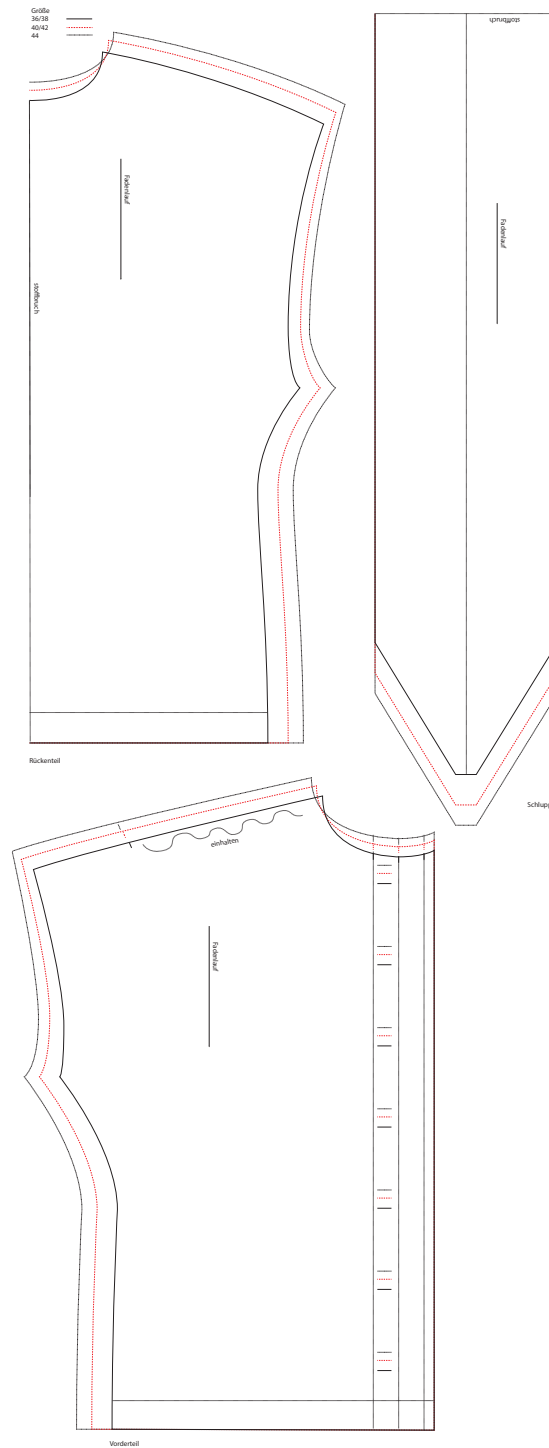


Bluse Georgina

Kollektion °19

Größe 36-38 / 40-42 / 44

Drucken Sie die Schnittmusterseiten auf DIN A4 Papier aus. Achten Sie dabei darauf, dass das Druckergebnis in den Druckereinstellung nicht skaliert wird. Das Kontrollkästchen sollte genau 1 cm auf allen Seiten betragen.

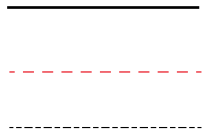




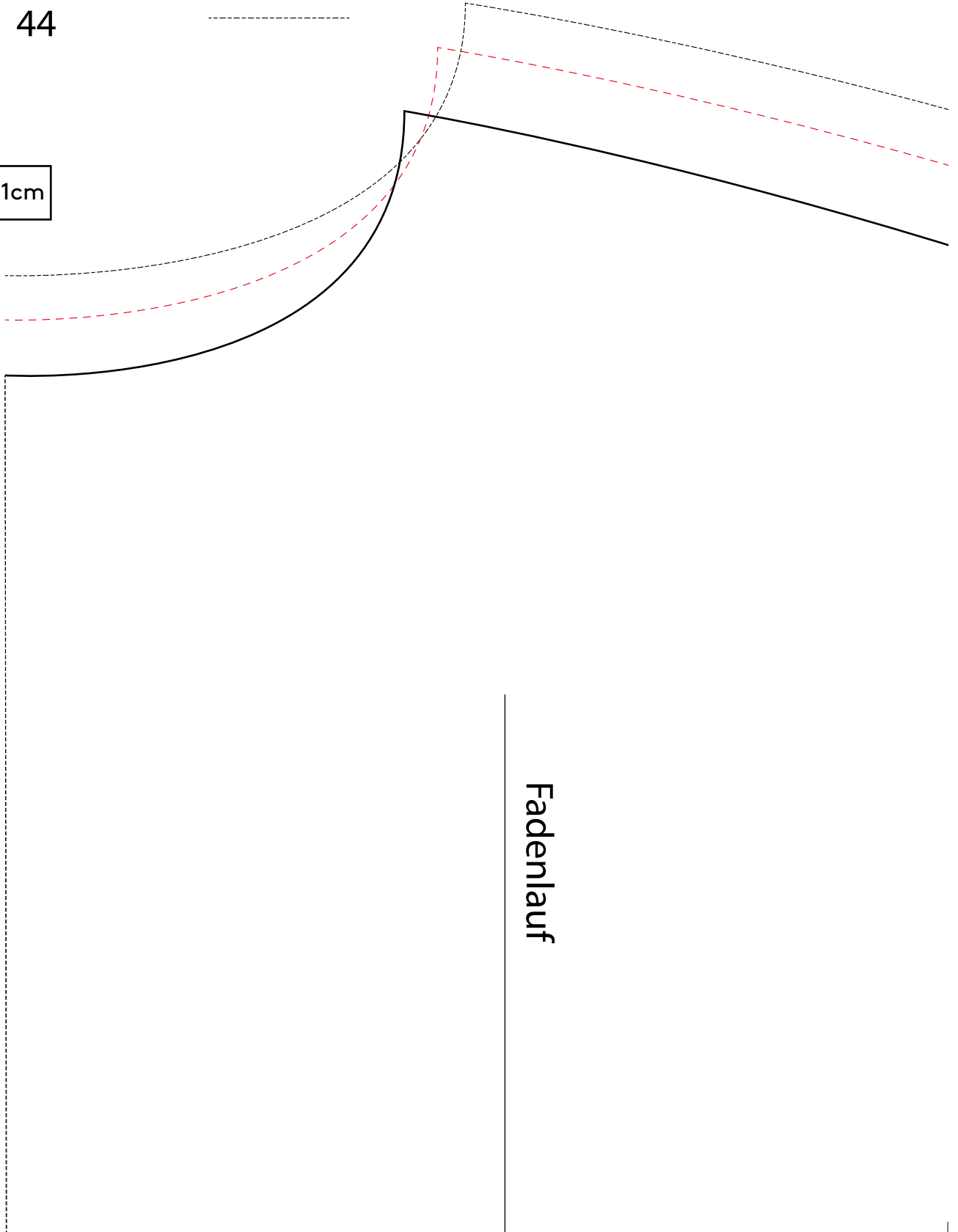
Initiative^{e.V.} Handarbeit

Bluse Georgina
Kollektion °19
Größe 36-38/40-42 /44

Größe
36/38
40/42
44

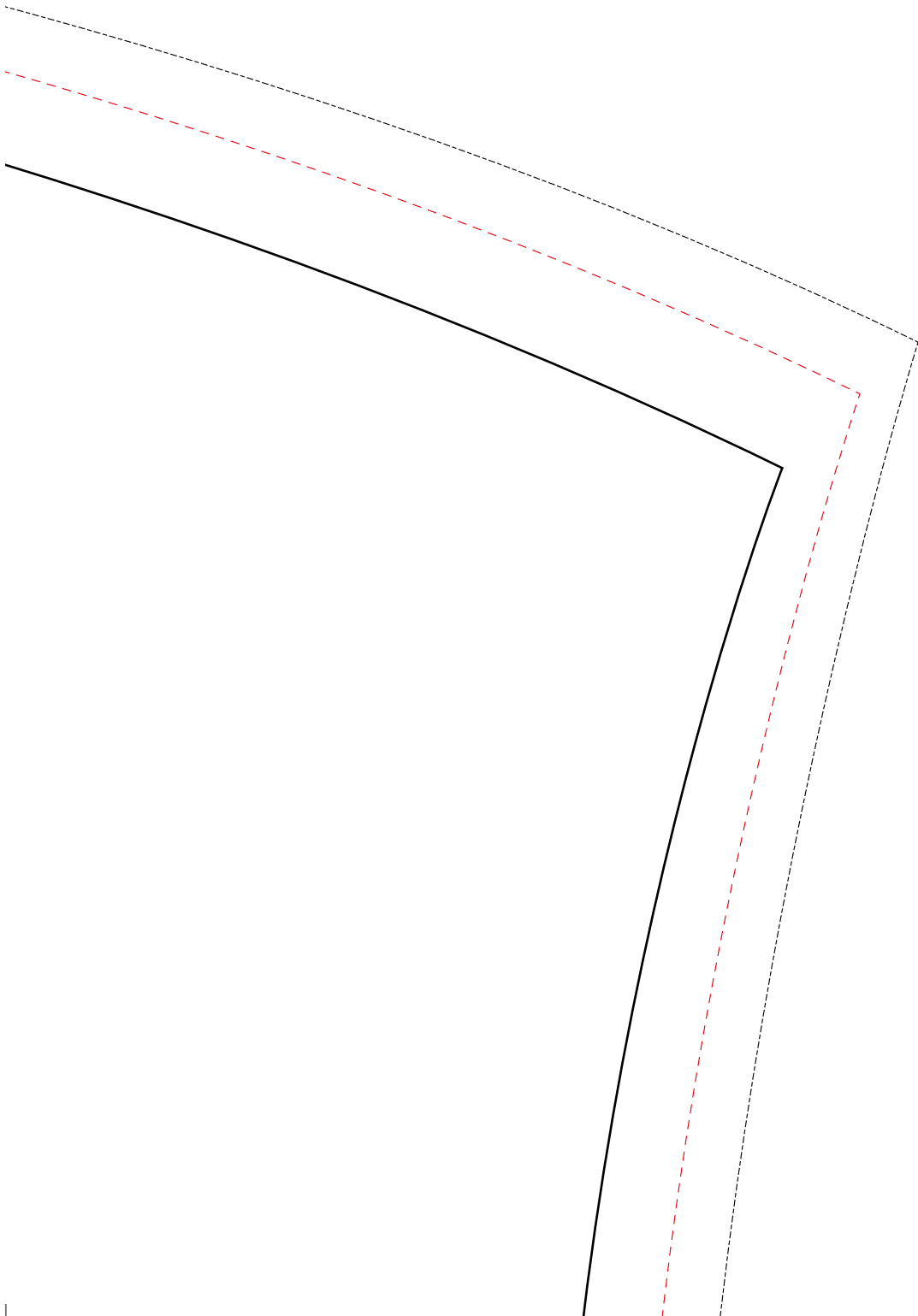


1cm



Fadenlauf





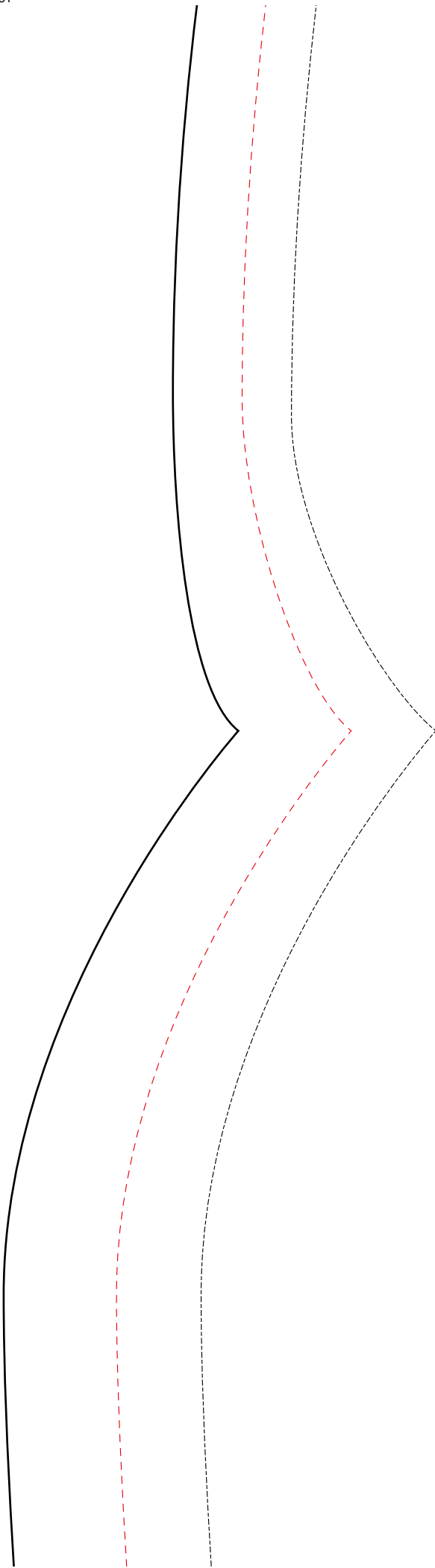
stoffbruch

Fadenlauf

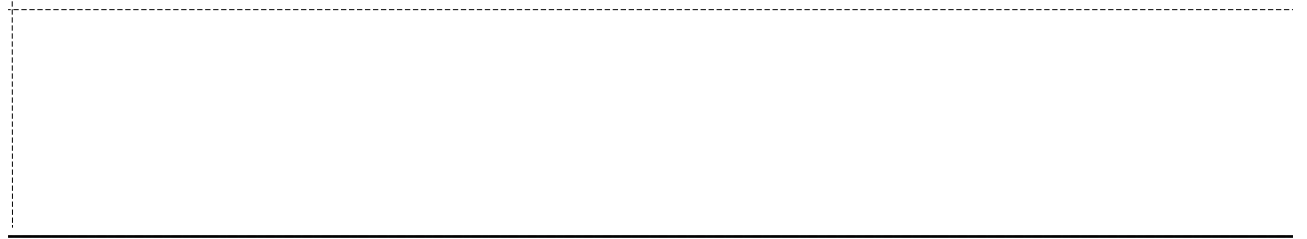


stoffbruch

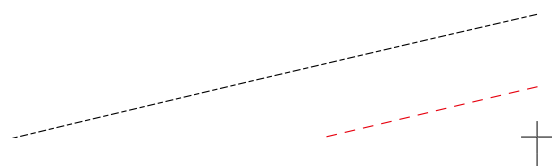


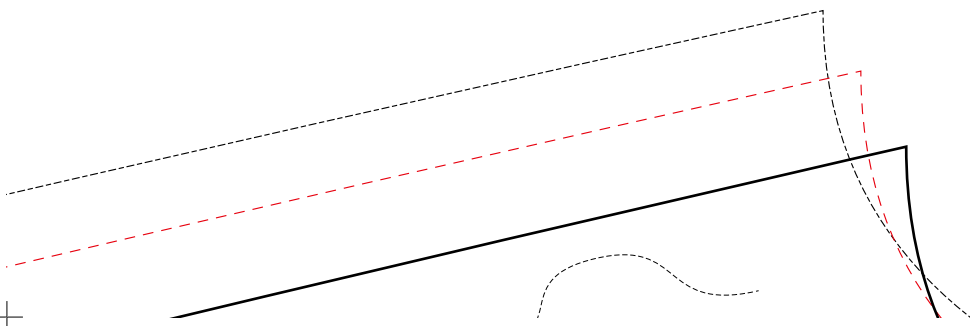
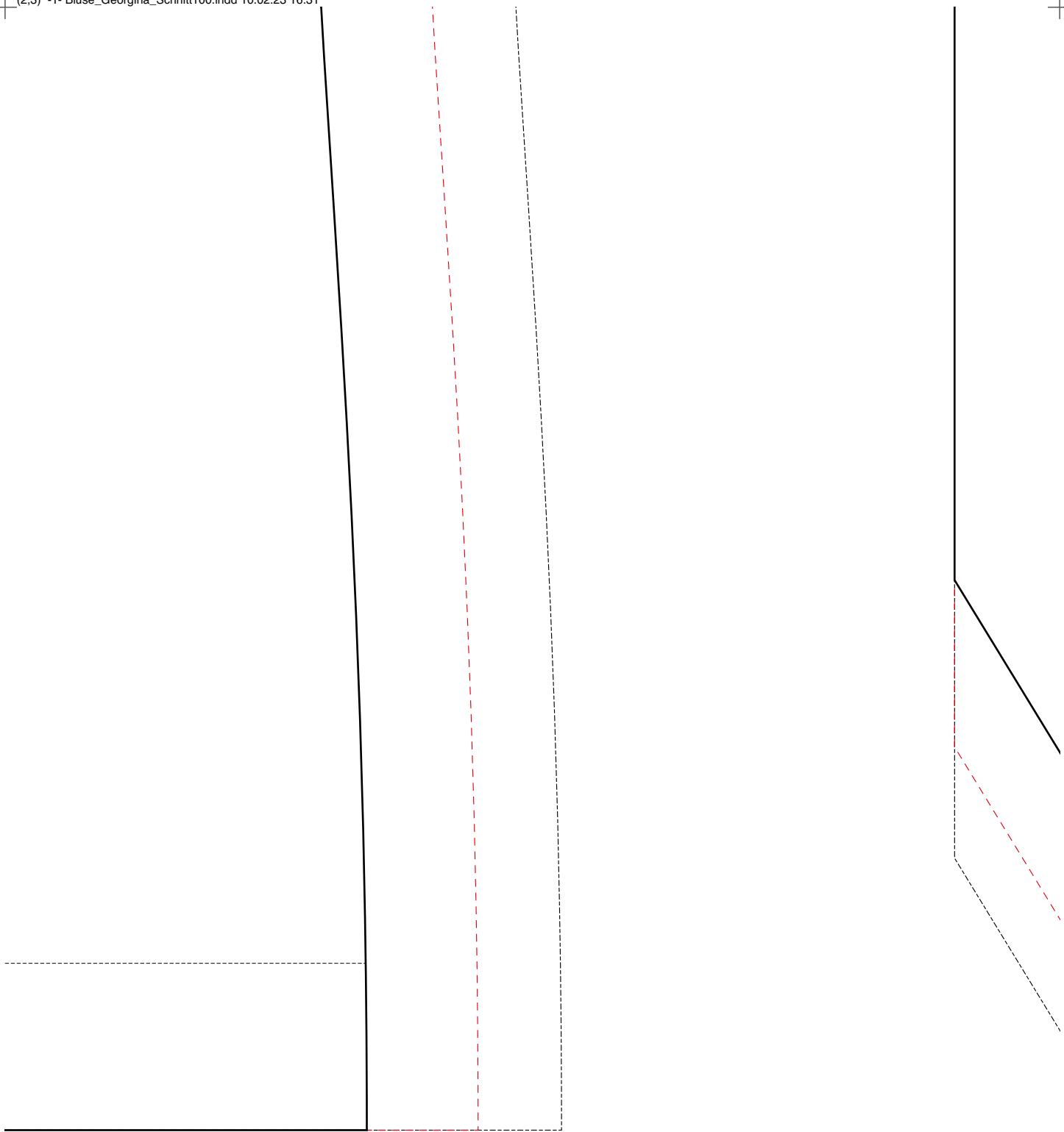


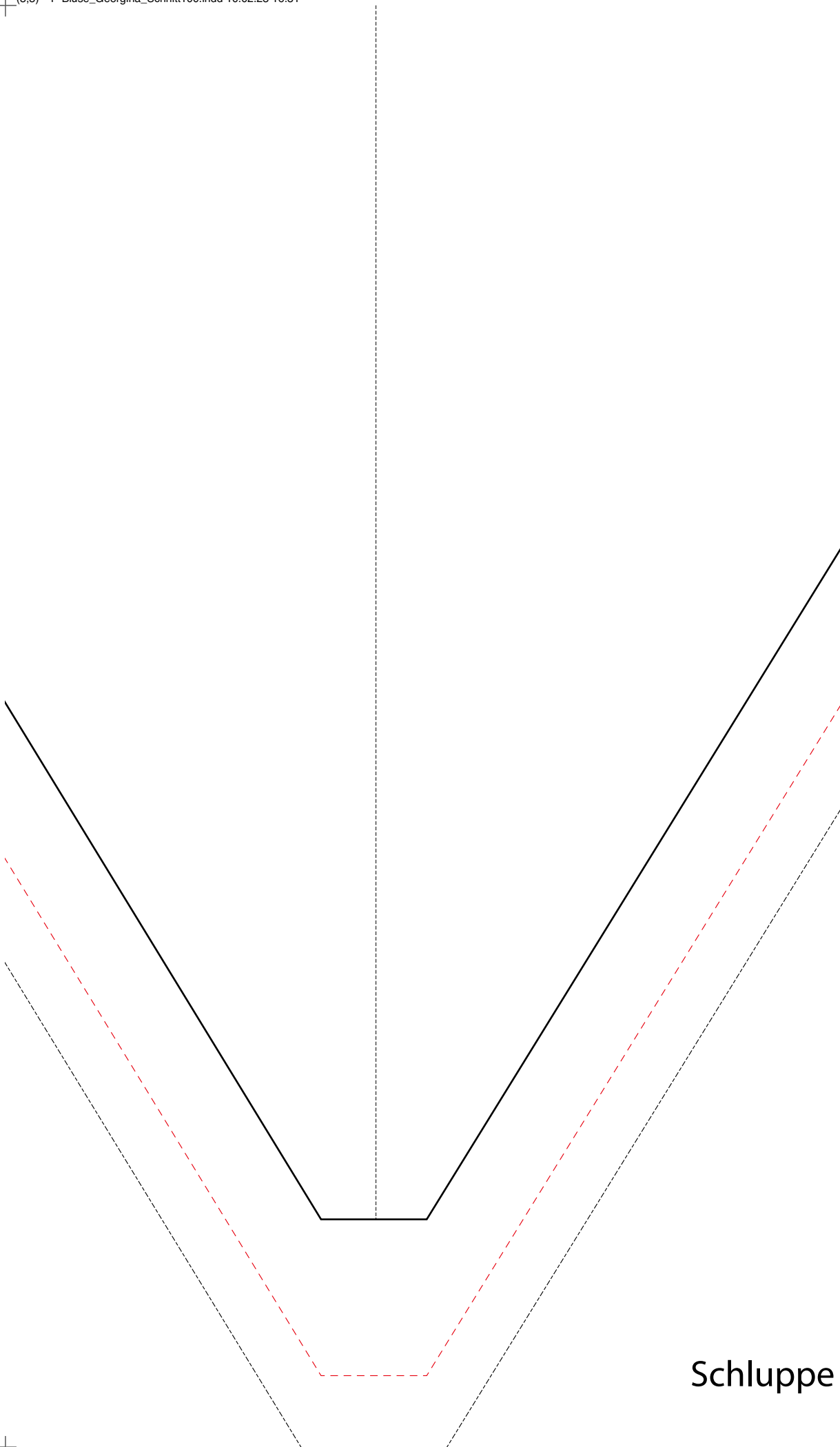




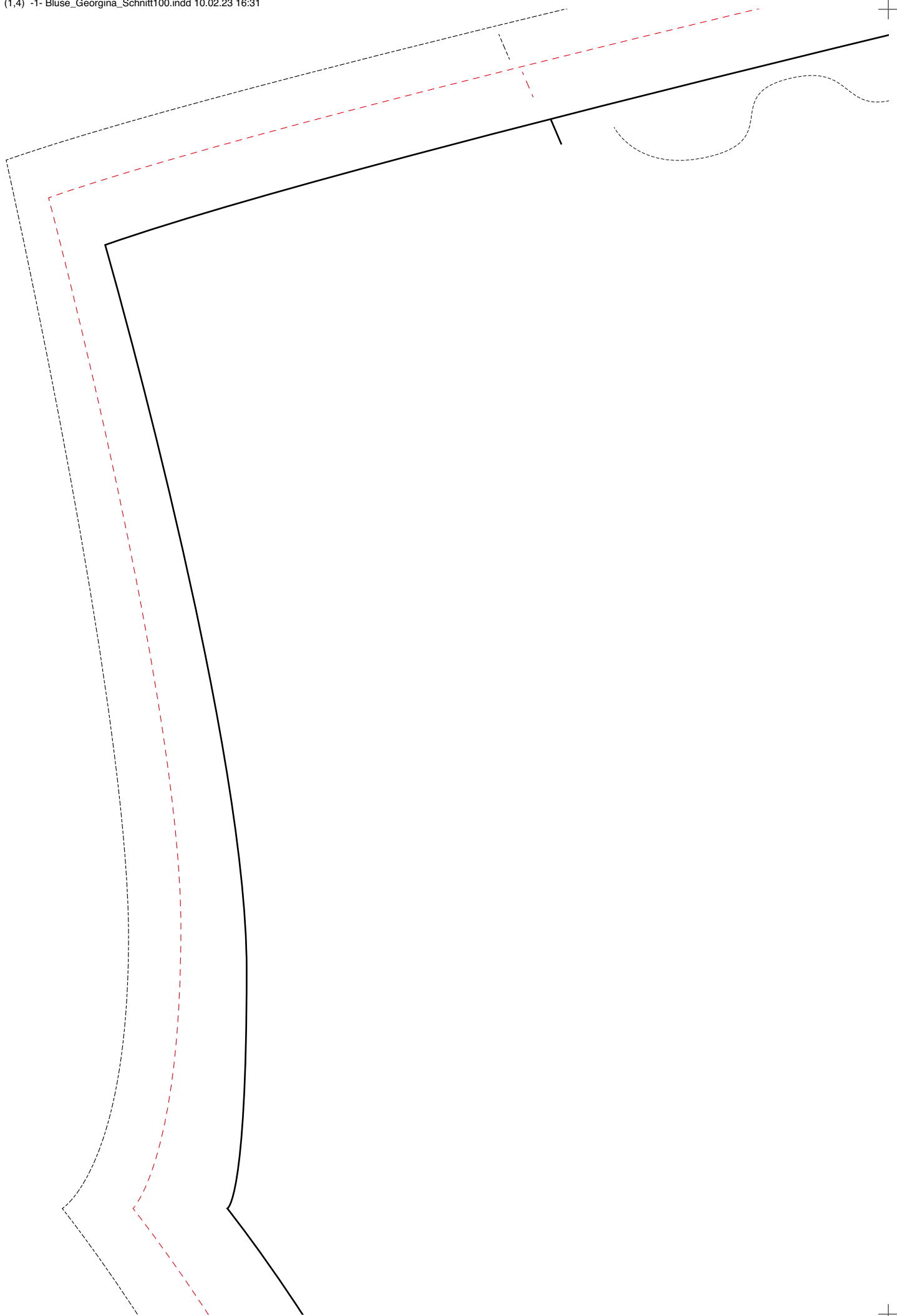
Rückenteil





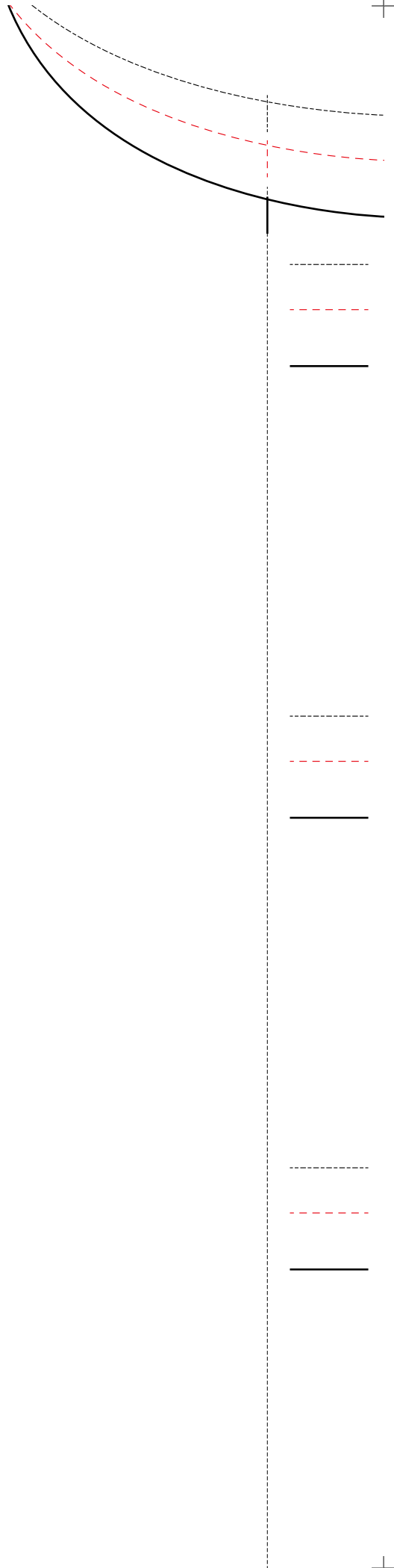


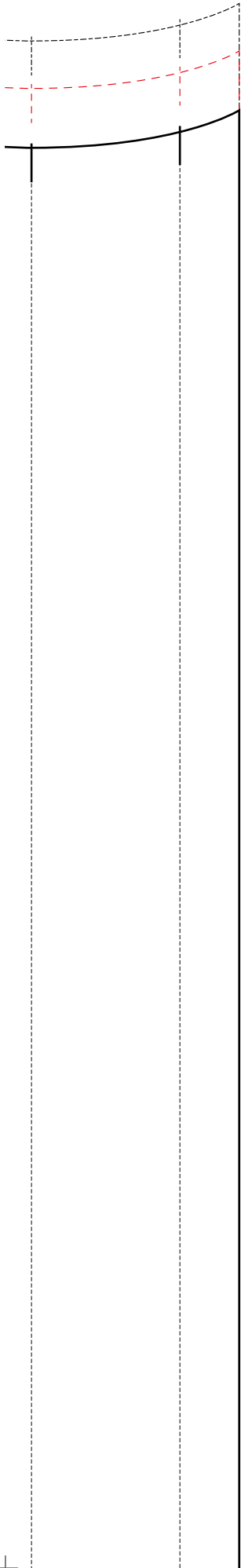
Schluppe

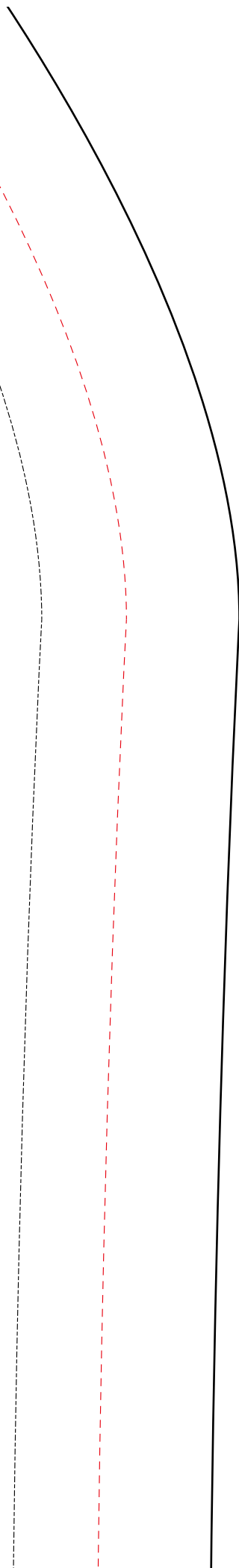


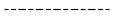


Fadenlauf

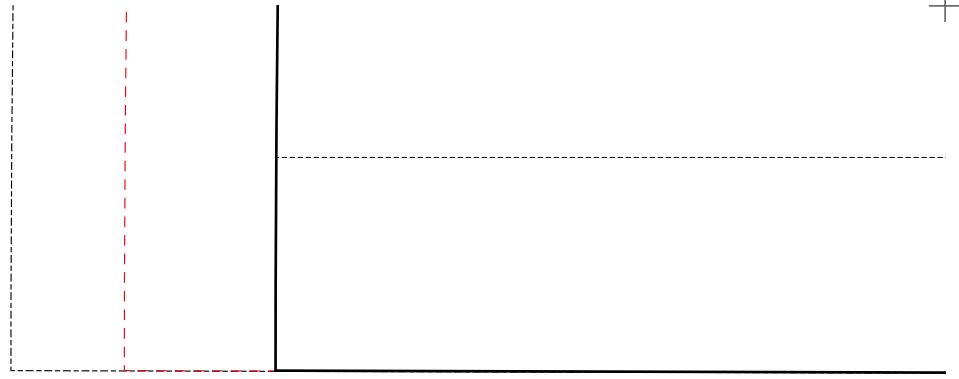












Vorderteil

