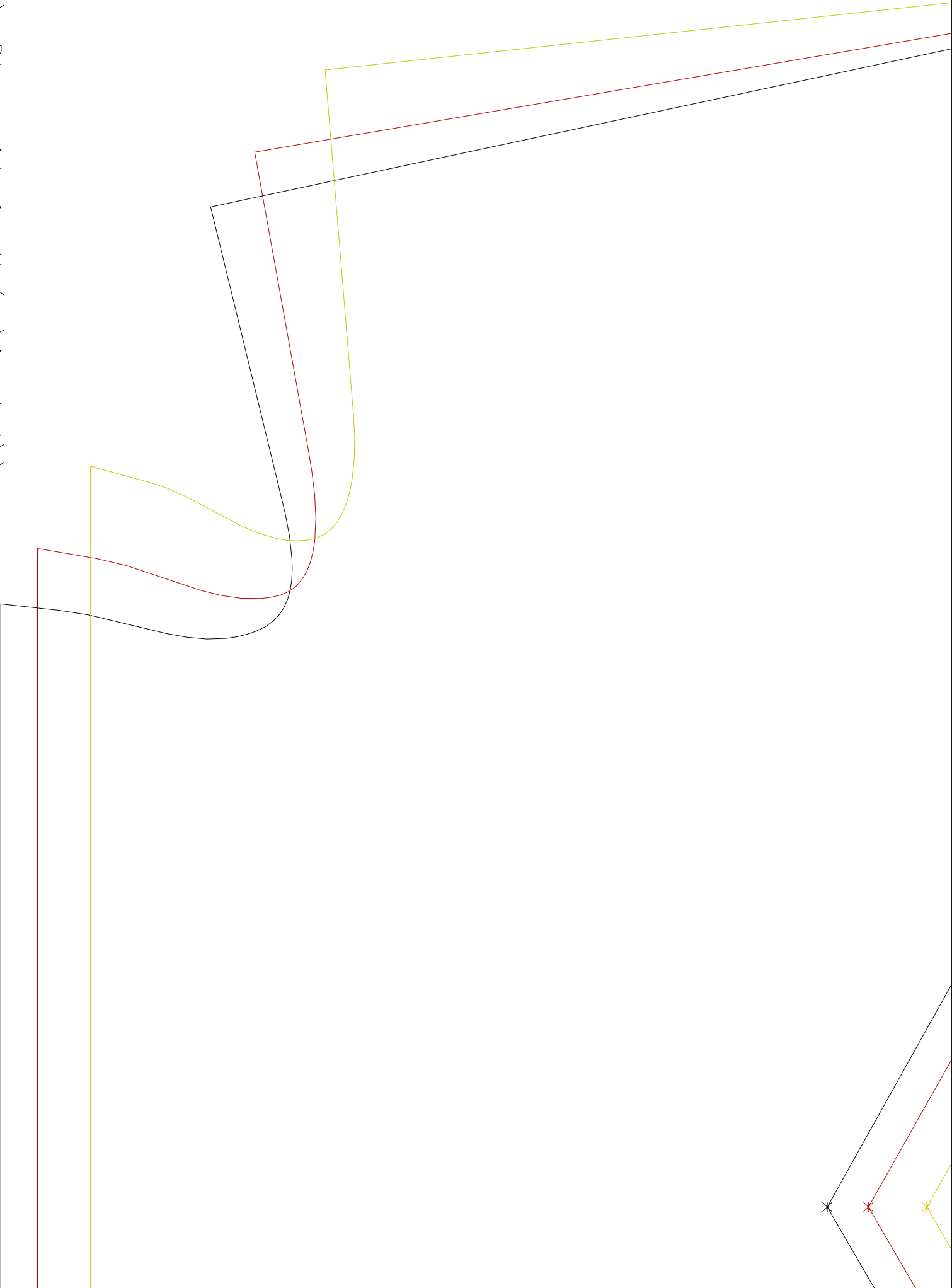


(A, 01): Bluse-midori.mdl (..\Angebot\)



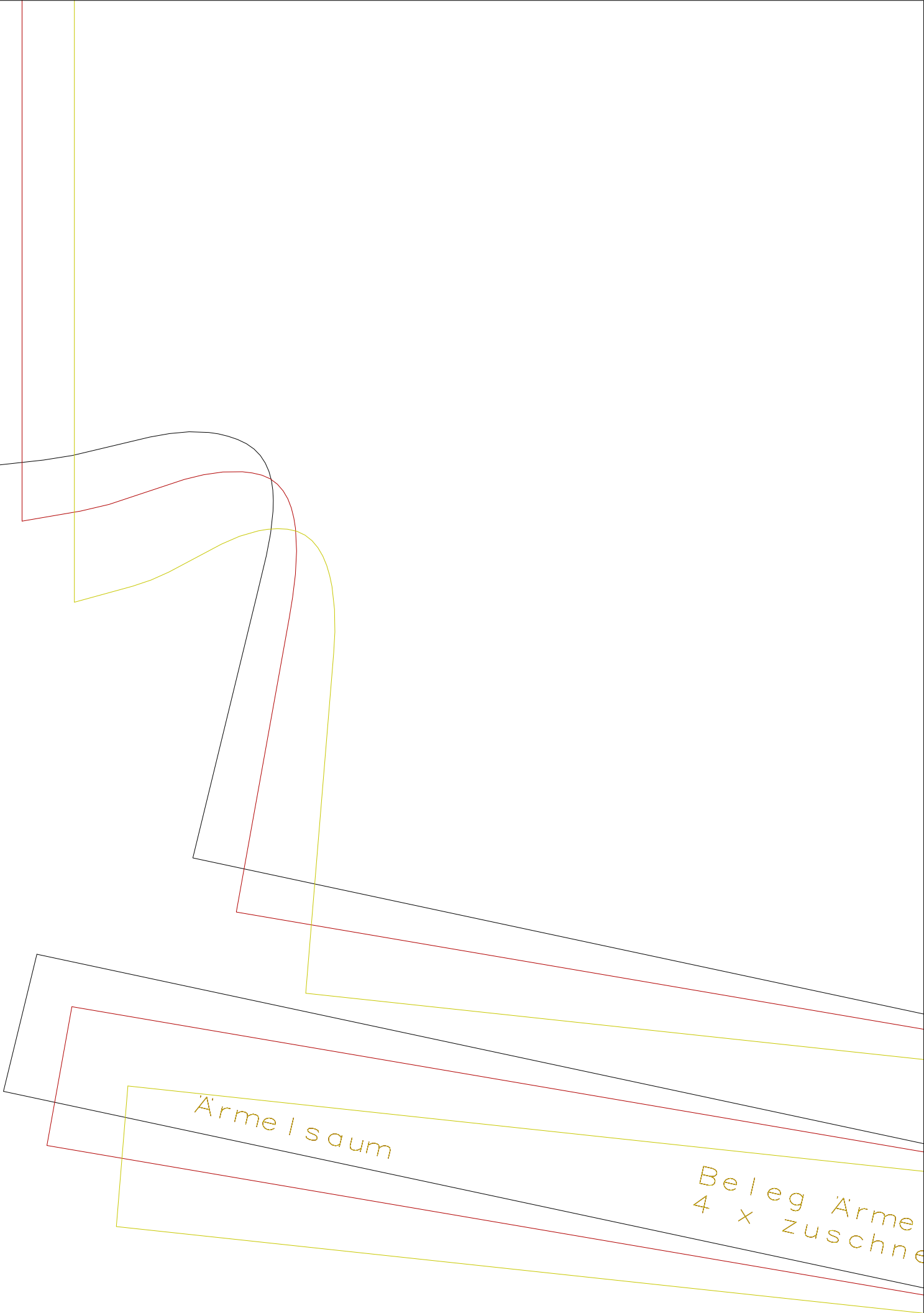
Fadenlauf

Bluse in Flechtoptik

vorder teil

1 x zuschneiden

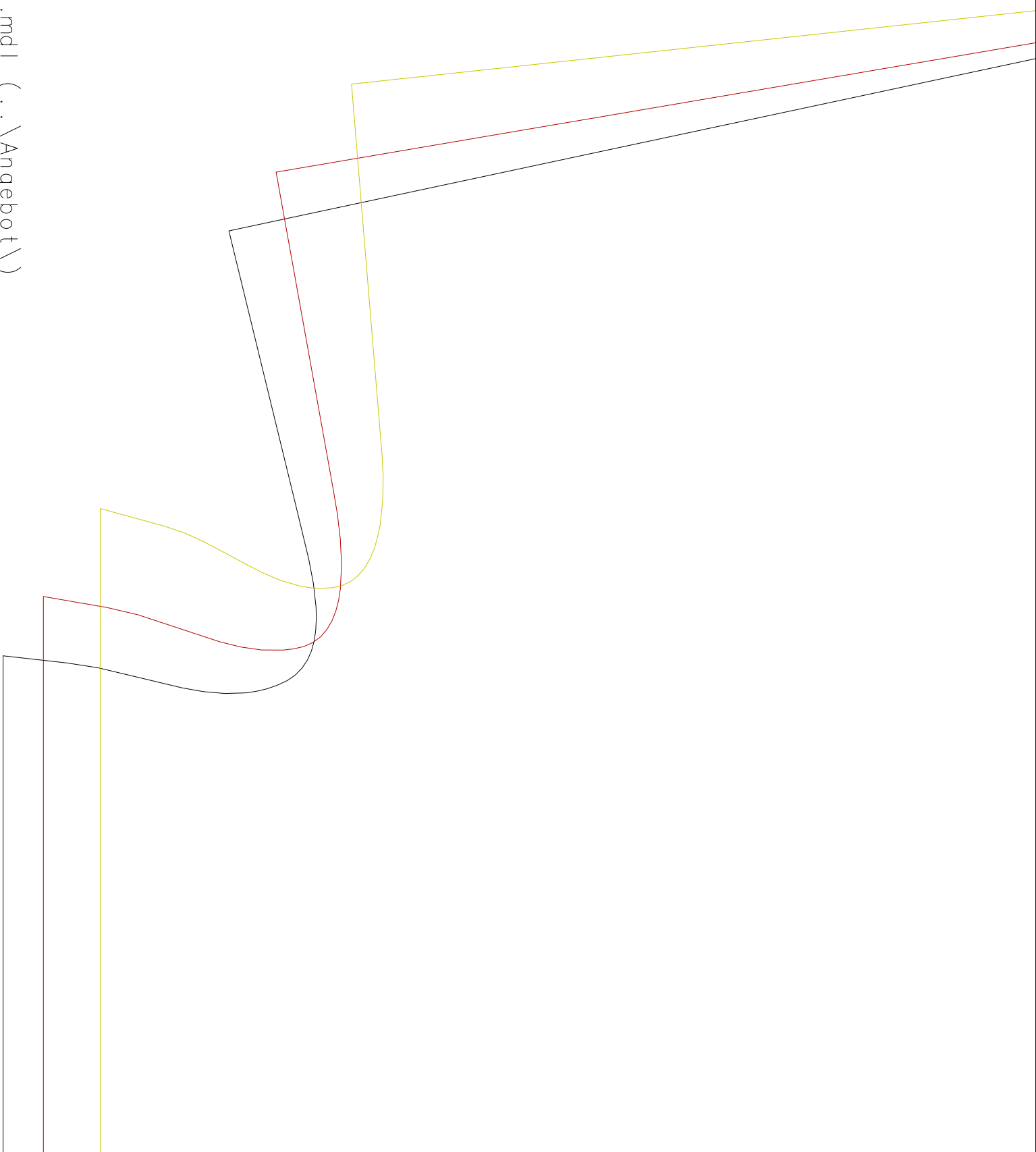
(A, 03) : Bluse-midori.mdl (.. \Angebot\)



Ärmel saum

Beleg Ärmel
4 x zuschne

(A, 04) : Bluse-midori.mdl (..\Angebot\)

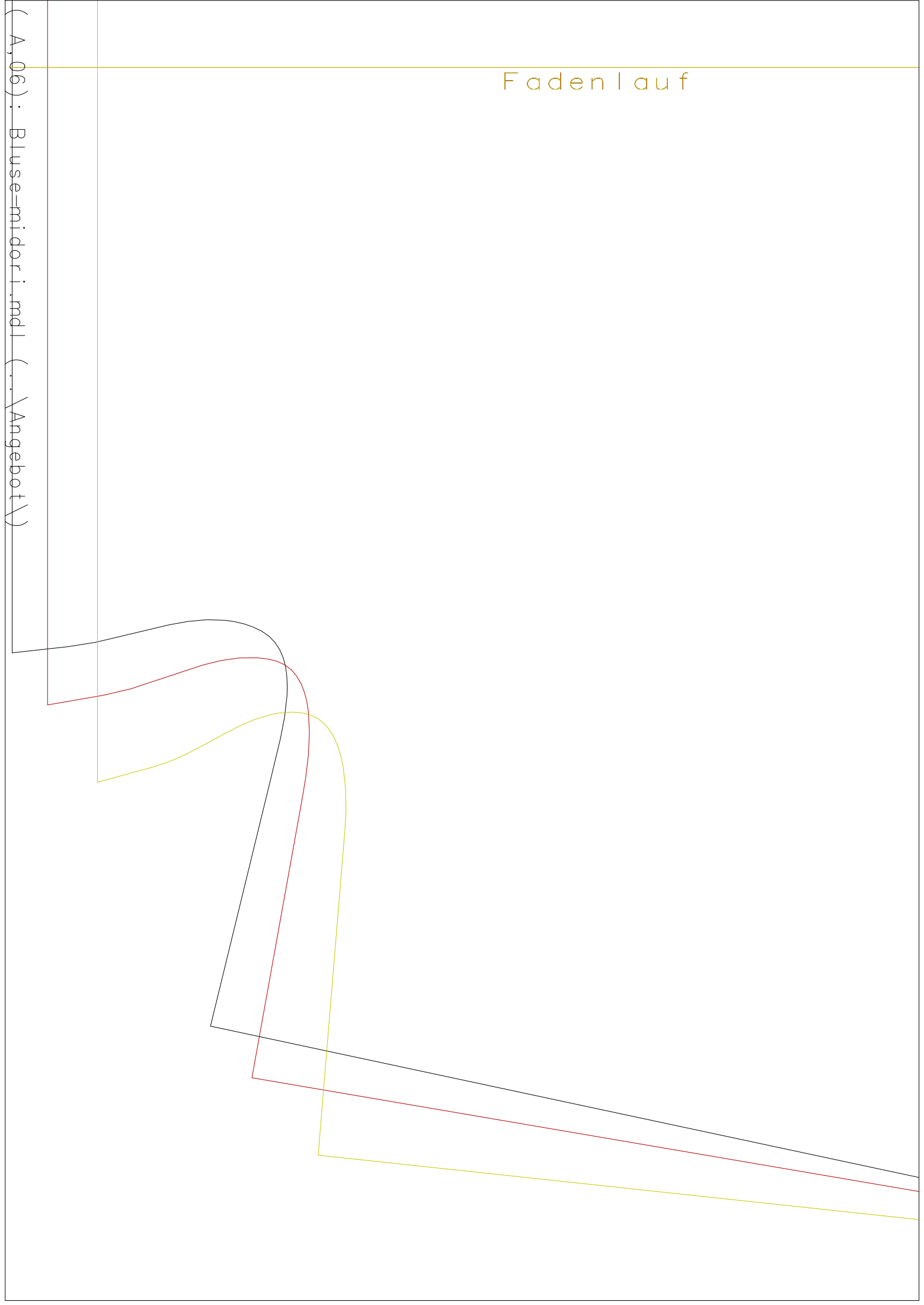


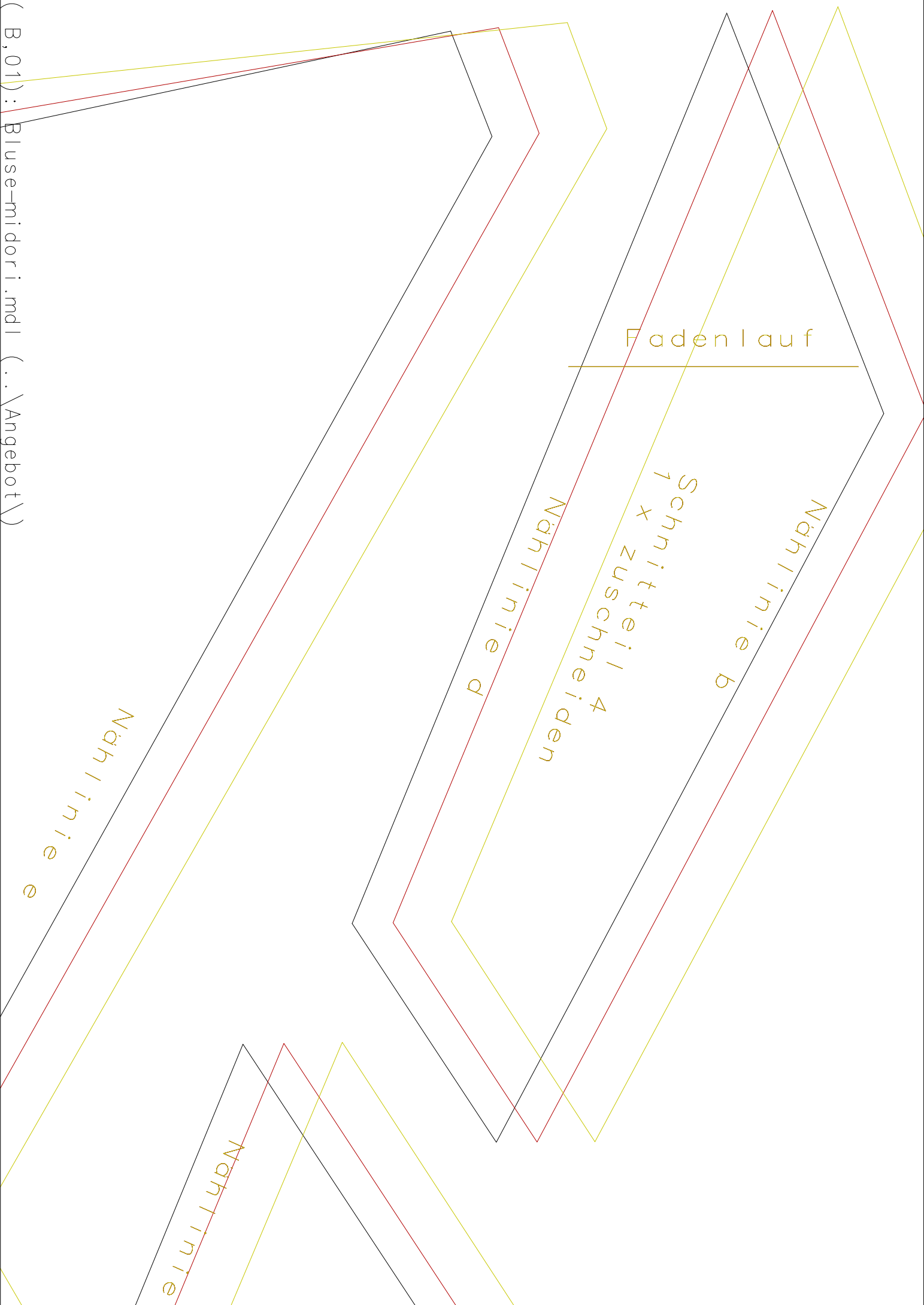
Bluse in Flechtoptik

Rückenteil
1 x zuschneiden

Fadenlauf

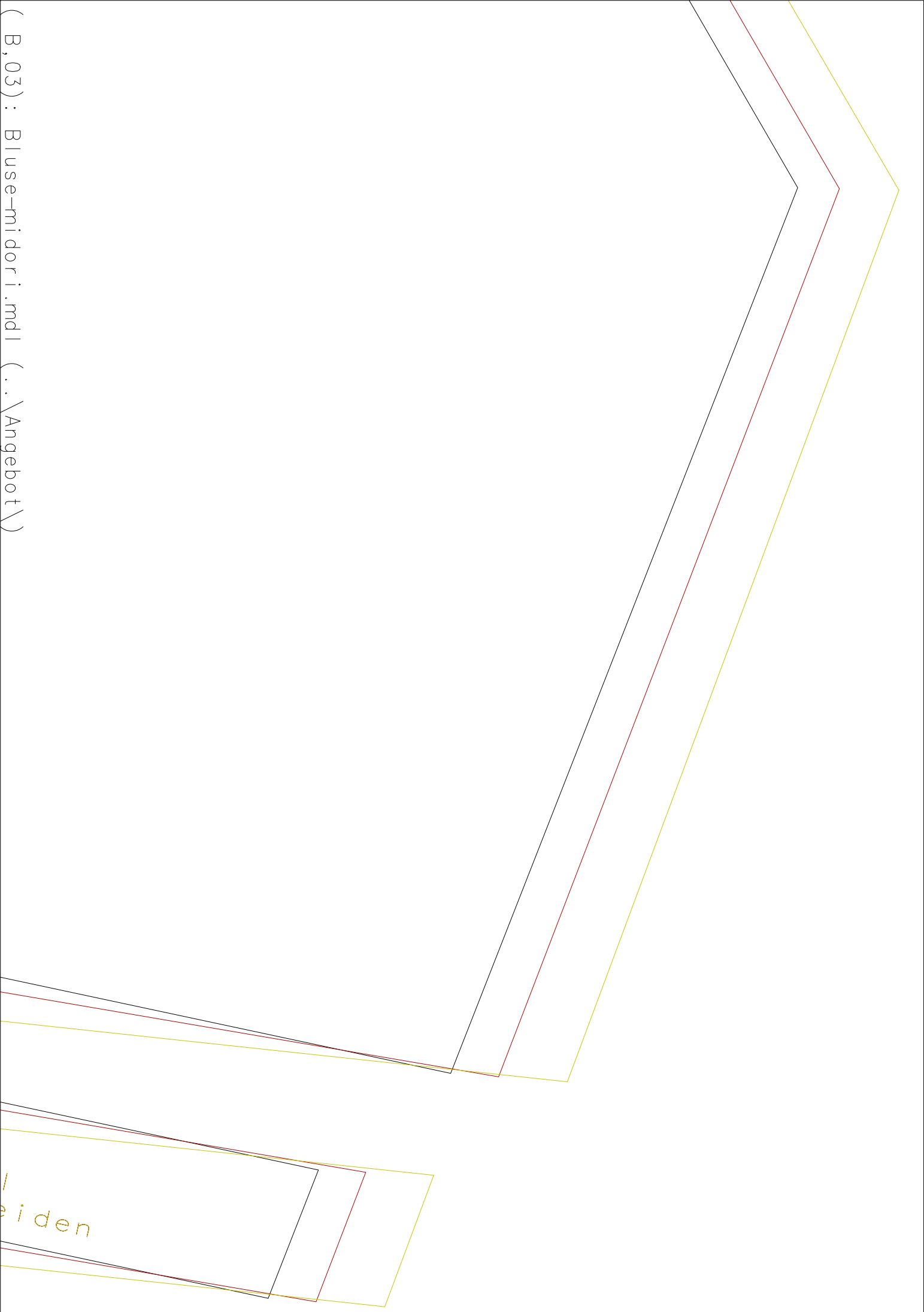
(A,06) : Bluse=midori.mdl (... \Angebot\)





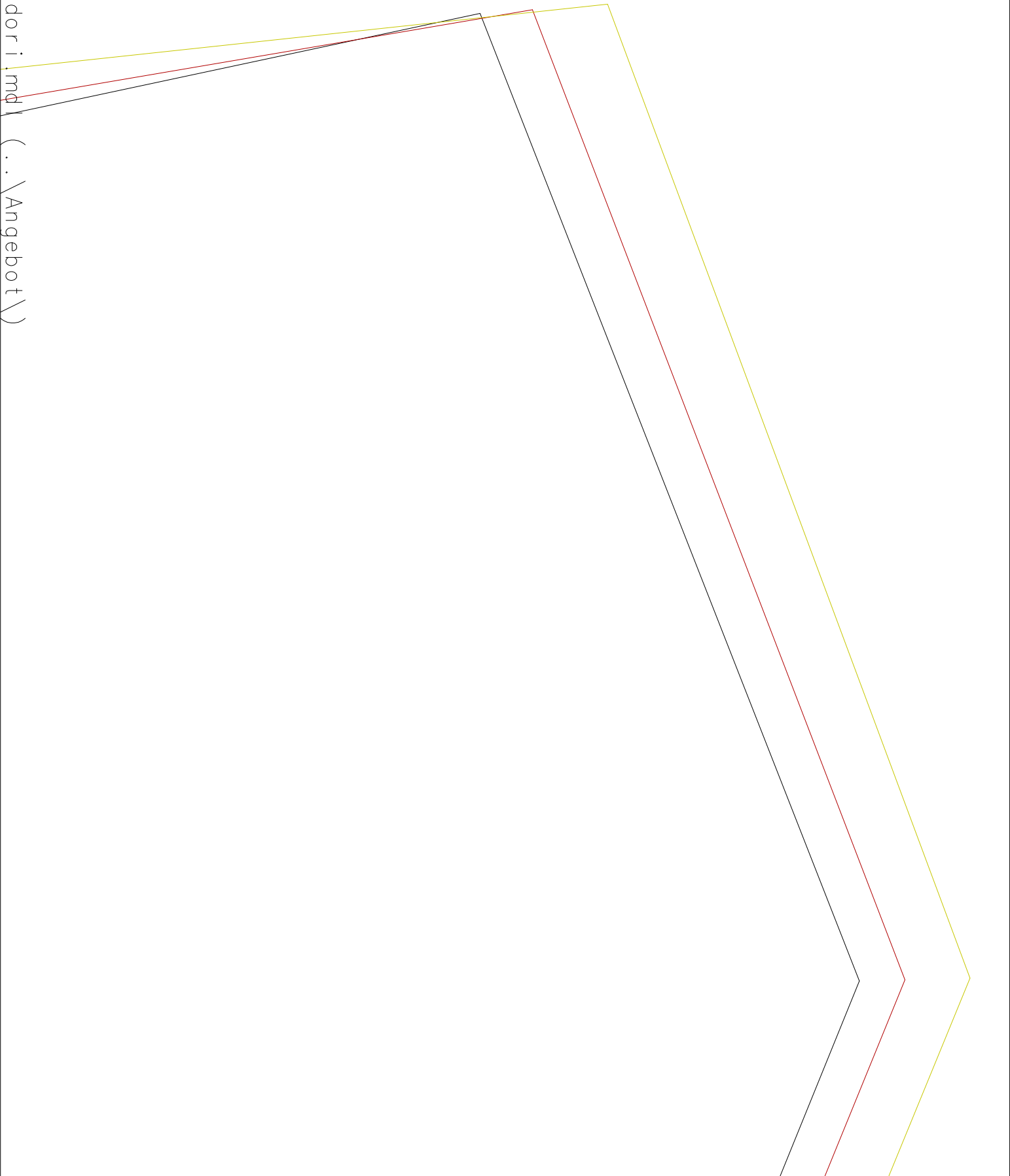


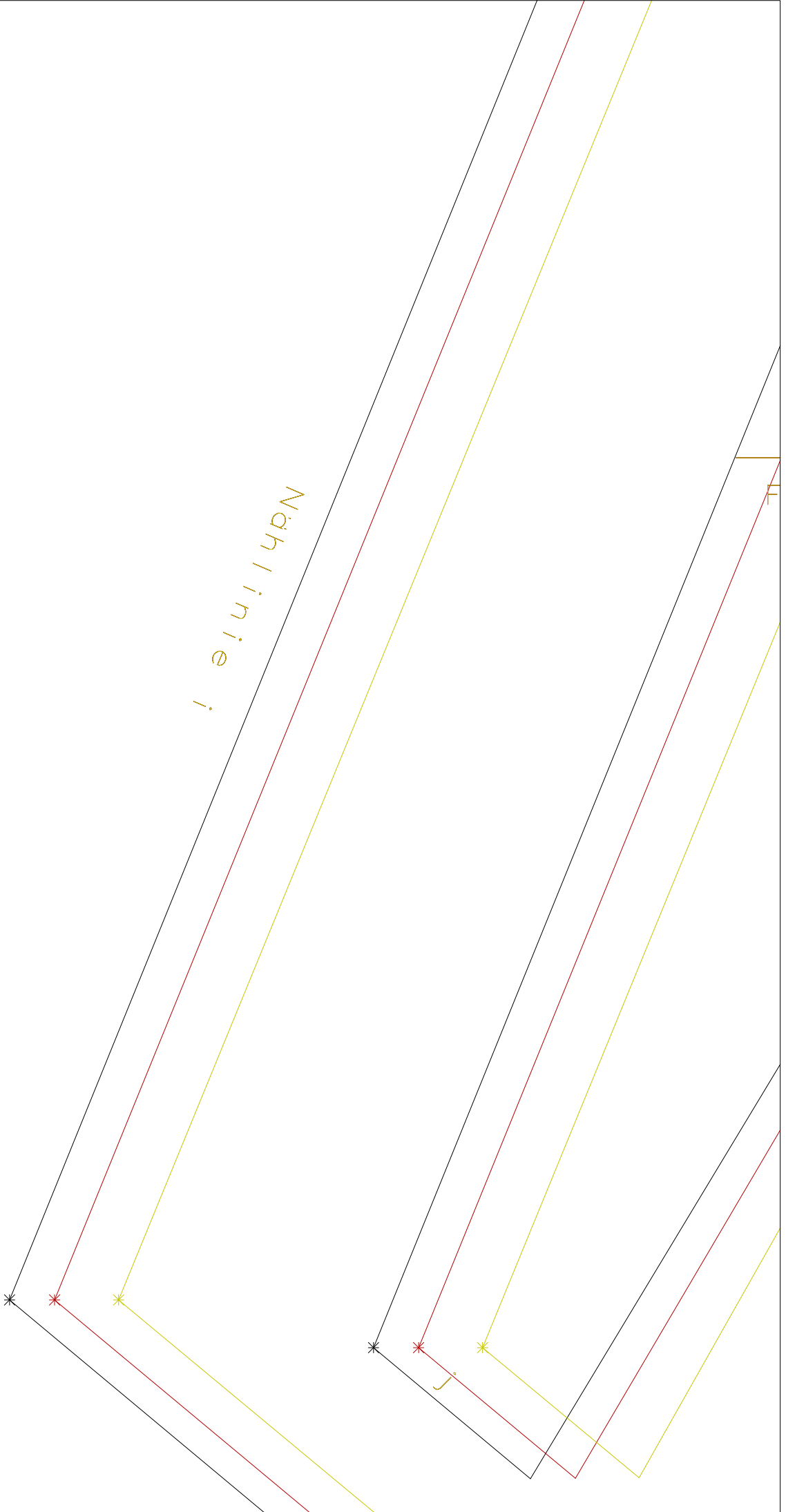
(B, 03) : Bluse-midori.mdl (..\Angebot\)



iden

(B, 04) : Bluse-midori
mdl (.. \Angebot \)

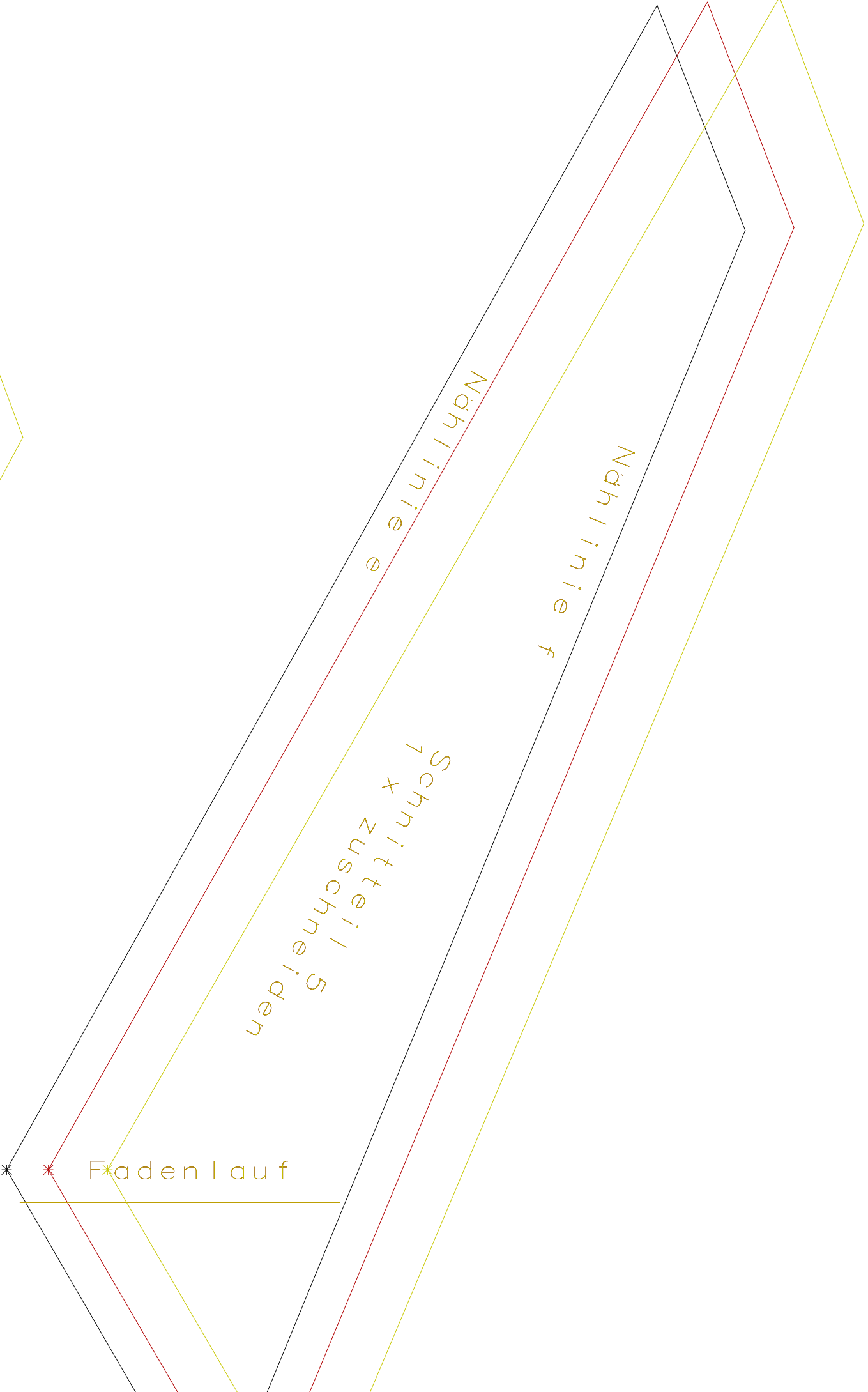




Nählinie j



(B,06) : Bluse-midori.mdl (..\Angebot\)

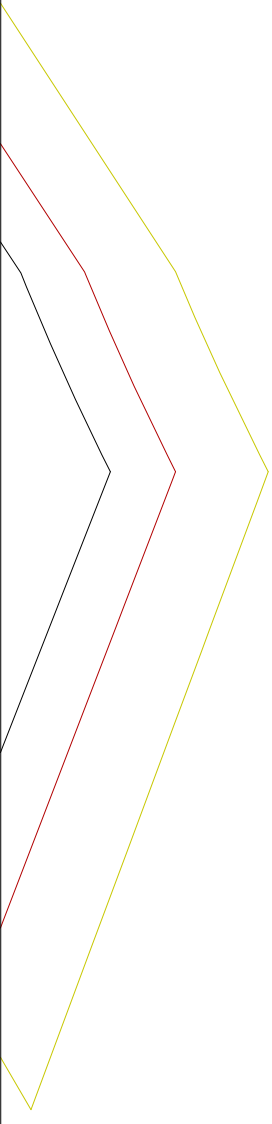
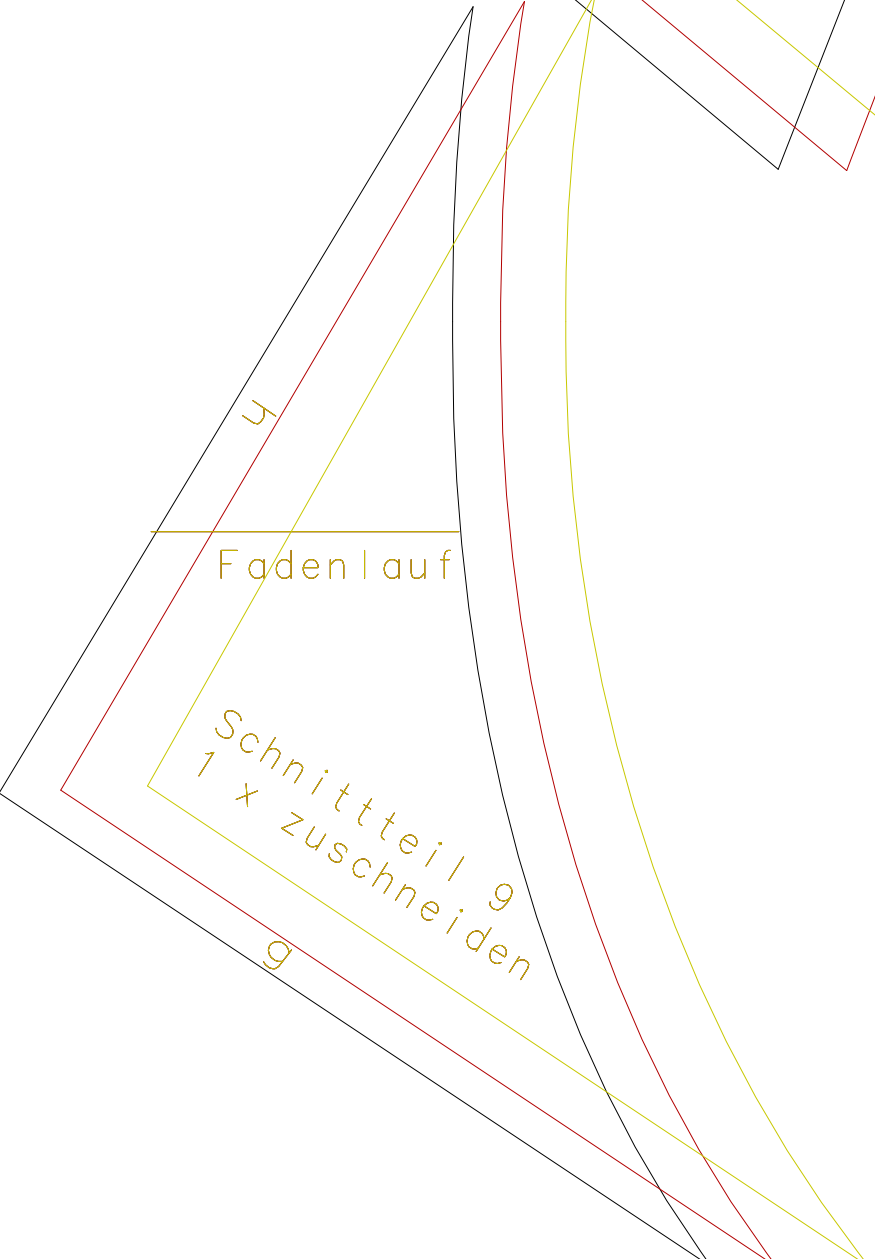
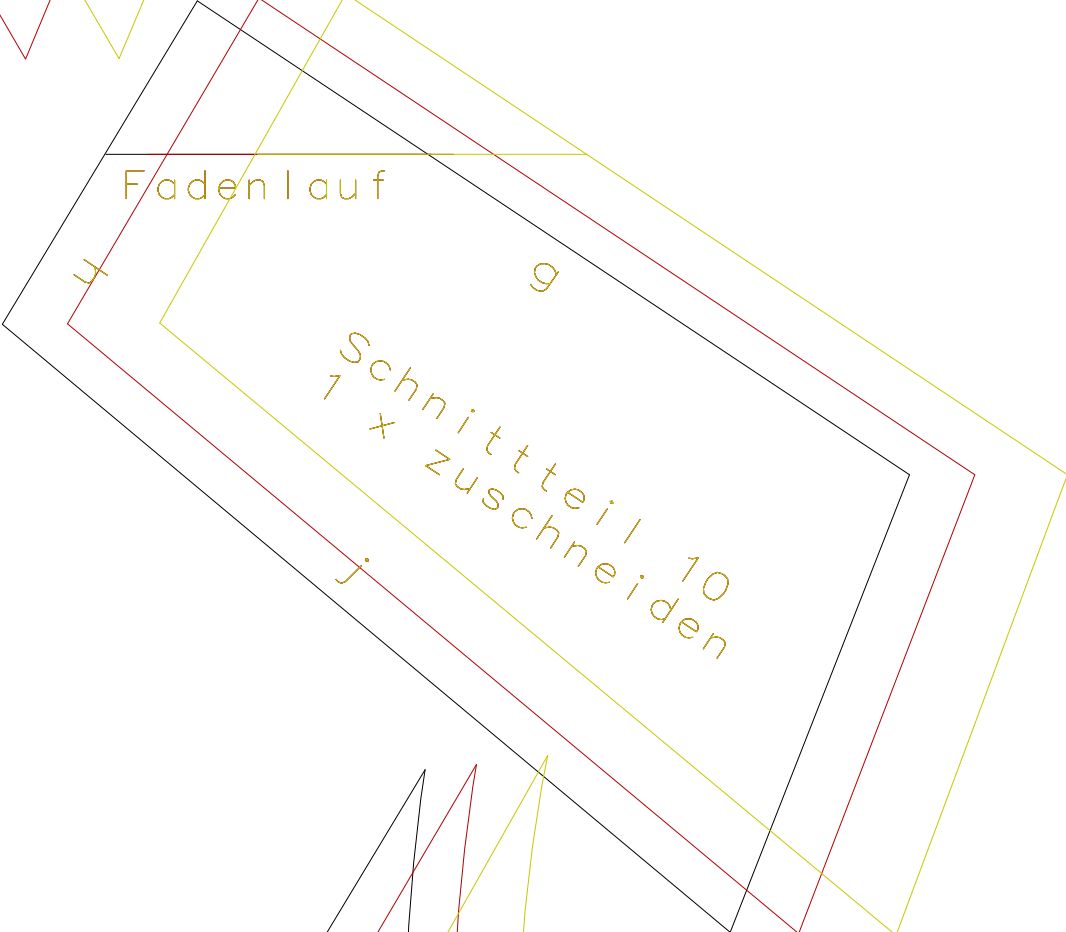


Fadenlauf

Nählinie e

Nählinie f

Schnittteil 5
+ zuschneiden

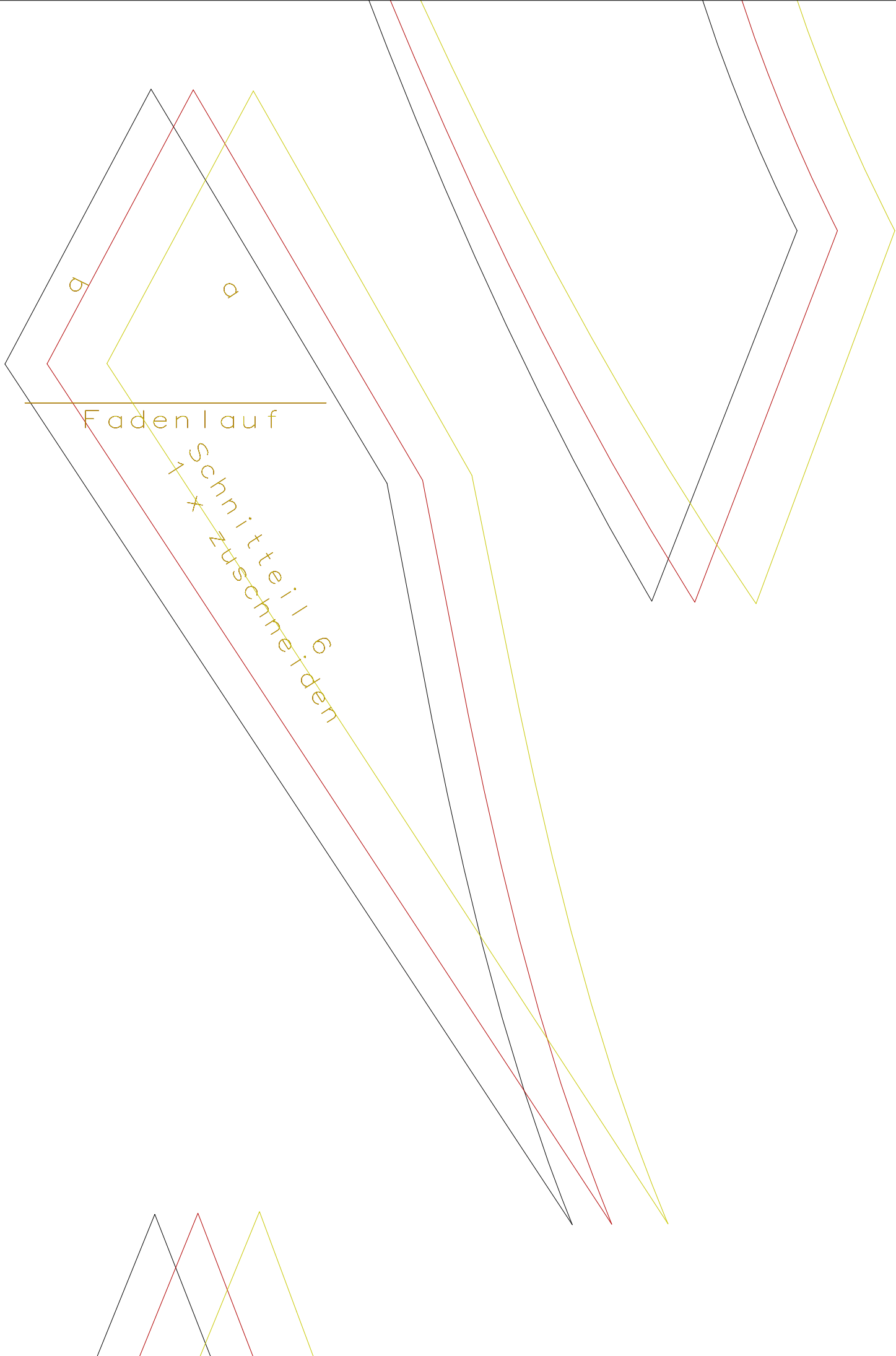




Bluse in Flechtoptik

Beleg VT

1 x zuschneiden



a

a

Fadenlauf

Schnittteil 6
✕ zuschneiden

Bluse in Flechtoptik
Beleg RT
1 x zuschneiden

den Lauf
Schnittteil 8
1 x zuschneiden

