

# Bluse Indra

Kollektion Frühling Sommer 24

Größe 36-38 /40-42 /44

Initiative<sup>e.V.</sup>  
Handarbeit





Initiative<sup>e.V.</sup>  
Handarbeit

Bluse Indira

Kollektion Frühling Sommer 24

Größe 36-38 /40-42 /44

1cm

Größe

36/38 ———

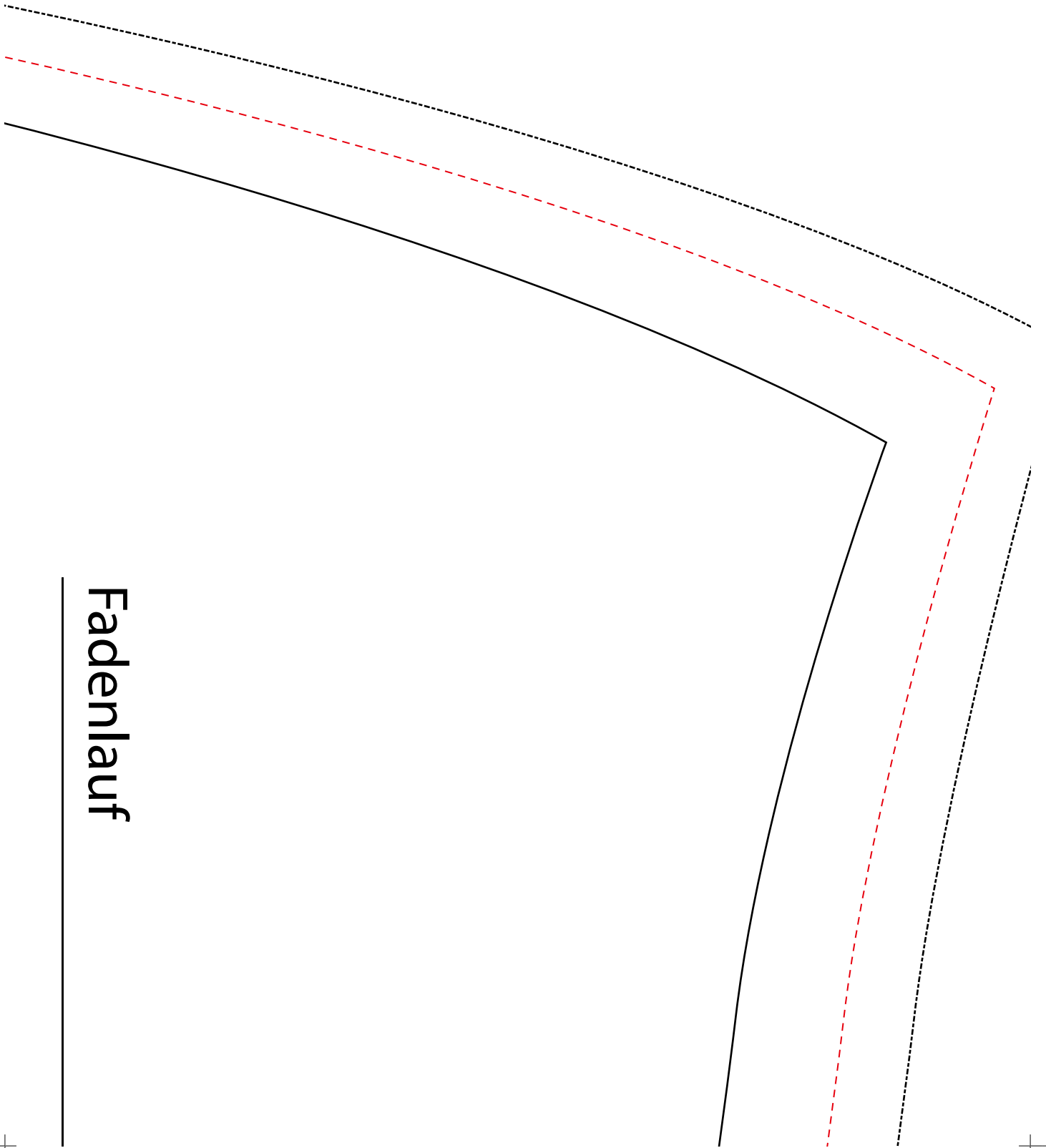
40/42 - - - - -

44 .....

hintere  
Mitte

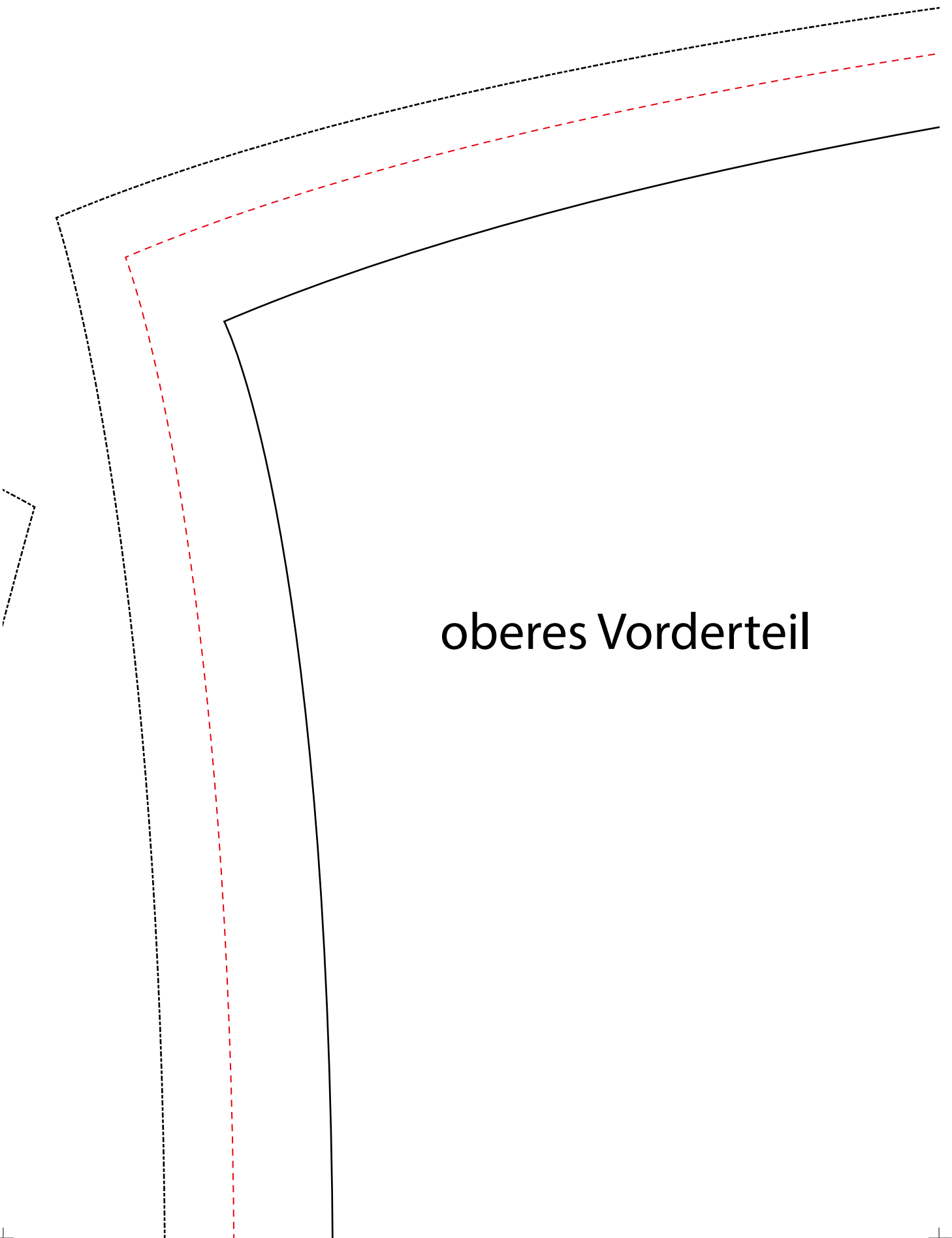
oberes Rückenteil



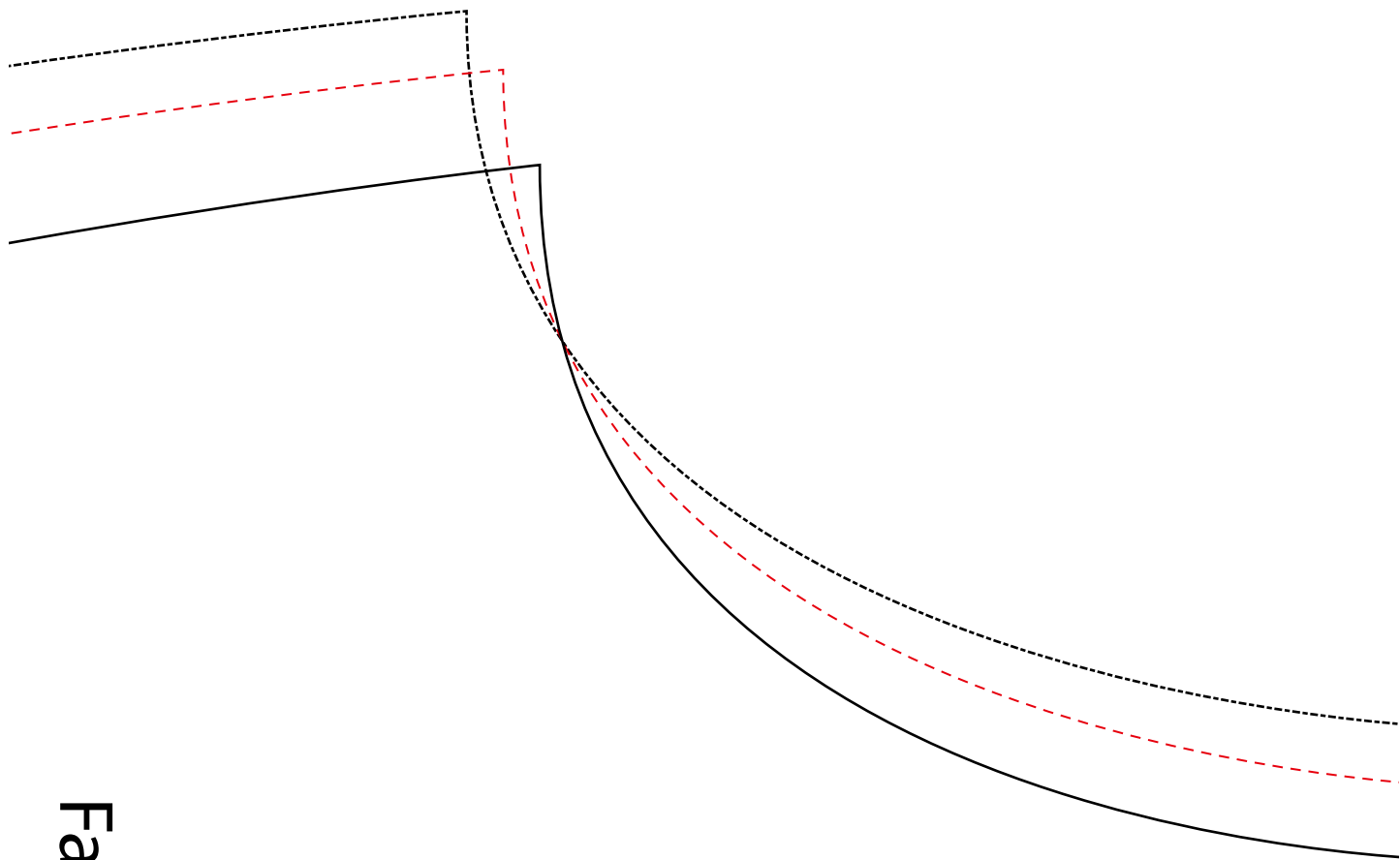


Fadenlauf





oberes Vorderteil

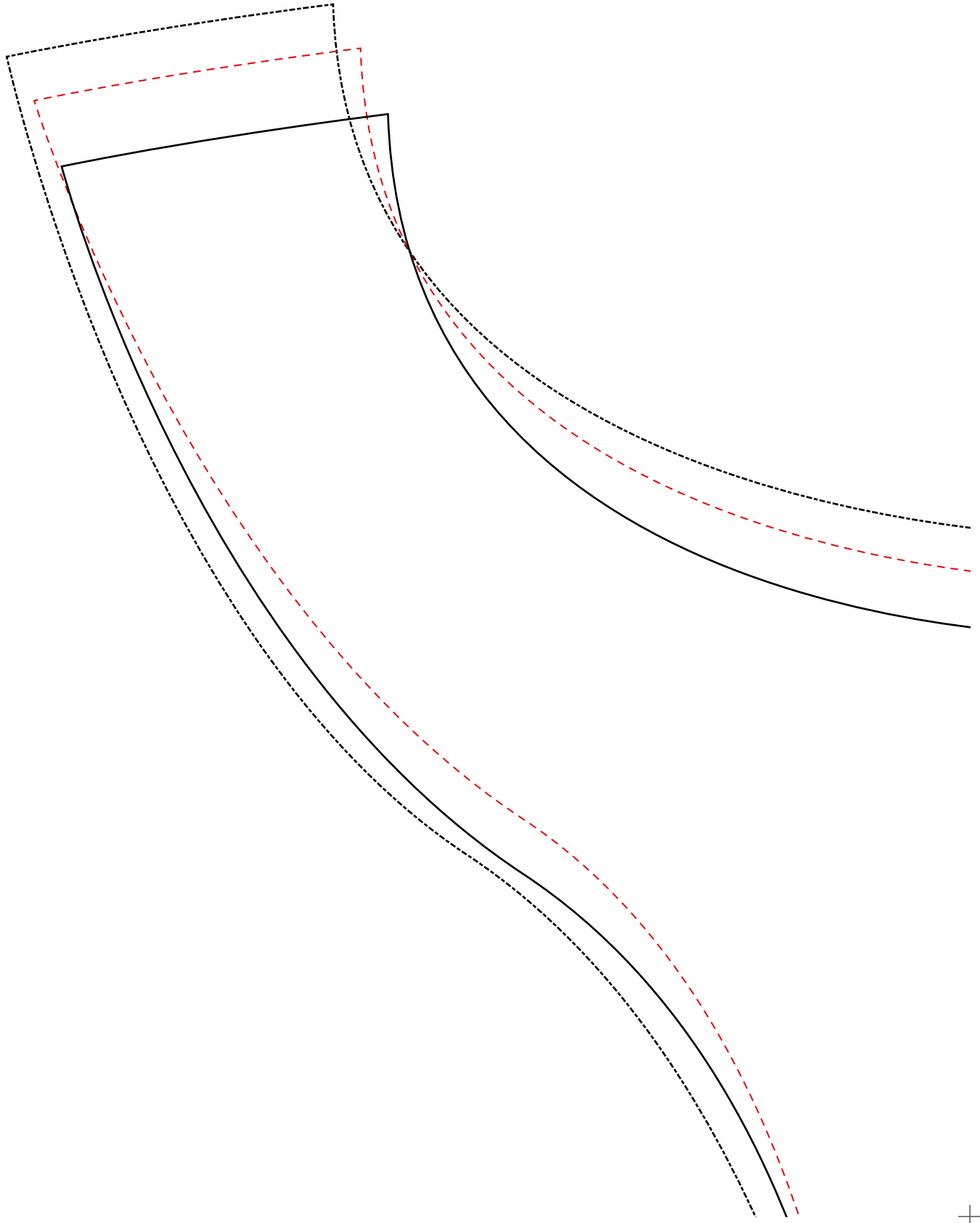


Fadenlauf



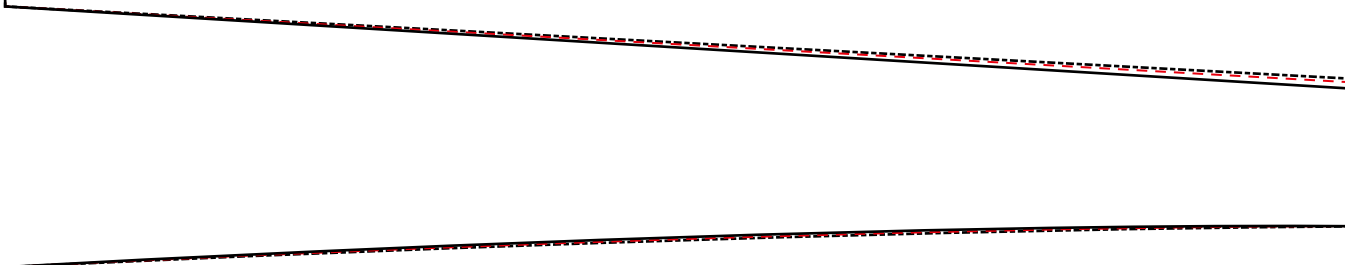
”

otten



offen

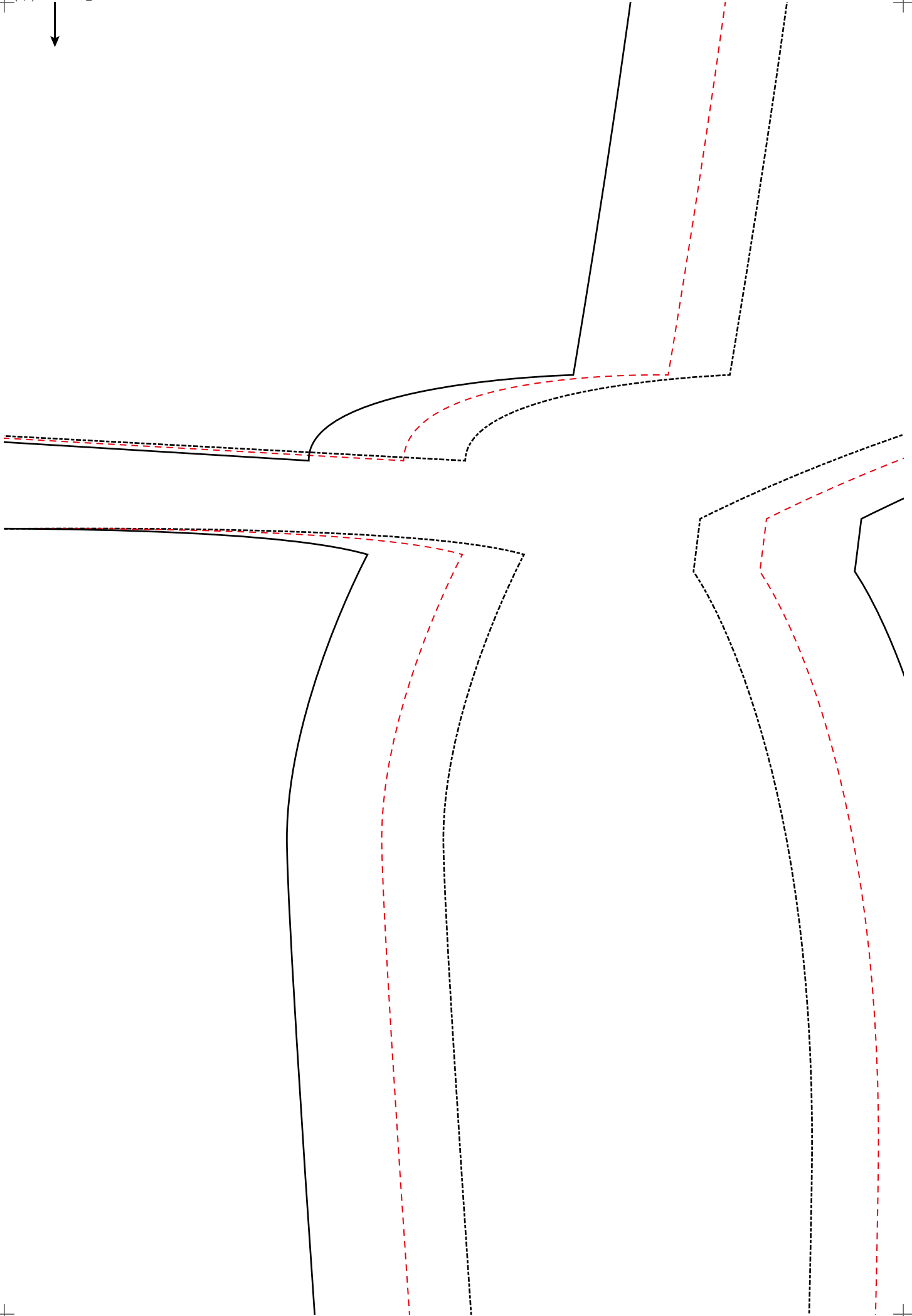


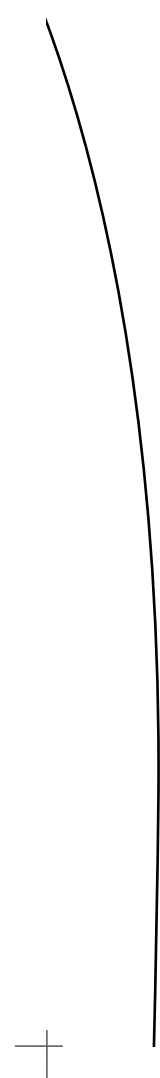
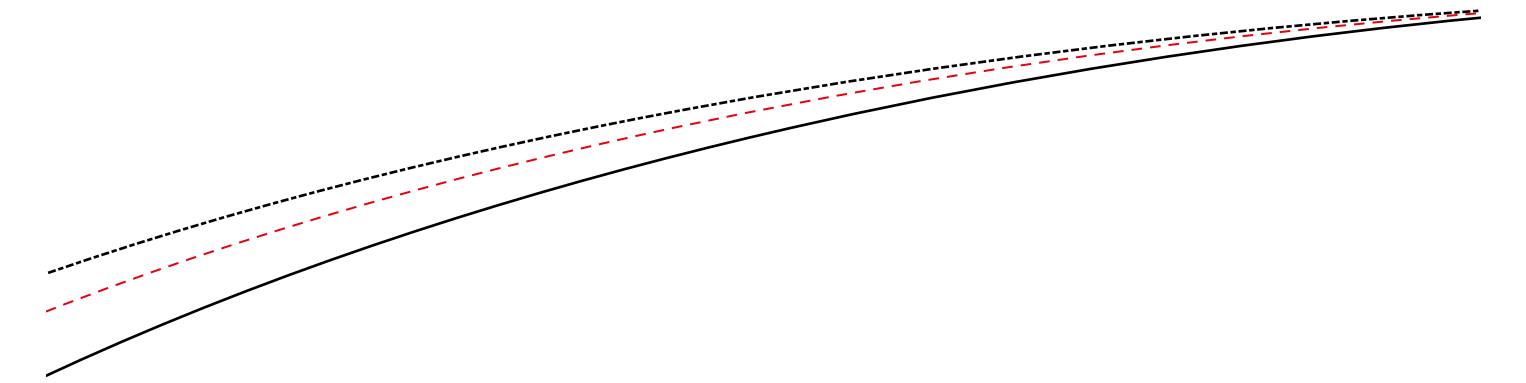
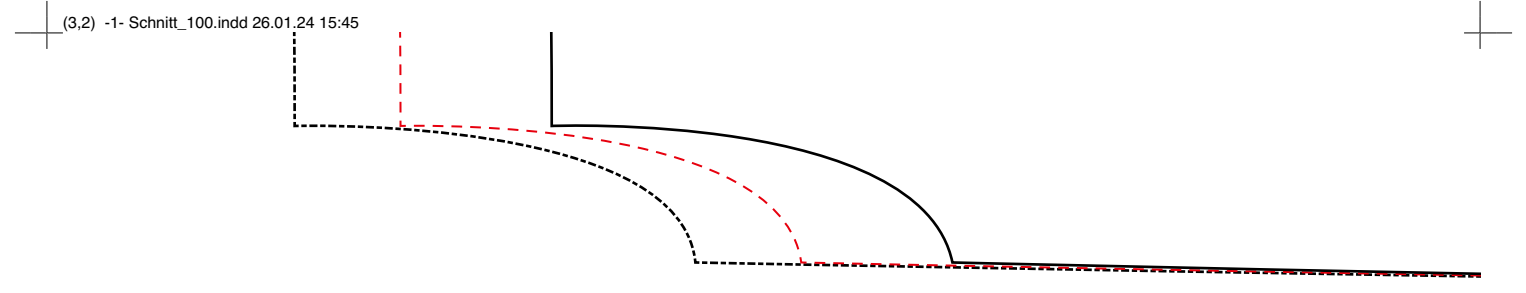


Fadenlauf

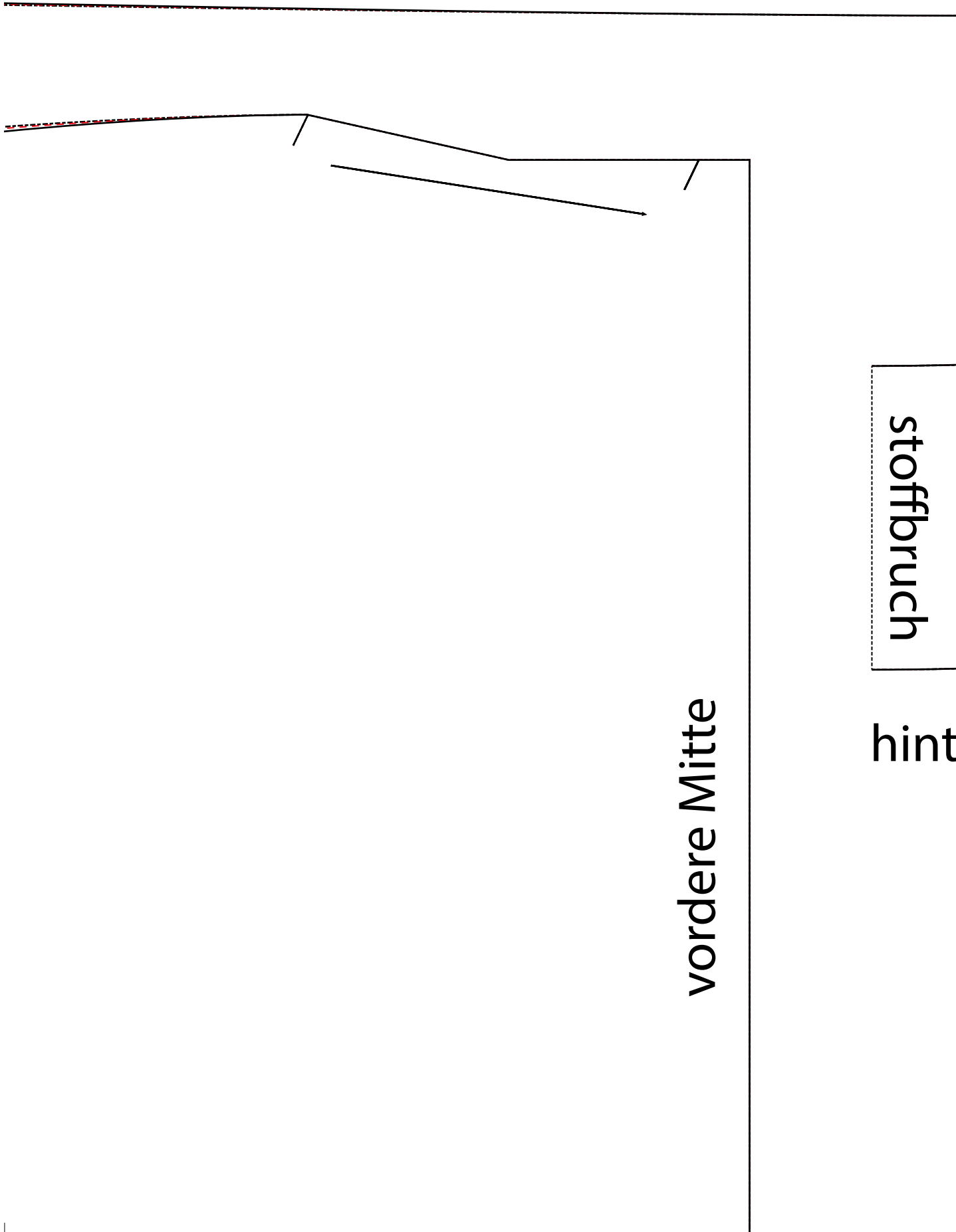
hintere Mitte







Fadenlauf

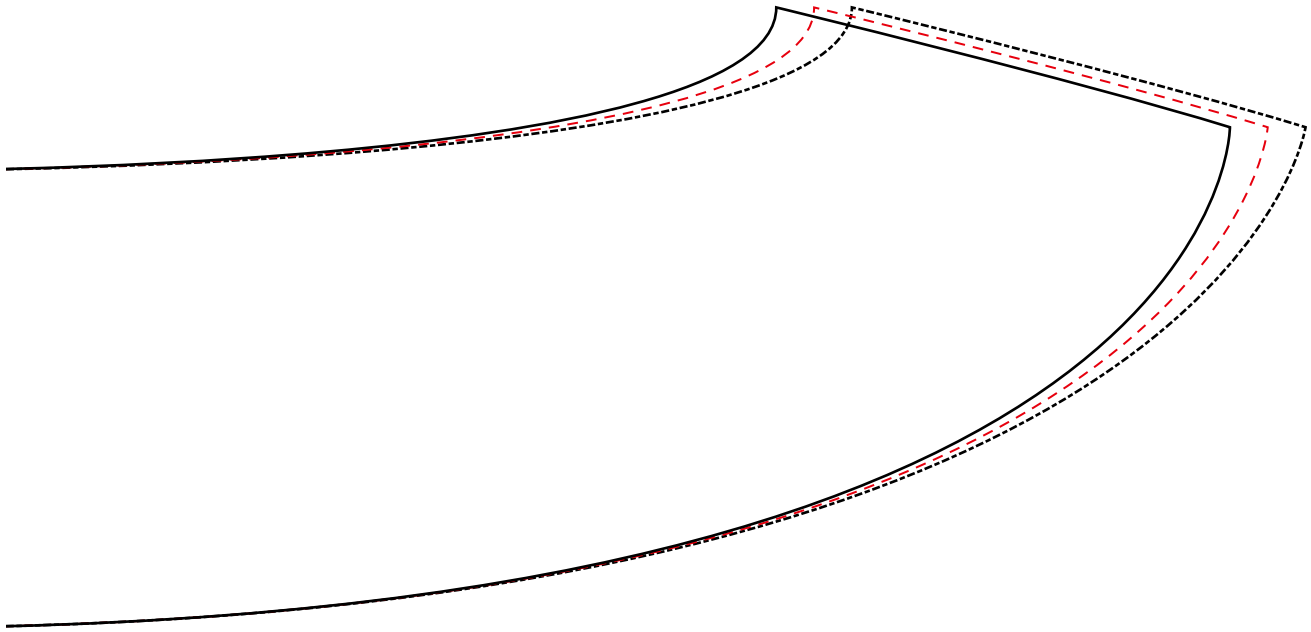


stoffbruch

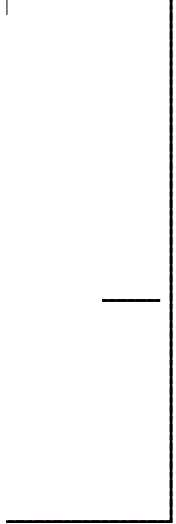
hint

vordere Mitte

vorderer Besatz

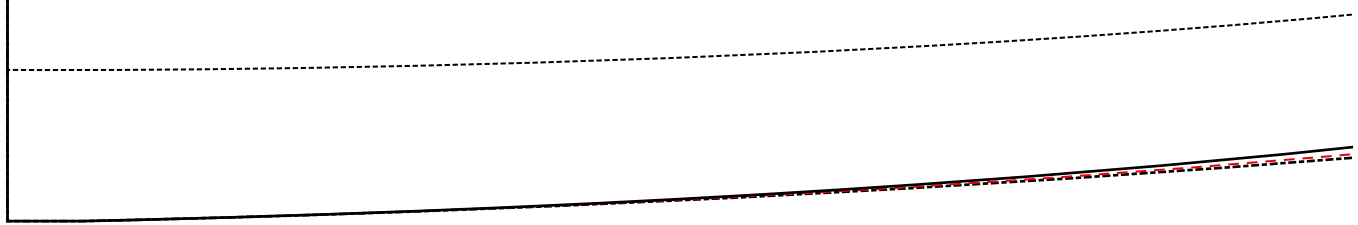


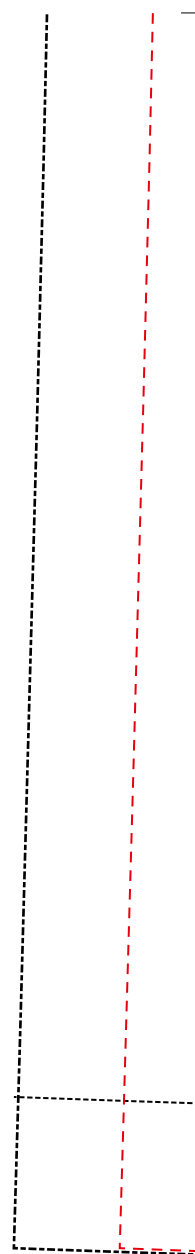
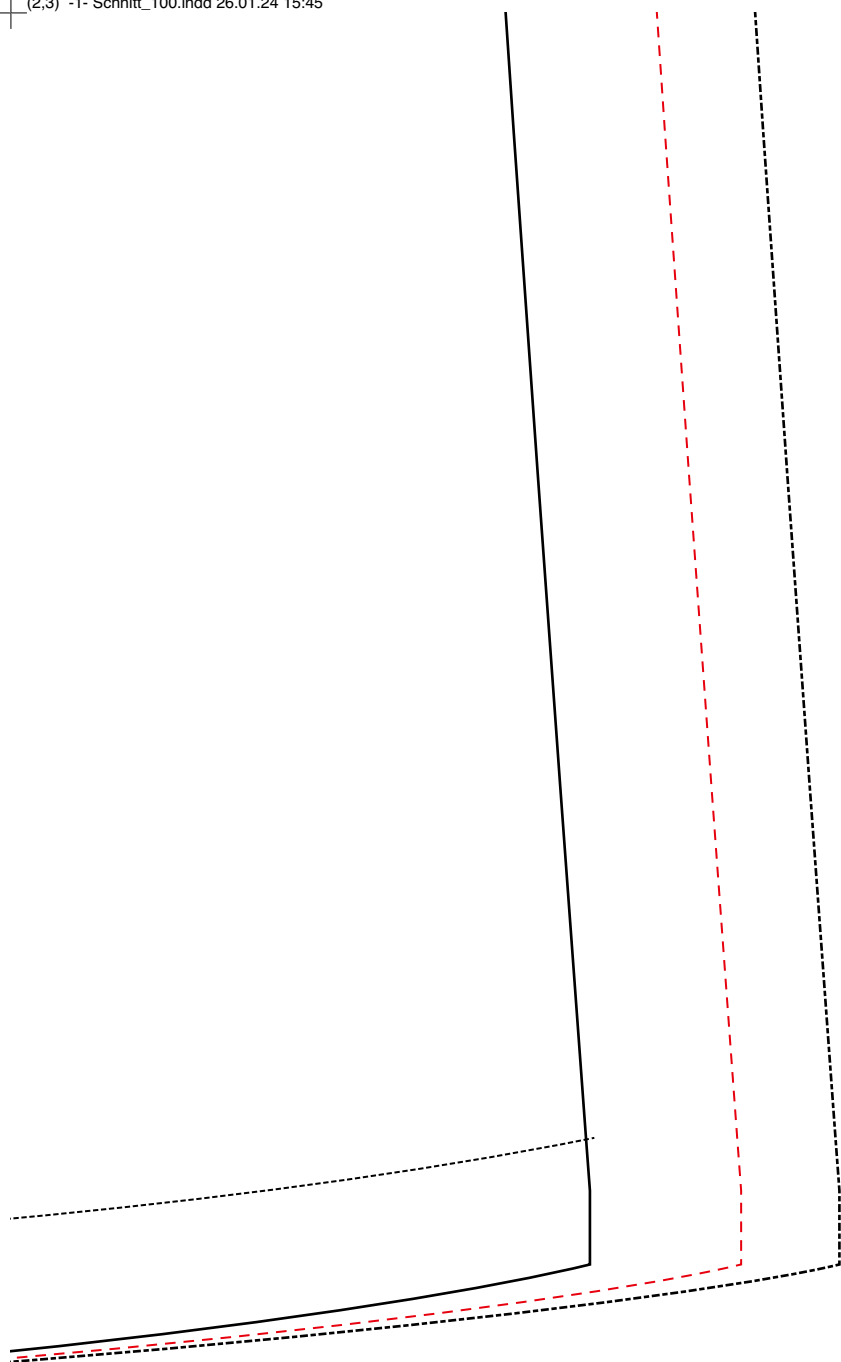
erer Besatz



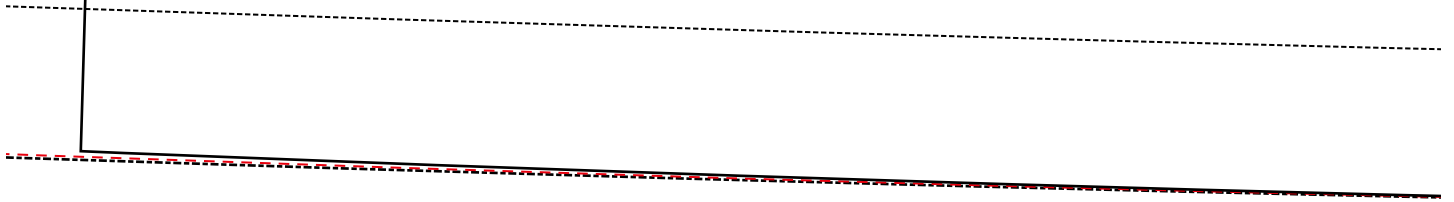


# unteres Rückenteil





un



iteres Vorderteil





