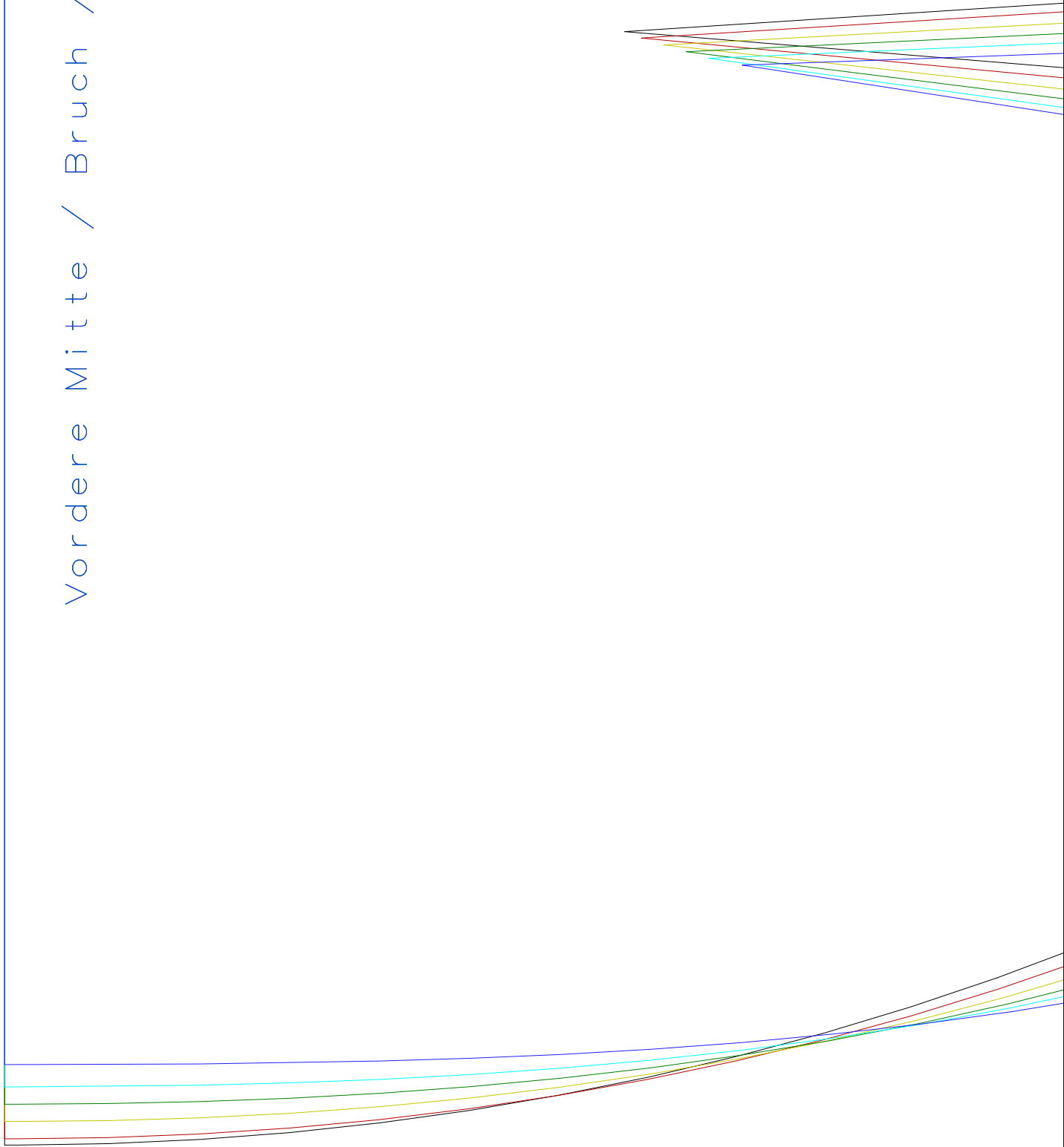
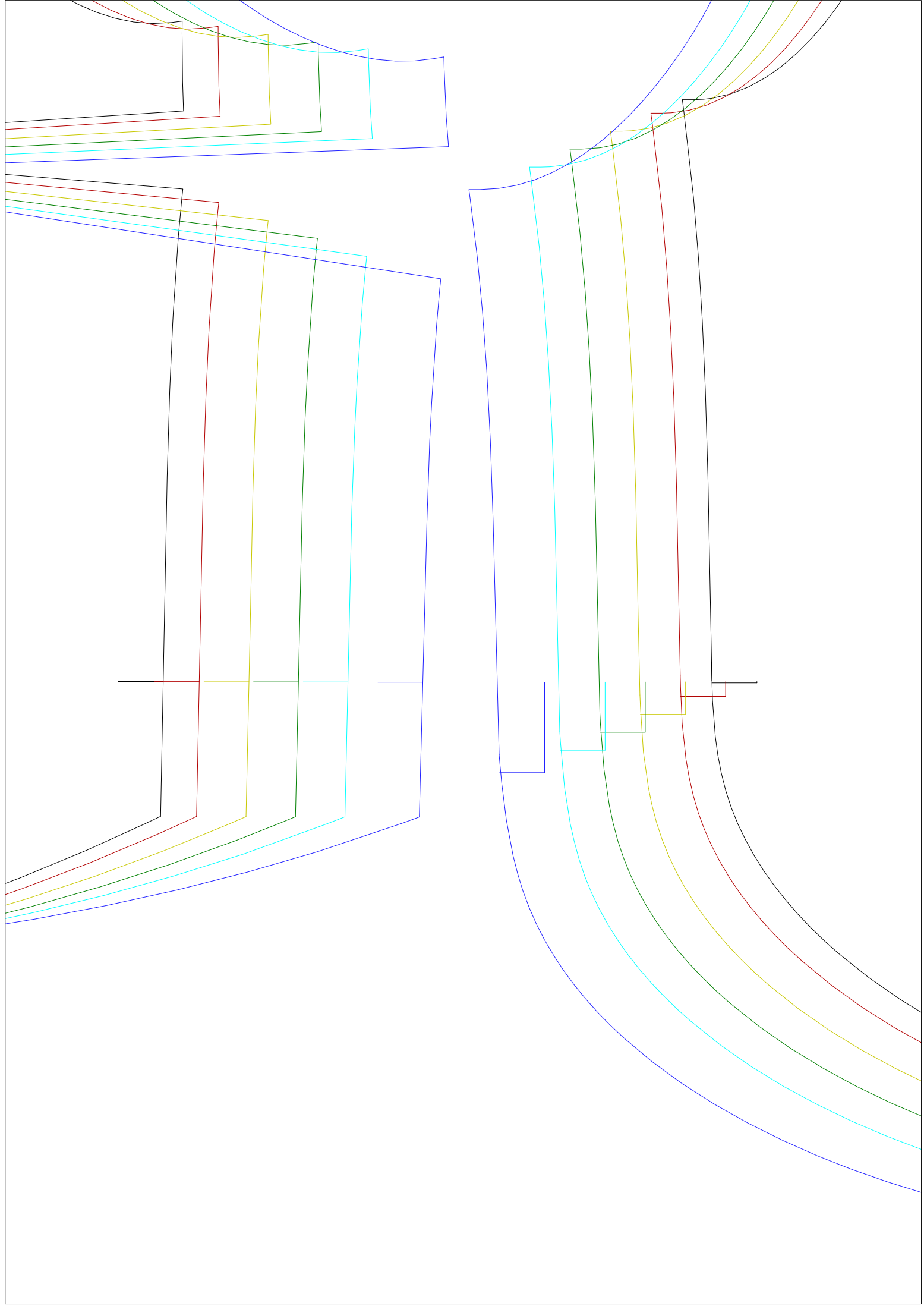




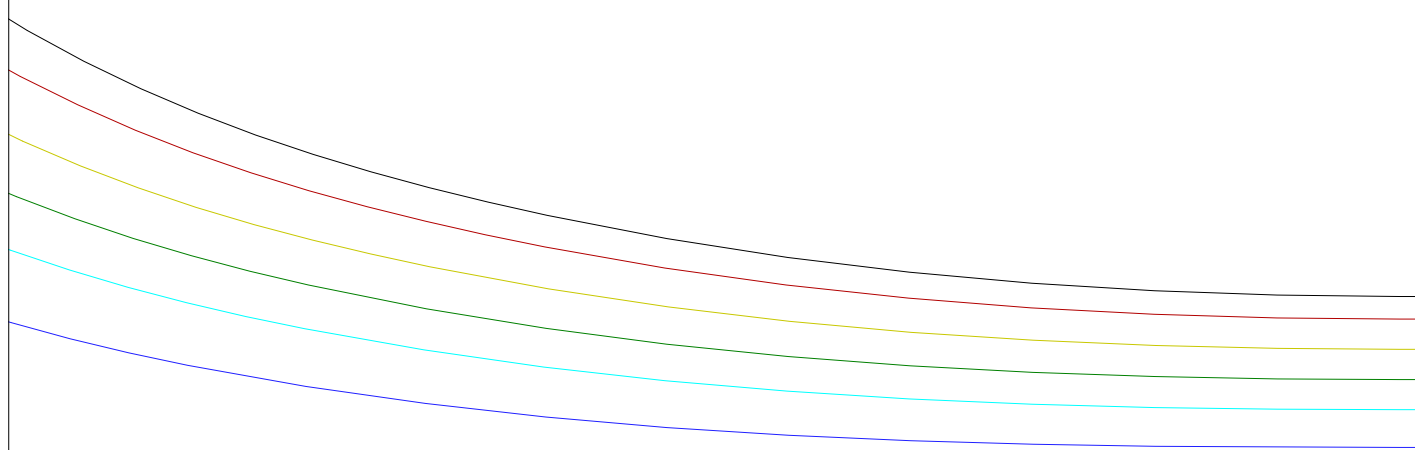
1 cm

Vordere Mitte / Bruch / Fade





Hinterere Mitte/Fadenlauf



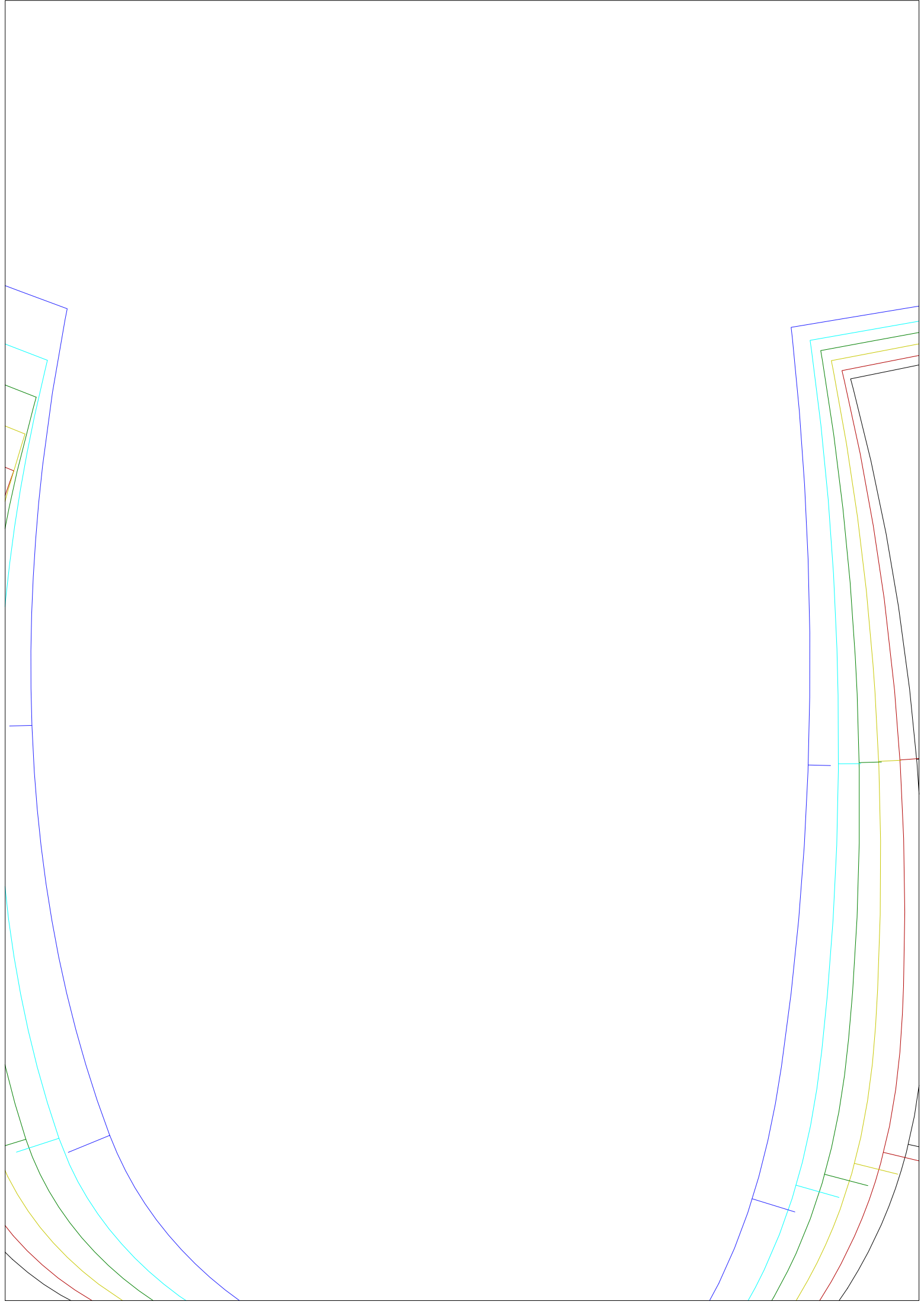


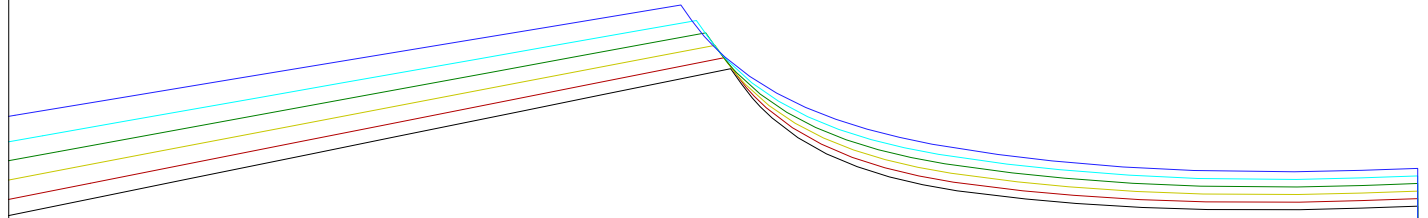
Bluse mit Stickerei

Vorderteil

1 x zuschneiden im Bruch

nlauf

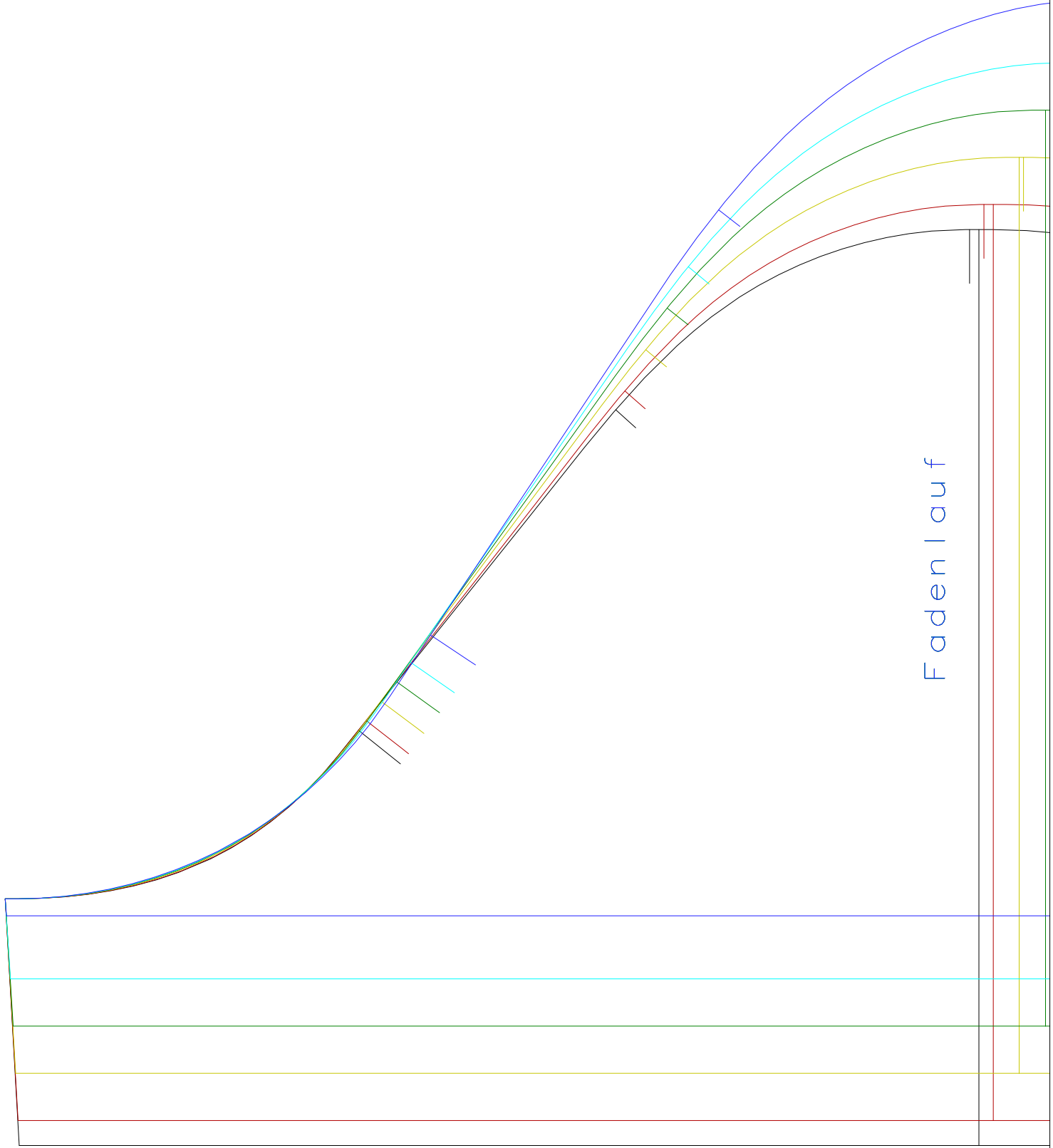


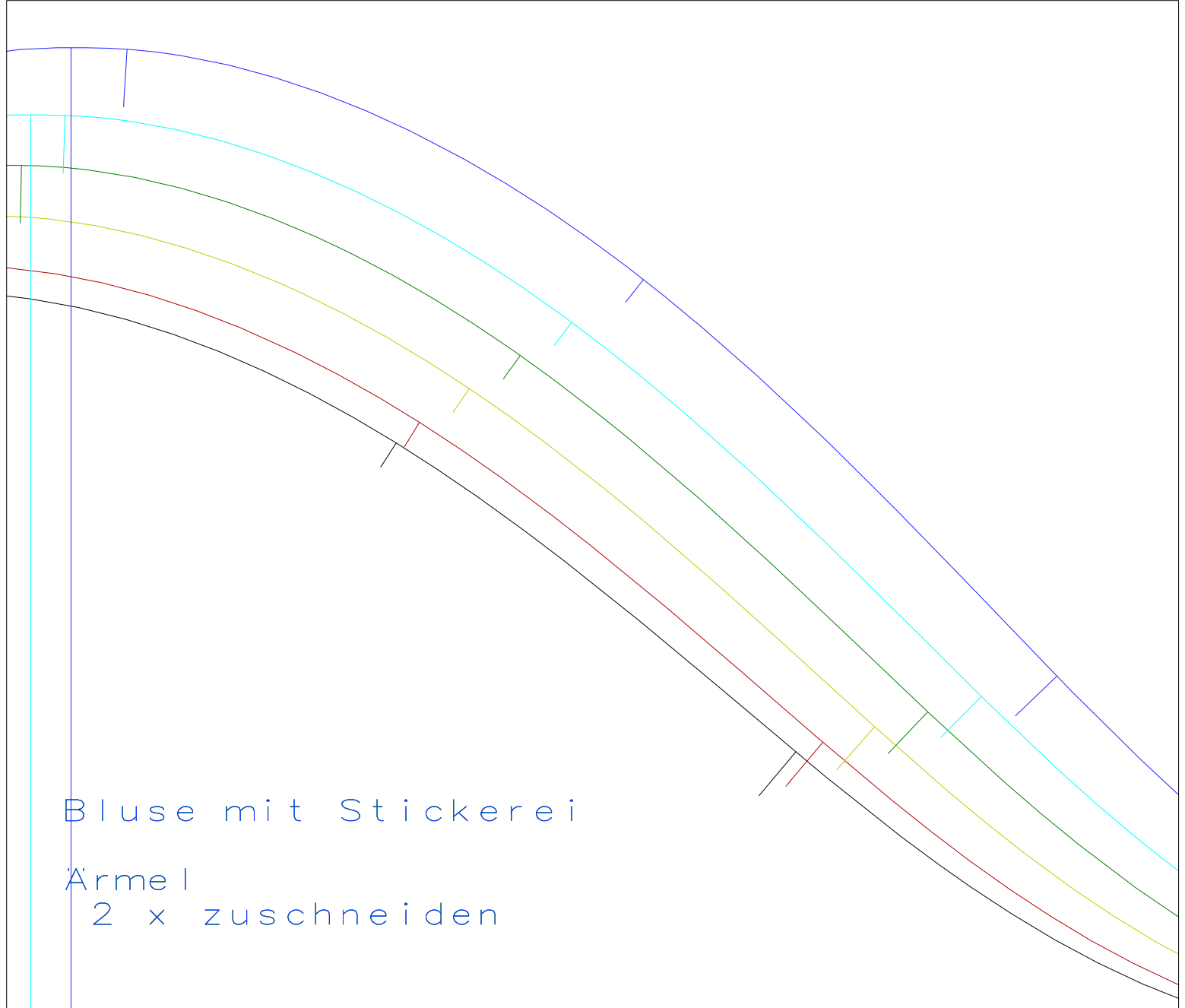


Bluse mit Stickerei

Rückenteil
2 x zuschneiden







Bluse mit Stickerei

Ärmel
2 x zuschneiden

