

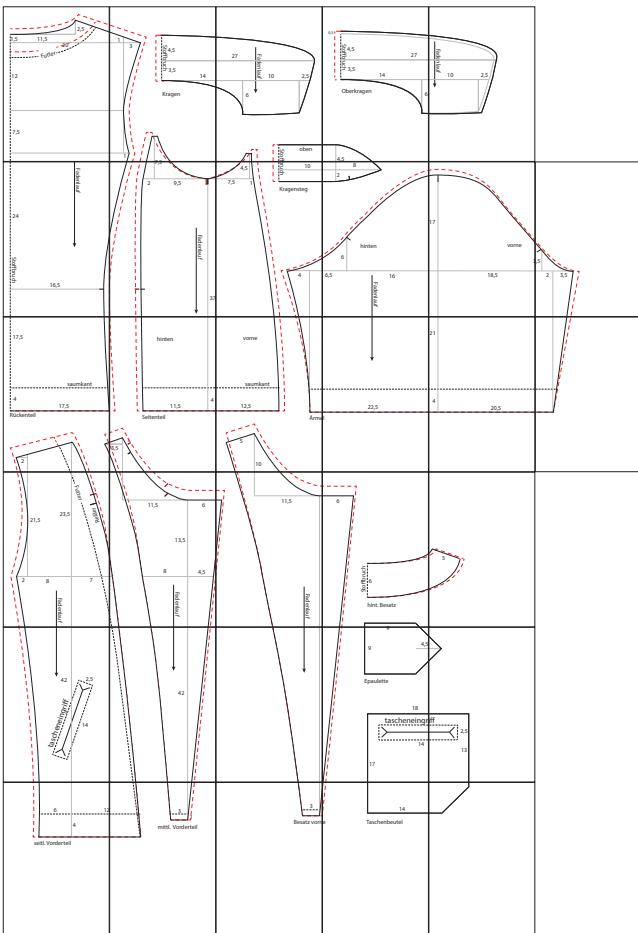
Colourblock Bikerjacke

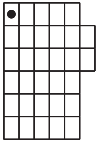
Kollektion N°8

36/38 und 40/42 (gestrichelte rote Linie)

Drucken Sie die Schnittmusterseiten auf DIN A4 Papier aus. Achten Sie dabei darauf, dass das Druckergebnis in den Druckereinstellung nicht skaliert wird. Das Kontrollkästchen sollte genau 1 cm auf allen Seiten betragen.

Schneiden Sie jeweils an einer langen Seite eine Schnittkante ab und kleben die Seiten gemäß untenstehender Übersicht zusammen.





1.1

1cm

2,5

1,5

11,5

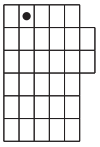
20

Futter

12

7,5

F



1.2

1cm

1

3

Stoffbruch

4,5

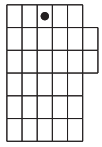
3,5

14

Kragen

1

7,5



1.3

1cm

0,5

27

Fadenlauf

10

2,5

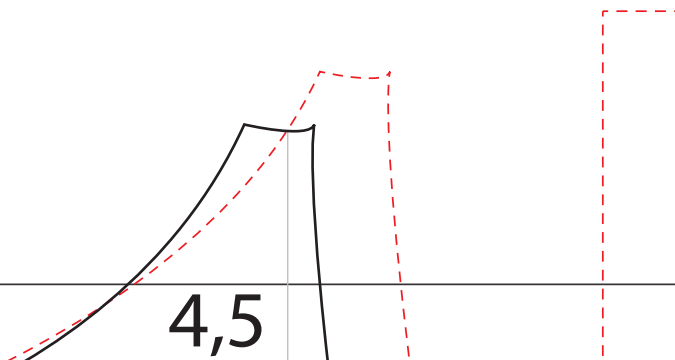
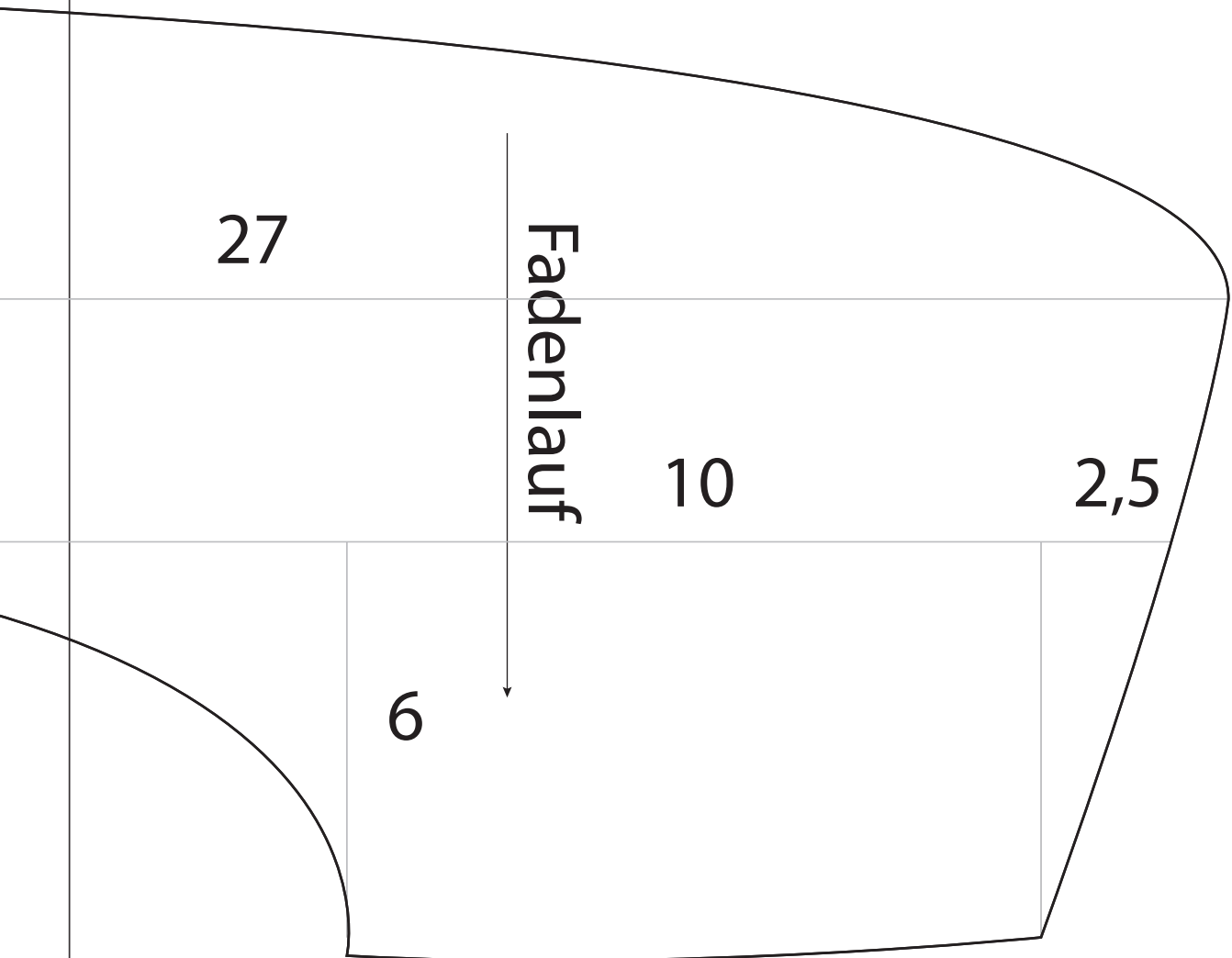
6

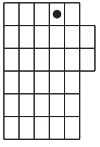
oben

Stoffbruch

10

4,5





1.4

1cm

0,5

Stoffbruch

4,5

3,5

27

14

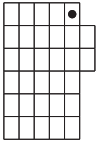
Oberkragen

6

Fadenlauf

4,5

8



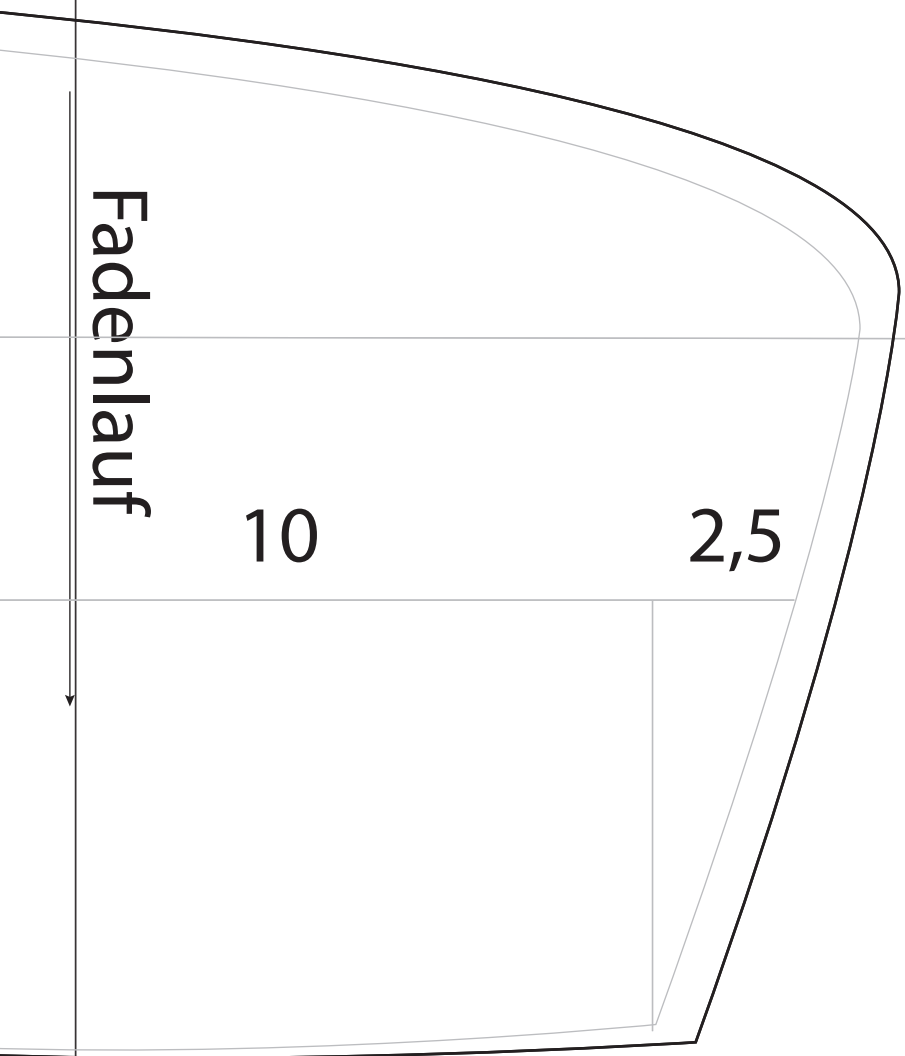
1.5

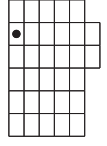
1cm

Fadenlauf

10

2,5





2.1

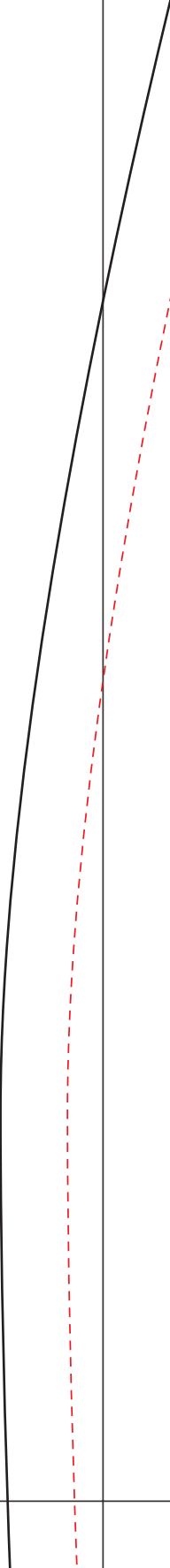
24

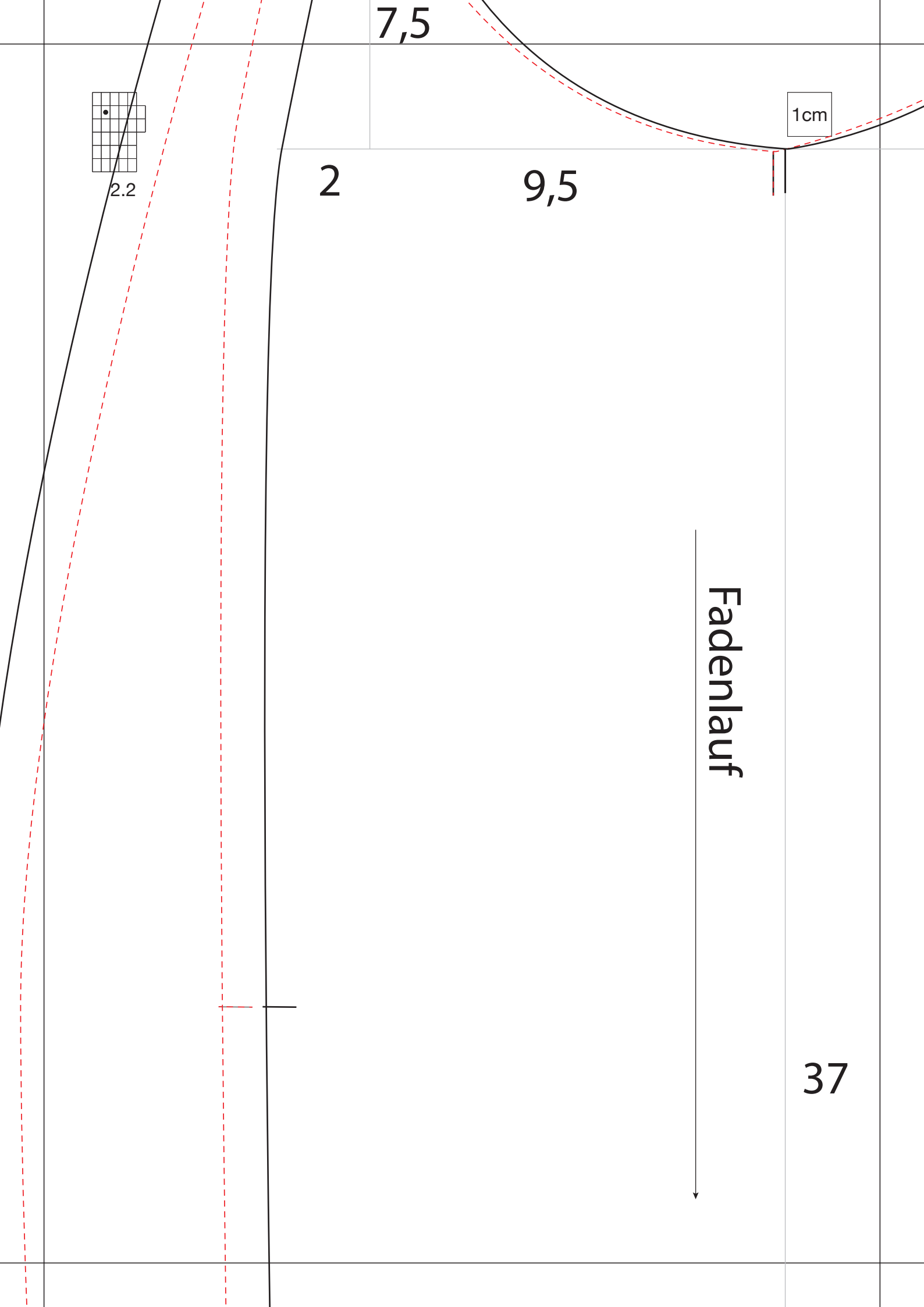
Stoffbruch

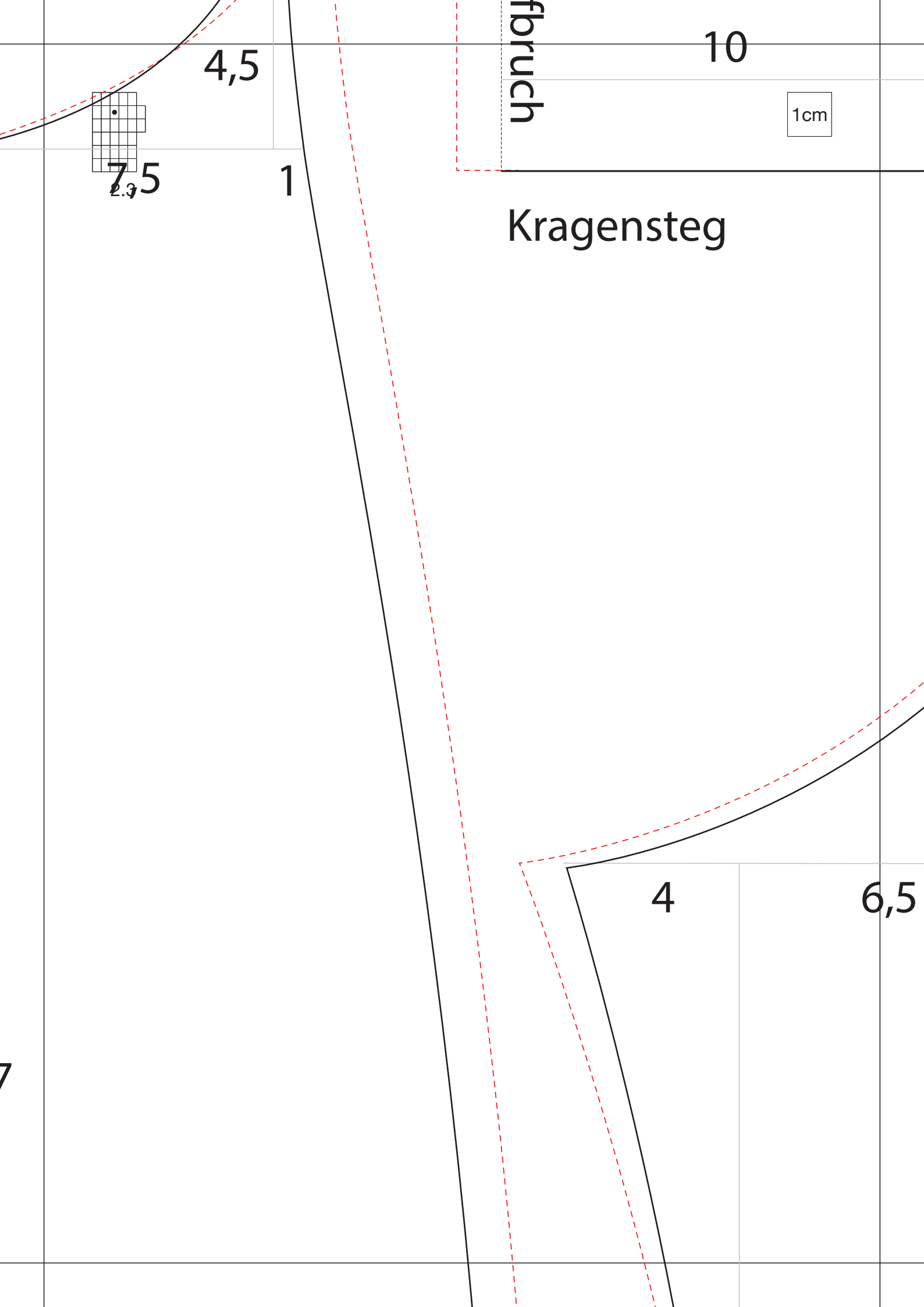
16,5

Fadenlauf

1cm







4,5

10

fbruch

1cm

7,5

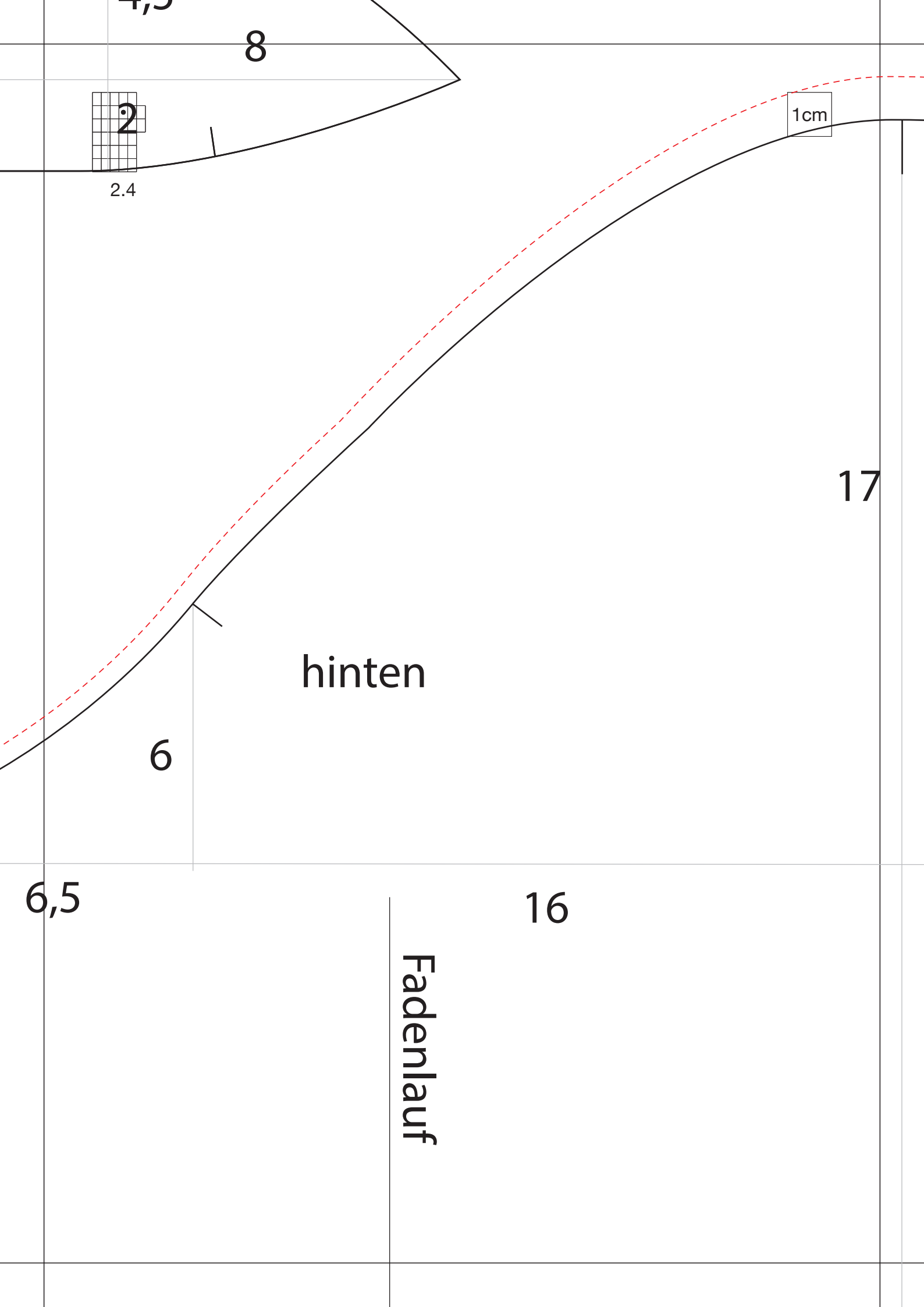
1

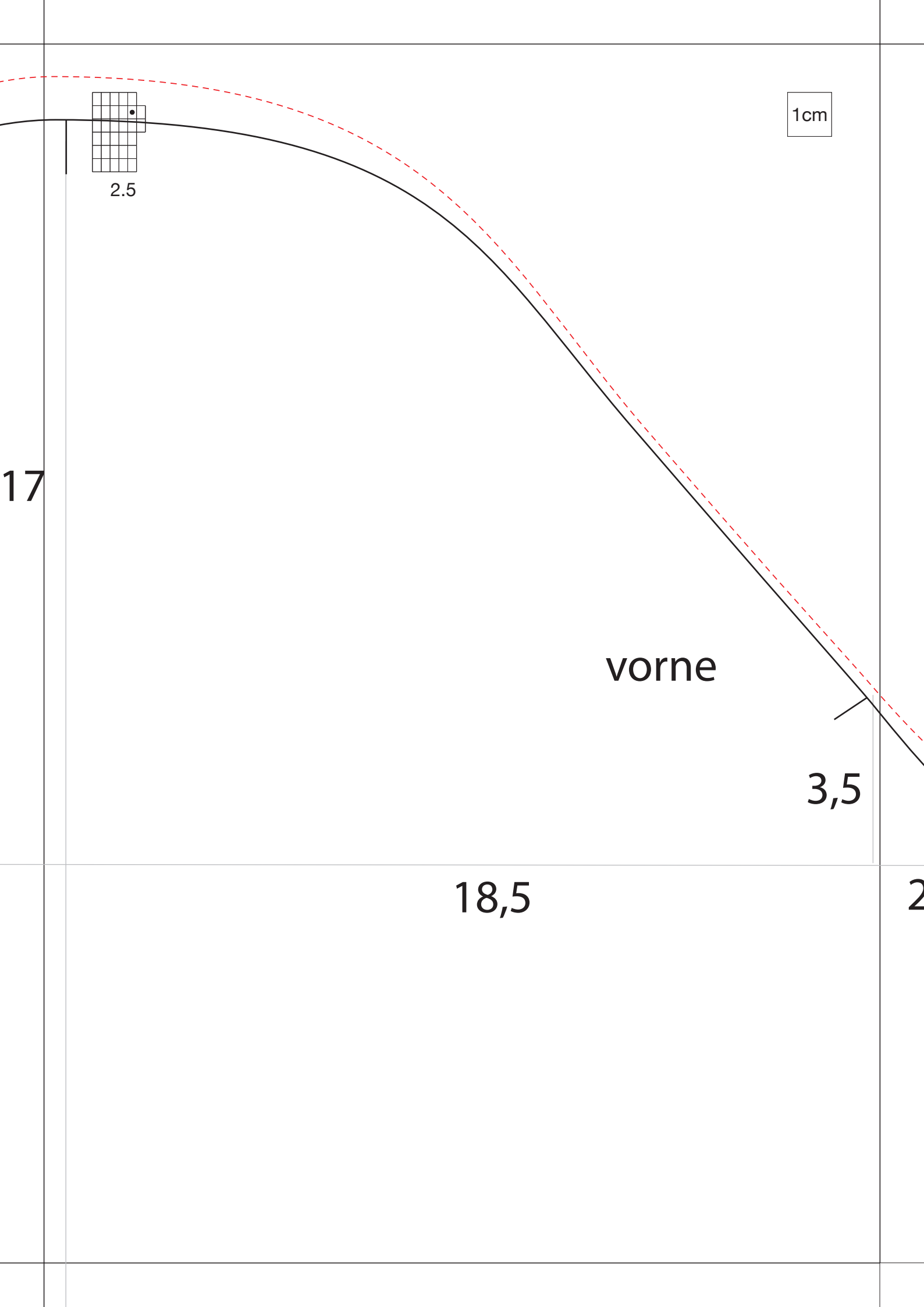
Kragensteg

4

6,5

7





1cm

2.5

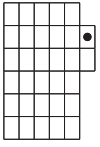
17

vorne

3,5

18,5

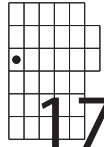
2



2.6

1cm





17,5
3.1

1cm

saumkant

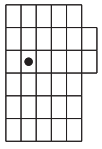
4

17,5

Rückenteil

2

3,5



3.2

1cm

hinten

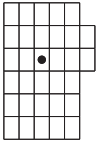
4

11,5

Seitenteil

3,5

1



3.3

vorne

1cm

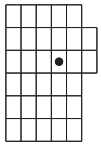
saumkant

12,5

Ärmel

5

10



3.4

1cm

21

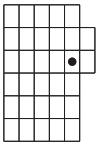


4

22,5

el

21

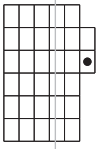


3.5

1cm

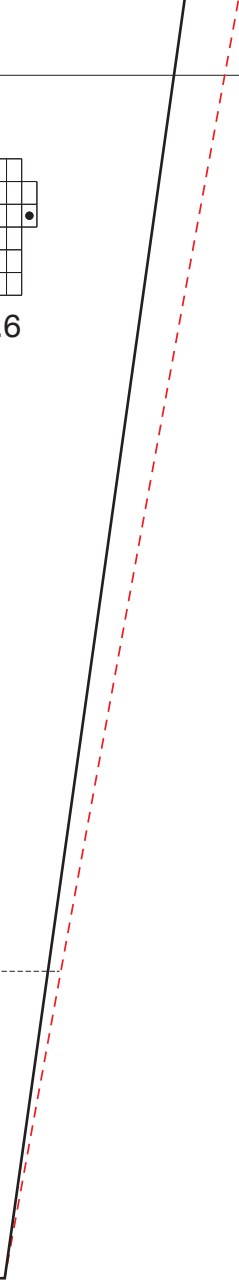
4

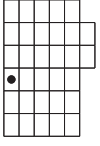
20,5



3.6

1cm





4.1

21,5

23,5

2

8

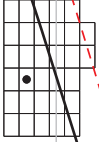
7

Fadenlauf

Futter

Reißer

1cm



4.2

1cm

11,5

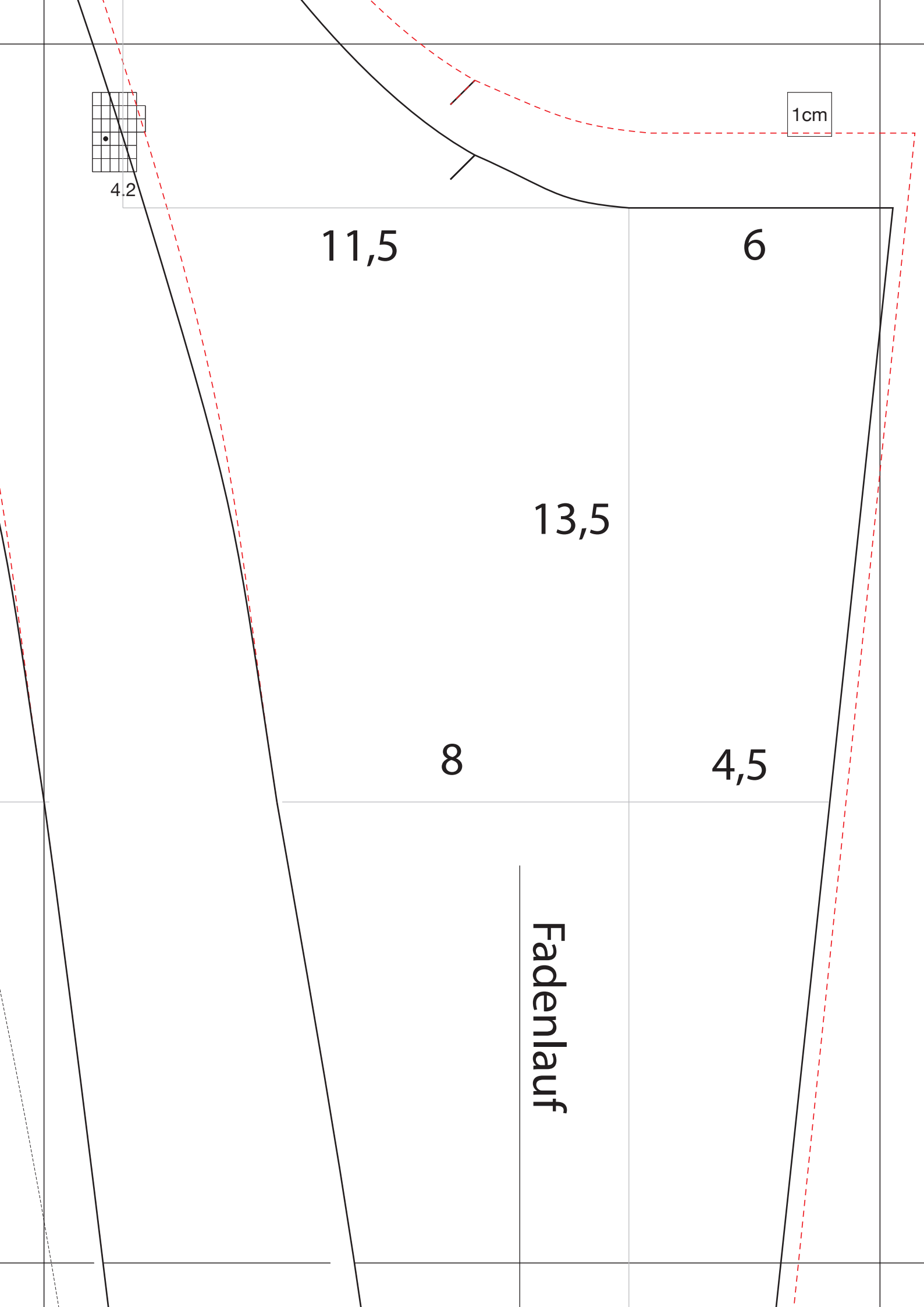
6

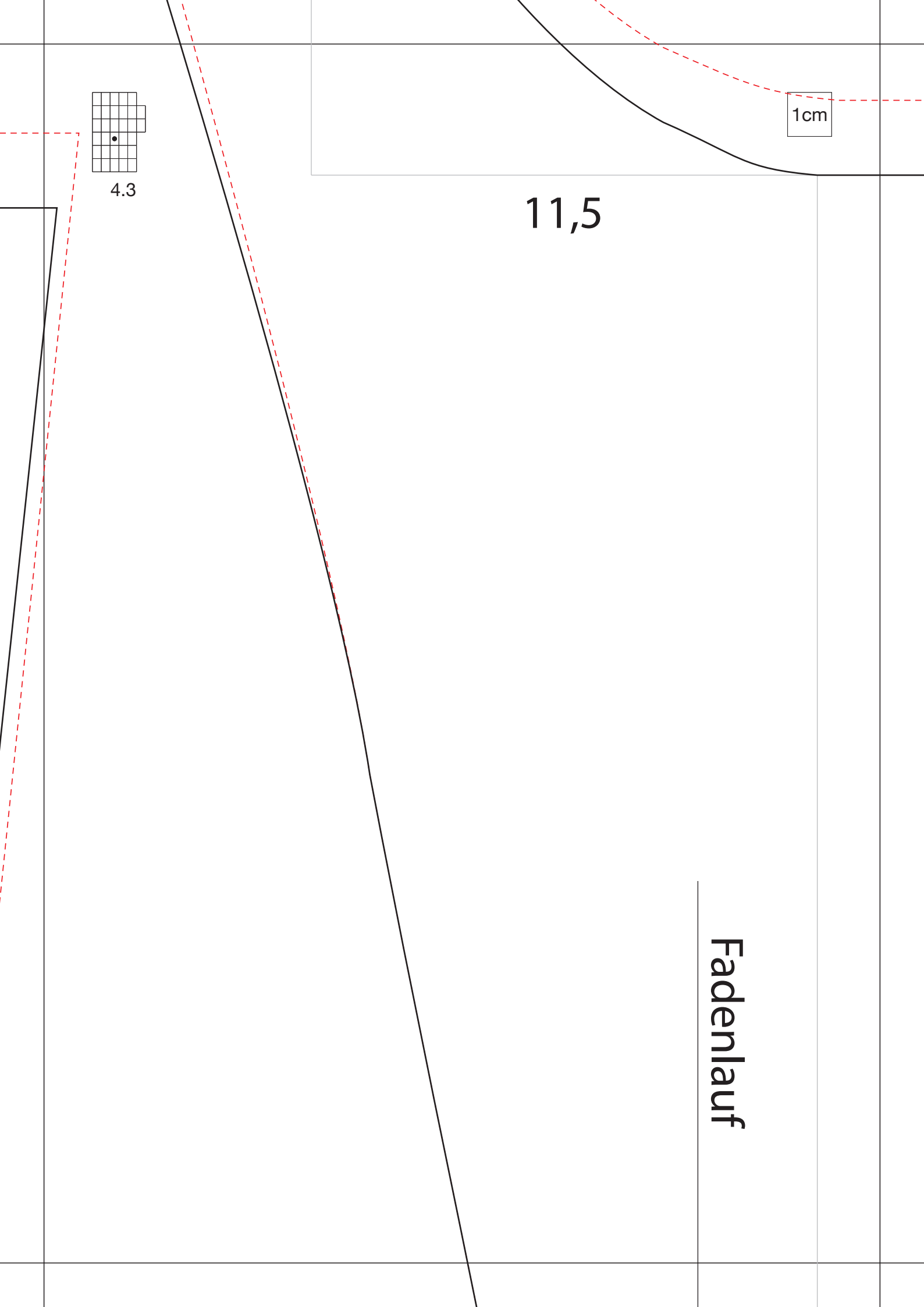
13,5

8

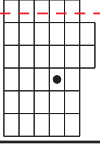
4,5

Fadenlauf





1cm



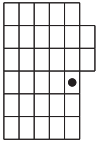
4.4
6

Stoffbruch

6

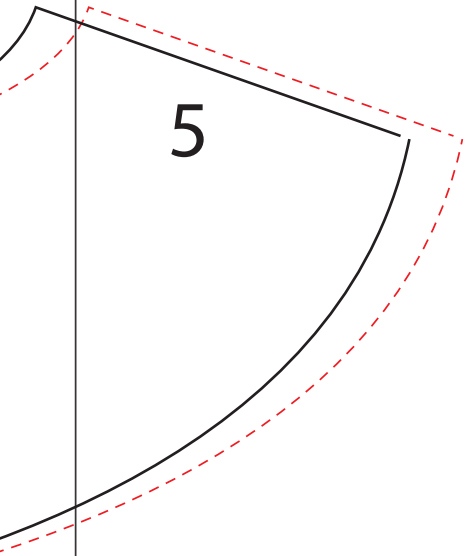
hint. Besatz

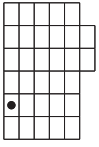
9



4.5

1cm





5.1

1cm

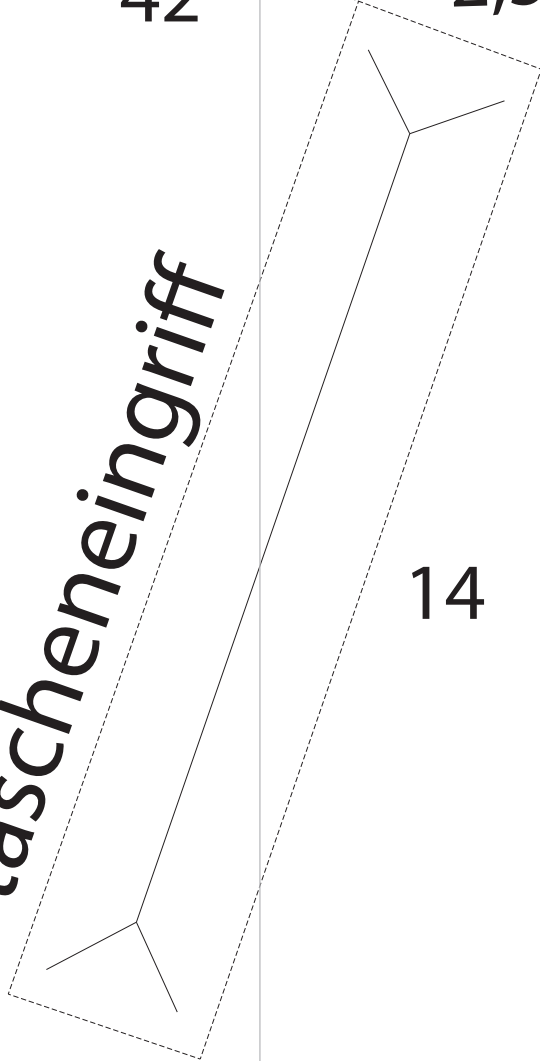


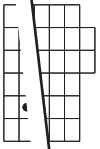
42

2,5

tascheneingriff

14





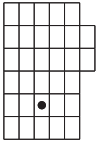
2



42

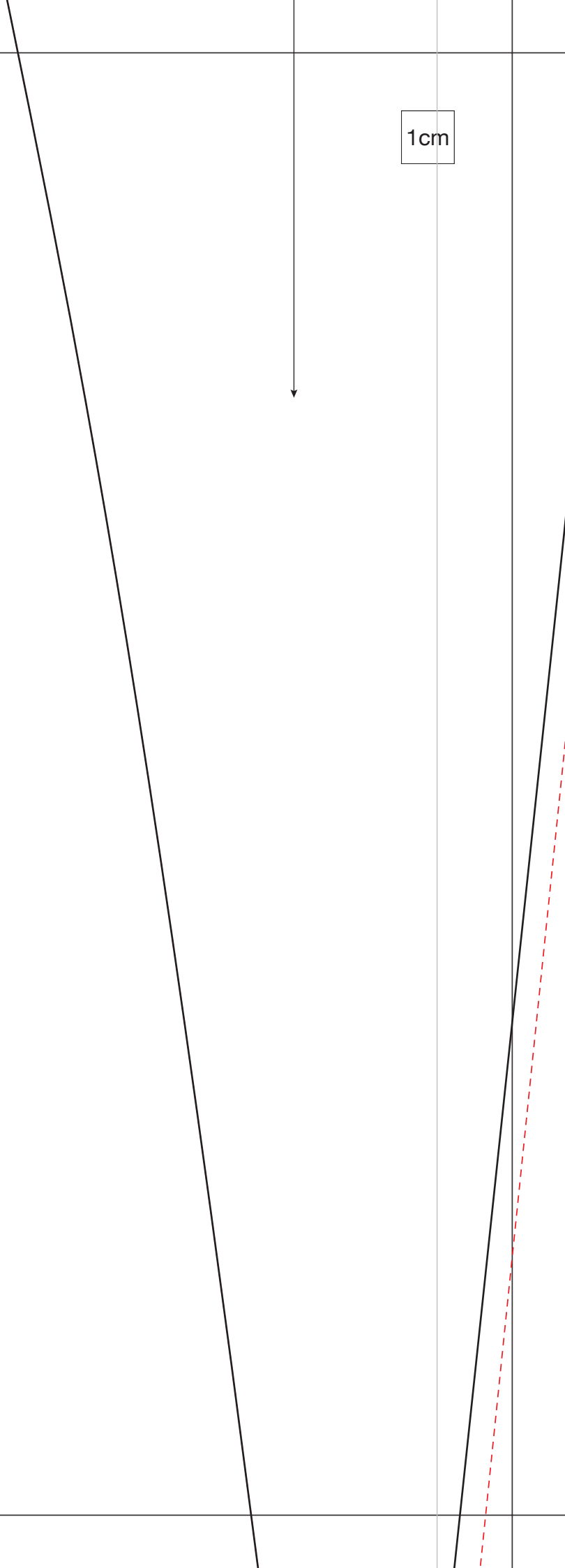
1cm

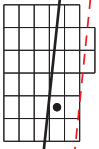




5.3

1cm





5.4

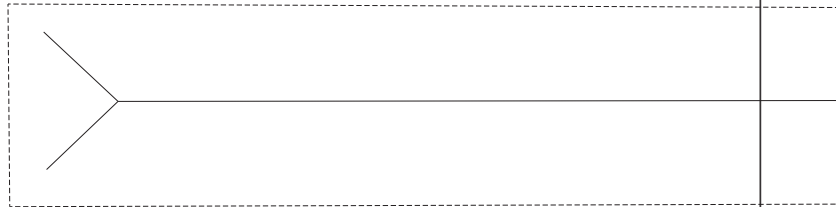
9

4,5

Epaulette

18

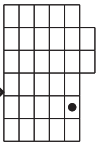
tascheneingriff



14

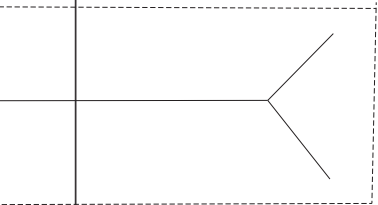
17

1cm



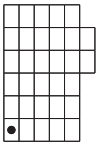
5.5

iff



2,5

13



6.1

1cm

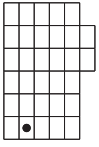
6

12

4

seitl. Vorderteil

2



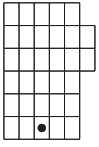
6.2

1cm

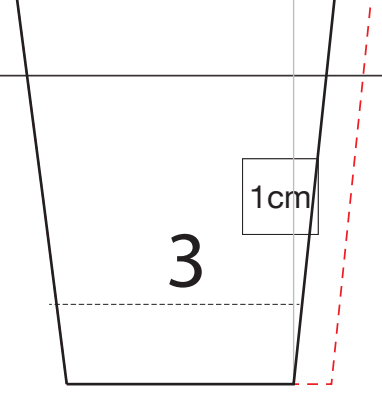
3

1

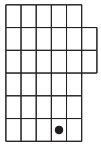
mittl. Vorderteil



6.3



Besatz vorne



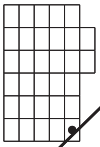
6.4

1cm

14

ne

Taschenbeutel



6.5

1cm