

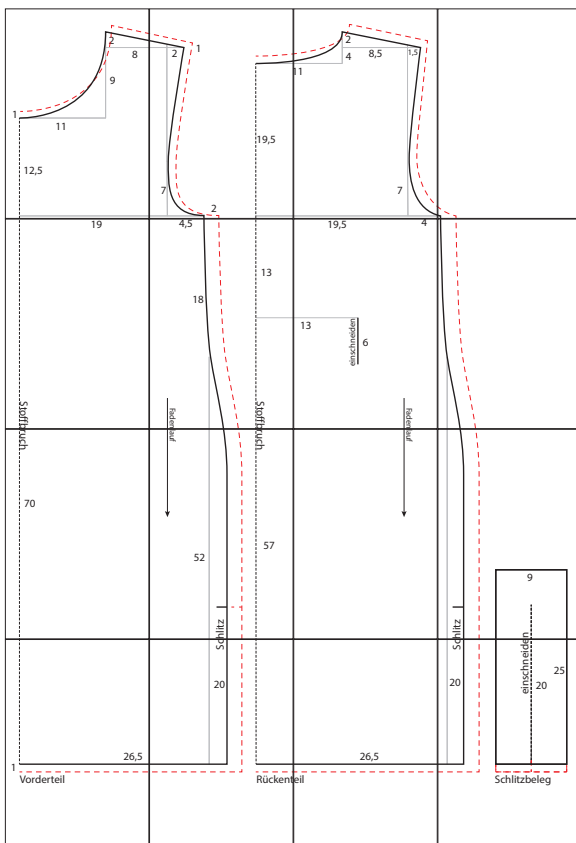
Dip Dye Pullkleid

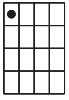
Kollektion N°8

36/38 und 40/42 (gestrichelte rote Linie)

Drucken Sie die Schnittmusterseiten auf DIN A4 Papier aus. Achten Sie dabei darauf, dass das Druckergebnis in den Druckereinstellung nicht skaliert wird. Das Kontrollkästchen sollte genau 1 cm auf allen Seiten betragen.

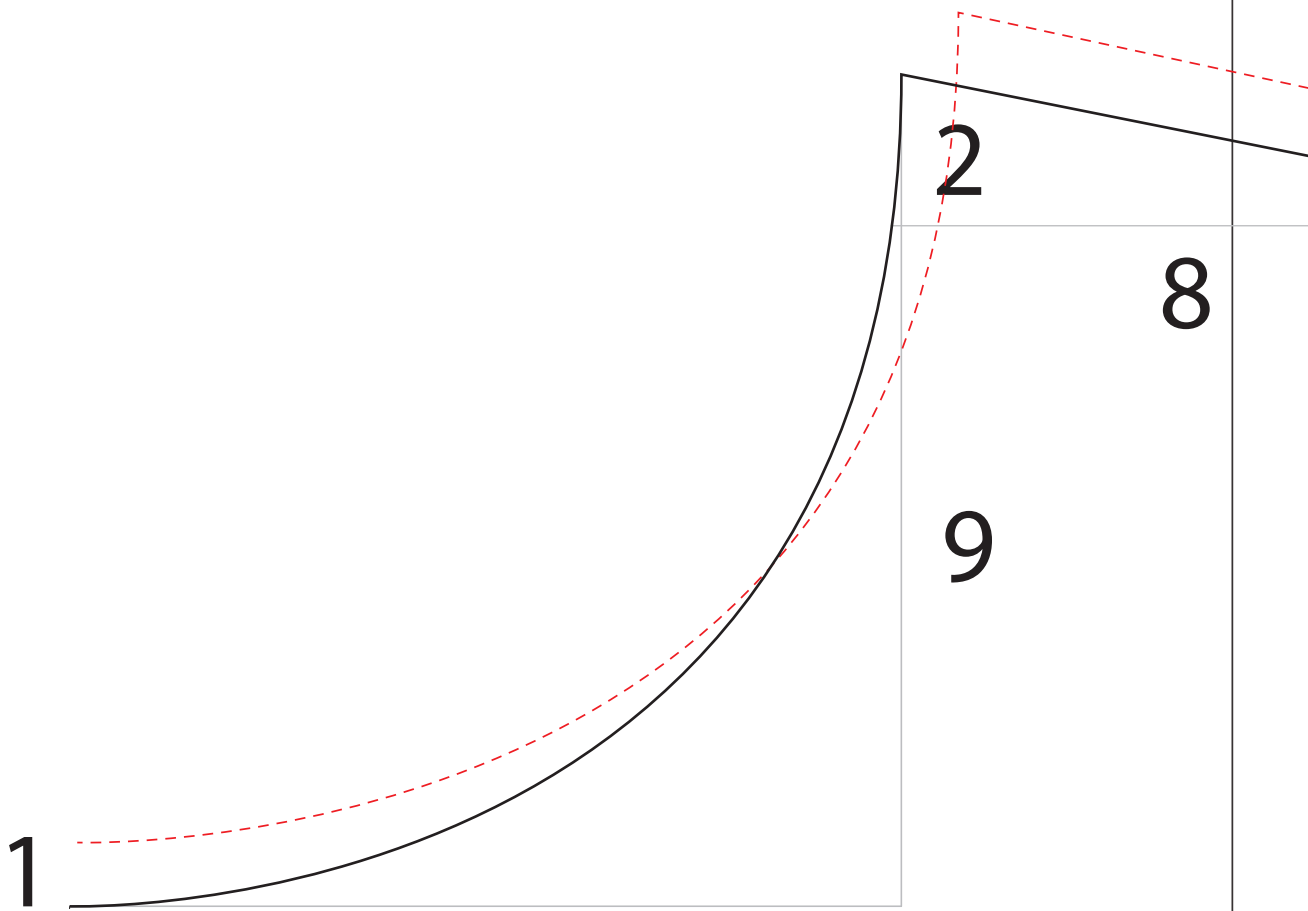
Schneiden Sie jeweils an einer langen Seite eine Schnittkante ab und kleben die Seiten gemäß untenstehender Übersicht zusammen.





1.1

1cm



1

11

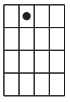
2

8

9

12,5

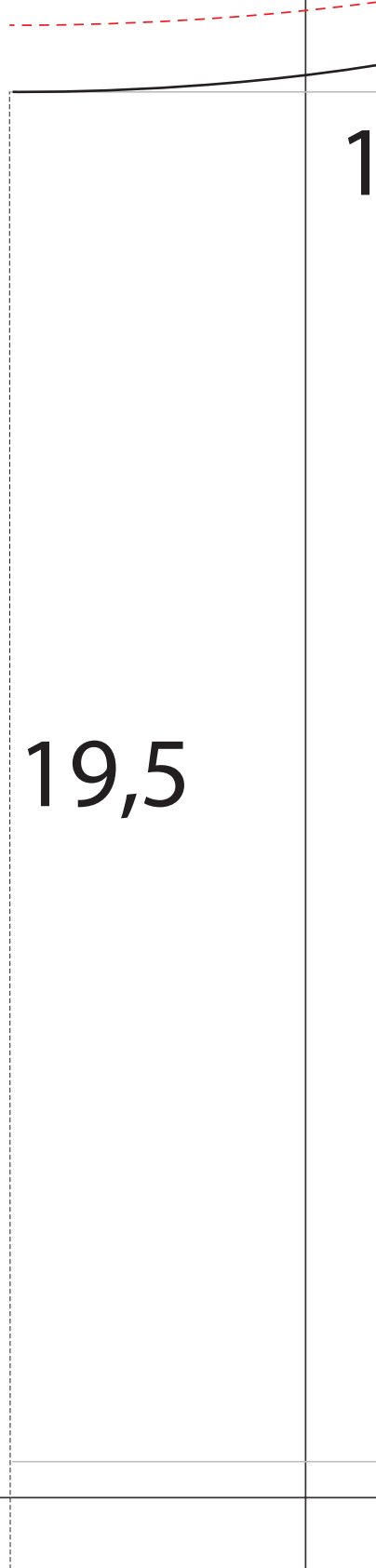
19

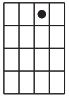


1.2



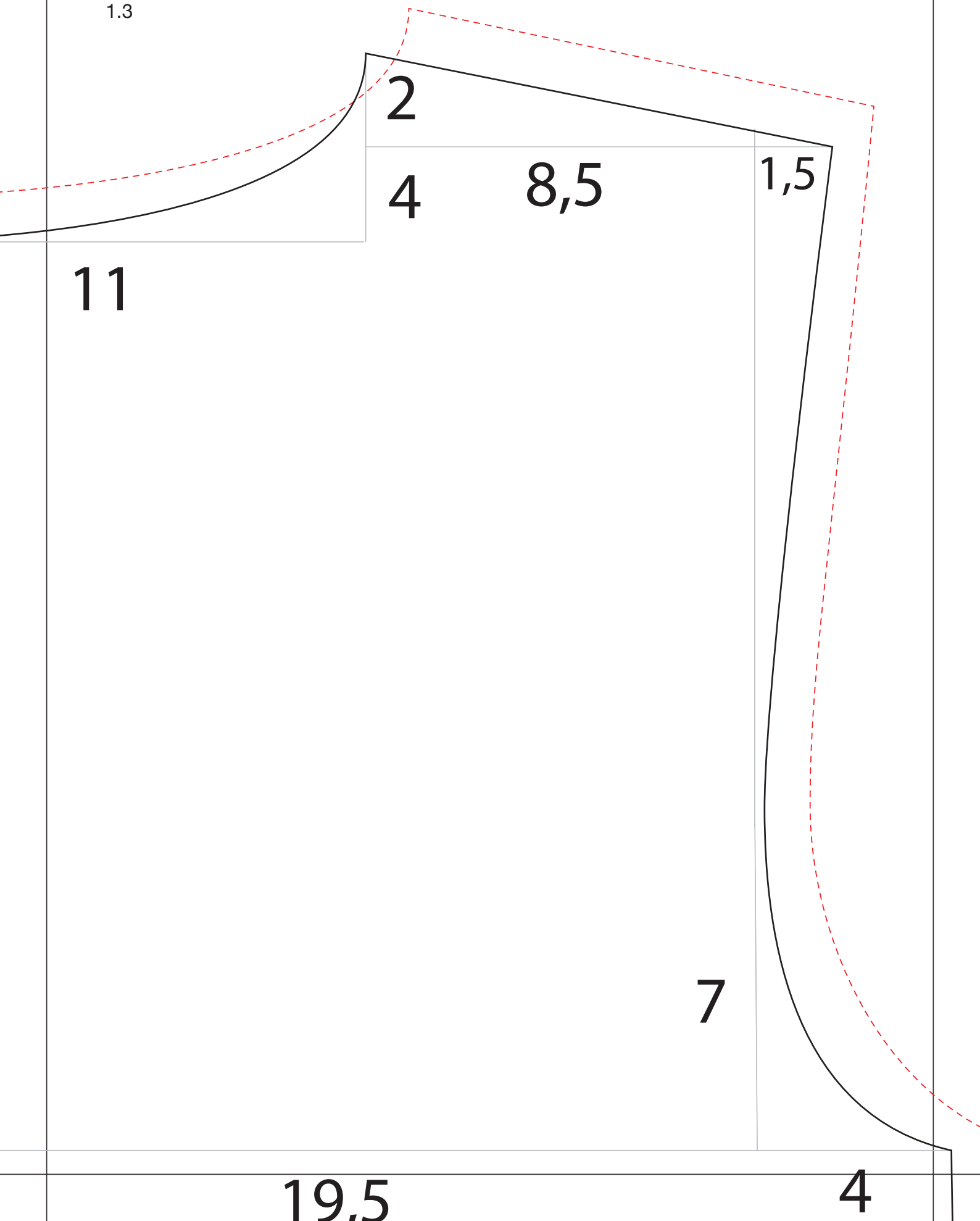
1cm

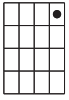




1.3

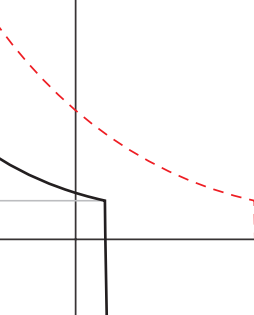
1cm

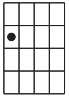




1.4

1cm





2.1

Stoffbruc



2.2

4,5

18

Fadenlauf

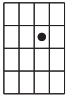
1cm

13

Stoffbruc

19,5

4



2.3

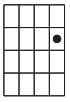
1cm

13

einschneiden

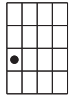
6

Fadenlauf



2.4

1cm

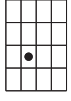


3.1

ruch

1cm

70



3.2

lauf



52

Schlitz

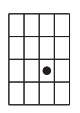
ruch

1cm

57

lauf

1cm



3.3



Schlitz

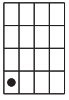


3.4

1cm

neiden

9



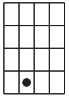
4.1

1cm

26,5

1

Vorderteil



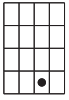
4.2

20

1cm

5,5

Rückente

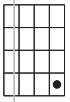


4.3

1cm

26,5

enteil



4.4

20

einschneid

20

25

1cm

Schlitzbeleg