

Hose Beril

Kollektion N°14

Größe 36-38 /40-42 /44

Drucken Sie die Schnittmusterseiten auf DIN A4 Papier aus. Achten Sie dabei darauf, dass das Druckergebnis in den Druckereinstellung nicht skaliert wird. Das Kontrollkästchen sollte genau 1 cm auf allen Seiten betragen.

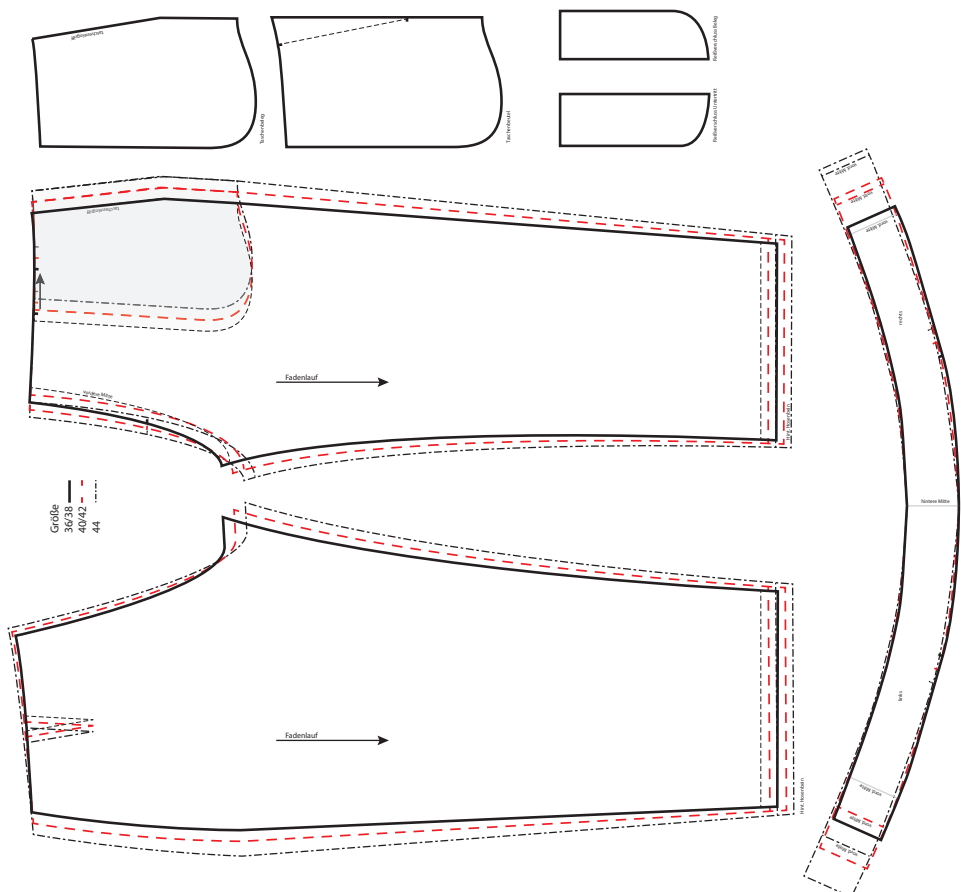
Initiative^{e.V.}
Handarbeit



Mit PATTARINA musst du Schnittmuster nicht mehr ausdrucken und kleben, sondern kannst sie direkt mit dem Handy auf den Stoff übertragen.

In 3 Schritten zum Schnittmuster:

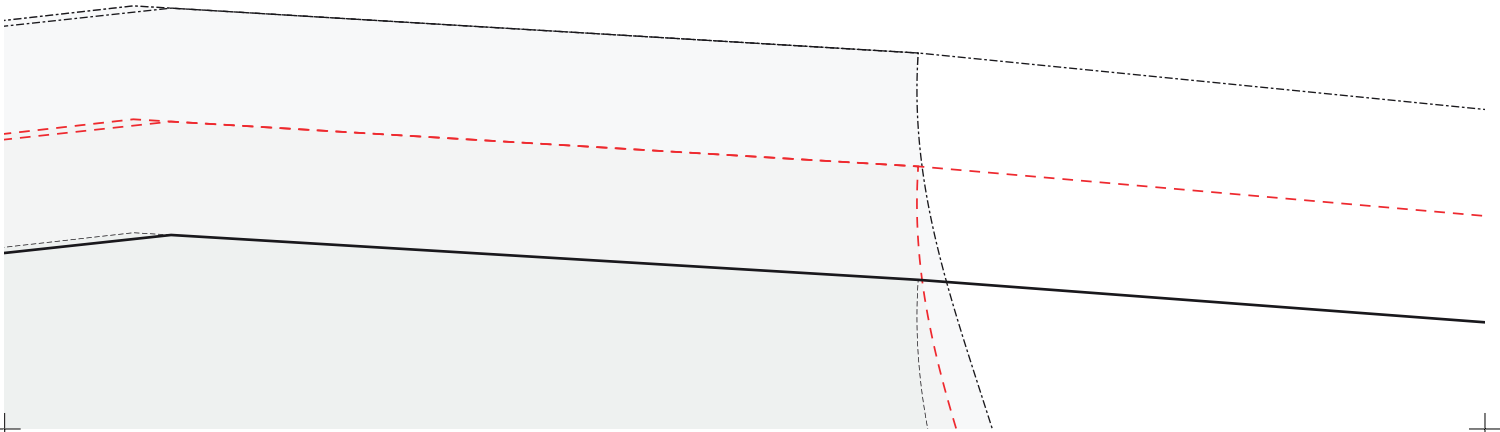
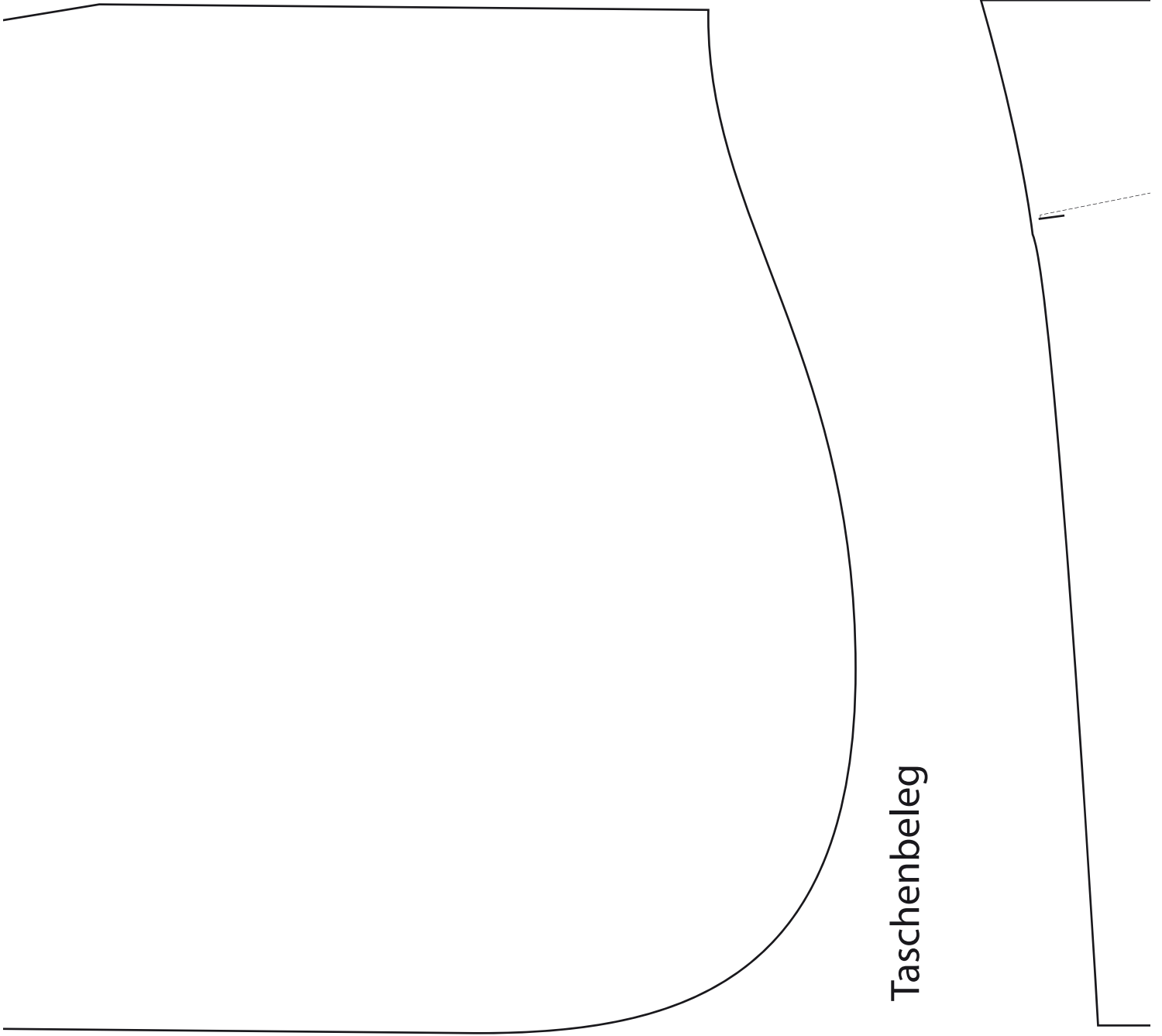
1. Lade dir die PATTARINA-App im Play Store oder App Store herunter.
2. Drucke den Anker auf www.pattarina.de aus.
3. Scanne den QR-Code mit der App, oder mache jetzt einen Screenshot des Codes und lade ihn in deine PATTARINA-App. Schnapp dir einen Trickmarker und leg los. Viel Spaß!

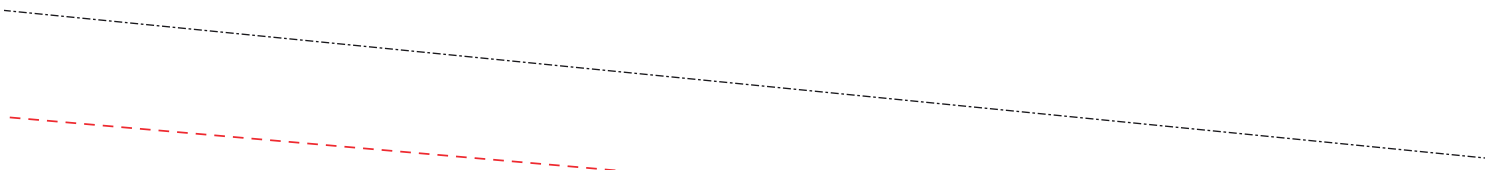
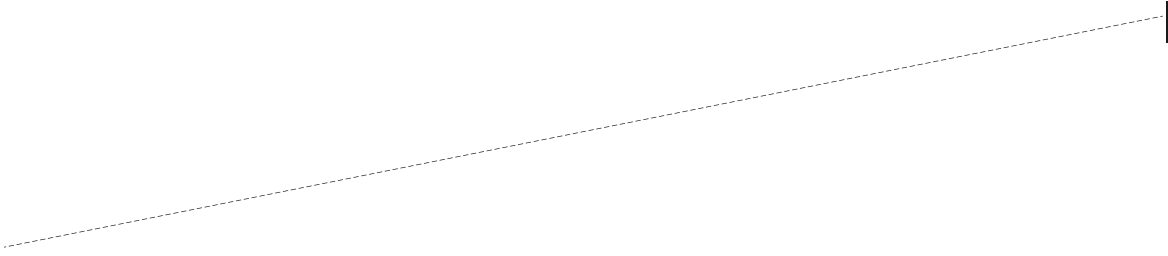


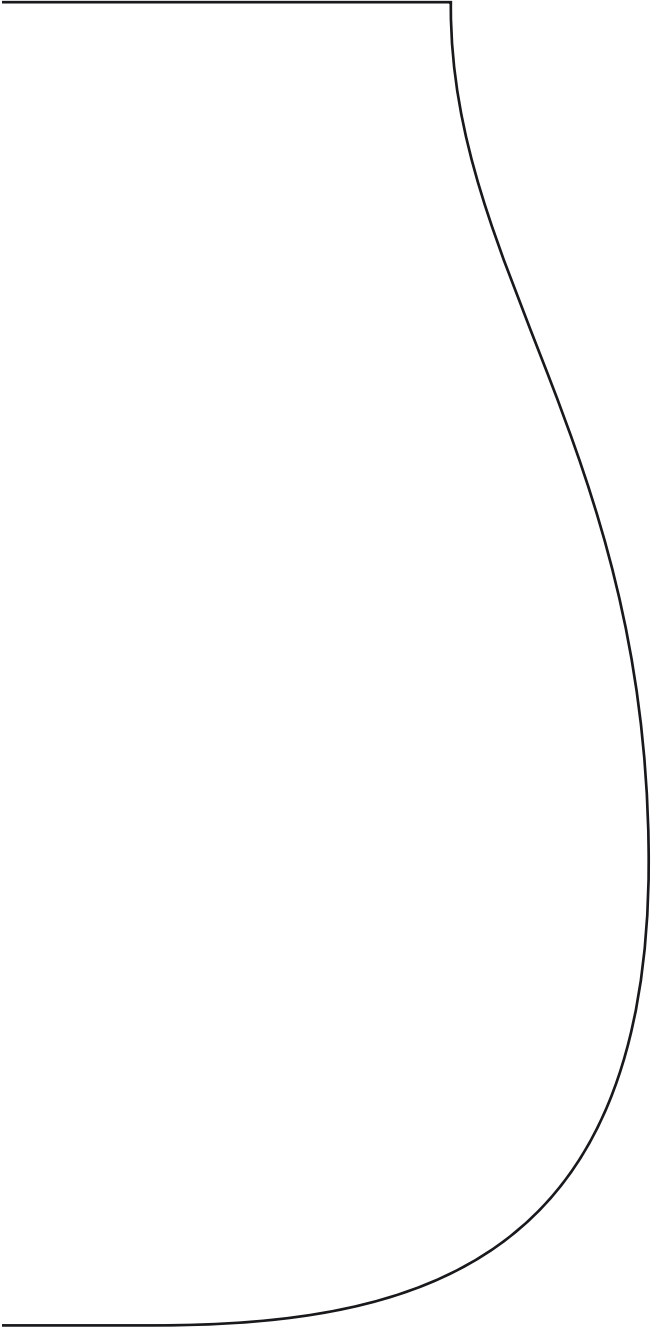
1cm

tascheneingriff

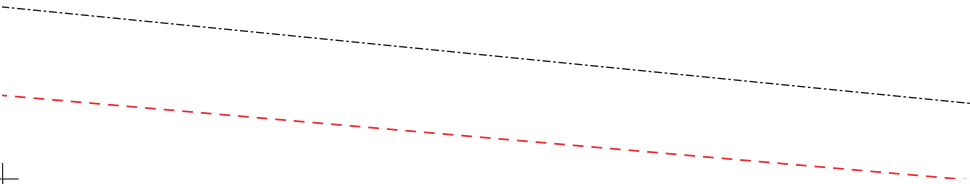
tascheneingriff

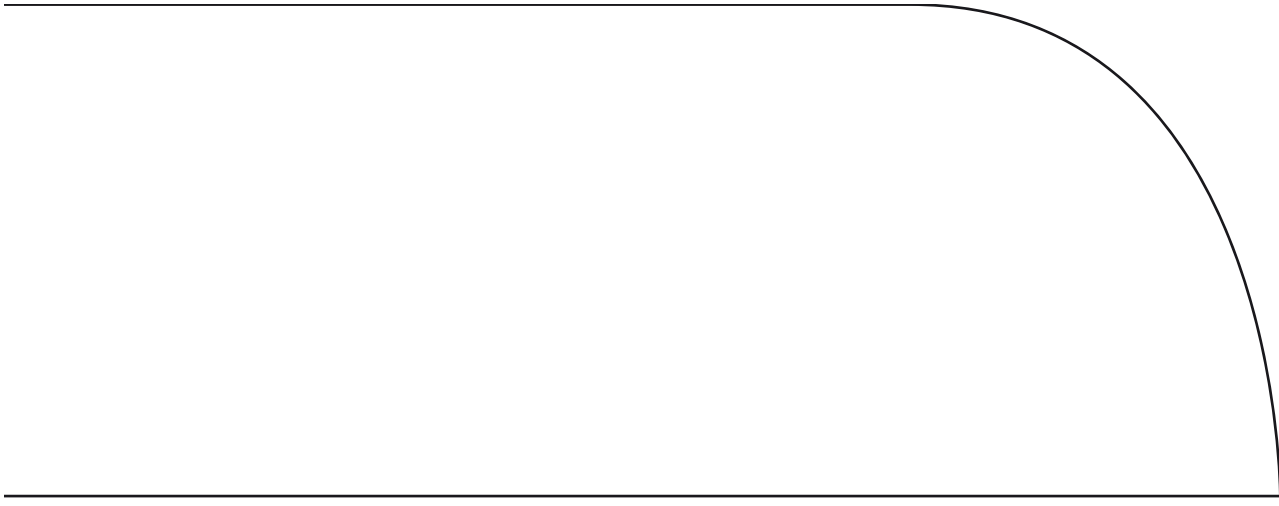






Taschenbeutel

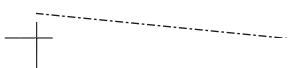


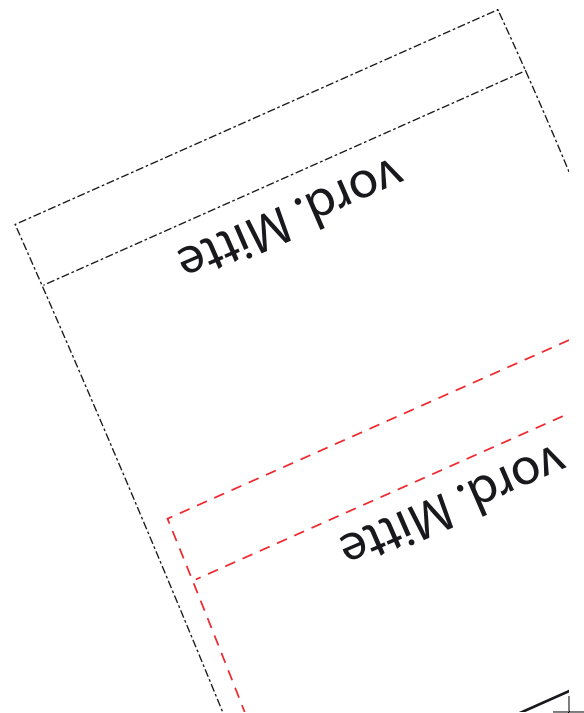


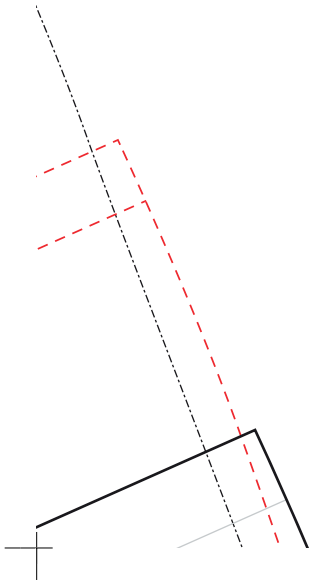
Reißverschluss Beleg

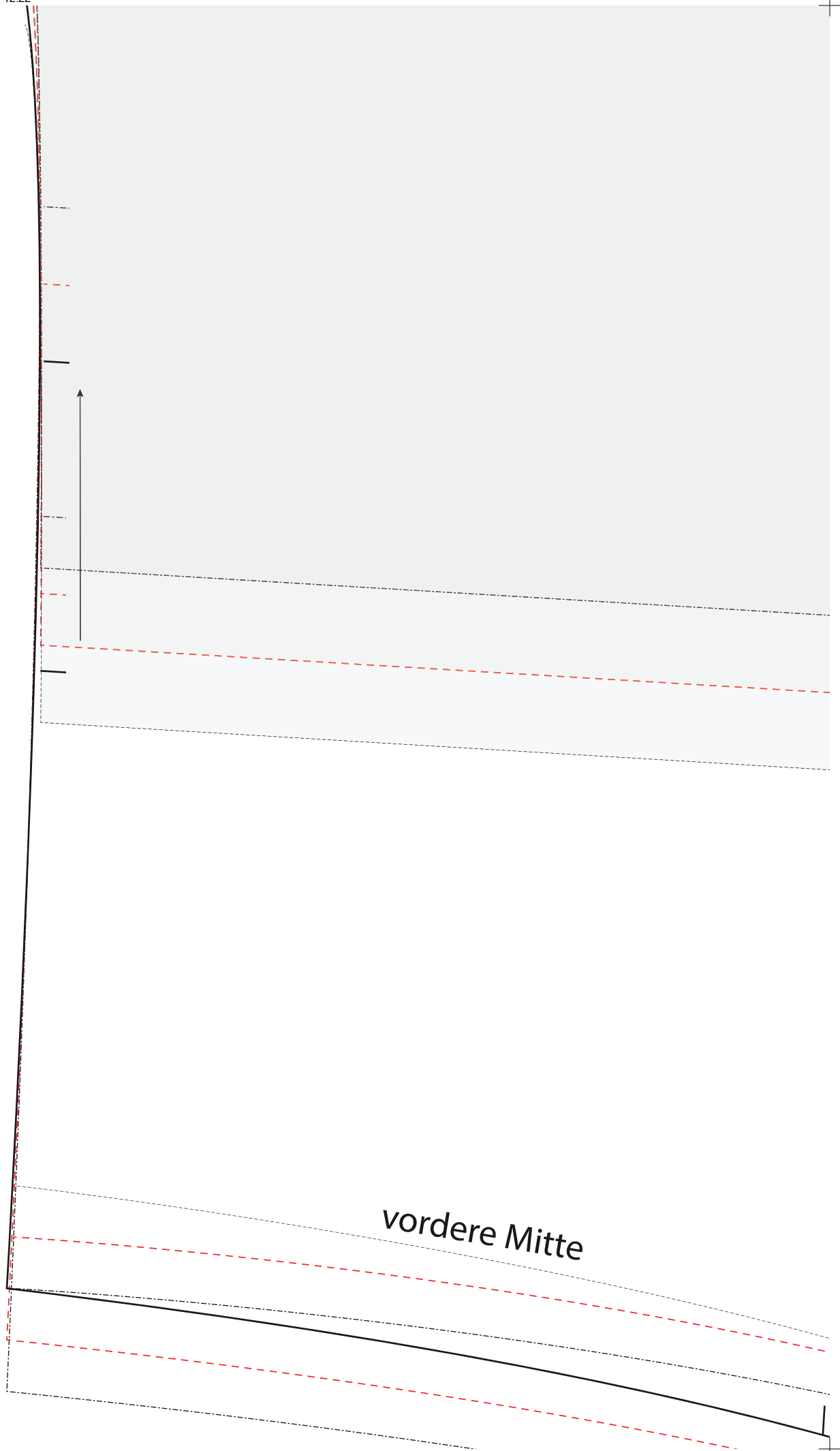


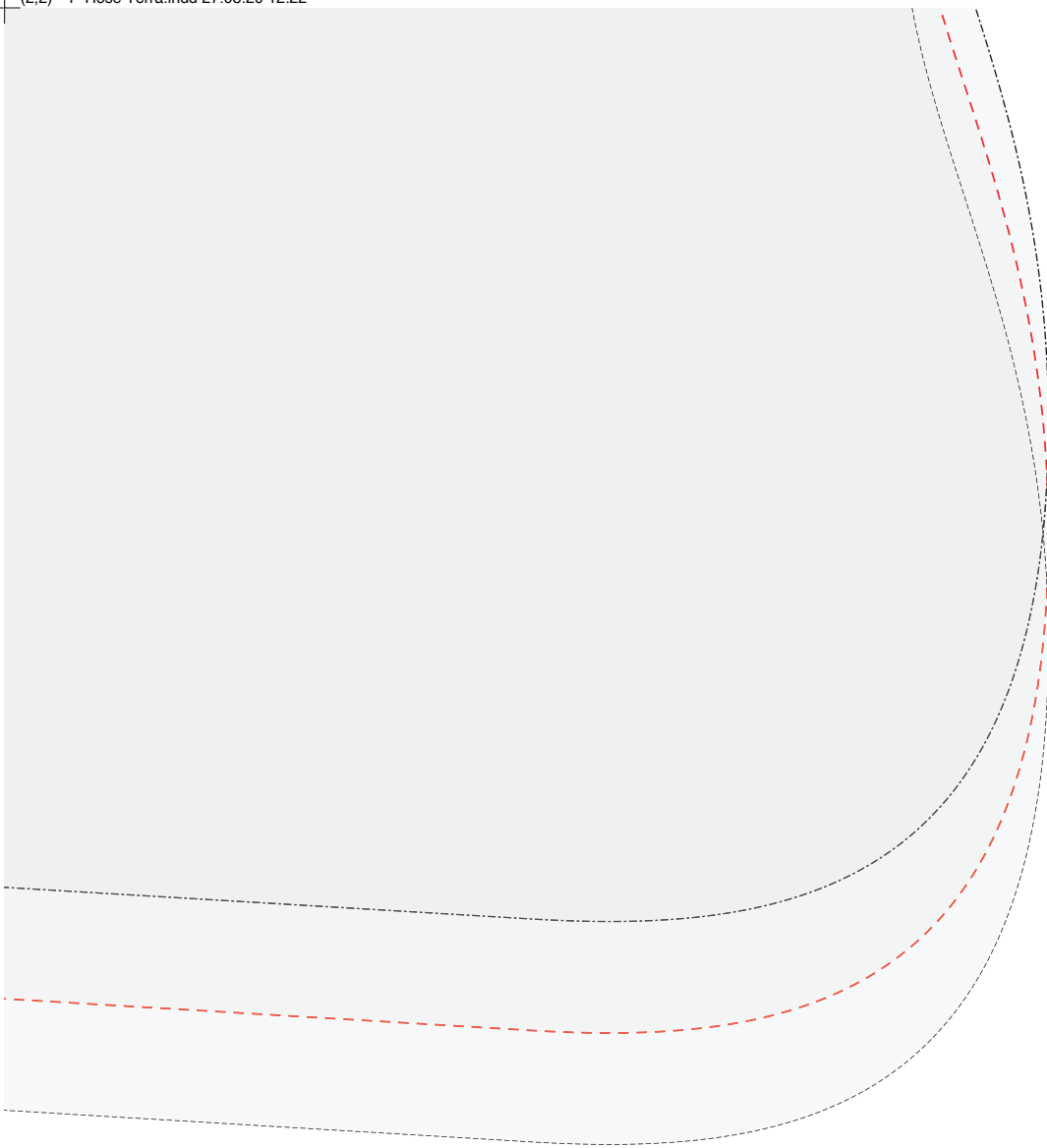
Reißverschluss Untertritt



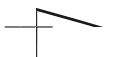
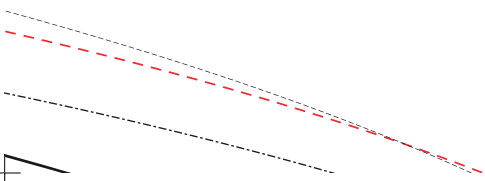








Fa

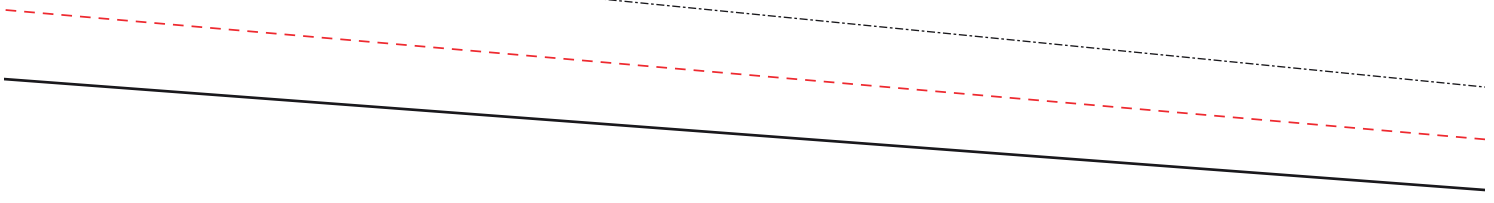


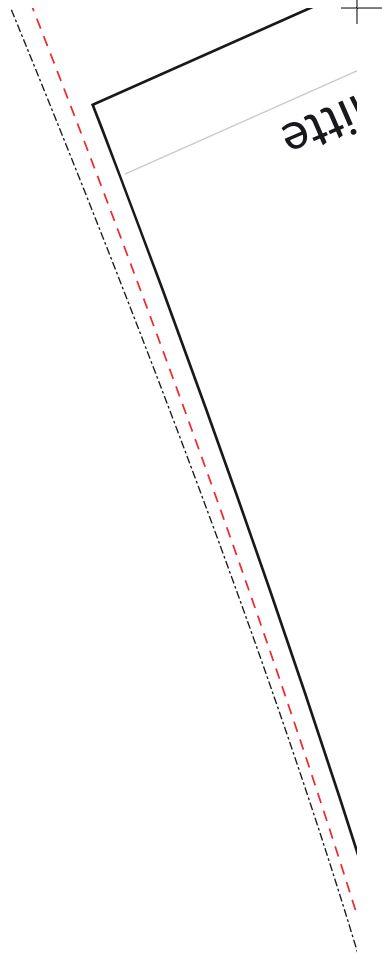
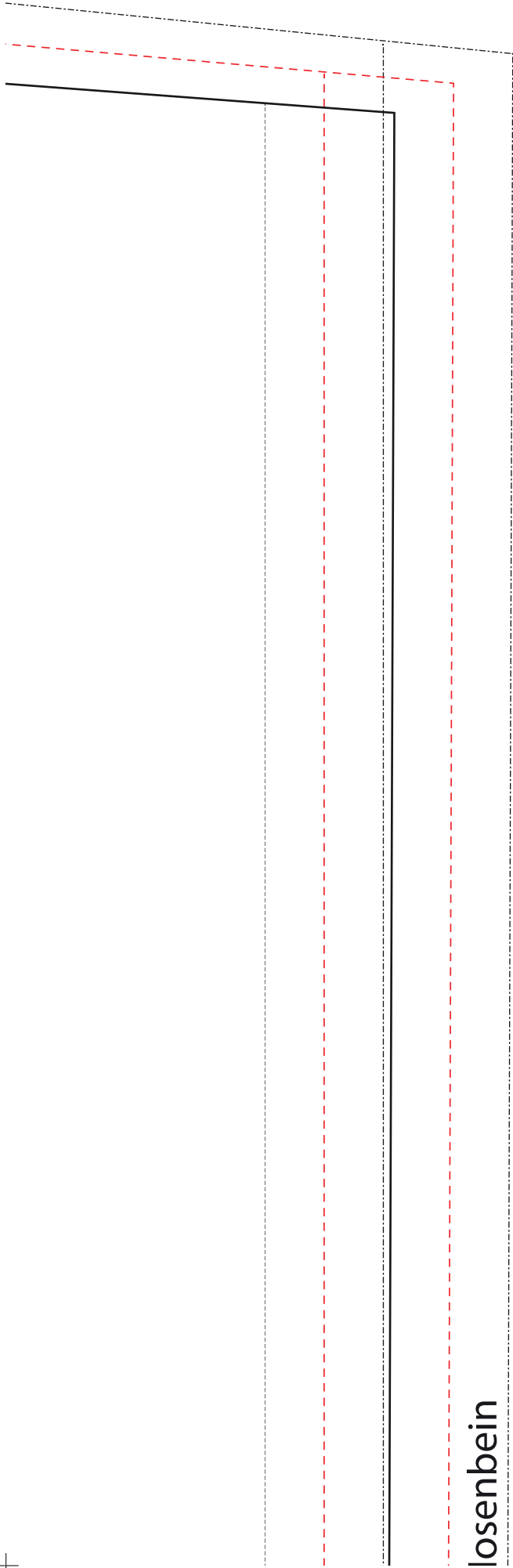


denlauf



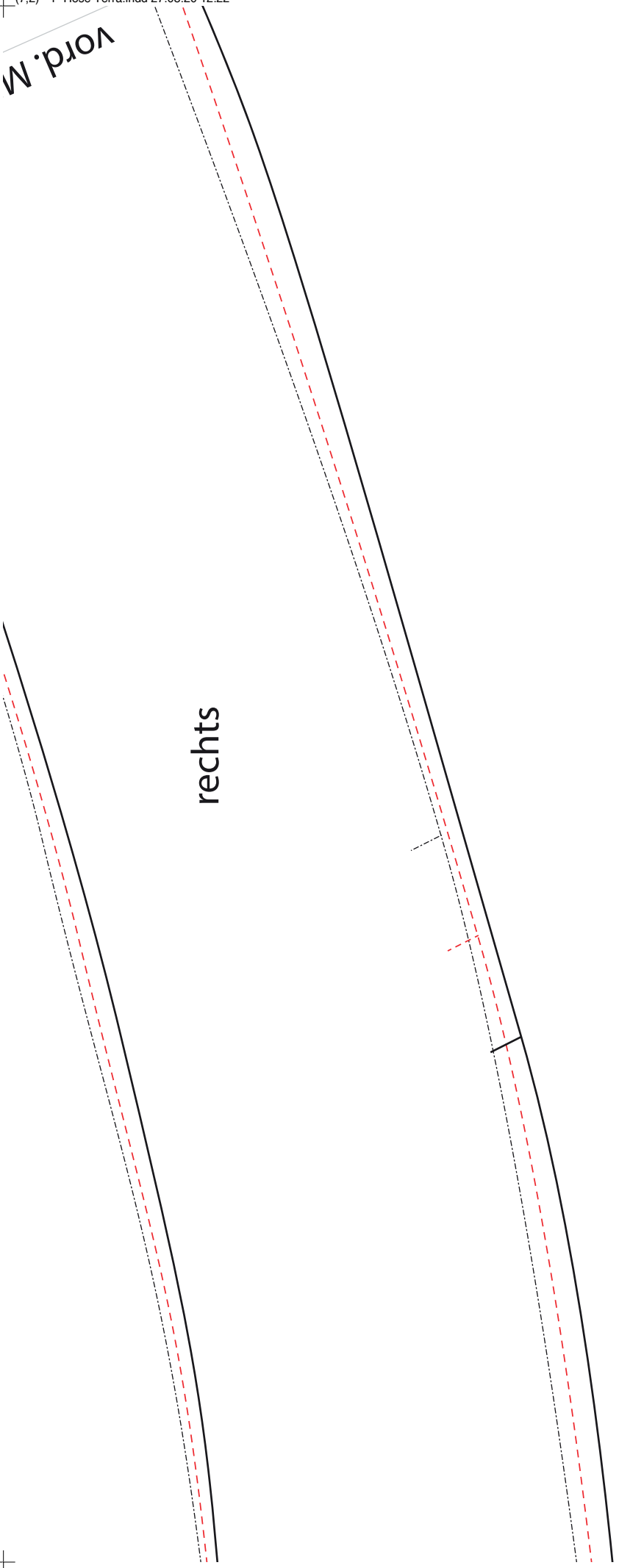






vord.M

rechts

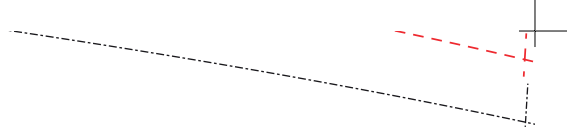
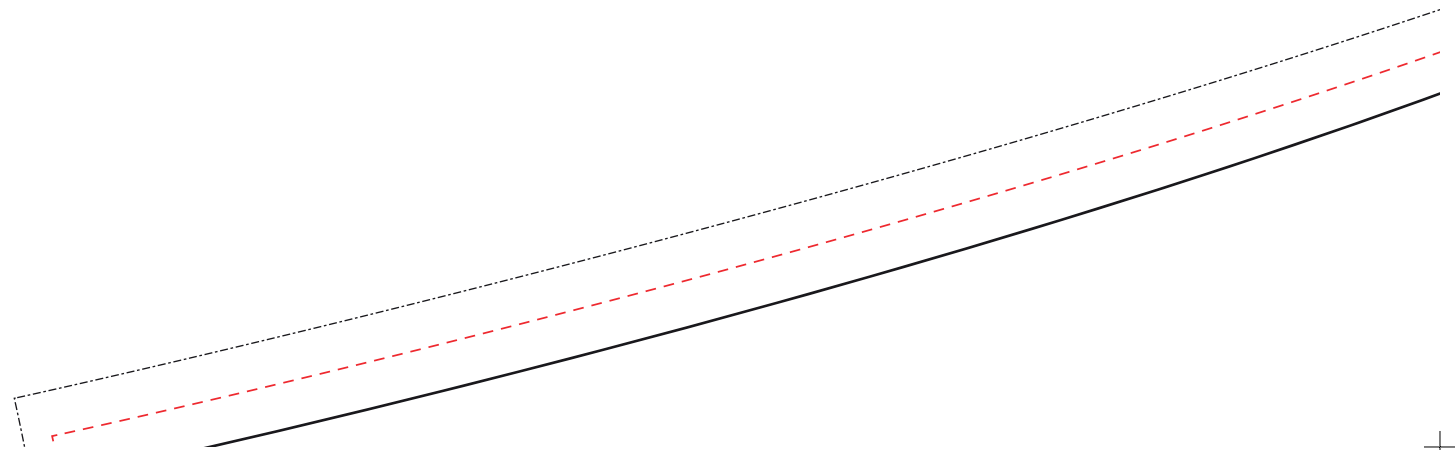


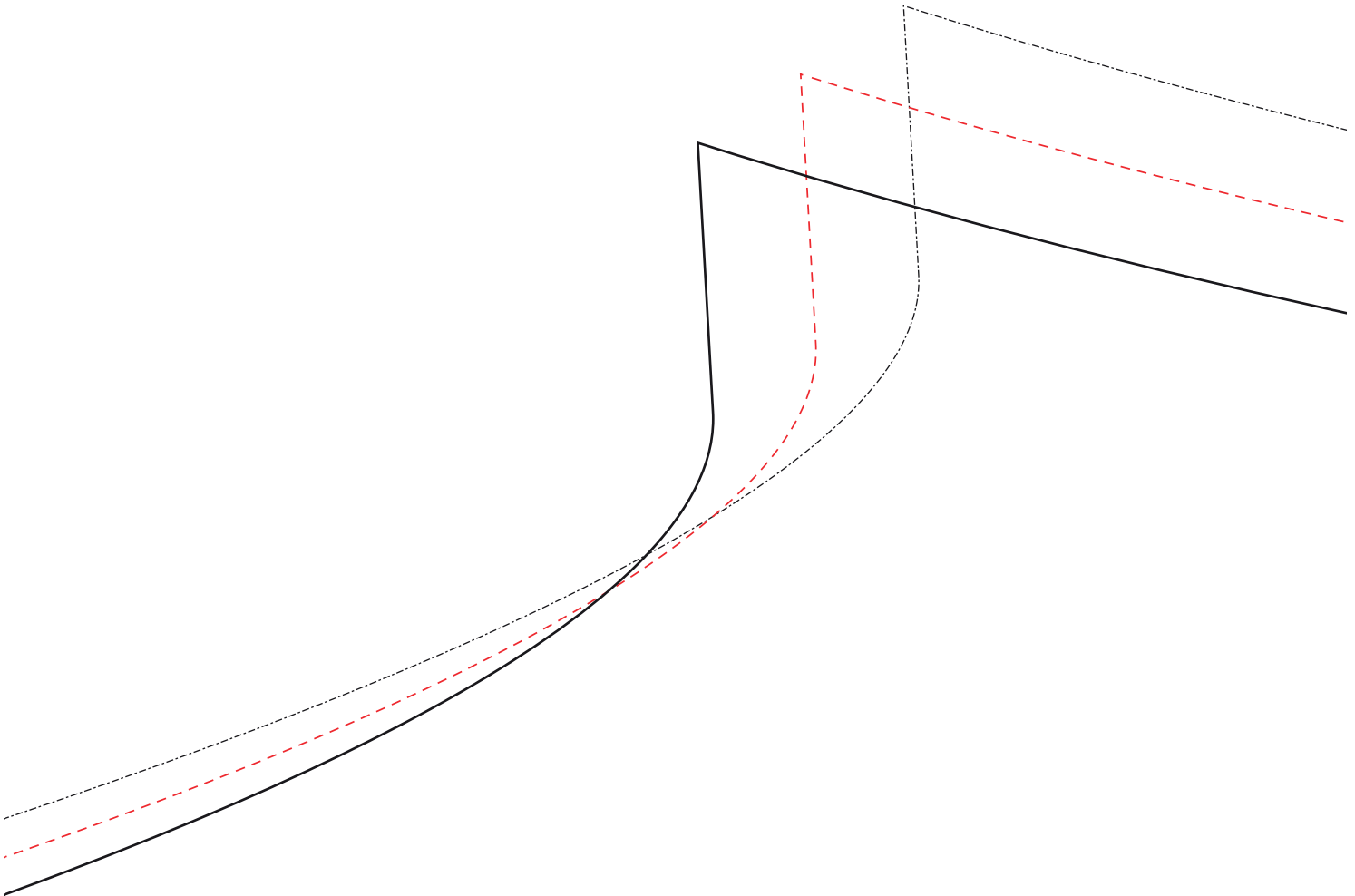
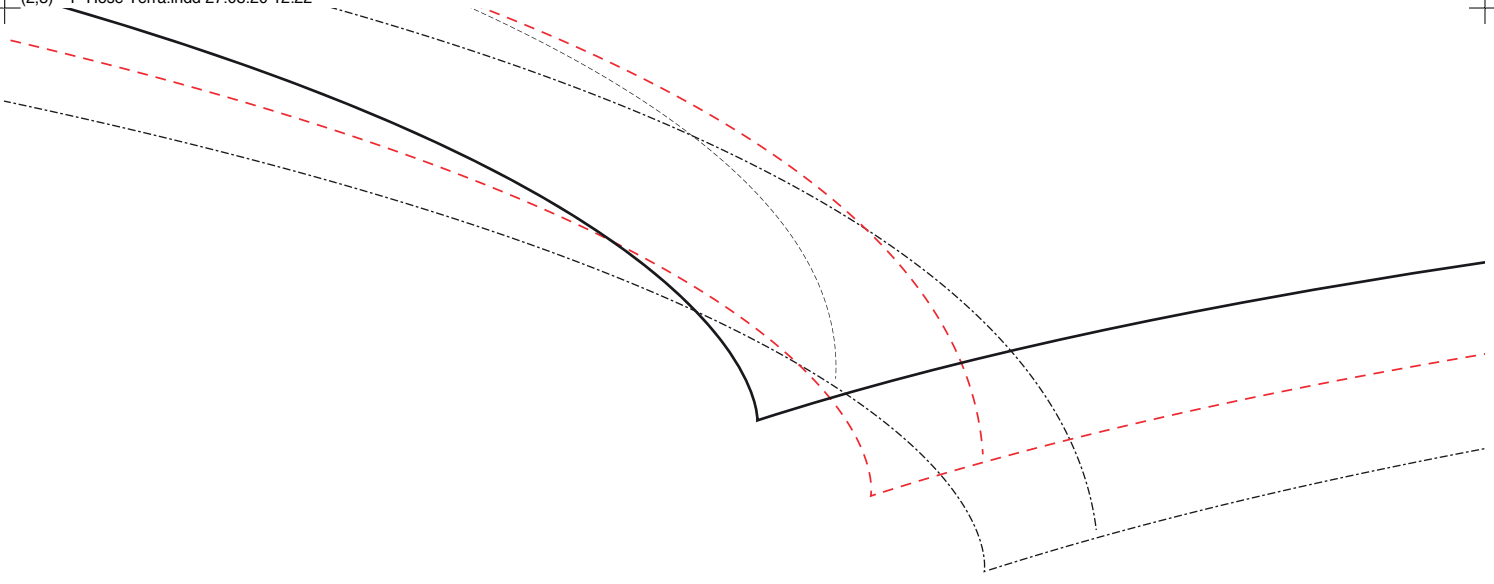
Größe

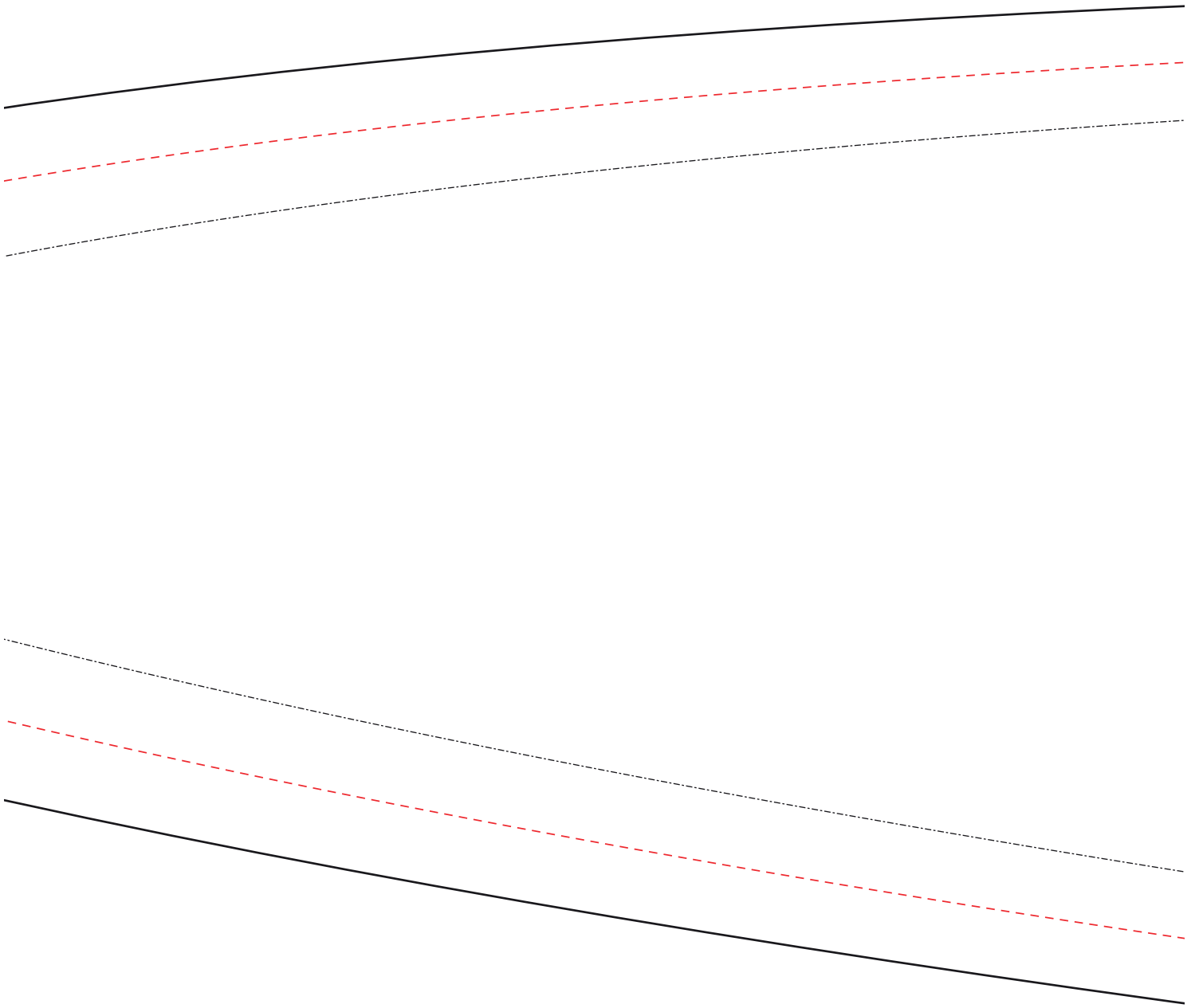
36/38

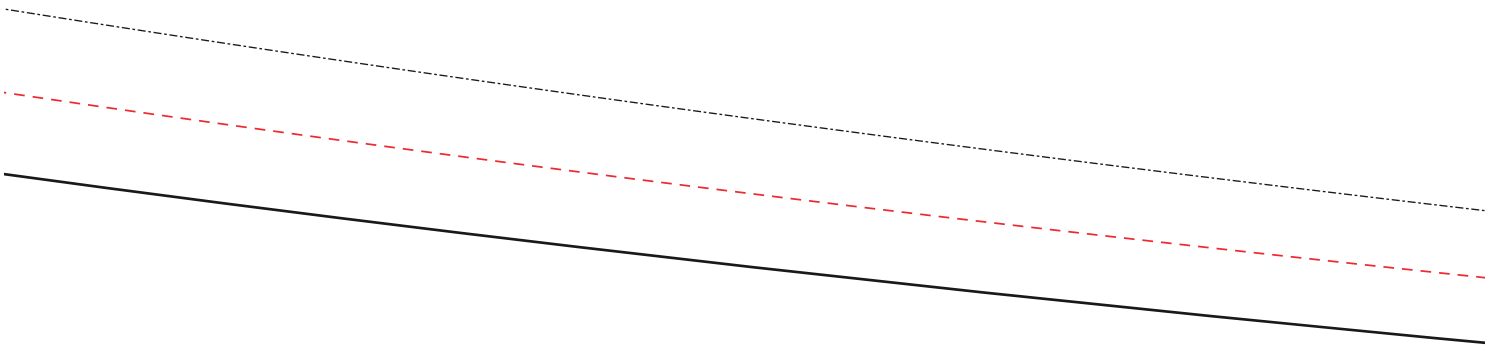
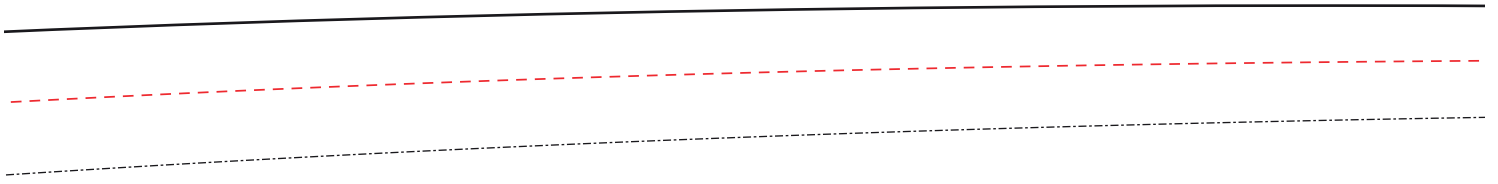
40/42

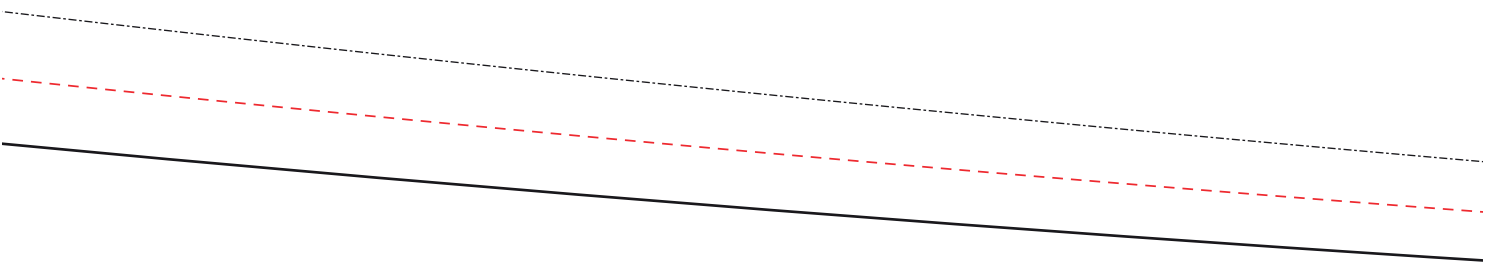
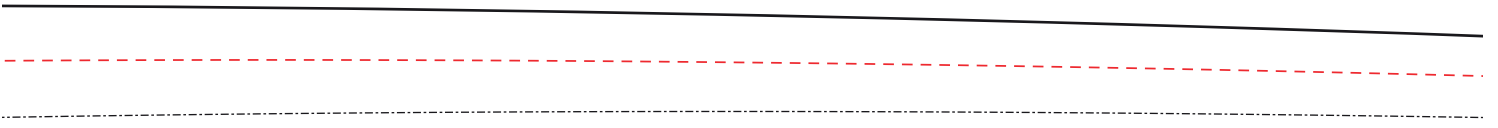
44

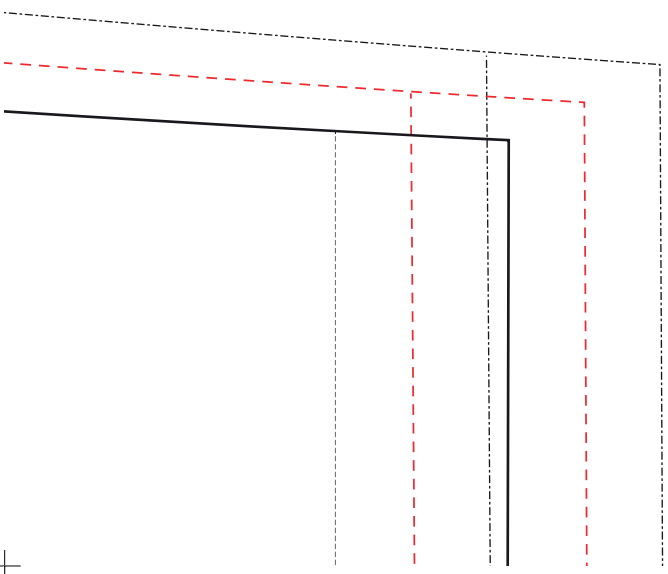
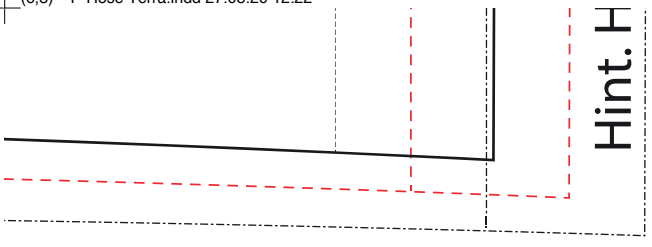


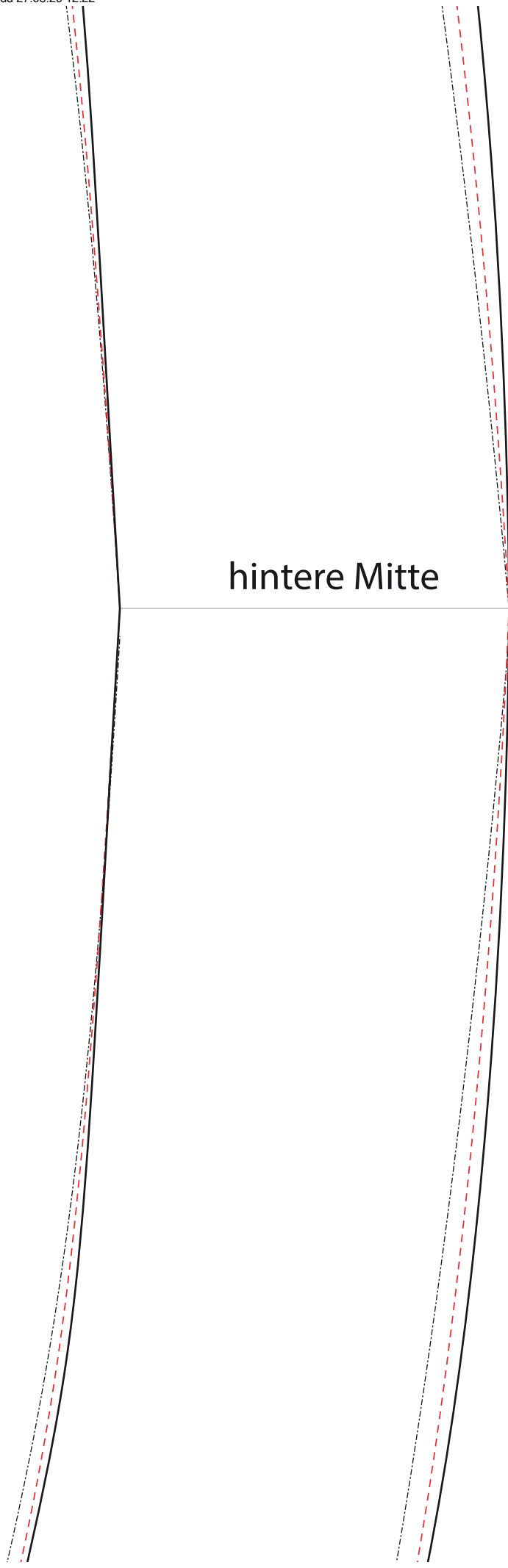






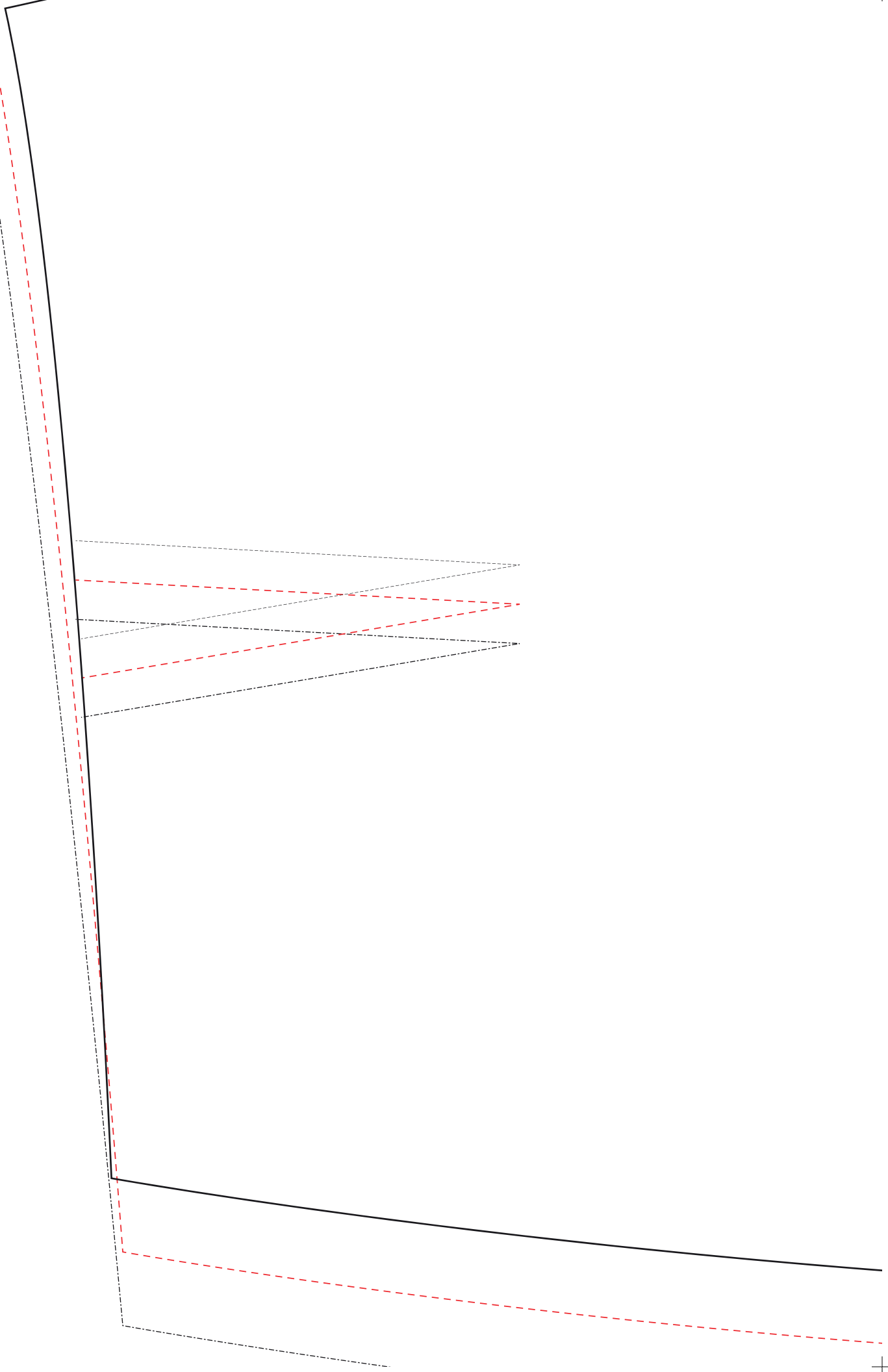






hintere Mitte

Bund

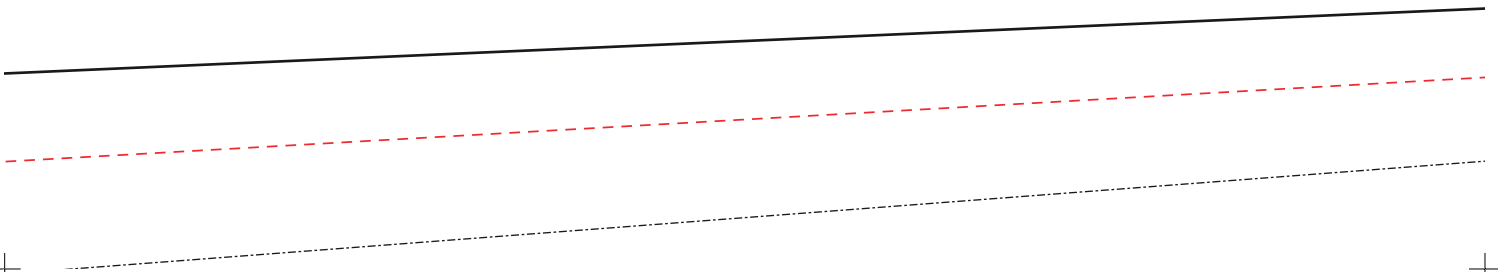


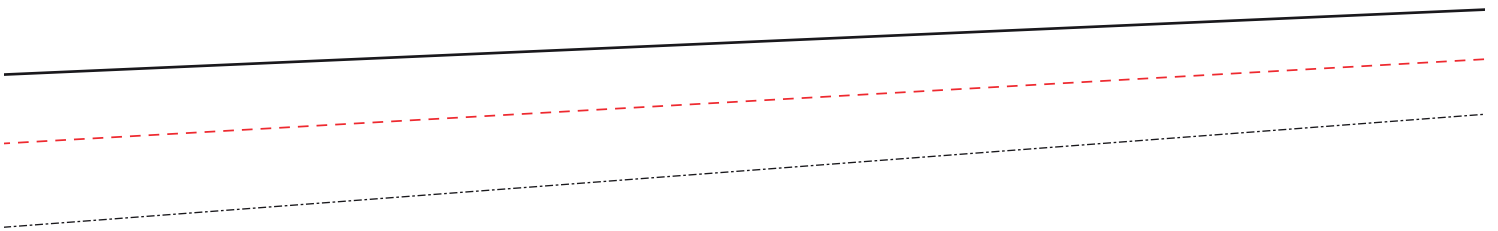
Fa

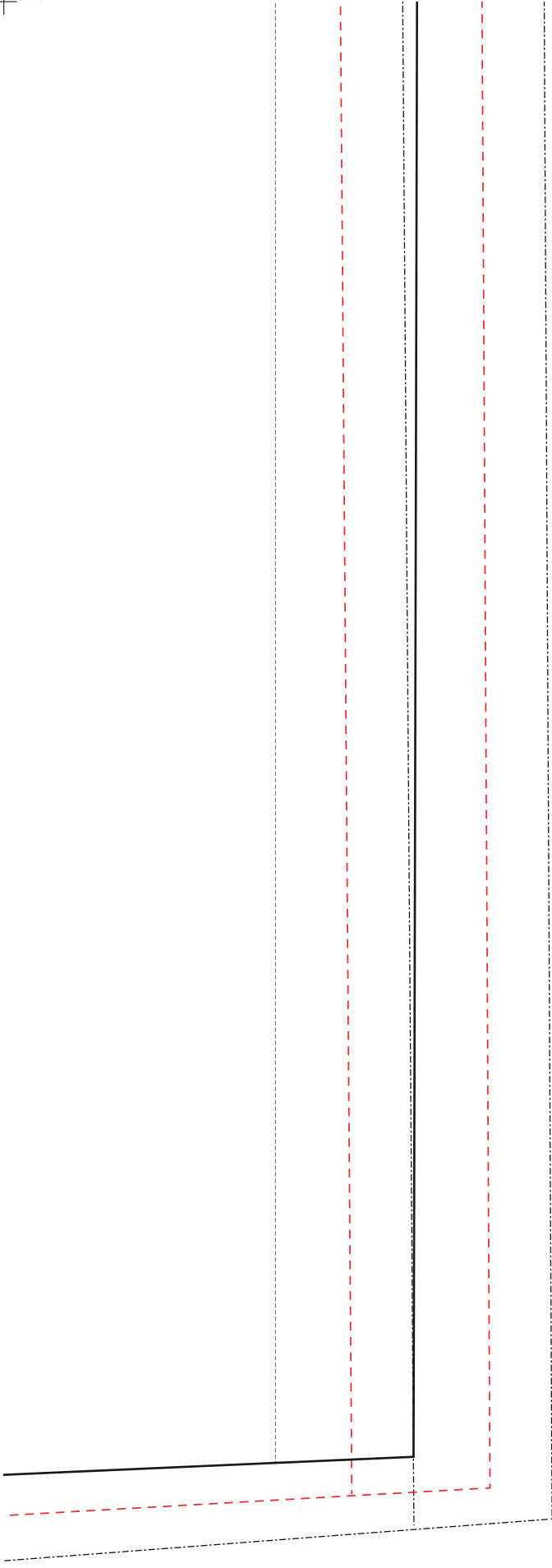


denlauf

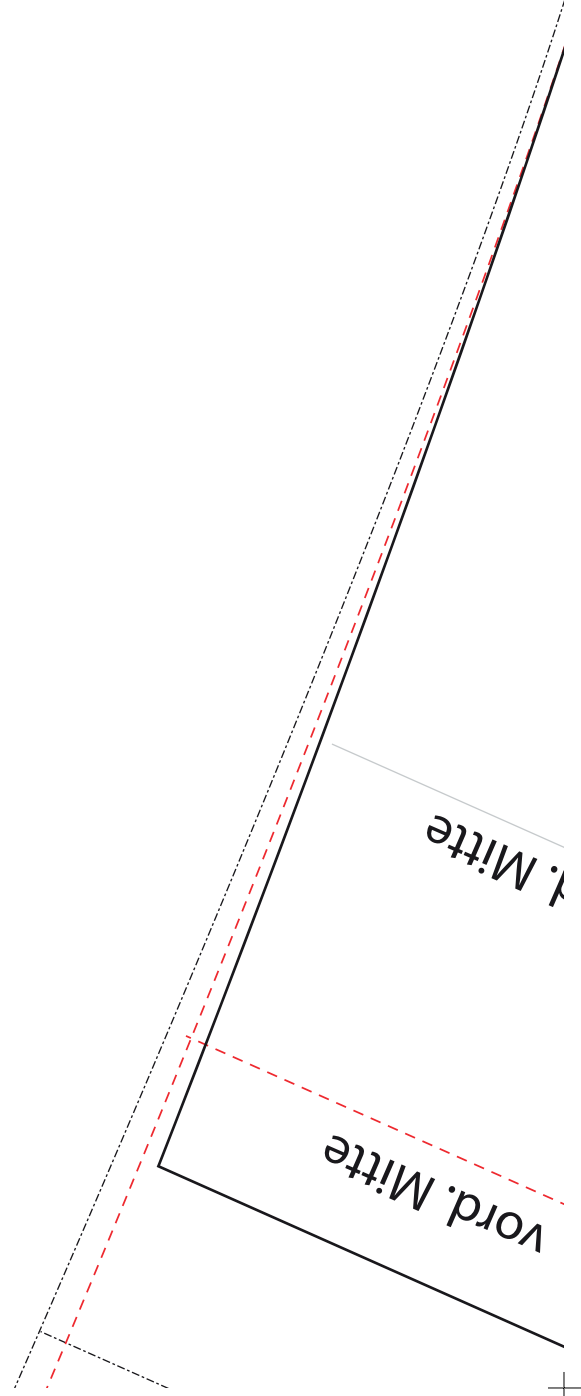




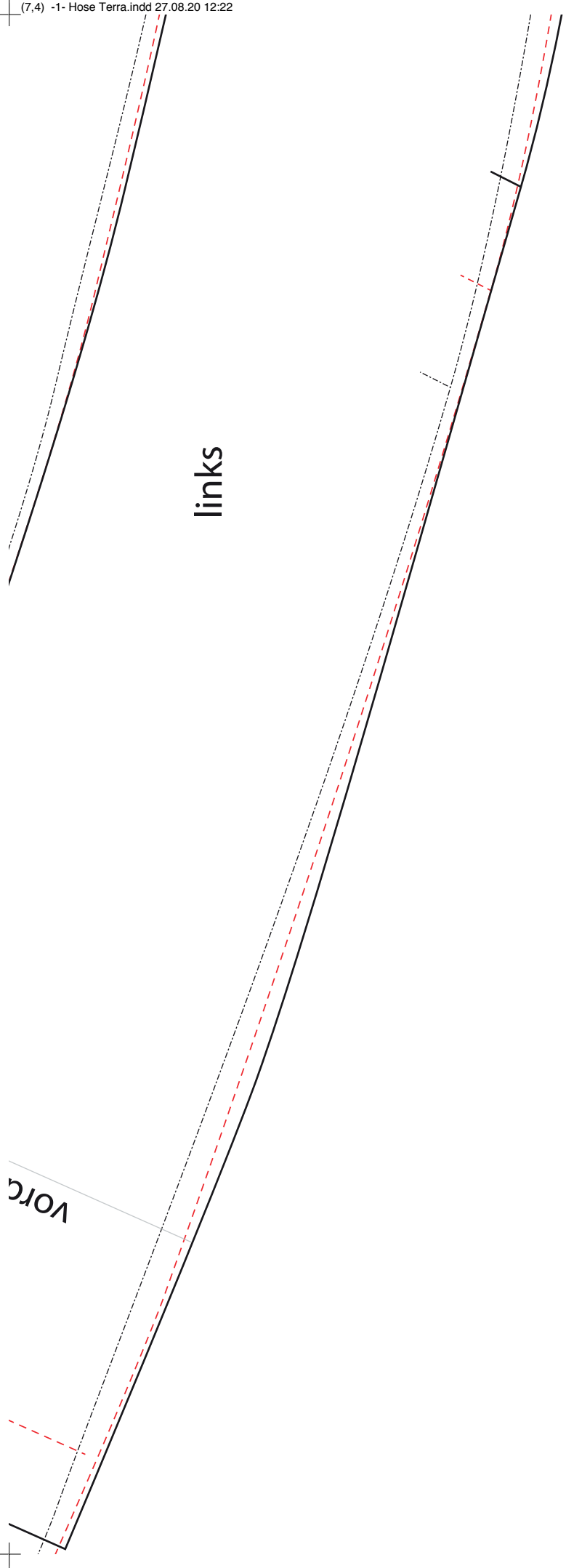




Hint. Hosenbein

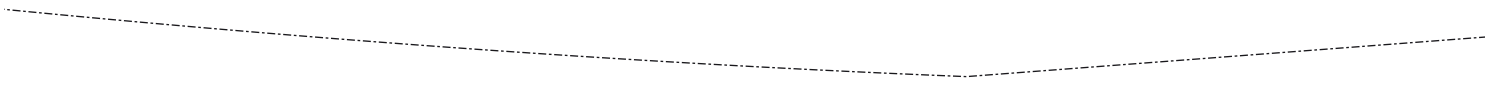


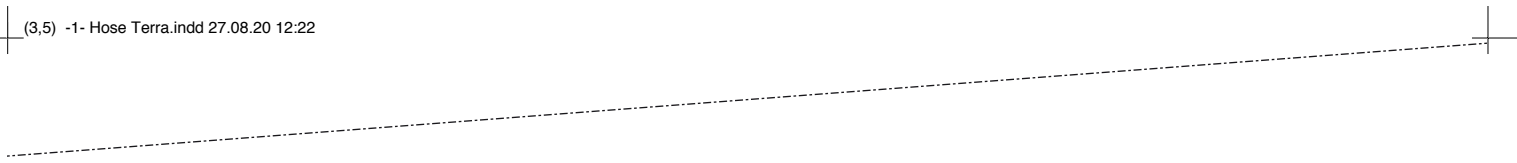
links



VORC

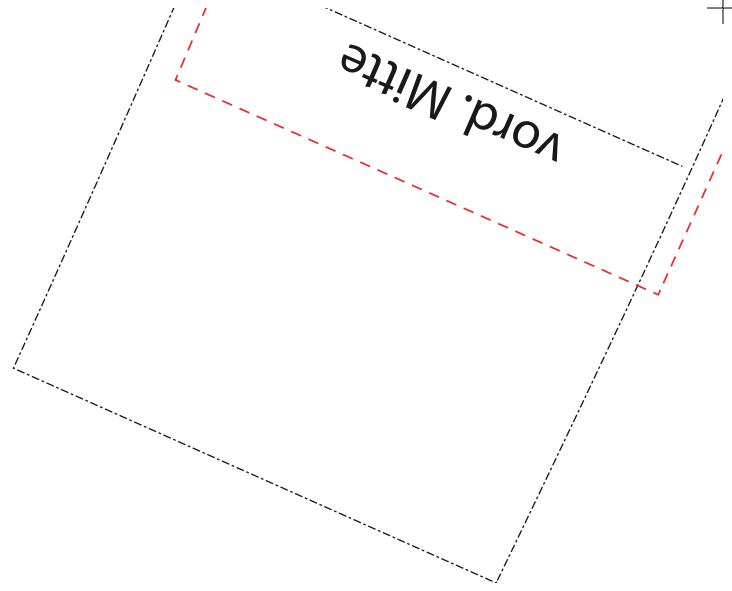












27.08.20 12:22