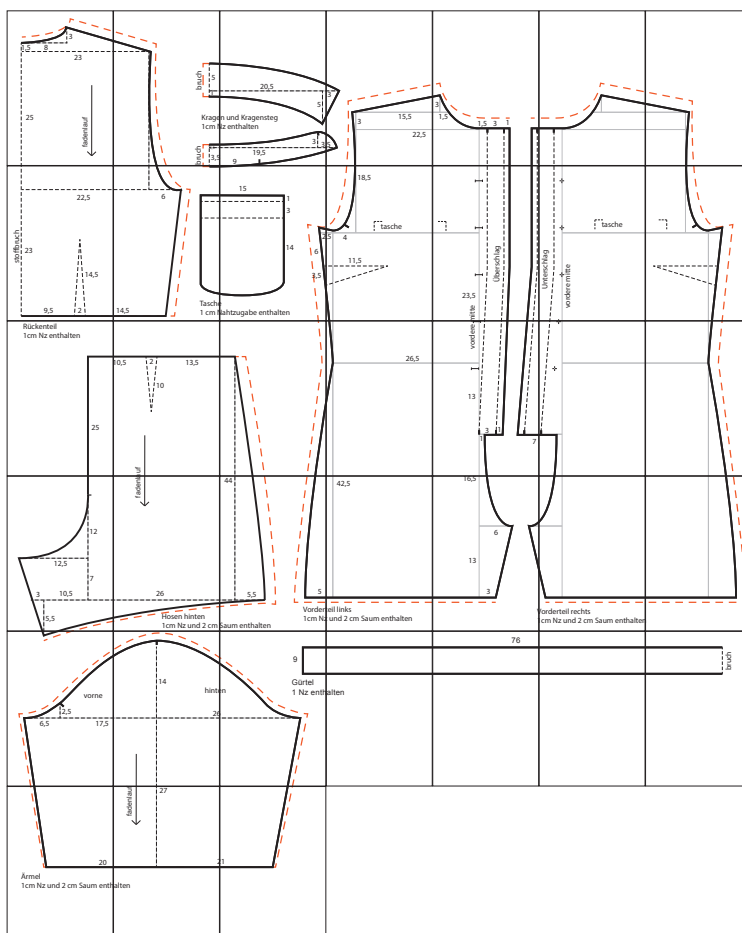


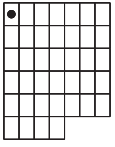
Jumpsuit Kollektion N°5

36/38 und 40/42 (gestrichelte rote Linie)

Drucken Sie die Schnittmusterseiten auf DIN A4 Papier aus. Achten Sie dabei darauf, dass das Druckergebnis in den Druckereinstellung nicht skaliert wird. Das Kontrollkästchen sollte genau 1 cm auf allen Seiten betragen.

Schneiden Sie jeweils an einer langen Seite eine Schnittkante ab und kleben die Seiten gemäß untenstehender Übersicht zusammen.





1cm

1.1
1.1

1,5

8

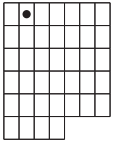
3

23

25

fadenlauf





1.2

1cm

bruch

5

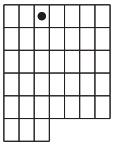
1

Kragen
1cm Nz

bruch

0,5

3,5



1.3

1cm

20,5

3

5

en und Kragensteg
Nz enthalten

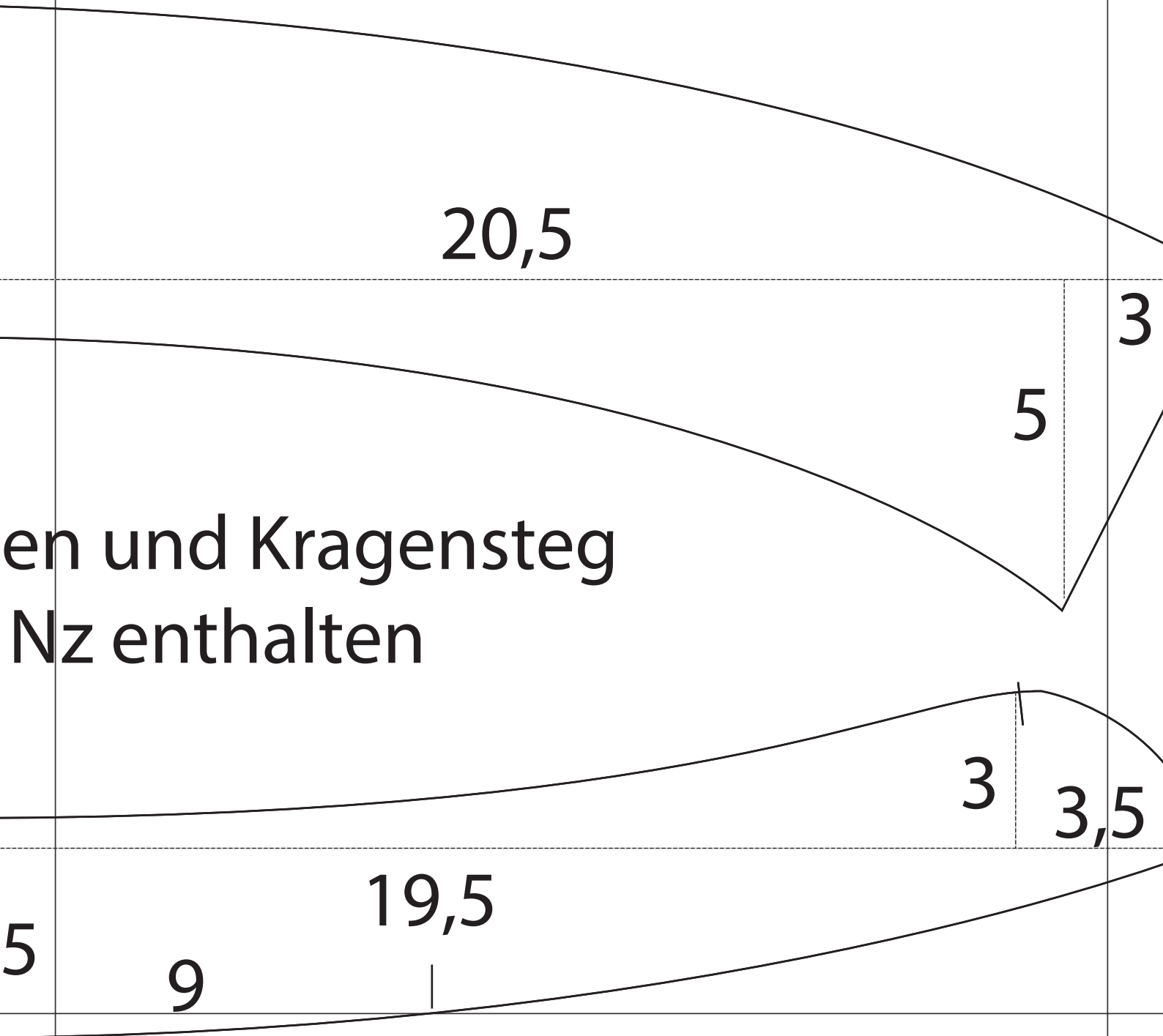
3

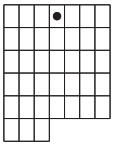
3,5

19,5

5

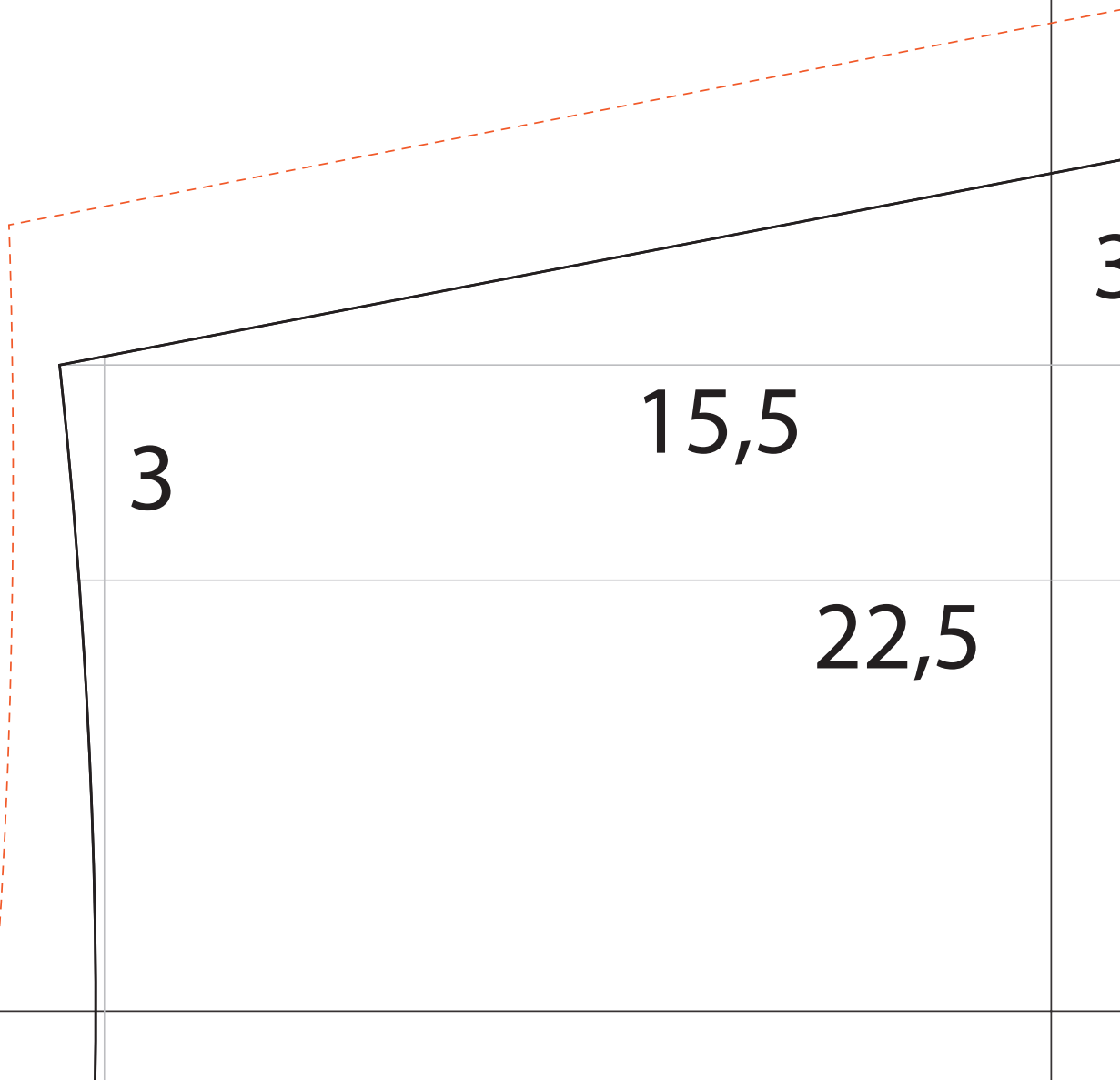
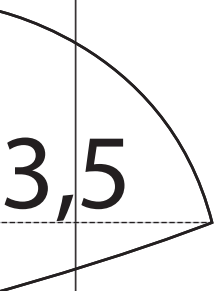
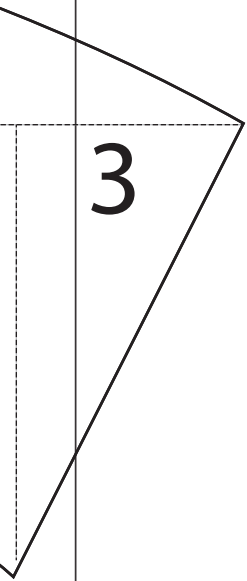
9

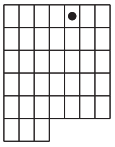




1.4

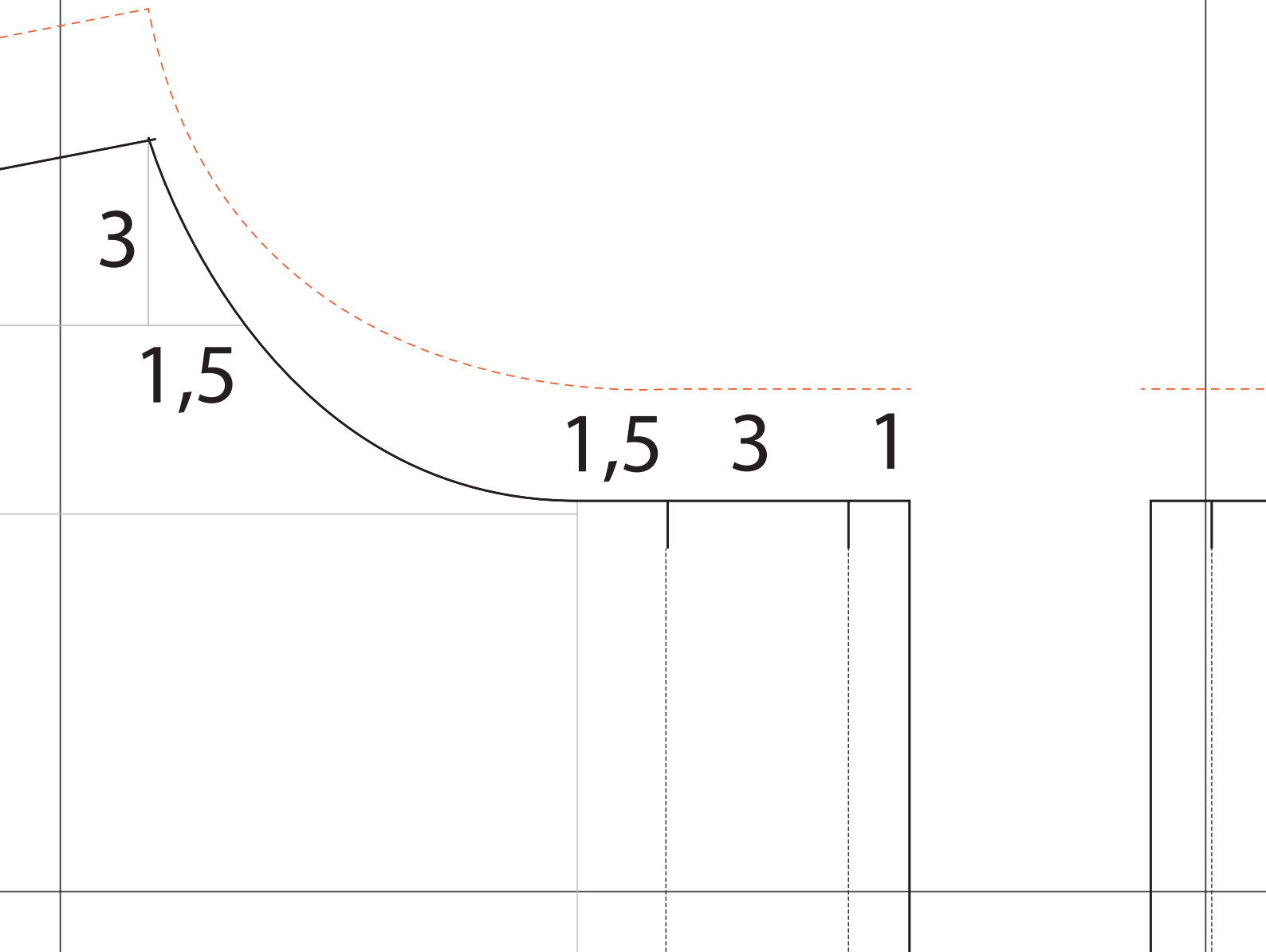
1cm

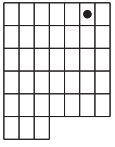




1.5

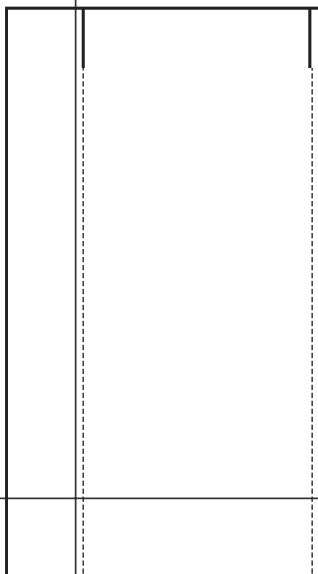
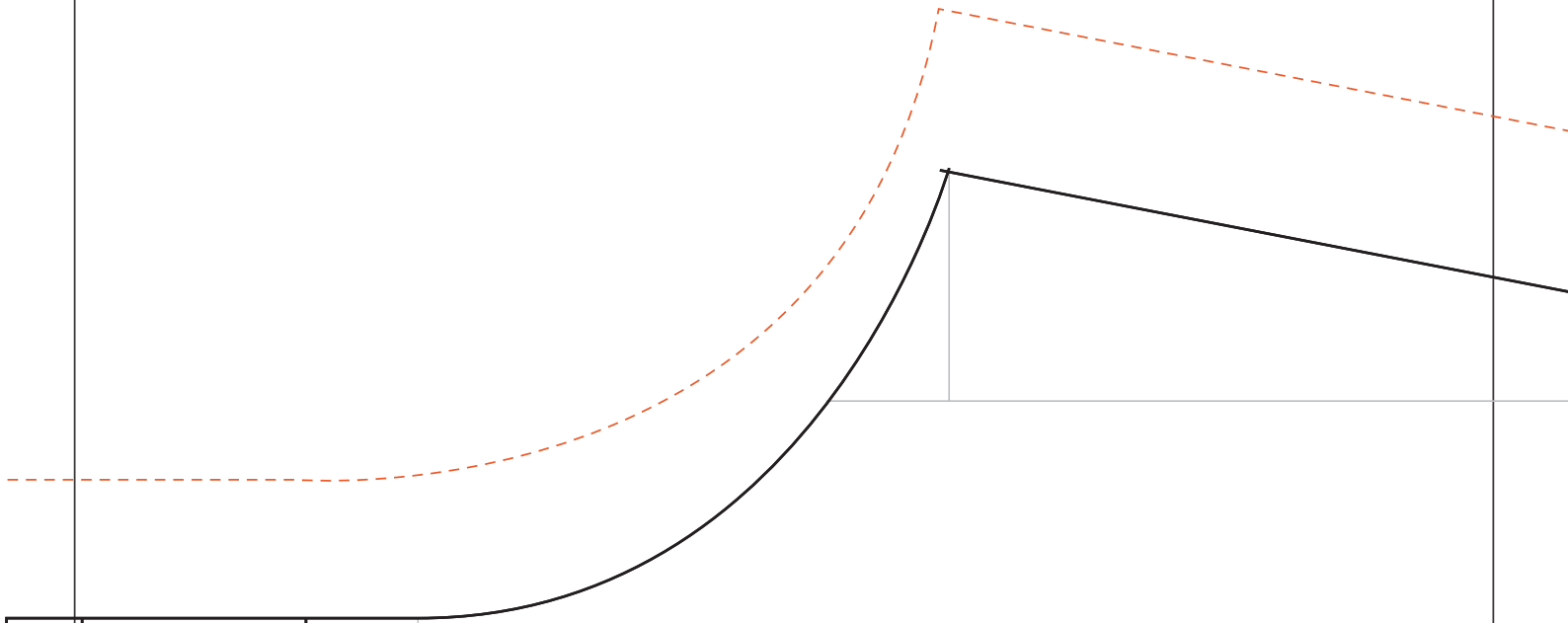
1cm

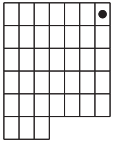




1.6

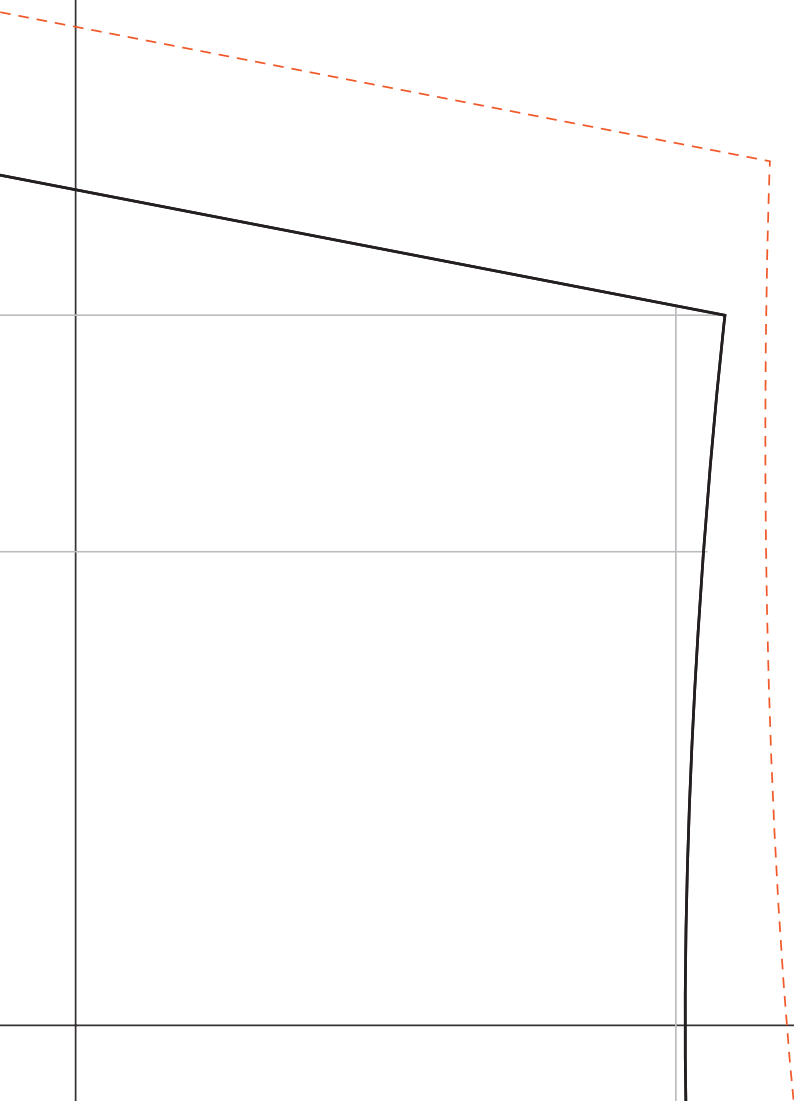
1cm

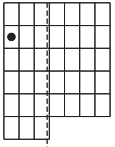




1.7

1cm

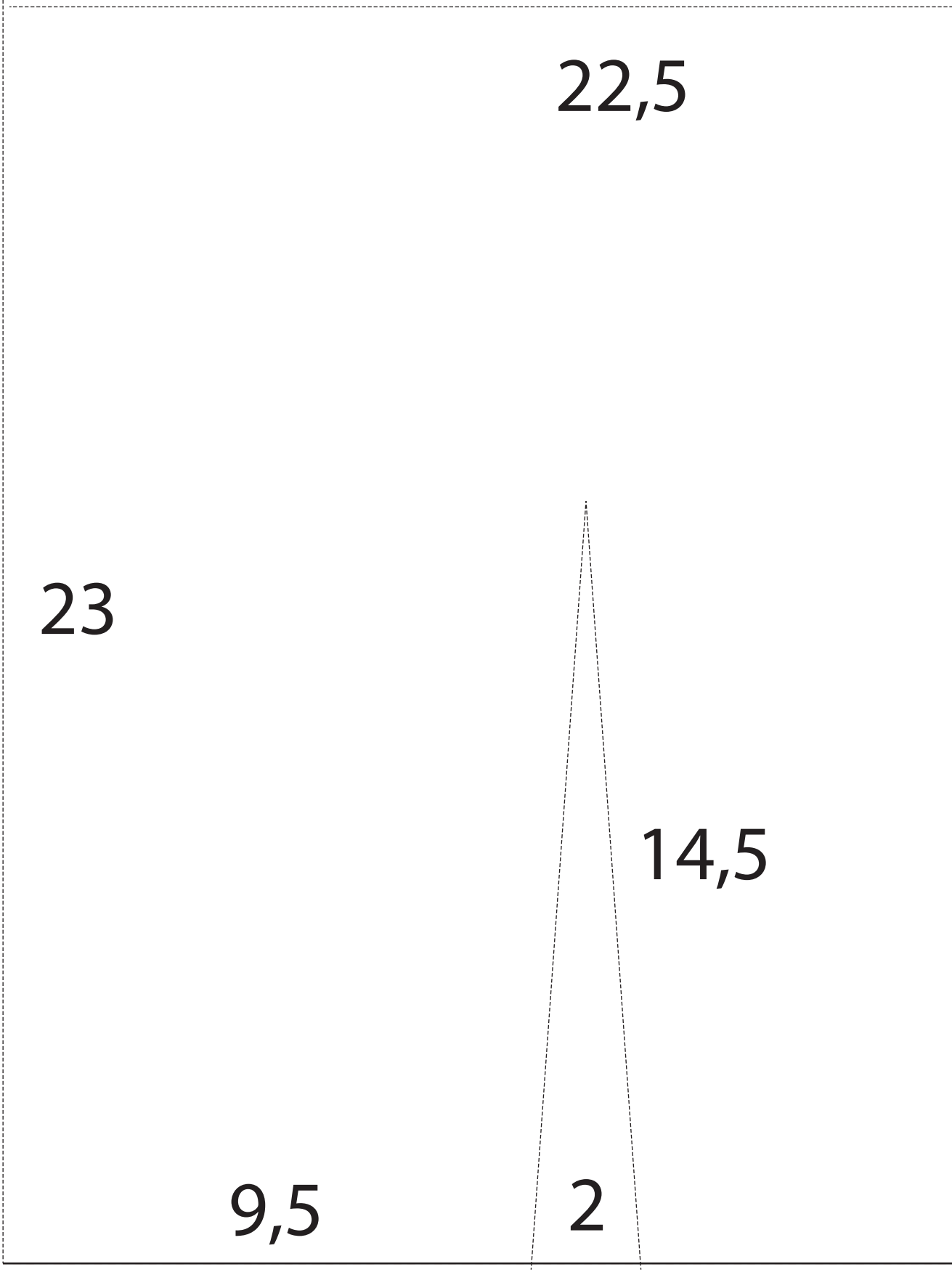


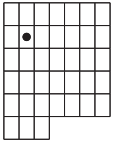


2.1

1cm

stoffbruch





2.2

6

14,5

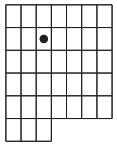
br

1cm

5,5

Tasche
1 cm Naht

9



2.3

1cm

15

1

3

14

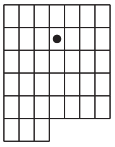
2,5

6

3,5

ne

Nahtzugabe enthalten



2.4

1cm

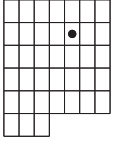
18,5

tasche

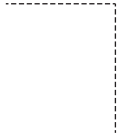
2,5

4

11,5



2.5

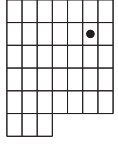


23,5

mitte

Überschlag

1cm



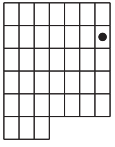
2.6

1cm

Unterschlag

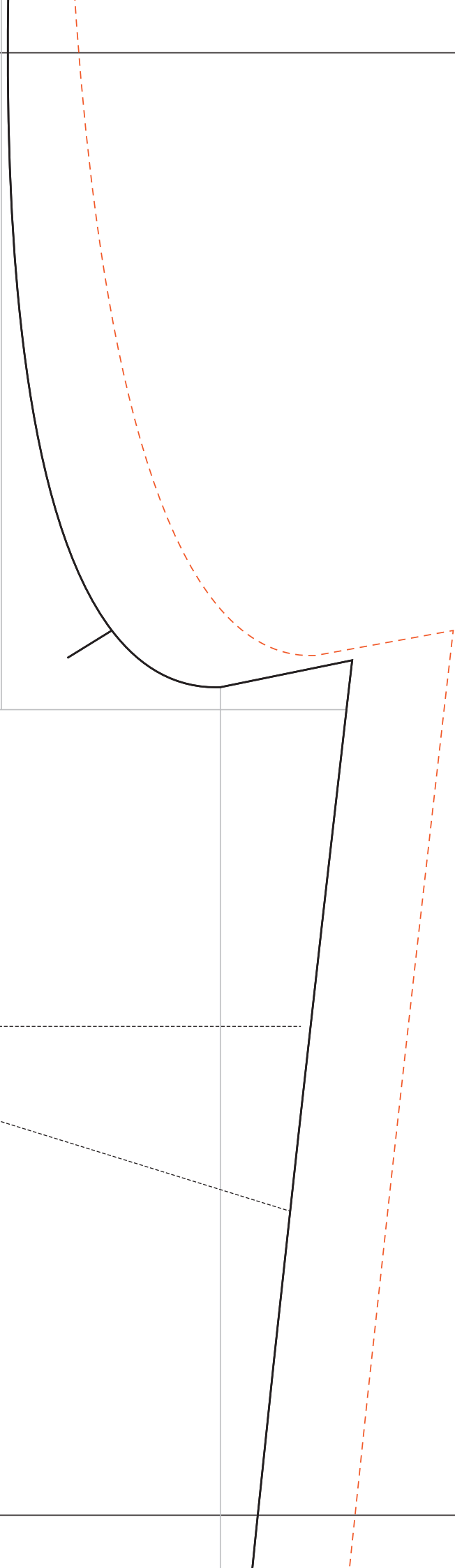
vordere mitte

tasche



2.7

1cm





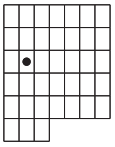
Rückenteil

1cm

3.1 1 cm Nz enthalten

10,

25



3.2

1cm

10,5

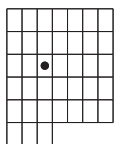
2

13,5

10

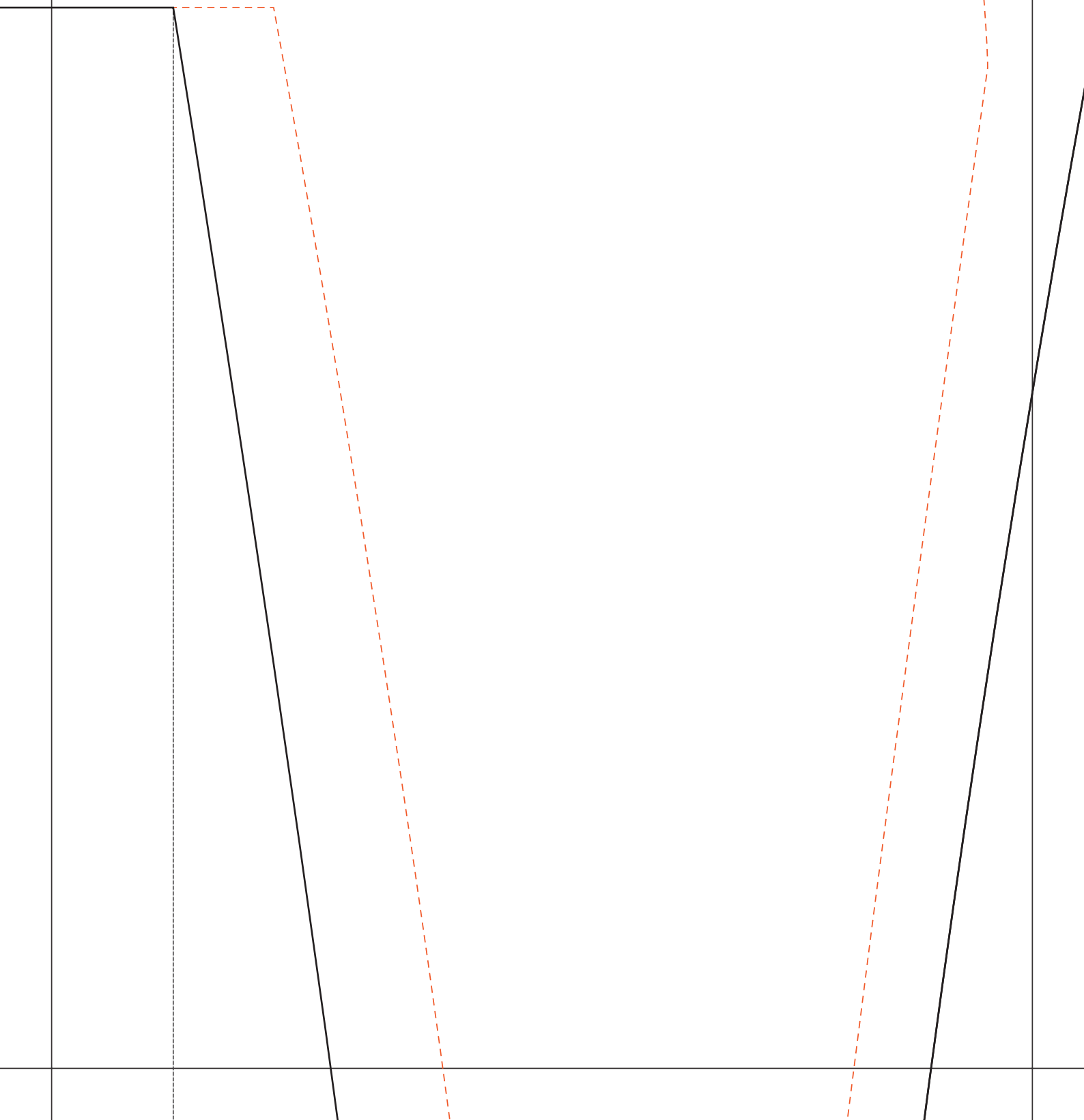
auf

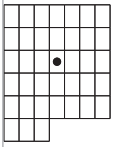
Nantzugabe enthalten



3.3

1cm

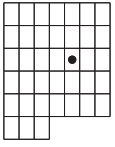




3.4

1cm

26,5



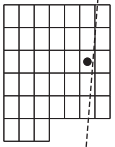
3.5

vordere mit

13

1cm



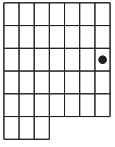


3.6



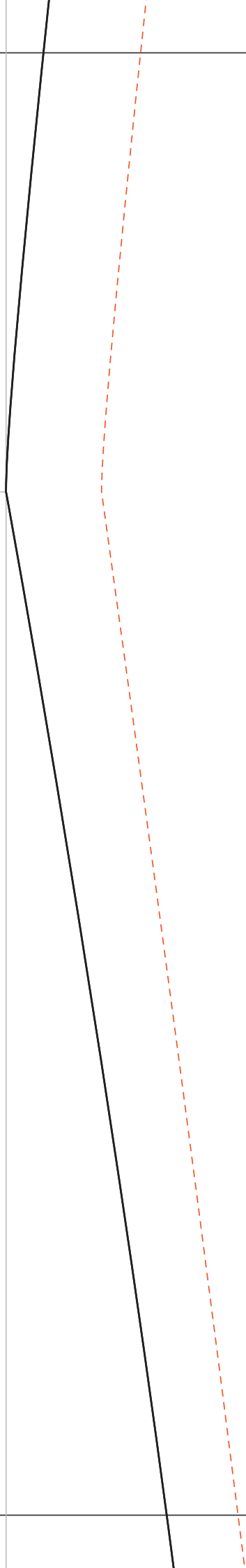
1cm

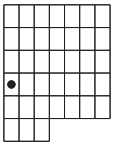
7



3.7

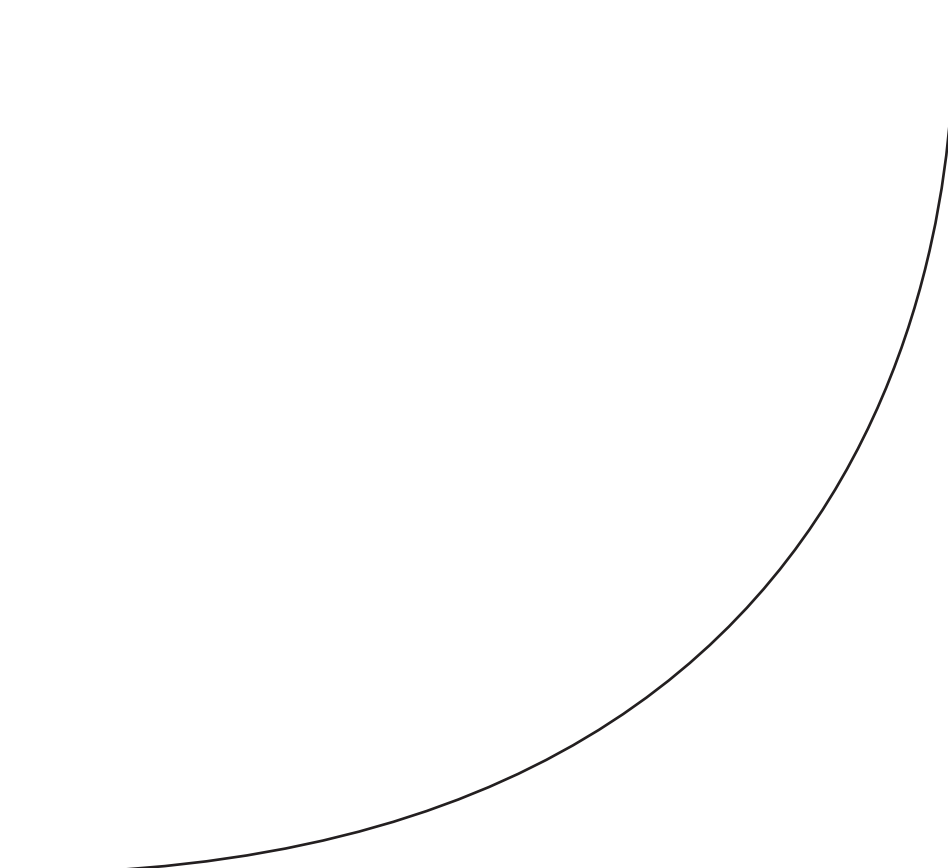
1cm





4.1

1cm



12

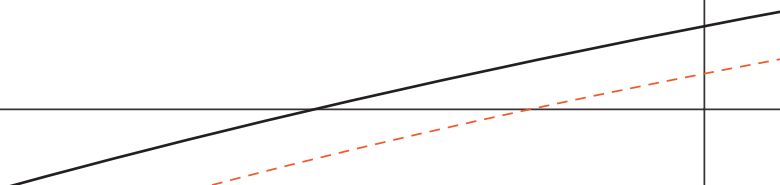
12,5

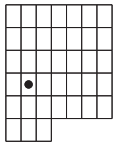
7

3

10,5

5,5





4.2

fadenlauf



1cm

4

26

Hosen hinten

1cm Nz und 2 cm Sa

44

4.3

5,5

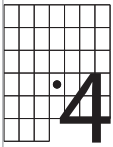
1cm

5

Vorderteil

1cm Nz u

n Saum enthalten



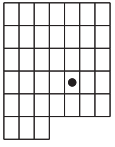
42,5

4.4

1cm

erteil links

nz und 2 cm Saum enthalten



4.5

16,5

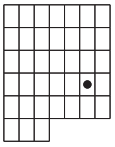
1cm

6

13

3

V
1

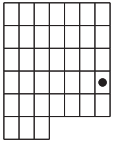


4.6

1cm

Vorderteil rechts

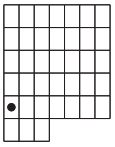
1cm Nz und 2 cm Saum enthalten



4.7

1cm

ten



5.1

5,5

1cm

vorne

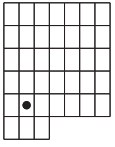
2,5

6,5

17,5

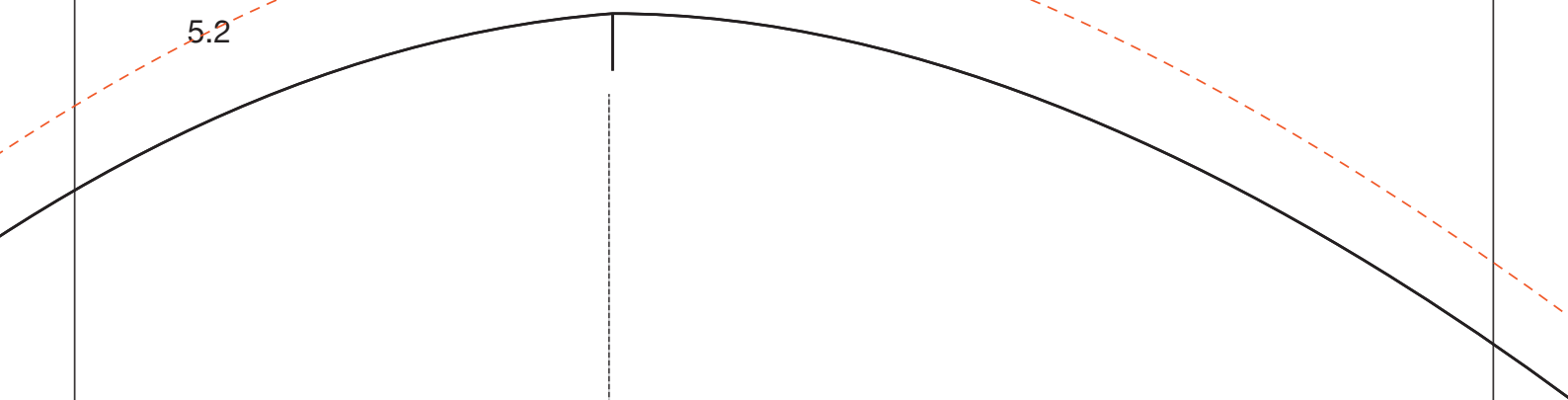
Hosenhinter

1cm Nz und 2 cm Sa



5.2

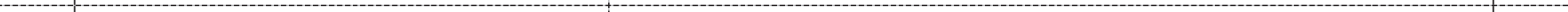
1cm



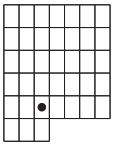
14

hinten

26



n Saum enthalten



5.3

1cm Nz U

1cm

9

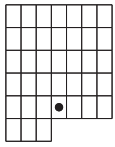
Gürtel

1 Nz enthalten

ten

6

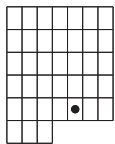
NZ und 2 cm Saum enthalten



5.4

1cm

thalt

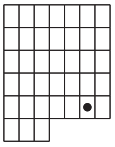


5.5

1cm

76

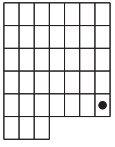
1 cm Nz und 2 cm Saum enthalten



5.6

1cm

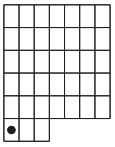
ten



5.7

1cm

bruch



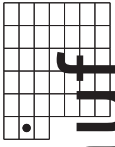
6.1

1cm

20

Ärmel

1cm Nz und 2 cm Saum enthält



6.2

fadenlauf

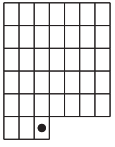


27

1cm

21

halten



6.3

1cm

21

