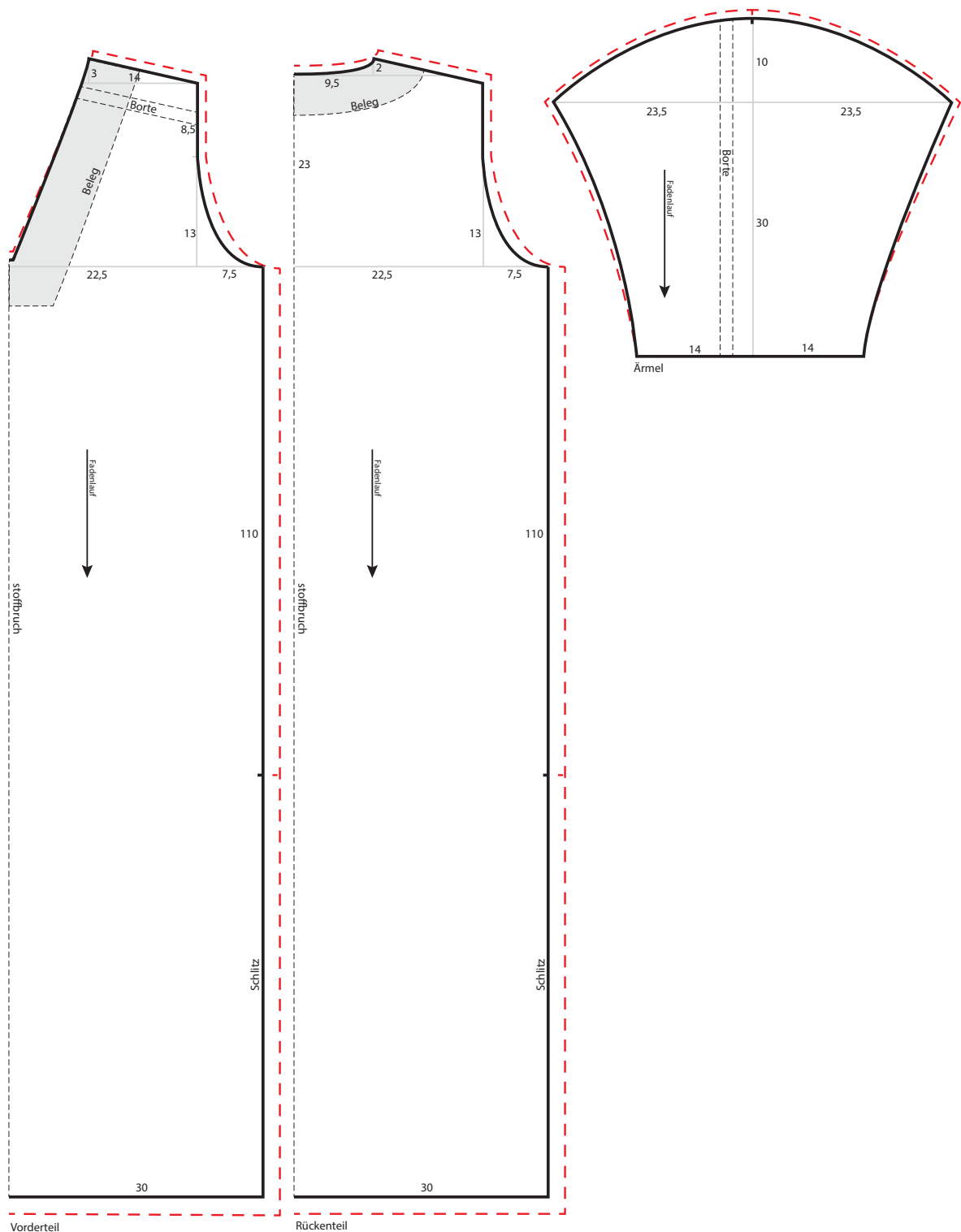
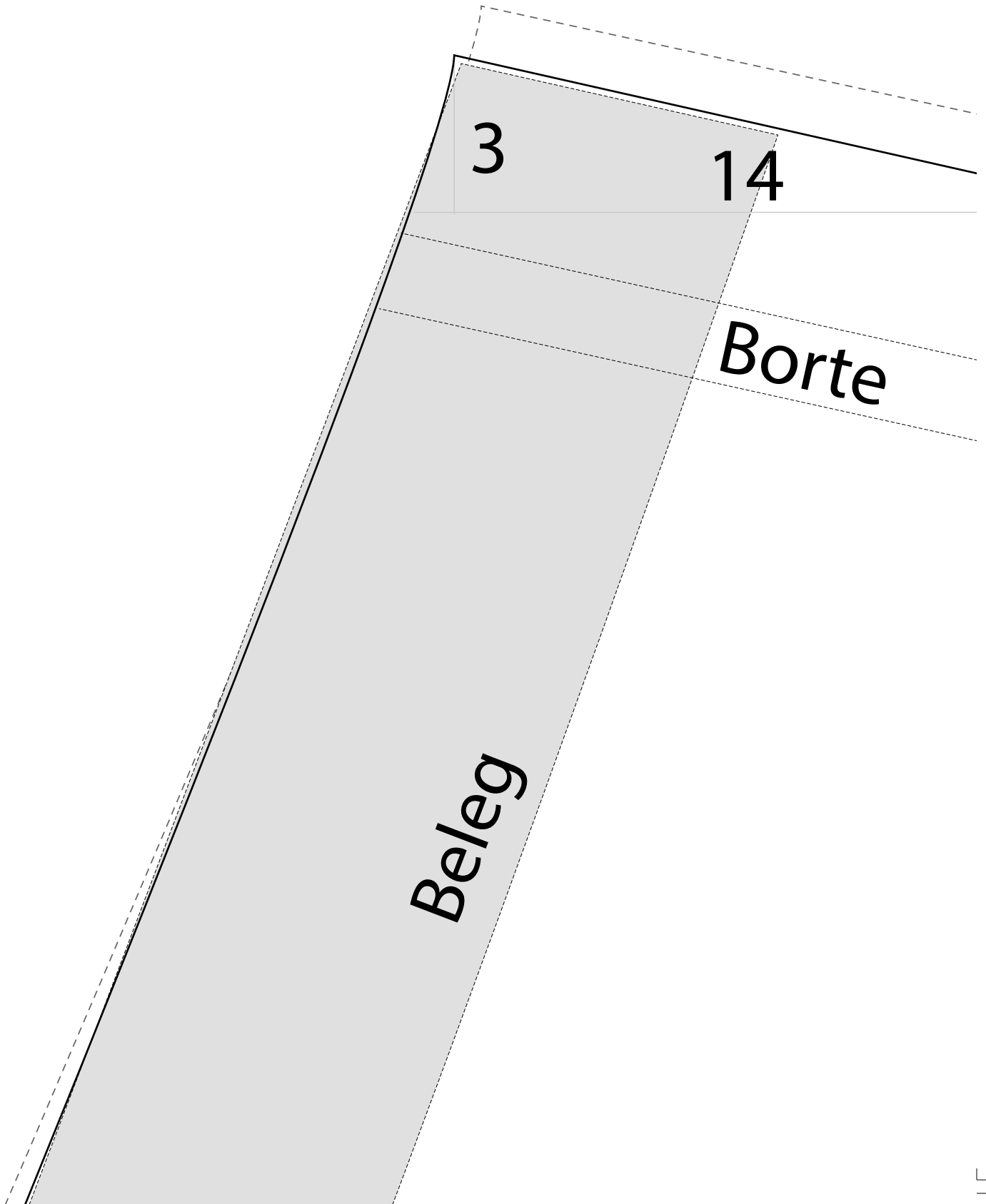


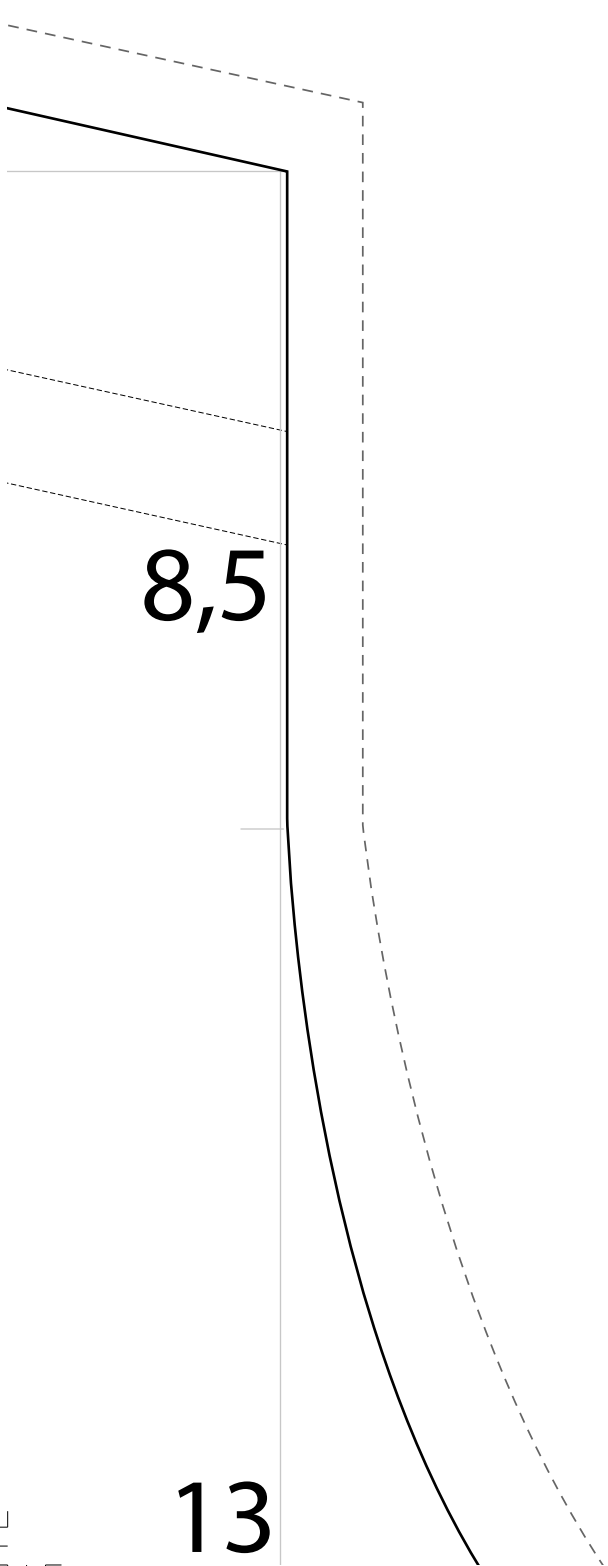
Drucken Sie die Schnittmusterseiten auf DIN A4 Papier aus. Achten Sie dabei darauf, dass das Druckergebnis in den Druckereinstellung nicht skaliert wird. Das Kontrollkästchen sollte genau 1 cm auf allen Seiten betragen.

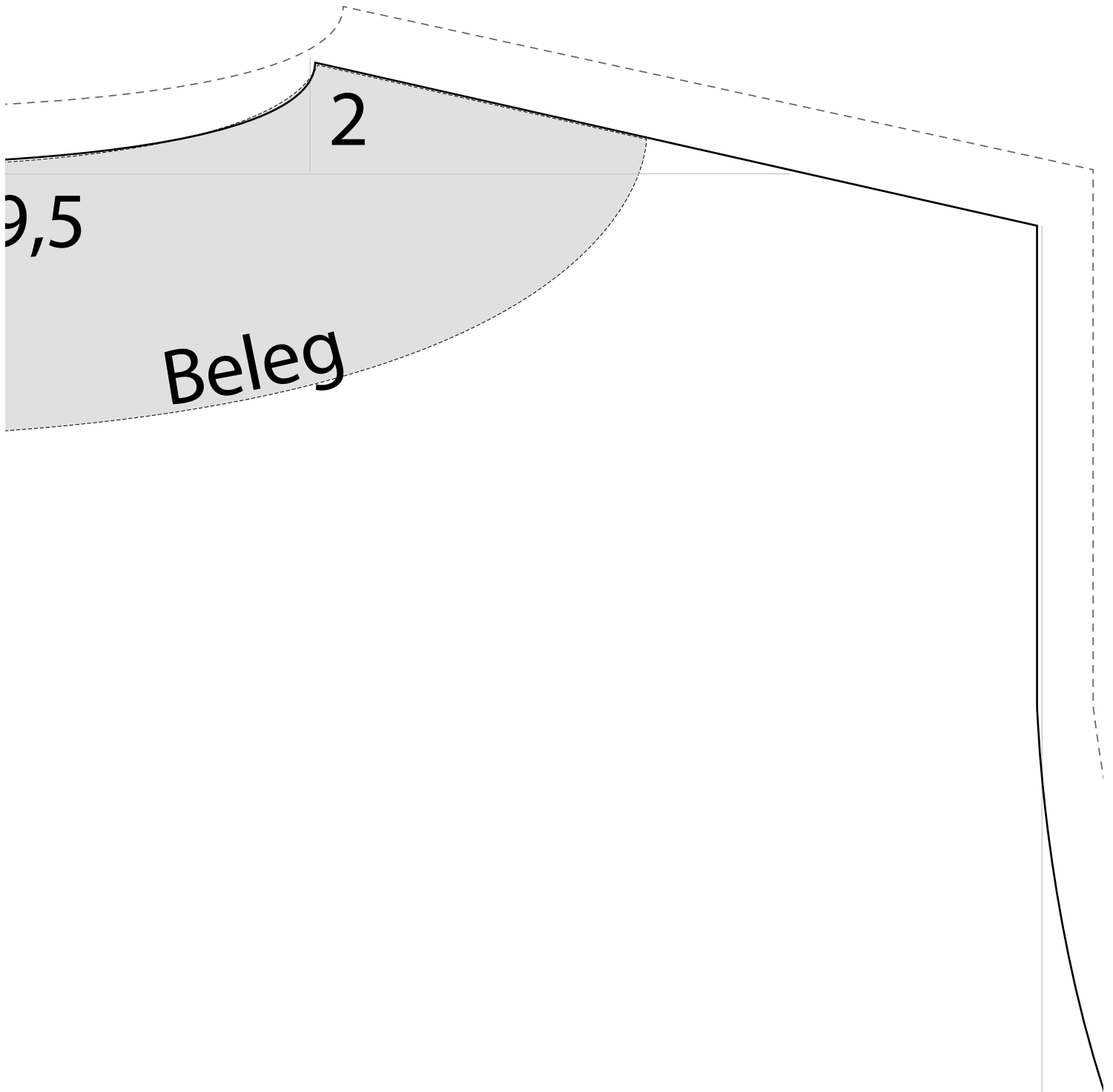


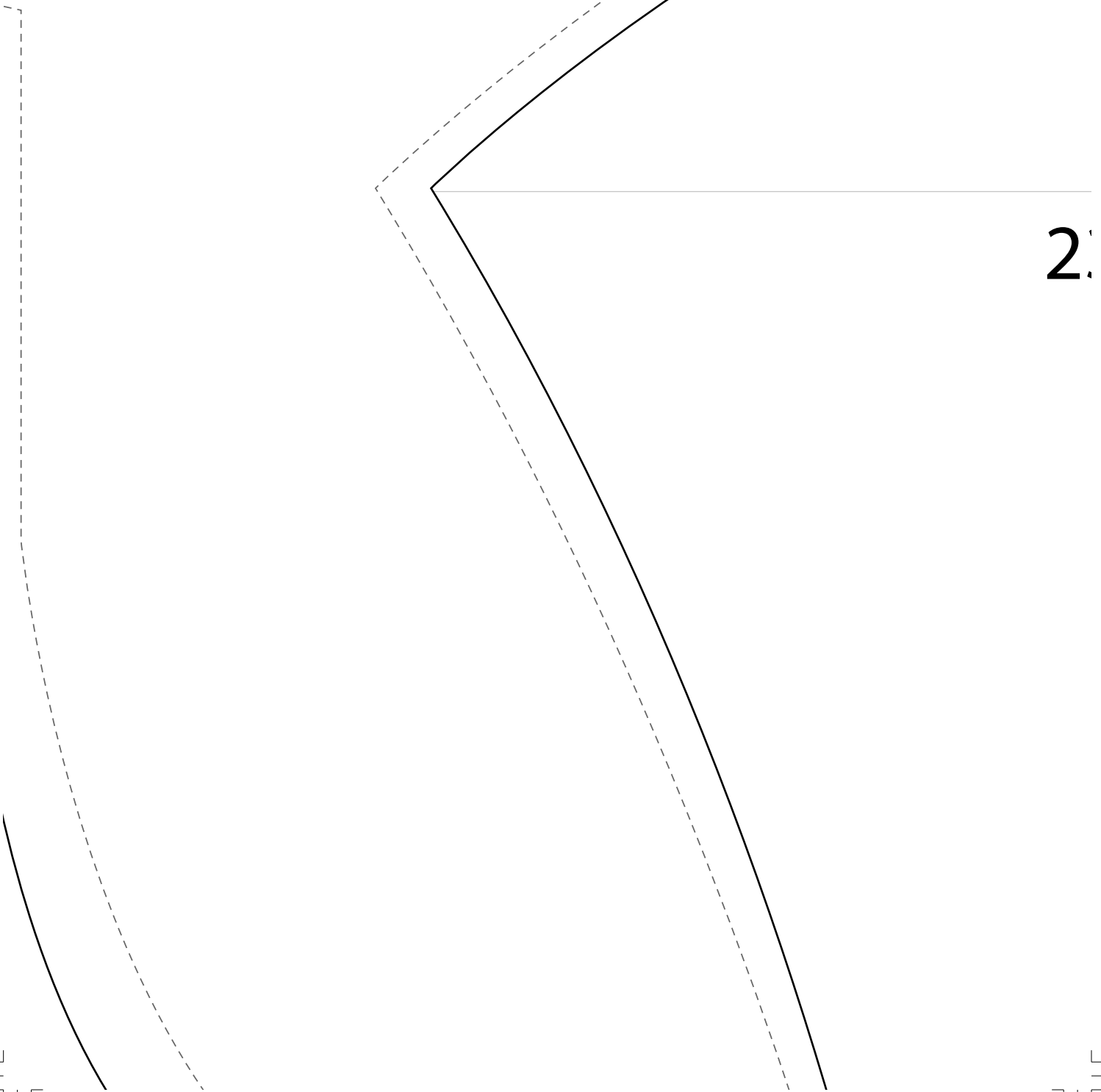


1cm

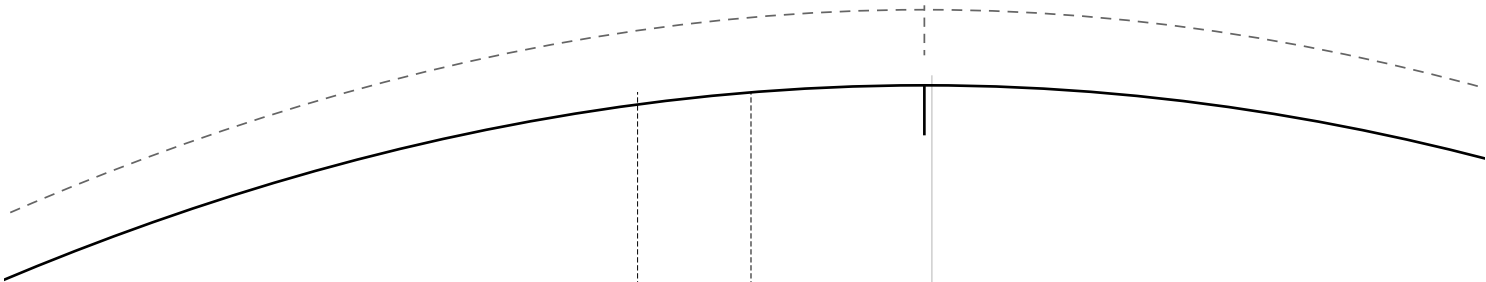








2



10

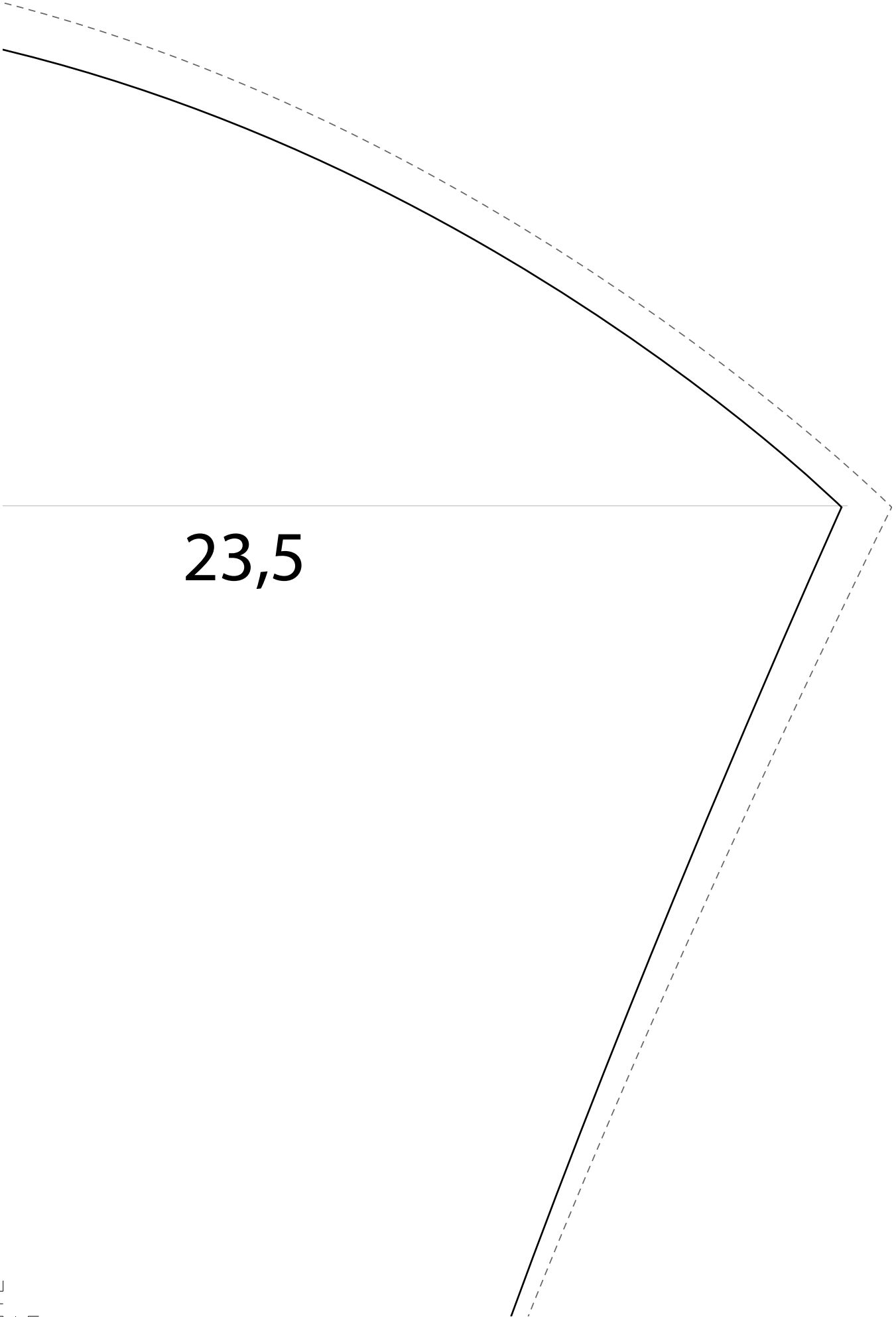
23,5

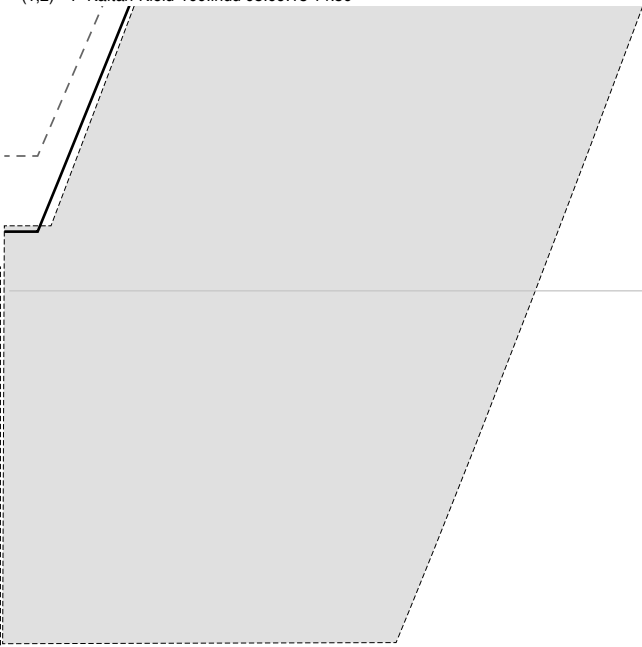
Borte

30

Fadenlauf





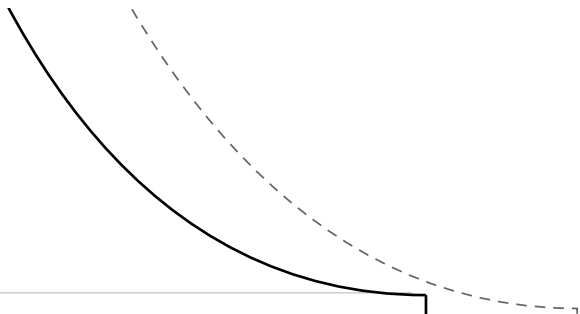


22,5

Fac

15

7,5



22,5

Fac

7,5

Ärm

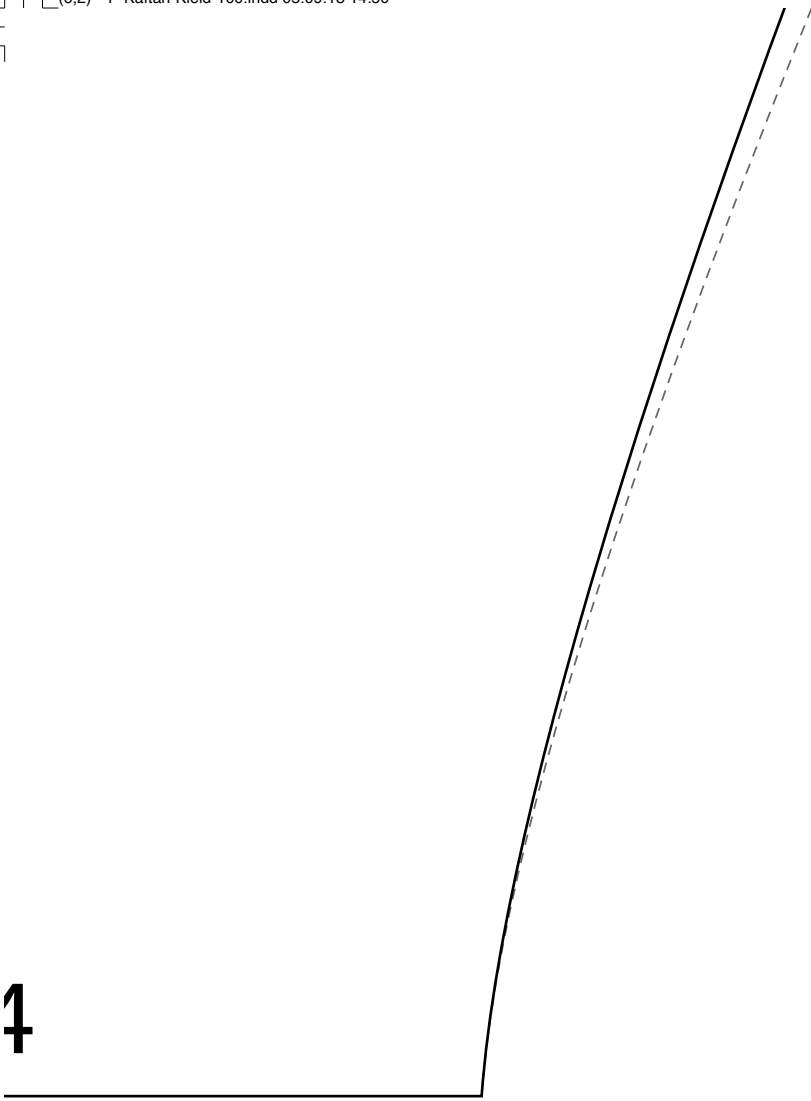




14

14

nel



4

idenlauf



stoffbruch

110

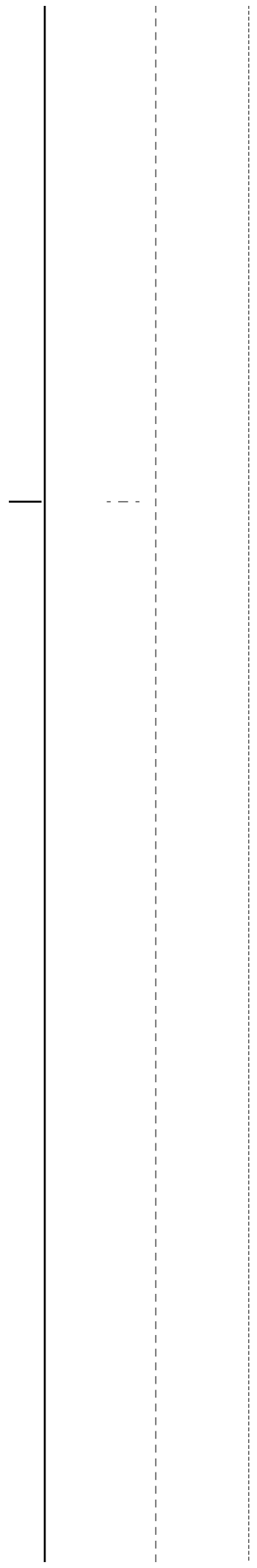
stoffbruch

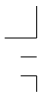
idenlauf

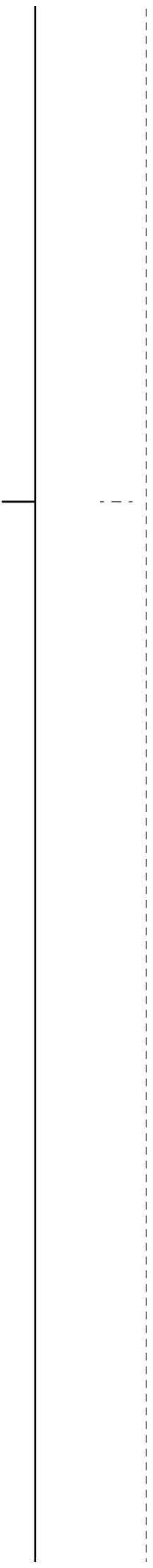


110





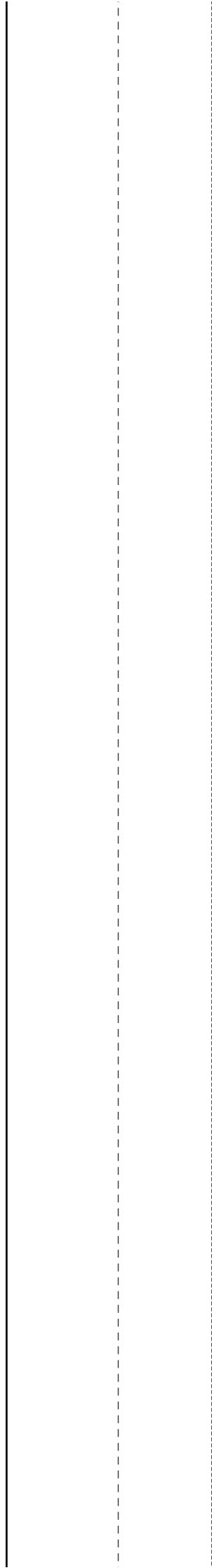






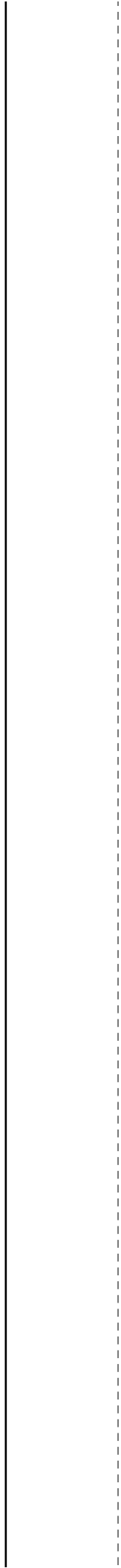


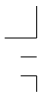
Schlitz





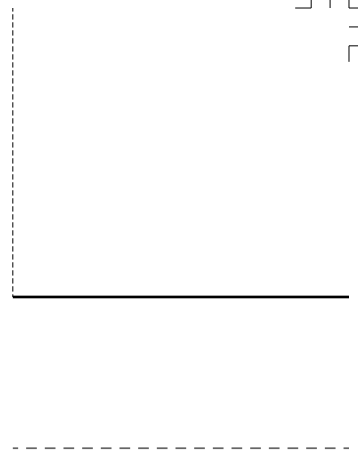
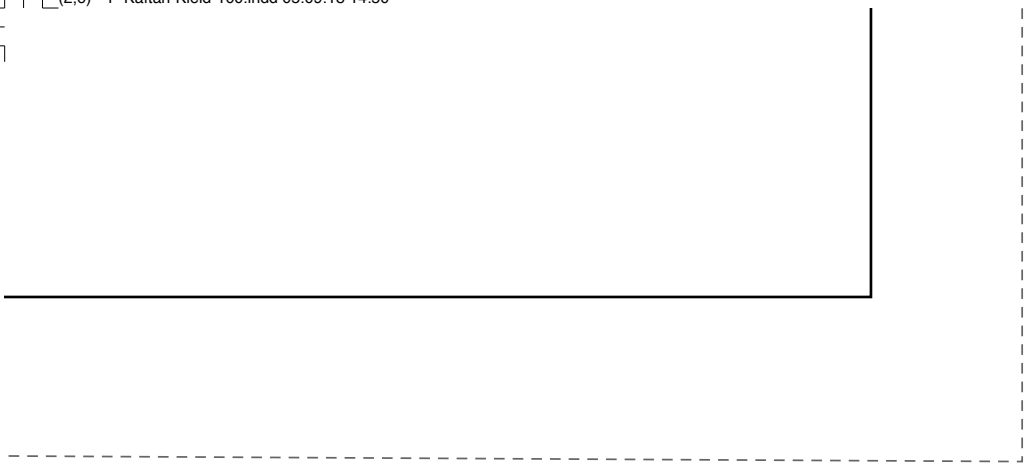
Schlitz







Vorderteil



Rücken



30

nteil

