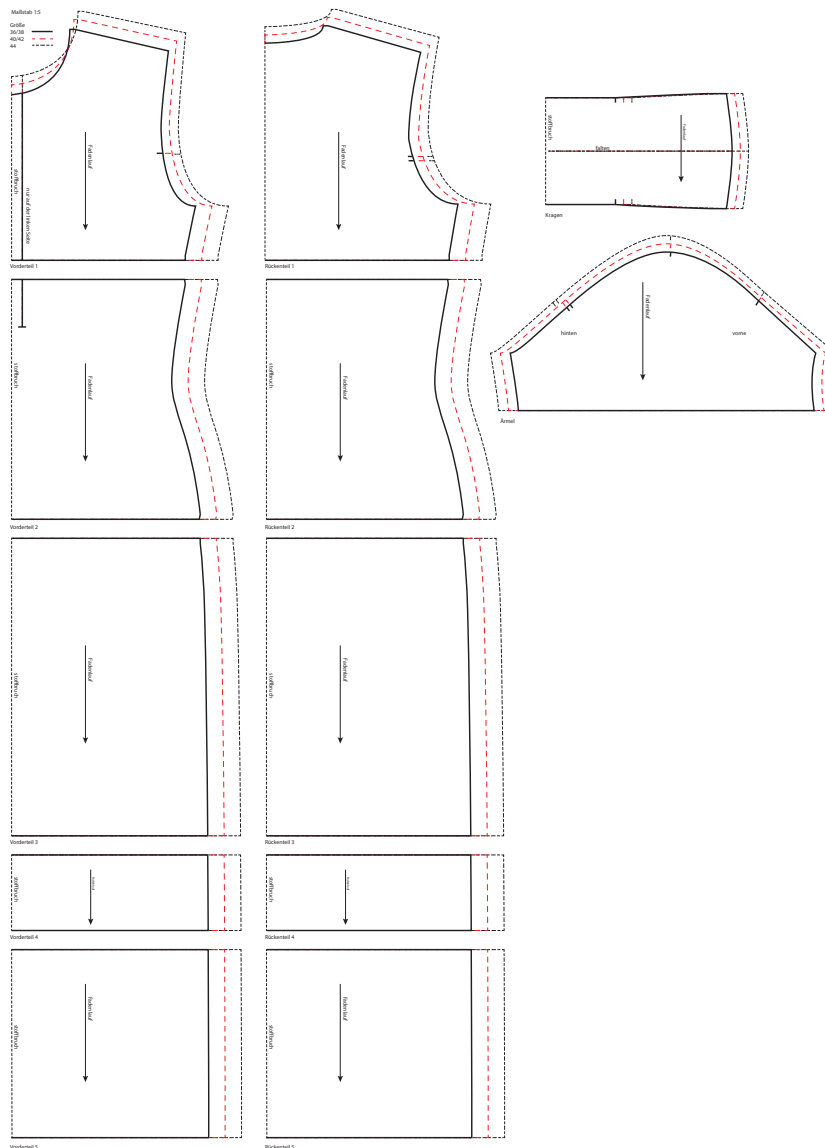
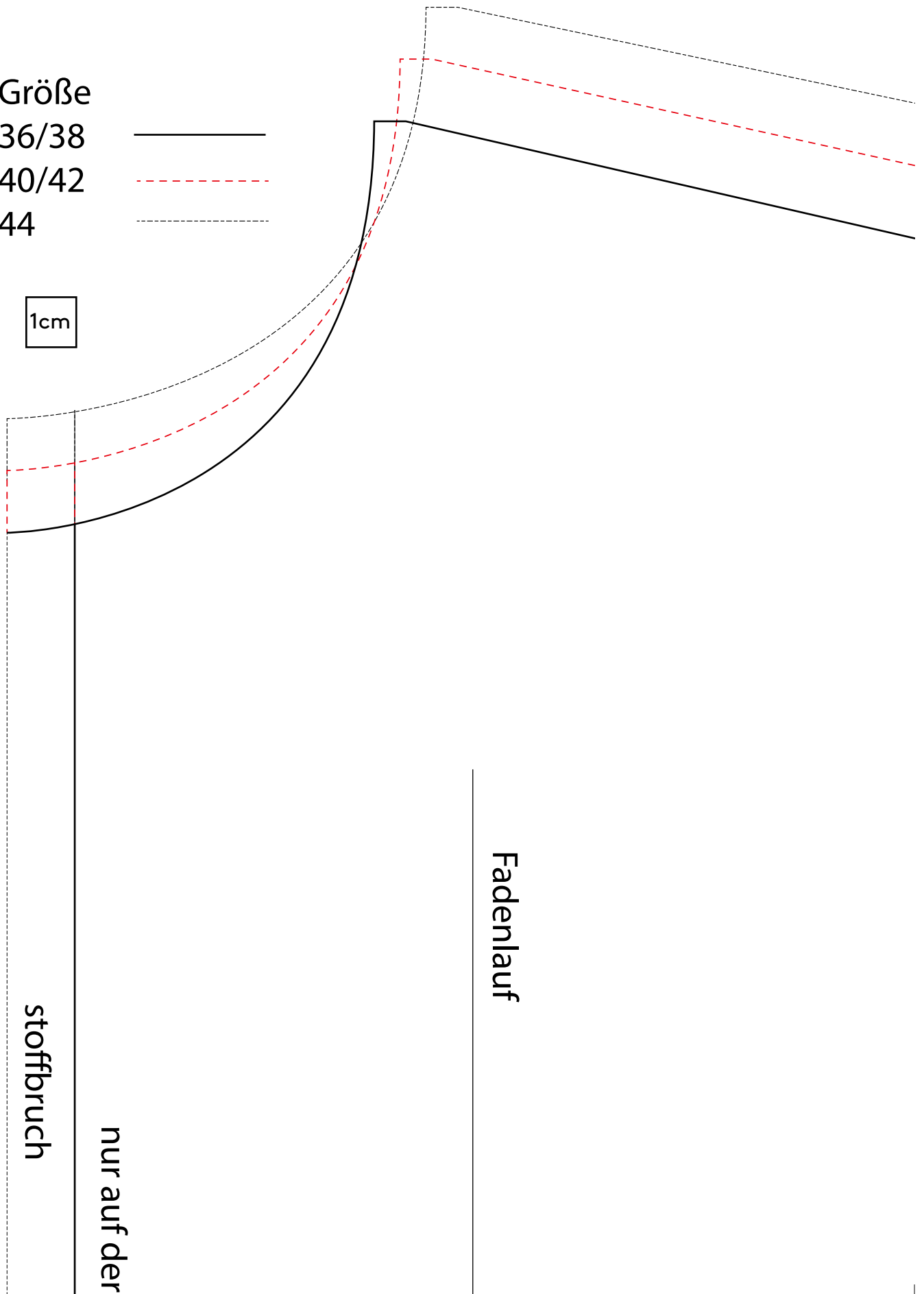


Drucken Sie die Schnittmusterseiten auf DIN A4 Papier aus. Achten Sie dabei darauf, dass das Druckergebnis in den Druckereinstellung nicht skaliert wird. Das Kontrollkästchen sollte genau 1 cm auf allen Seiten betragen.



Größe  
36/38  
40/42  
44

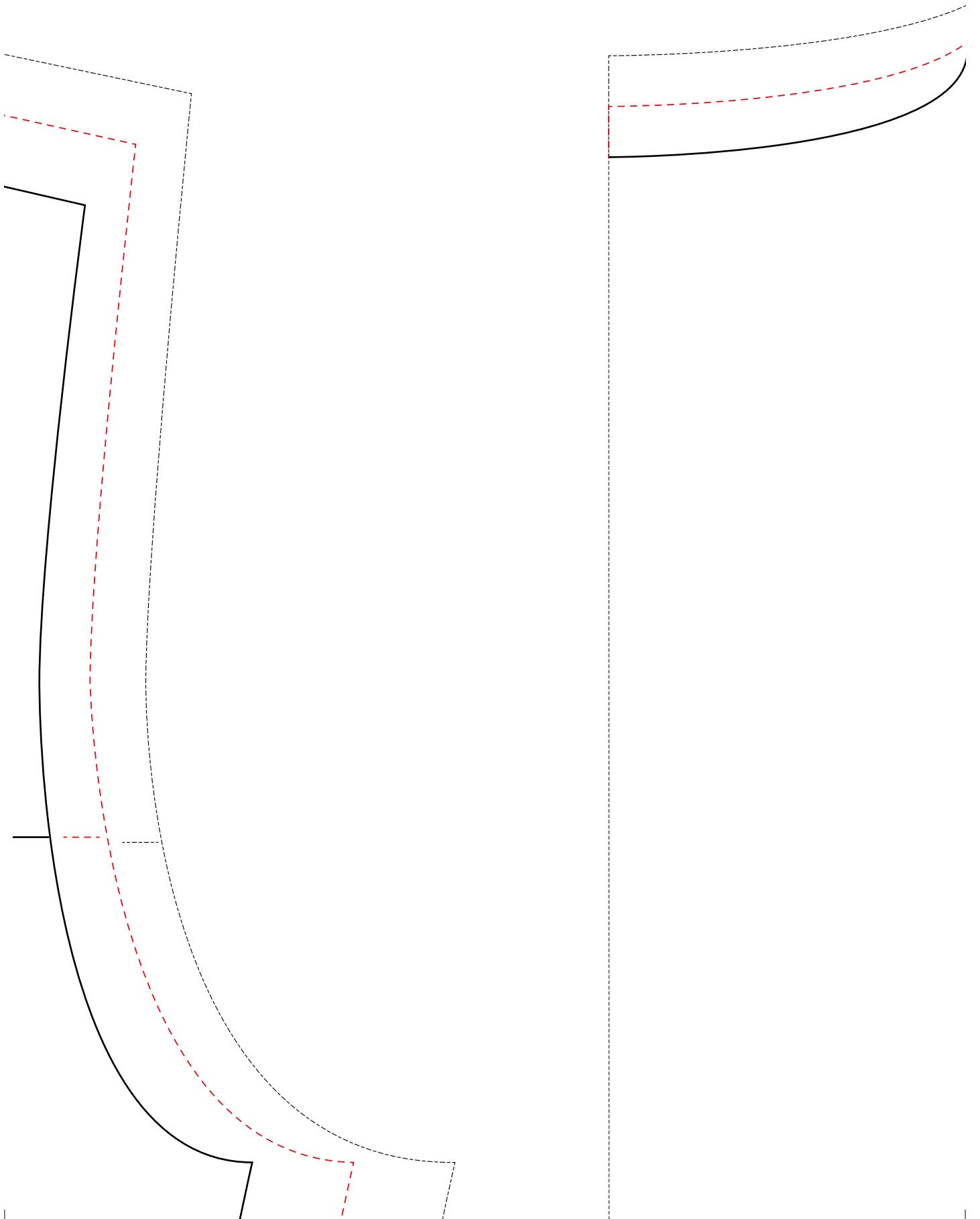
1cm

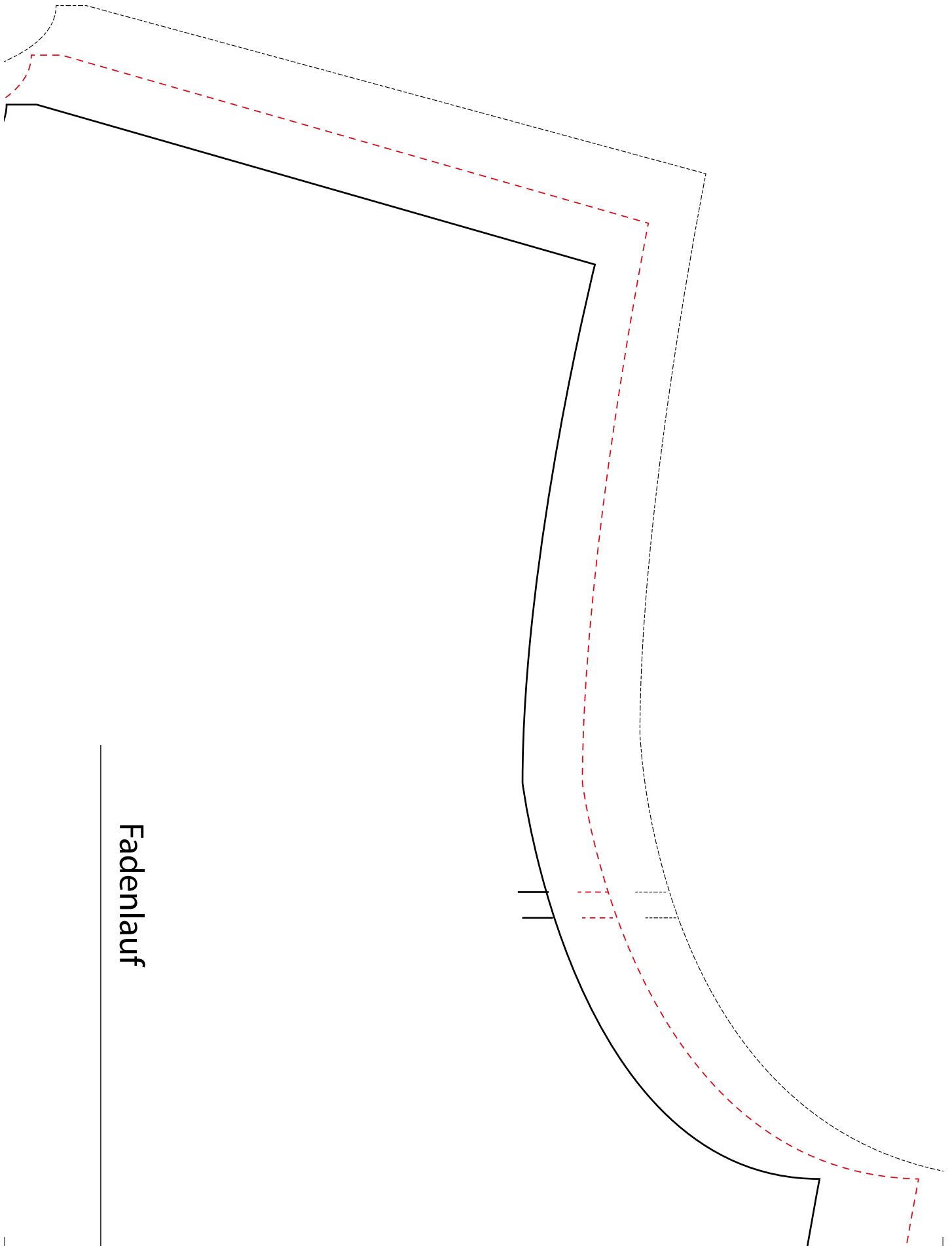


stoffbruch

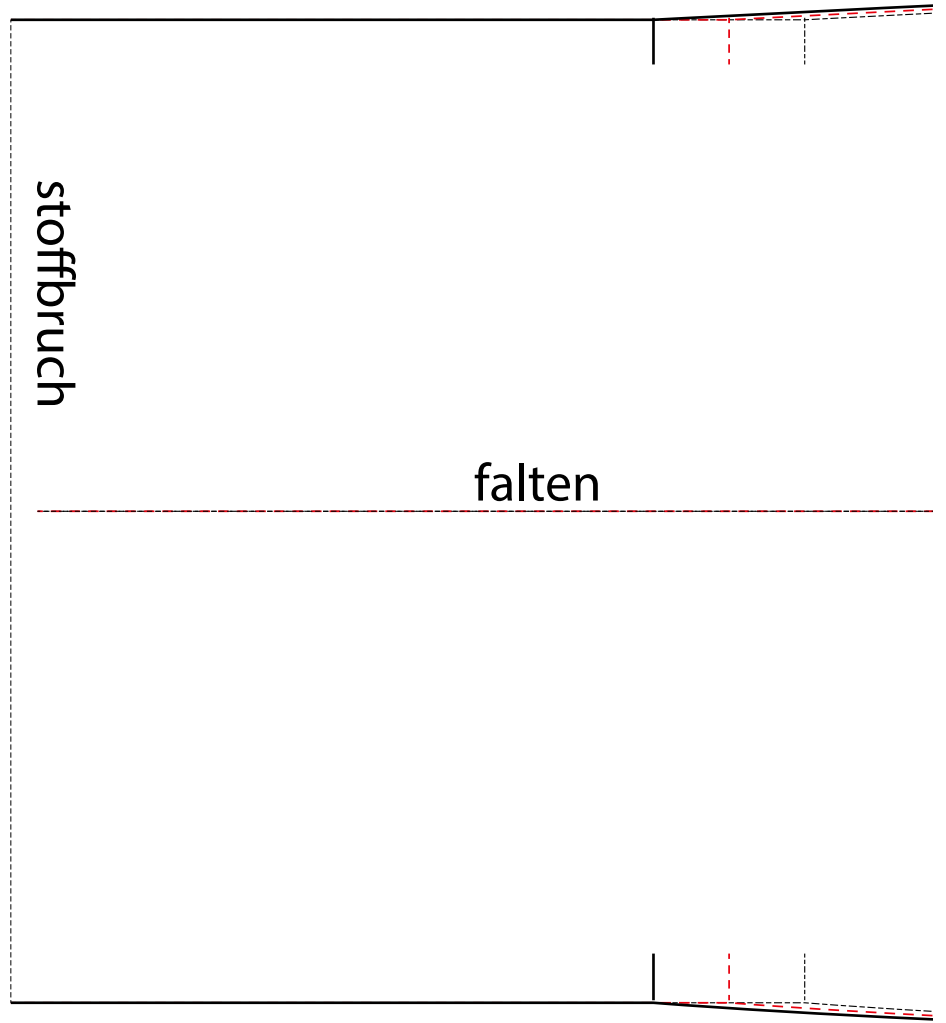
nur auf der

Fadenlauf





Fadenlauf

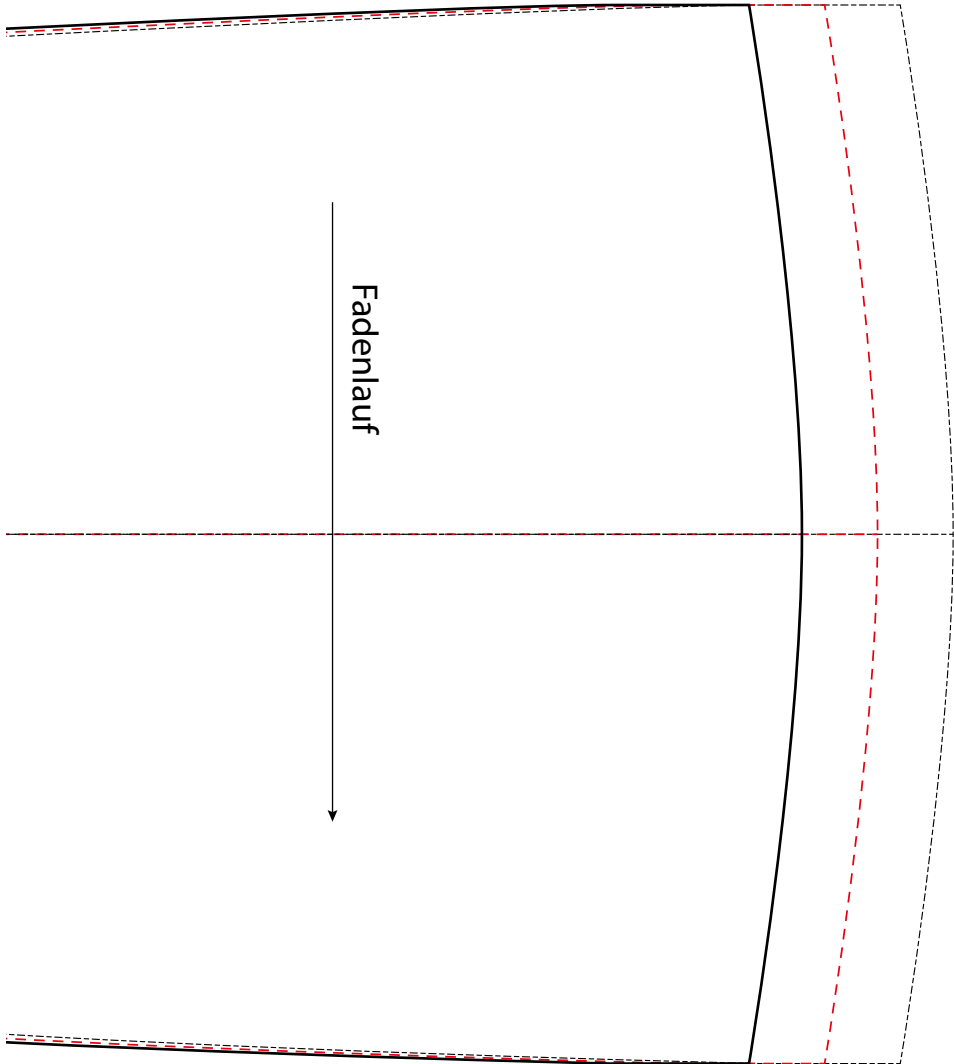


stoffbruch

falten

Kragen







linken Seite

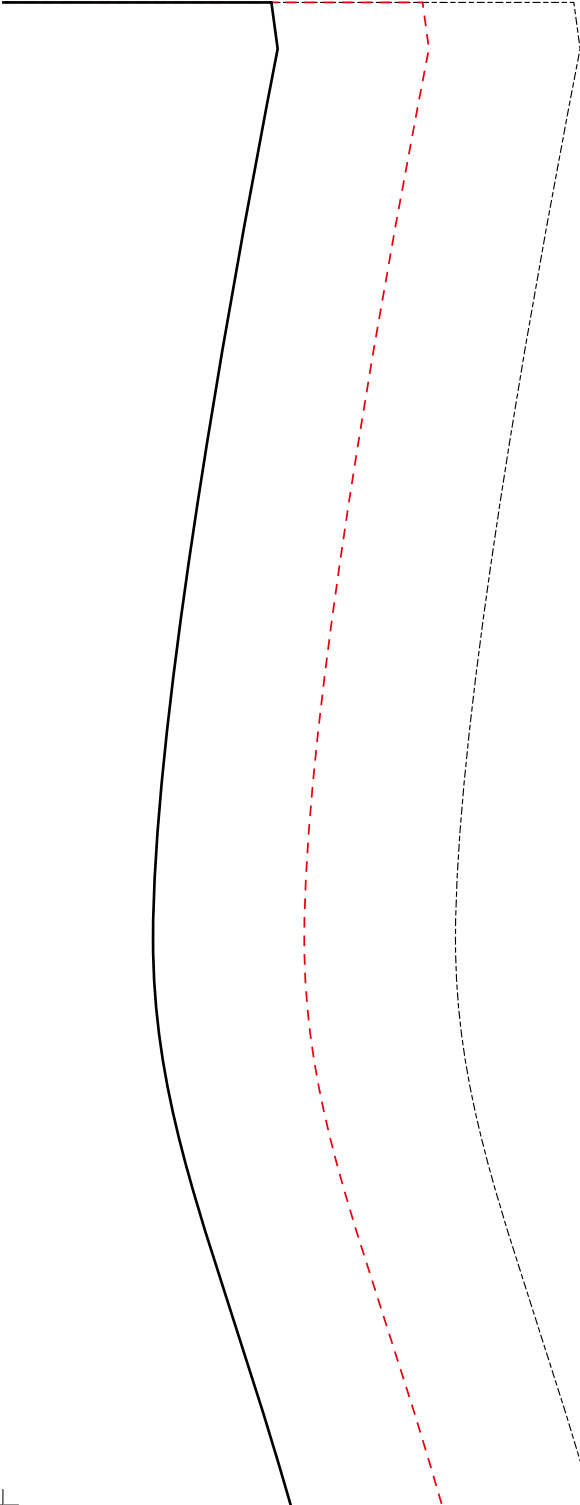
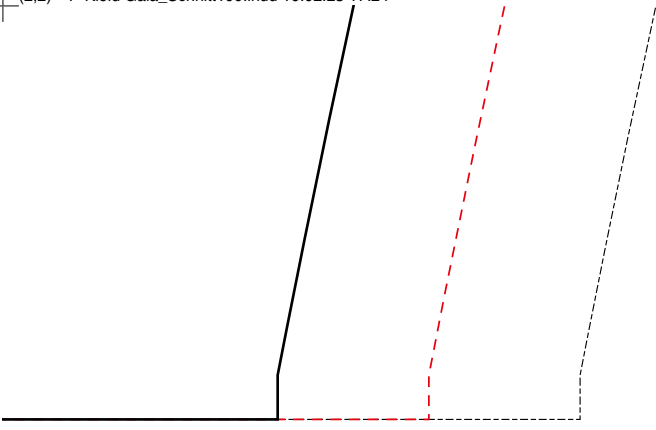


## Vorderteil 1

stoffbruch

Fadenlauf



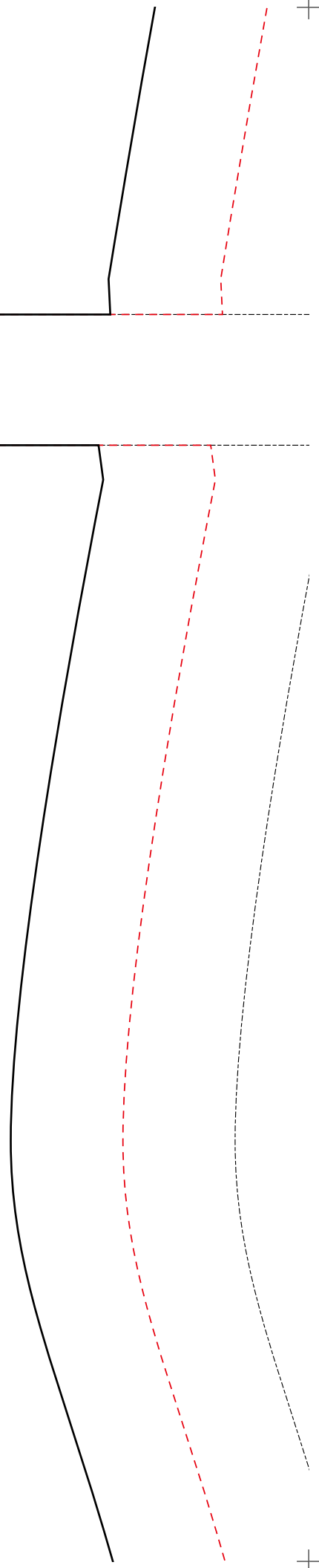


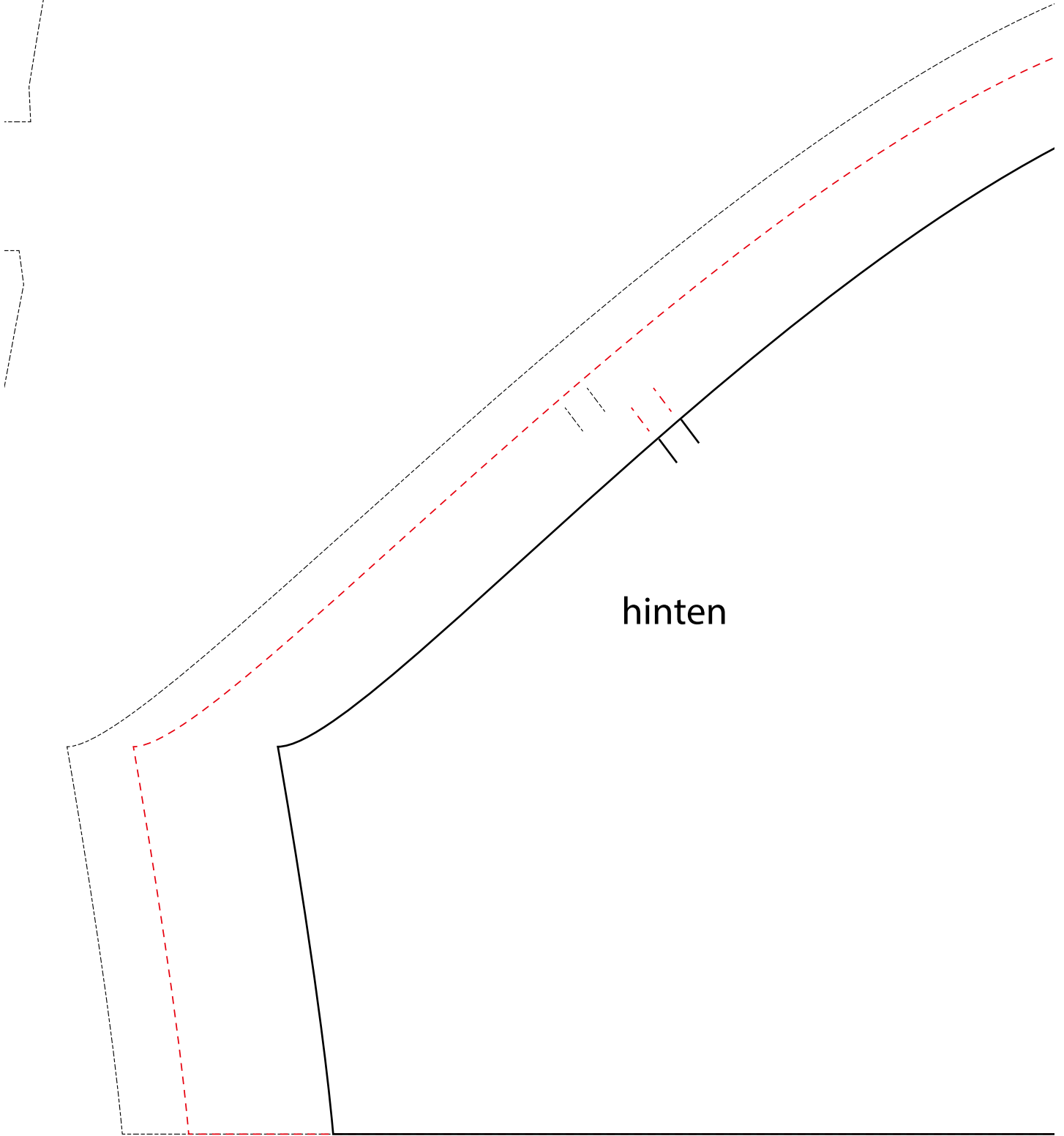
Rückenteil 1

stoffbruch



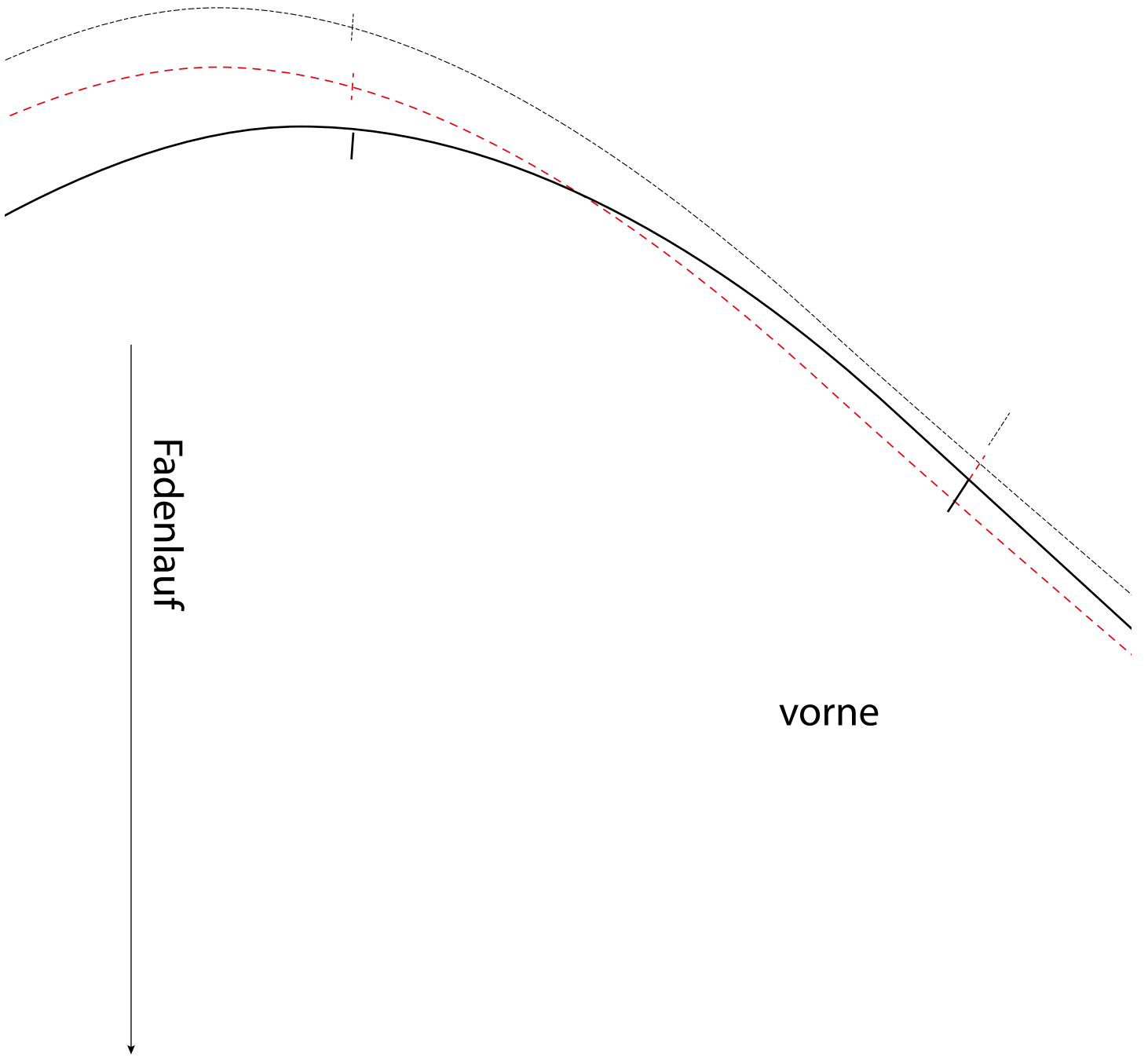
Fadenlauf





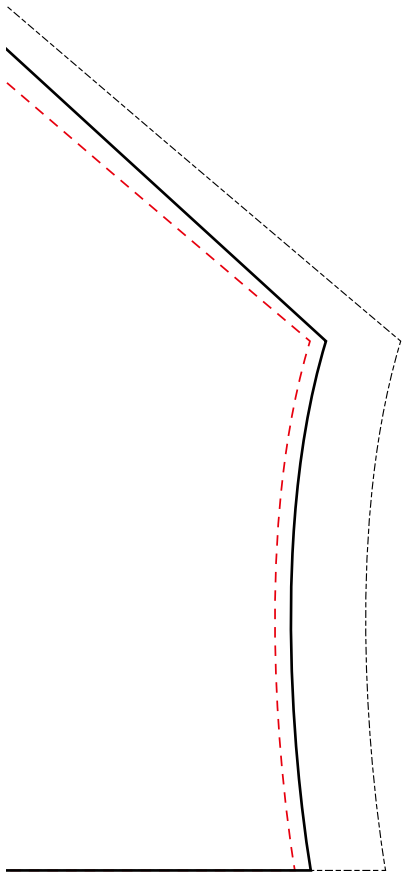
hinten

Ärmel



Fadenlauf

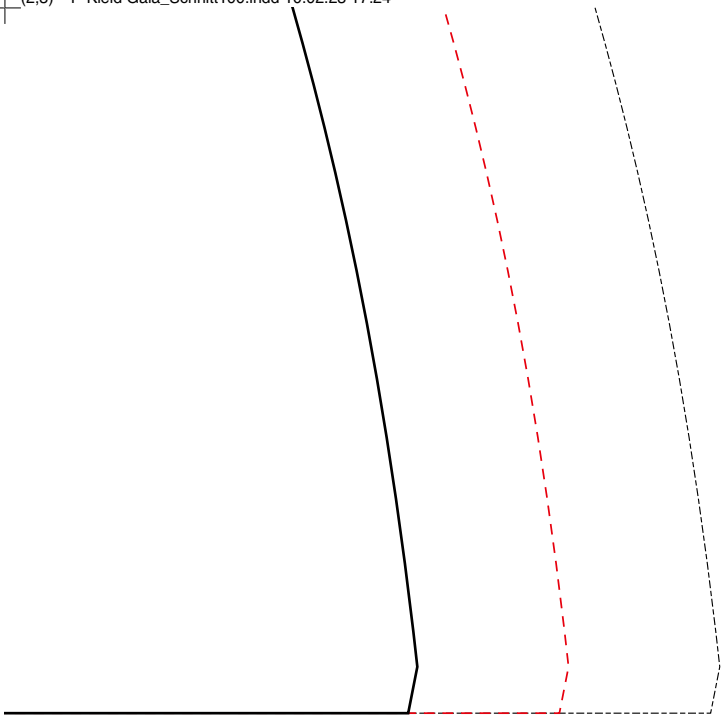
vorne



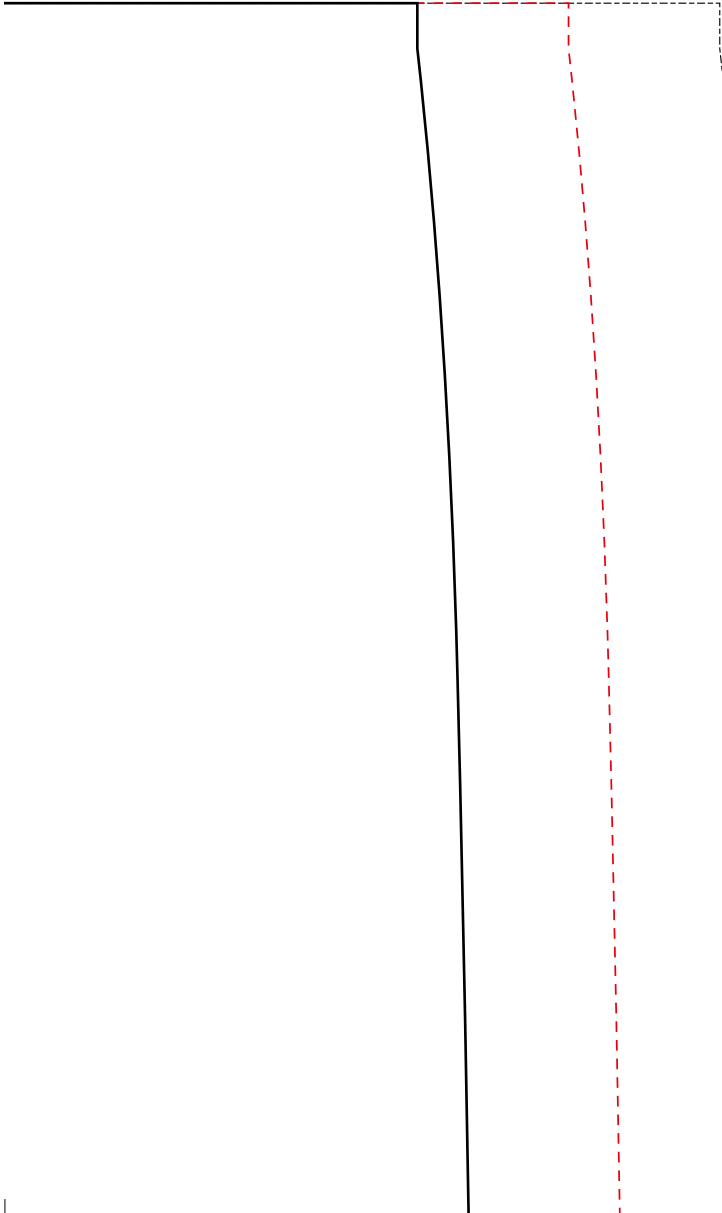


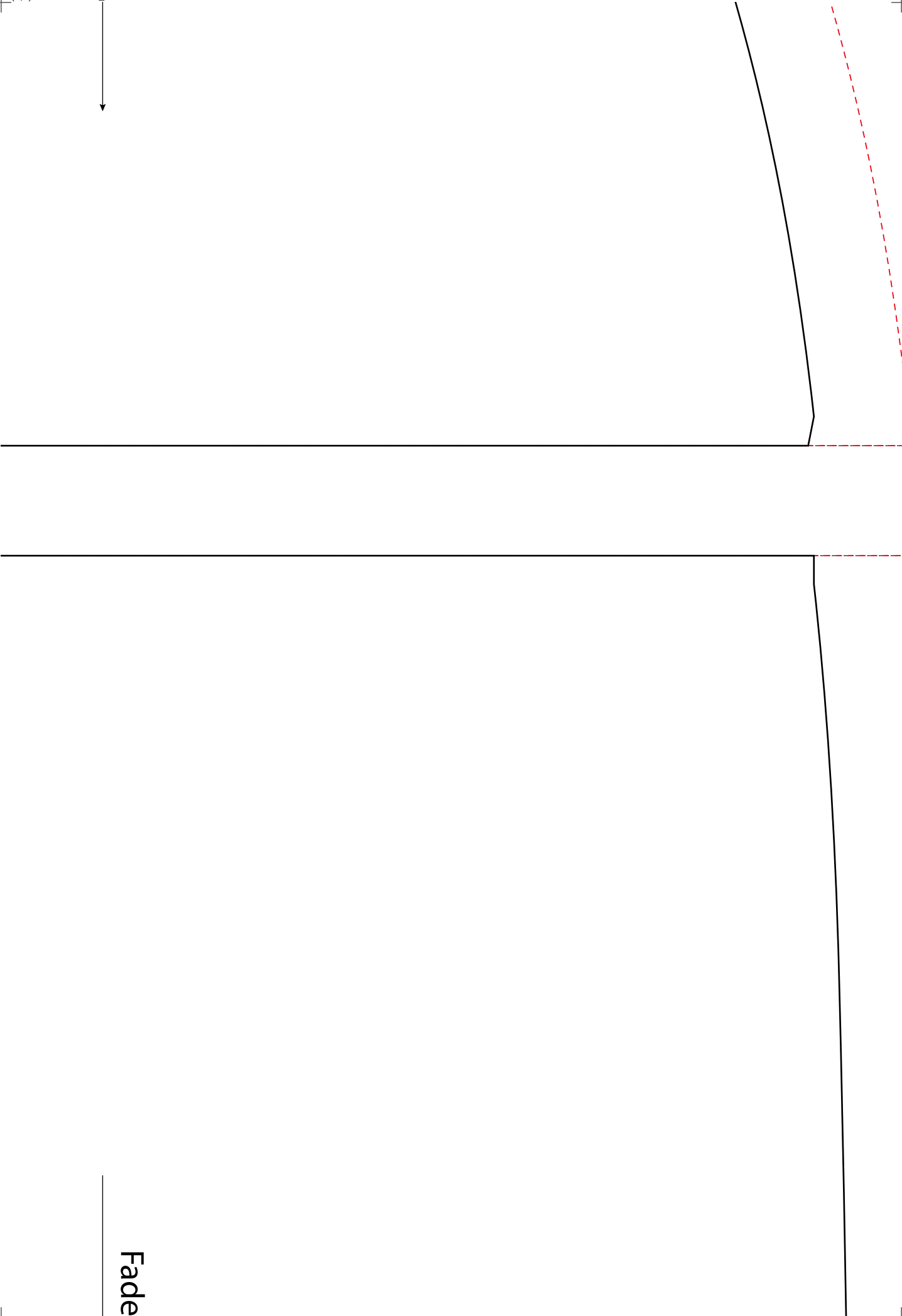
## Vorderteil 2

Fade



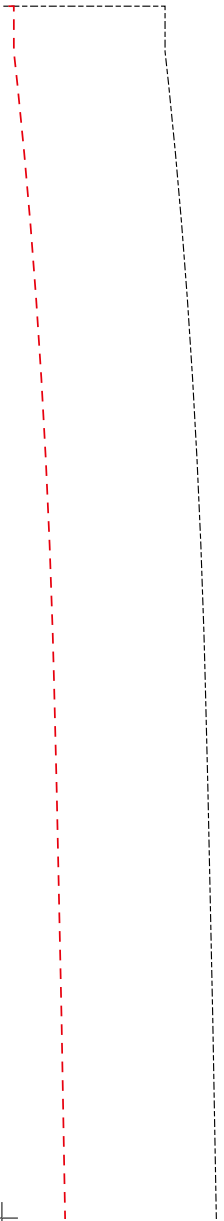
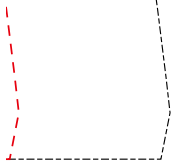
## Rückenteil 2





Fade









stoffbruch

nlauf



### Vorderteil 3

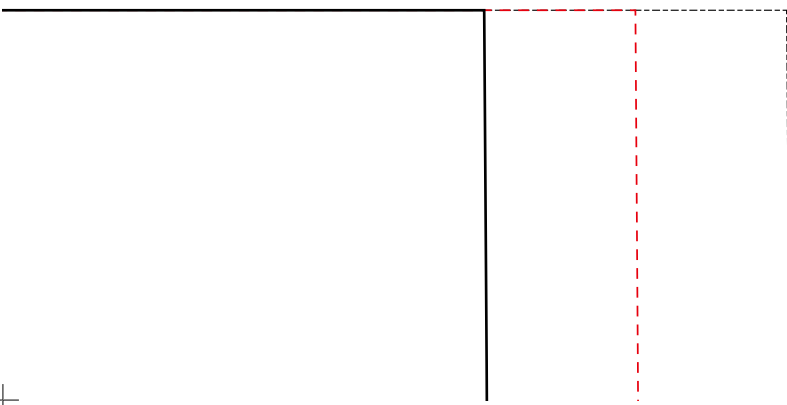
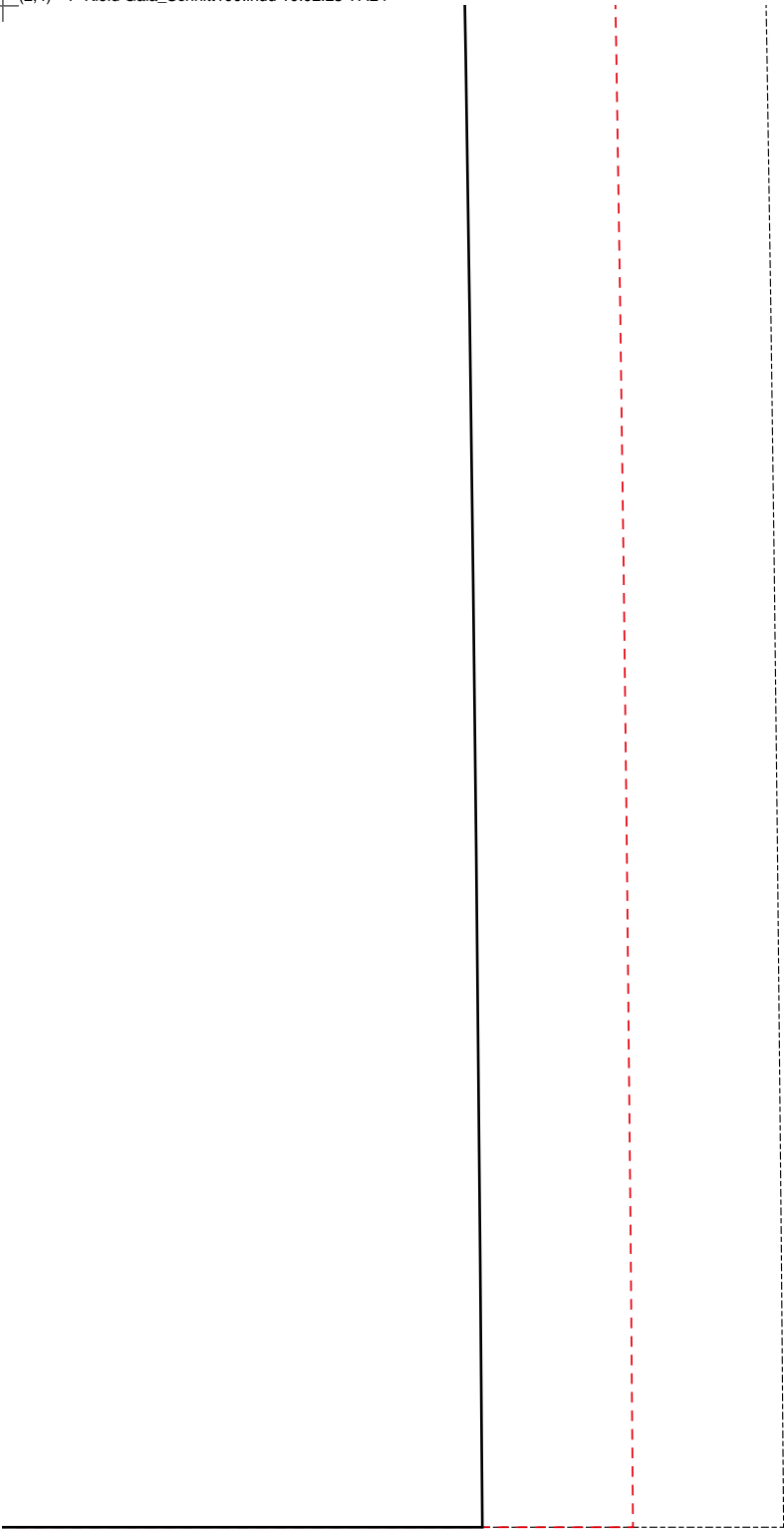
stoffbruc

Fadenlauf

stoffbruch

Rückenteil 3

stoffbruc

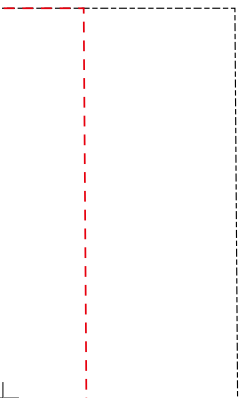
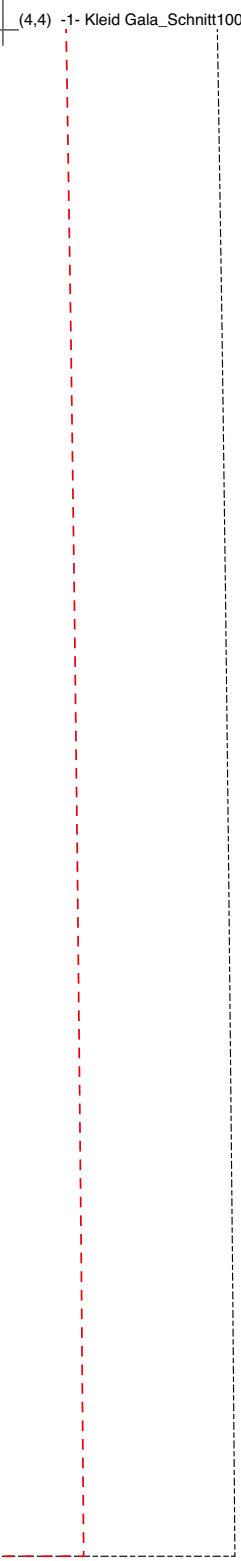


nlauf



Fadenlauf











eh

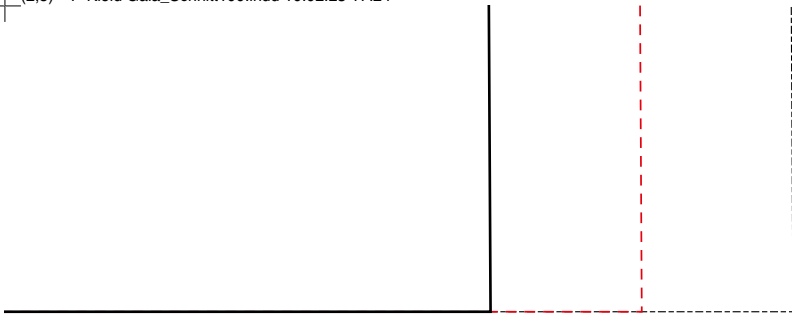


## Vorderteil 4

stoffbruch

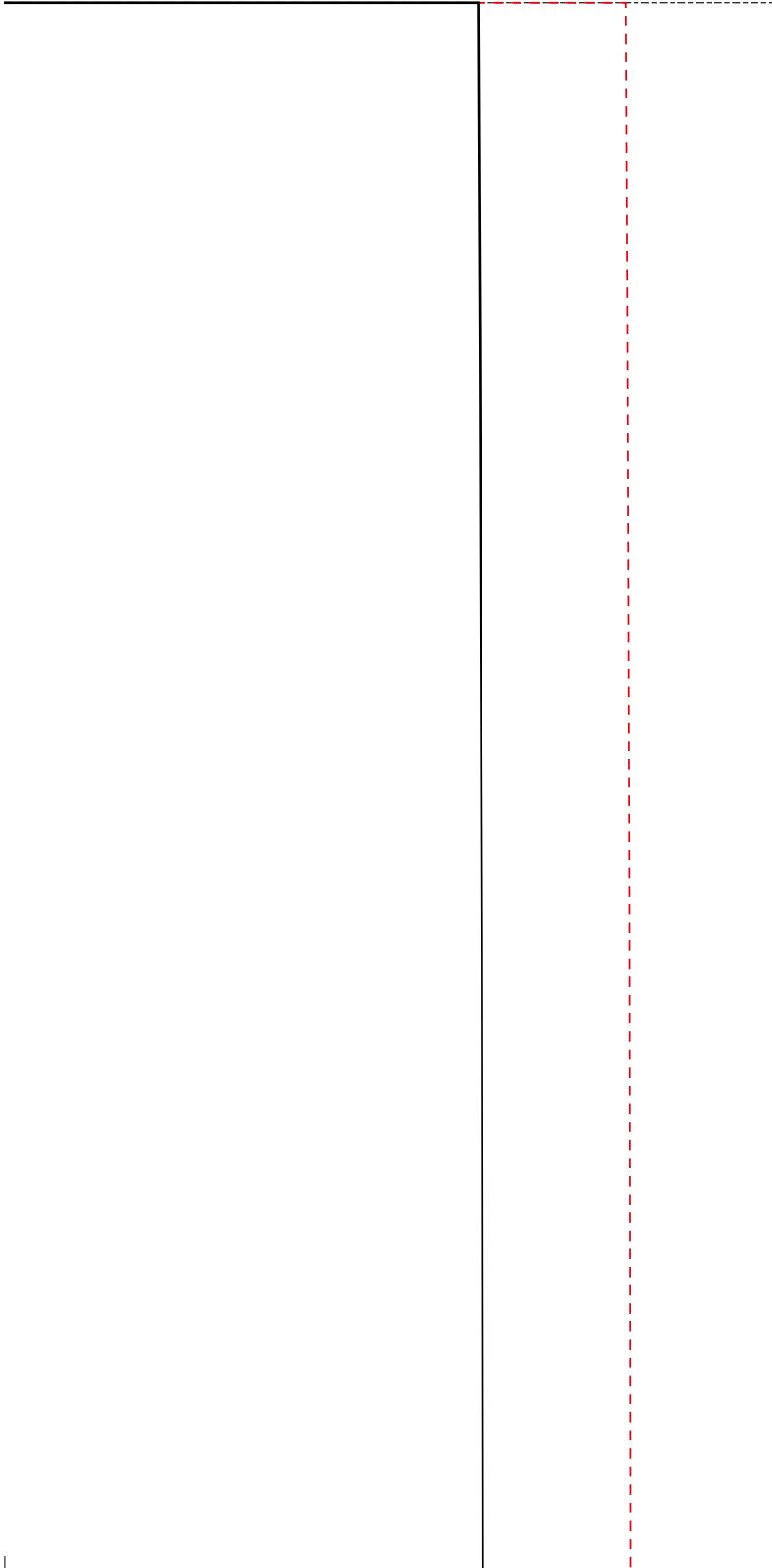
Fadenlauf





fh

## Rückenteil 4

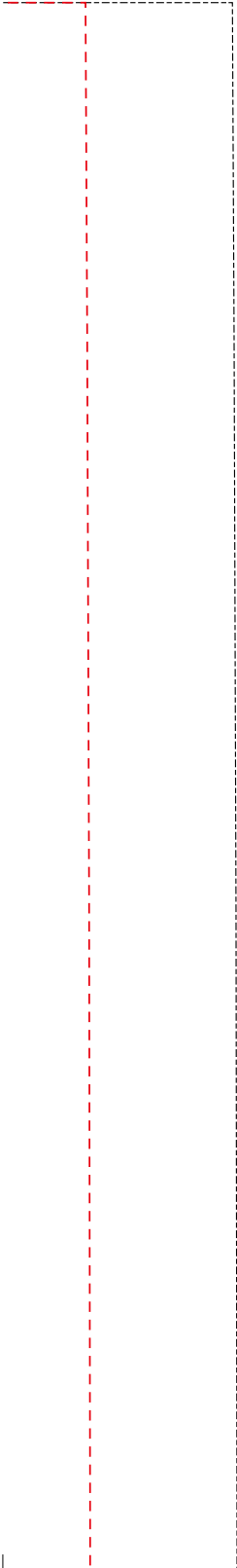


stoffbruch



Fadenlauf



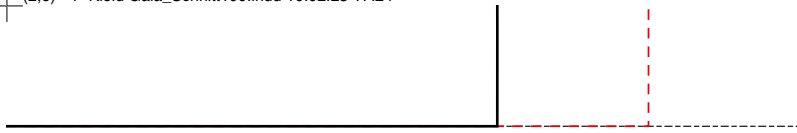






# Vorderteil 5





## Rückenteil 5



