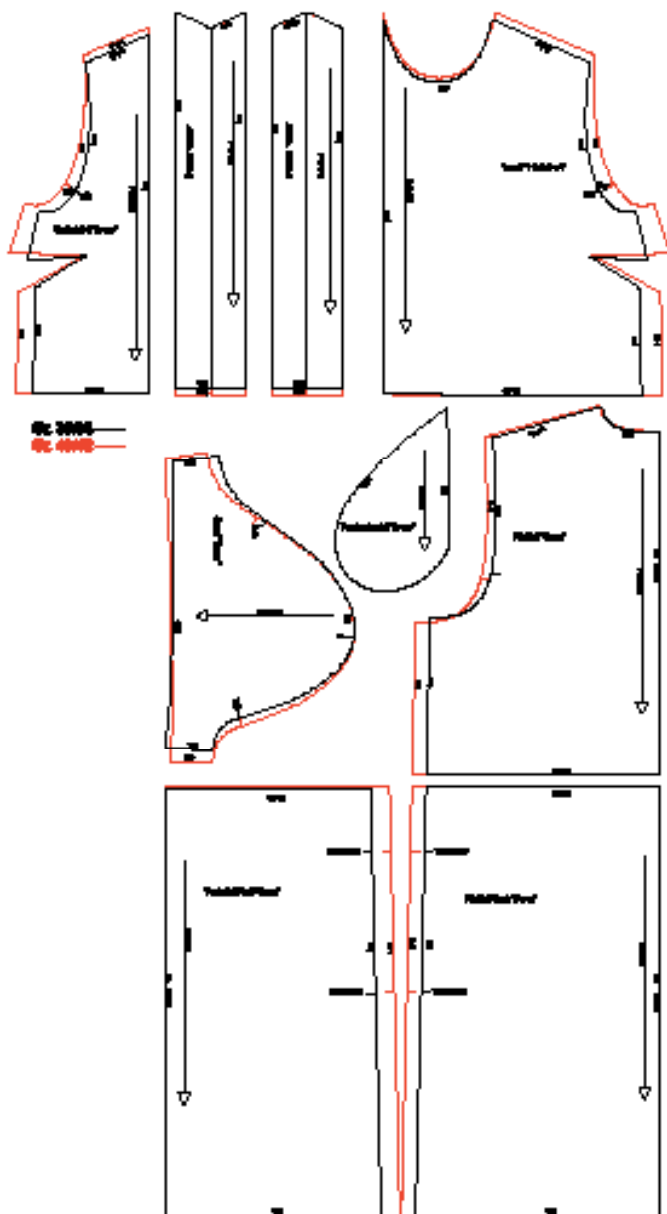


# Kleid in Streifenoptik

## Kollektion N°9

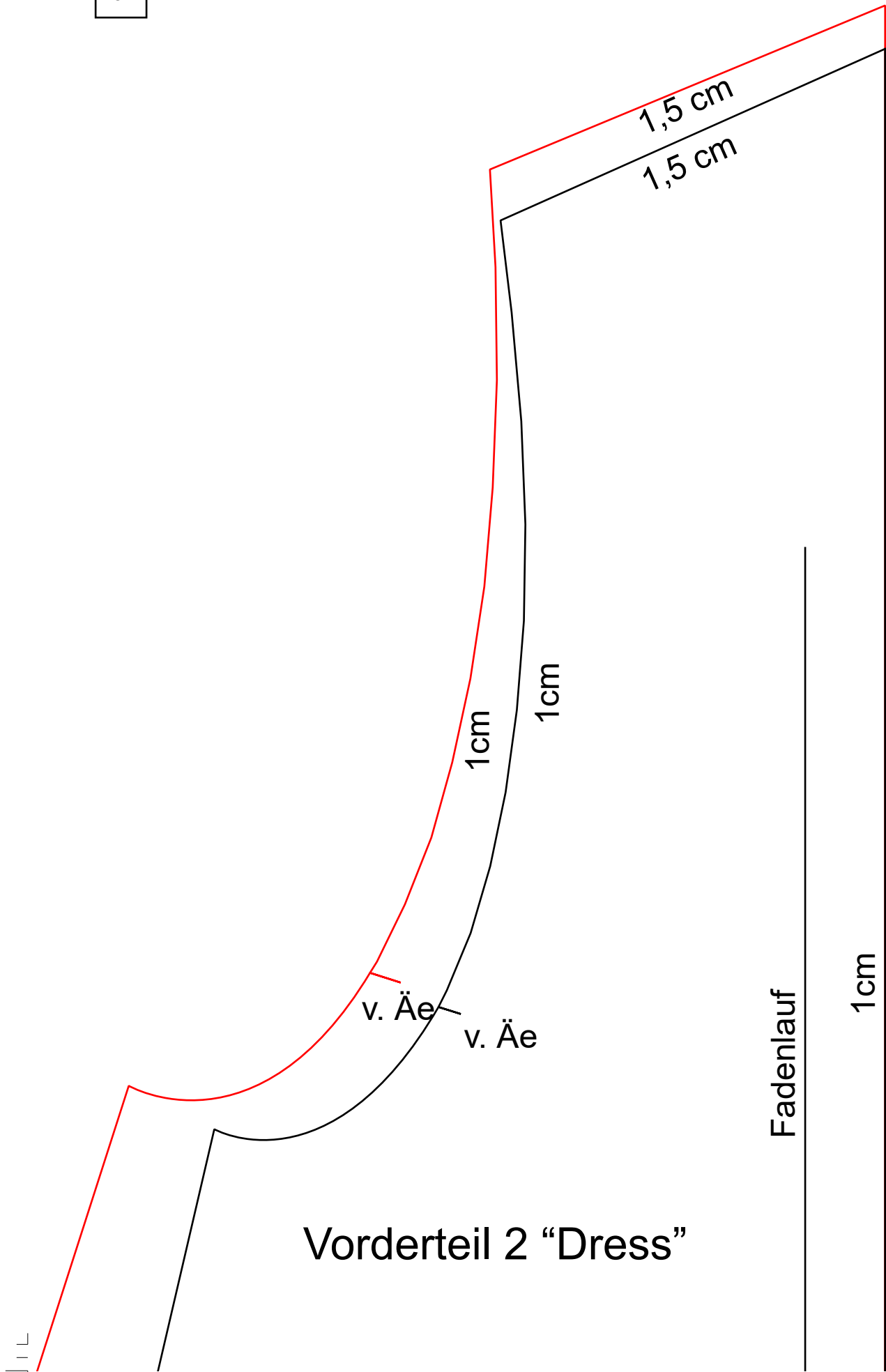
Größe 36/38 und 40/42

Drucken Sie die Schnittmusterseiten auf DIN A4 Papier aus. Achten Sie dabei darauf, dass das Druckergebnis in den Druckereinstellung nicht skaliert wird. Das Kontrollkästchen sollte genau 1 cm auf allen Seiten betragen.

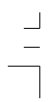


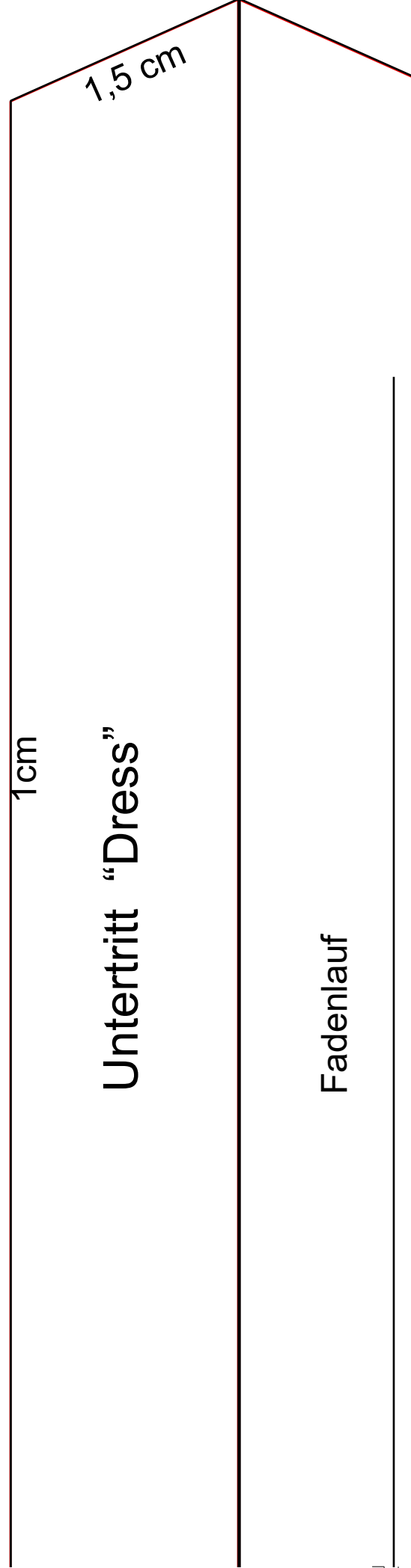
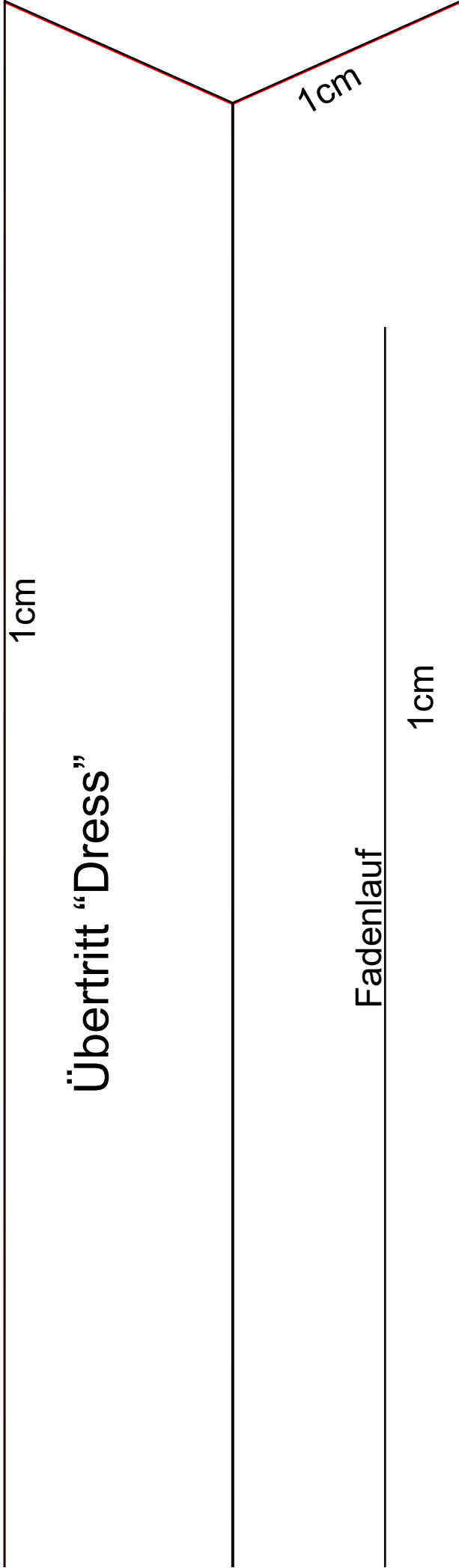


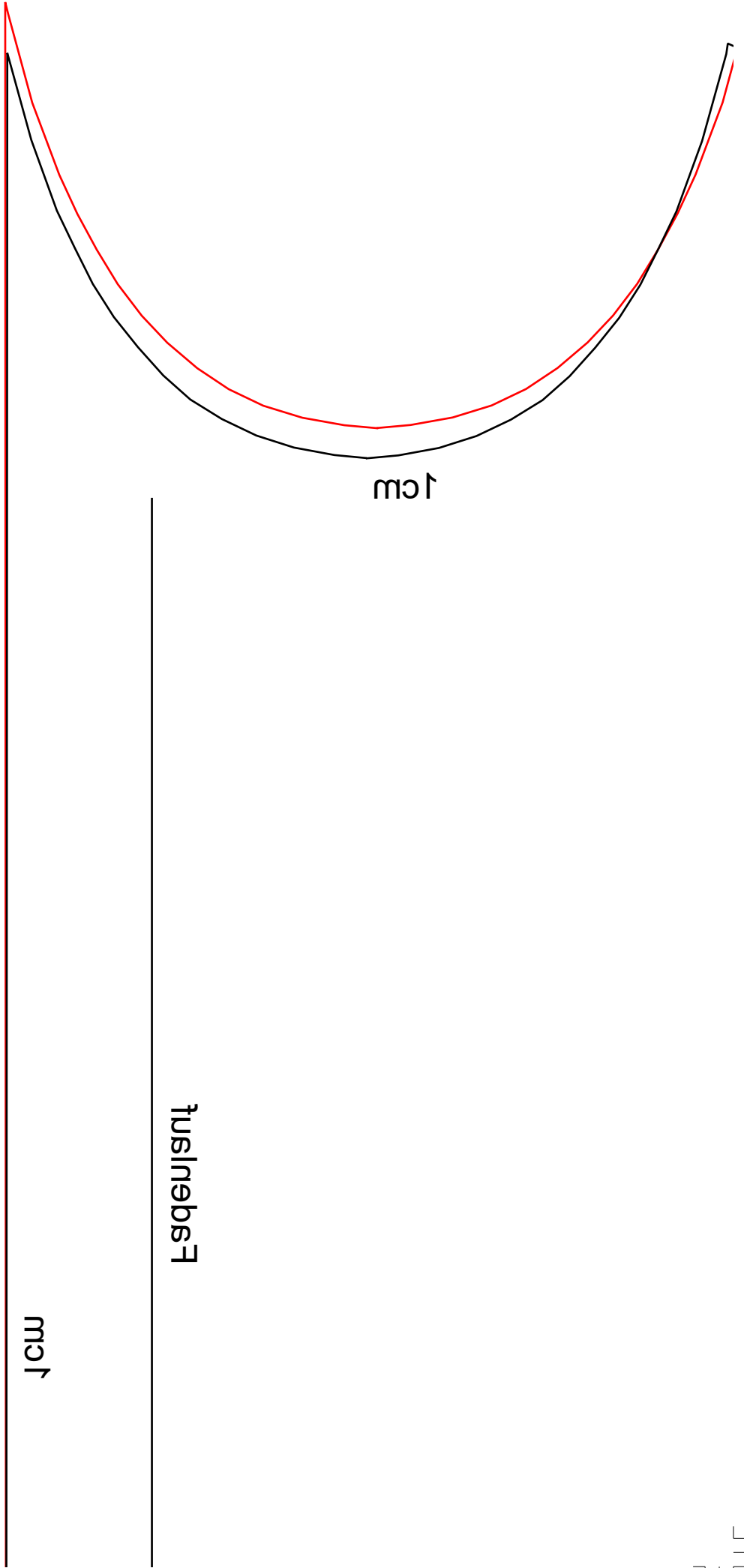
1cm

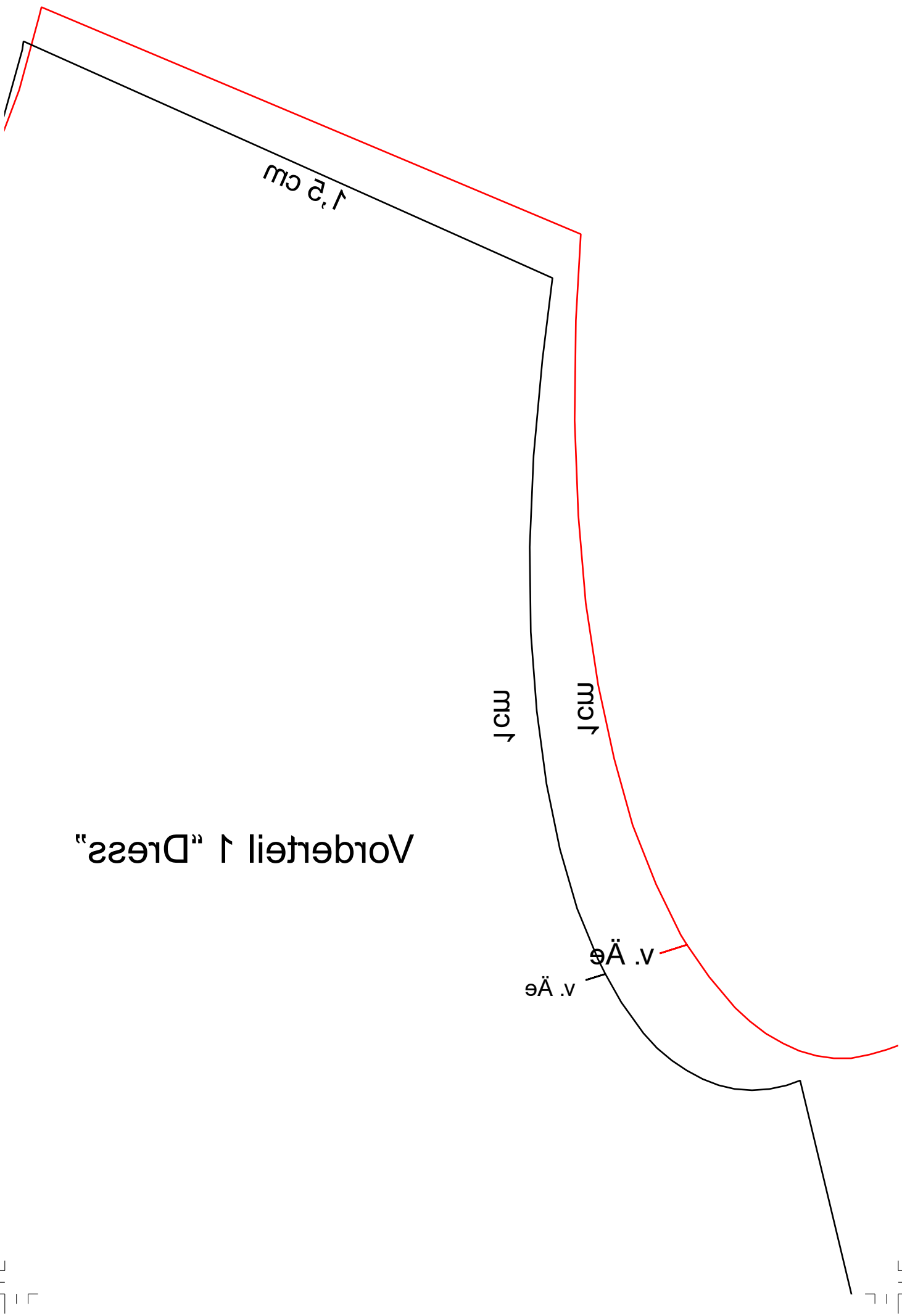


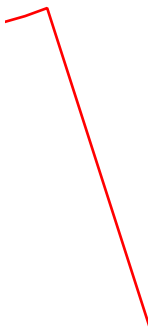
Vorderteil 2 "Dress"

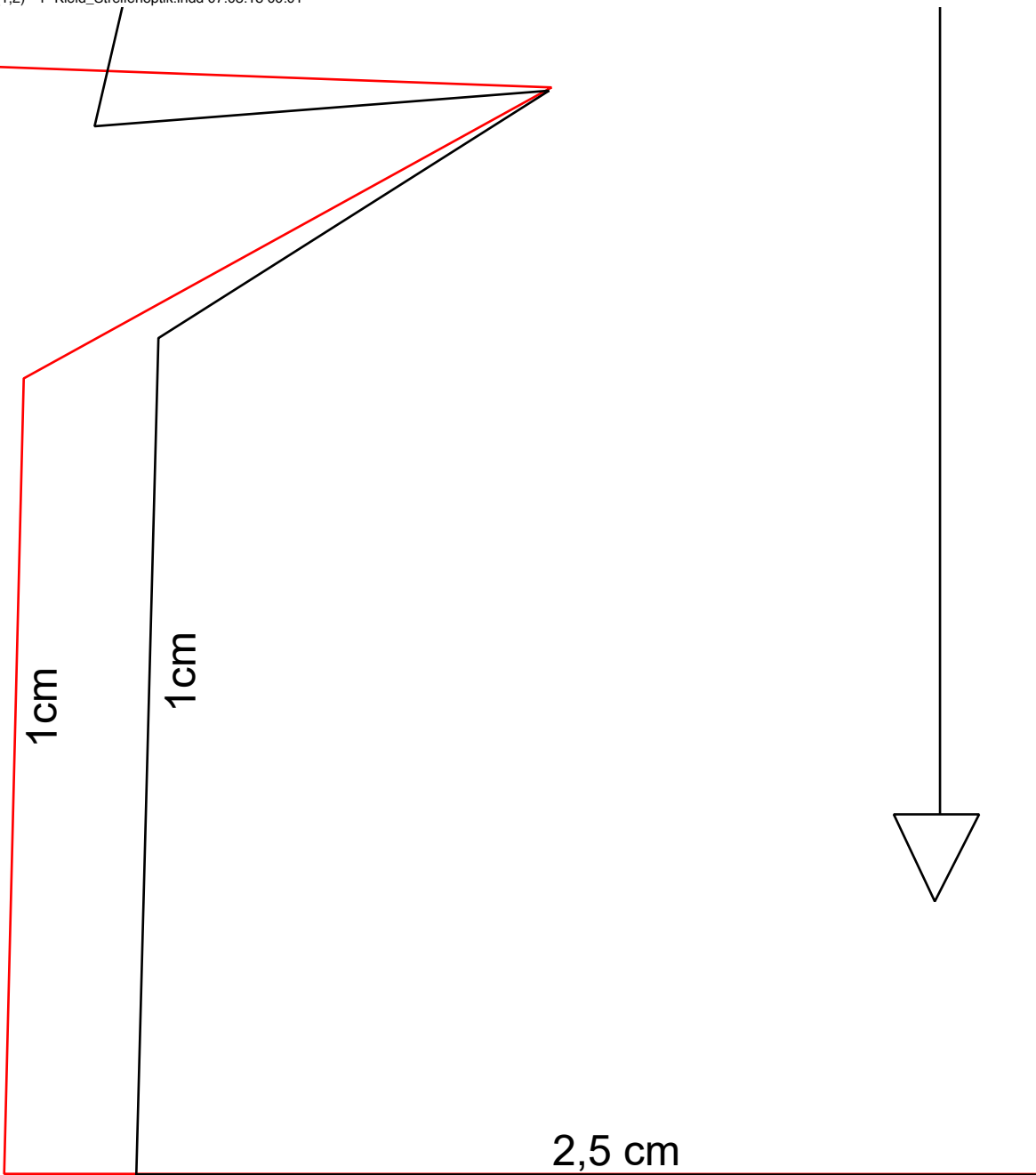






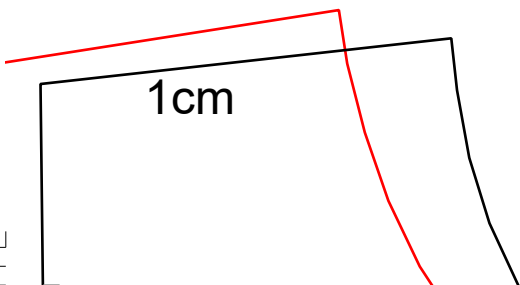
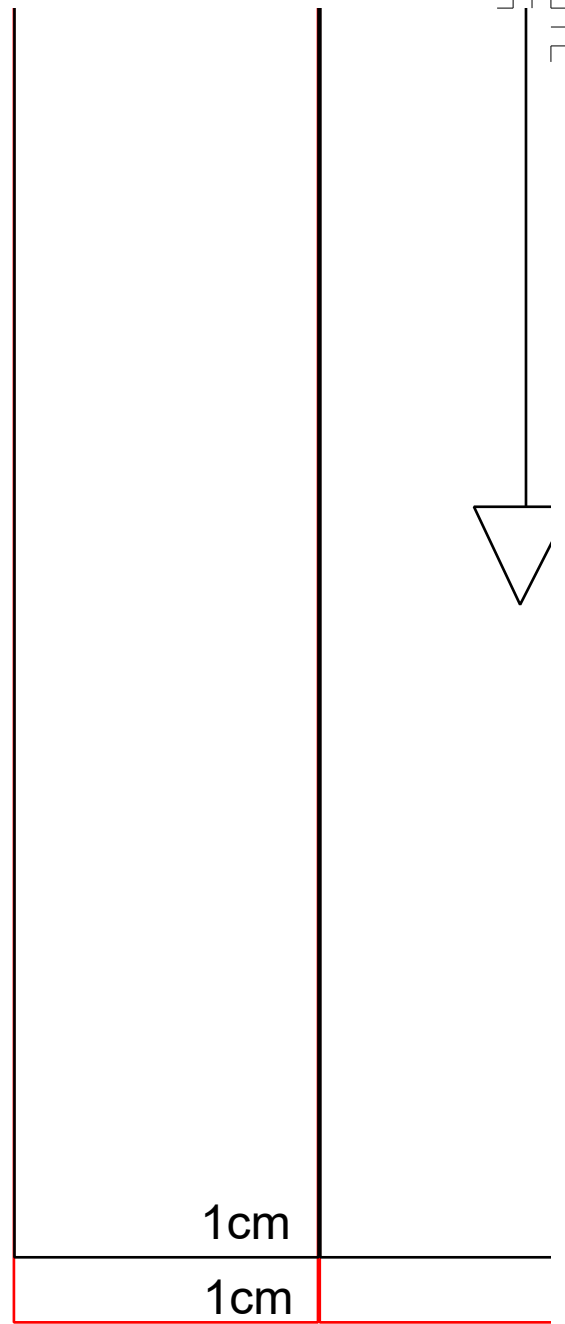
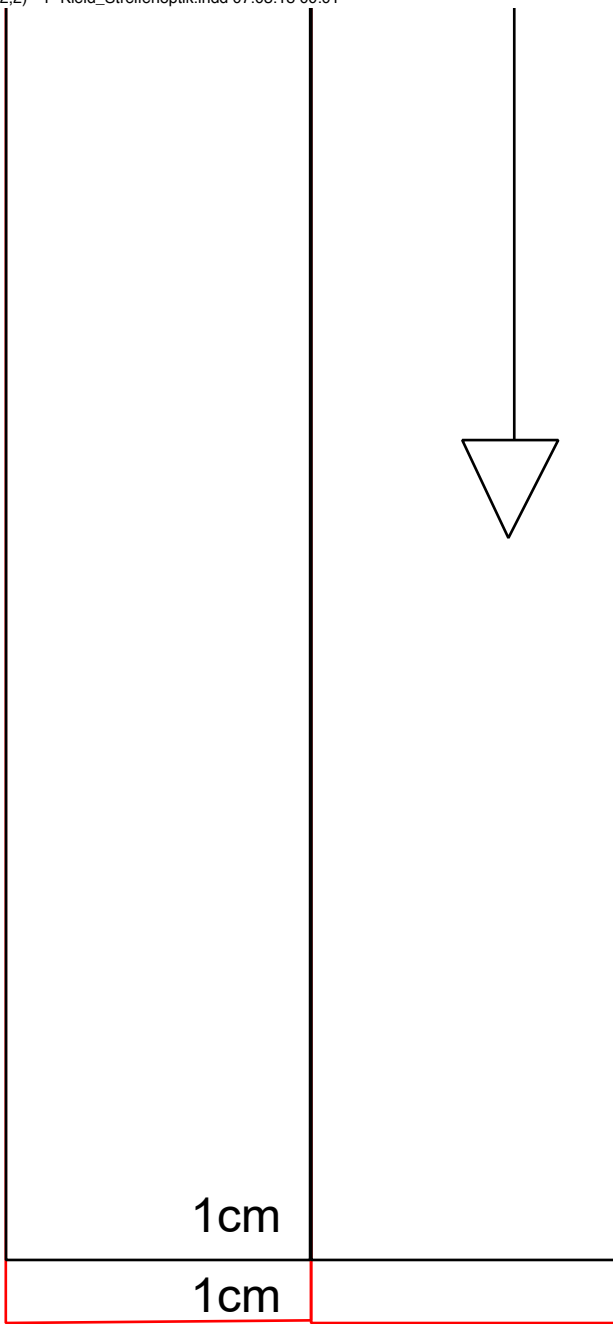




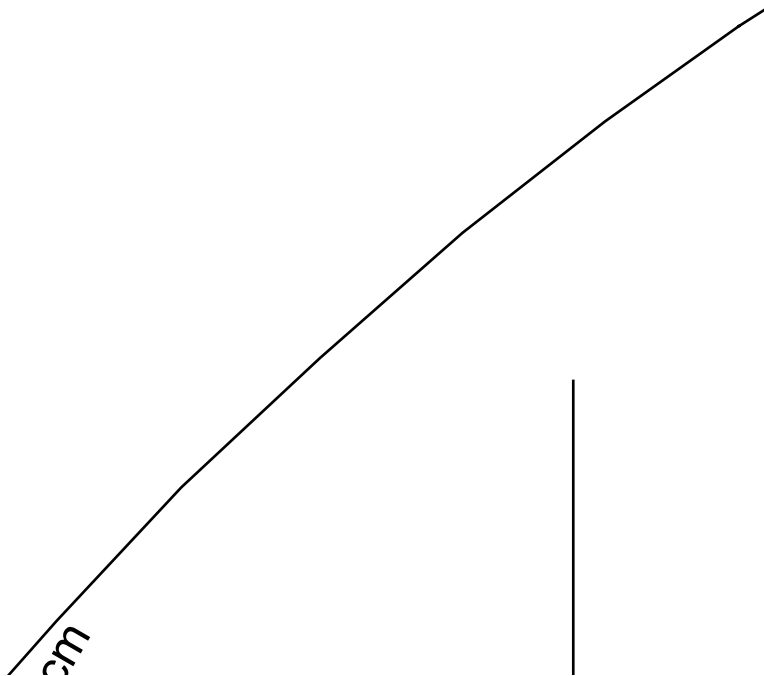
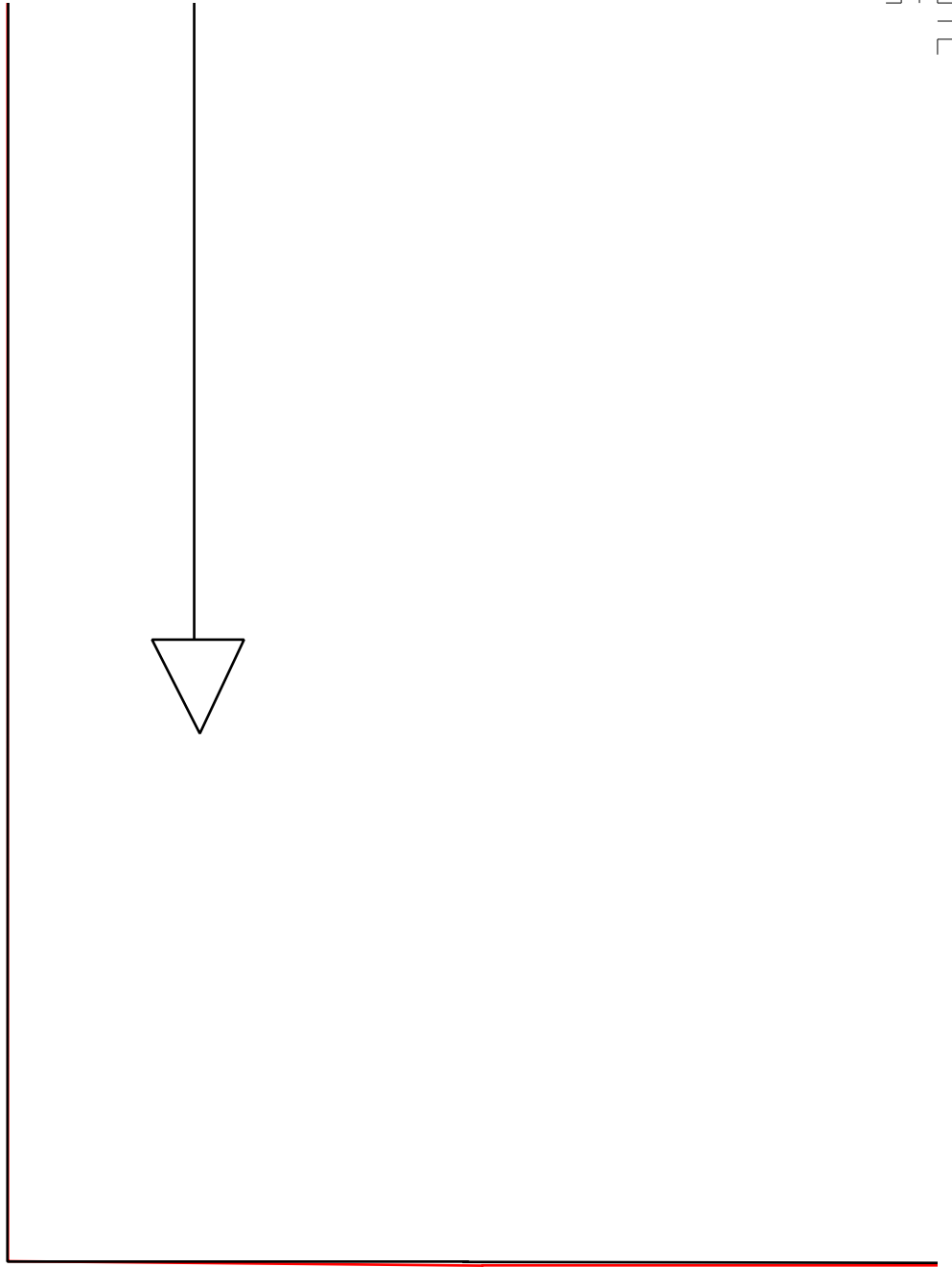
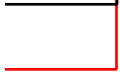
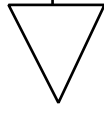


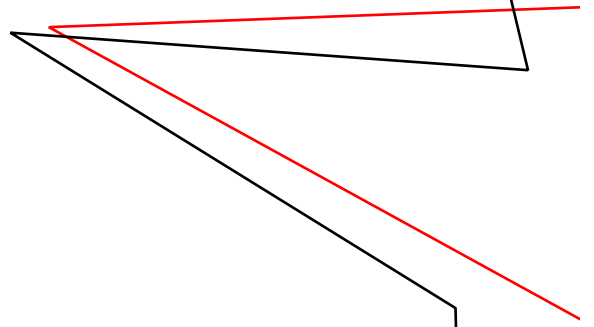
**Gr. 36/38** -----

**Gr. 40/42** -----



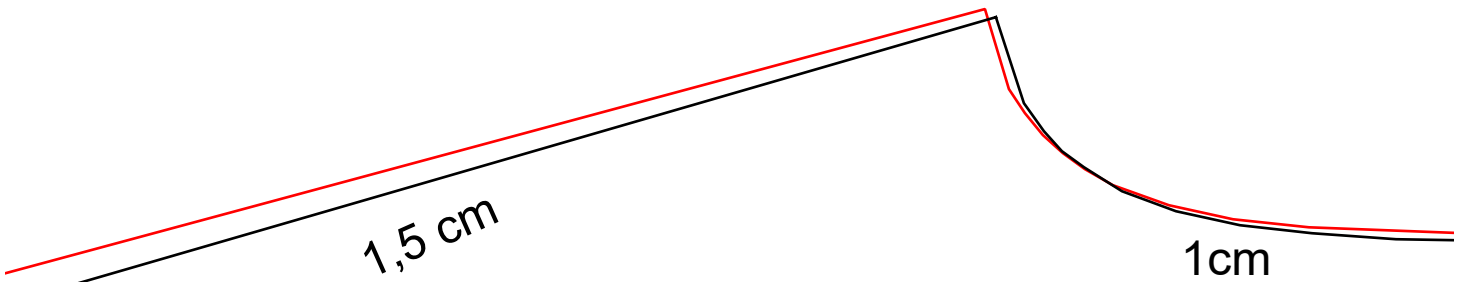






1cm

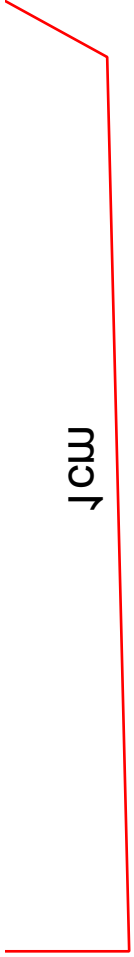
2,5 cm

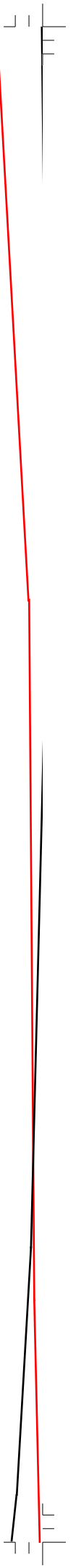


1,5 cm

1cm





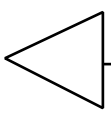




# Ärmel "Dress"

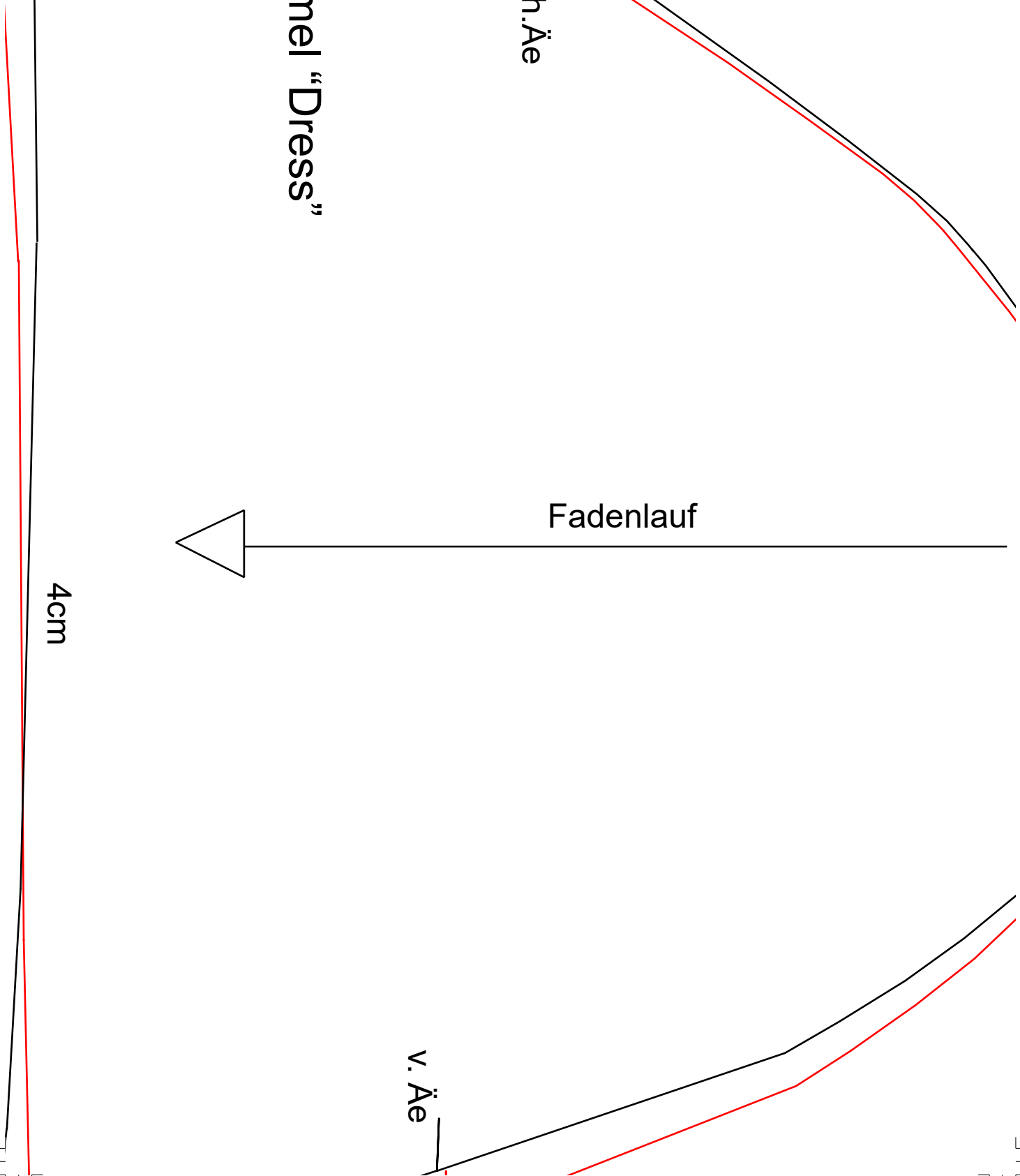
h. Äe

Fadenlauf



4cm

v. Äe



# Taschenbeutel "Dress"

1cm

Fadenlauf

1cm

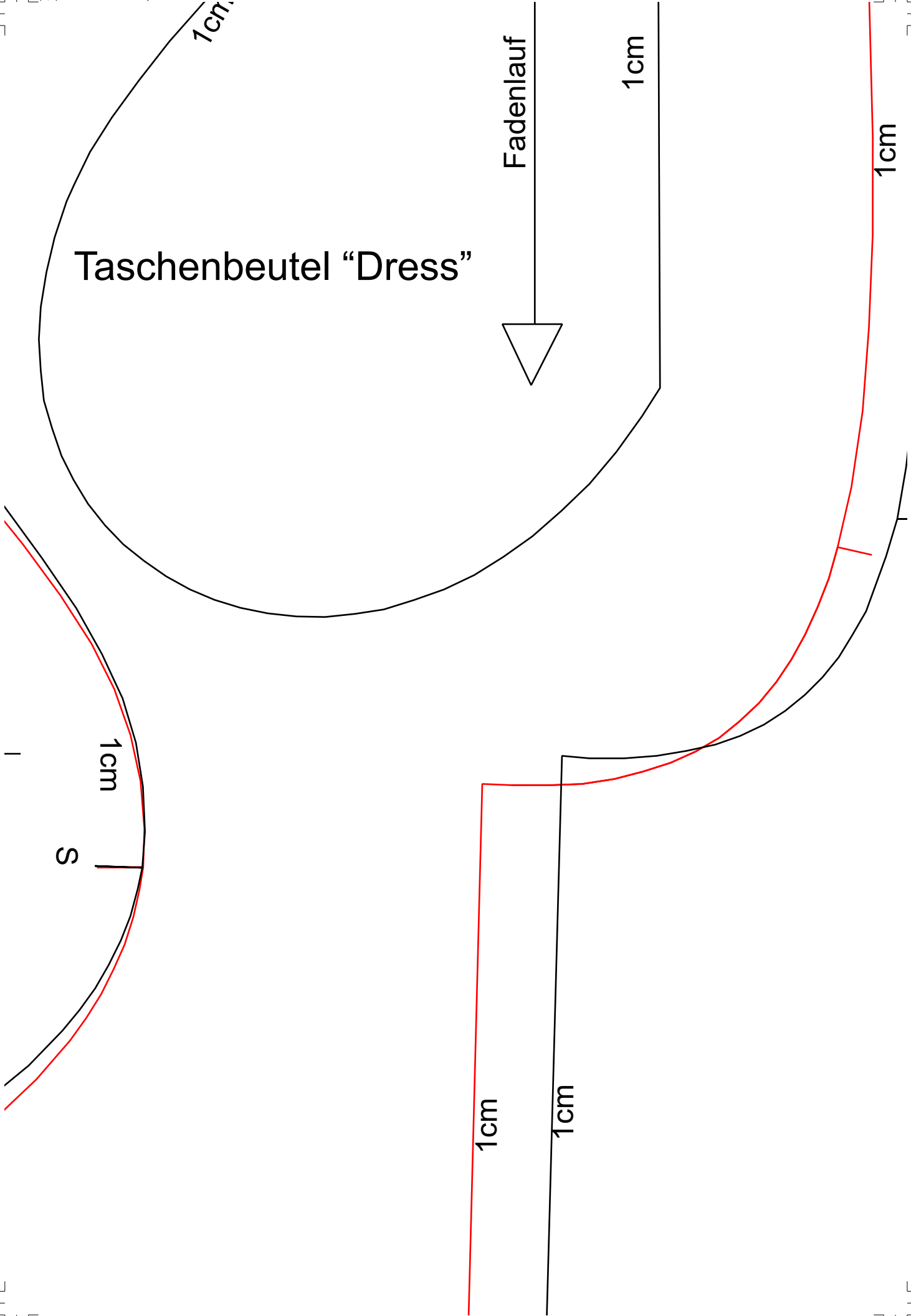
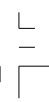
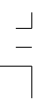
1cm

1cm

S

1cm

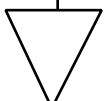
1cm



1cm  
1cm

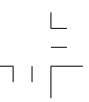
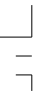
# Rückteil "Dress"

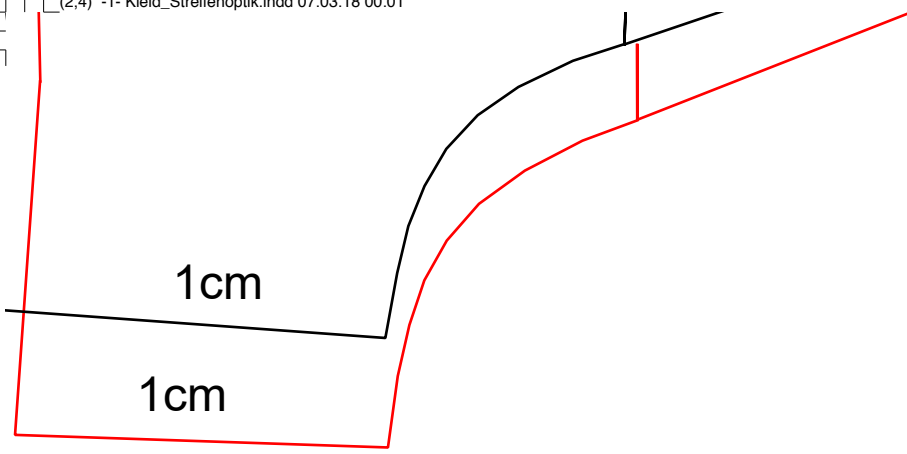
Fadenlauf



BRUCH HM







2,5 cm

Ta

# Vorderteil Rock "Dress"

Fadenlauf





Taschenknips



1cm



1cm



1cm

Taschenknips



1cm

Rückteil





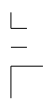
2,5 cm



2,5 cm

il Rock "Dress"

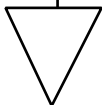






BRUNN VIVI

FS



Ta

Taschenknips



1c



1c



,



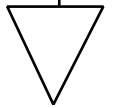
1

Taschenknips





Fadenla

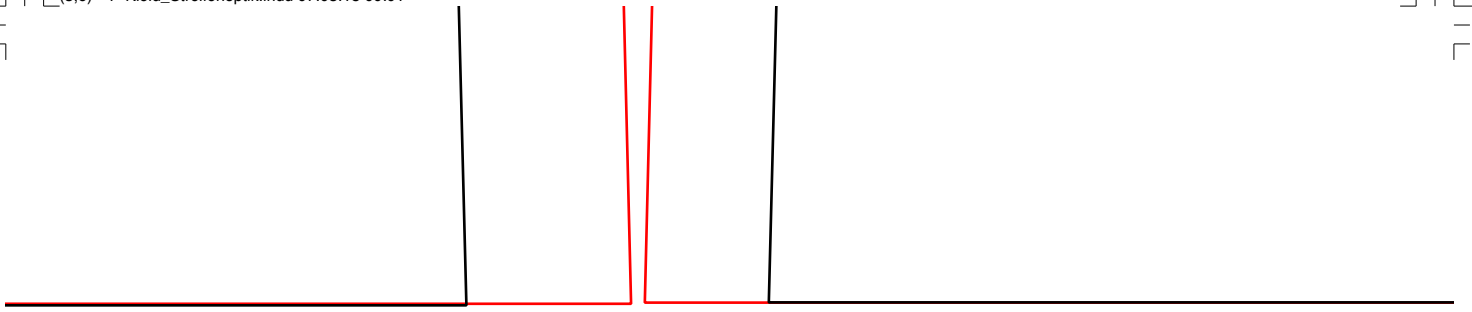


BRUCH HM



4cm

---





4cm

---



