

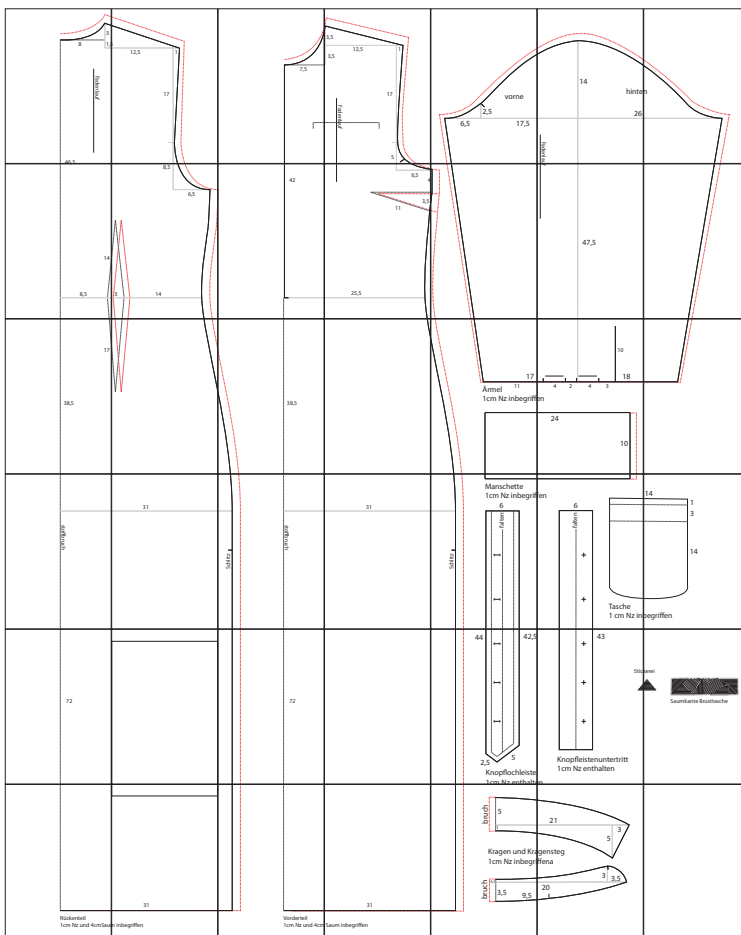
Maxi Leinenkleid

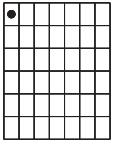
Kollektion N°7

Größe 36/38 und 40/42 (gestrichelte rote Linie)

Drucken Sie die Schnittmusterseiten auf DIN A4 Papier aus. Achten Sie dabei darauf, dass das Druckergebnis in den Druckereinstellung nicht skaliert wird. Das Kontrollkästchen sollte genau 1 cm auf allen Seiten betragen.

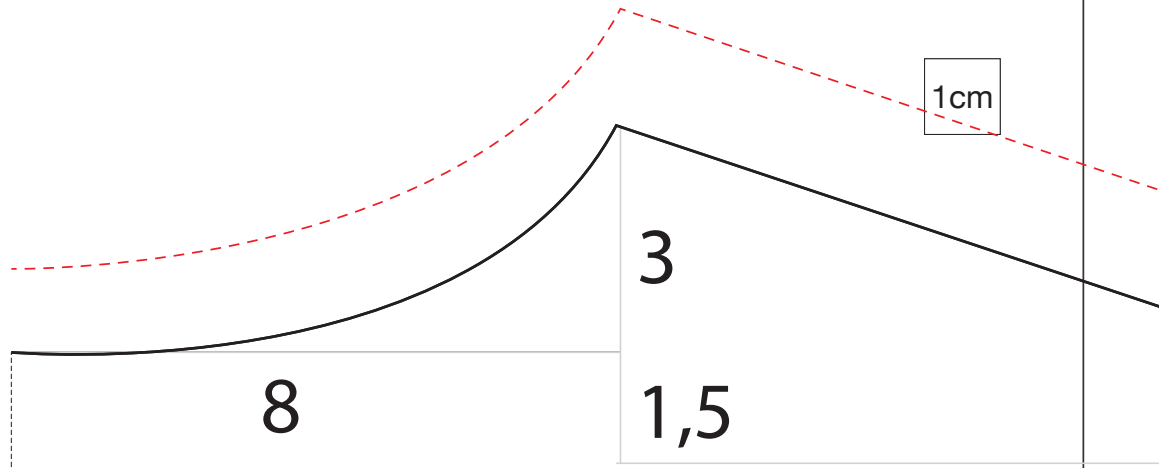
Schneiden Sie jeweils an einer langen Seite eine Schnittkante ab und kleben die Seiten gemäß untenstehender Übersicht zusammen.





1.1

1.1



8

3

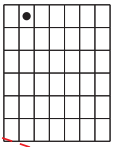
1,5

1cm

12,5

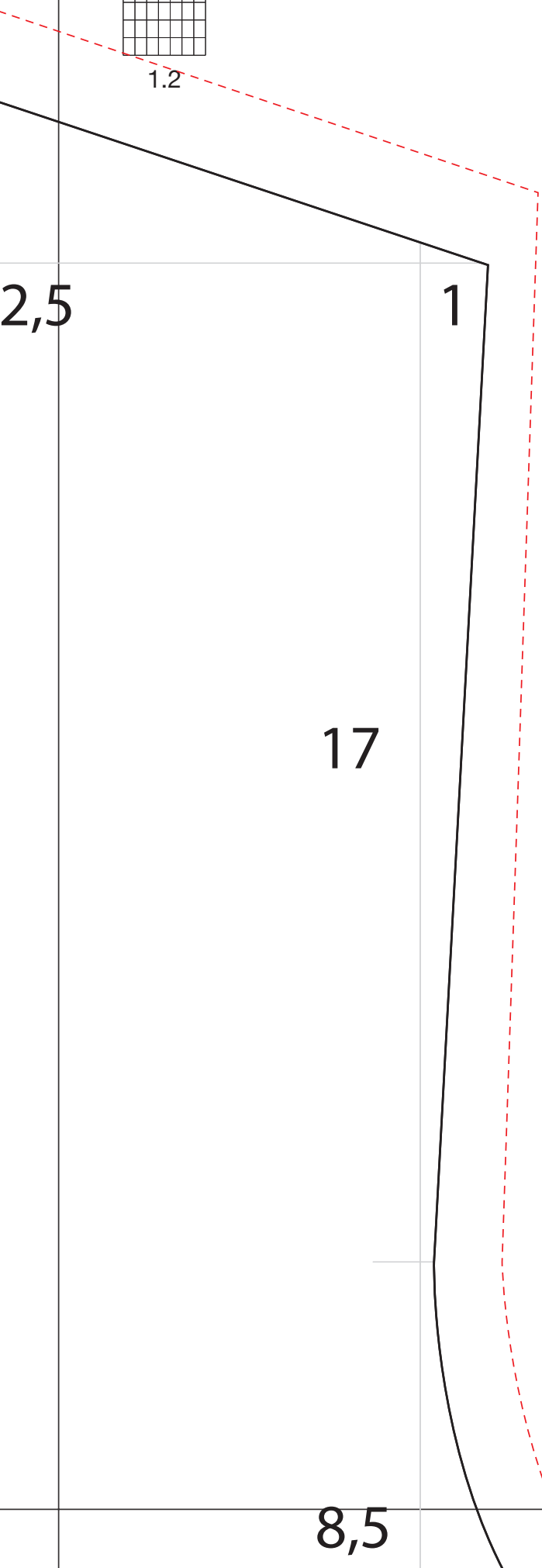
Fadenlauf

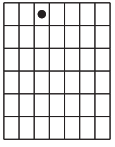
46,5



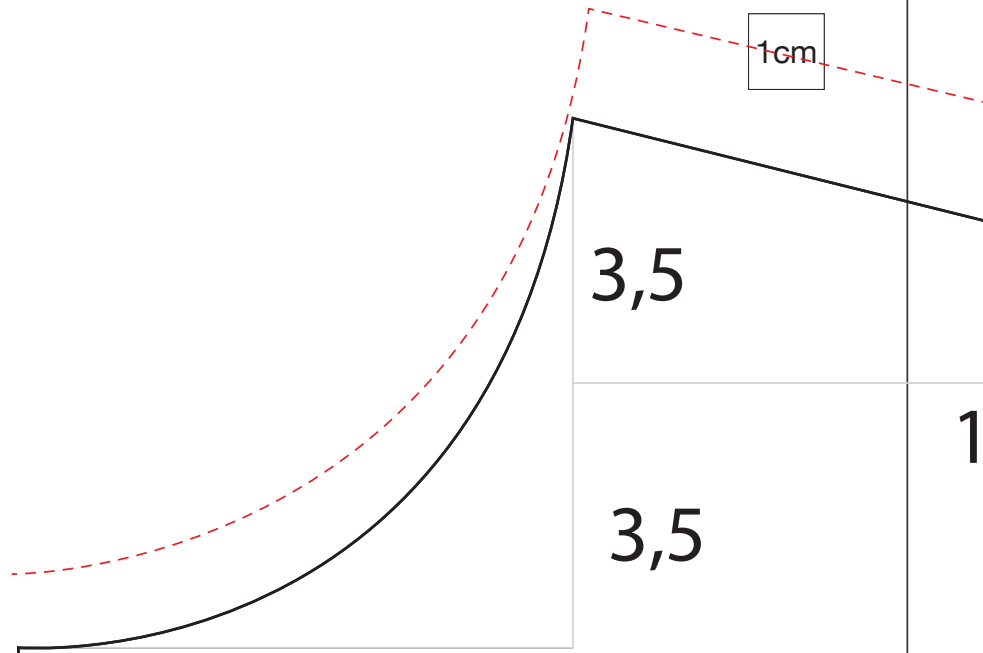
1.2

1cm



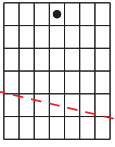


1.3



Fadenlauf

1



1.4

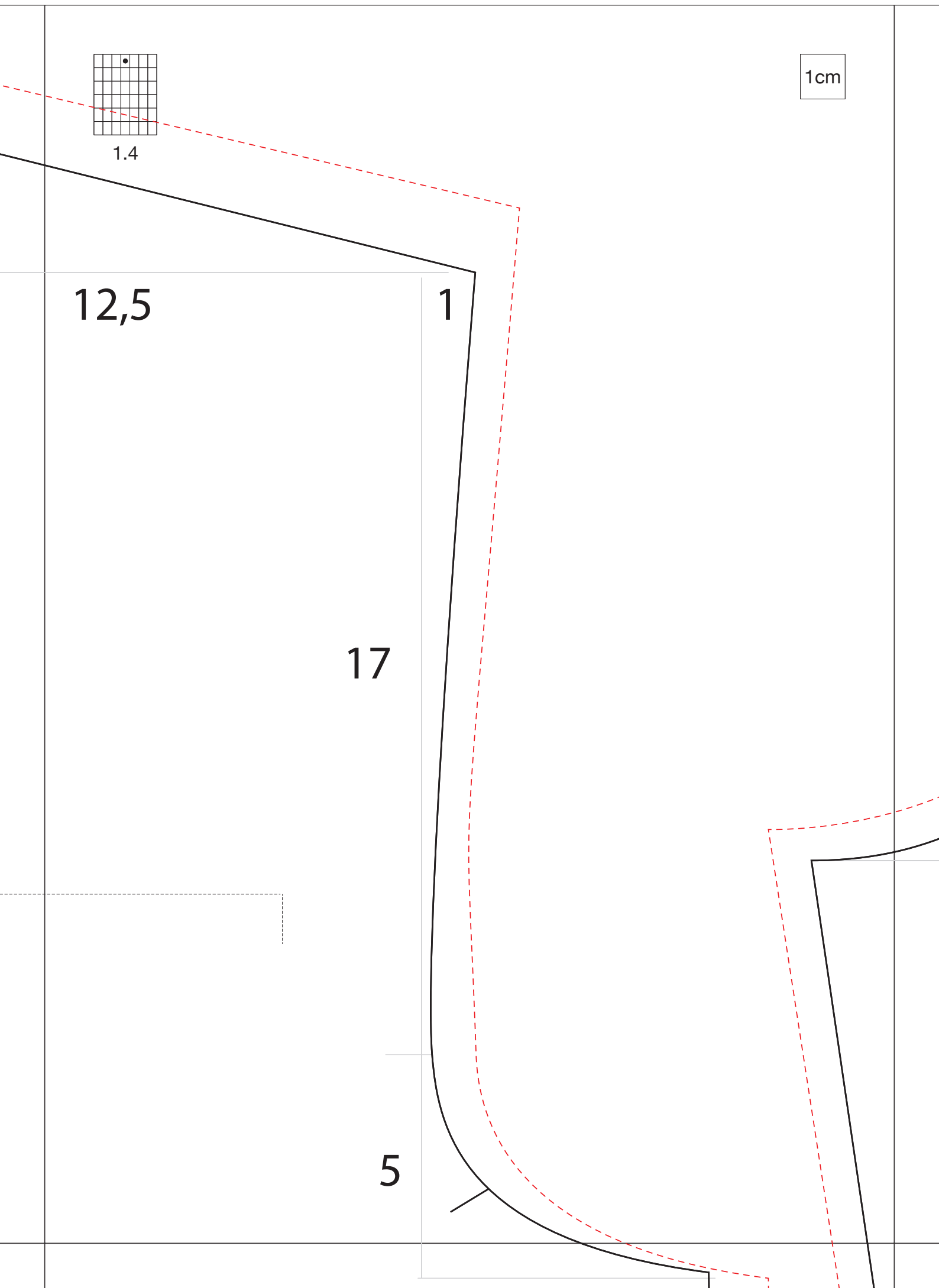
1cm

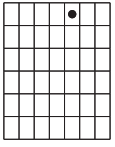
12,5

1

17

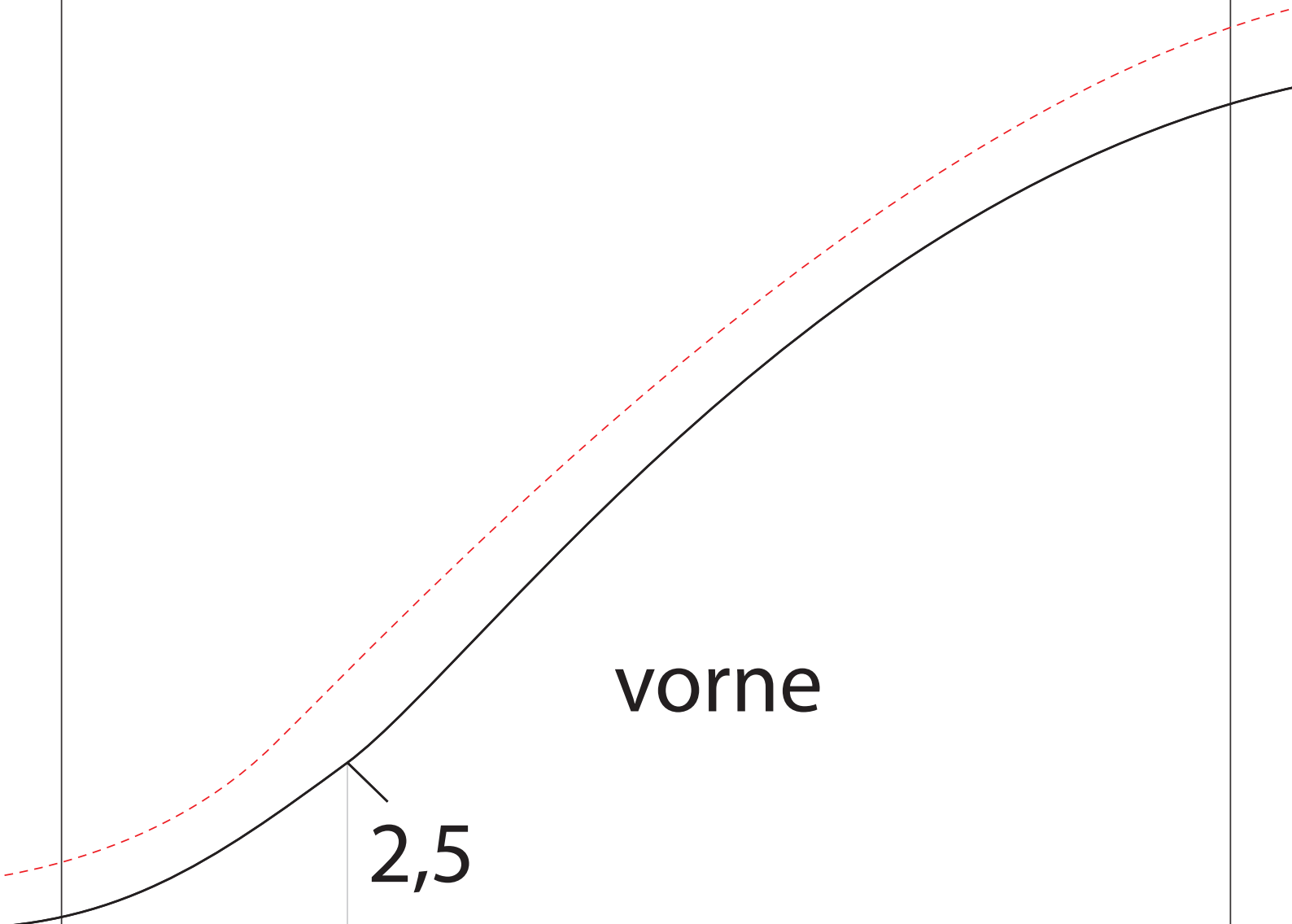
5





1.5

1cm



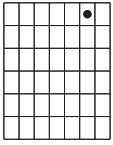
vorne

2,5

6,5

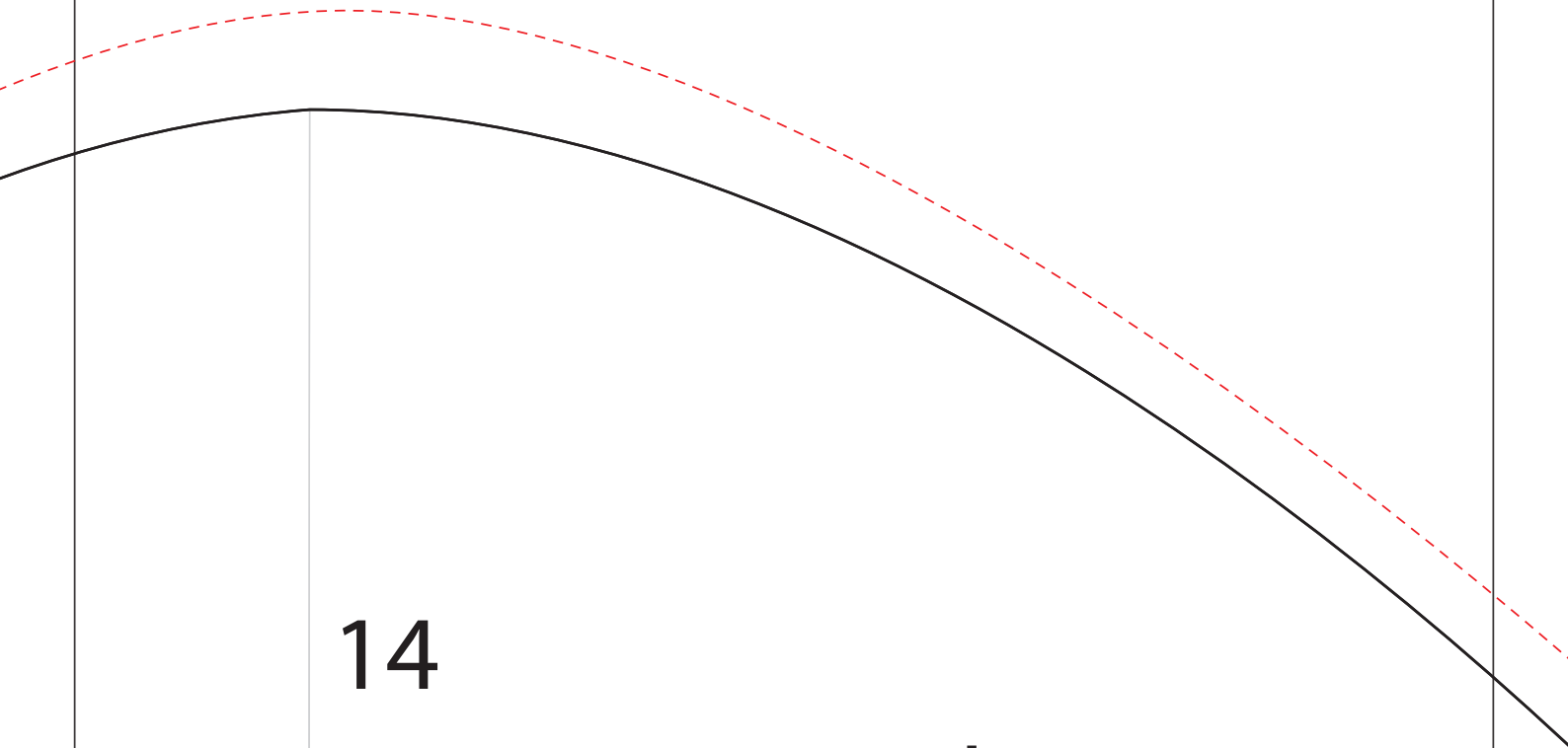
17,5

Fadenlauf



1.6

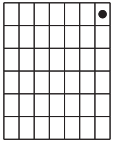
1cm



14

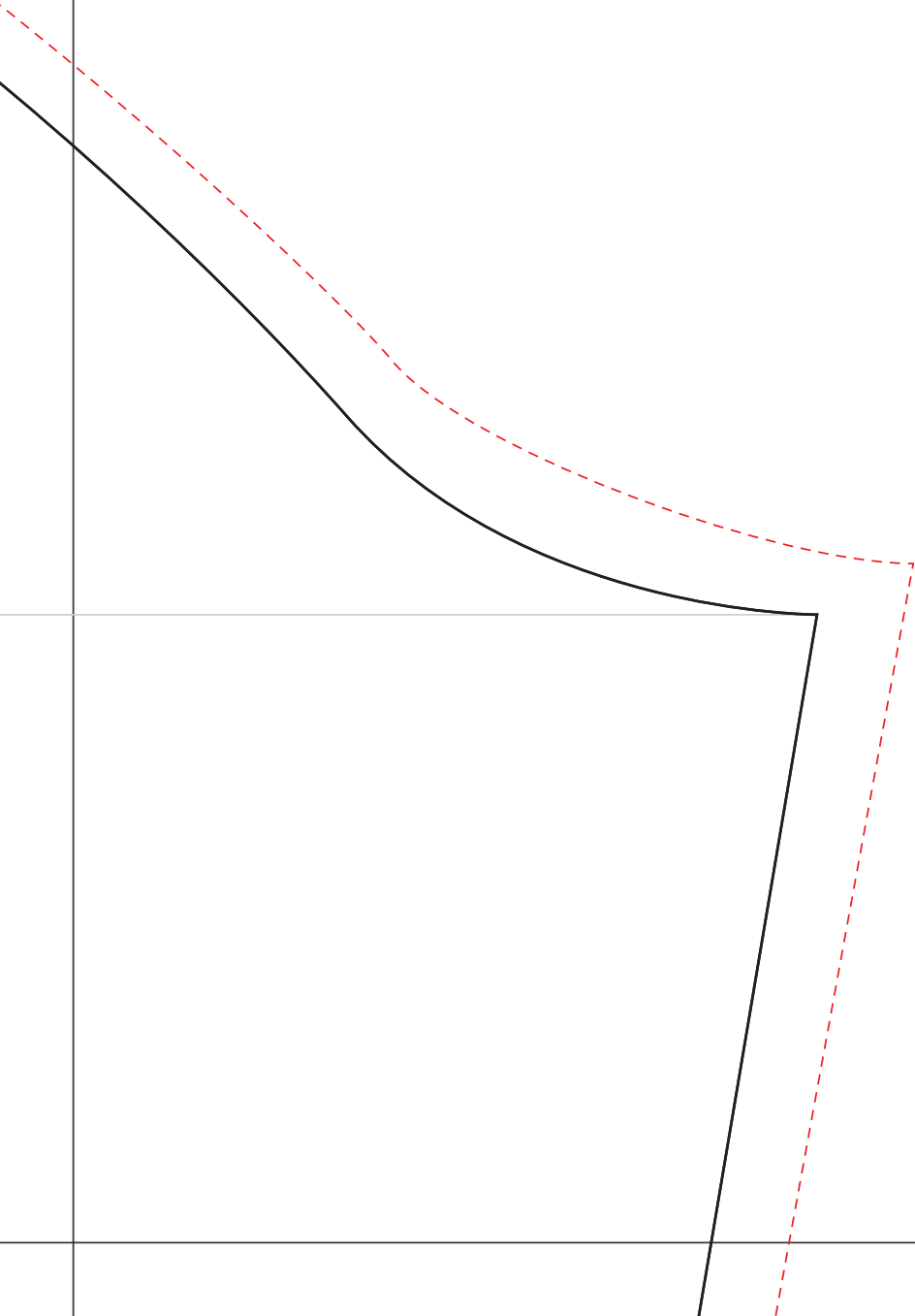
hinten

26

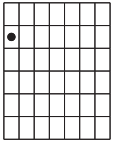


1.7

1cm



46,5



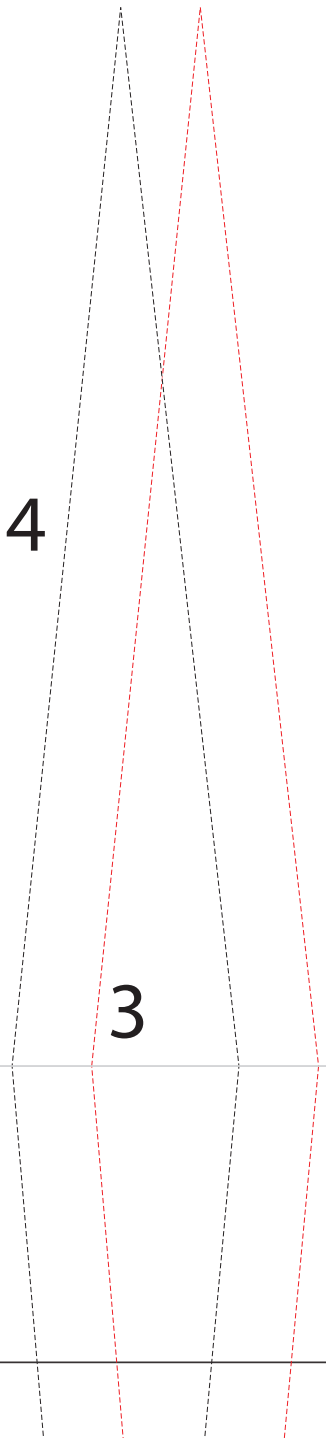
2.1

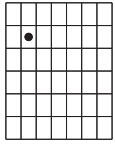
1cm

14

8,5

3





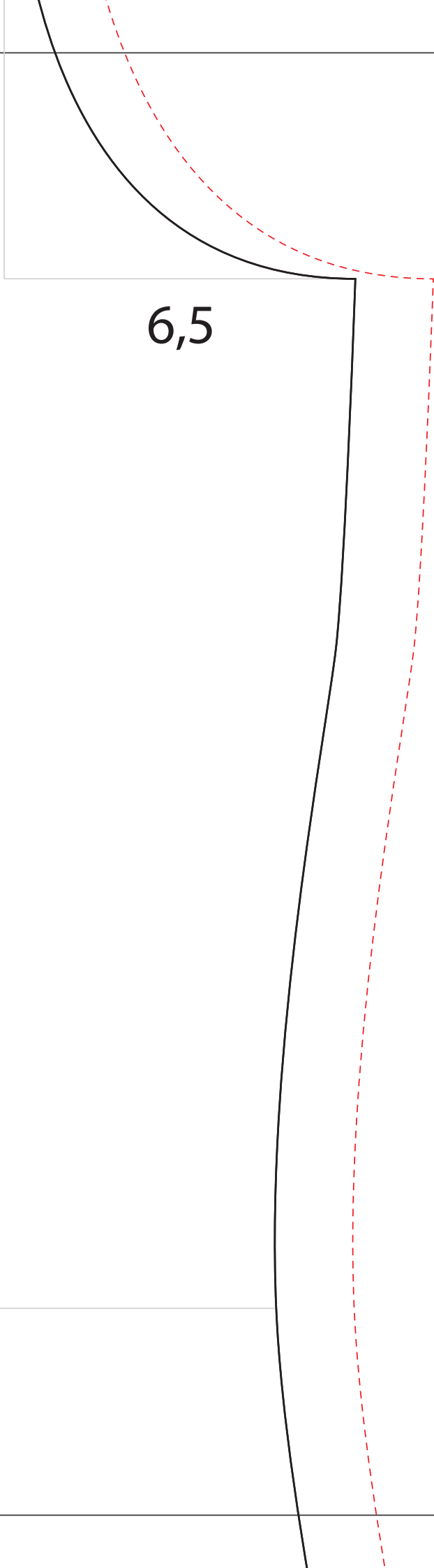
2.2

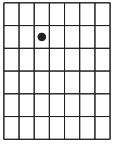
8,5

1cm

6,5

14





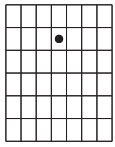
2.3

42

1cm



25



2.4

6,5

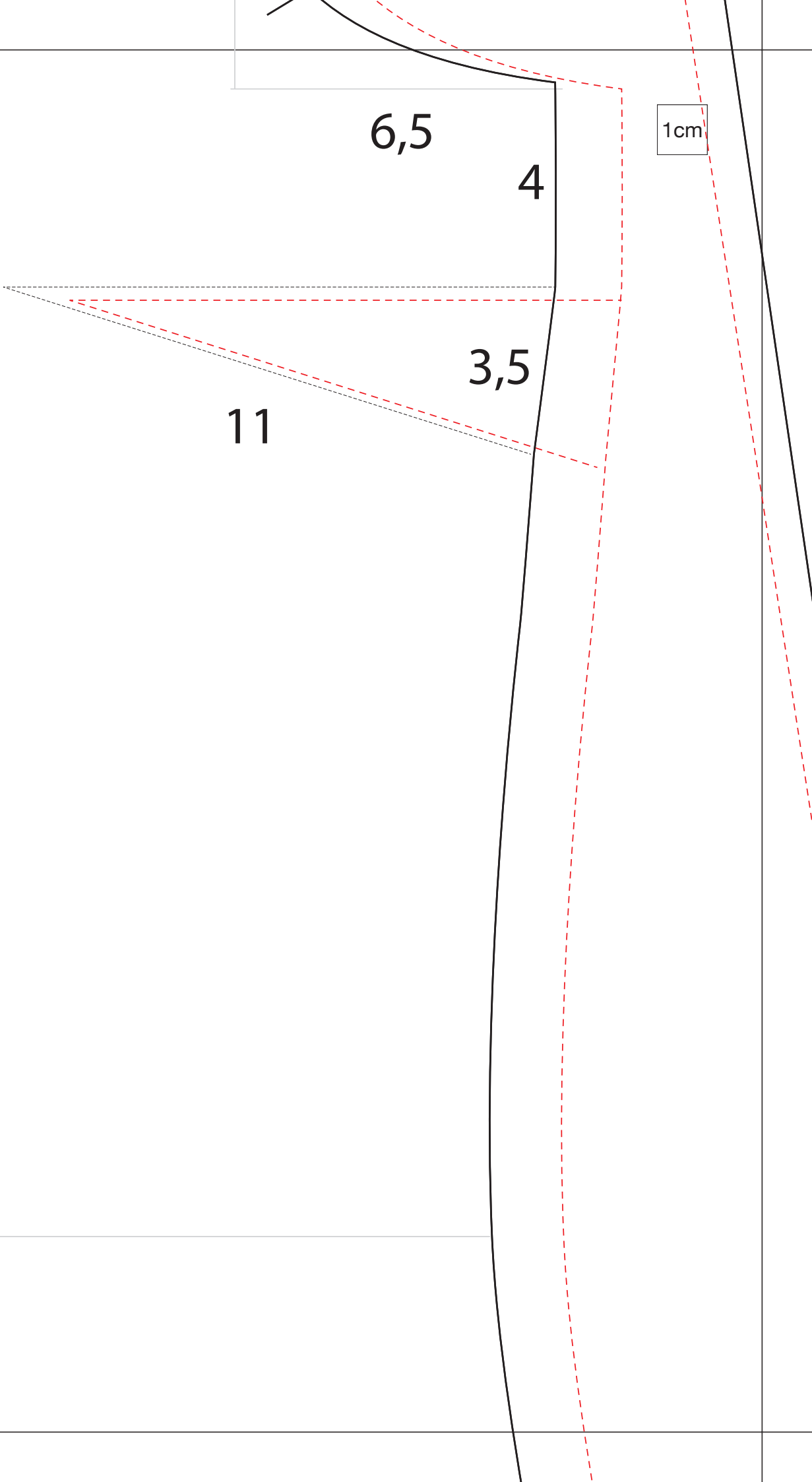
4

1cm

3,5

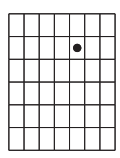
11

25,5

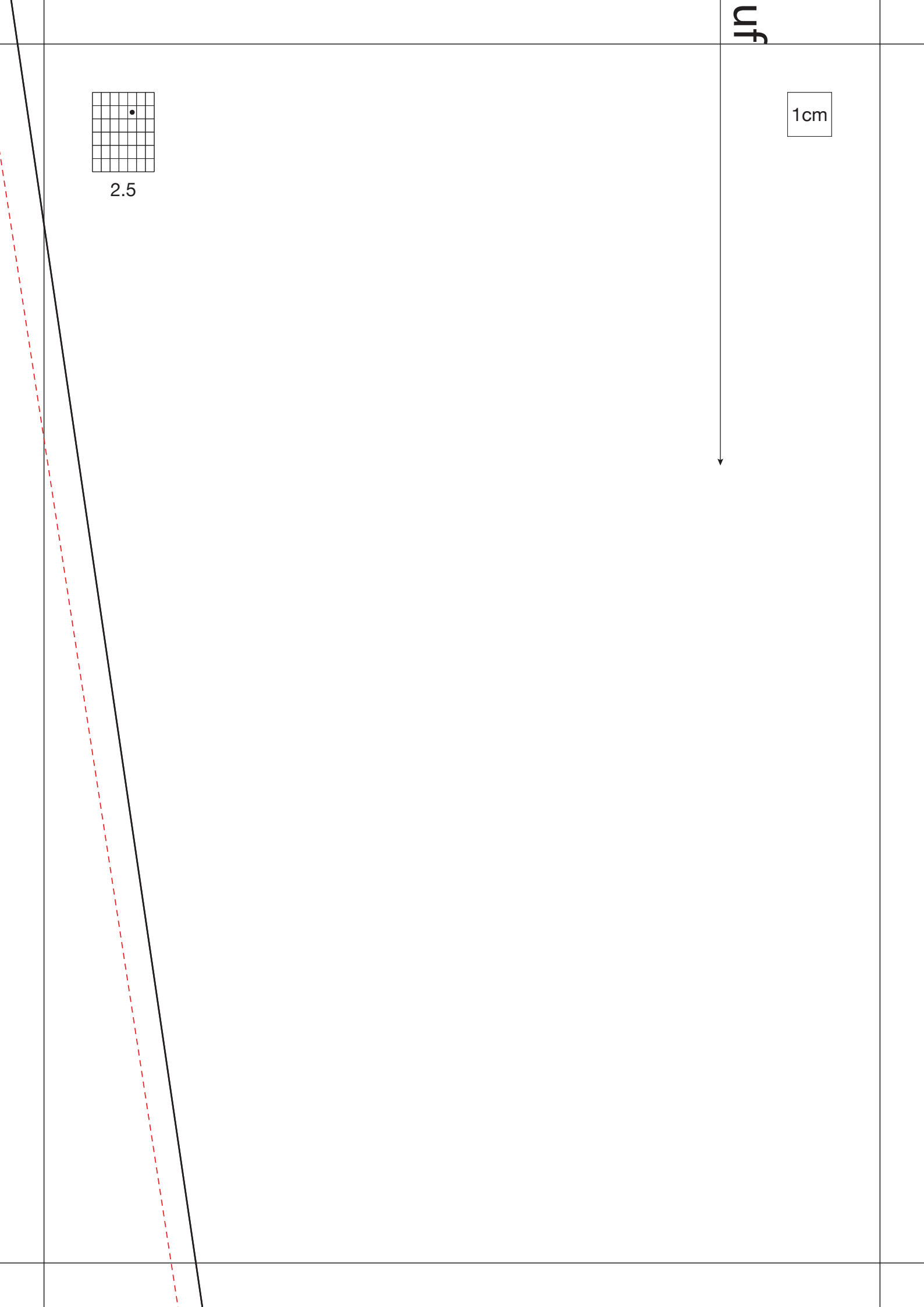


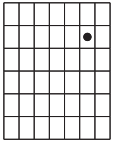
uf

1cm



2.5

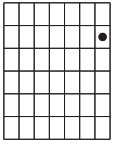




2.6

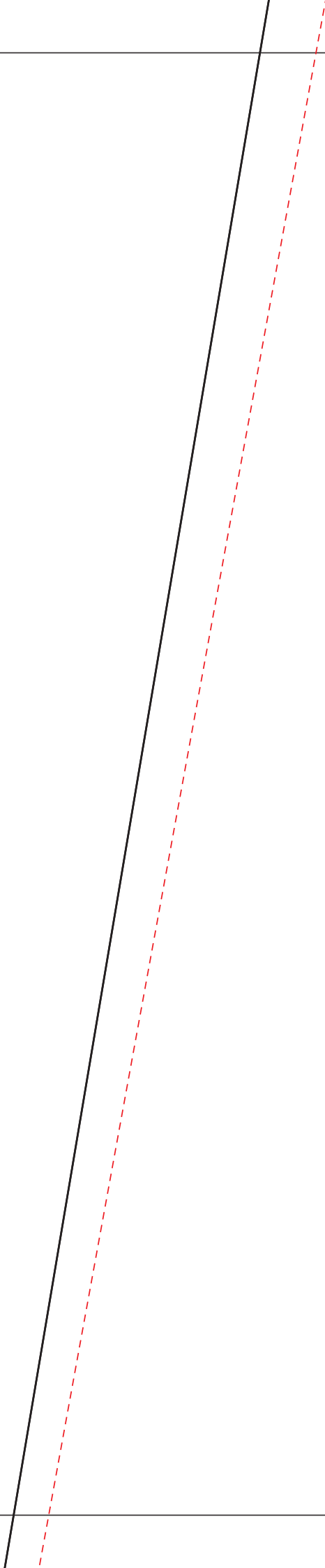
1cm

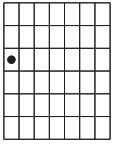
47,5



2.7

1cm



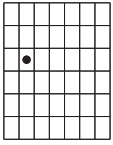


3.1

17

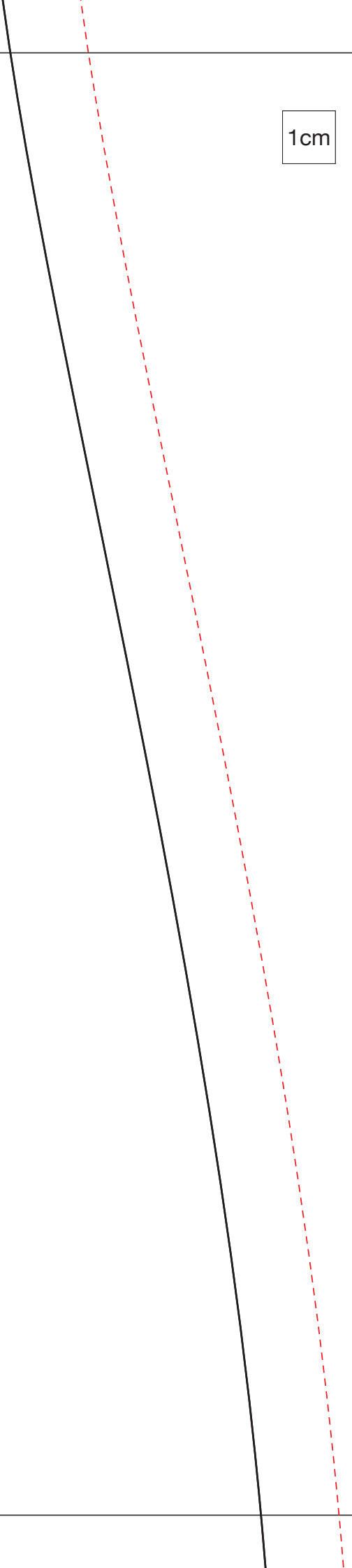
1cm

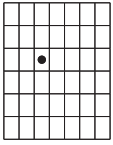
38,5



3.2

1cm

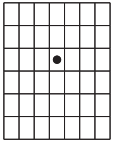




3.3

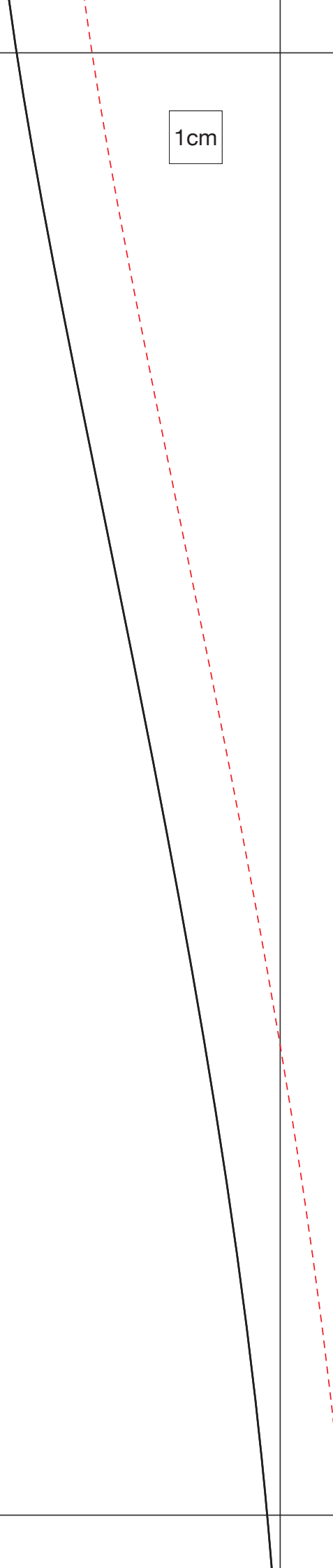
1cm

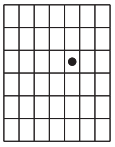
38,5



3.4

1cm





3.5

1cm

17

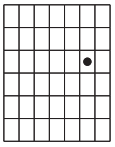
11

4

Ärmel

1cm Nz inbegriffen

24



3.6

1cm

10

18

4

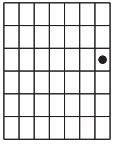
2

4

3

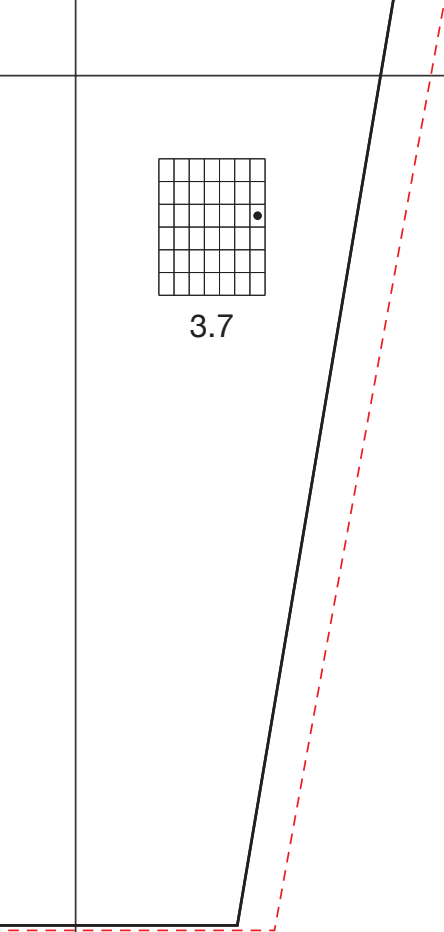
4

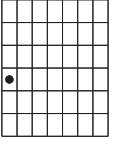
10



3.7

1cm

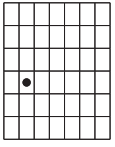




4.1

1cm

stoffbruch

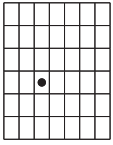


4.2

31

1cm

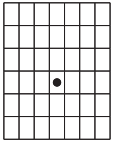
Schlitz



4.3

1cm

stoffbruch

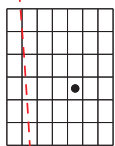


4.4

1cm

31

Schlitz



4.5

1cm

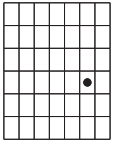
Manschette

1 cm Nz inbegriffen

6

falten





4.6

1cm

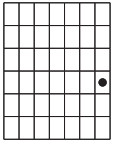
14

6
falten



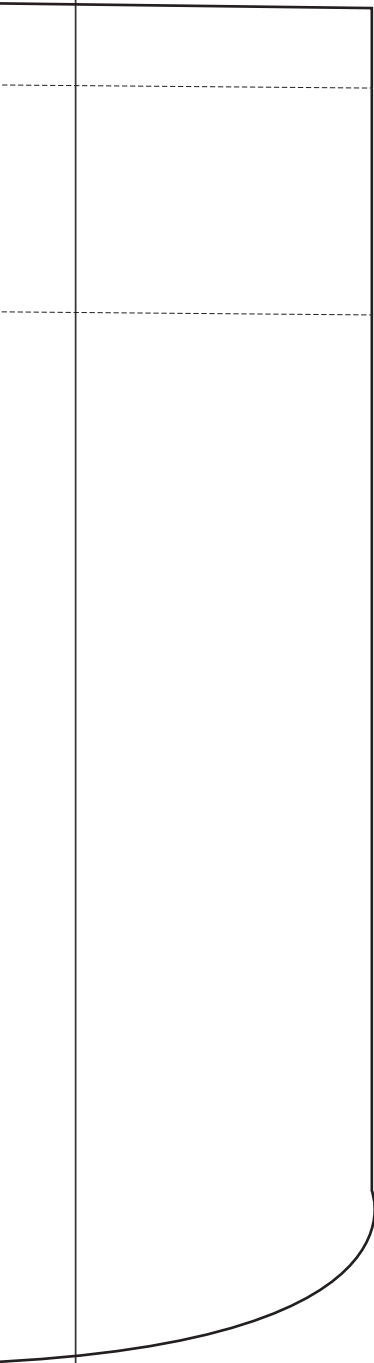
Tasche

1 cm Nz inbegriffen



4.7

1cm

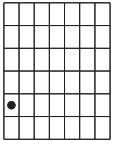


1

3

14

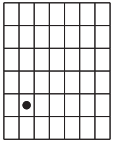
ffen



5.1

1cm

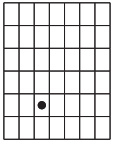
72



5.2

1cm

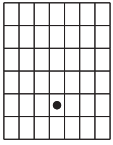




5.3

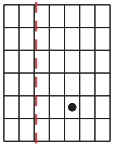
1cm

72



5.4

1cm

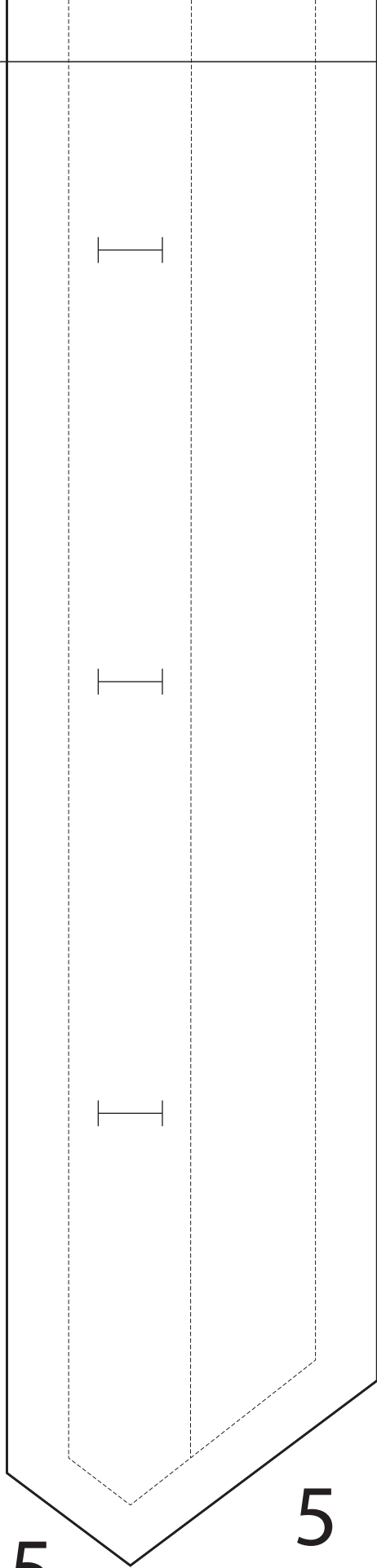


5.5

44

42,5

1cm



2,5

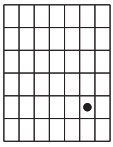
5

Knopflochleiste

1cm Nz enthalten

Kn

1cm



5.6

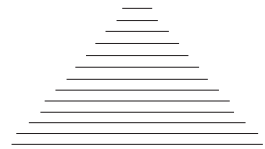


43

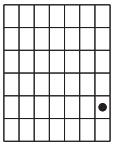
1cm



Stickerei

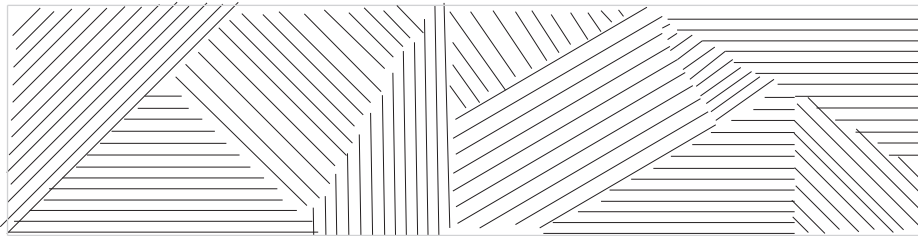


Knopfleistenuntertritt
1cm Nz enthalten

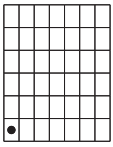


5.7

1cm



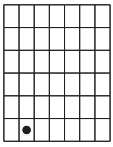
Saumkante Brusttasche



6.1

1cm

Rückenteil
1cm Nz und 4cm Saum inbegriffen

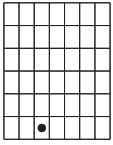


6.2

1cm

31

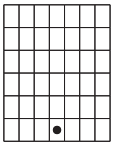
iffen



6.3

1cm

Vorderteil
1cm Nz und 4cm Saum inbeg



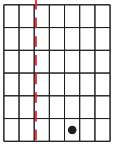
6.4

1cm

31

nbegriffen

Knieprobleme 1cm Nz enthalten

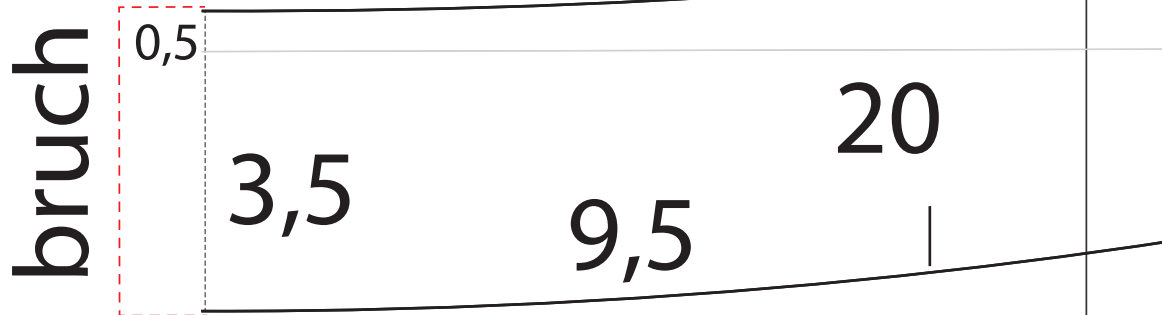


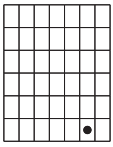
6.5

1cm



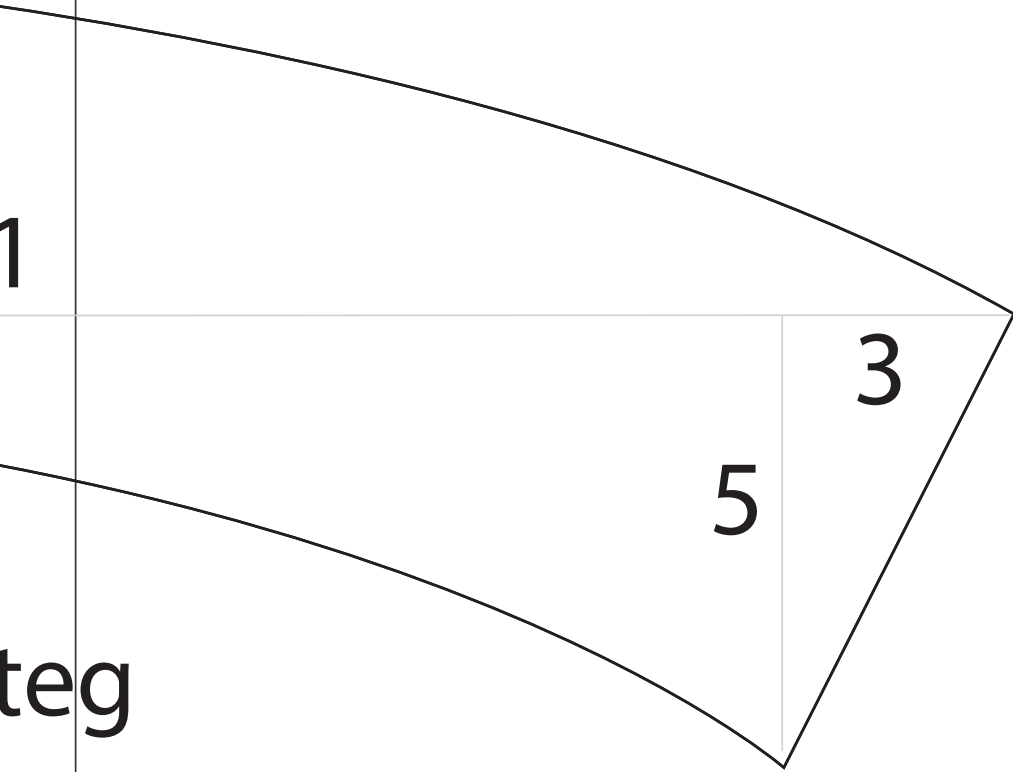
Kragen und Kragensteg 1cm Nz inbegriffena



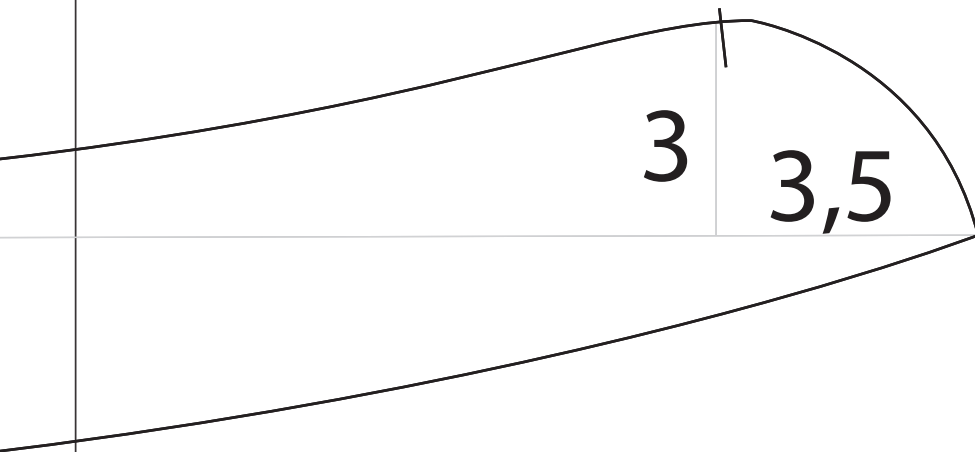


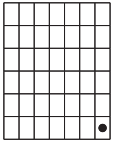
6.6

1cm



teg





6.7

1cm