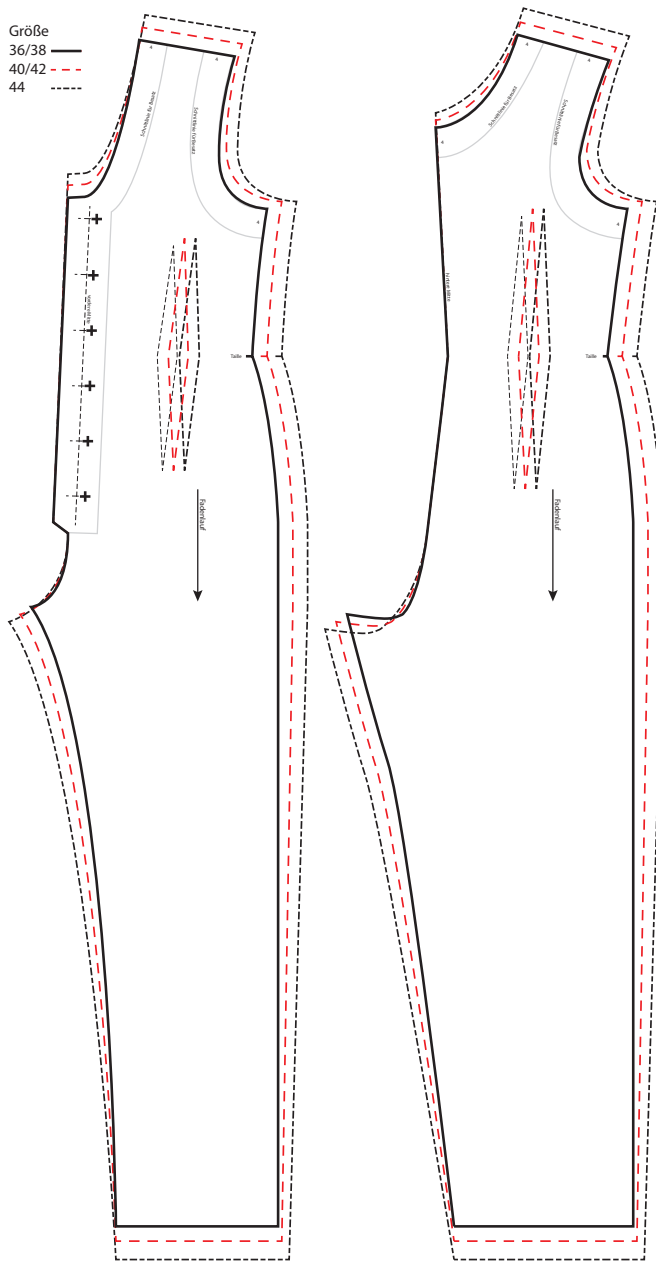


Overall Abbie
Kollektion N°13

Größe 36/38 - 40/42 - 44

Drucken Sie die Schnittmusterseiten auf DIN A4 Papier aus. Achten Sie dabei darauf, dass das Druckergebnis in den Druckereinstellung nicht skaliert wird. Das Kontrollkästchen sollte genau 1 cm auf allen Seiten betragen.



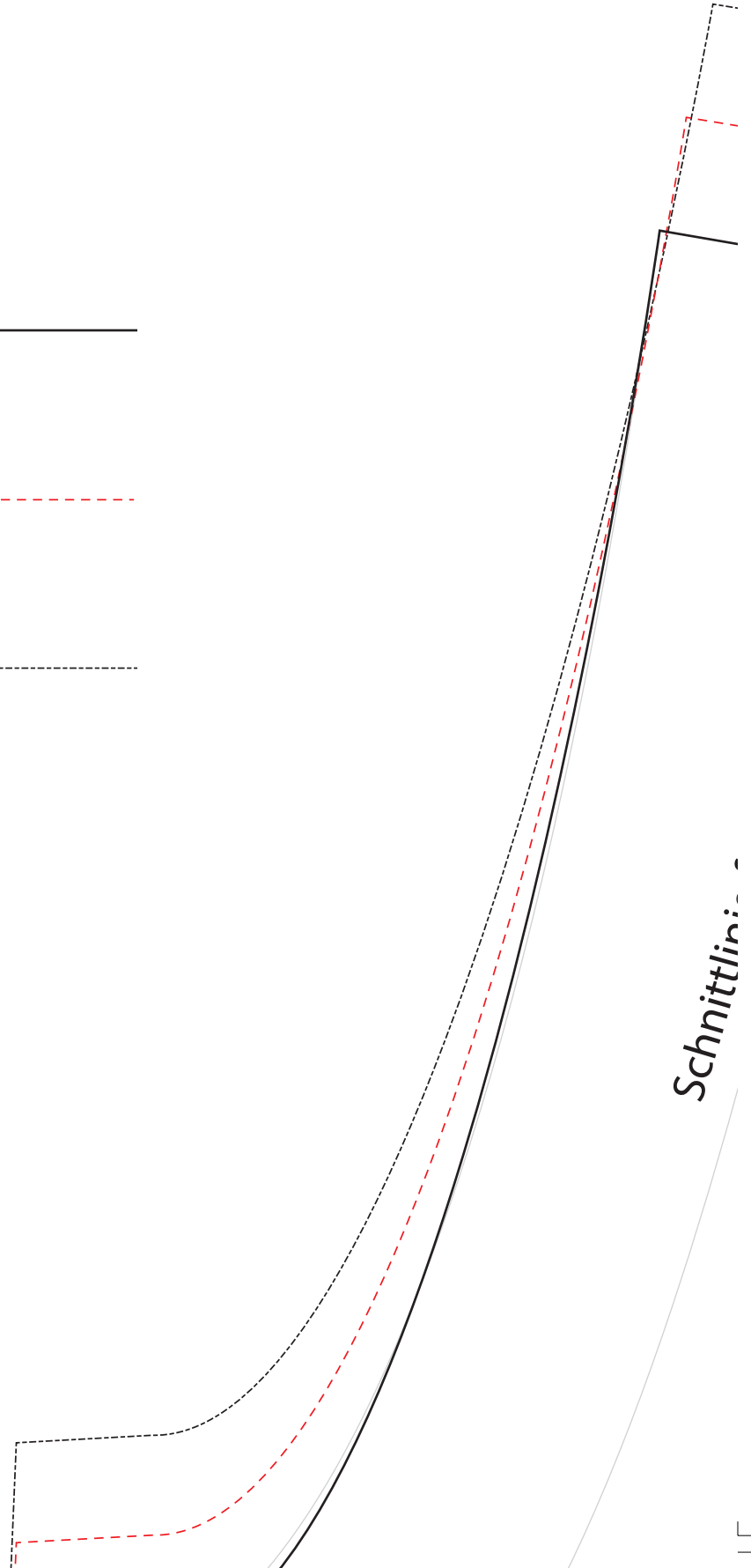
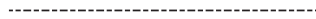
1cm

Größe

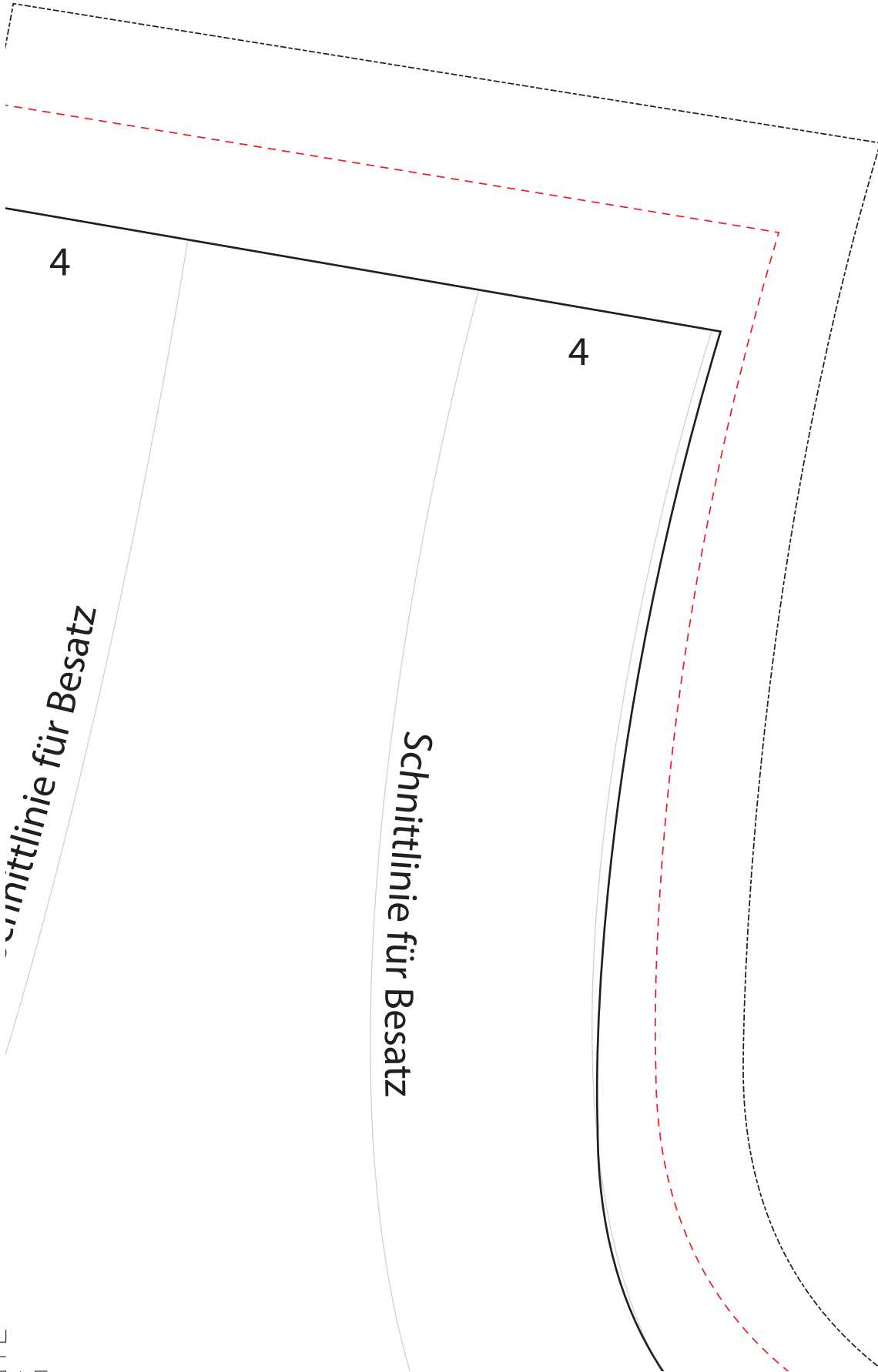
36/38

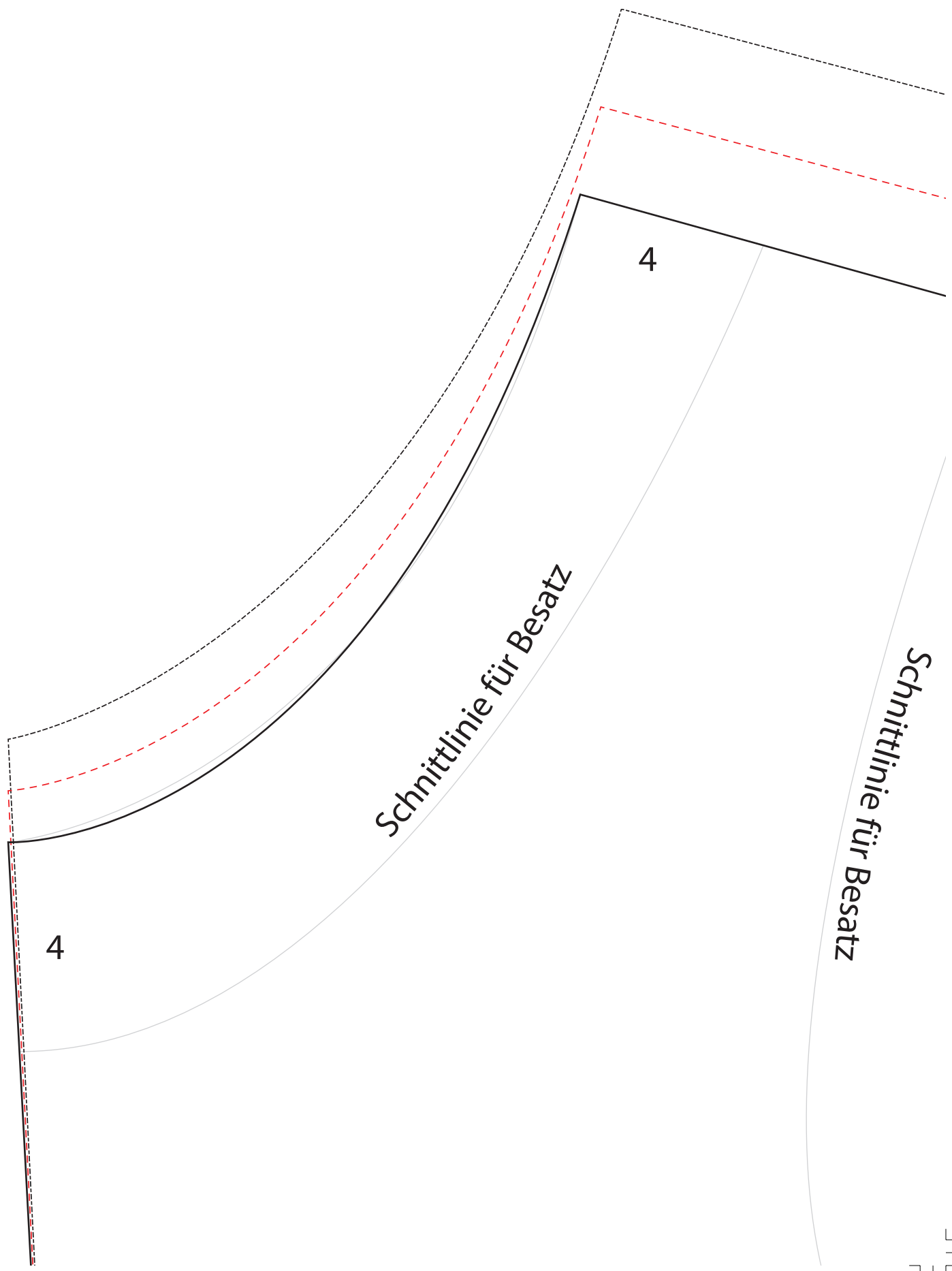
40/42

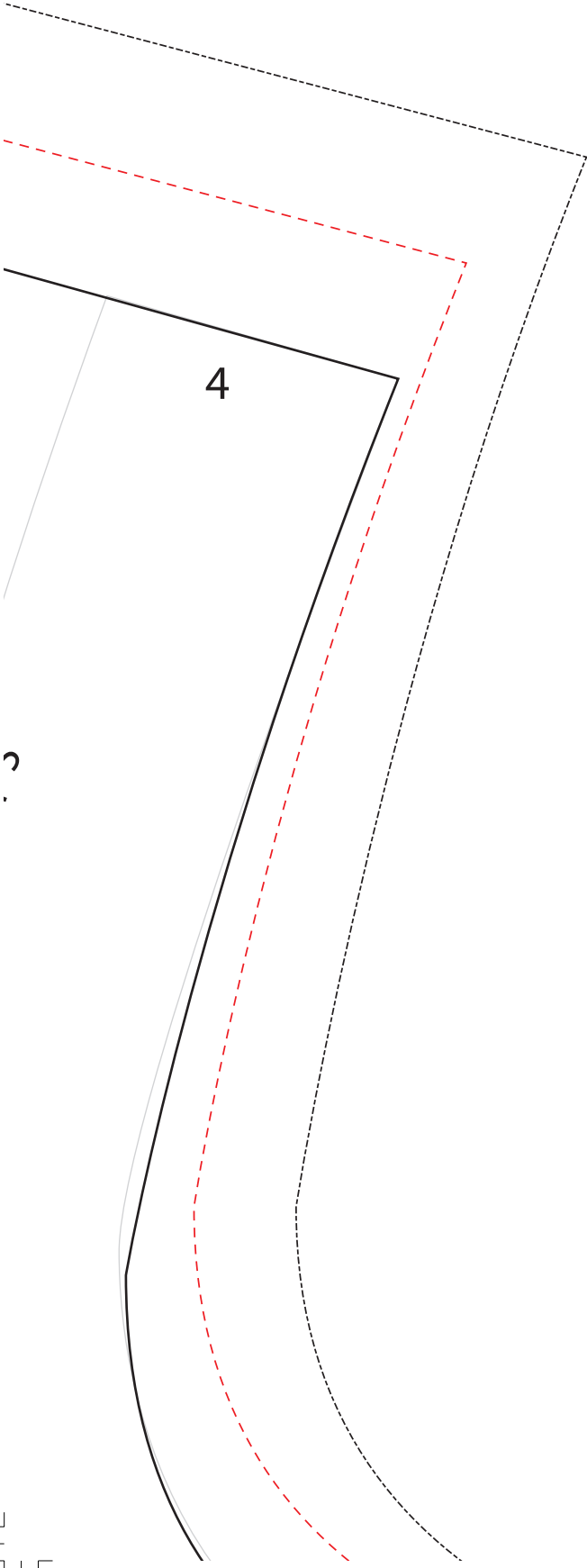
44

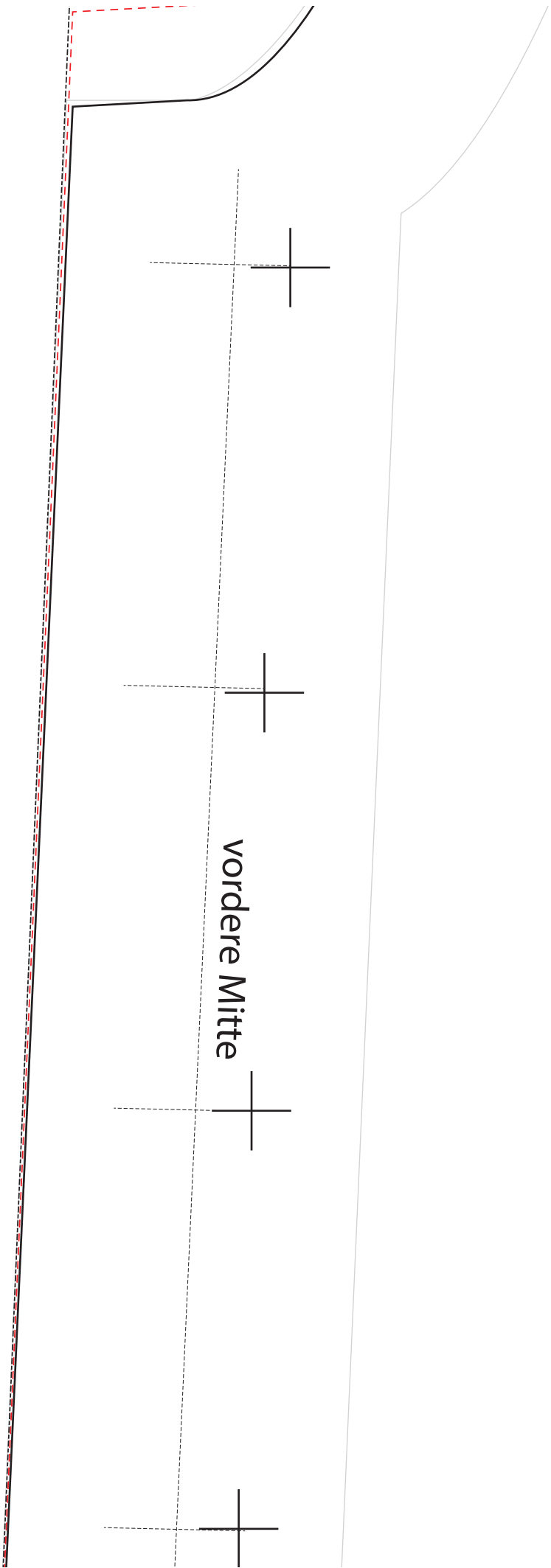


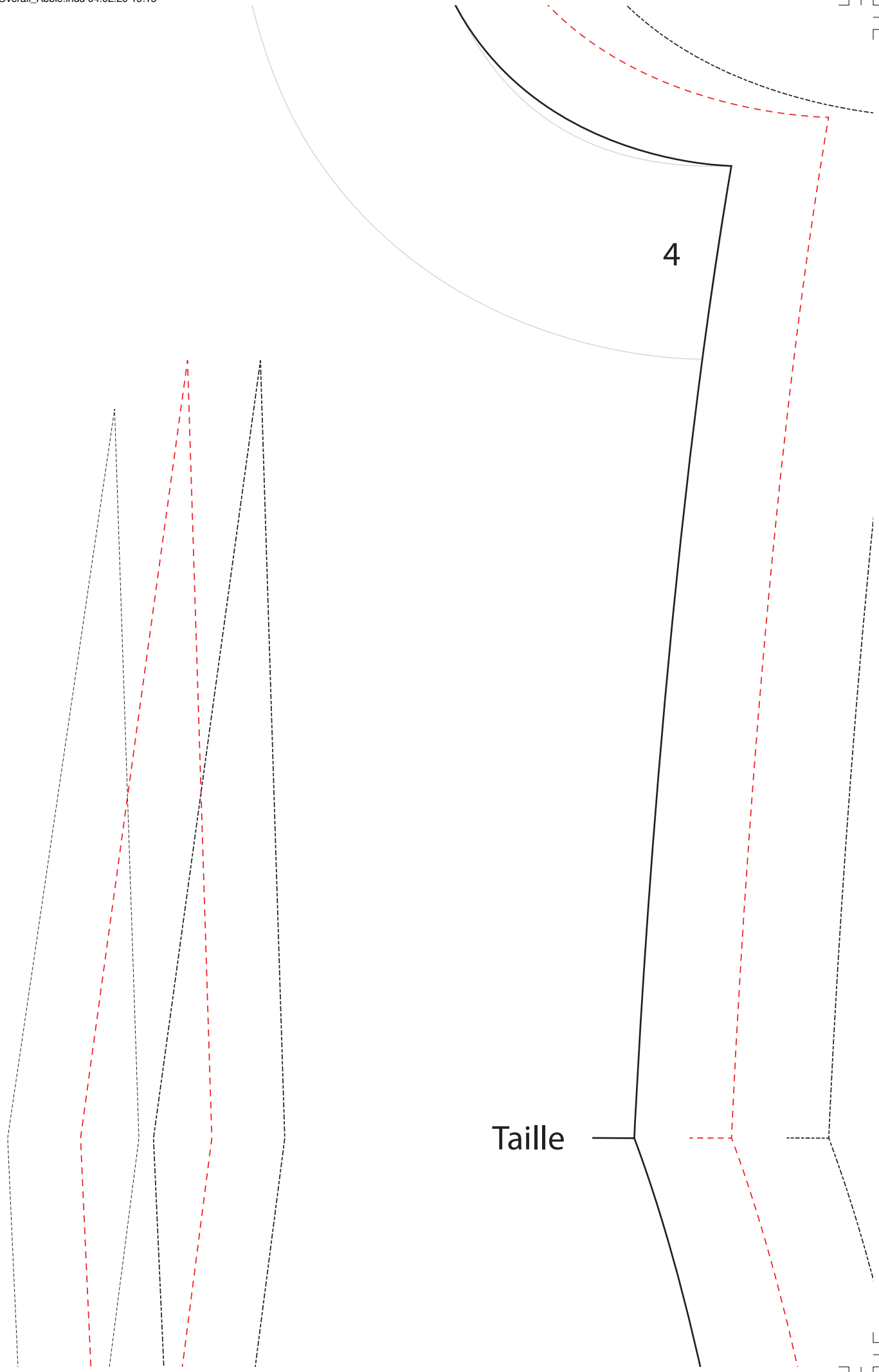
Schnittlinie









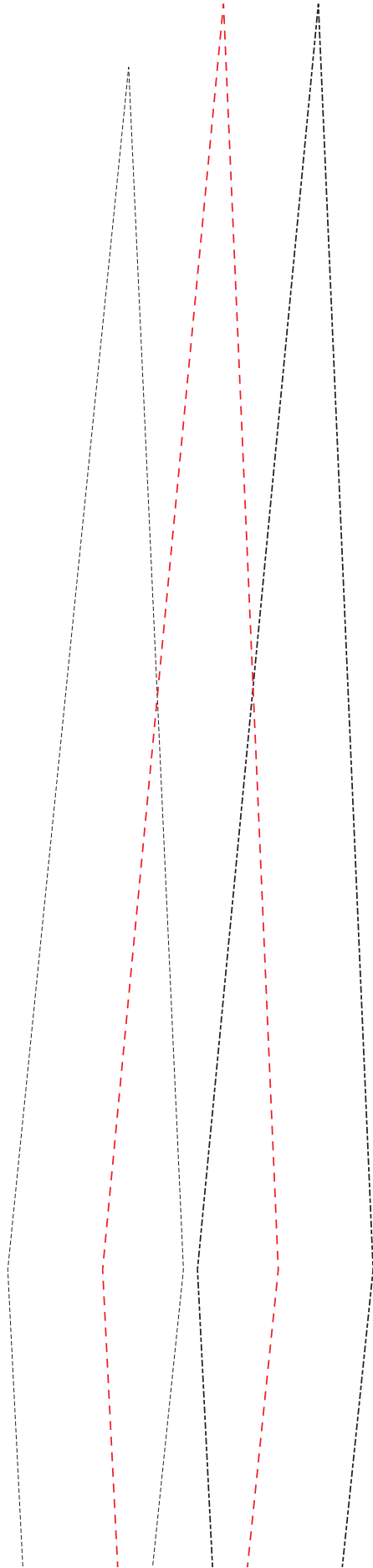


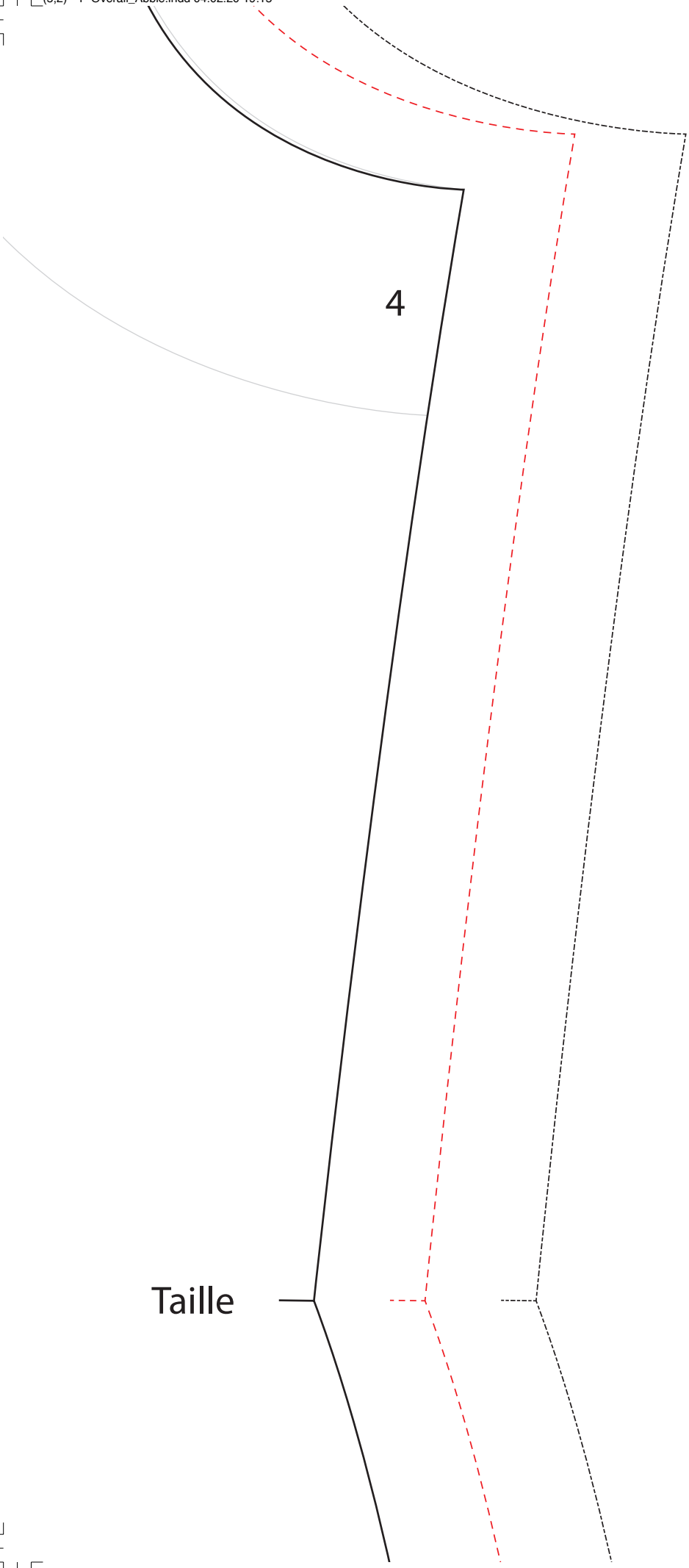
4

Taille



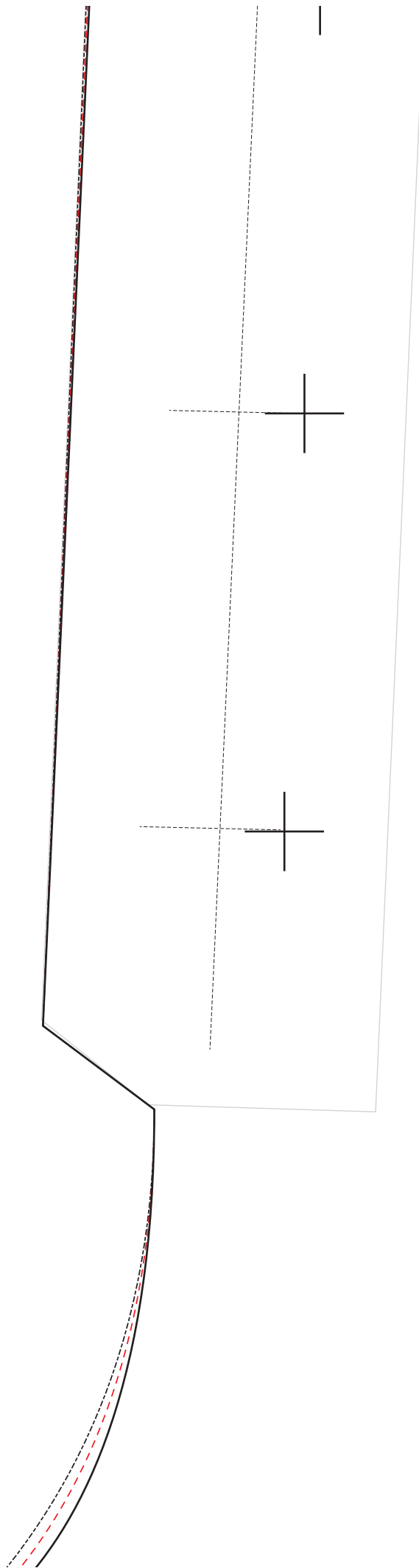
hintere Mitte

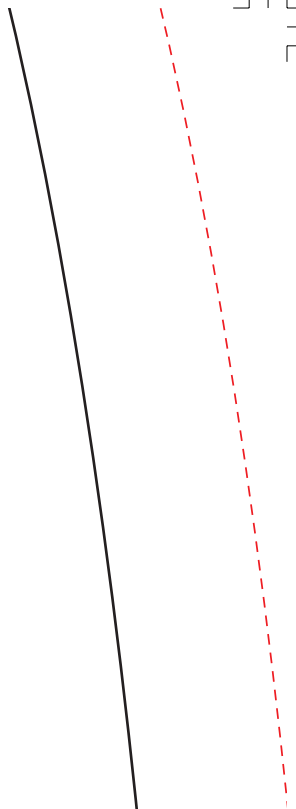
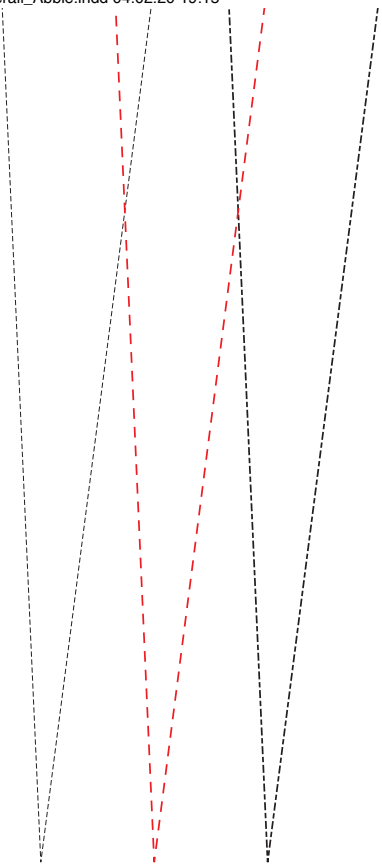




Taille

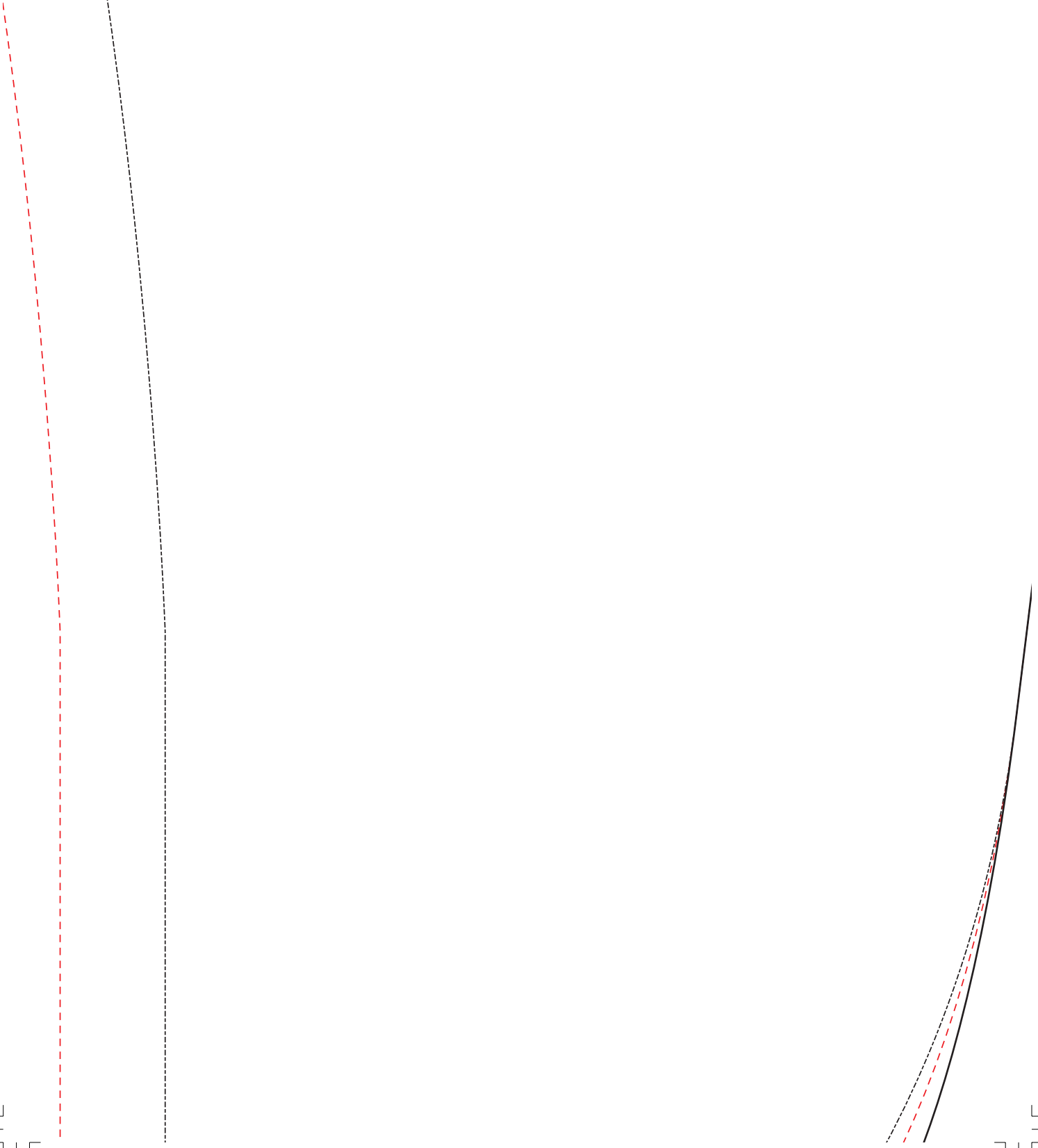
4





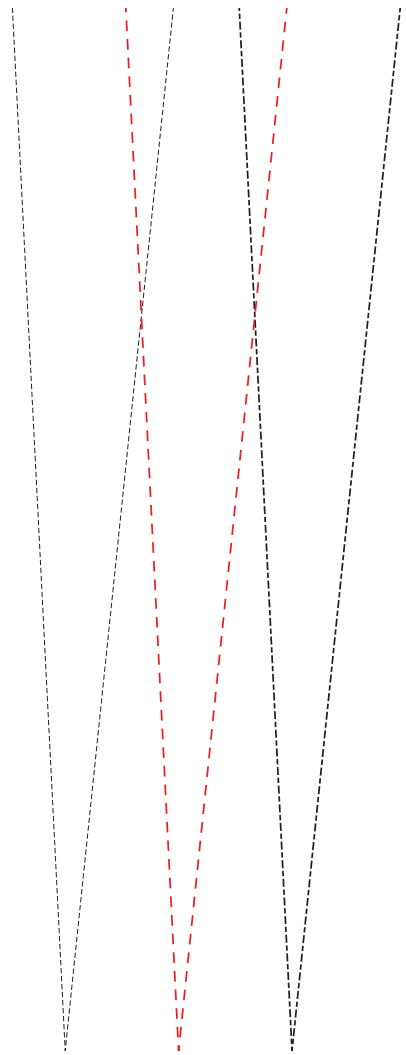
Fadenlauf

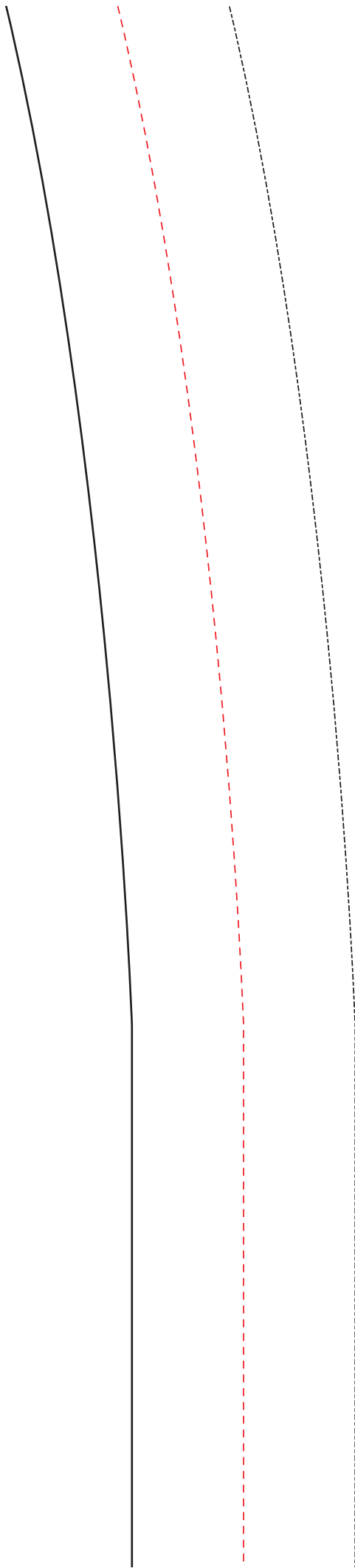


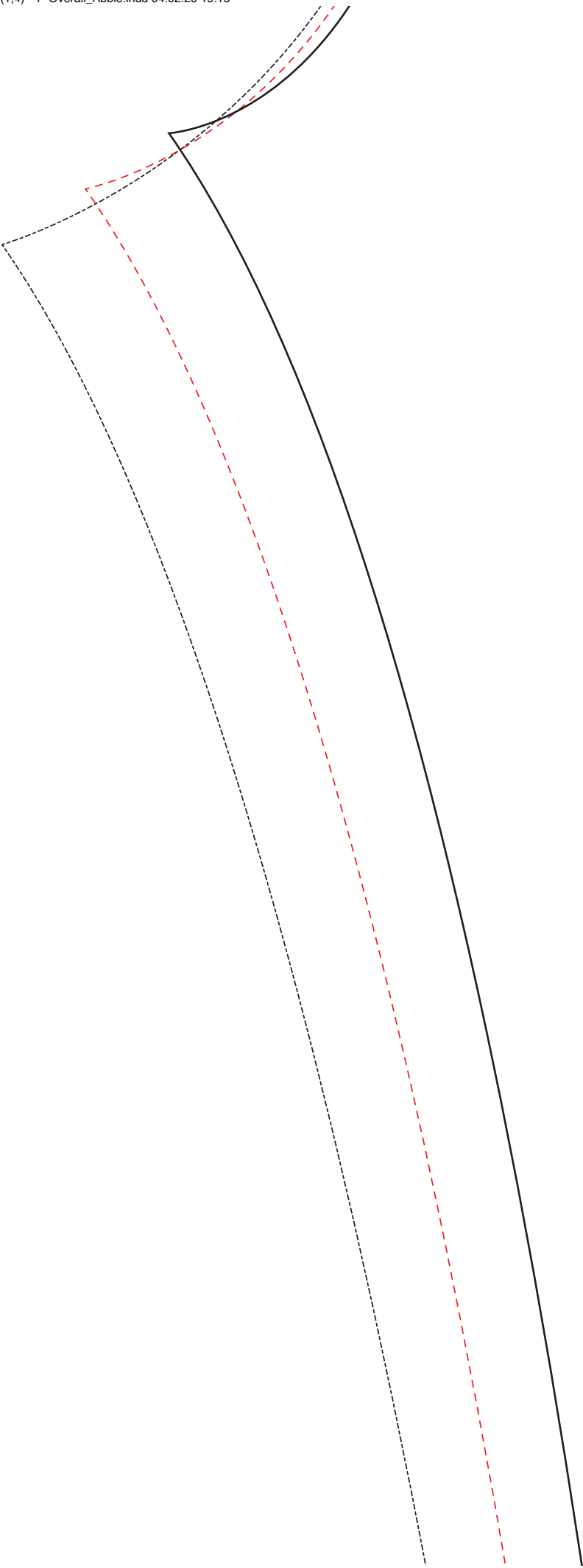




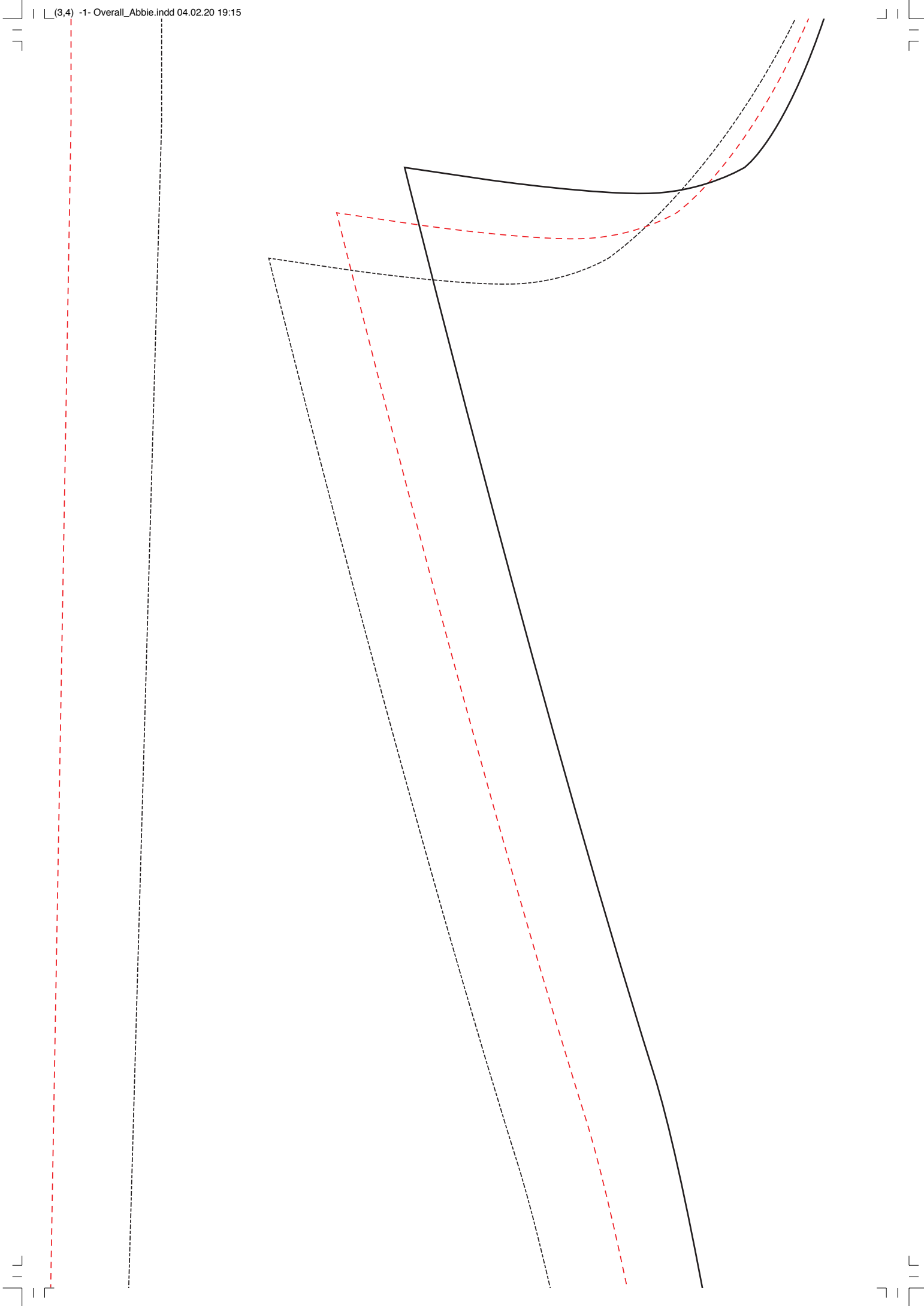
Fadenlauf





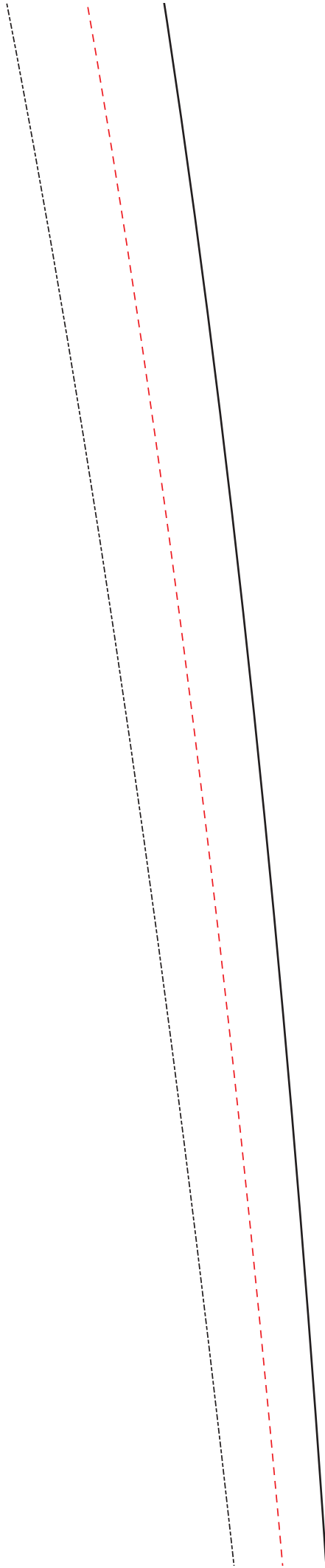


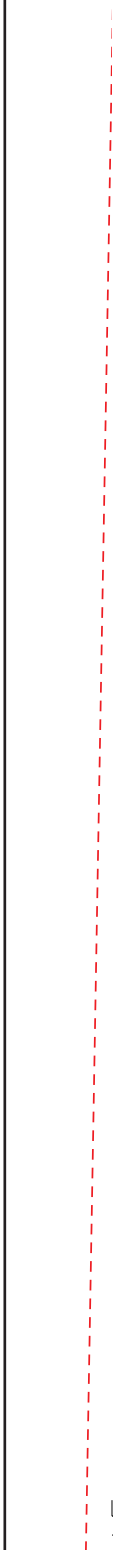


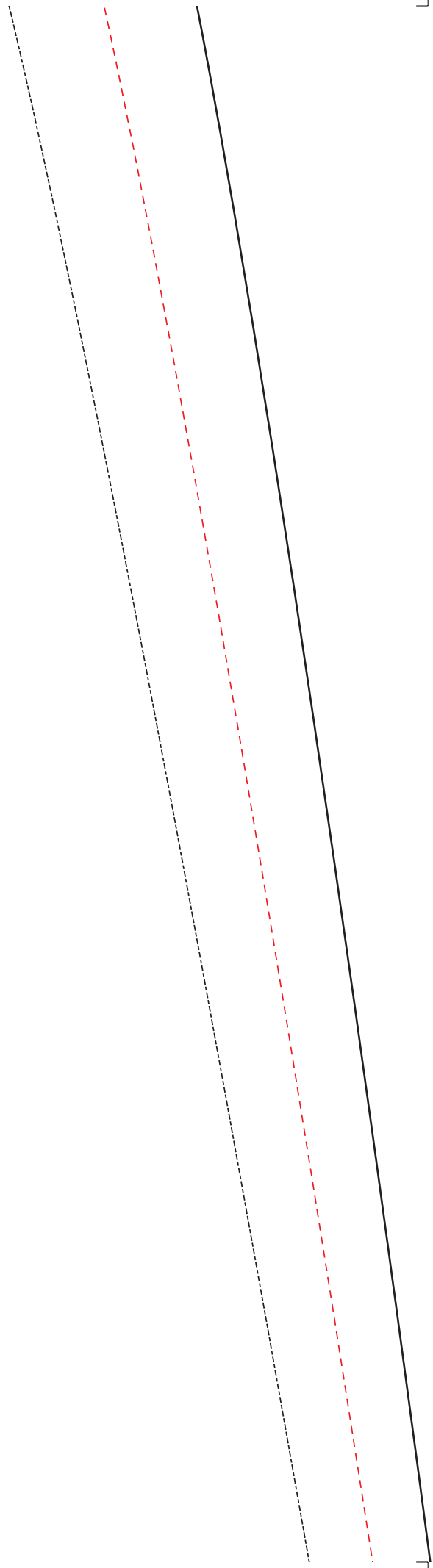






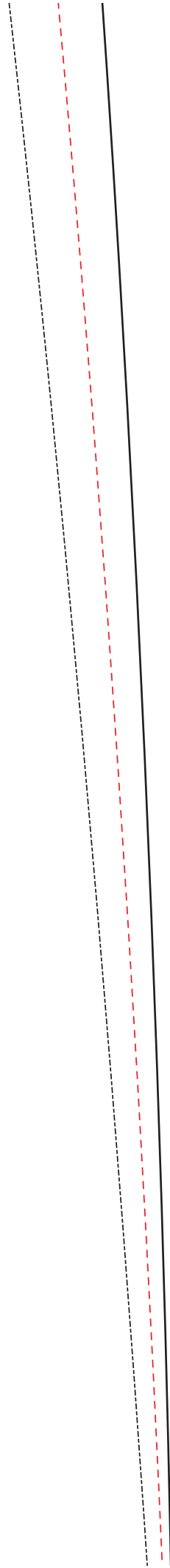




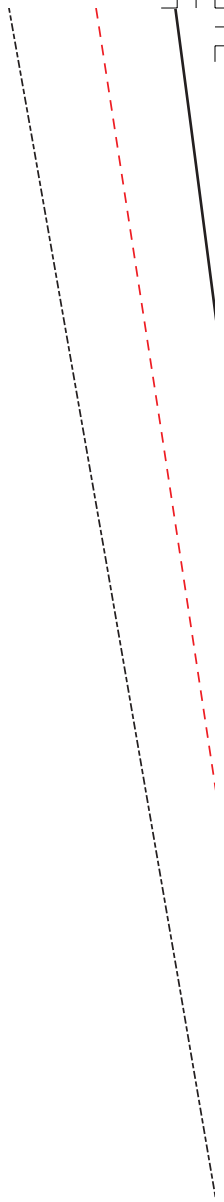


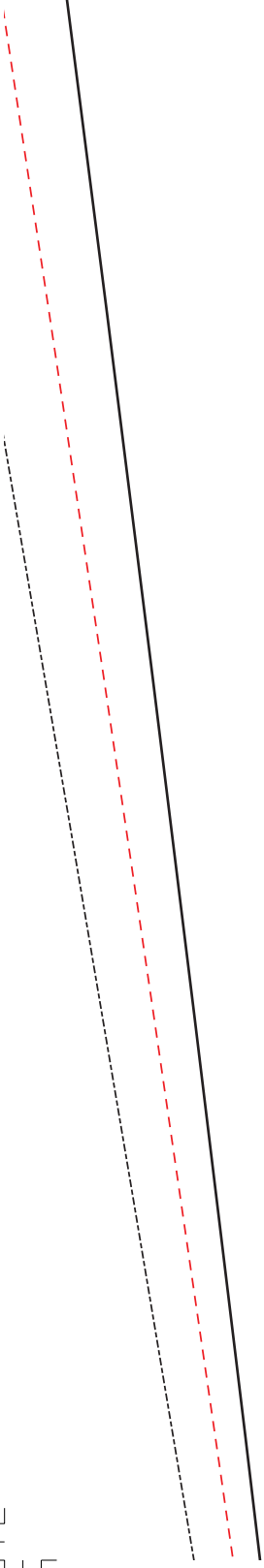


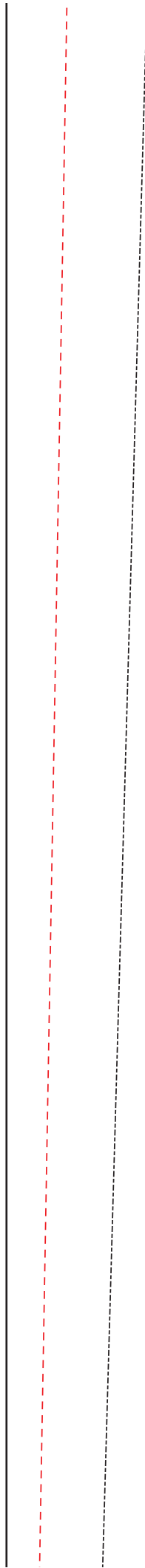


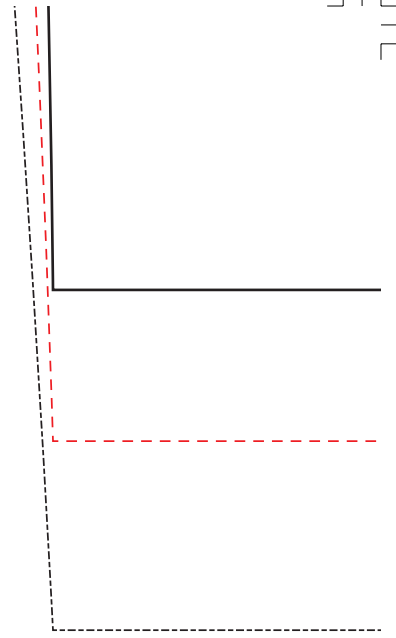












Vorderteil





Rückenteil



04.02.20 19:15 |