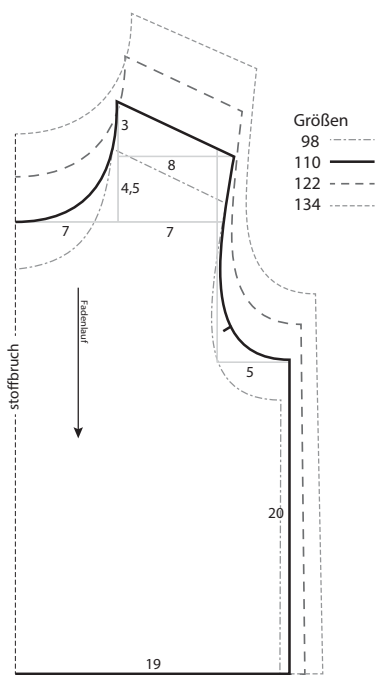


Rautenpulli (Kinder)

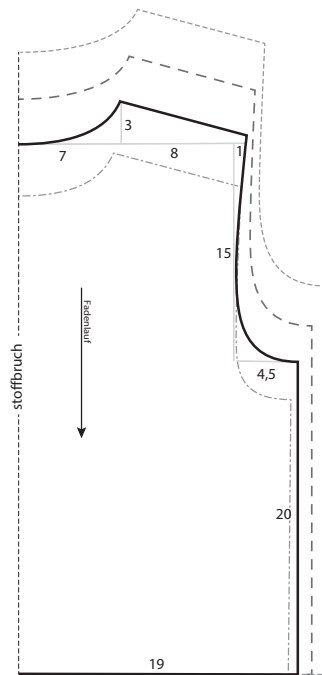
Kollektion N°10

98 /110/122/134

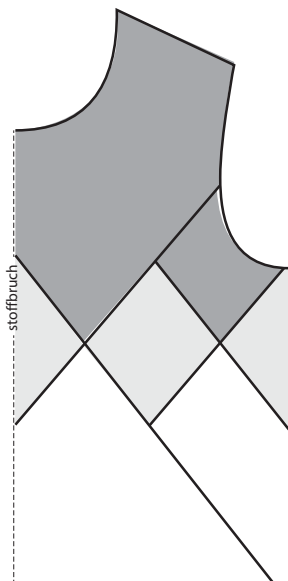
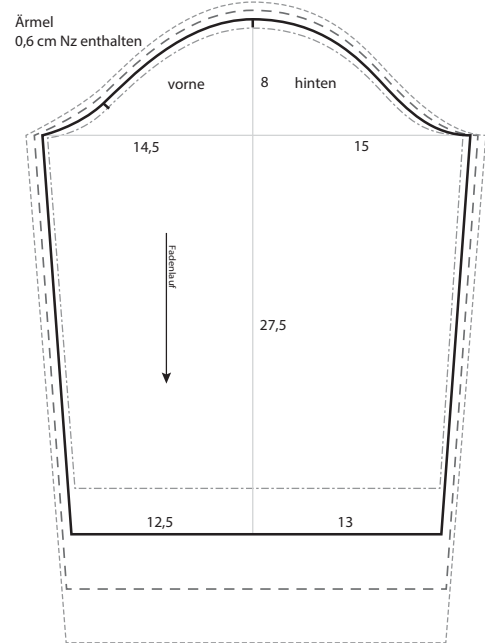
Drucken Sie die Schnittmusterseiten auf DIN A4 Papier aus. Achten Sie dabei darauf, dass das Druckergebnis in den Druckereinstellung nicht skaliert wird. Das Kontrollkästchen sollte genau 1 cm auf allen Seiten betragen.



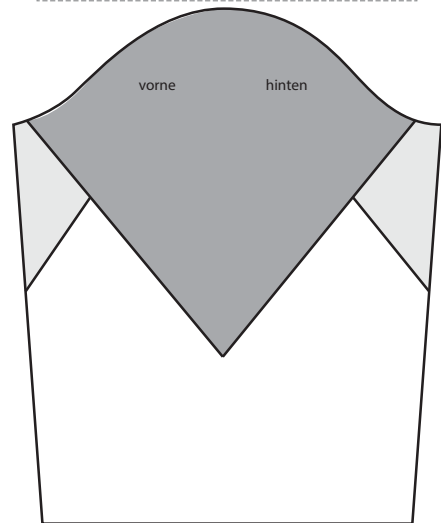
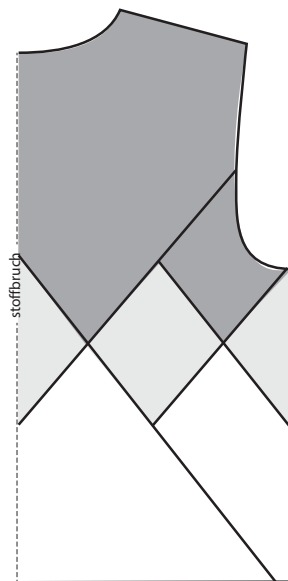
Vorderteil
0,6 cm Nz enthalten



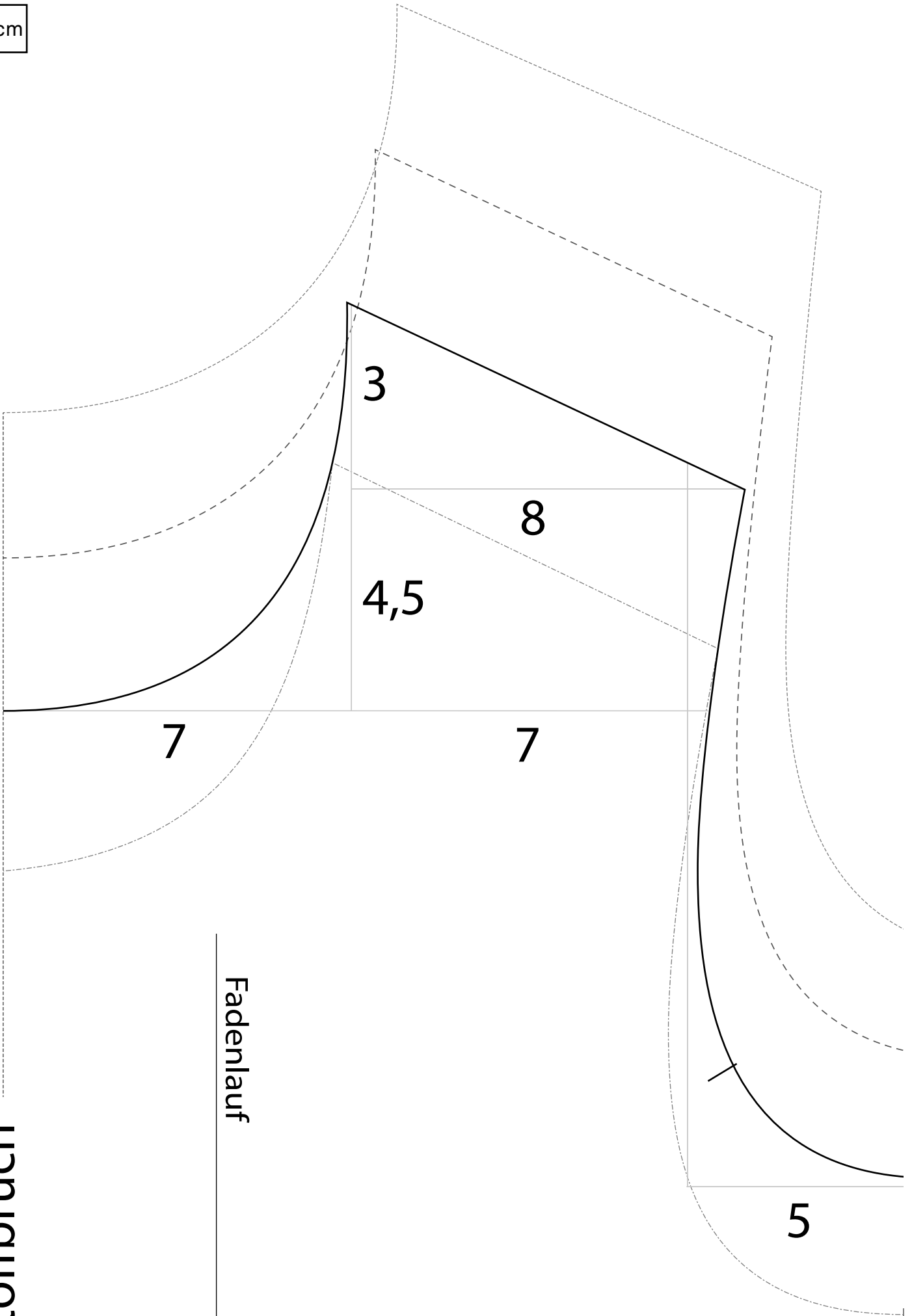
Rückenteil
0,6 cm Nz enthalten



Mustervorlage Größe 110



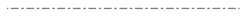
1cm





Größen

98



110



122

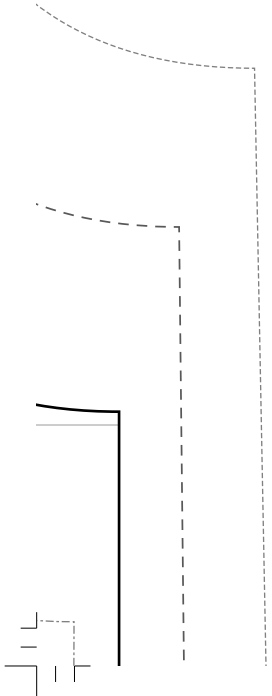
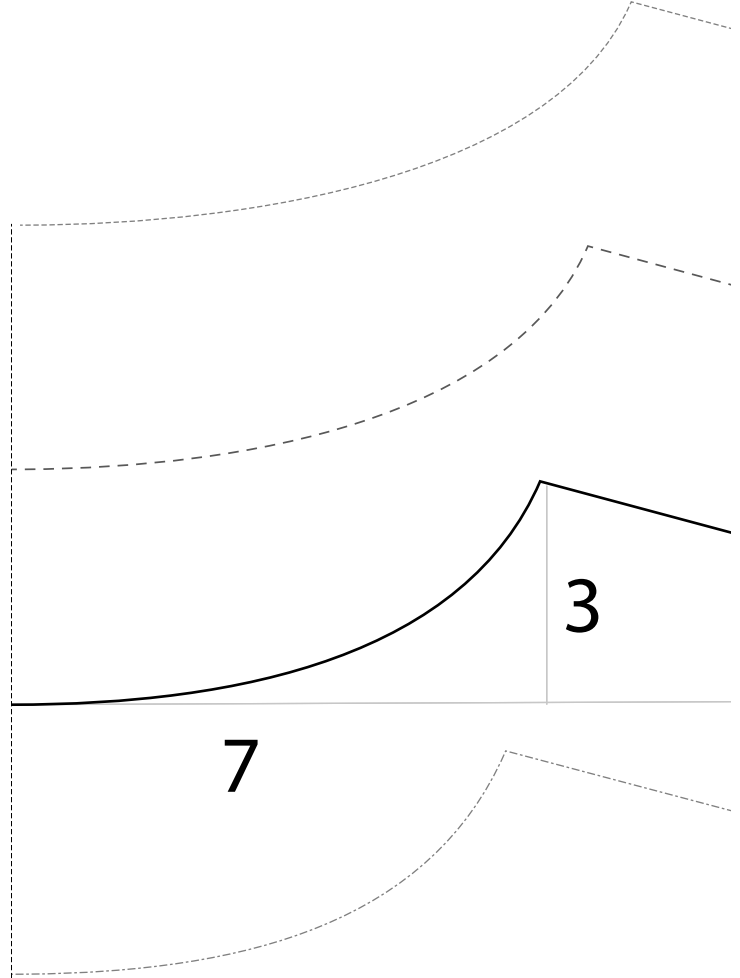


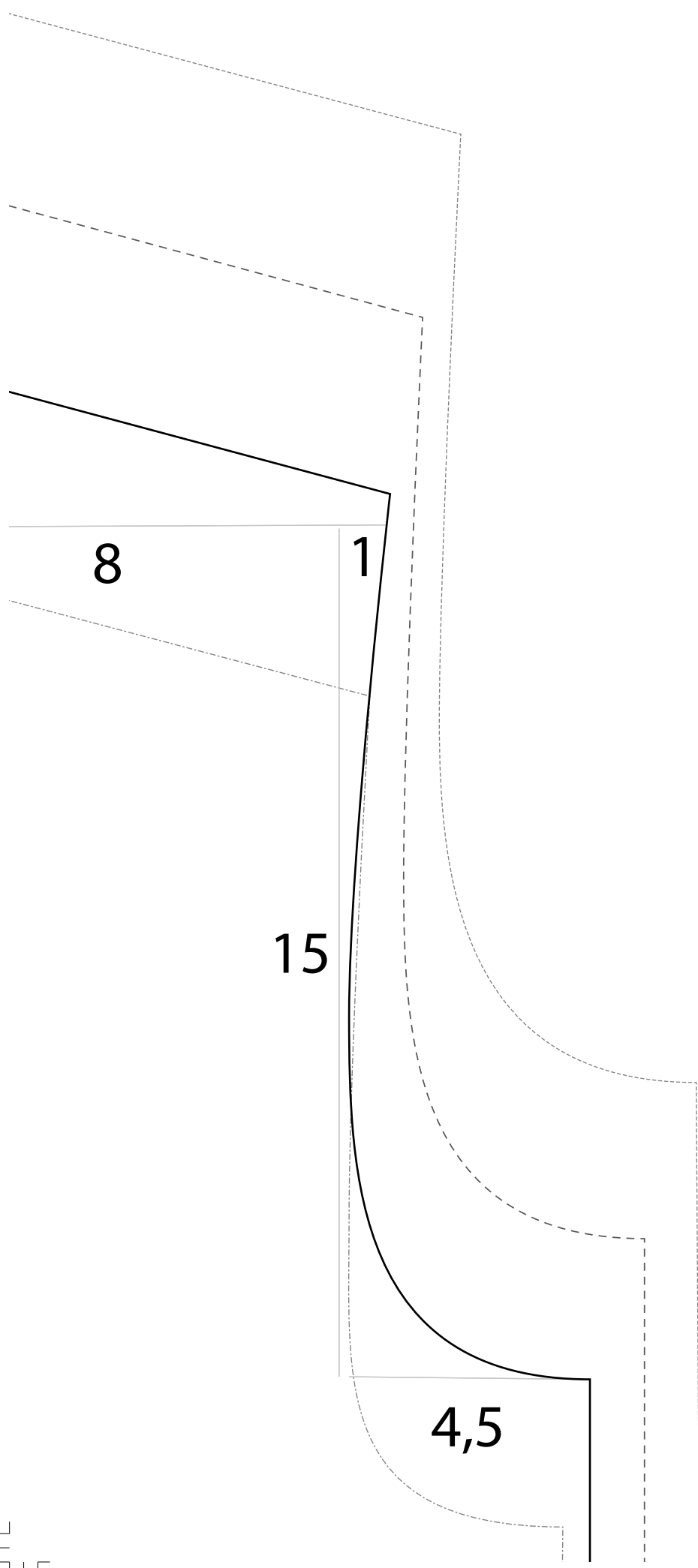
134



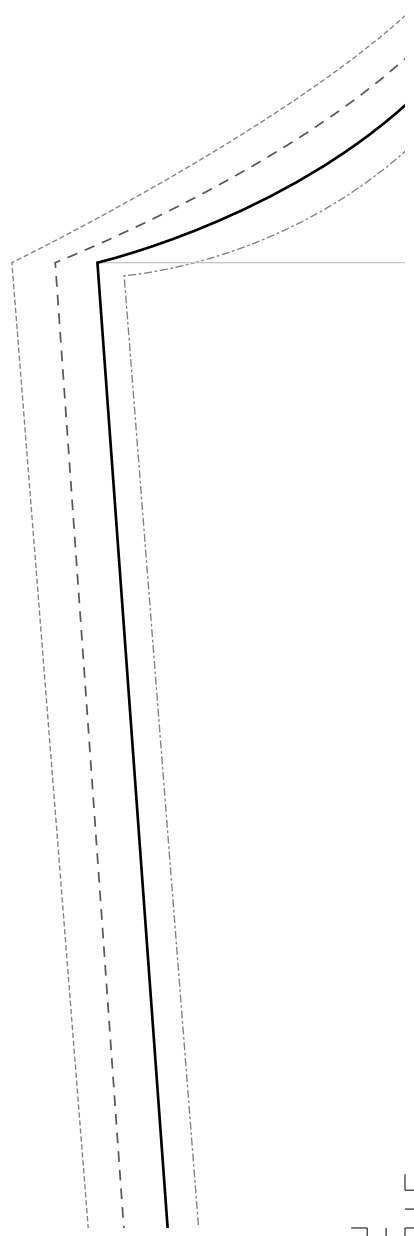
stoffbruch

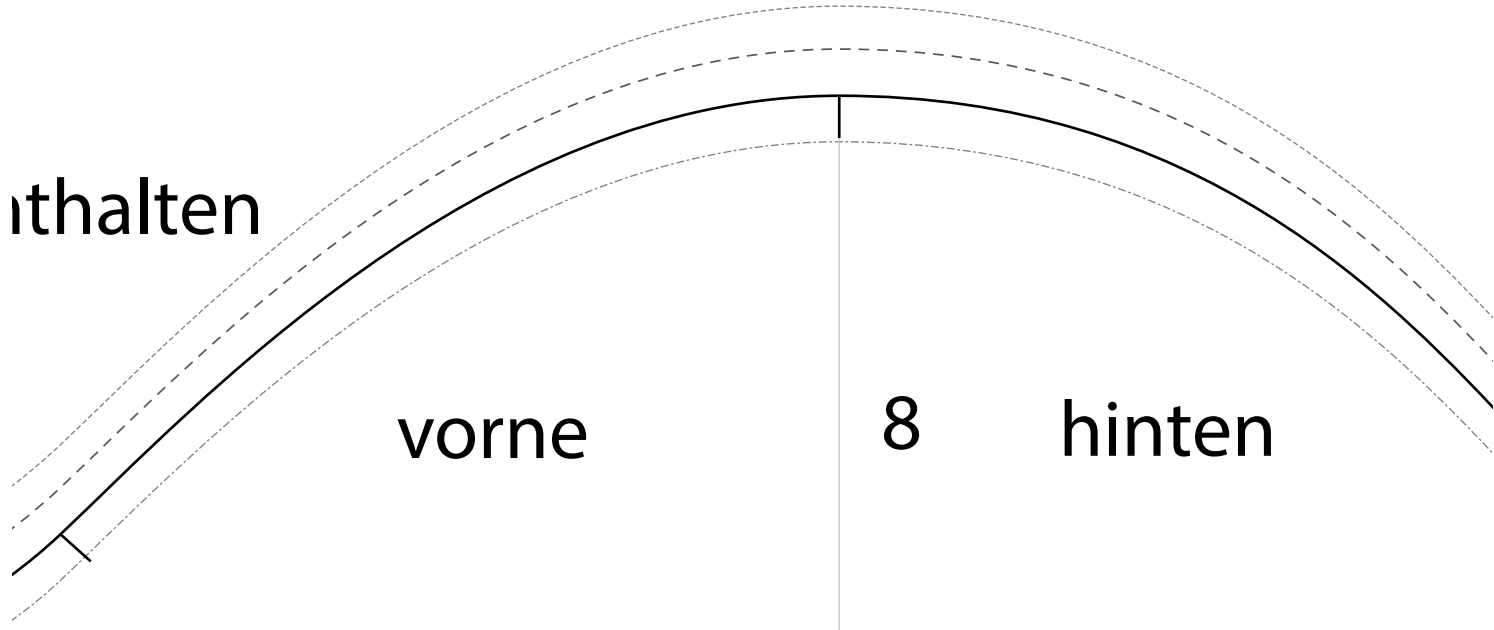
Fadenlauf





Ärmel
0,6 cm Nz ent





ithalten

vorne

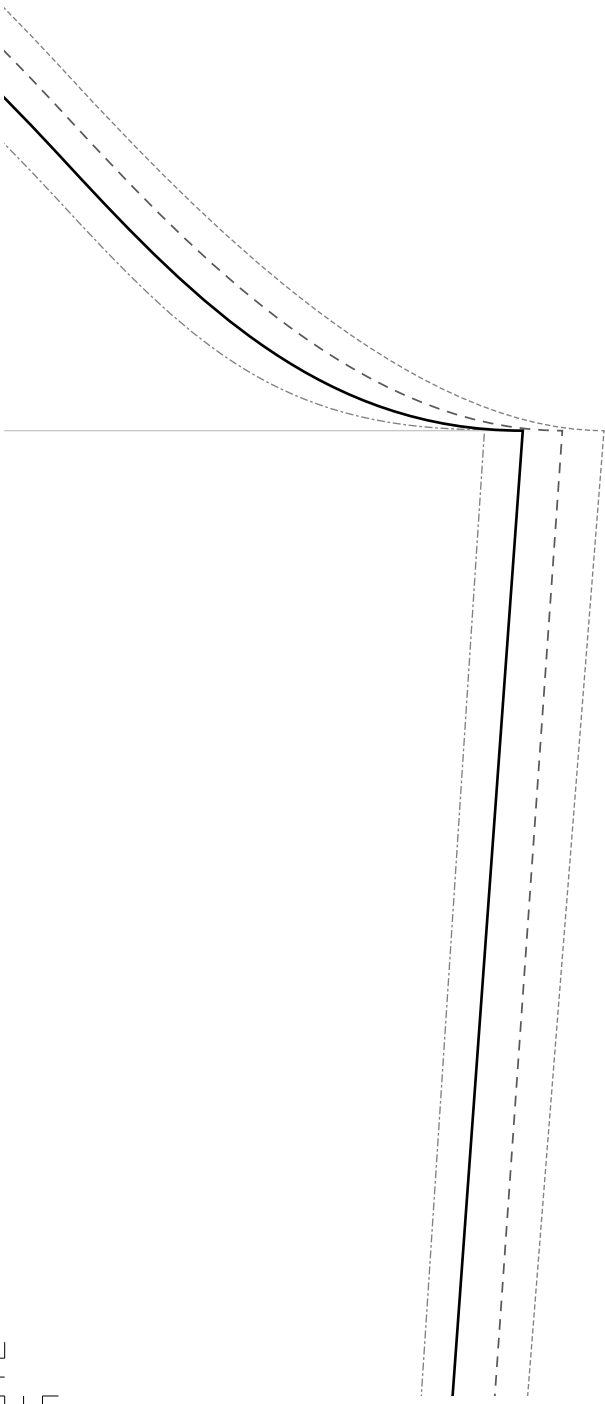
8

hinten

14,5

15

Fadenlauf



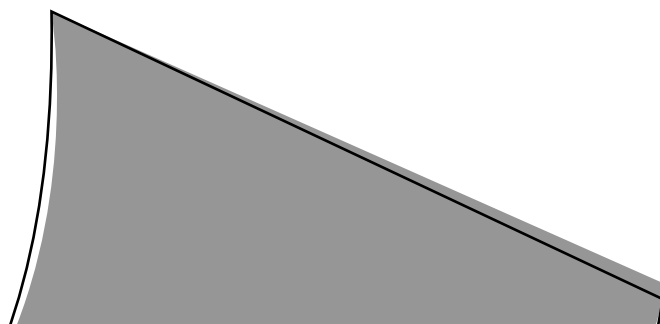
st



20

19

Vorderteil
0,6 cm Nz enthalten



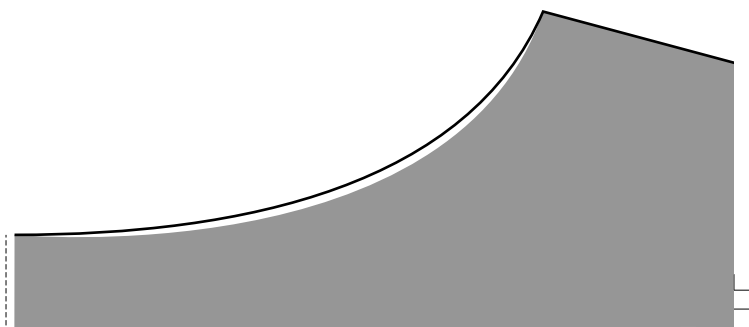
20

15



1

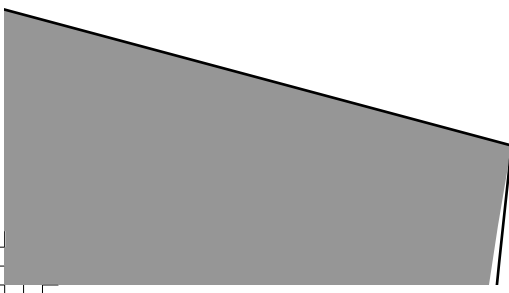
Rückenteil
0,6 cm Nz enthalten





20

19



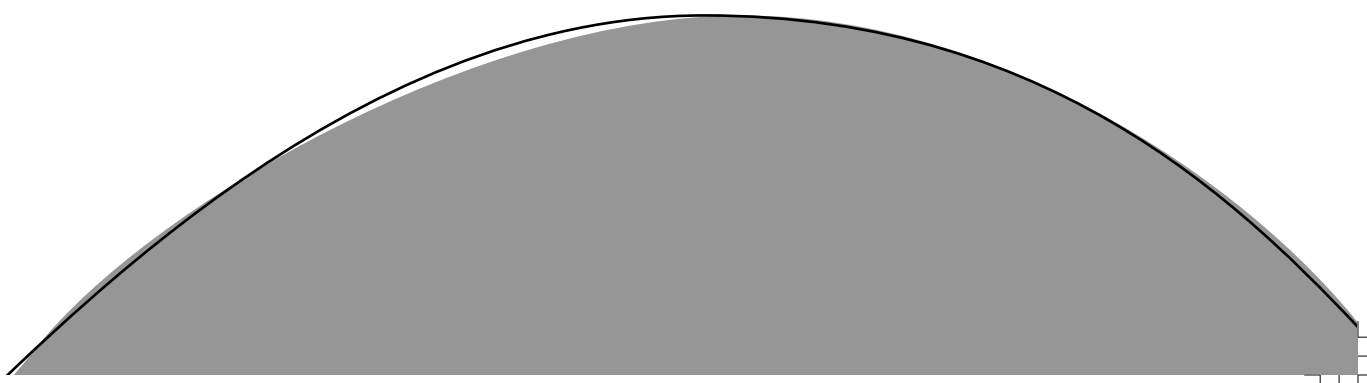


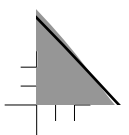
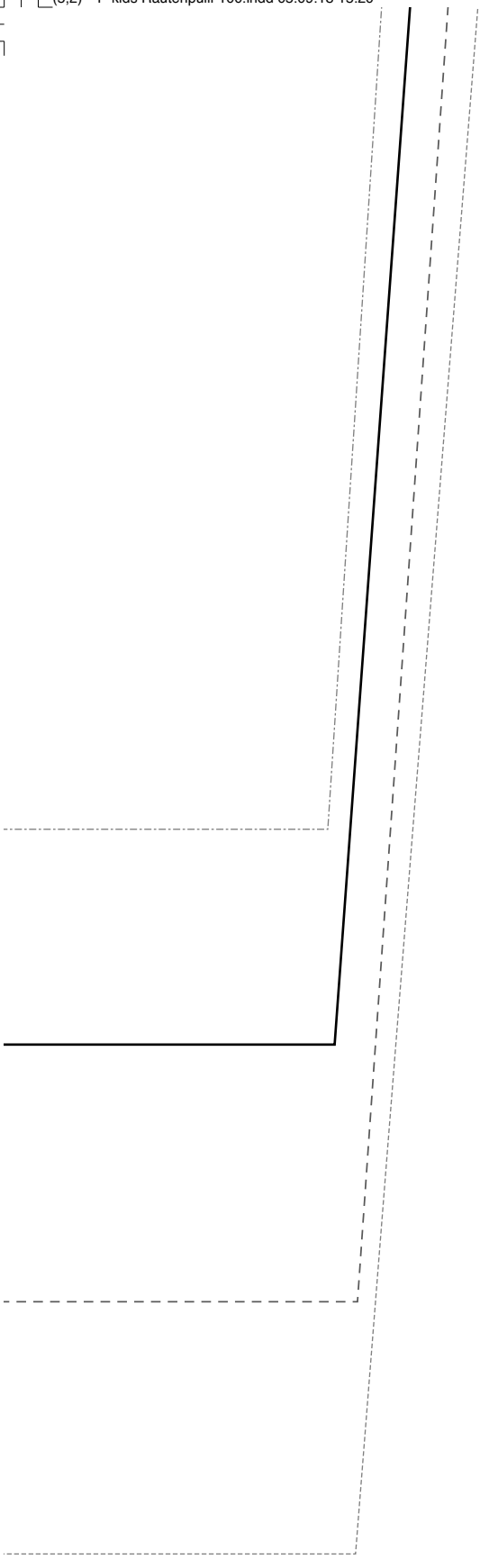
27,5



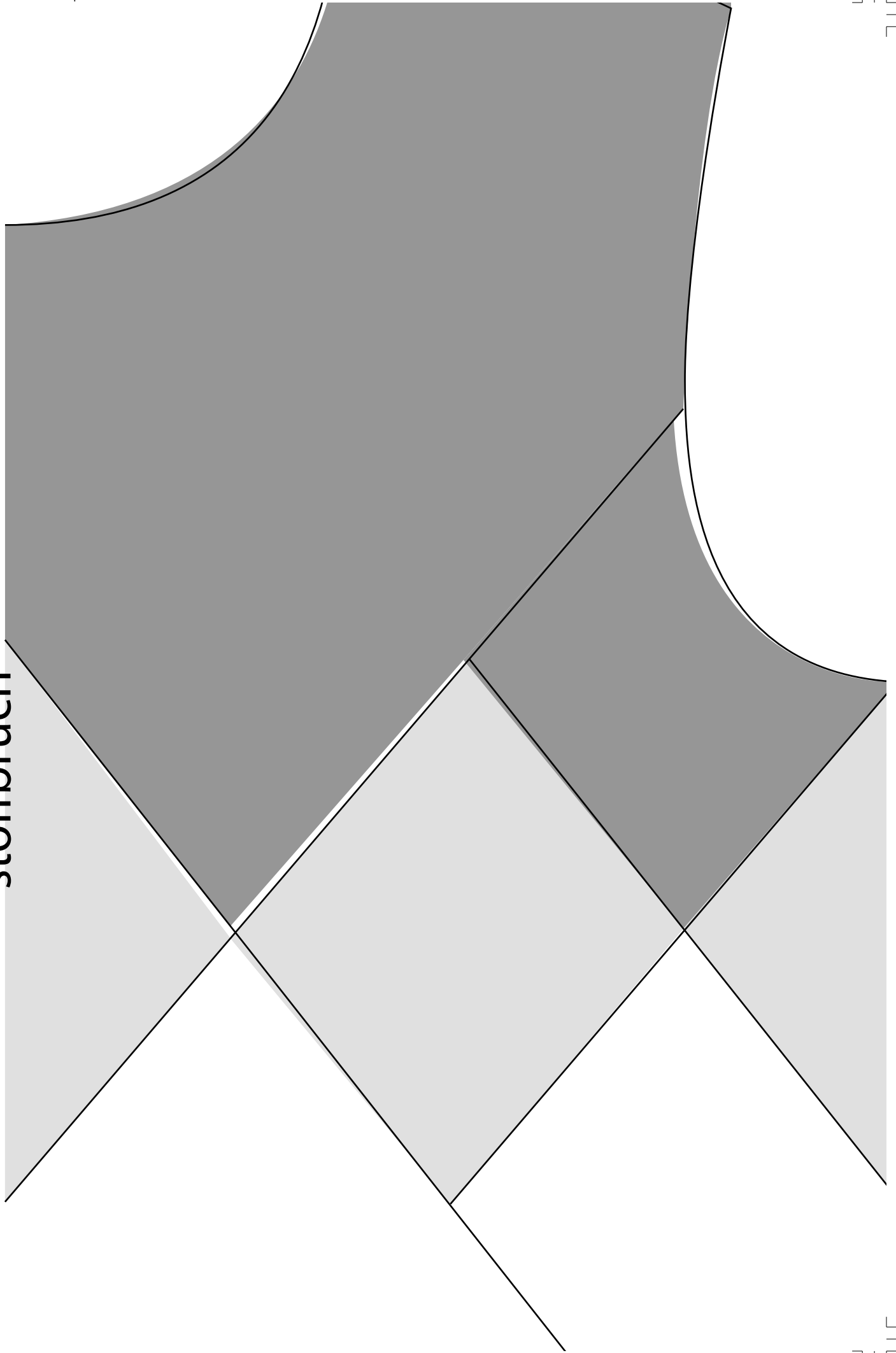
12,5

13



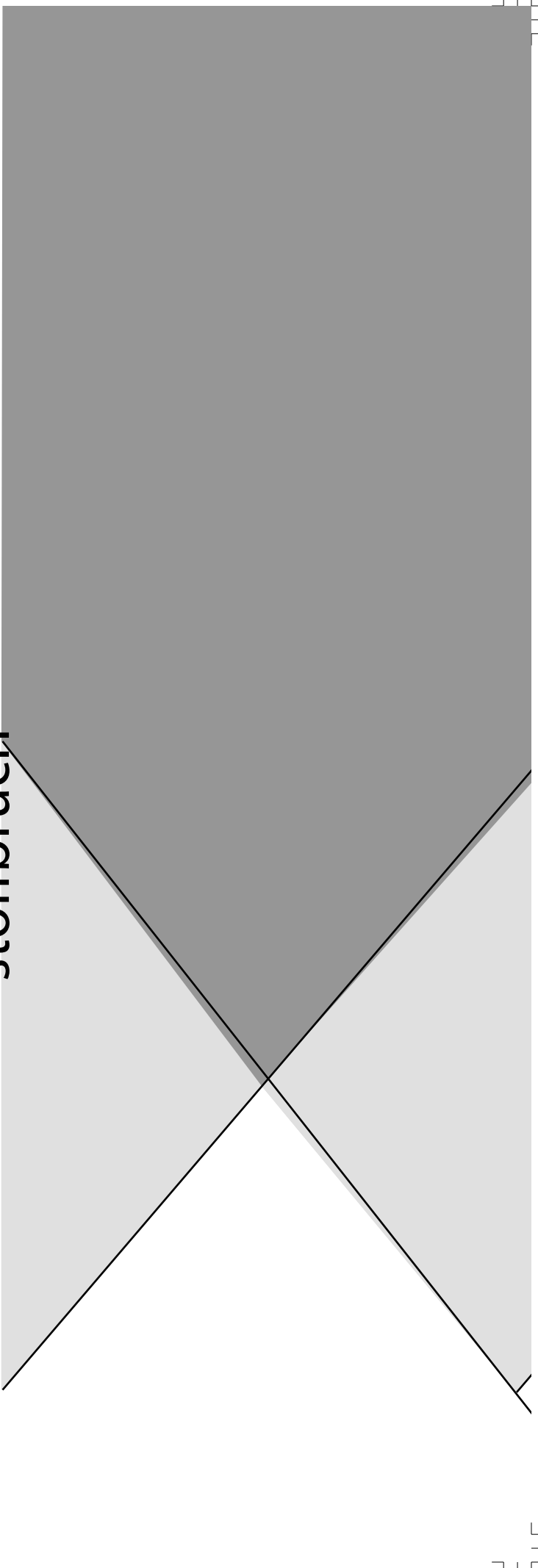


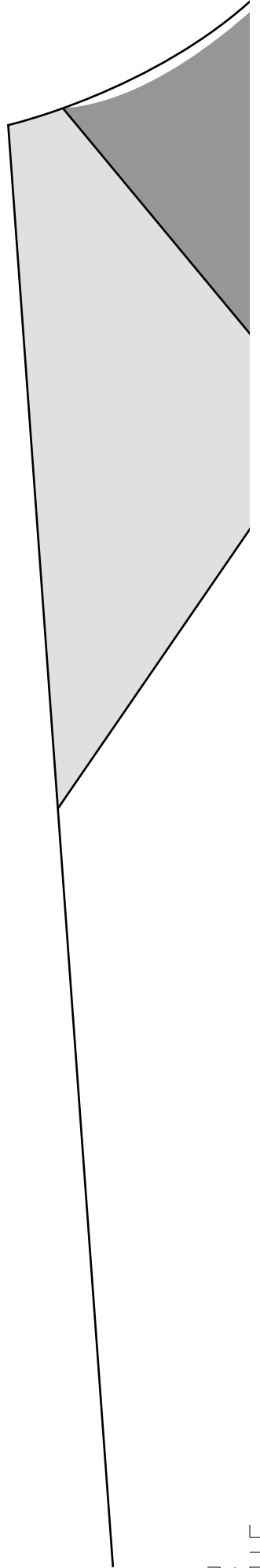
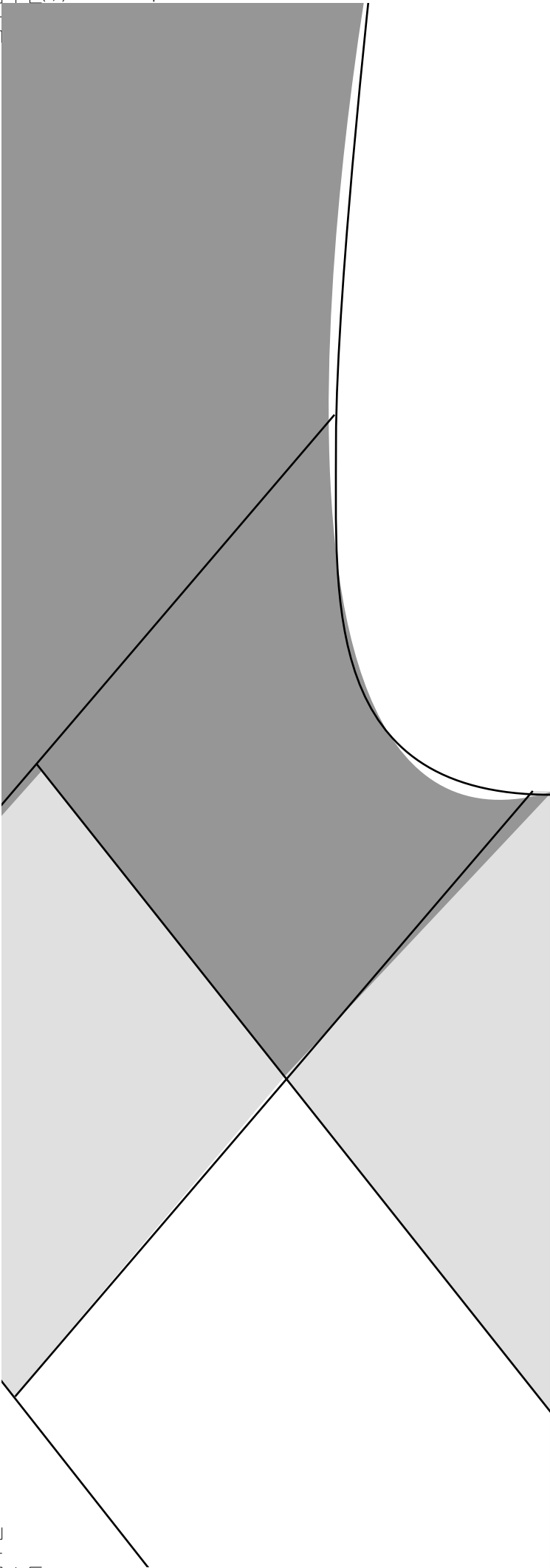
stoffbruch





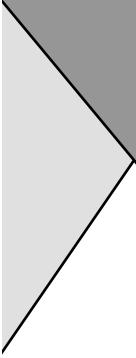
stoffbruch

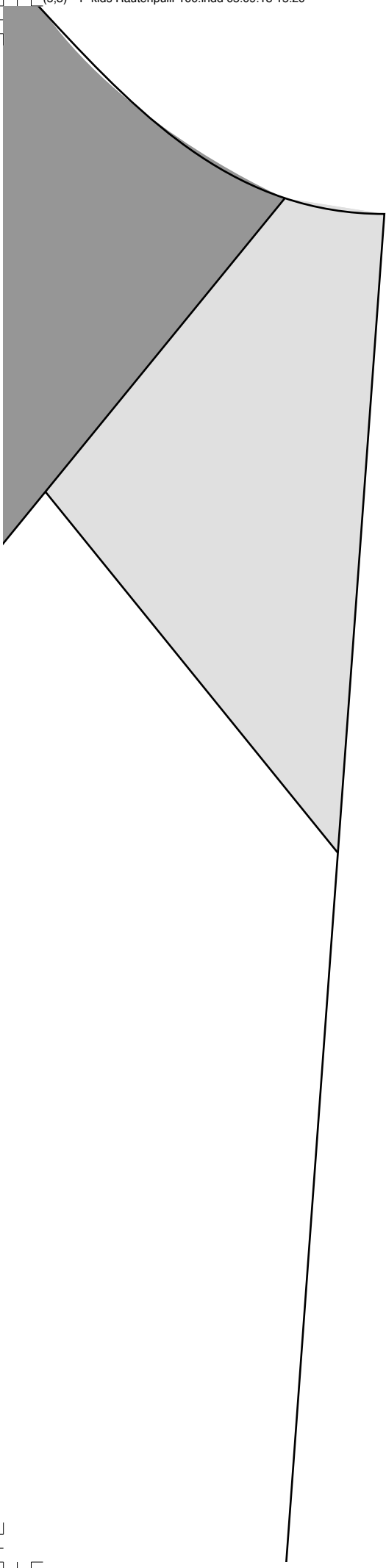




vorne

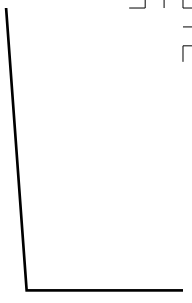
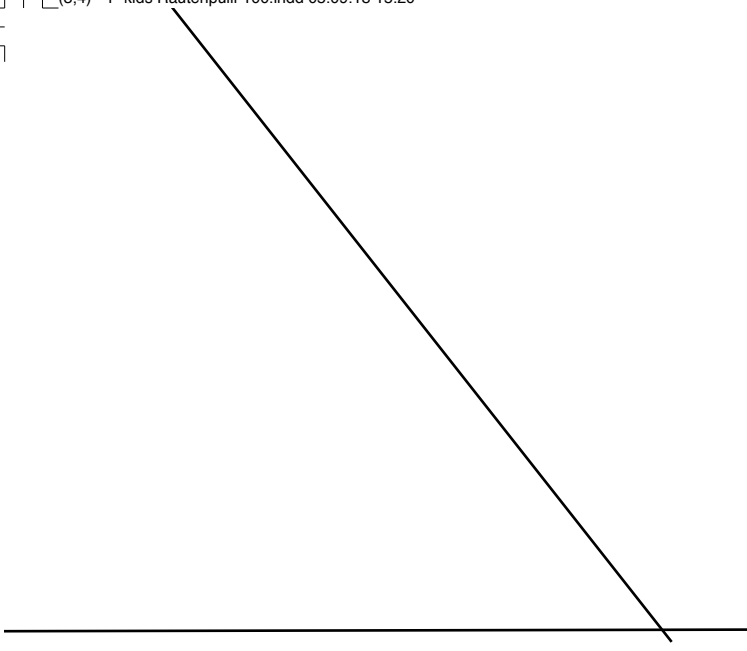
hinten



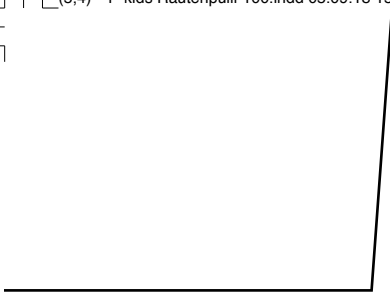


Mustervorlage Größe 110









05.09.18 15:20