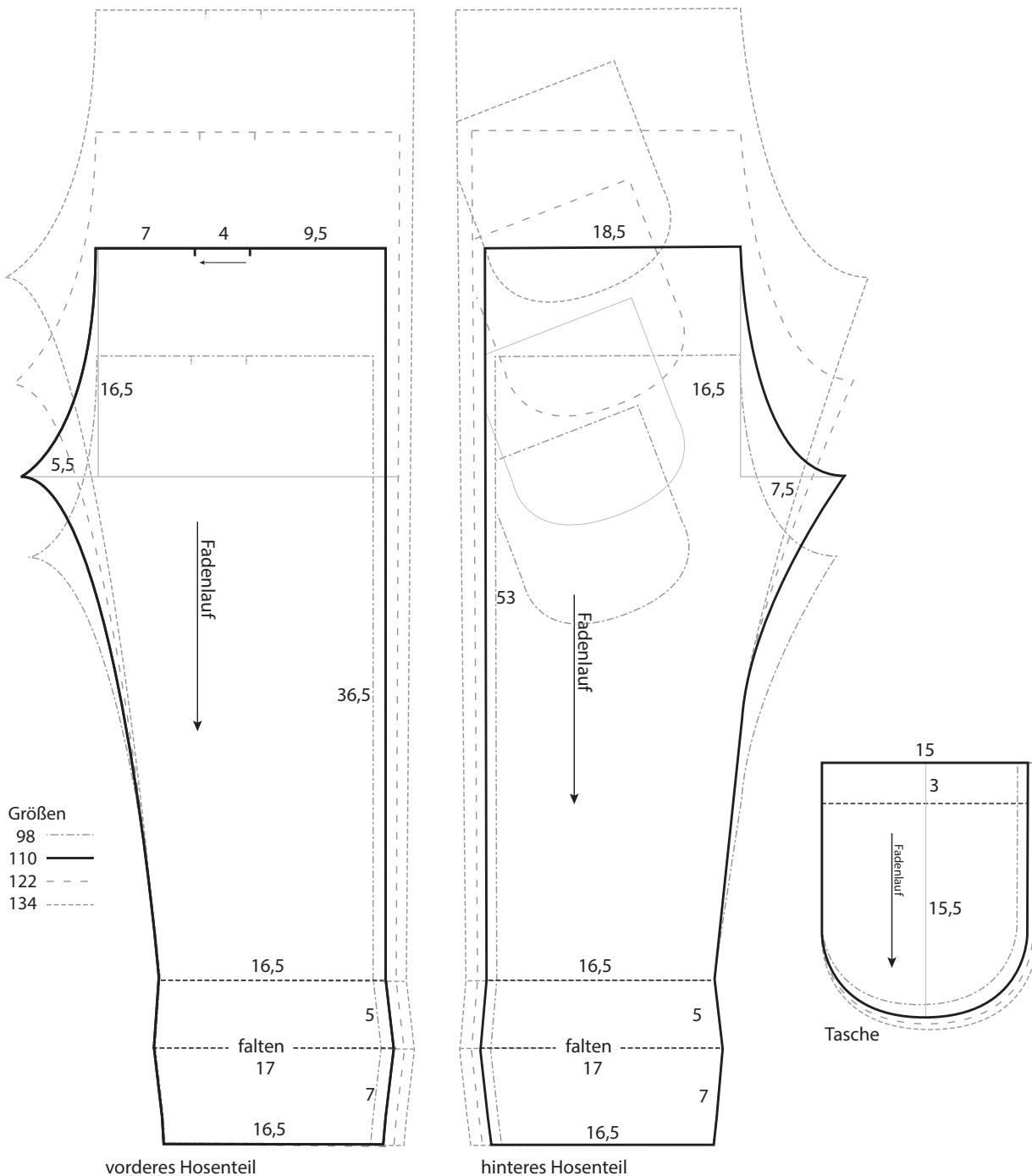
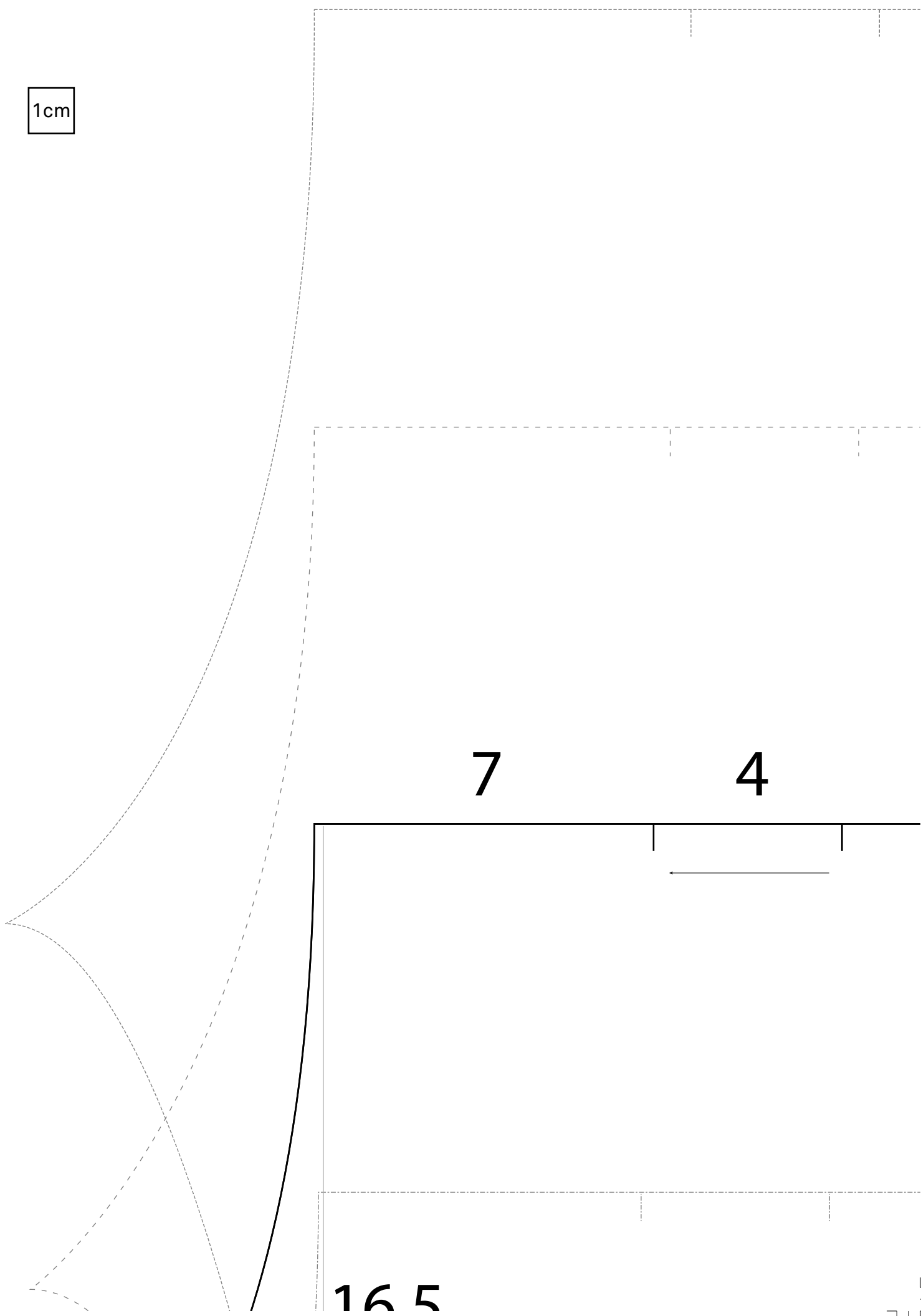


Drucken Sie die Schnittmusterseiten auf DIN A4 Papier aus. Achten Sie dabei darauf, dass das Druckergebnis in den Druckereinstellung nicht skaliert wird. Das Kontrollkästchen sollte genau 1 cm auf allen Seiten betragen.





1cm

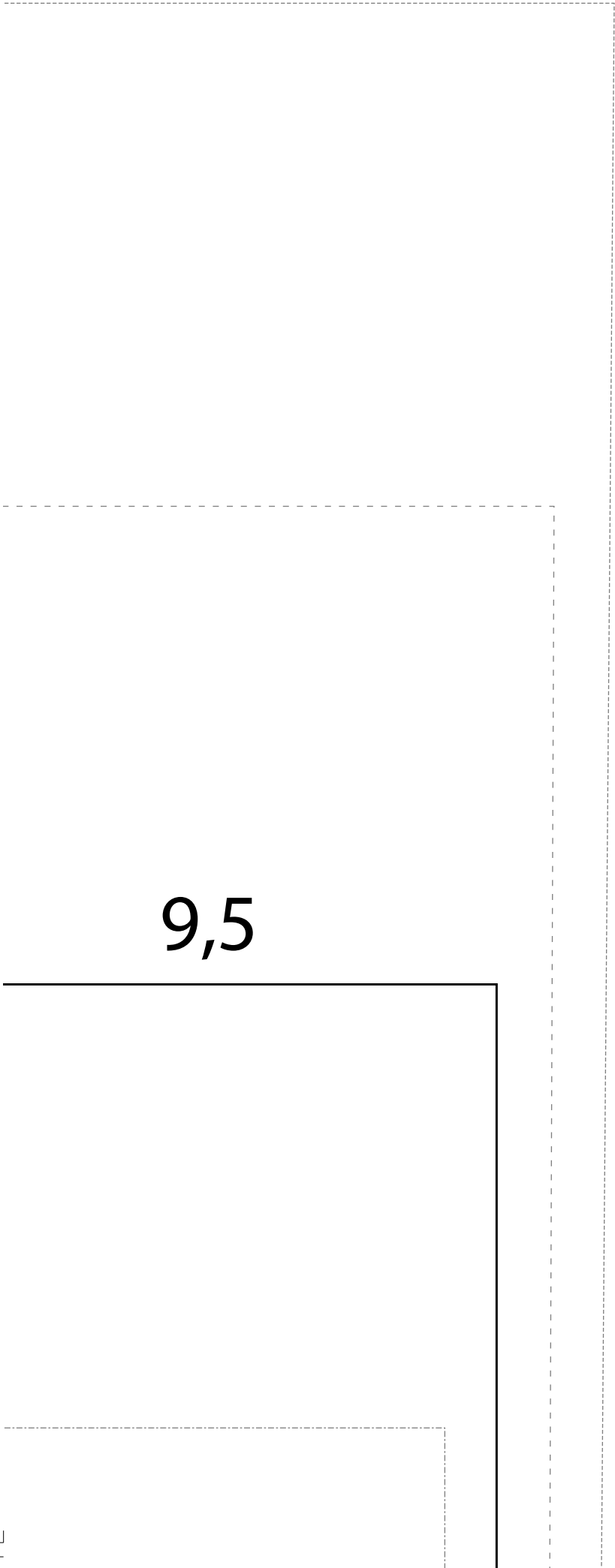


7

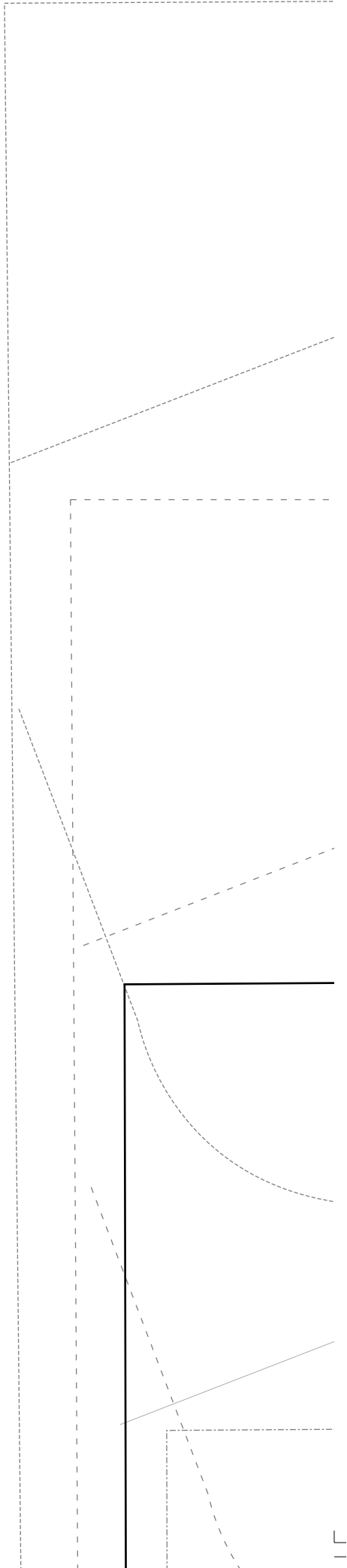
4

16.5





9,5





**18,5**

**16 5**

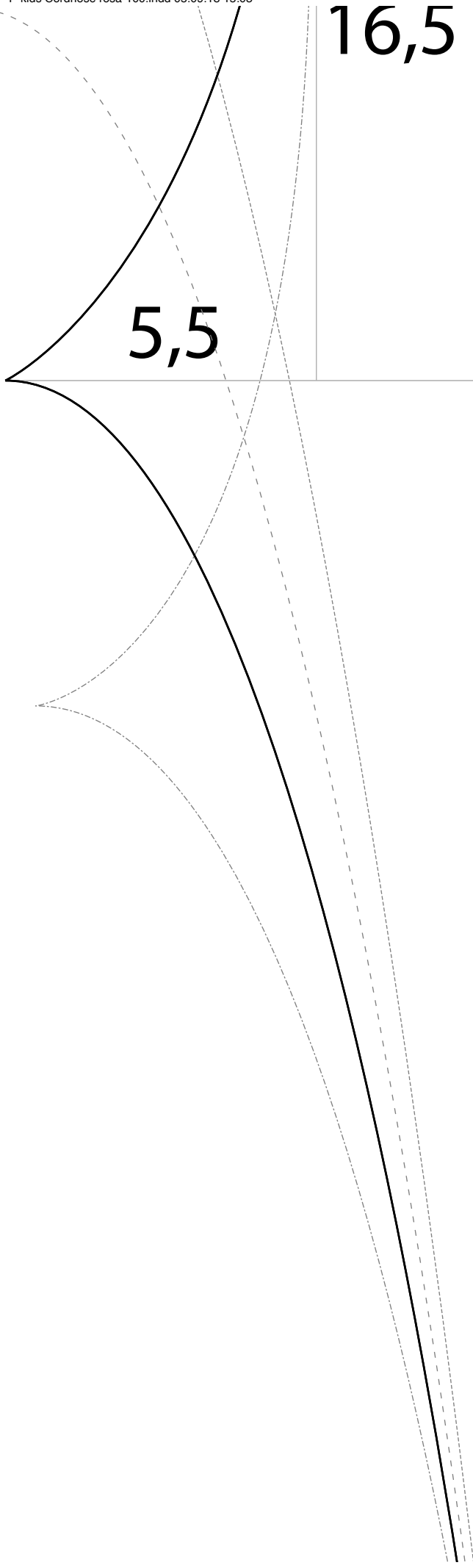




16,5

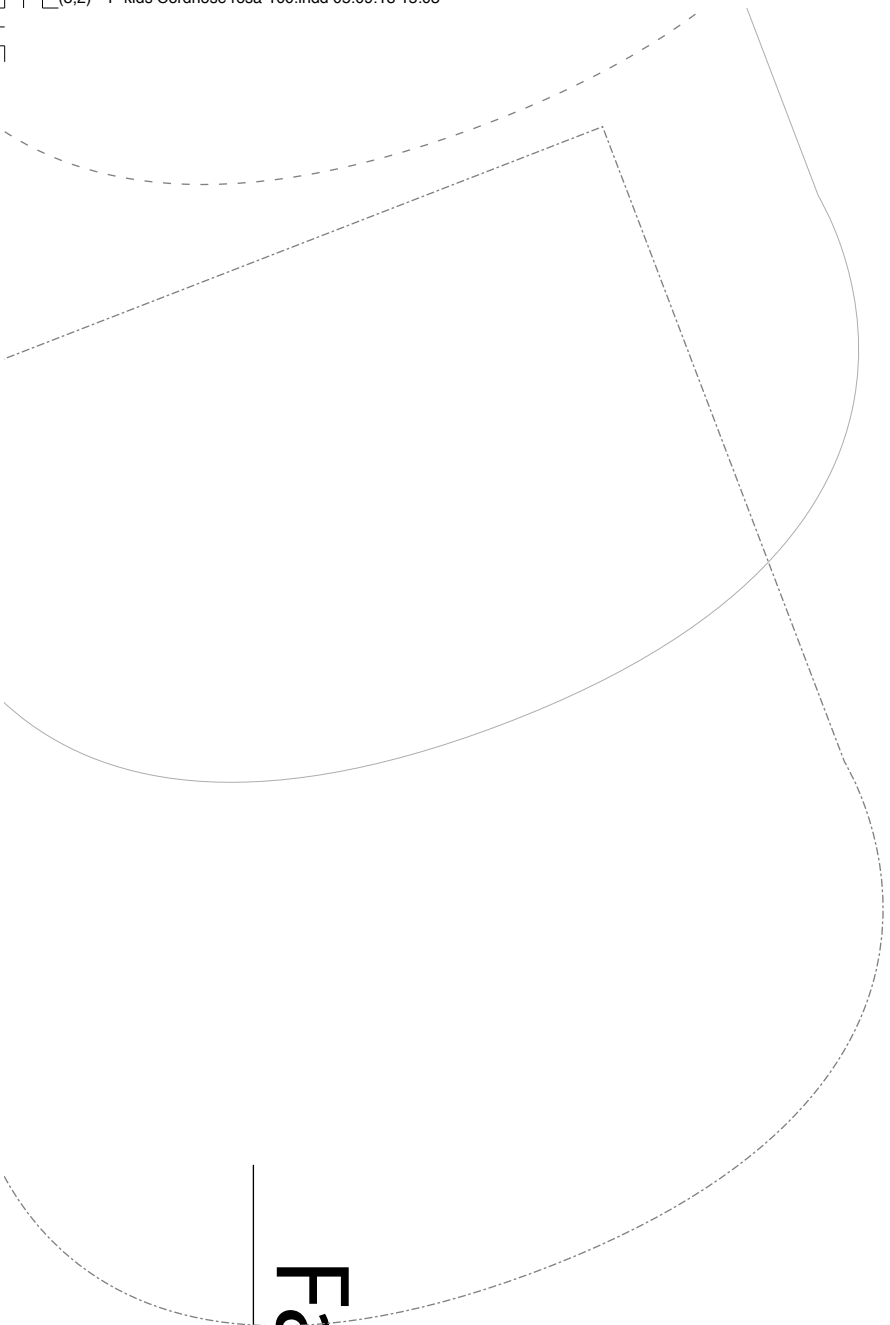
5,5

Fadenlauf

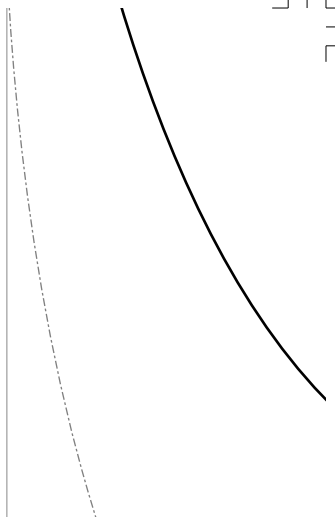


36,5

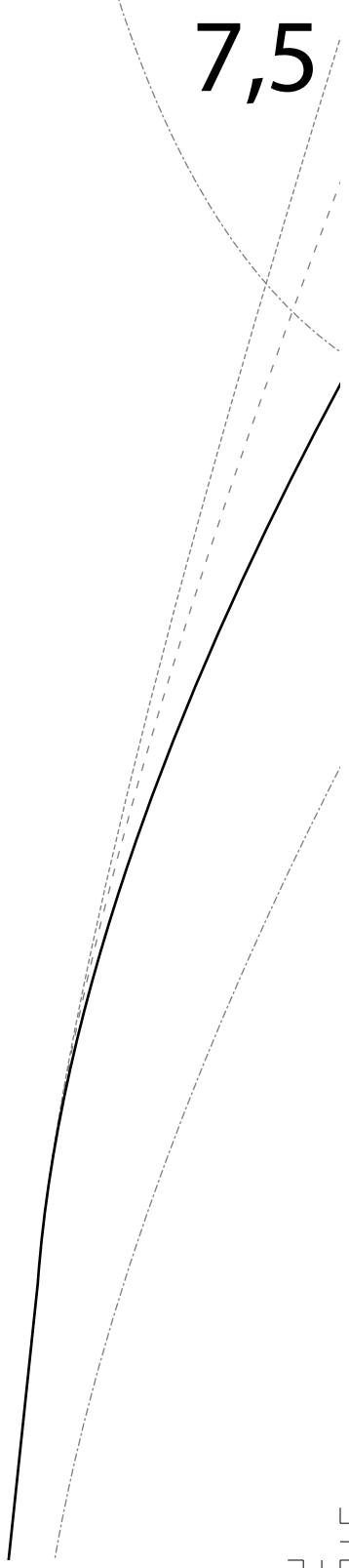
53



16,5



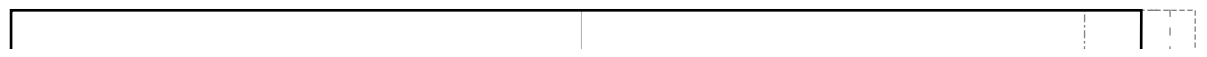
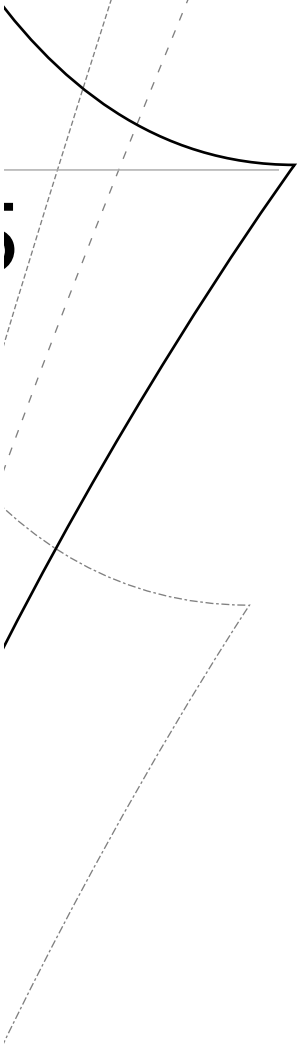
7,5



Fadenlauf

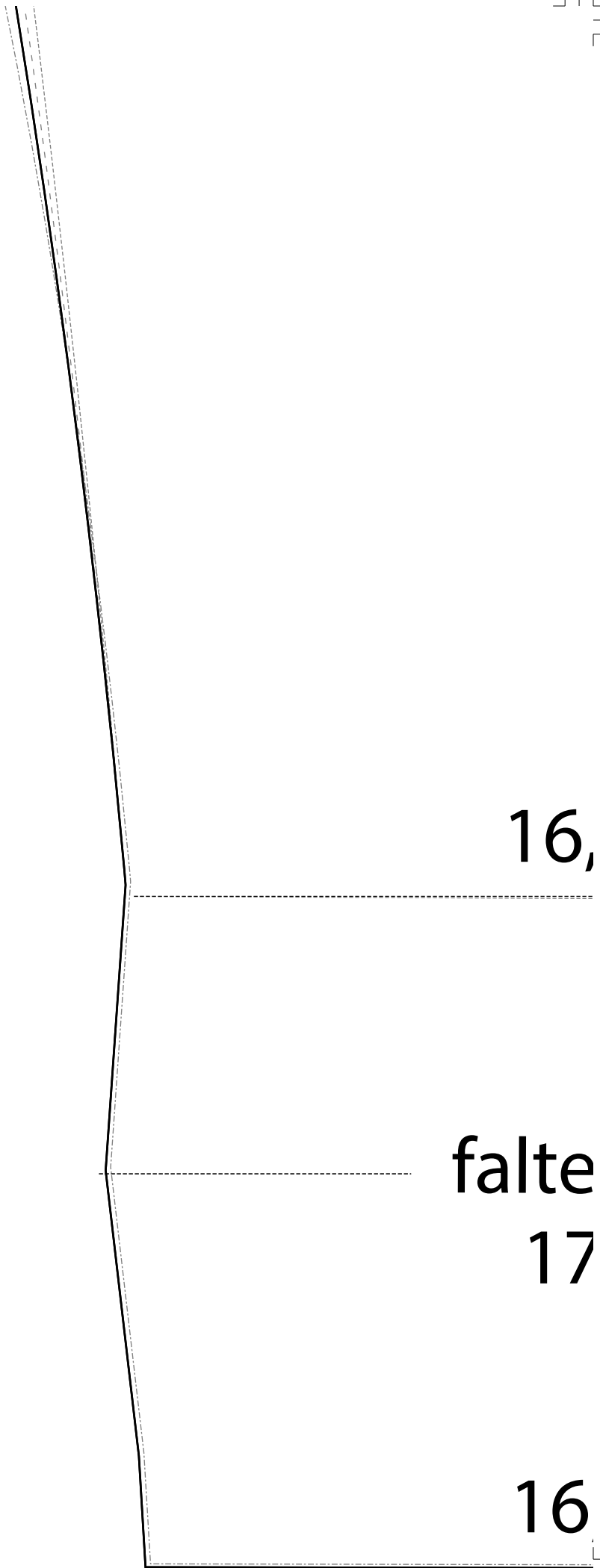






# Größen

- 98
- 110
- 122
- 134





5,5

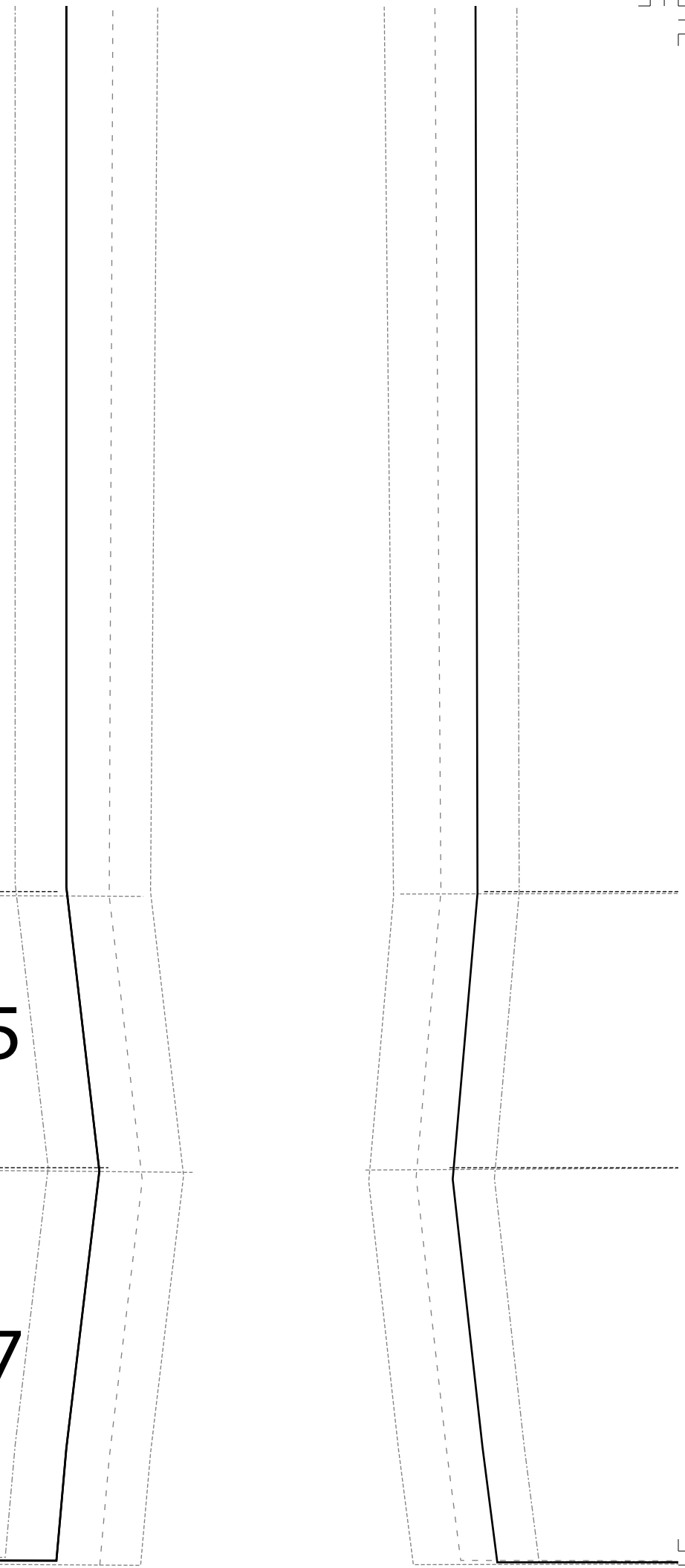
en

7

5,5

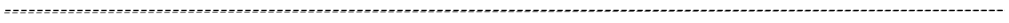
5

7



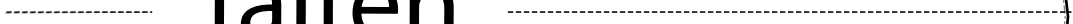


16,5



5

falten

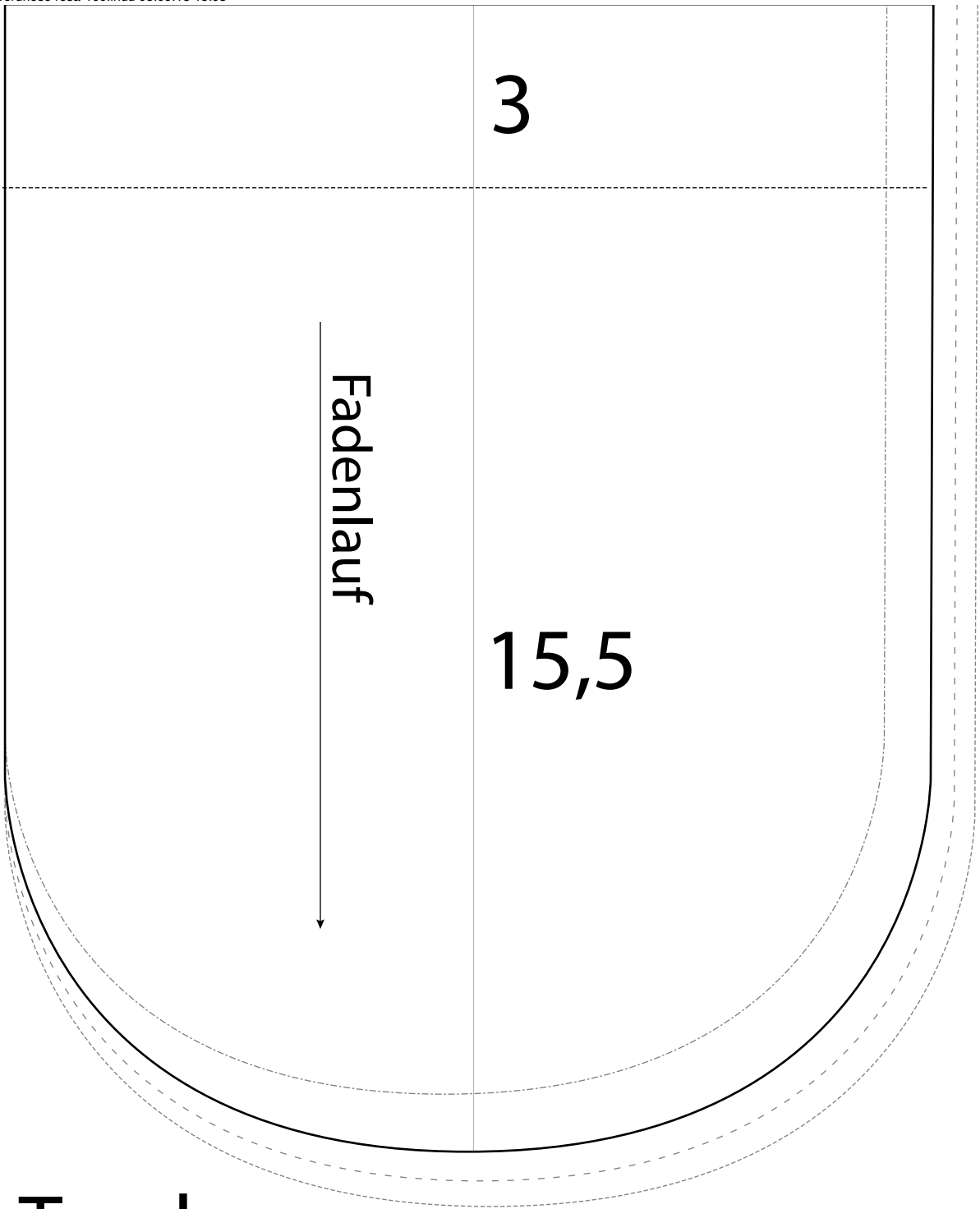


17

7

16,5





Tasche

# vorderes Hosenteil

hintere

# es Hosenteil



