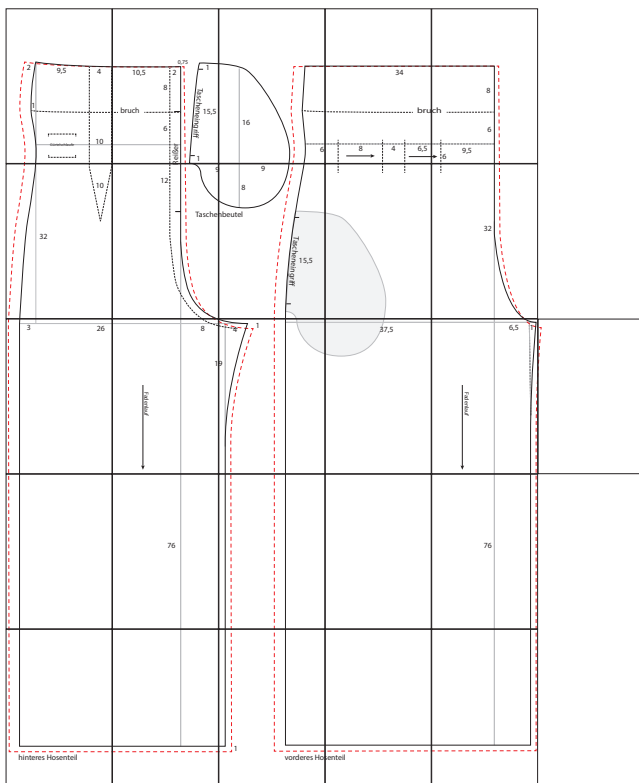
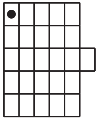


Drucken Sie die Schnittmusterseiten auf DIN A4 Papier aus. Achten Sie dabei darauf, dass das Druckergebnis in den Druckereinstellung nicht skaliert wird. Das Kontrollkästchen sollte genau 1 cm auf allen Seiten betragen.

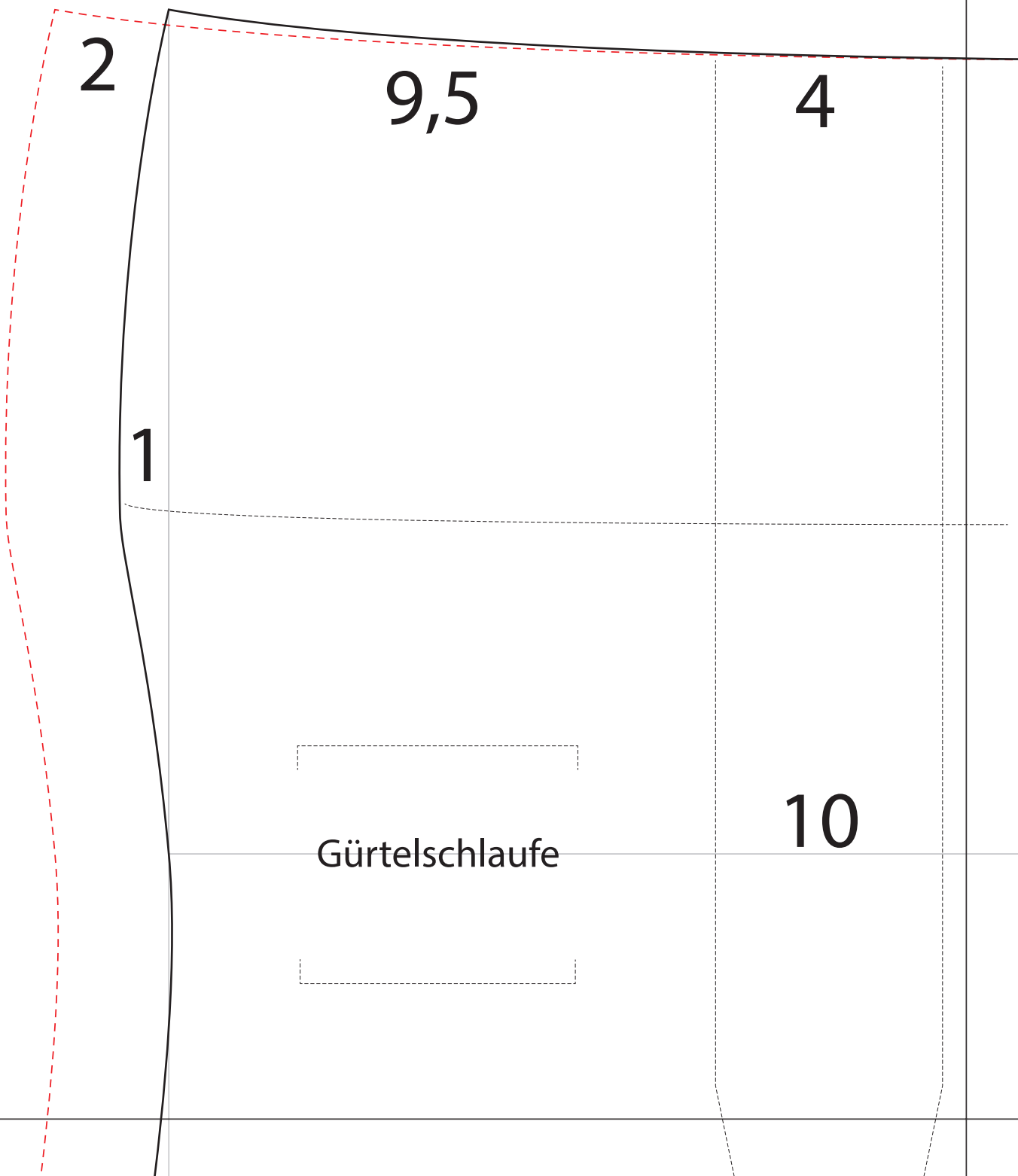
Schneiden Sie jeweils an einer langen Seite eine Schnittkante ab und kleben die Seiten gemäß untenstehender Übersicht zusammen.

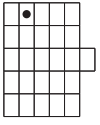




1.1

1cm





1.2

1cm

10,5

2

0,75

8

1

bruch

15,5

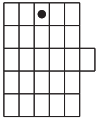
6

Tascheneingriff

Reißer

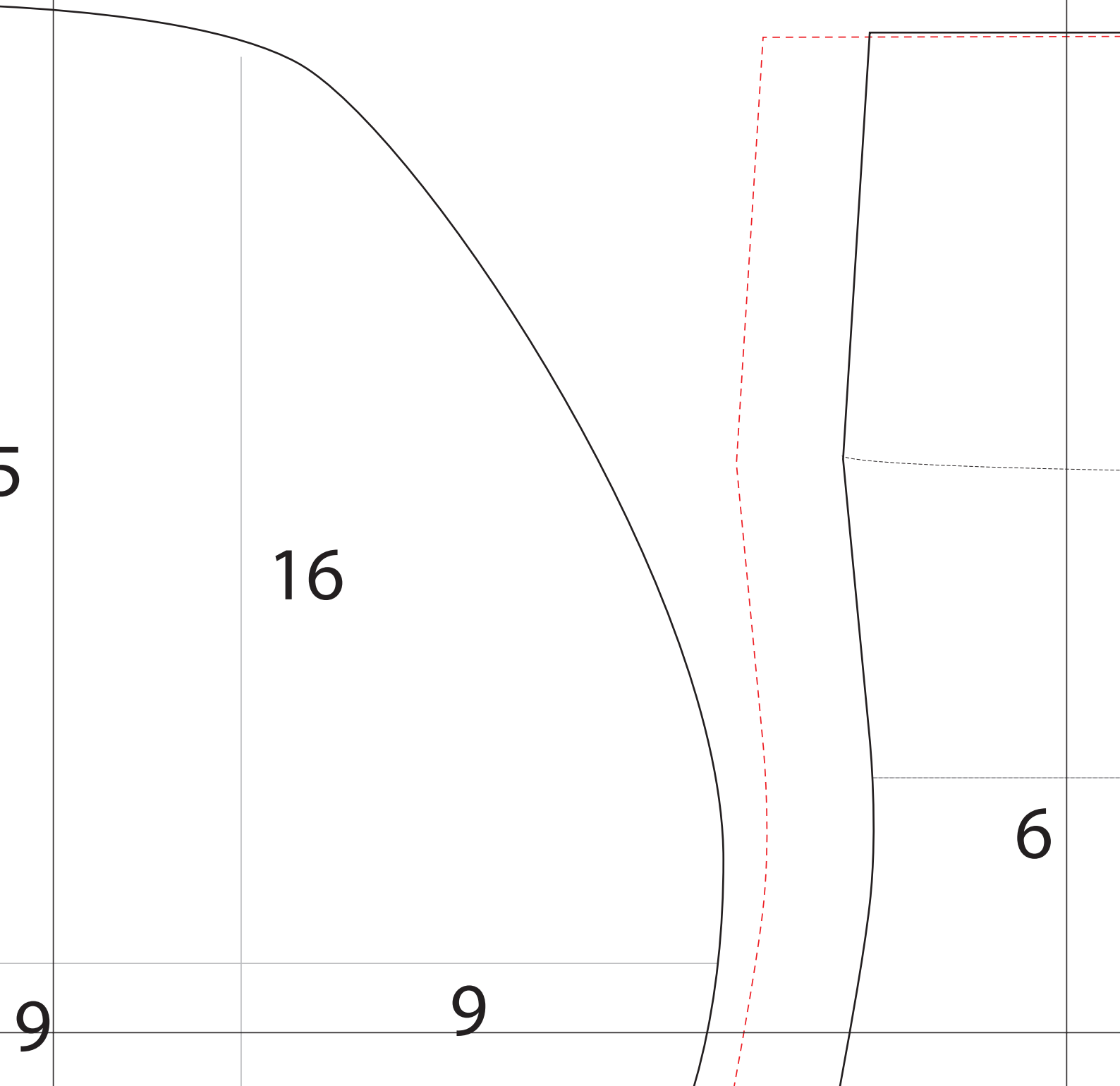
1

9



1.3

1cm



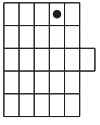
5

16

6

9

9



1.4

1cm

34

bruc

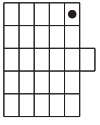
6

8

4

6,5





1.5

1cm

uch

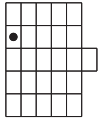
8

6

5

9,5

6



2.1

1cm

10

32

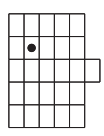
3

26

9

1cm

12



2.2

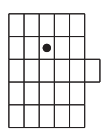
Taschenb

8



9

9



2.3

8

1cm

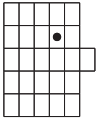
enbeutel

Tascheneingriff

15,5

4

1

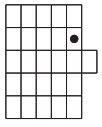


2.4

1cm



37.5



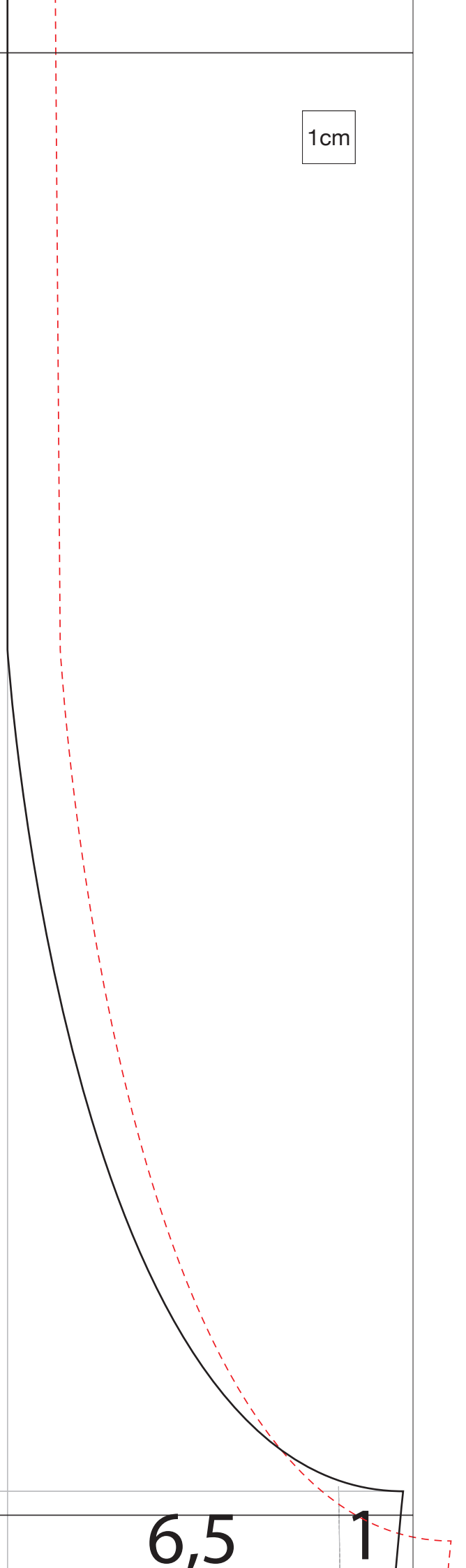
2.5

1cm

32

6,5

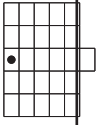
1



3

26

1cm

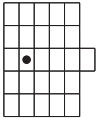


3.1

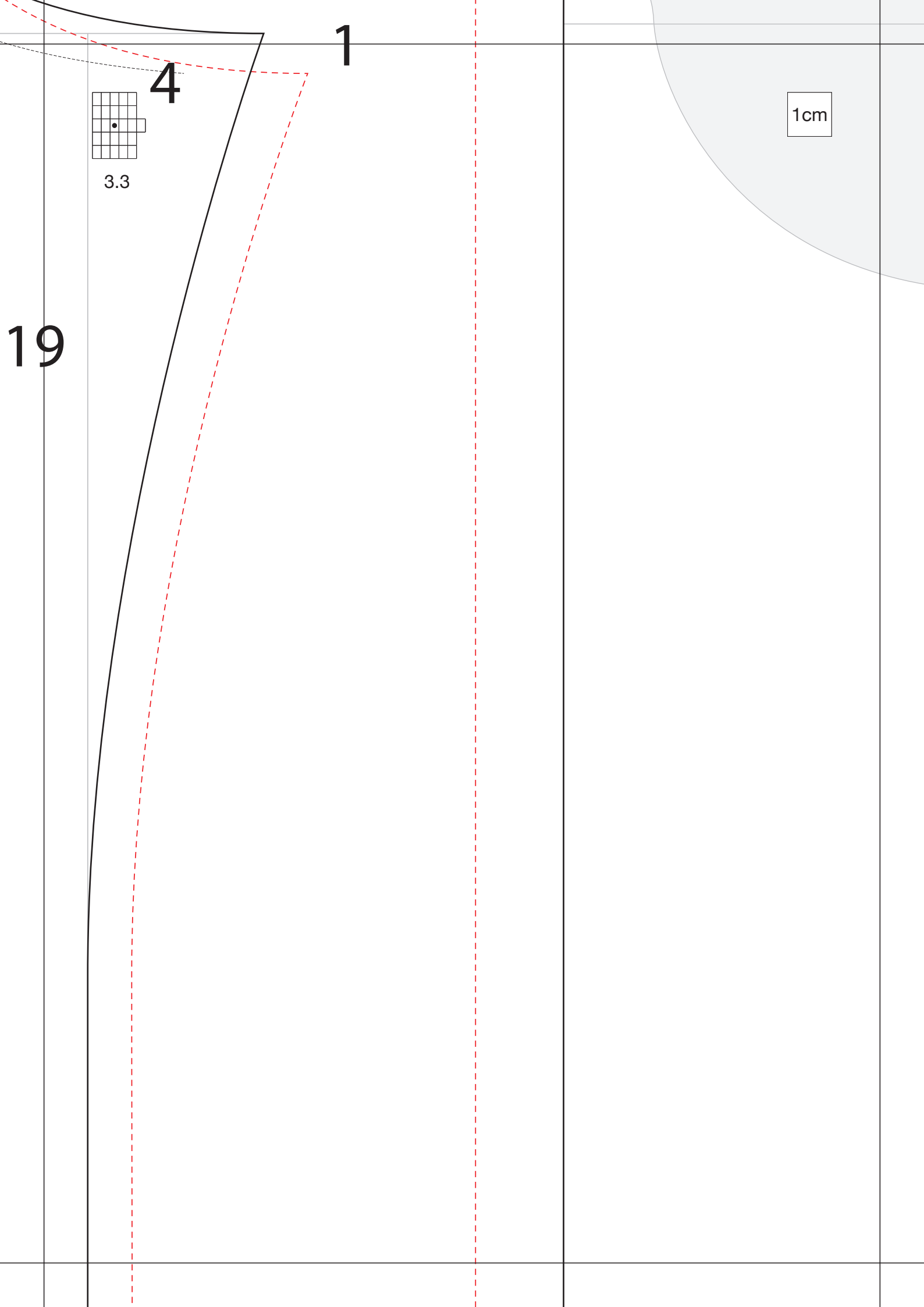




Fadenlauf

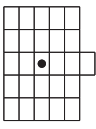


3.2



1

4

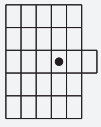


3.3

1cm

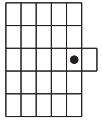
19

37,5



3.4

1cm



3.5

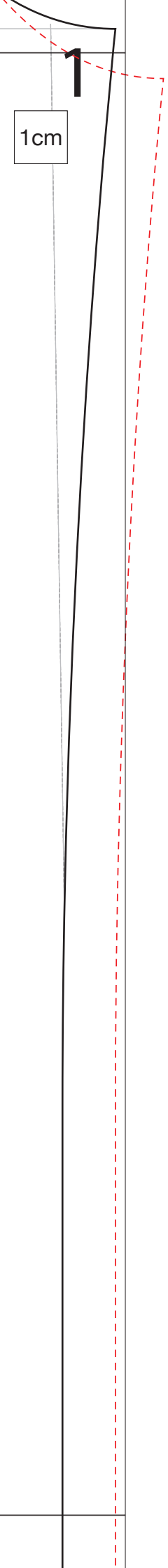
Fadenlauf



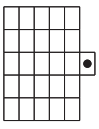
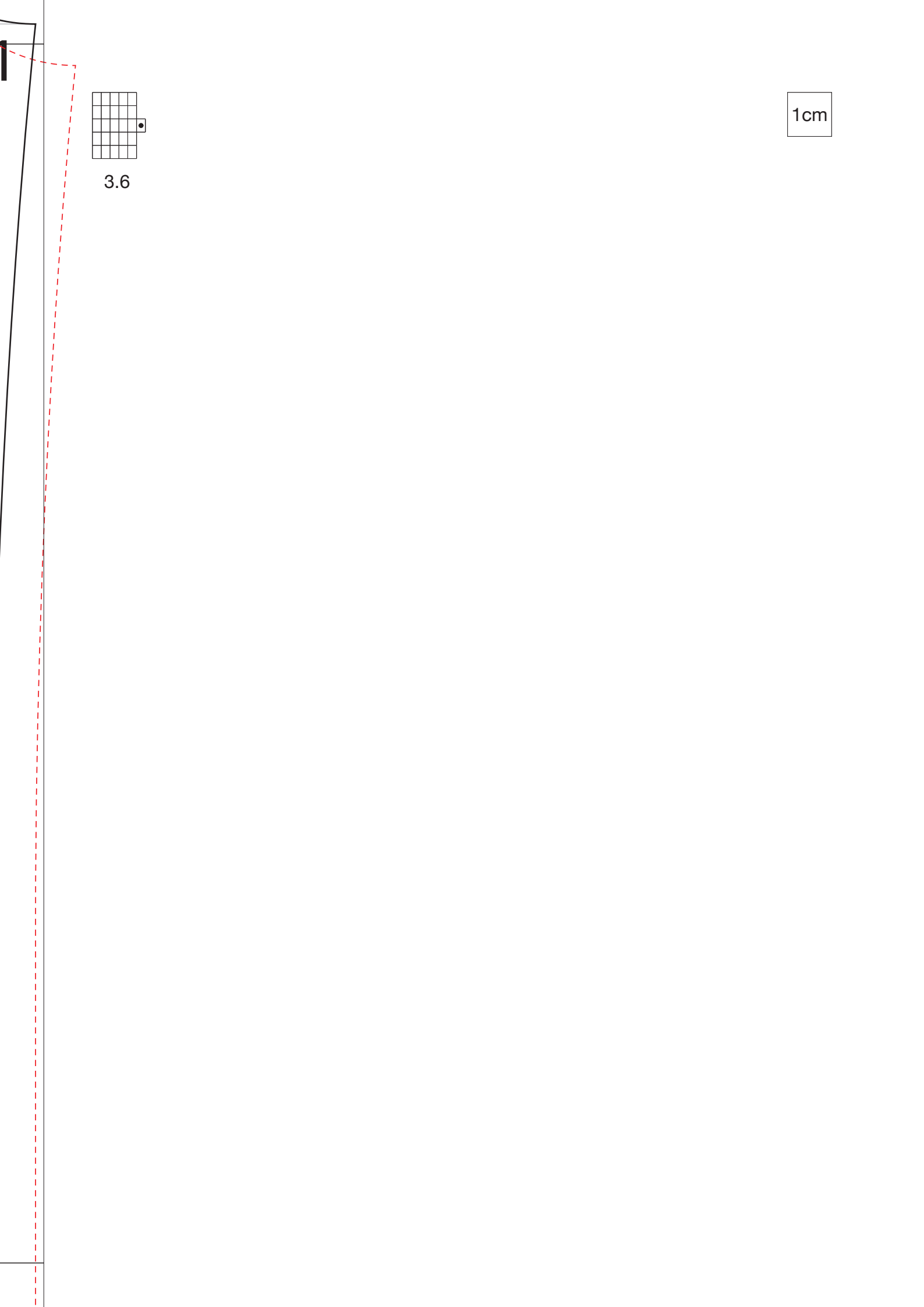
6,5

1cm

1

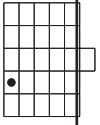






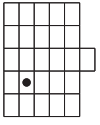
3.6

1cm



4.1

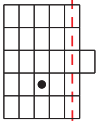
1cm



4.2

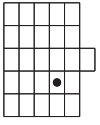
1cm

76



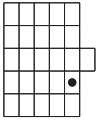
4.3

1cm



4.4

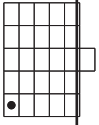
1cm



4.5

1cm

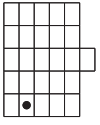
76



5.1

1cm

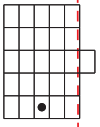
hinteres Hosenteil



5.2

1cm



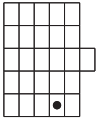


5.3

1cm

1

vorderes Hose

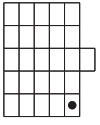


5.4

1cm

---

osenteil



5.5

1cm

