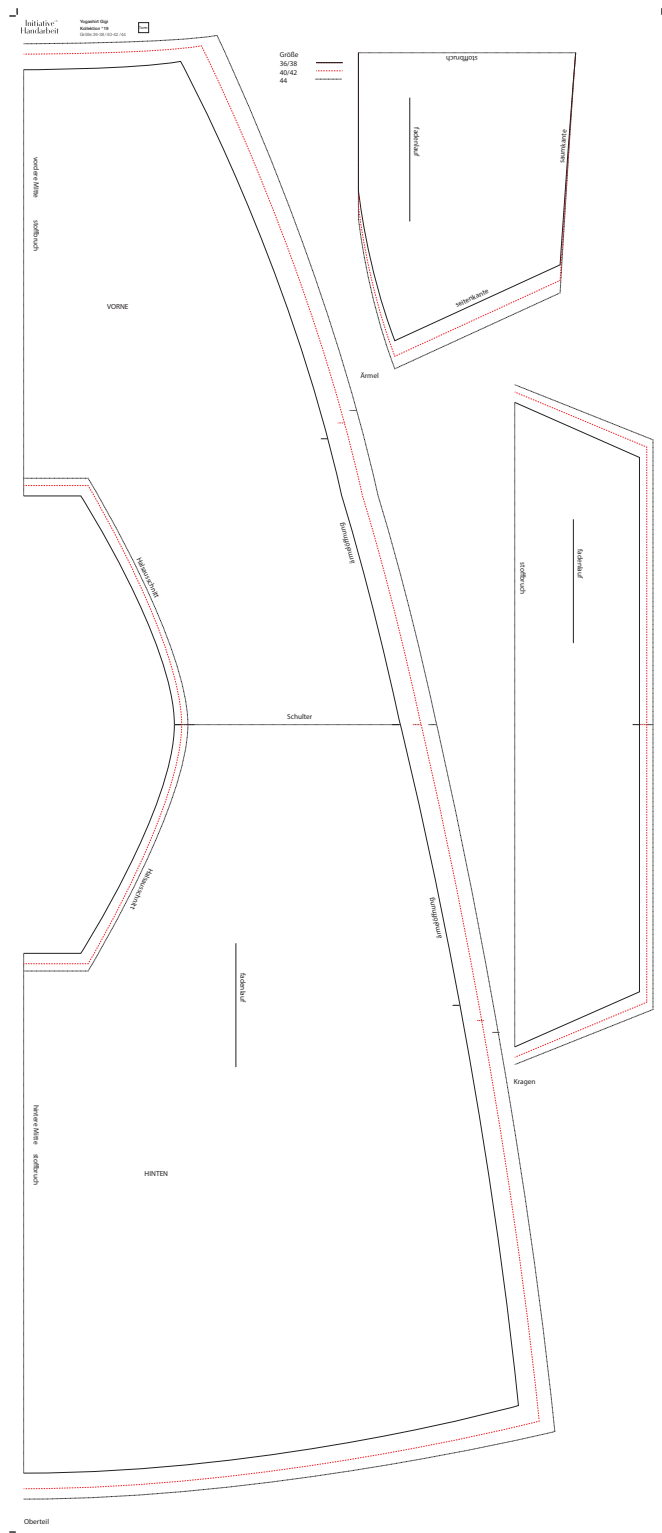


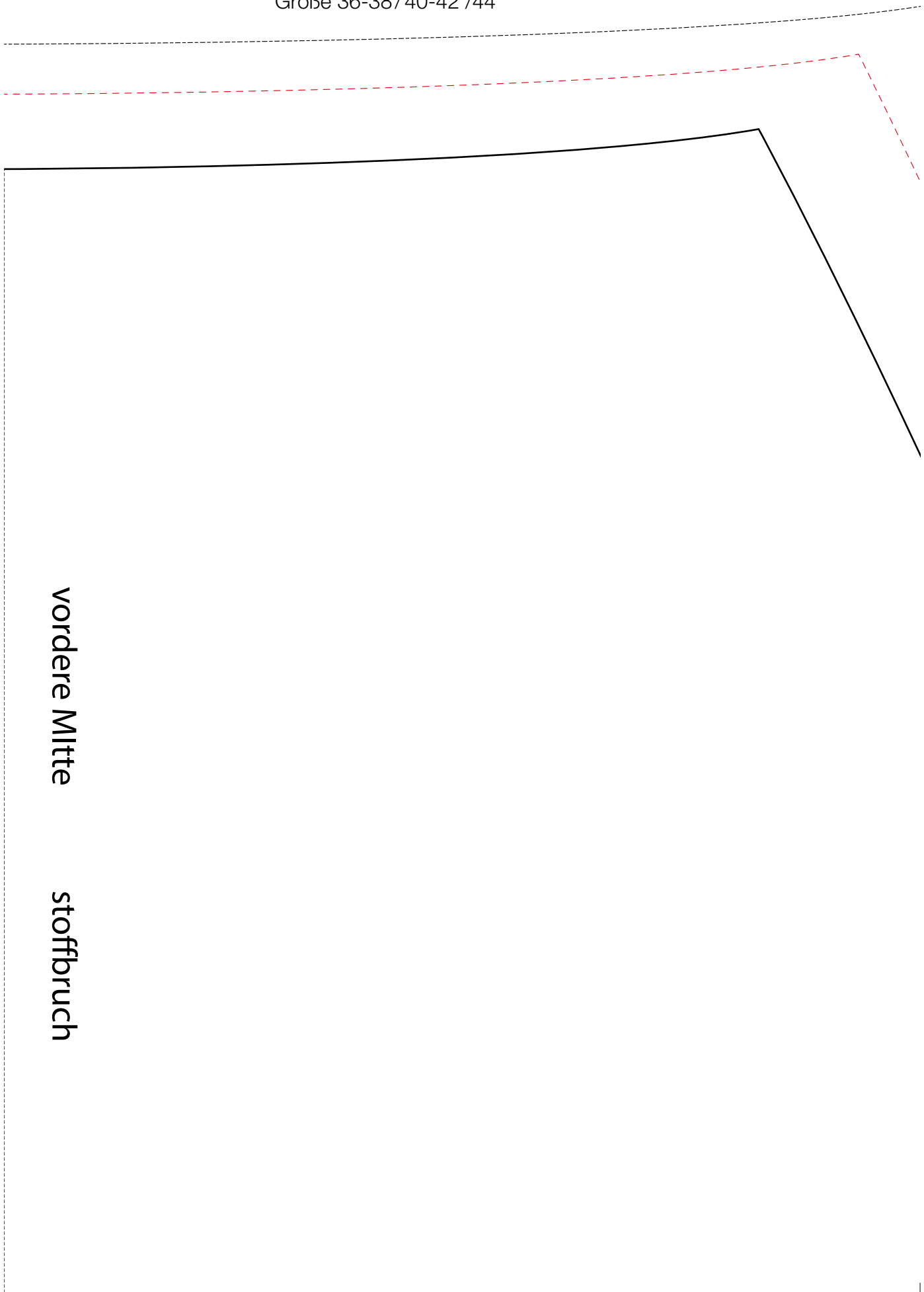
Drucken Sie die Schnittmusterseiten auf DIN A4 Papier aus. Achten Sie dabei darauf, dass das Druckergebnis in den Druckereinstellung nicht skaliert wird. Das Kontrollkästchen sollte genau 1 cm auf allen Seiten betragen.





Initiative^{e.V.}
Handarbeit

Yogashirt Gigi
Kollektion °19
Größe 36-38/40-42 /44



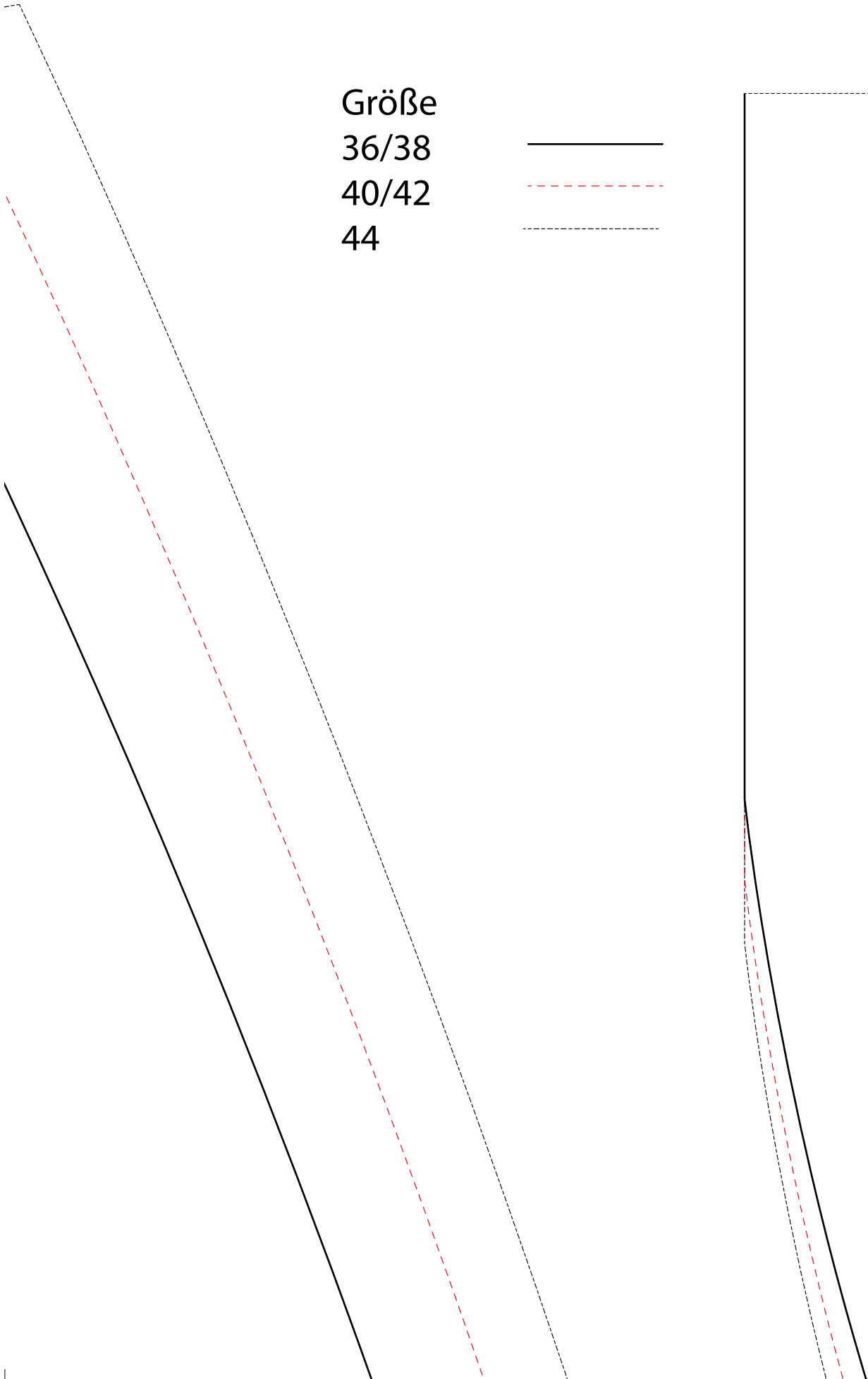
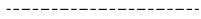
vordere Mitte

stoffbruch





Größe
36/38
40/42
44





stoffbruch

fadenlauf

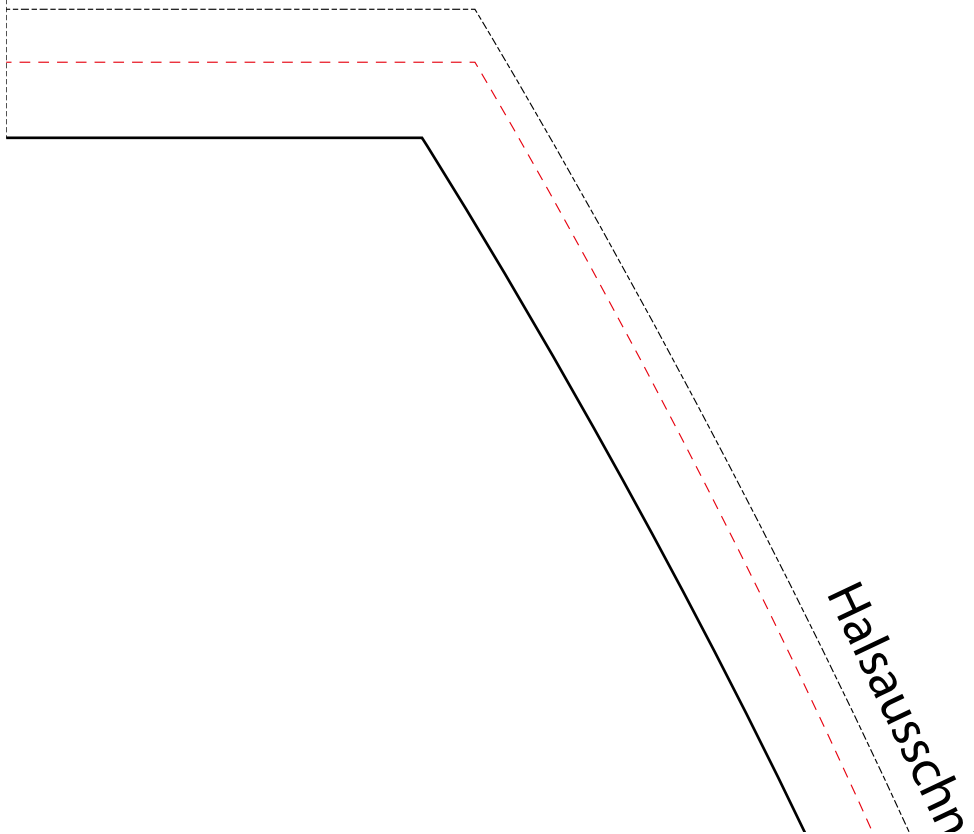
saumkante

seitenkante

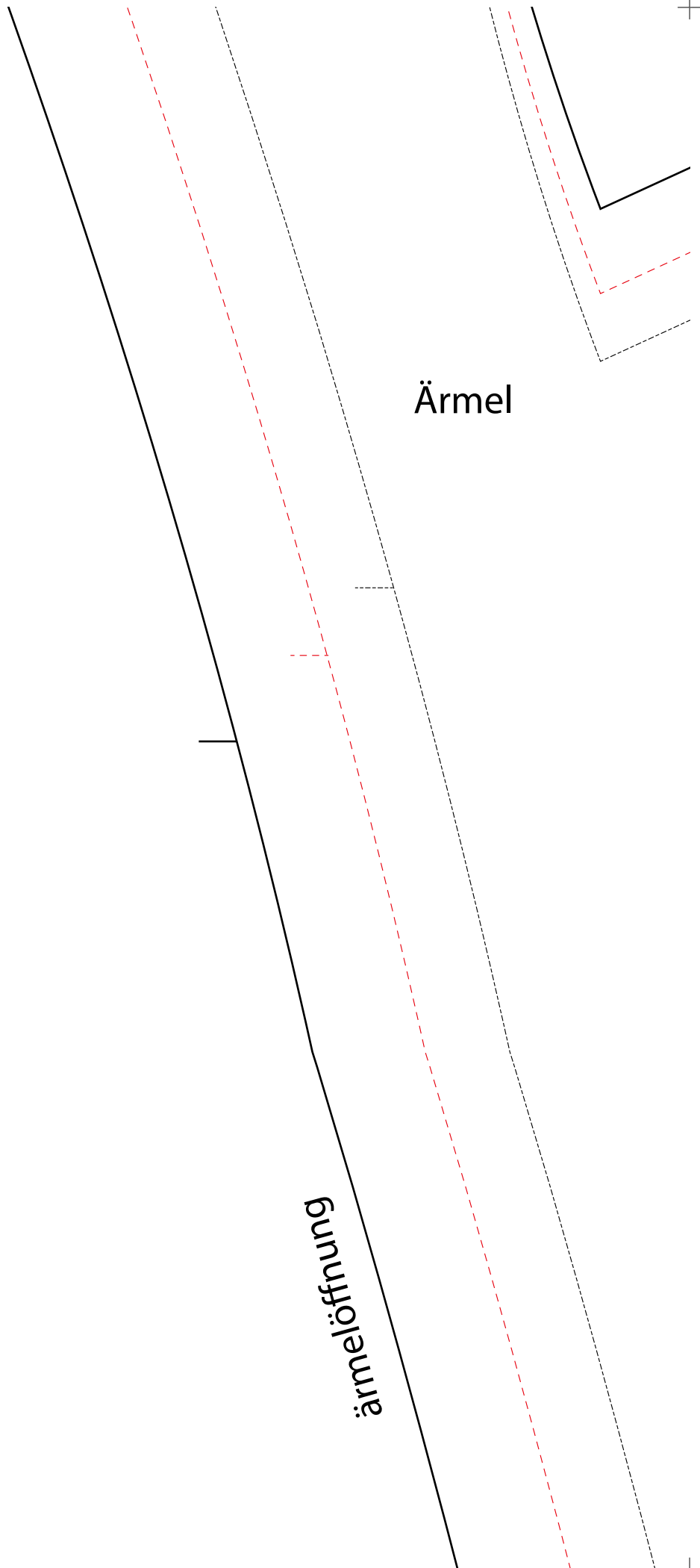




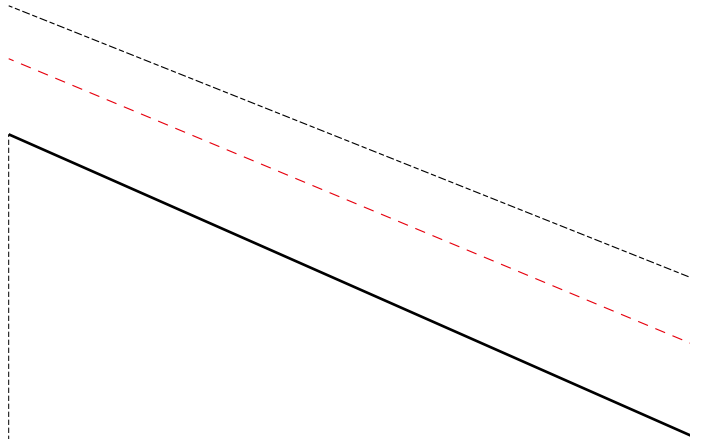
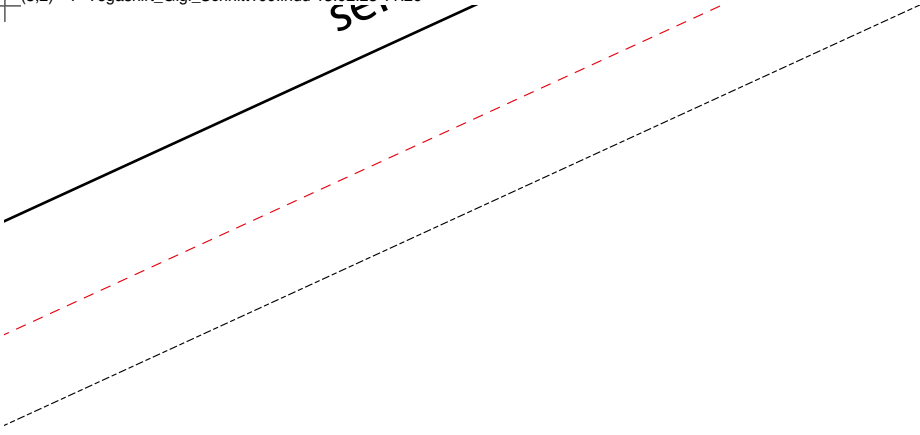
VORNE



Halsauschnitt

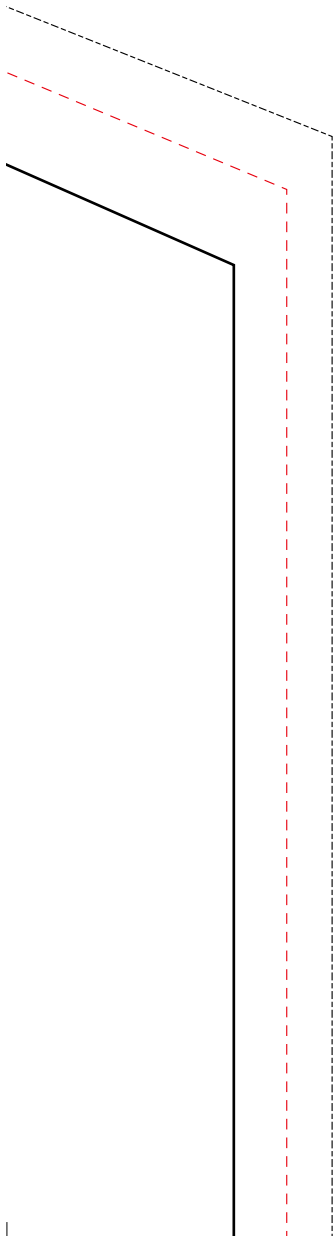


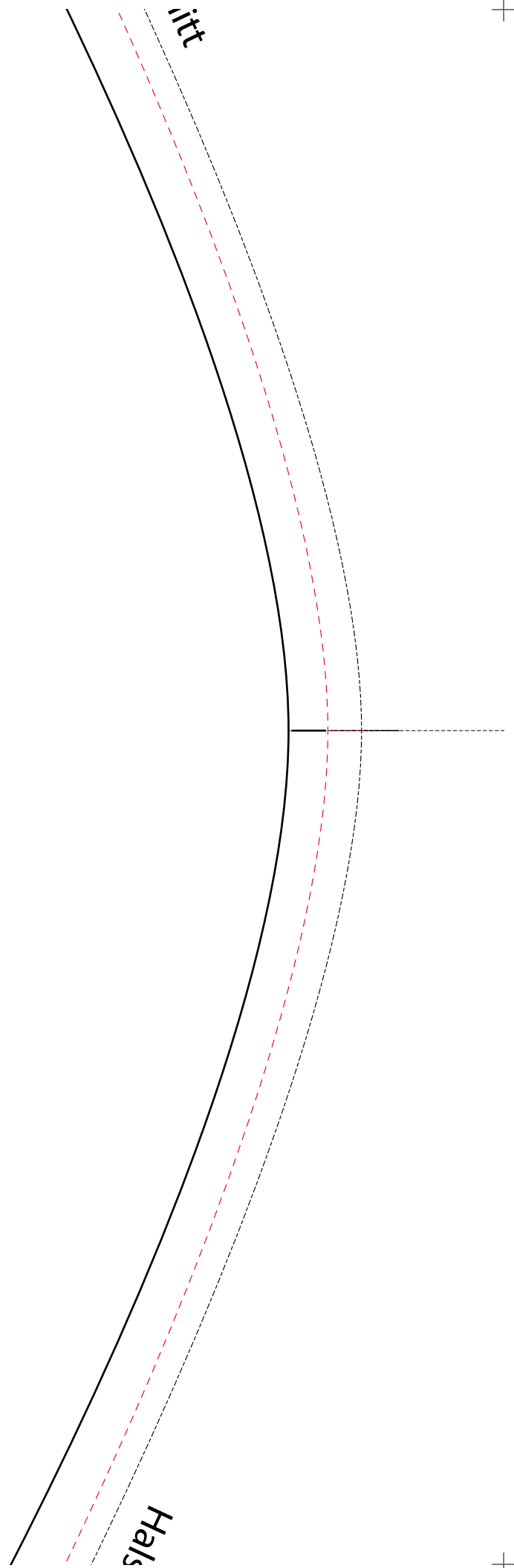
SC



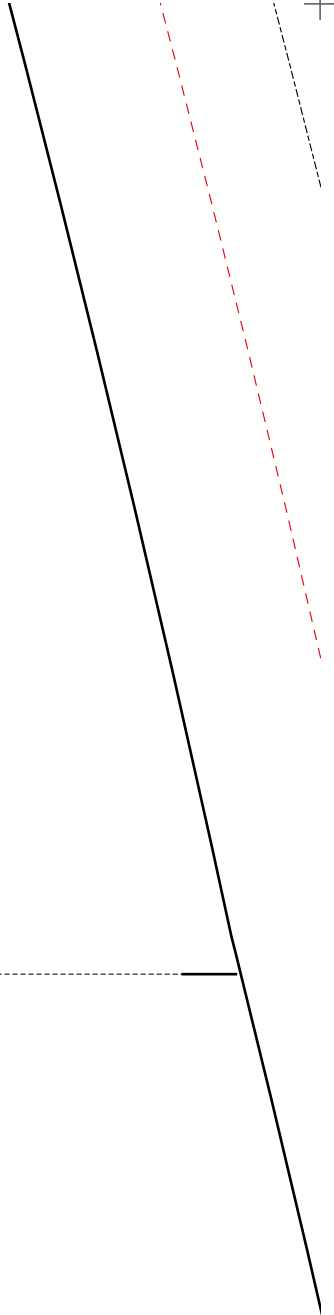
fadenlauf

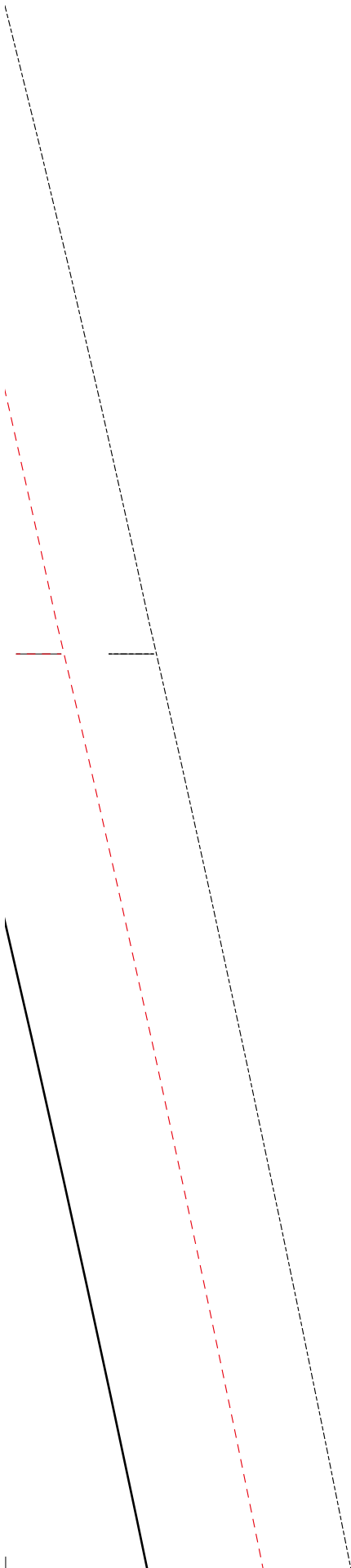
stoffbruci





Schulter

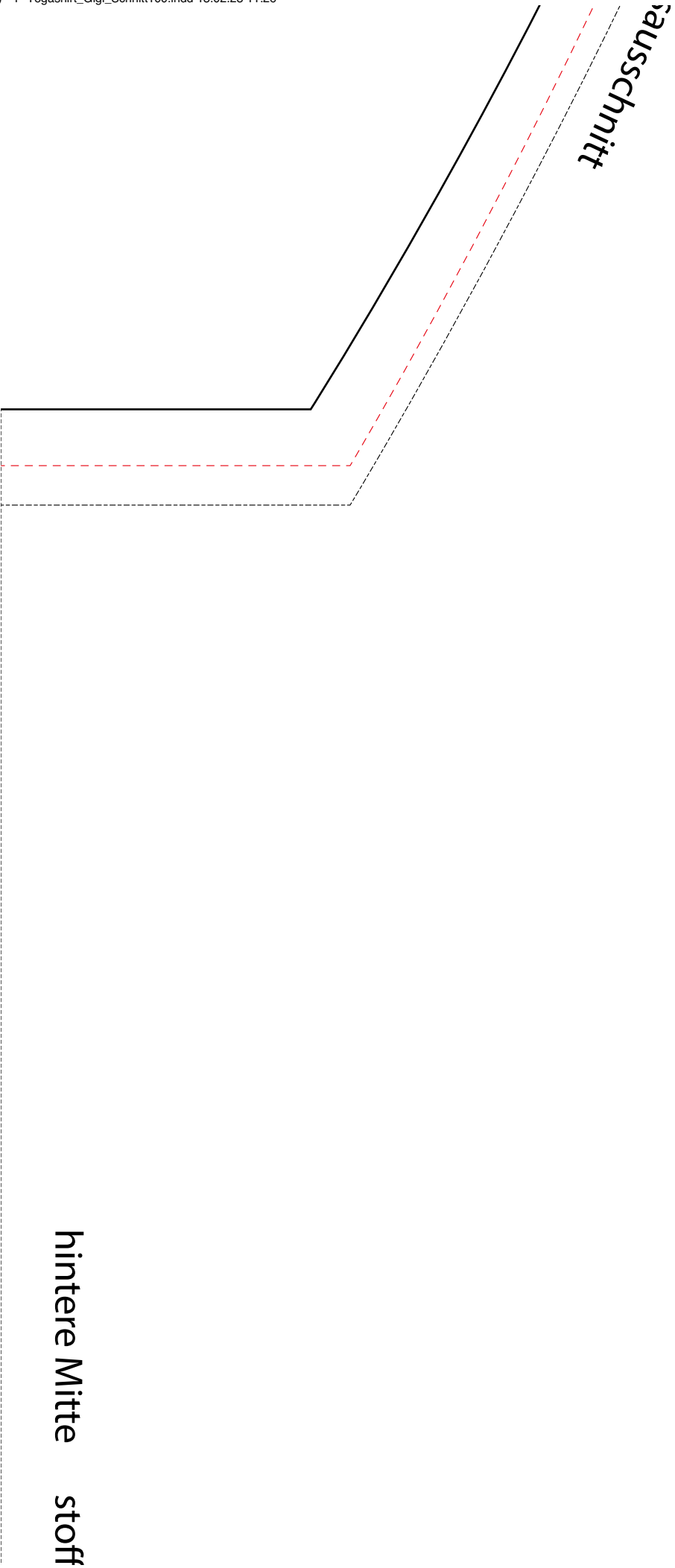




U







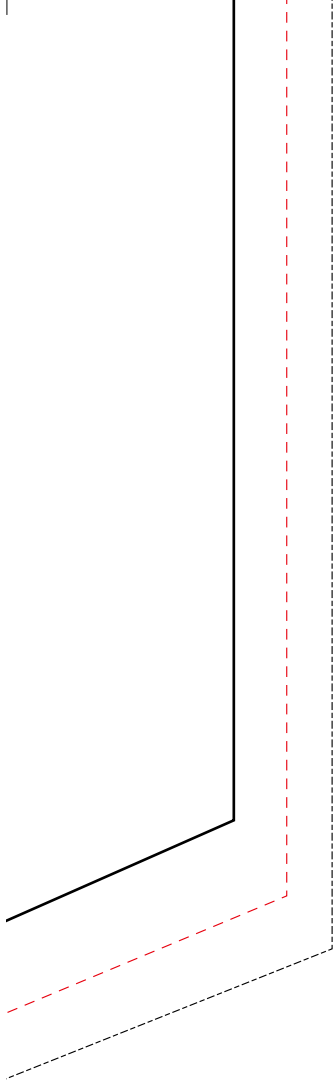
fadenlauf



ärmelöffnung

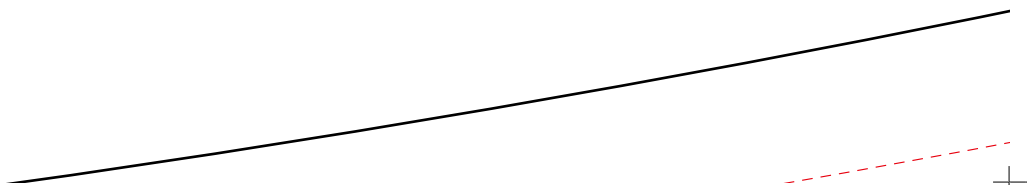
Kragen

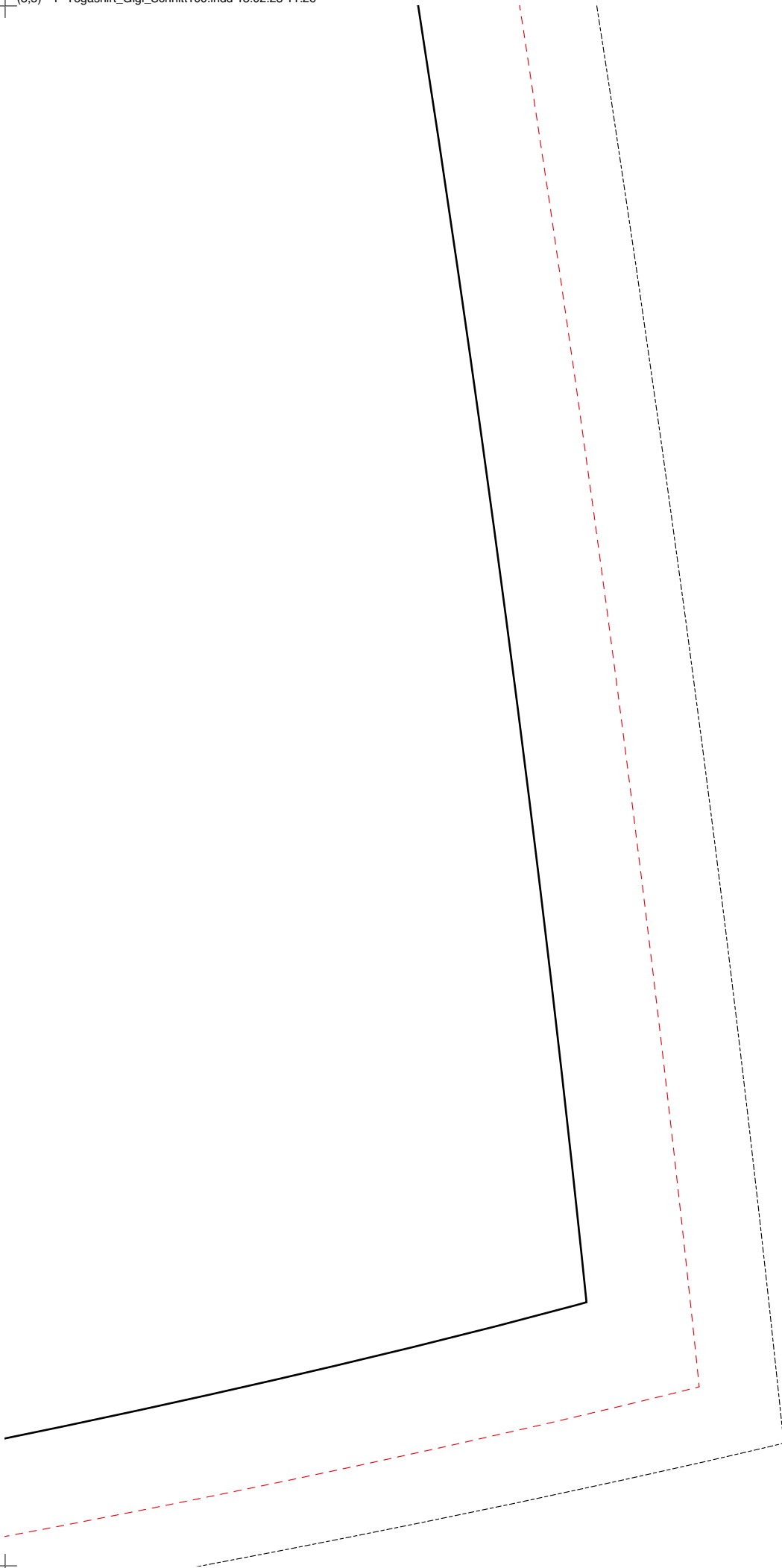




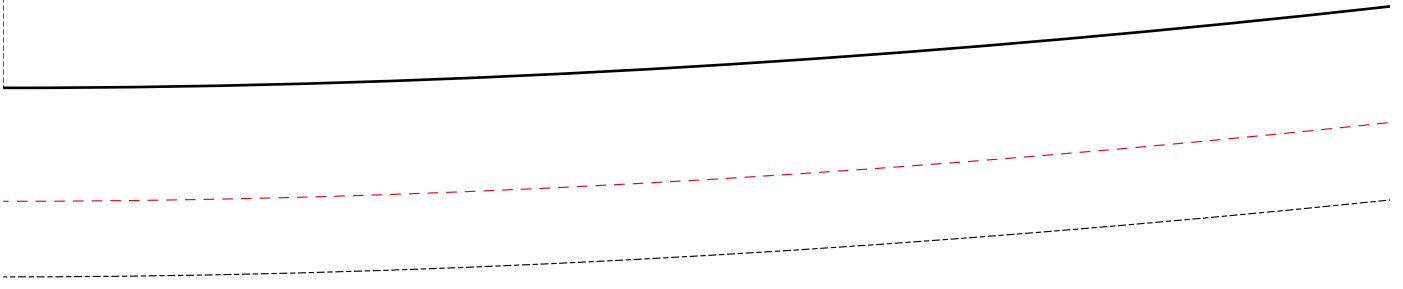
bruch

HINTEN









Oberteil



